

# Revolutionary State

Royal Palaces in Cromwell's  
England

Endhäuptung des Königs in England Anno 1649.

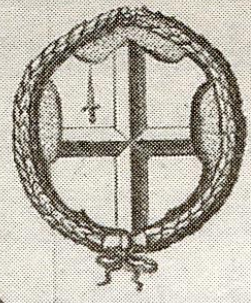
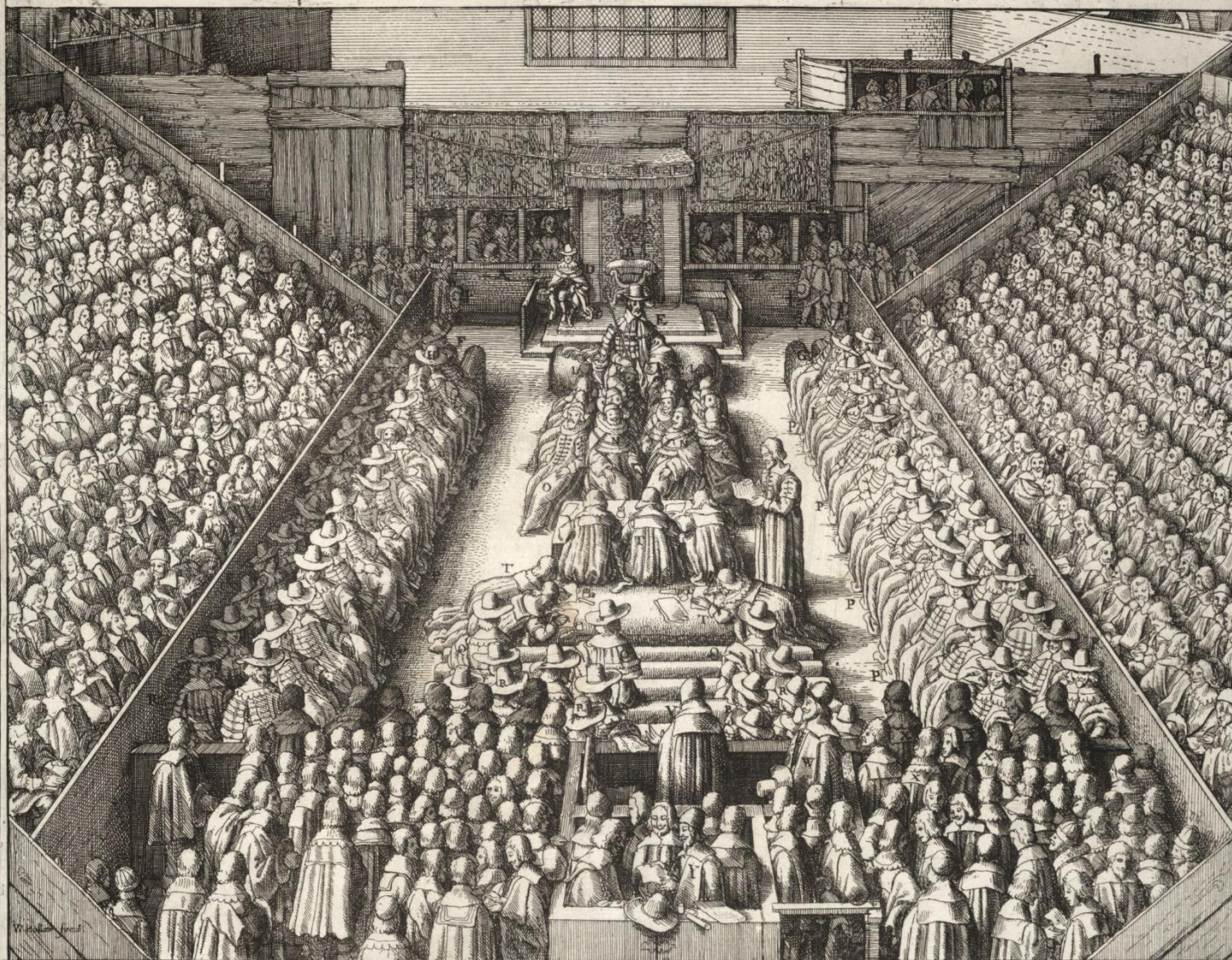


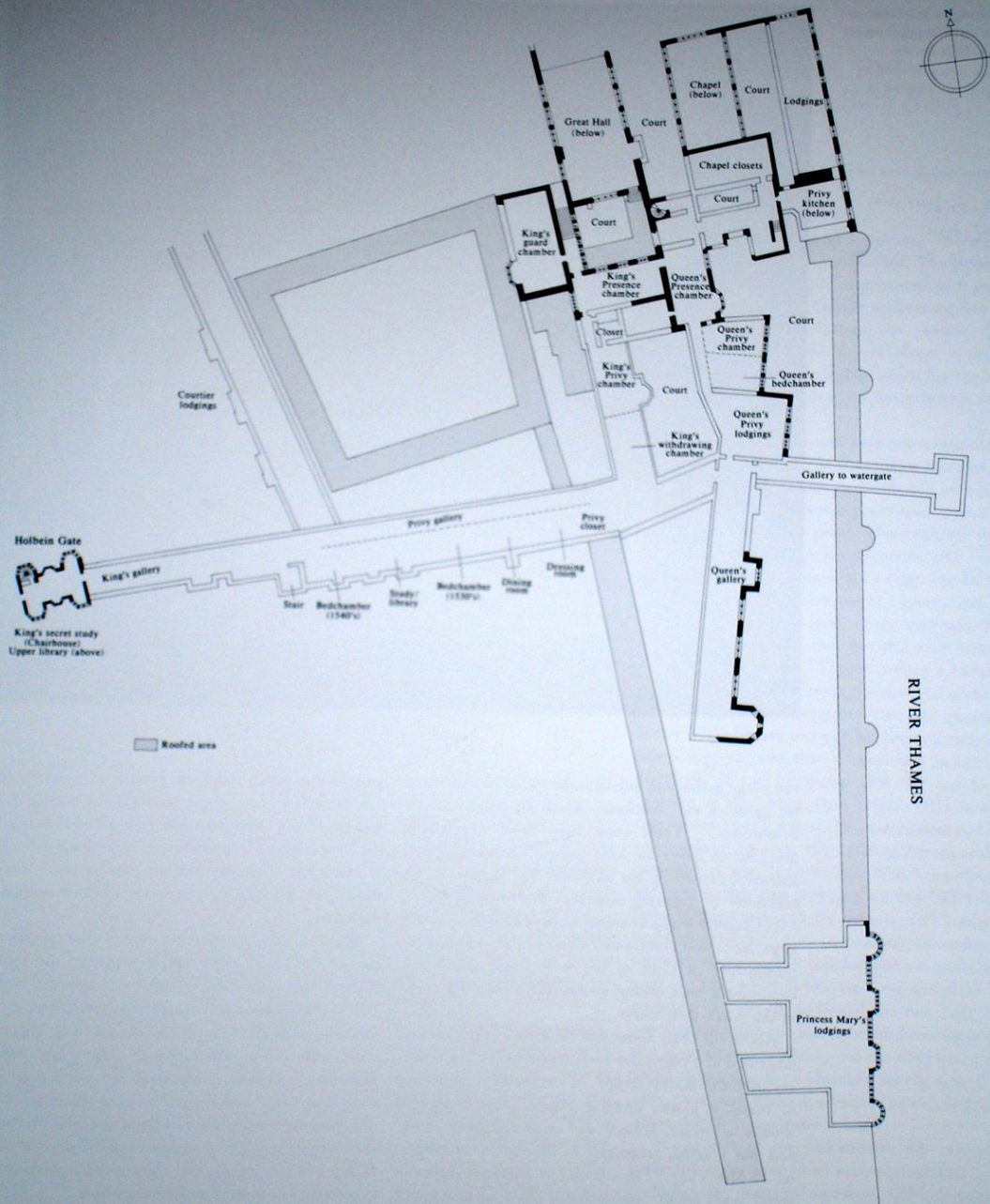
Abbildung der Session des Parlaments zu London vber den Sententz des Grafen von Stafford.



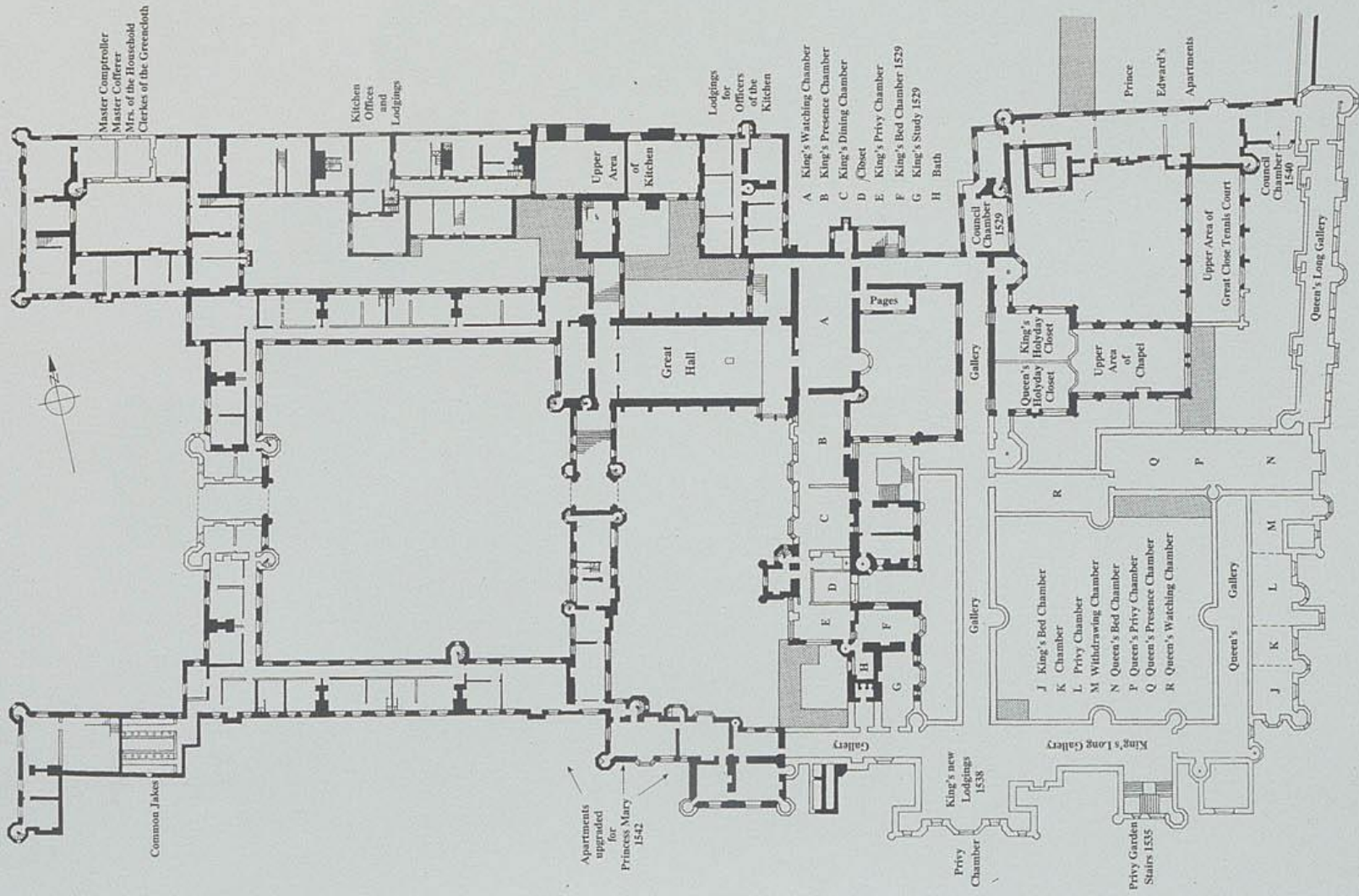
A. The Kings Mai <sup>ty</sup>	F. the Lord Keeper.	K. the Lord cheefe Iustice of	O. the M <sup>rs</sup> of the Chancery.	T. the Clarkes,
B. His seat of State.	G. the Lord Marques of Winchester	the Kings bench,	P. the Carles,	V. the Earle of Stafford.
C. the Queenes Mai <sup>ty</sup>	H. the Lord high Chamberlaine	L. 2 Pryui Counsellors,	Q. the Vicecounts,	W. the Lieute nant of the Tower.
D. the Prince his highnes.	of England.	M. the M <sup>rs</sup> of the rolls.	R. the Barons.	X. the Plaintiues.
E. Thomas Earle of Arundell,	I. the Lord Chamberlaine, of	N. the Iudges and Barons of the	S. the Knights, Cittizens, & bur-	Y. the Deputis counsell & Officers
Lord high Steward of England	his Mai <sup>ty</sup> household,	Exchequer.	geses of the howte of Commons,	Z. the Countes of Arundell.
		† the eldest Sonnes of some of the Nobility.		







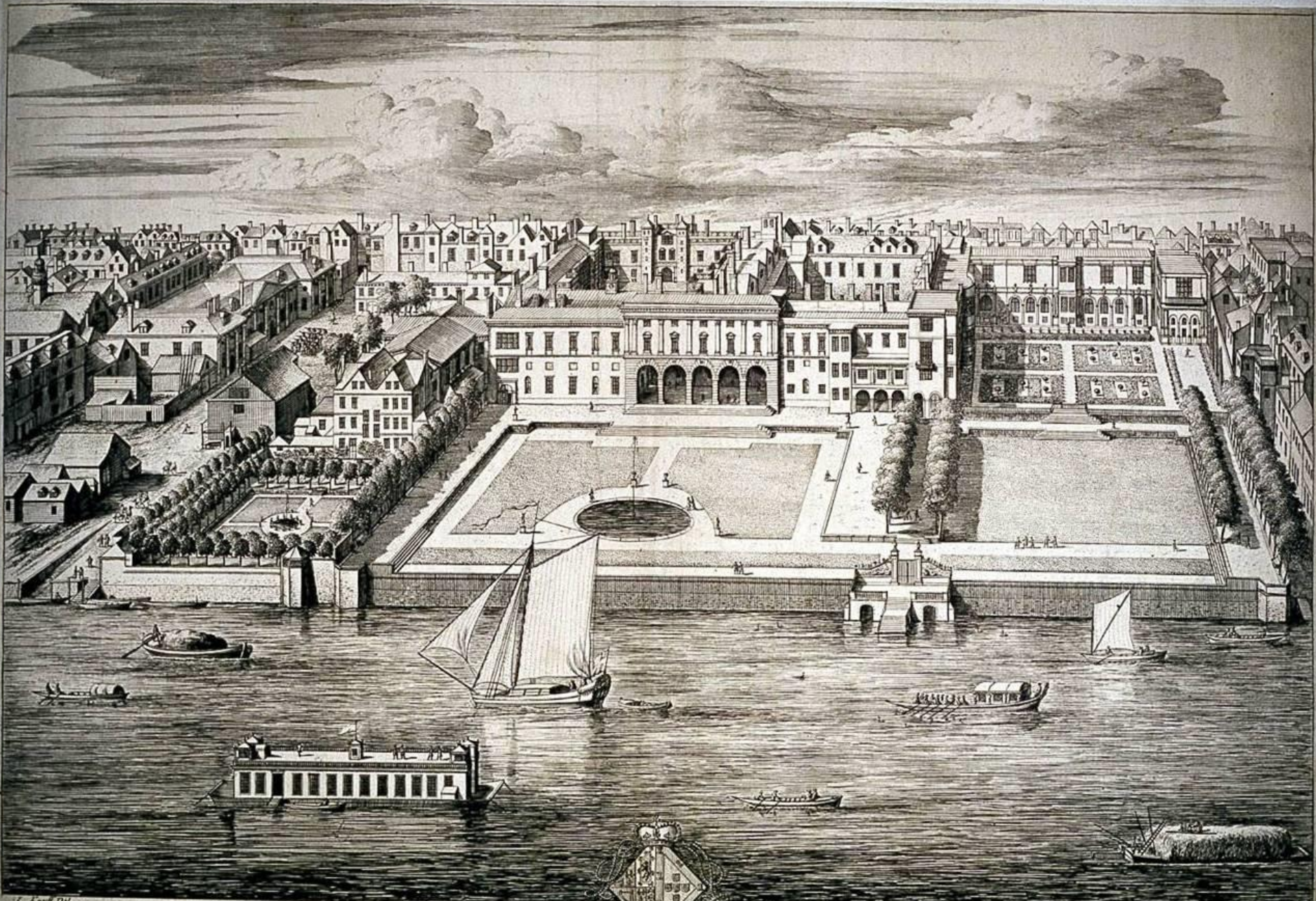




Confirmed feature in-situ or in excavation.  
Inferred from documentary evidence.  
Conjectural.

**FIRST FLOOR. c.1547**





L. Kneller Del.

Somerset



House

J. Kneller Sculp.

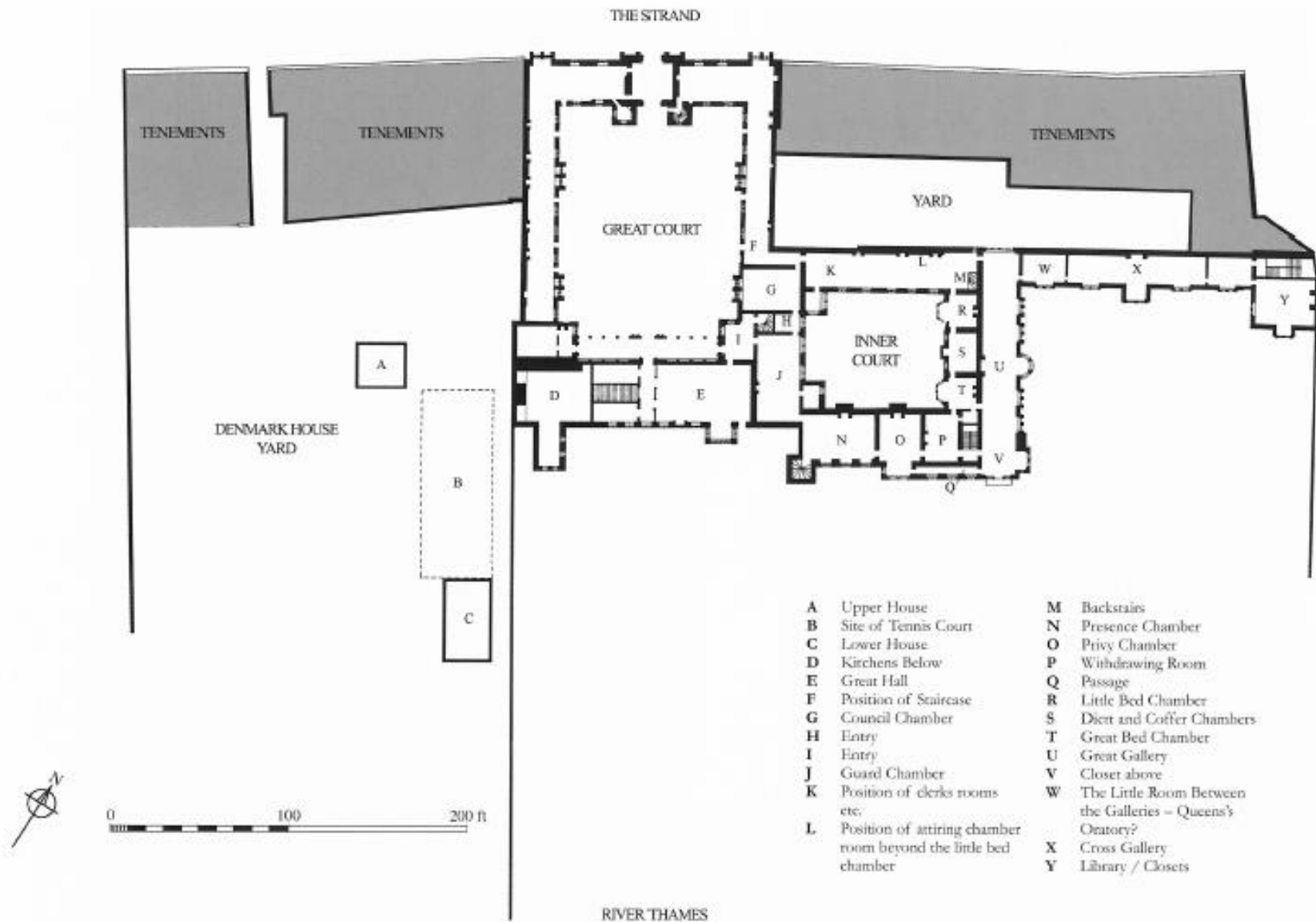
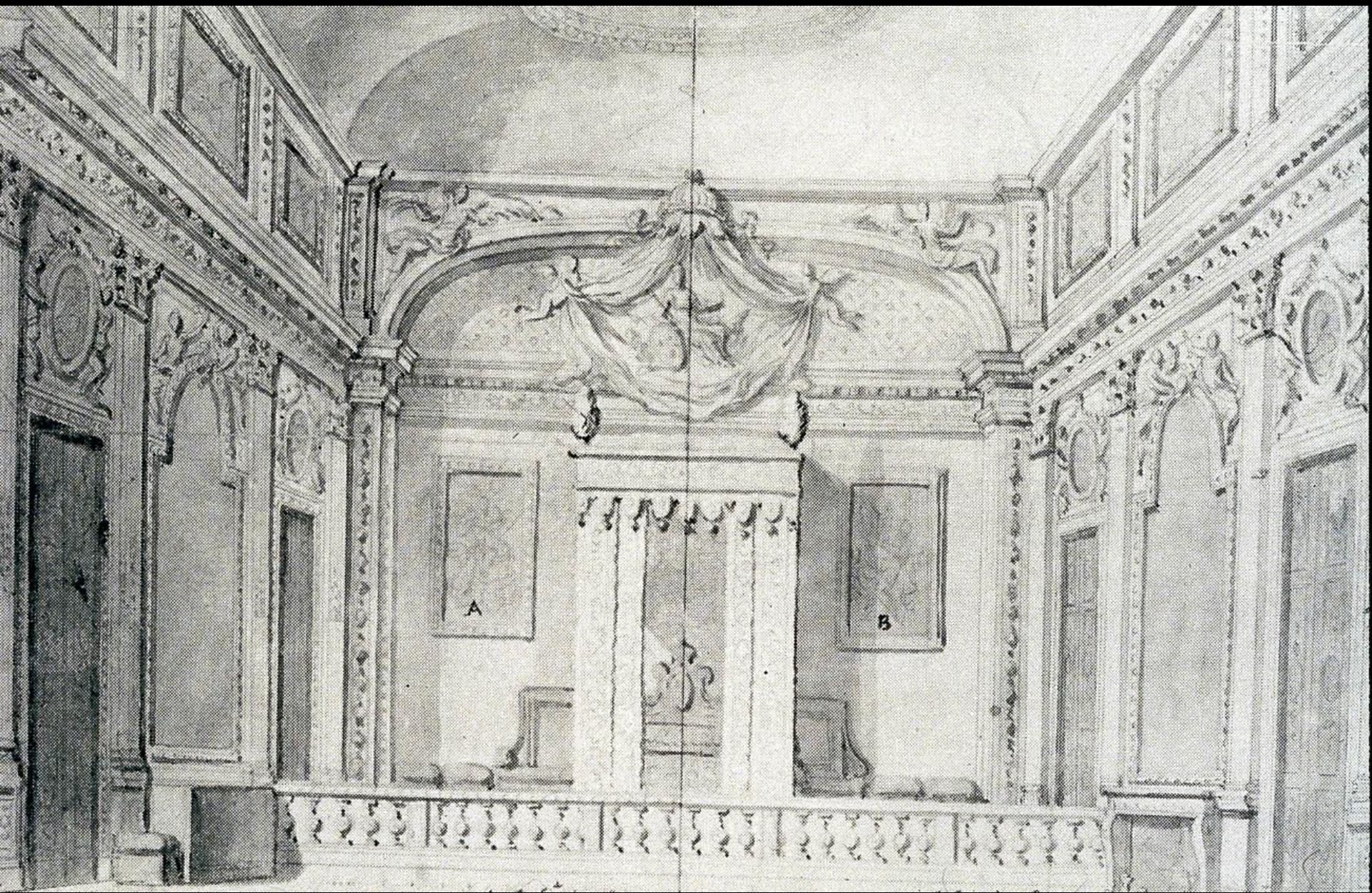
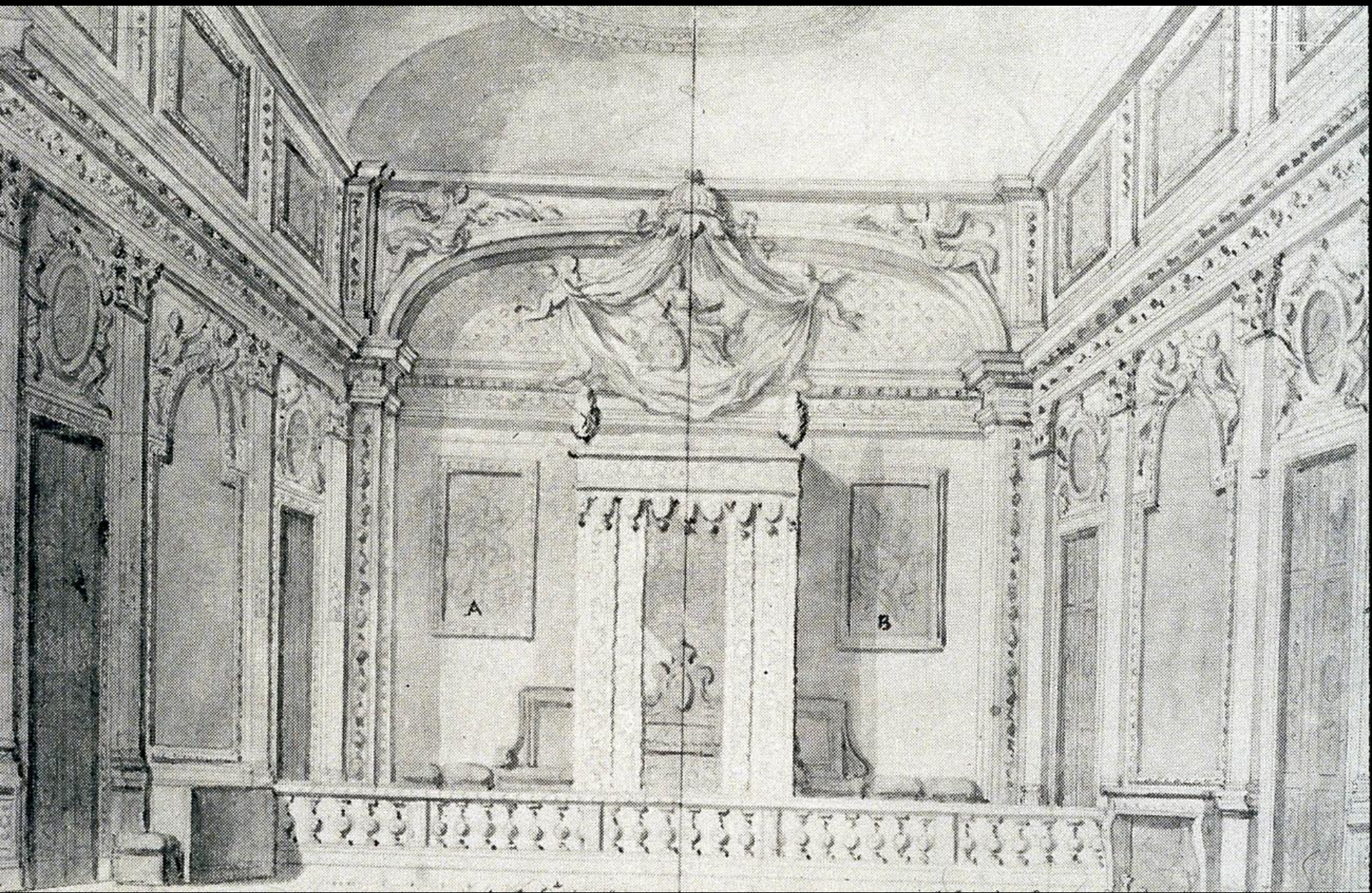


Fig. 7. Plan of the ground floor of Somerset House in c. 1620.  
(Simon Thurley; drawing Melissa Beasley)







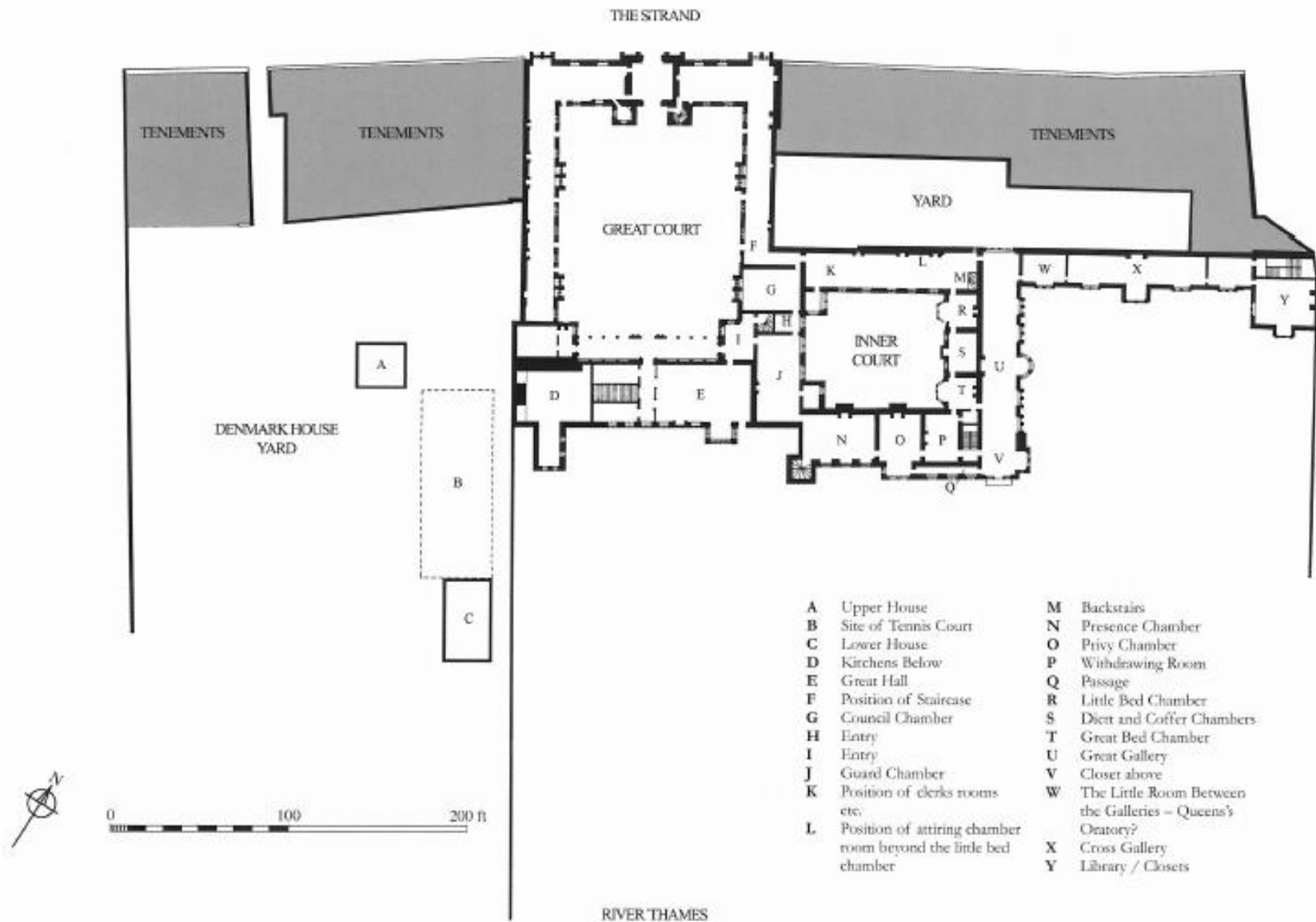
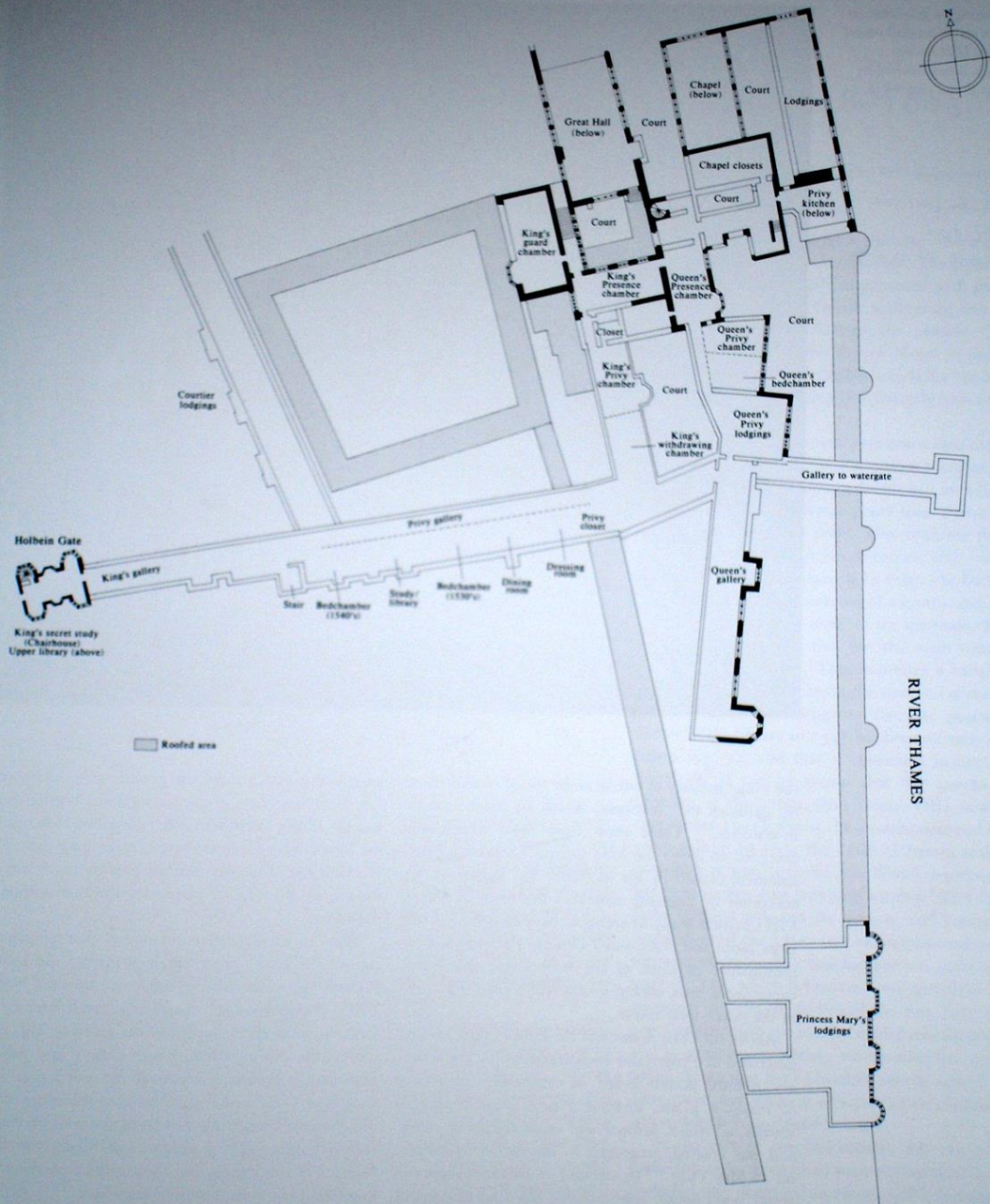
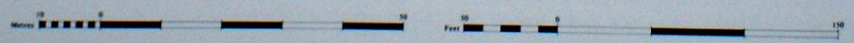


Fig. 7. Plan of the ground floor of Somerset House in c. 1620.  
(Simon Thurley; drawing Melissa Beasley)



Holbein Gate  
 King's gallery  
 King's secret study  
 (Chairhouse)  
 Upper library (above)

Roofed area



RIVER THAMES





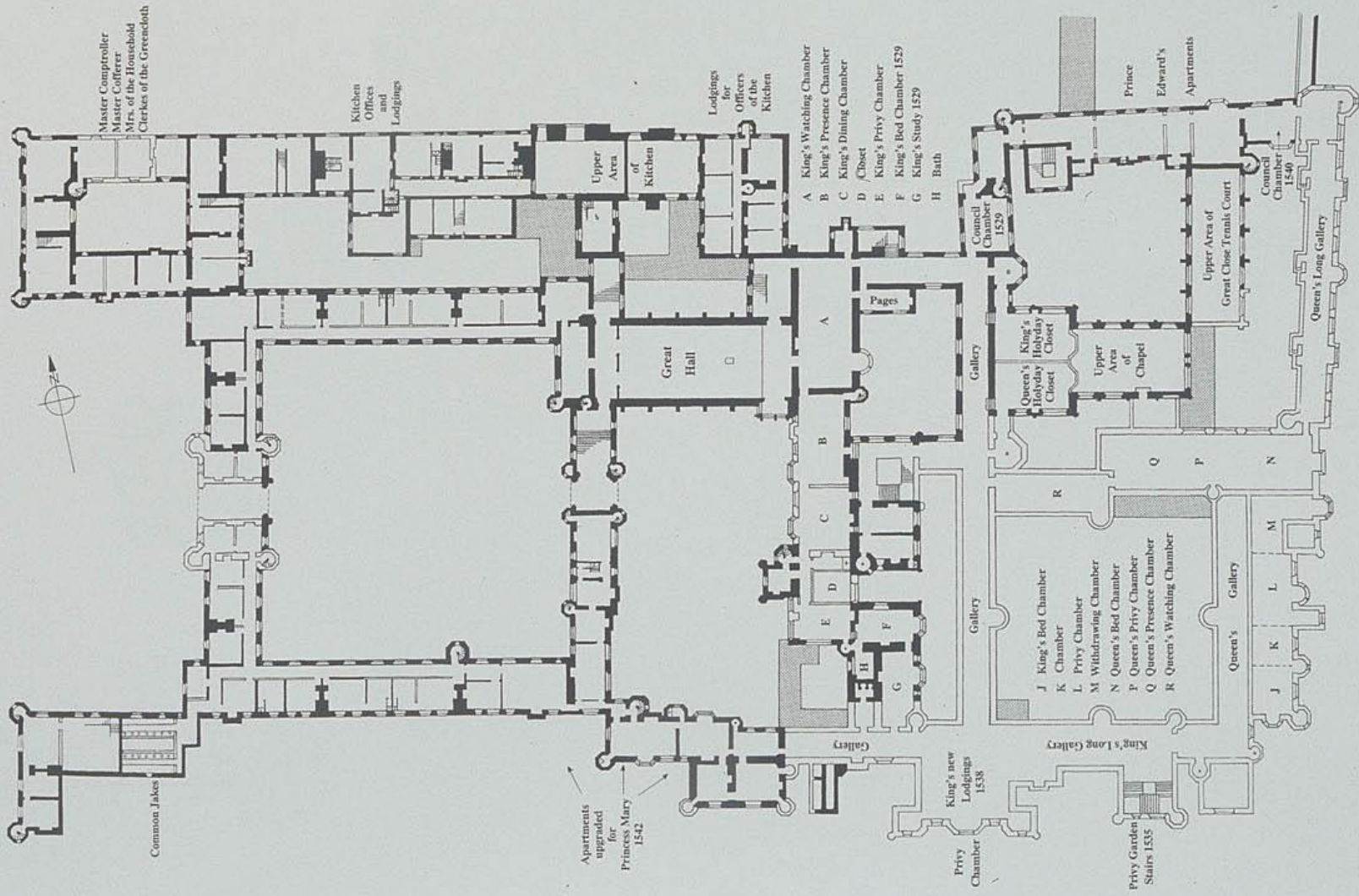


N. Ponce van der ...  
N. Ponce van der ...

Henrietta Maria, Queen of England,  
about 1633.





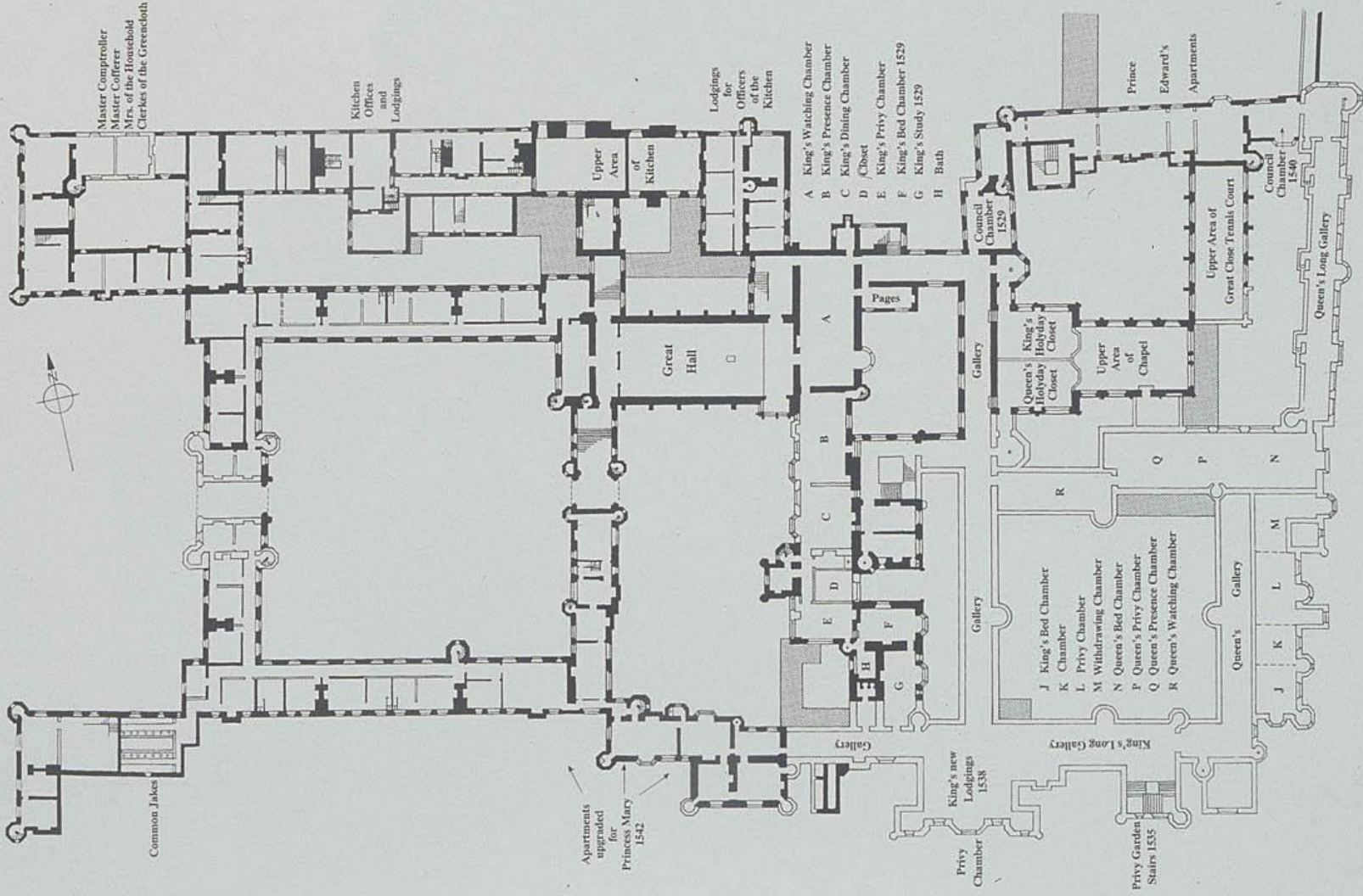


**FIRST FLOOR. c.1547**

78 Reconstructed first-floor plan of Hampton Court in c.1547. Drawing Daphne Ford.







### FIRST FLOOR. c.1547

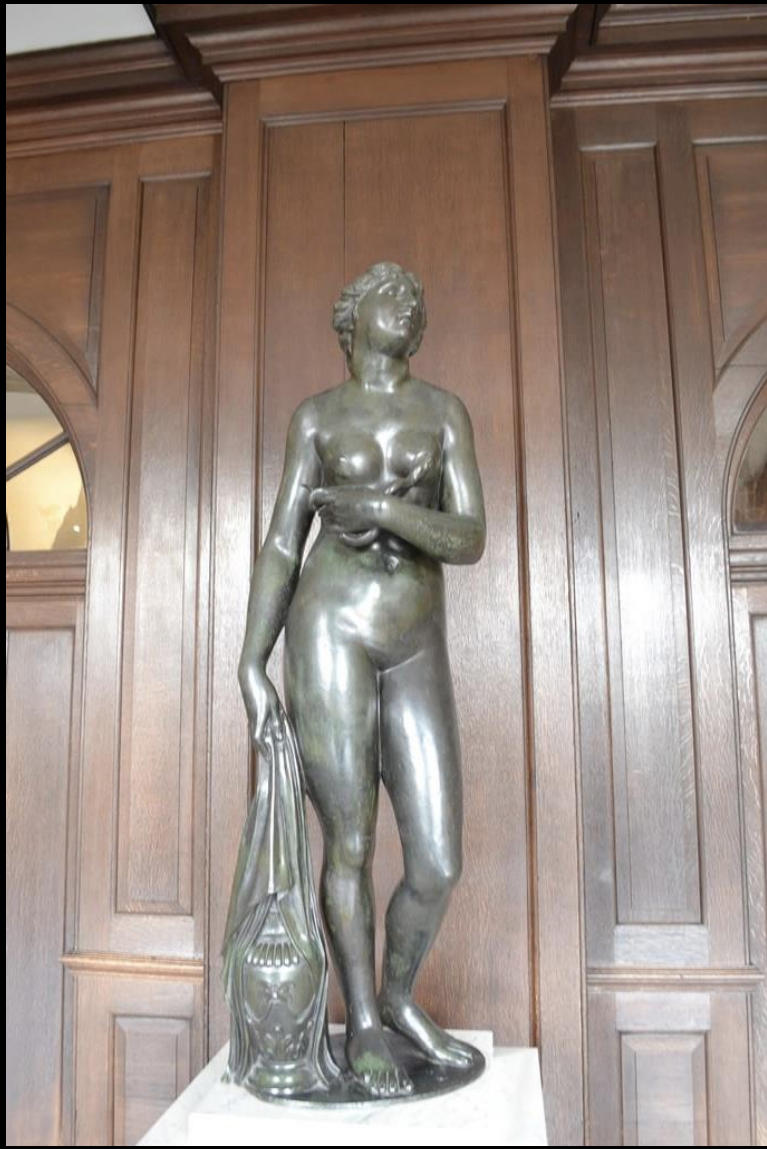


*The manner of his Highness Lying in State at Somerset house*



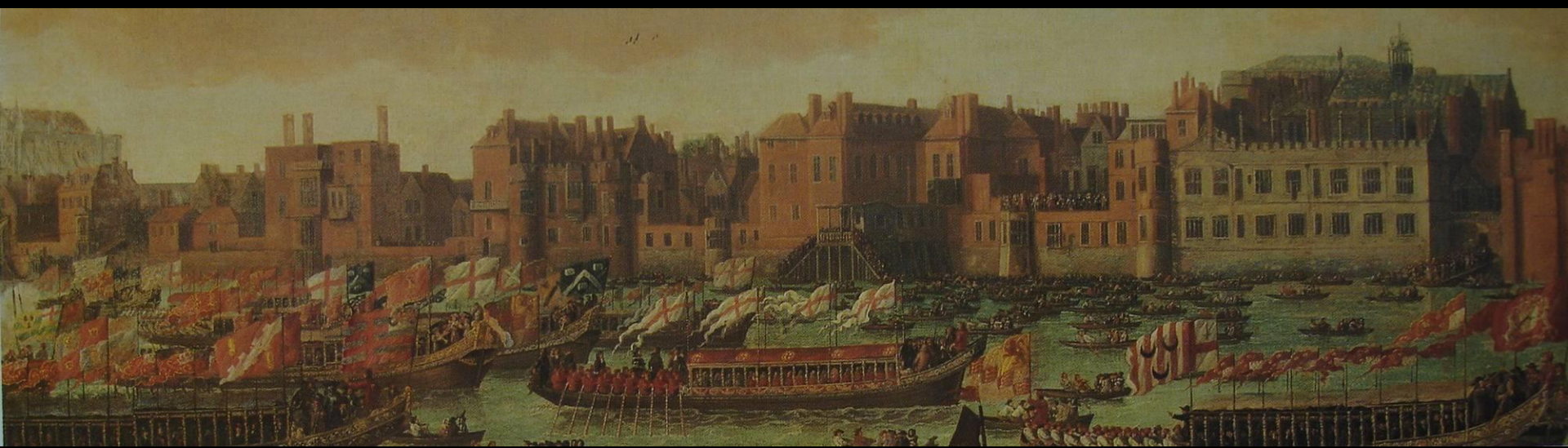


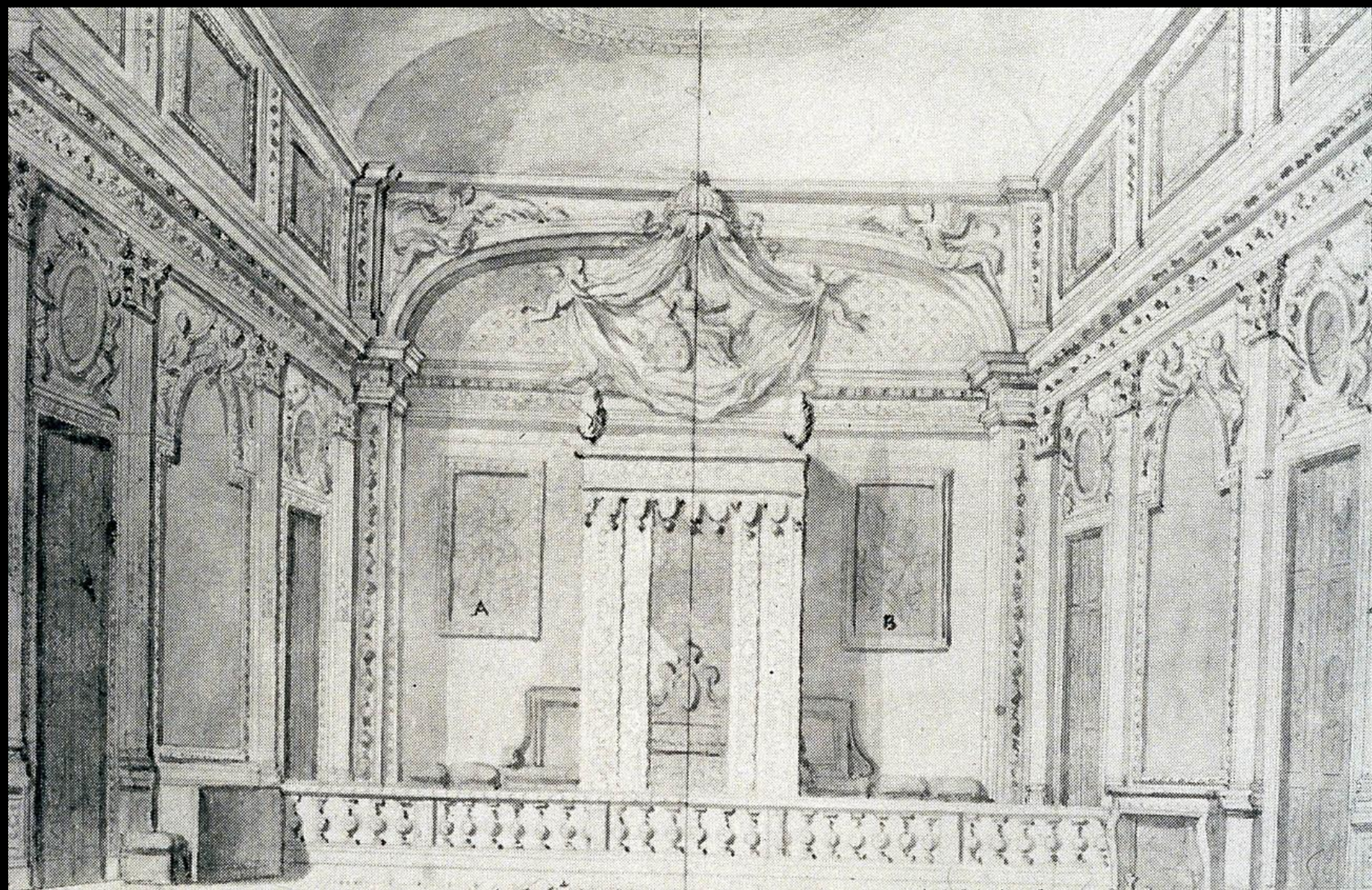














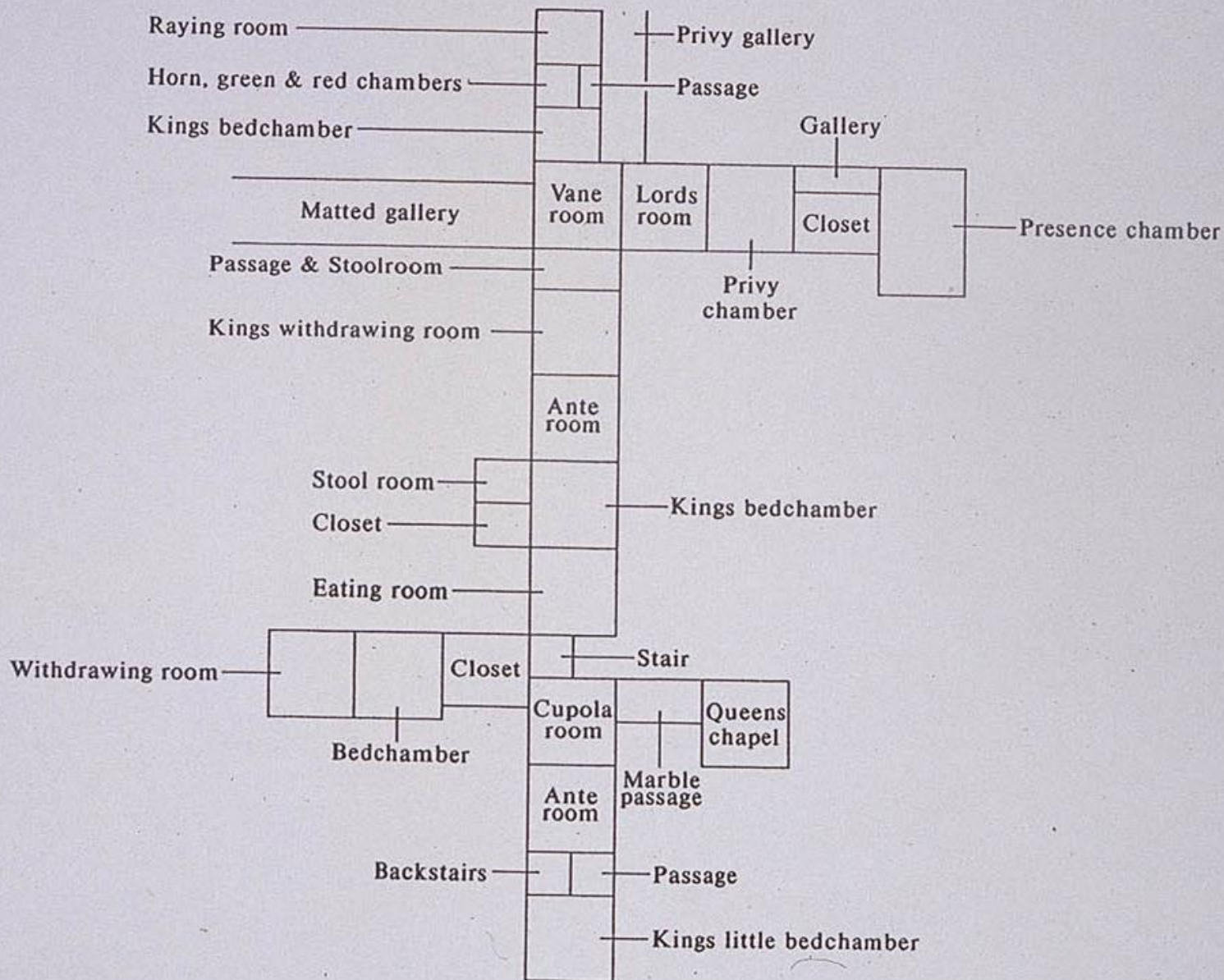
CONNE LE NY LORD MAJOR ACOMPAGNEDE SES COLLEGUES  
VIENT SALVER LA REYNE LVY FAIRE SES PRESENTS



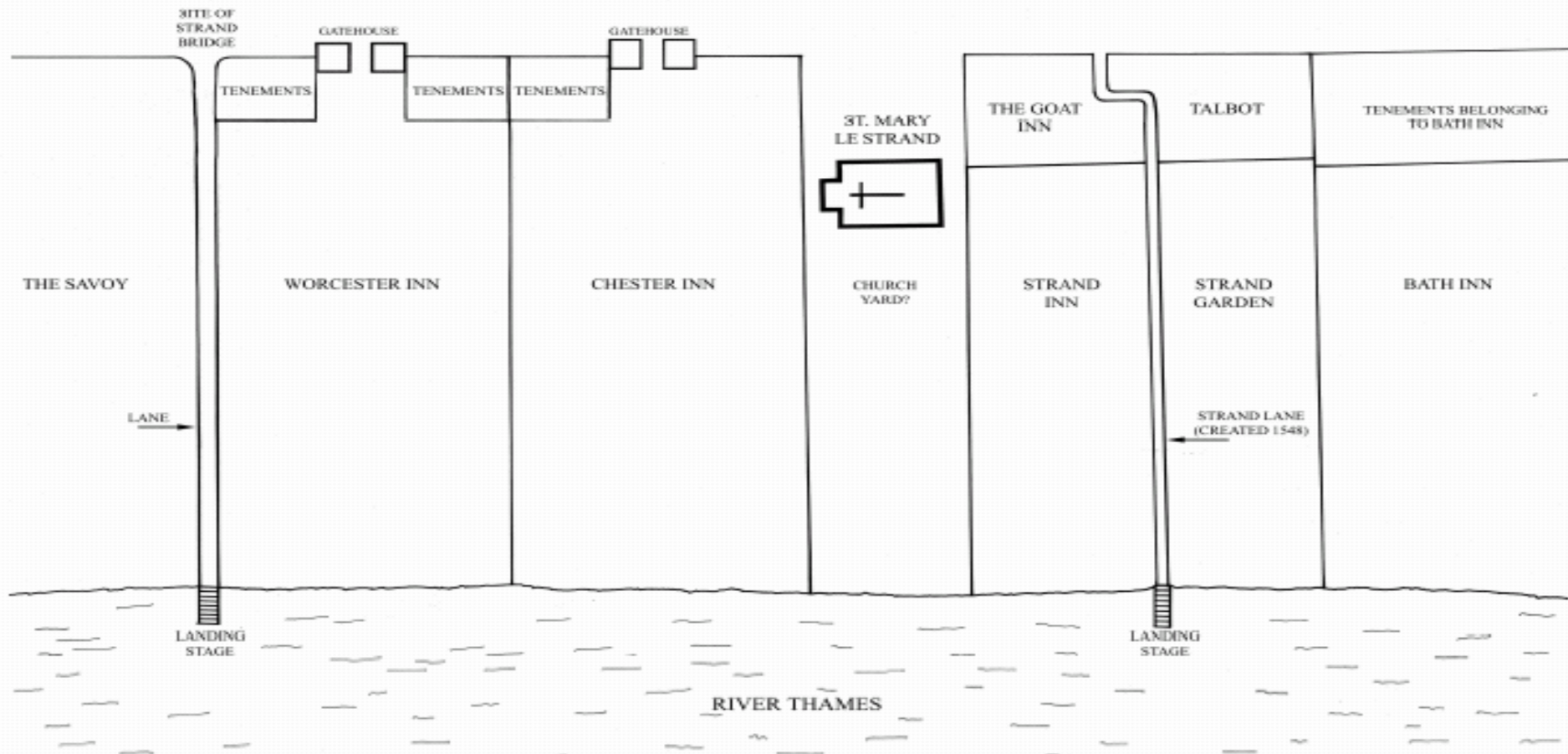




# Diagrammatic layout of Whitehall Palace 1682



THE STRAND



THE STRAND

SITE OF STRAND BRIDGE

GATEHOUSE

GATEHOUSE

TENEMENTS

TENEMENTS

TENEMENTS

ST. MARY LE STRAND

THE GOAT INN

TALBOT

TENEMENTS BELONGING TO BATH INN

THE SAVOY

WORCESTER INN

CHESTER INN

CHURCH

STRAND INN

STRAND GARDEN

BATH INN

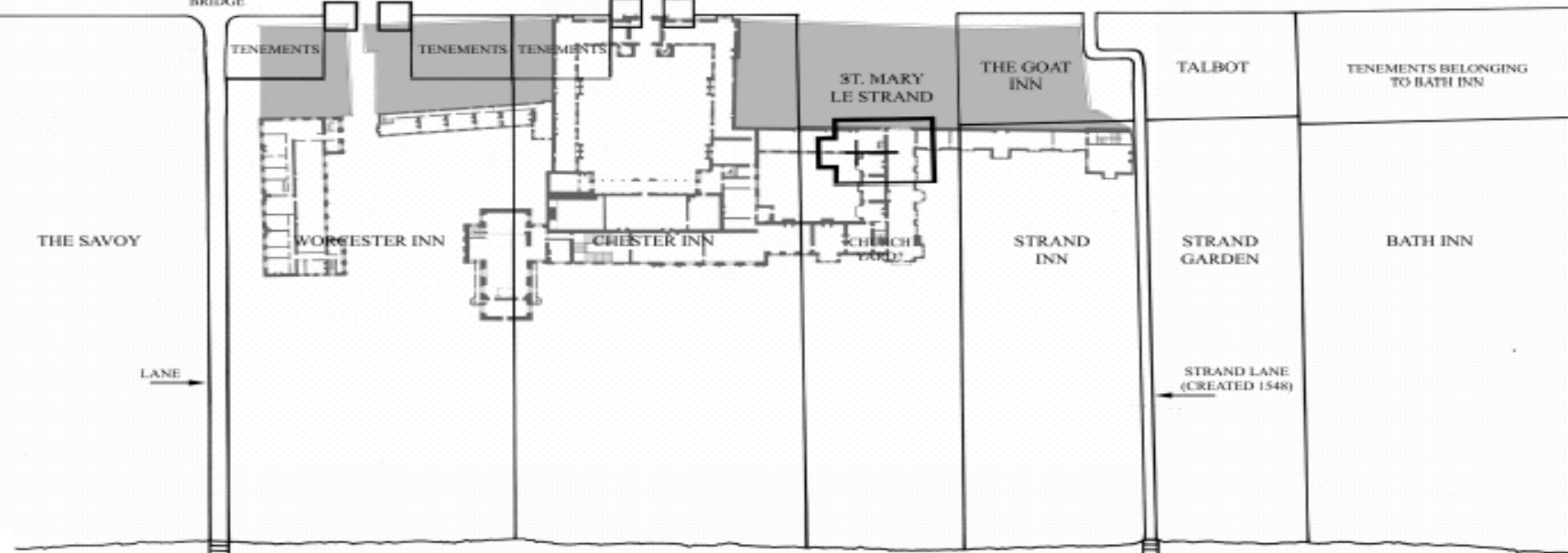
LANE

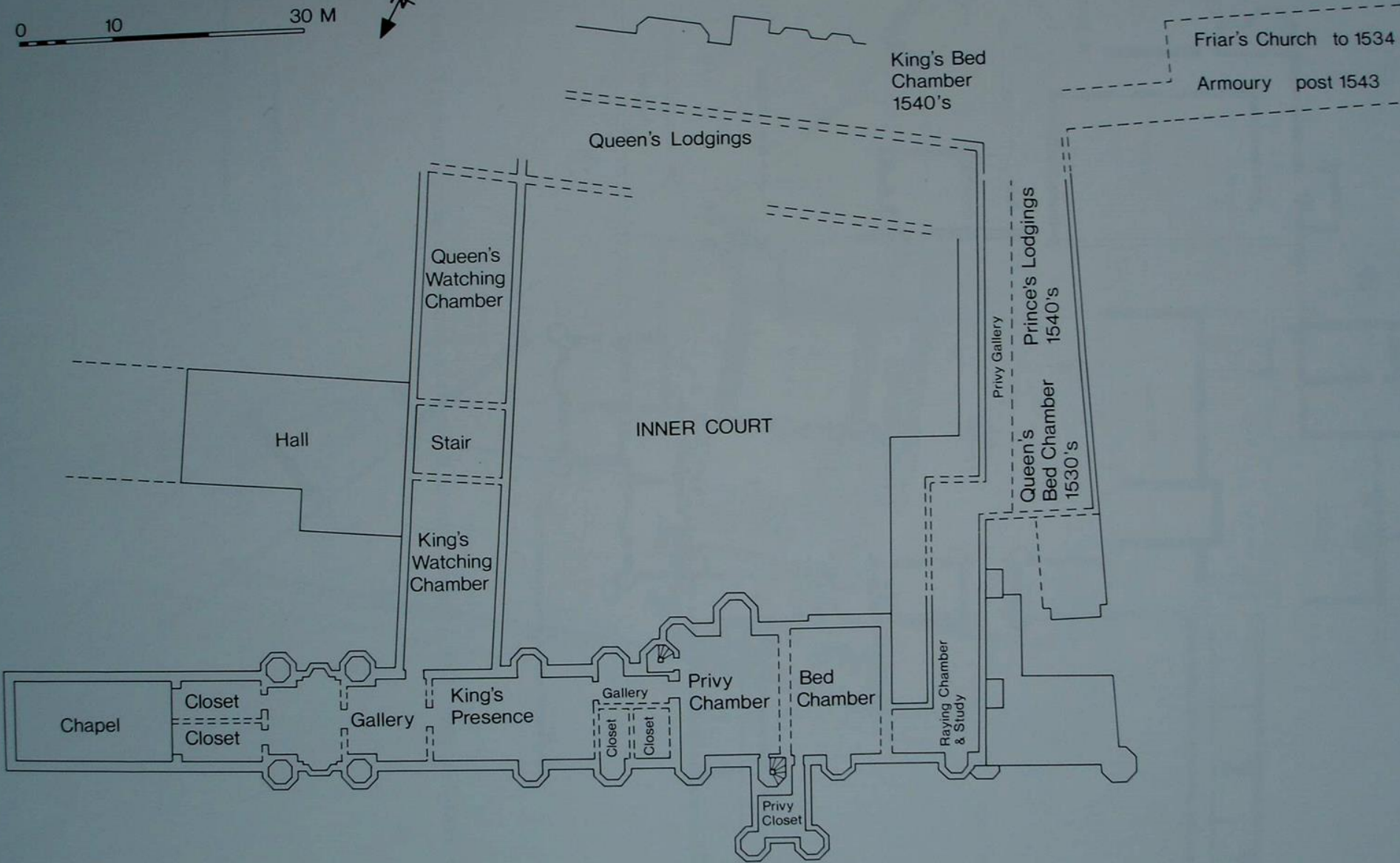
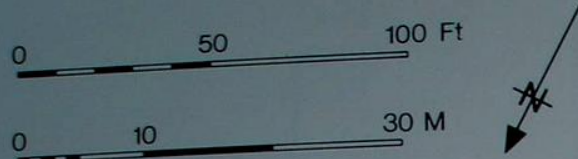
STRAND LANE (CREATED 1548)

LANDING STAGE

LANDING STAGE

RIVER THAMES





Plan 4. Ground Floor, West Wing, 1540-1550















