

# The Romantic Lakes from Wordsworth to Beatrix Potter

JONATHAN BATE



# A T O U R

Thro' the Whole ISLAND of

**GREAT BRITAIN,**

*John* Divided into *Roads*  
**Circuits or Journies.**

Giving a Particular and Diverting  
ACCOUNT of Whatever is CURIOUS, and  
worth OBSERVATION, *Viz.*

- I. A Description of the principal Cities and Towns, their Situation, Magnitude, Government, and Commerce.
- II. The Customs, Manners, Speech, as also the Exercises, Diversions, and Employment of the People.
- III. The Produce and Improvement of the Lands, the Trade and Manufactures.
- IV. The Sea-Ports and Fortifications, the Course of Rivers, and the Inland Navigation.
- V. The Publick Edifices, Seats, and Palaces of the NOBILITY and GENTRY.

*With Useful Observations upon the Whole.*

Particularly fitted for the Reading of such as desire to  
Travel over the ISLAND.

---

V O L. III.

Which completes this Work, and contains a  
TOUR thro' SCOTLAND, &c.

---

*With a Map of SCOTLAND, by Mr. MOLL.*

---

By a GENTLEMAN.

---

L O N D O N,

Printed: And Sold by G. STRAHAN, in Cornhill.  
W. MEARS, at the Lamb without Temple-Bar.  
And J. STAGG, in Westminster-Hall.

M DCC XXVII.



THE  
L I F E  
AND  
STRANGE SURPRIZING  
ADVENTURES  
OF  
ROBINSON CRUSOE,  
Of YORK, MARINER:

Who lived Eight and Twenty Years,  
all alone in an un-inhabited Island on the  
Coast of AMERICA, near the Mouth of  
the Great River of OROONOQUE;

Having been cast on Shore by Shipwreck, where-  
in all the Men perished but himself.

WITH  
An Account how he was at last as strangely deli-  
ver'd by PYRATES.

---

*Written by Himself.*

---

L O N D O N:  
Printed for W. TAYLOR at the Ship in Patern-  
Row. MDCCXIX.



J.M.W. Turner R.A. Del.

W. Radclyffe Sc.







OBSERVATIONS

ON THE

RIVER WYE,

AND SEVERAL PARTS OF

SOUTH WALES, &c.

RELATIVE CHIEFLY TO

PICTURESQUE BEAUTY;

MADE

In the Summer of the Year 1770,

SECOND EDITION.

---

By WILLIAM GILPIN, M. A.

PREBENDARY OF SALISBURY; AND

VICAR OF BOLDRE IN NEW FOREST, NEAR LYMINGTON.

---

L O N D O N;

PRINTED FOR R. BLAMIRE, IN THE STRAND.

M.DCC.LXXXIX.

OBSERVATIONS,

RELATIVE CHIEFLY TO

PICTURESQUE BEAUTY,

Made in the Year 1772,

On several PARTS of ENGLAND;

PARTICULARLY THE

MOUNTAINS, AND LAKES

O F

CUMBERLAND, AND WESTMORELAND.

---

V O L. I.

---

By WILLIAM GILPIN, M. A.

PREBENDARY OF SALISBURY;

AND

VICAR OF BOLDRE, IN NEW-FOREST, NEAR LYMINGTON.

---

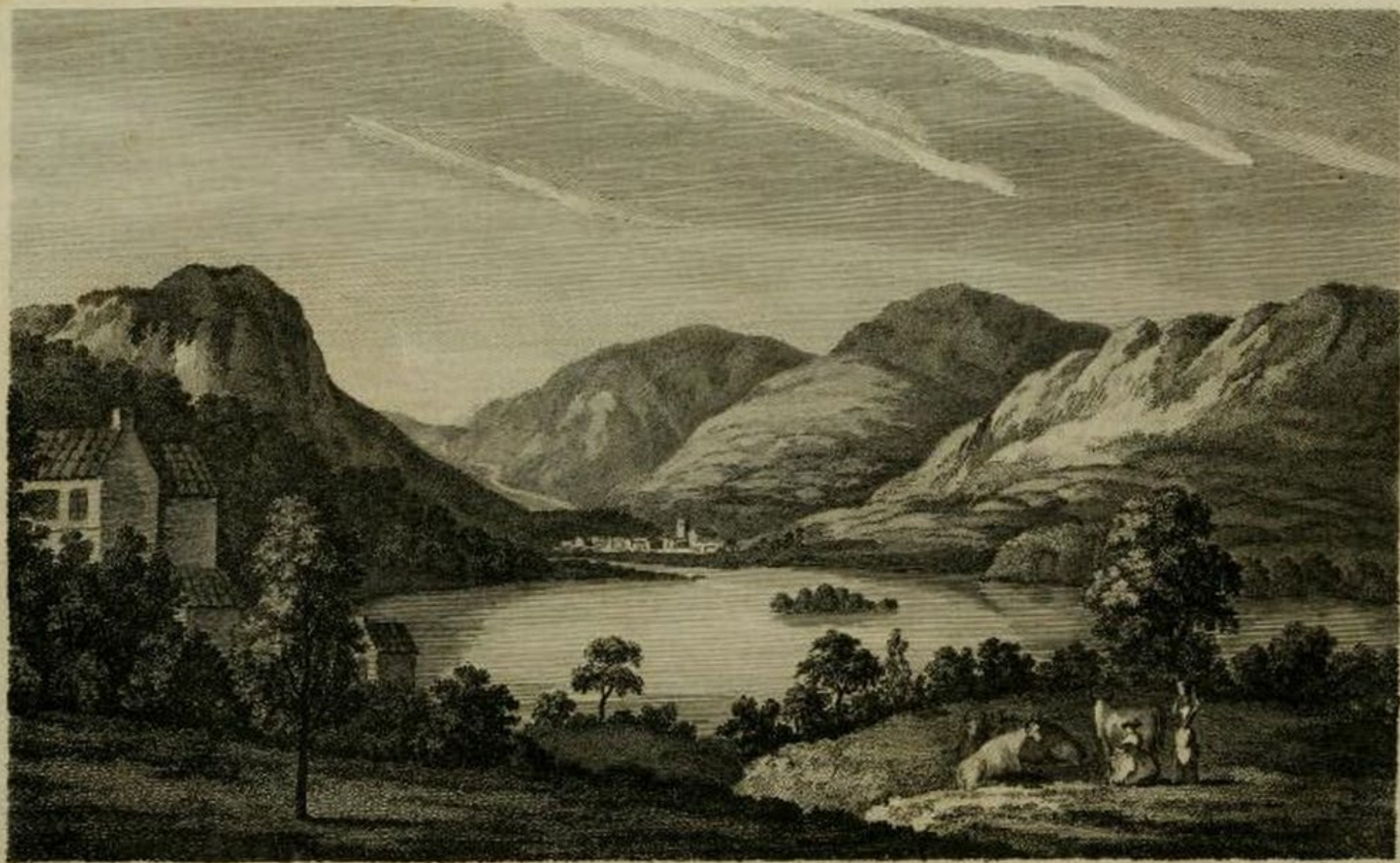
L O N D O N;

PRINTED FOR R. BLAMIRE, STRAND.

M.DCC.LXXXVI.







*J. Frost delin.*

## GRASMERE

*Engraved by J. Caldwell.*

*Published as the Art Society's Fair, 1808, by W. P. ...*

A  
G U I D E  
TO THE  
L A K E S,  
IN  
CUMBERLAND, WESTMORLAND,  
AND  
LANCASHIRE.

---

BY THE AUTHOR OF  
THE ANTIQUITIES OF FURNESS.

---

For nature here  
Wanton'd as in her prime, and play'd at will  
Her virgin fancies.—  
Wild shovs rule or art [and beauteous form'd]  
A happy rural seat of various view,

*Paradise lost.*

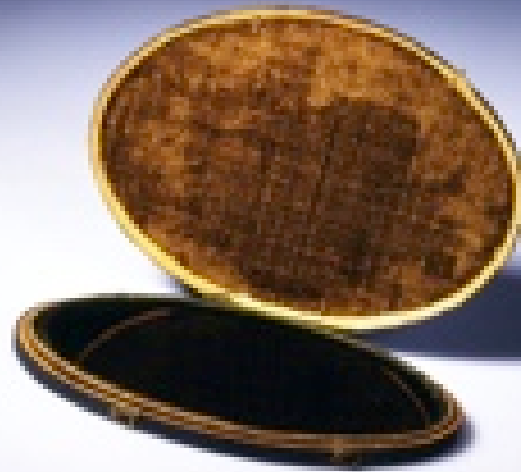
---

THE SECOND EDITION  
REVISED THROUGHOUT AND GREATLY ENLARGED.

---

L O N D O N:

Printed for RICHARDSON and URQUHART,  
under the Royal Exchange;  
J. RORION, New Bond Street; and  
W. FERRINGTON, Kendal,





TO  
TOURISTS

IN GENERAL,

*But more particularly to those who have taken,*

OR

INTEND TO TAKE,

THE

TOUR OF THE LAKES,

IN

*Lancashire, Westmorland, and Cumberland,*

THE FOLLOWING

OPERA

IS MOST HUMBLY INSCRIBED

DRAMATIS PERSONÆ.

SIR CHARLES PORTINSCALE.°

BOB KIDDY.

FIRST PEDESTRIAN.

SECOND PEDESTRIAN.

BILLY SAMPLE, *a Bagman.*°

SPEEDWELL, *Servant to SIR CHARLES.*

LANDLORD.

BEGGAR *and his Dog.*

MISS BECCABUNGA VERONICA.°

LYDIA.

ANNA KATHARINA, *their Maid.*

SCENE.—KESWICK *and its Environs.*



See the engraving of the

*View on Windermere*

Engraved by J. G. Smith, from a drawing by W. G. Smith.

W. G. Smith del.



A COMPLETE  
GUIDE TO THE LAKES,

CONTAINING  
*Minute Directions for the Tourist;*

WITH  
MR. WORDSWORTH'S

DESCRIPTION OF THE SCENERY OF THE COUNTRY, &C.

AND  
*Five Letters*

ON THE  
GEOLOGY OF THE LAKE DISTRICT,

BY THE  
REV. PROFESSOR SEDGWICK.

*Fourth Edition.*

REVISED BY THE PUBLISHERS.

KENDAL:  
PUBLISHED BY JOHN HUDSON.  
LONDON:  
LONGMAN AND CO. AND WHITTAKER AND CO.  
LONDON, WILK. GARDNER—MANCHESTER, WHITE AND CO.

1834.



I wish to address more general readers – any intelligent traveller whose senses are open to the beauties of the country around him, and who is ready to speculate on such matters of interest as it offers to him. I will therefore endeavour to avoid technical language as far as I am able, and I do not profess to teach, in a few pages, the geology of a most complicated country (for that would be an idle attempt); but rather to open the mind to the nature of the subject, and to point out the right way towards a comprehension of some of its general truths.

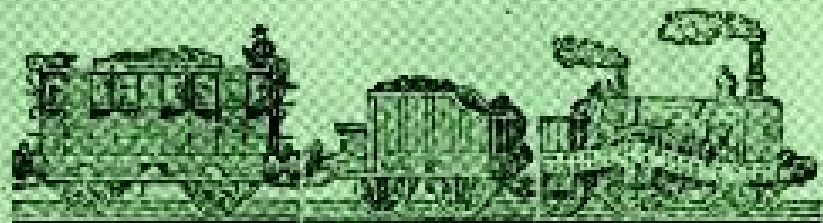
**WILLIAM  
WORDSWORTH**  
**GUIDE TO  
THE LAKES**

Edited by Ernest de Sélincourt





Benny Horne (National Trust solicitor), Robert Hunter, his daughter Winifred and Canon Hardwick Rawnsley in the Lake District, 1900



## KENDAL & WINDERMERE RAILWAY.

Opening through to Windermere,

On TUESDAY, 20th April, 1847.

SECOND CLASS

LEAVING KENDAL AT 10 O'CLOCK, A.M.,

TO RETURN AT 3 P.M.

## SONNET

ON THE PROJECTED KENDAL AND WINDERMERE RAILWAY.

Is there no nook of English ground secure  
From rash assault? Schemes of retirement sown  
In youth, and mid the busy world kept pure  
As when their earliest flowers of hope were blown,  
Must perish? How can they this blight endure?  
And must he too the ruthless change bemoan  
Who scorns a false military lure  
Mid his paternal fields at random thrown?  
Baffle the threat, bright scene, from Orrest-head  
Given to the passing traveller's rapturous glance:  
Plead for thy peace, thou beautiful romance  
Of nature; and, if human hearts be dead,  
Speak, passing winds; ye torrents, with your strong  
And constant voice, protest against the wrong.

WILLIAM WORDSWORTH.

RYDAL MOUNT,

October 12th, 1844.

Let not the above be considered as merely a poetical effusion. The degree and kind of attachment which many of the yeomanry feel to their small inheritance can scarcely be over-rated. Near the house of one of them stands a magnificent tree, which a neighbour of the owner advised him to fell for profit's sake. "Fell it," exclaimed the yeoman, "I had rather fall on my knees and worship it." It happens, I believe, that the intended railway would pass through this little property, and I hope that an apology for the answer will not be thought necessary by one who enters into the strength of the feeling.

W. W.



Canon Rawnsley & Beatrix Potter



Mrs Tiggywinkle,  
with Catbells behind

