

Mathematics and the Medici: Instruments from Late Renaissance Florence and a British Connection

by

Dr Jim Bennett,

Oxford Museum for the History of Science





Cosimo I de' Medici, Duke / Grand Duke, 1537-1569





Francesco I de' Medici, Grand Duke 1574-1587



Ferdinando I de' Medici, Grand Duke 1587-1609



Cosimo II de' Medici, Grand Duke, 1609-1621





Ferdinando II de' Medici, Grand Duke 1621-1670



Leopold de' Medici (1617-1675)

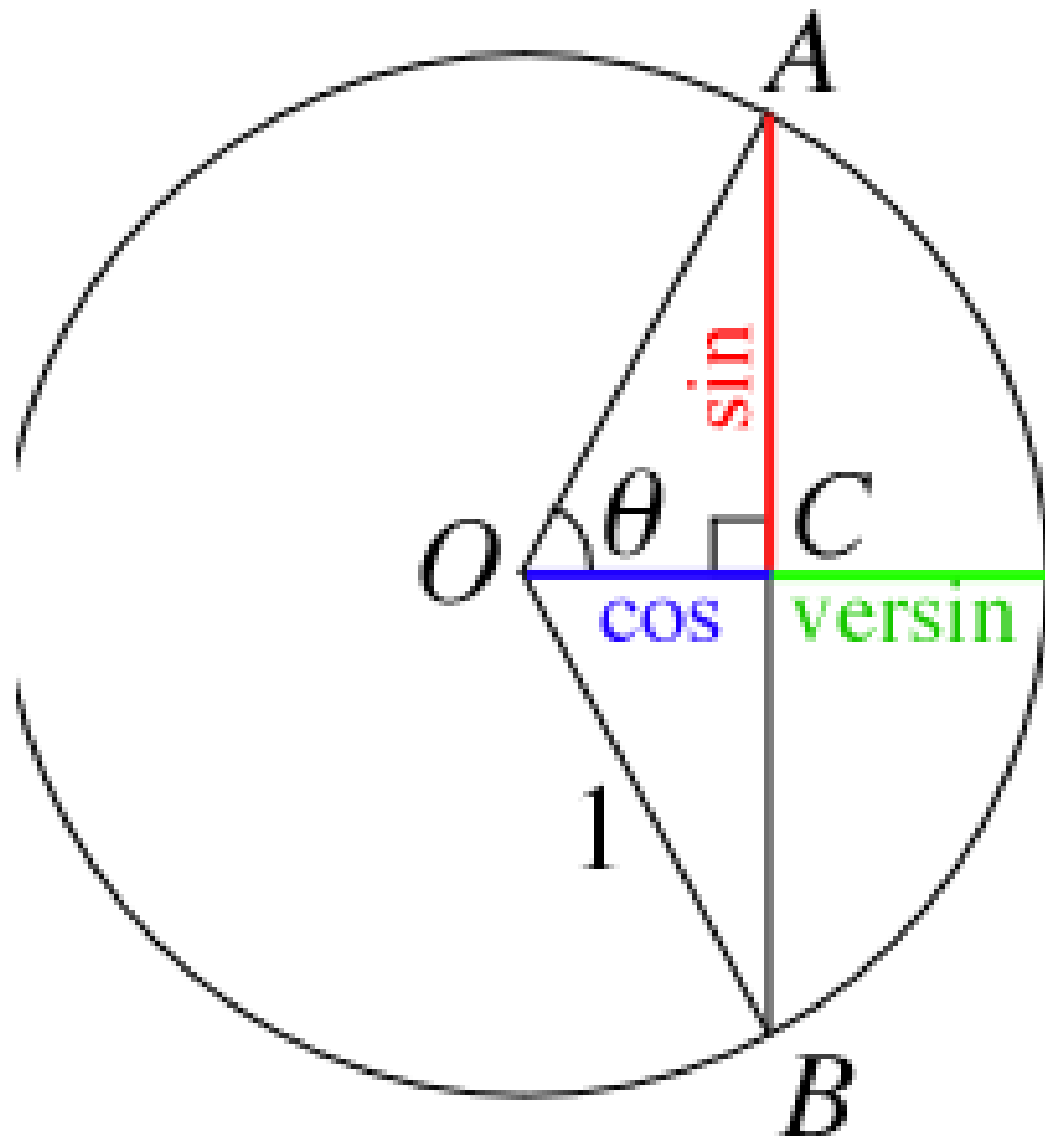
Appointed Cardinal in 1667, end date for the Accademia del Cimento.





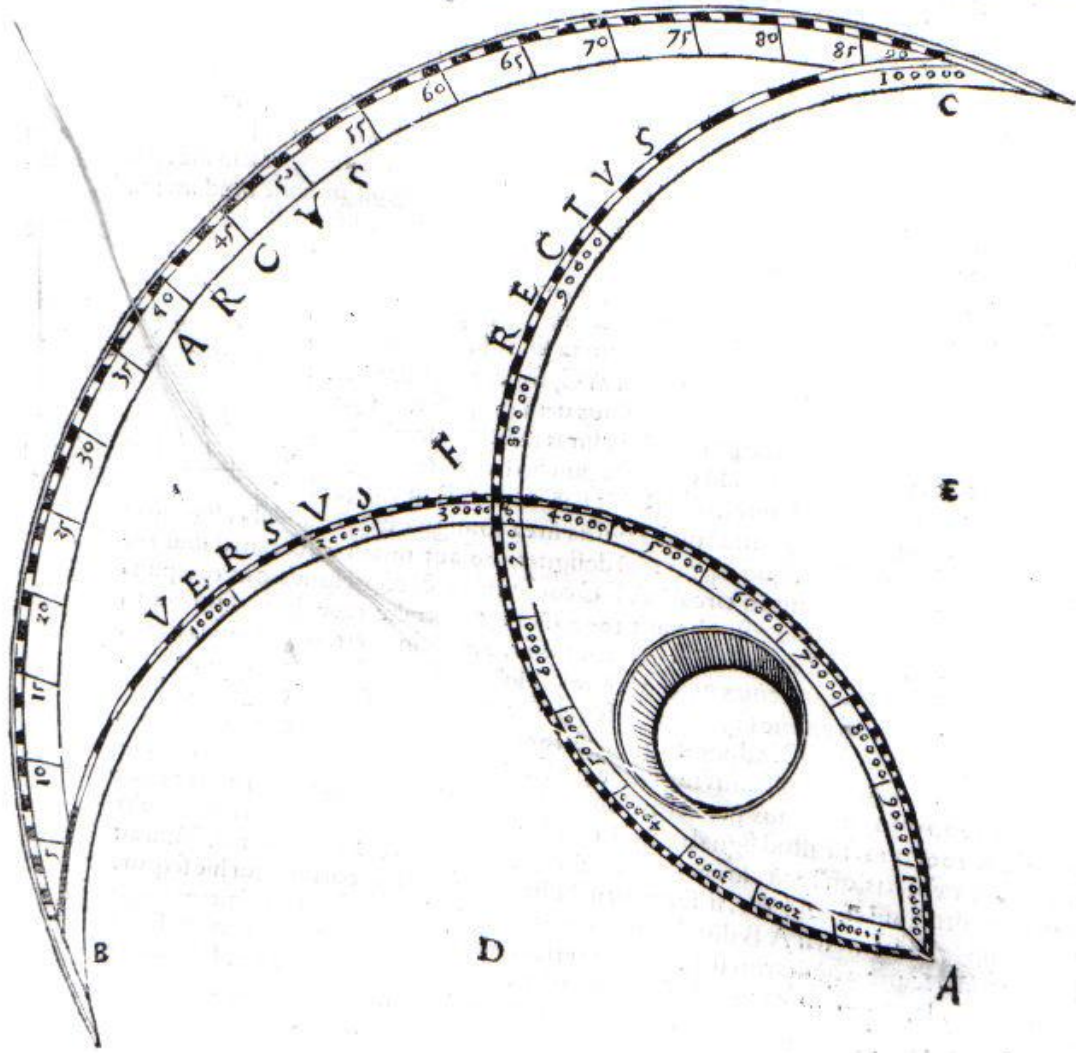




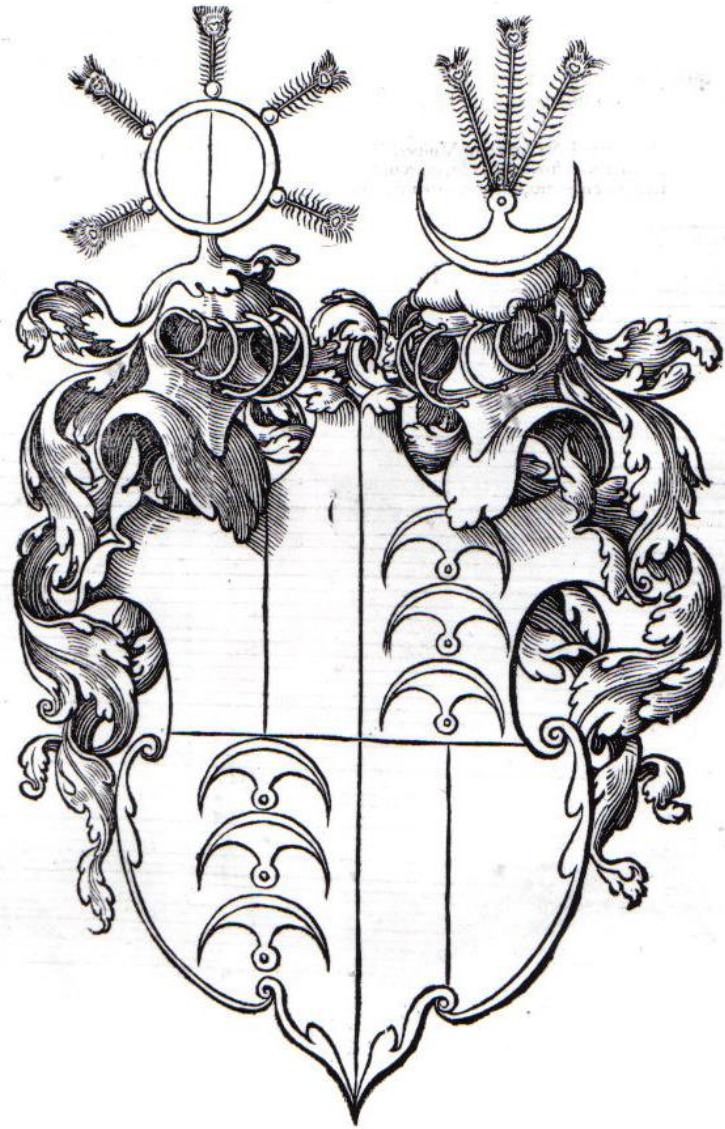




Faciem itaq; huius iam præparati instrumenti hic tibi propositâ rectius intuere.



INSIGNIA DN. CHRISTHOPHORI
A STADION, EPISCOPI AVGVSTEN:



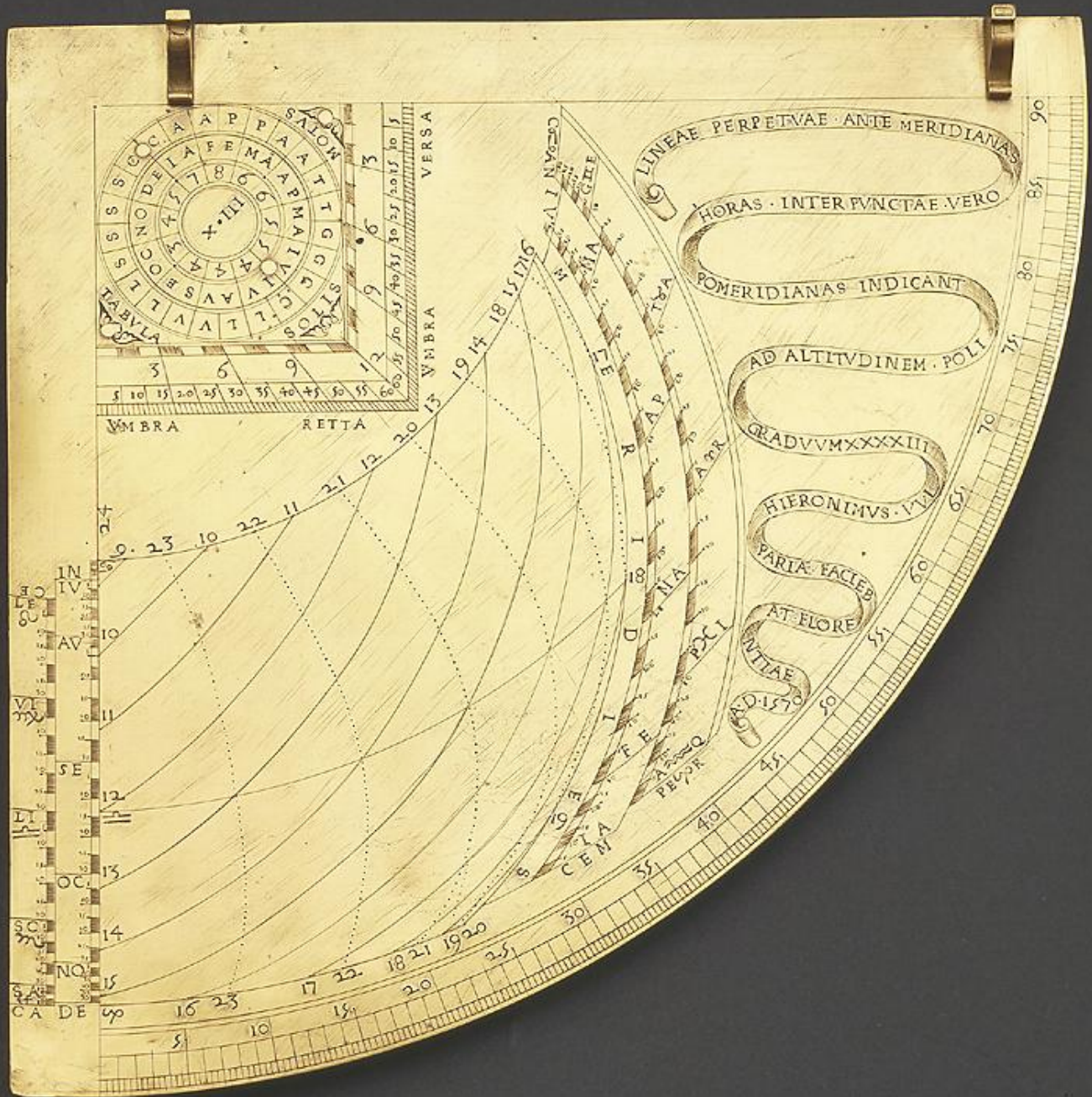


Scaphe Dial

Signed by Stefano
Buonsignori

Dated 1584; Florence





Quadrant
 Signed by
 Girolamo della
 Volpaia
 Dated 1570;
 Florence

Nocturnal And Quadrant
Signed by Eufrosino della Volpaia
Dated 1520; Florence





Nocturnal And
Sundial
Signed by
Girolamo della
Volpaia
Dated 1567;
Florence

Astrolabe

Signed by Georg Hartmann

Dated 1545; Nuremberg

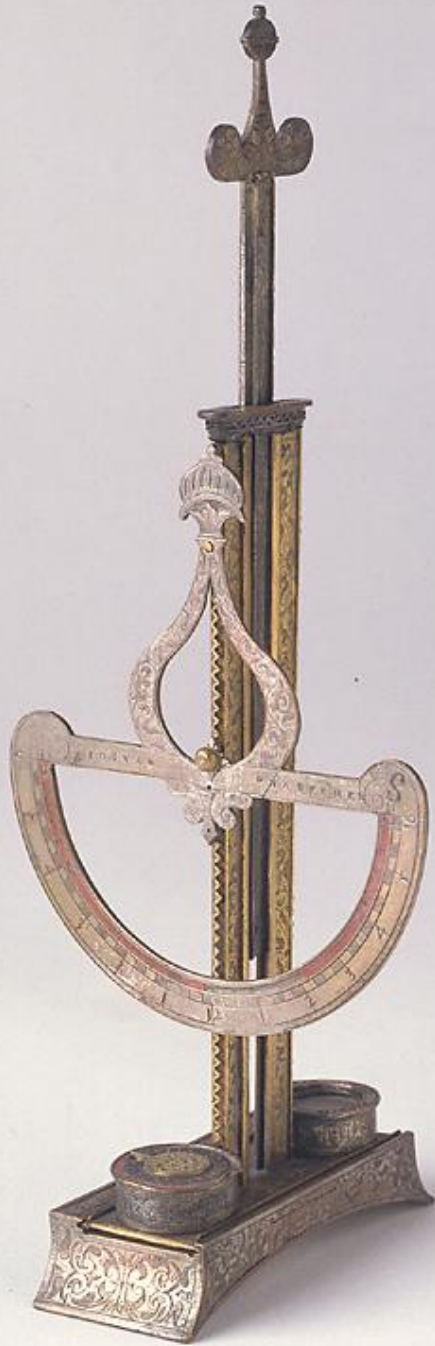
Gilt copper; 145 mm in
diameter





Astrolabe
Attributed to Gualterus
Arsenius
circa 1570; Flemish

Gunner's Sight And Level
Signed by Josua Habermel
Later 16th century; Prague

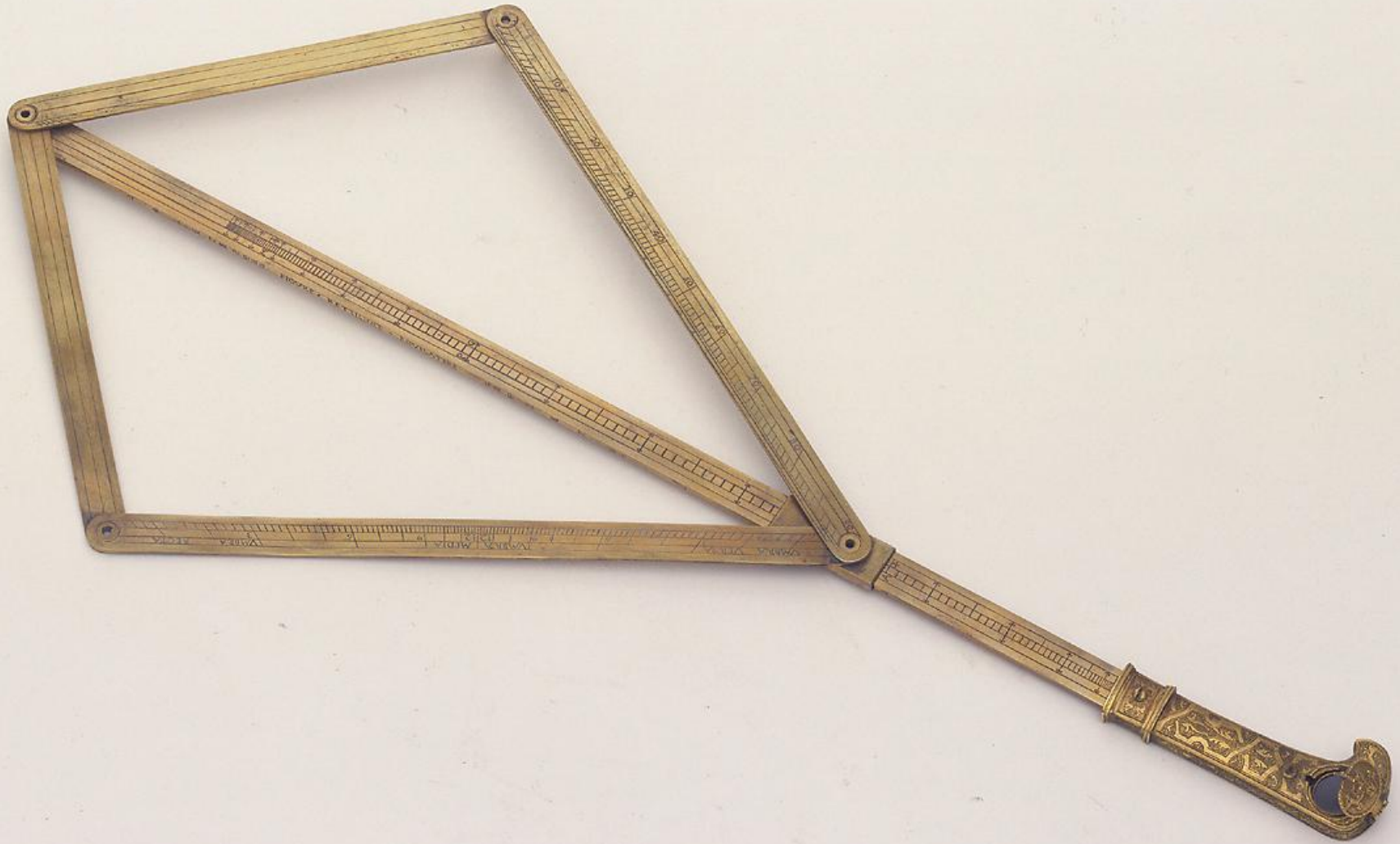




Gunner's Caliper
Signed by Lorenzo Batecin
16th century; Venice



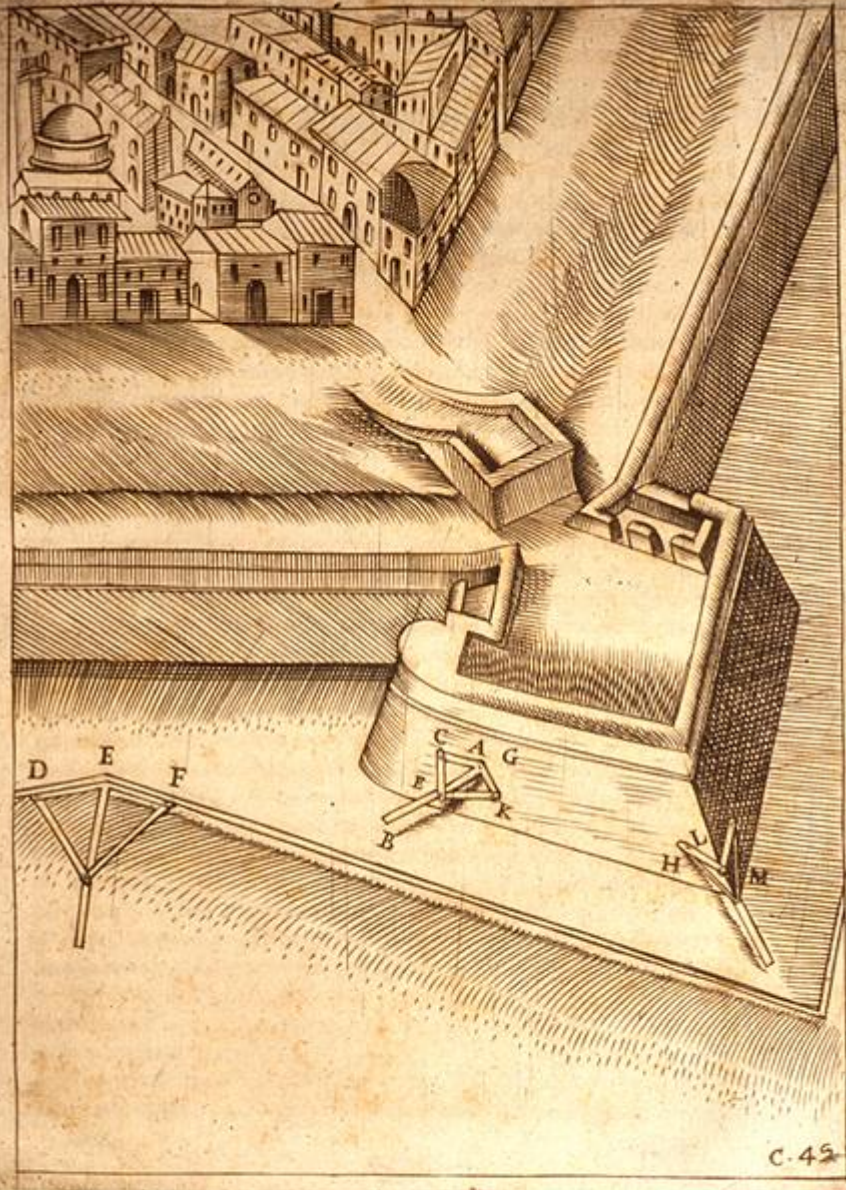
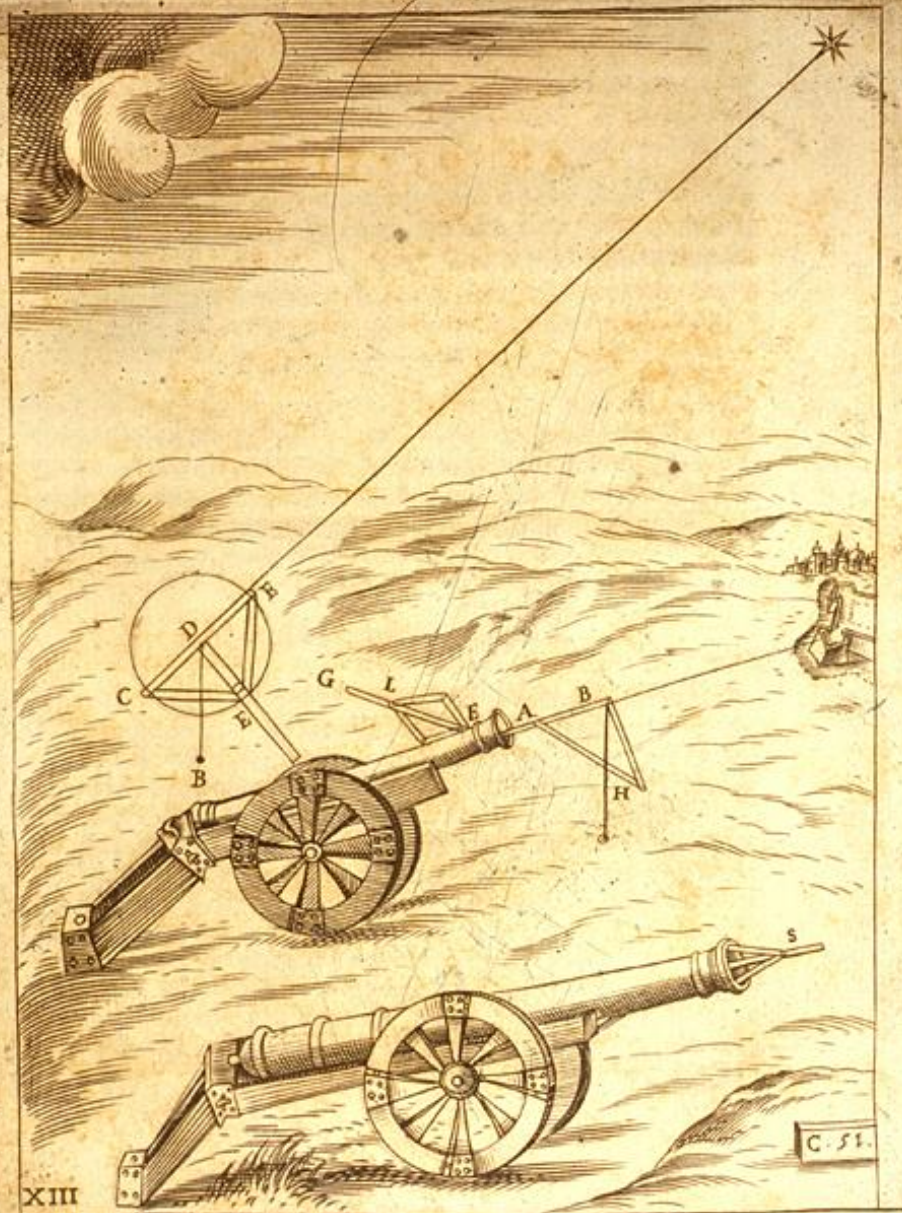
Gunnery Instrument
Signed by Baldassarre Lanci
Dated 1557; Italian

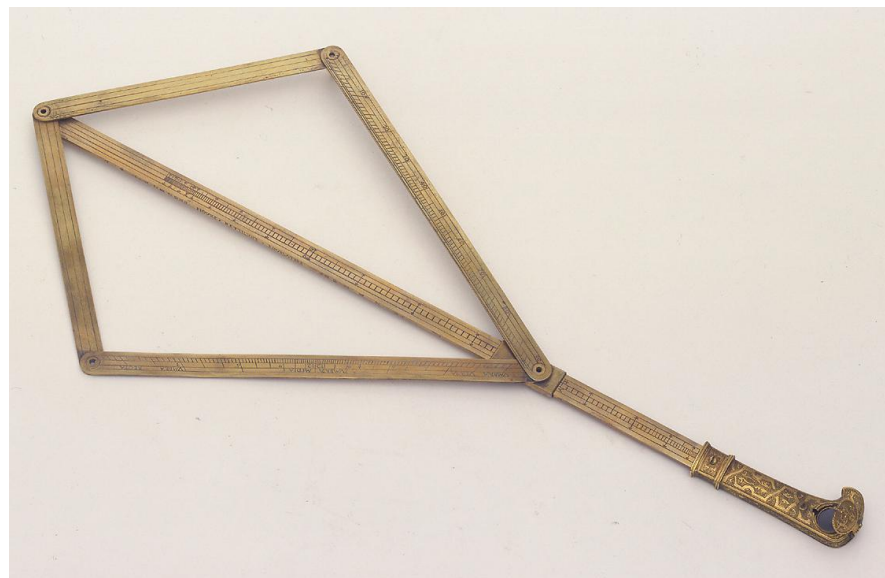
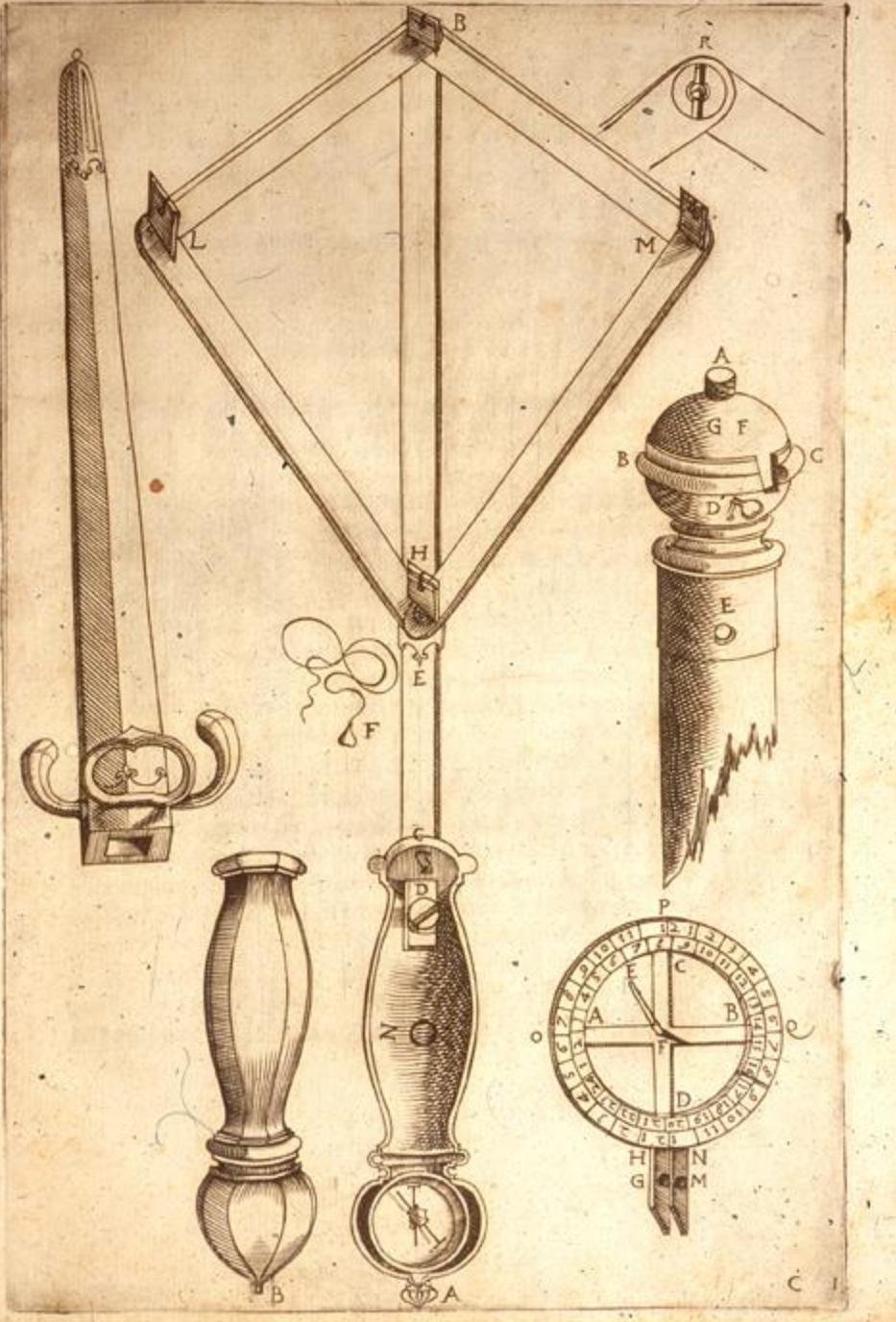


Radio Latino

Unsigned

Later 16th century; Italian





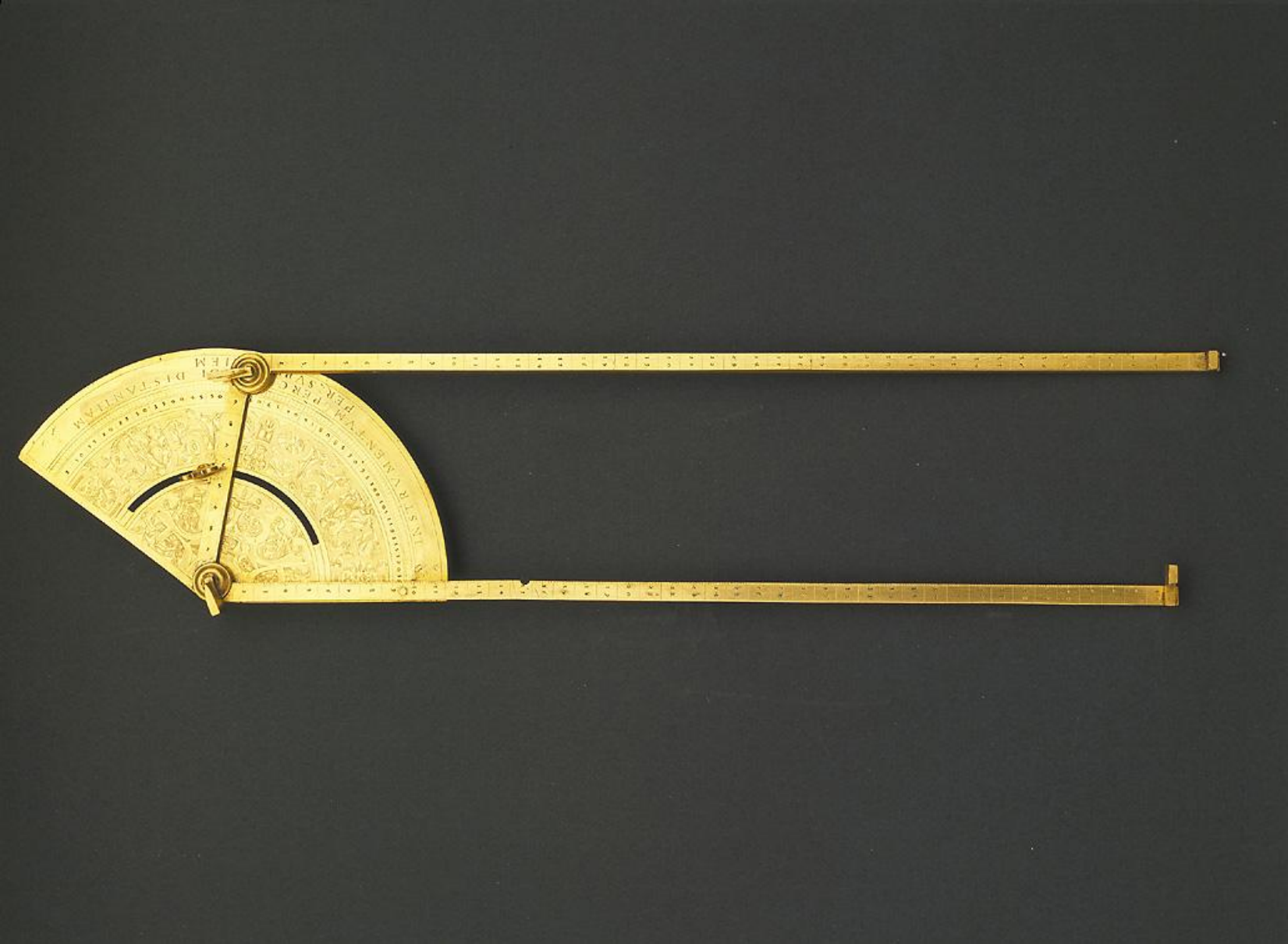


Triangulation Instrument

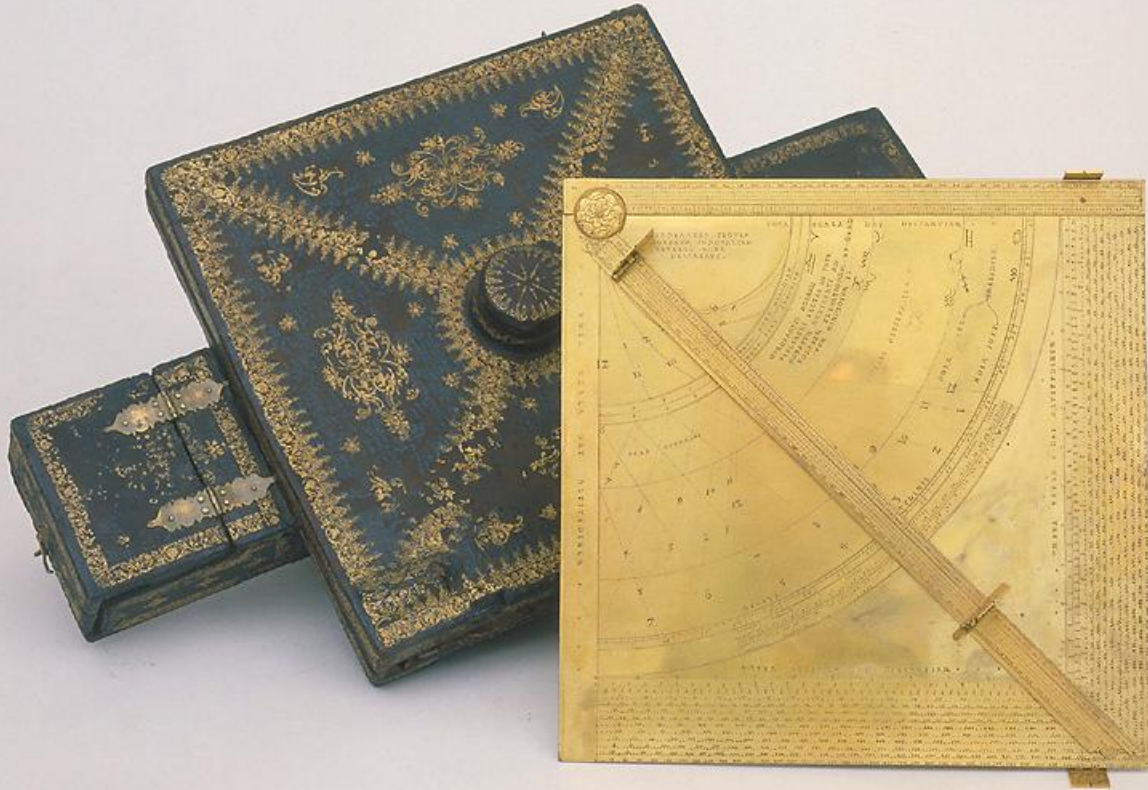
Signed by Paolo
Massucci

Dated 1604; Lucca





Triangulation Instrument, Attributed to Baldassarre Lanci
16th century; Florence



Quadrant

Signed by Christoph Schissler

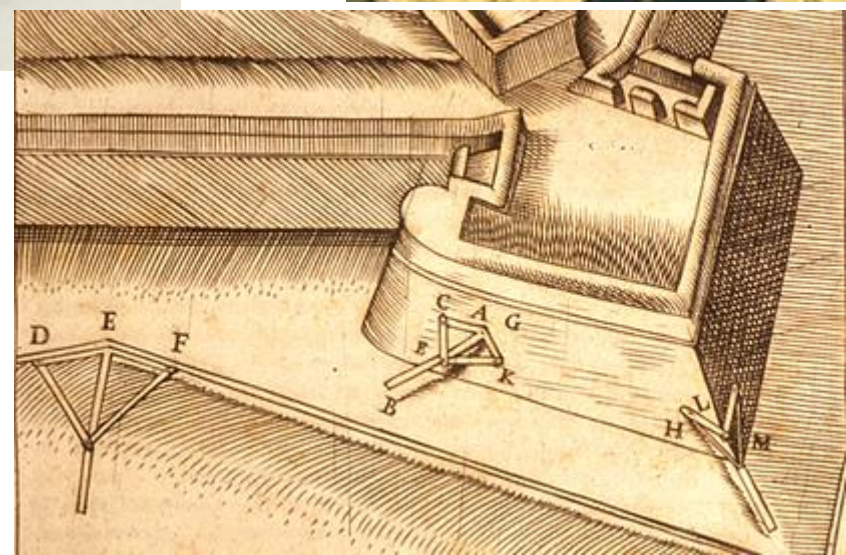
Dated 1599; Augsburg



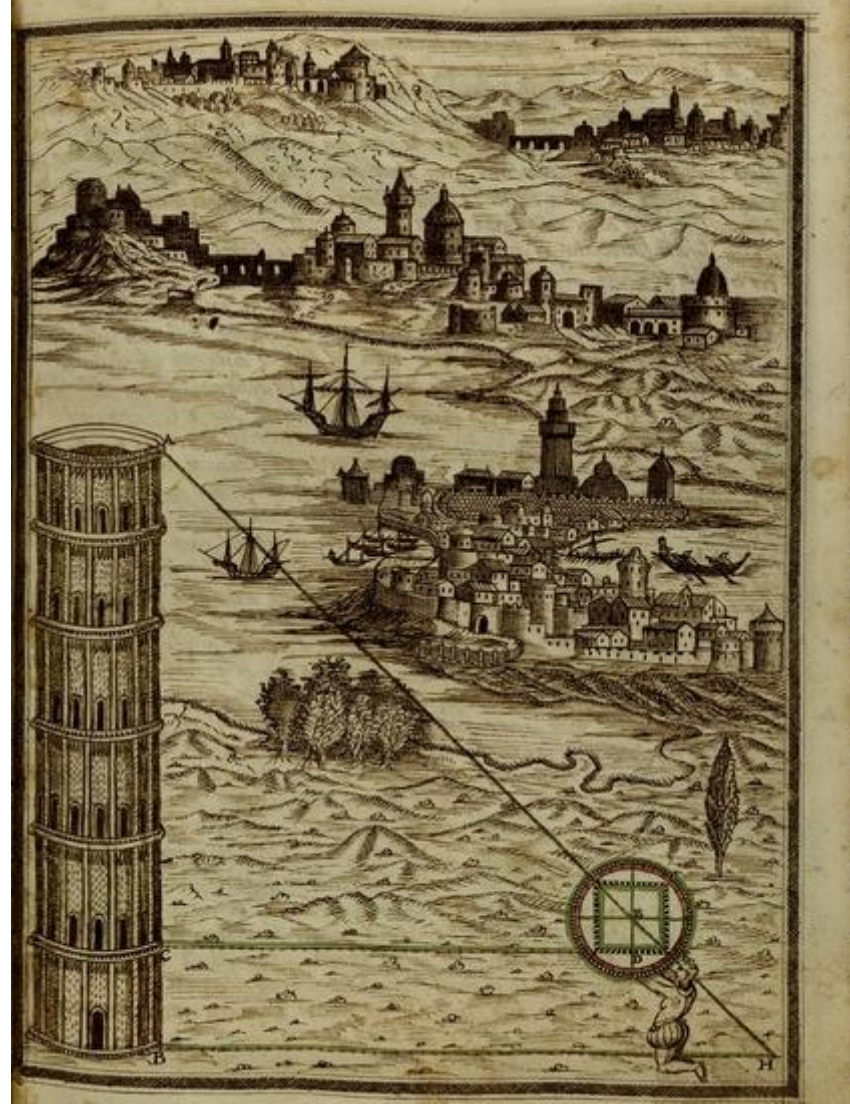
Theodolite

Unsigned

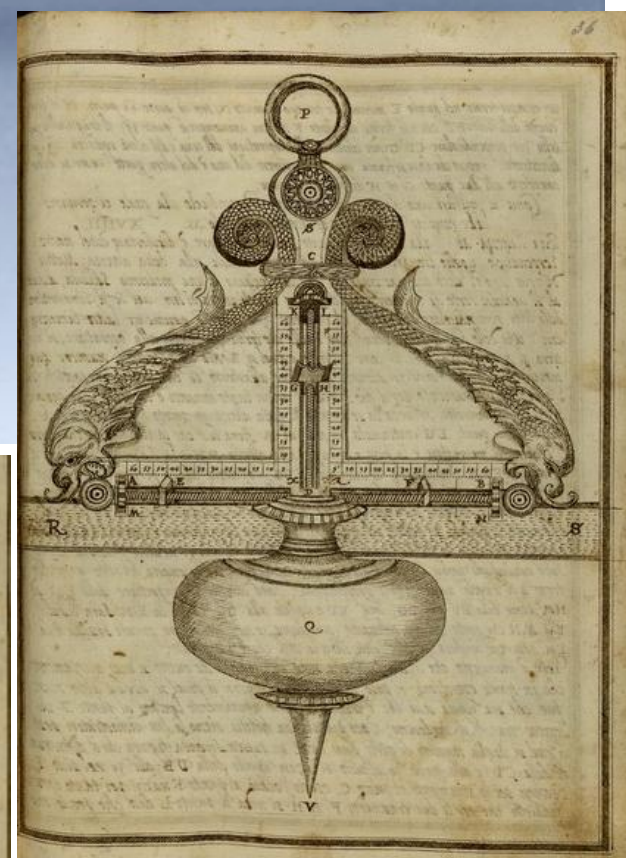
16th century; Italian



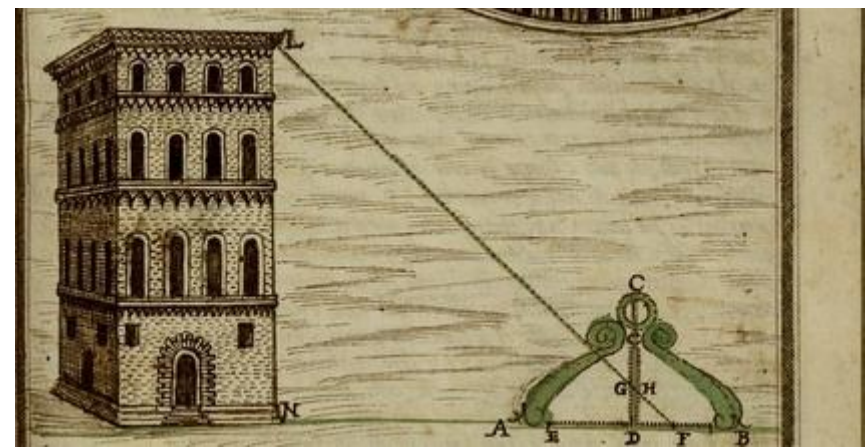
Theodolite
Signed by Erasmus
Habermel
Late 16th century;
Prague

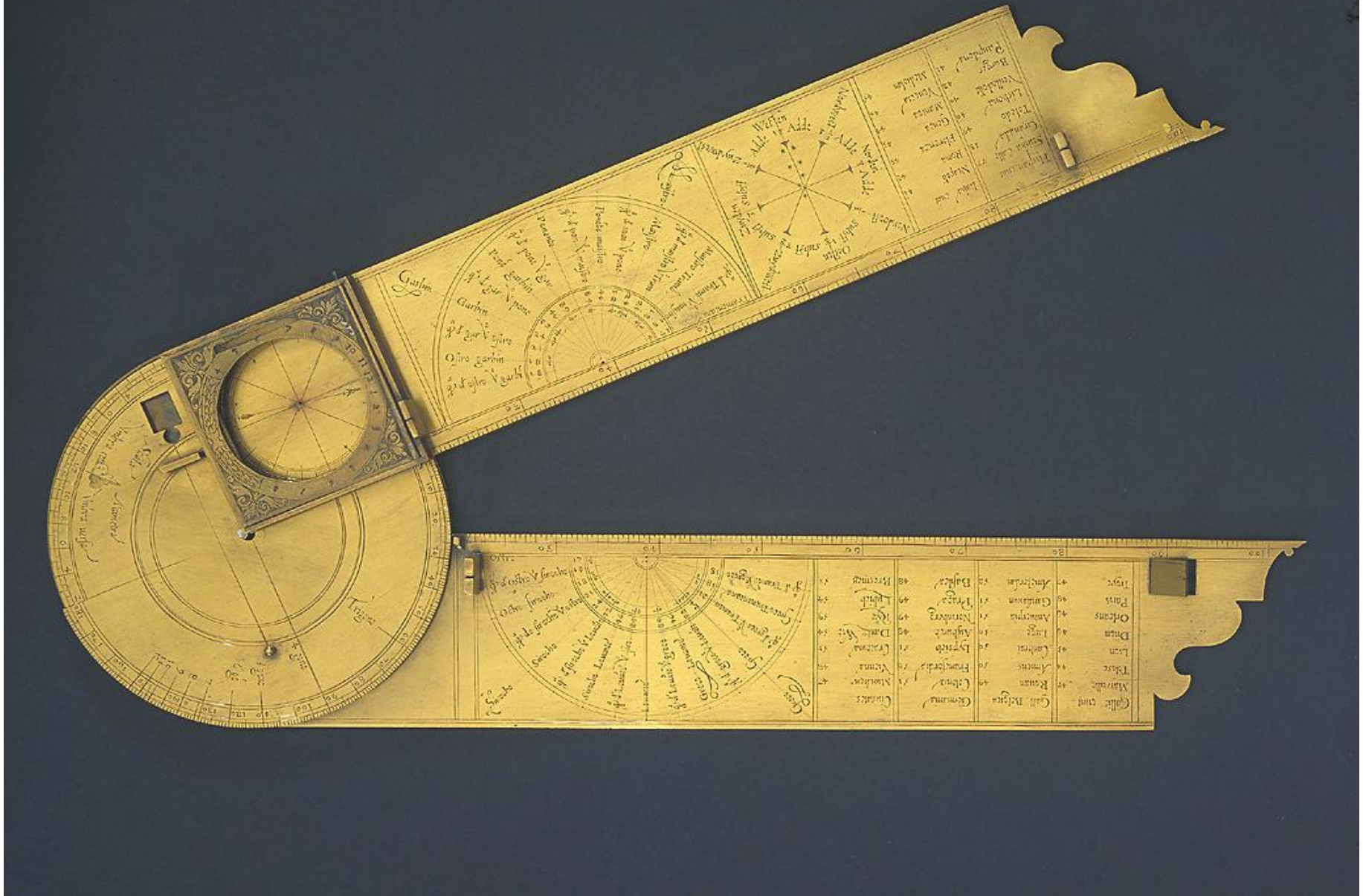


Antonio Santucci, *Trattato di diuersi istrumenti matematici che si conseruano al presente nella Guardaroba del Gran Duca di Toschana*

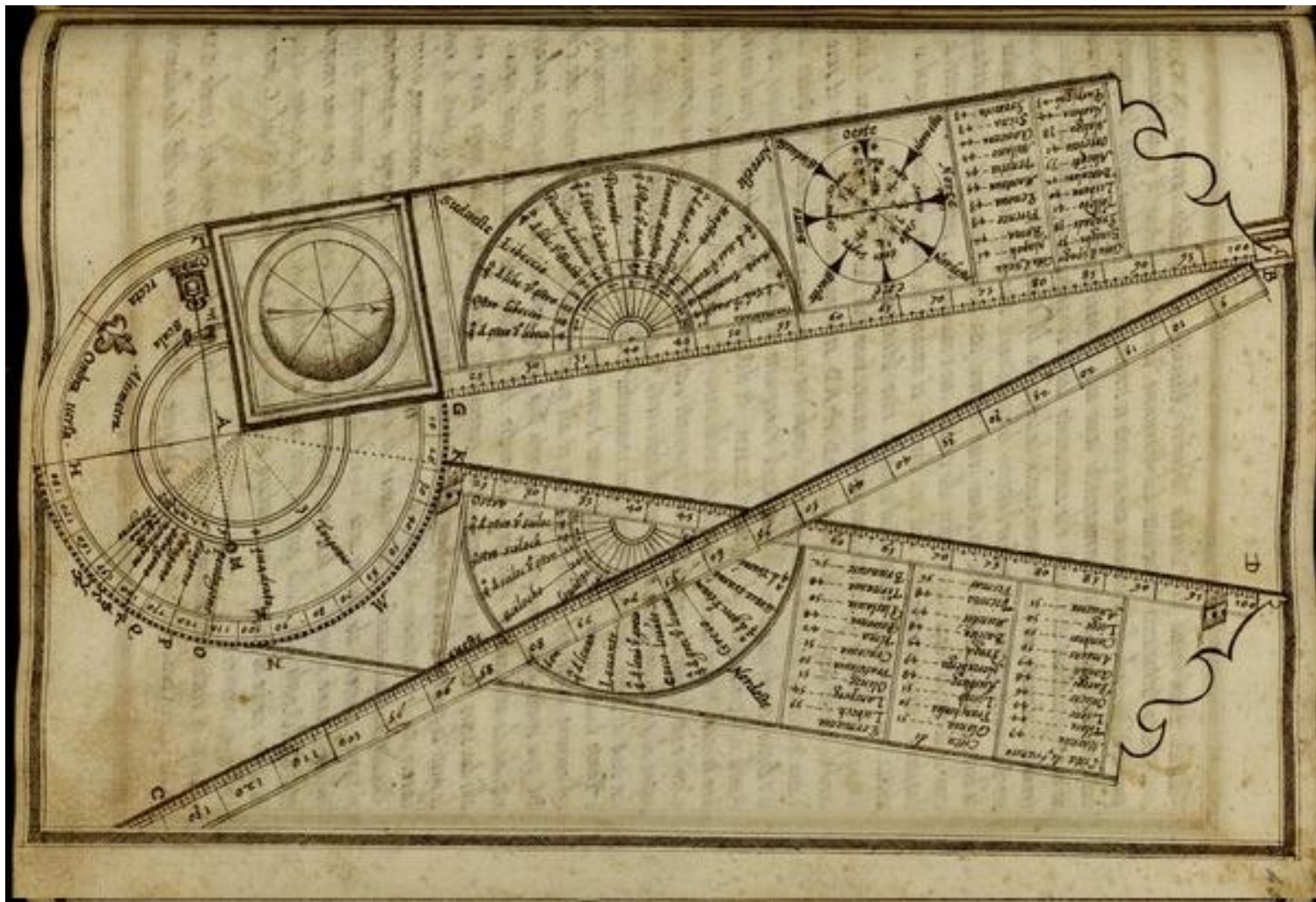


Level
Unsigned
16th century;
Italian





Folding Rule, Signed by Antonio Bianchini
16th century; Italian

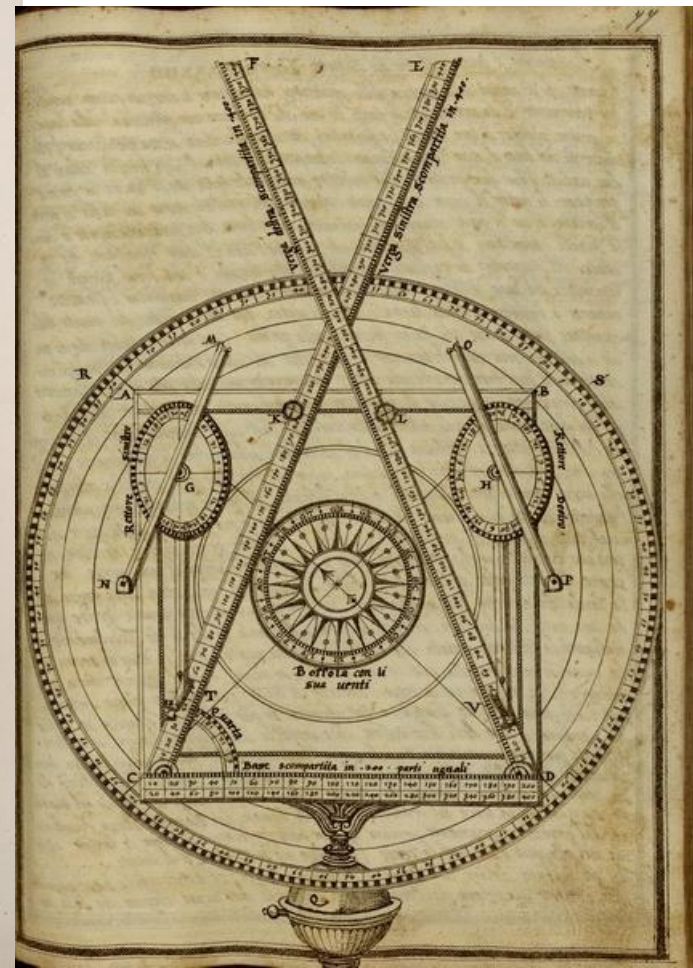




Surveying Instrument

Signed by Baldassarre
Lanci

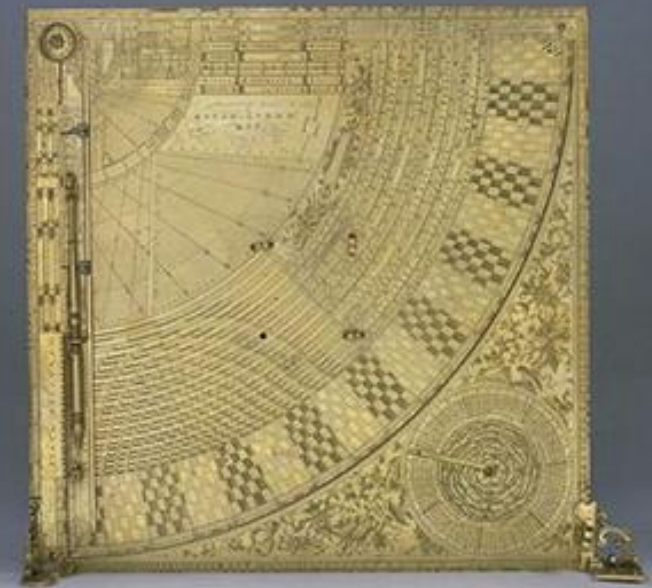
Dated 1557; Italian



Quadrant

Signed by Tobias Volckmer

Dated 1608; Brunswick







LE OPERAZIONI
DEL COMPASSO
GEOMETRICO,

ET MILITARE.

DI

GALILEO GALILEI
NOBIL FIORENTINO

LETTOR DELLE MATEMATICHE
nello Studio di Padoua.

Dedicato

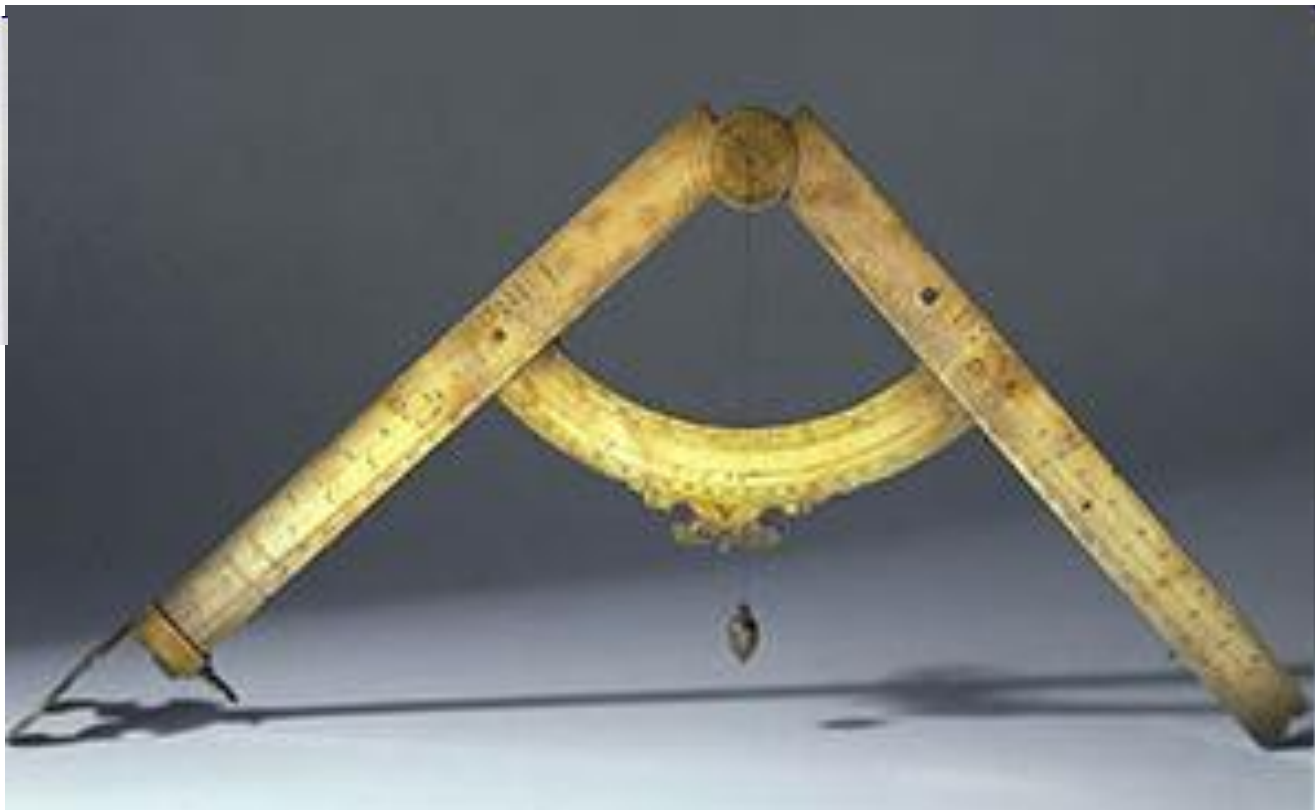
AL SERENISS. PRINCIPE DI TOSCANA
D. COSIMO MEDICI.

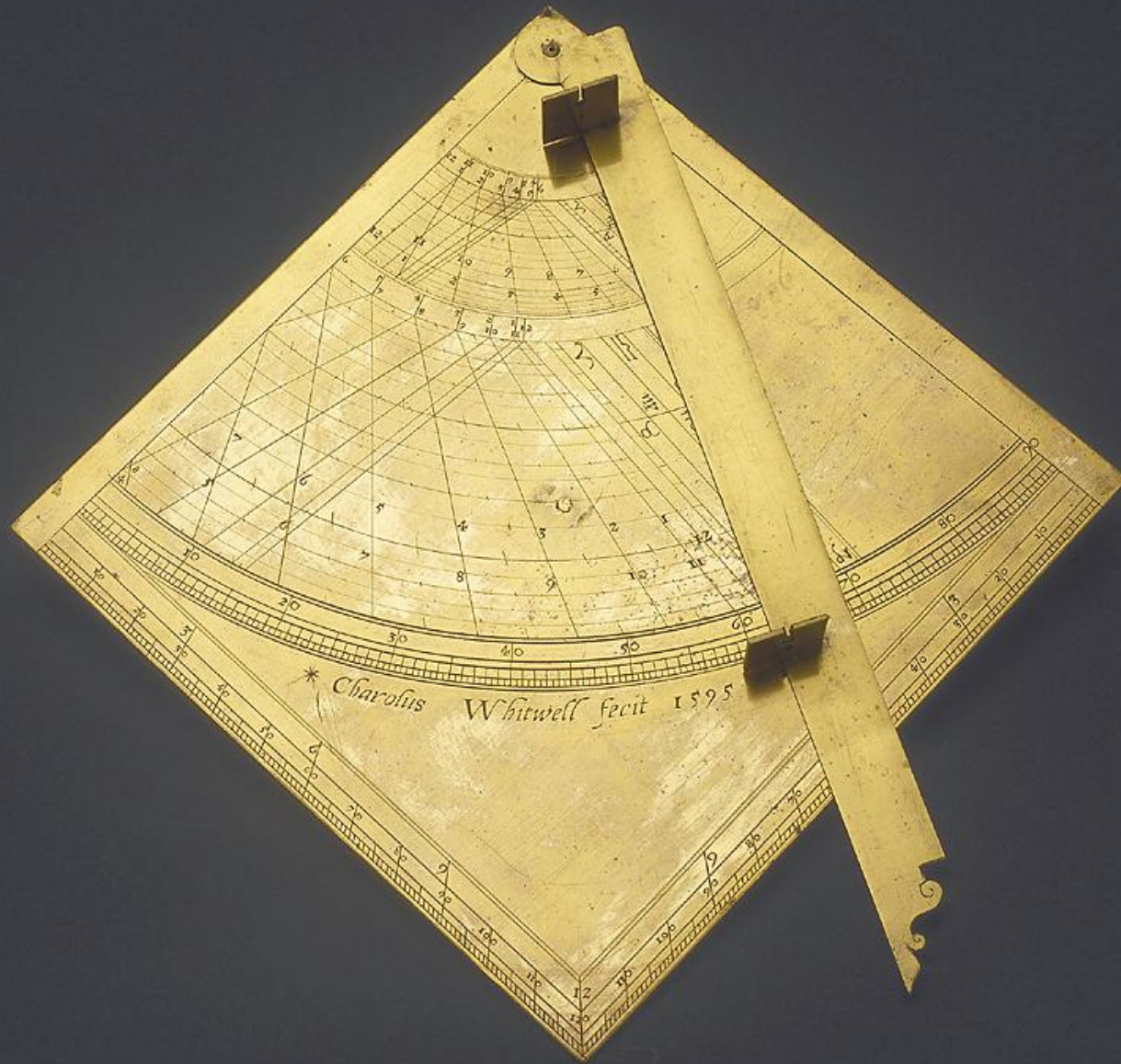


IN PADOVA.

In Casa dell'Autore, Per Pietro Marinelli. MDCVI.

Con licenza dei Superiori.





Quadrant

Signed by Charles
Whitwell

Dated 1595; English

Proportional
Instrument

Signed by
James Kynvyn

Dated 1597;
London





Astrolabe
Signed by Thomas Gemini
Mid 16th century; English



Quadrant, Signed by Thomas Gemini

Mid 16th century; English



Theodolite

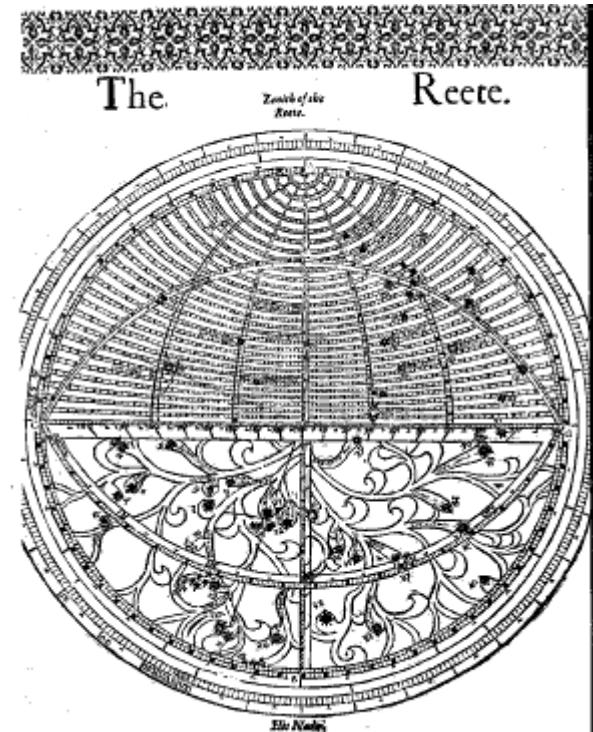
Signed by Augustine Ryther

Dated 1590; English



Astrolabe
Attributed to Charles
Whitwell [or James
Kynvyn]
Late 16th century;
English

Astrolabe
Signed by Charles Whitwell
Dated 1595; English



Nautical Hemisphere
Signed by Charles Whitwell
Late 16th century; English



Nautical Circle
Signed by Charles
Whitwell
Late 16th century;
English



**DELL'ARCANO
DEL MARE.**

DE D. AURESTO DVCELO DVCA DE NORVMBRIA,
E CONTE DI VVARVICH,
LIBRO TERZO, E QVARTO;

Nel Terzo, si contiene la Dilectissima Maximiana M. Sorella dell'Autore,
E nel Quarto, l'Architettura sua Navica di Vascelli da guerra.

AL SERENISSIMO
Ferdinando SECONDO
GRAN DVCA DI TOSCANA
suo Signore.



In FIRENZE. Nella Stamperia di Francesco Costelli. 1446.
Con licenza de' SS. Superiori.

Collegio S. Paolo



OPIC
 Sir Robert Dudley was the
 friend of the Emperor's Son 1597
 LI SOL
 15267
 1611

Quadrant, Dated 1597



