



Disappearing London

Justin Dillon

Chair, London Wildlife Trust

Gresham College, October 2, 2006

If an area of green space in London the size of twenty-two Hyde Parks were to be concreted over there would, quite rightly, be a huge public outcry. But when the lost green space in question is made up of front gardens rather than parkland, we have let this happen with barely a murmur.

Darren Johnson, chair of the London Assembly Environment Committee



House sparrow





Camley Street
Natural Park,
Camden

London's Biodiversity

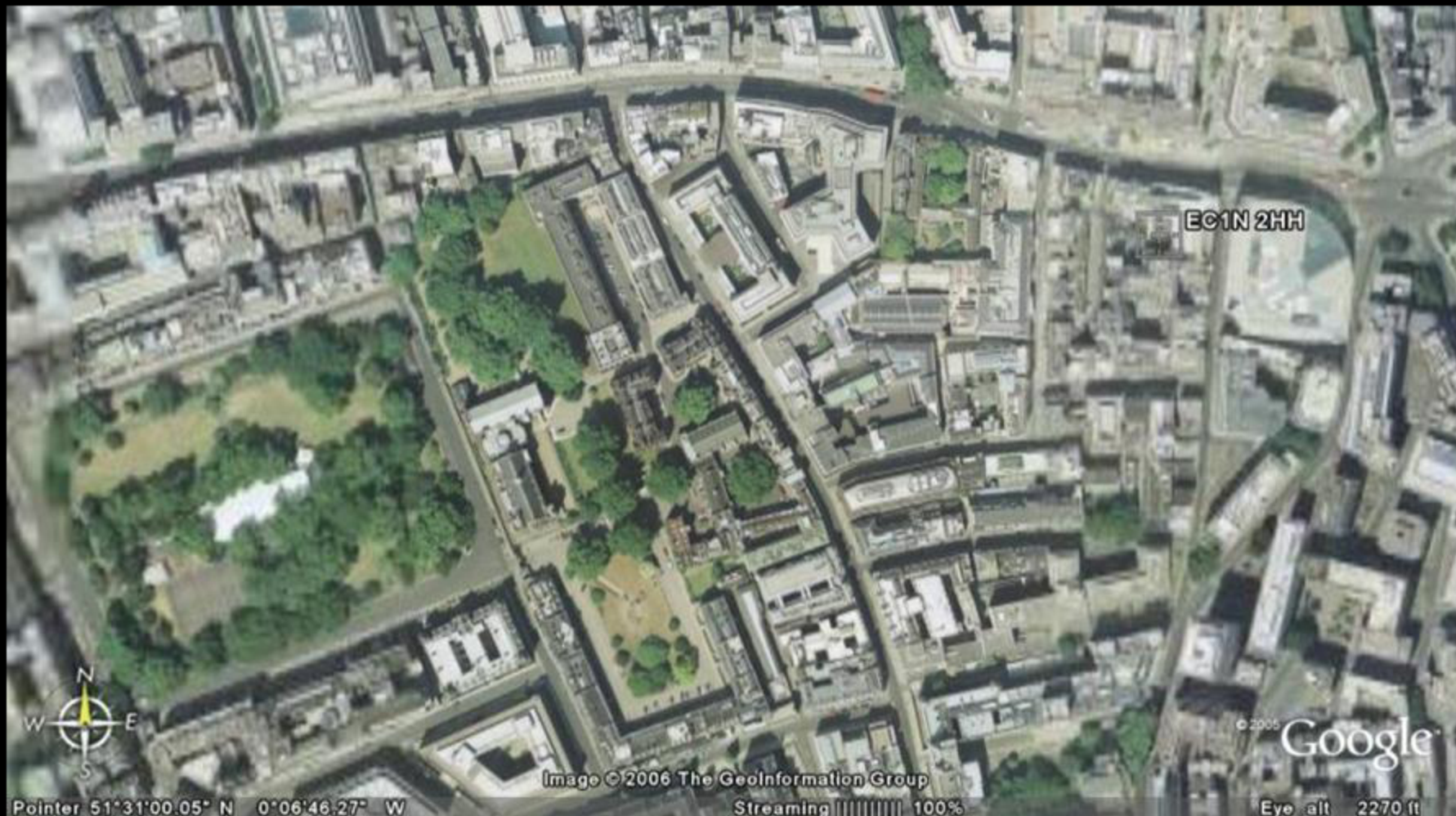
Biological diversity

The variety of life in all its forms,
levels and combinations.

London Biodiversity Partnership

Public, private and voluntary organisations including Natural England, RSPB, the Environment Agency, GLA, Corporation of London, LNHS.

London Biodiversity Action Plan



EC1N 2HH

Image © 2006 The GeoInformation Group

Streaming 100%

© 2006

Google

Eye alt 2270 ft

LBP Species Action Plans

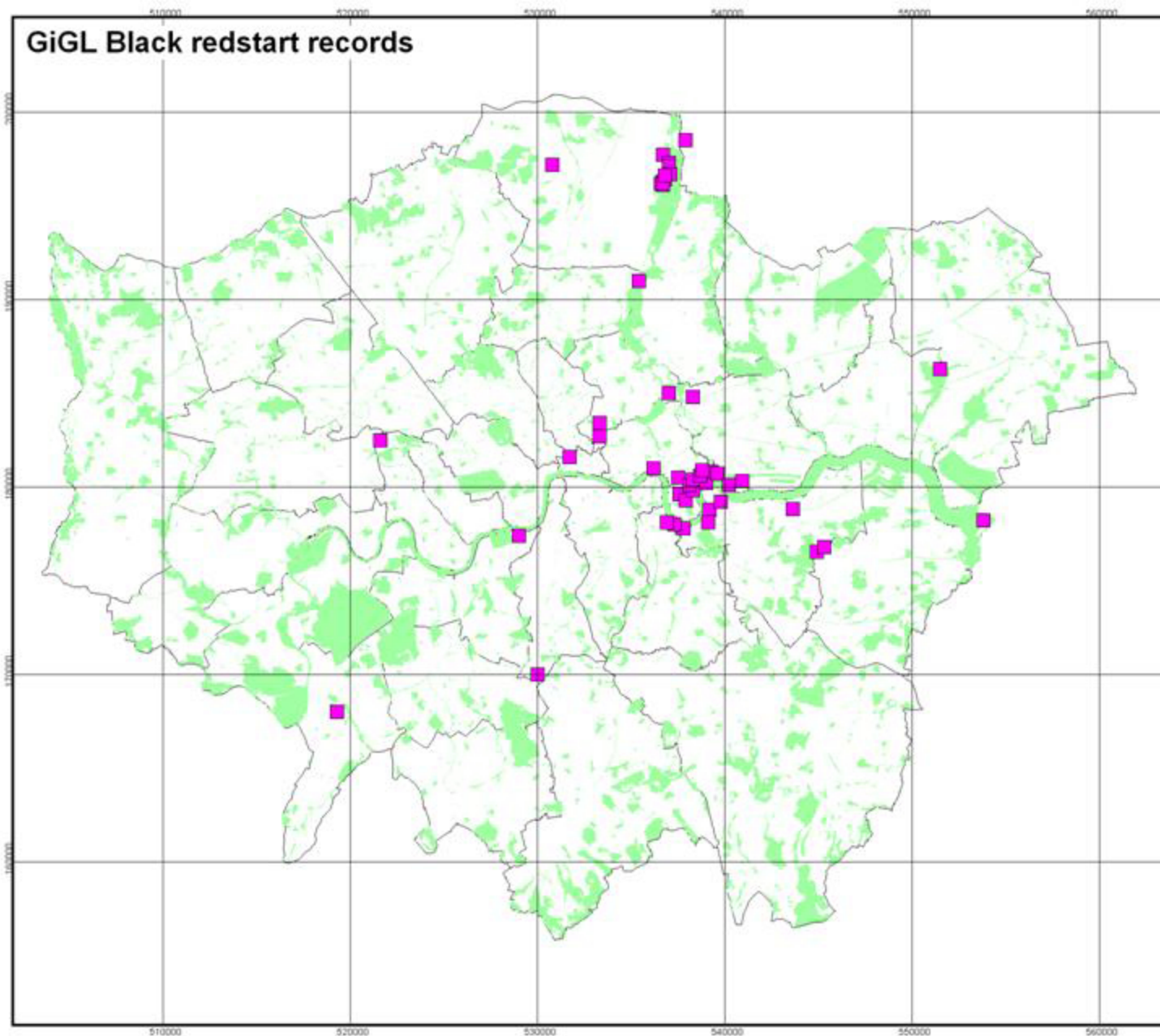
- Bats
- Water vole
- Grey heron
- Peregrine falcon
- Sand martin
- Black redstart
- House sparrow
- Stag beetle
- Tower mustard
- Mistletoe



Peregrine falcon



The black redstart



GiGL Black redstart records

15 September 2006

-  Black Redstart
-  SINC

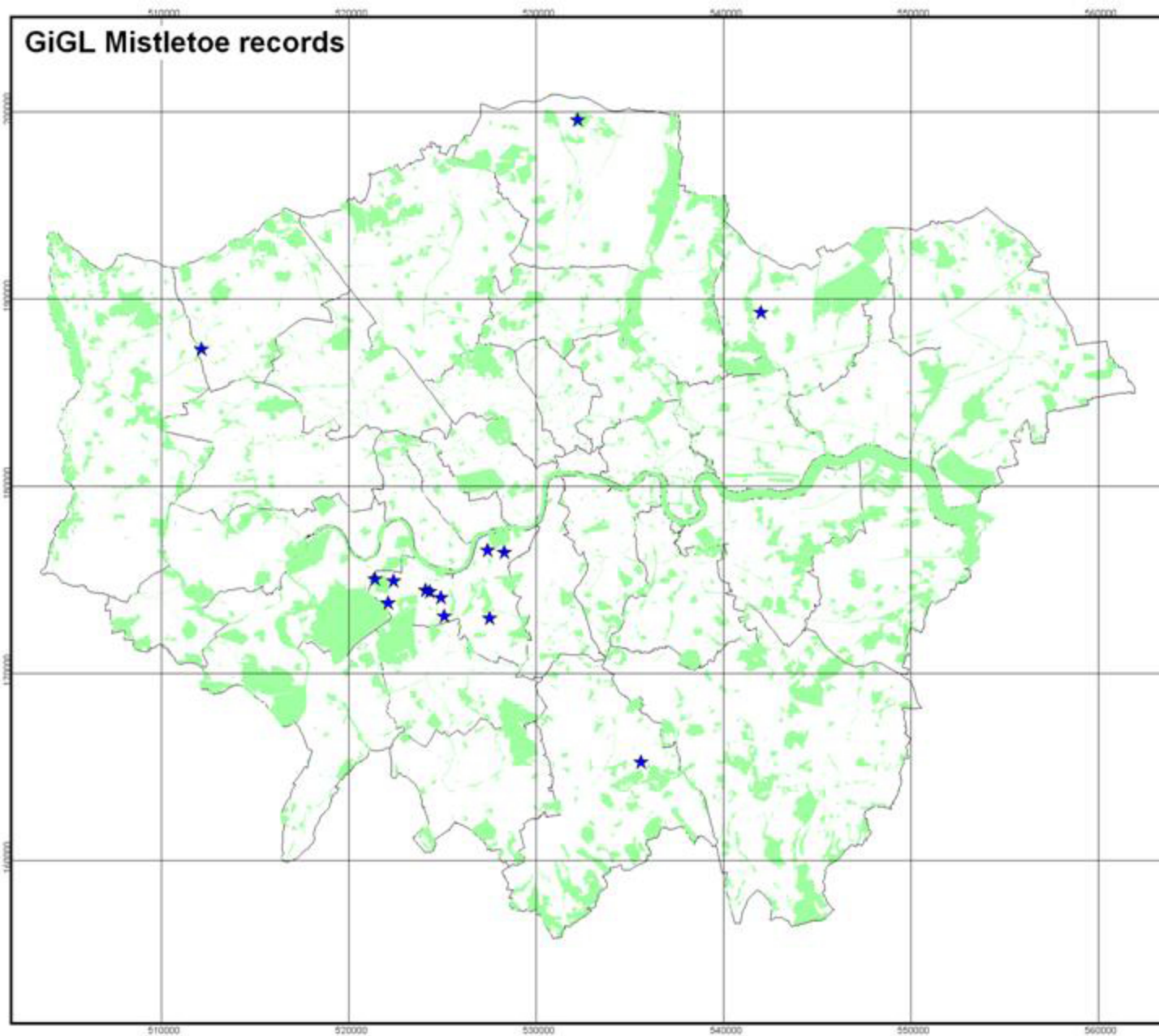
Scale 1:280000

Produced by Greenspace
Information for Greater London

Based upon the Ordnance Survey 1:10 000 map
with the permission of The Controller of Her
Majesty's Stationery Office.
© Crown Copyright. All rights reserved.
Licence No. AL100020841



Mistletoe



GiGL Mistletoe records

15 September 2006

- ★ Mistletoe
- Black Redstart Likely Key Area

**Produced by Greenspace
Information for Greater London**

Based upon the Ordnance Survey 1:10 000 map
with the permission of The Controller of Her
Majesty's Stationery Office.
© Crown Copyright. All rights reserved.
Licence No. AL100020841



Tower mustard



Buttoned snout moth



Black poplar



Haringey knotweed

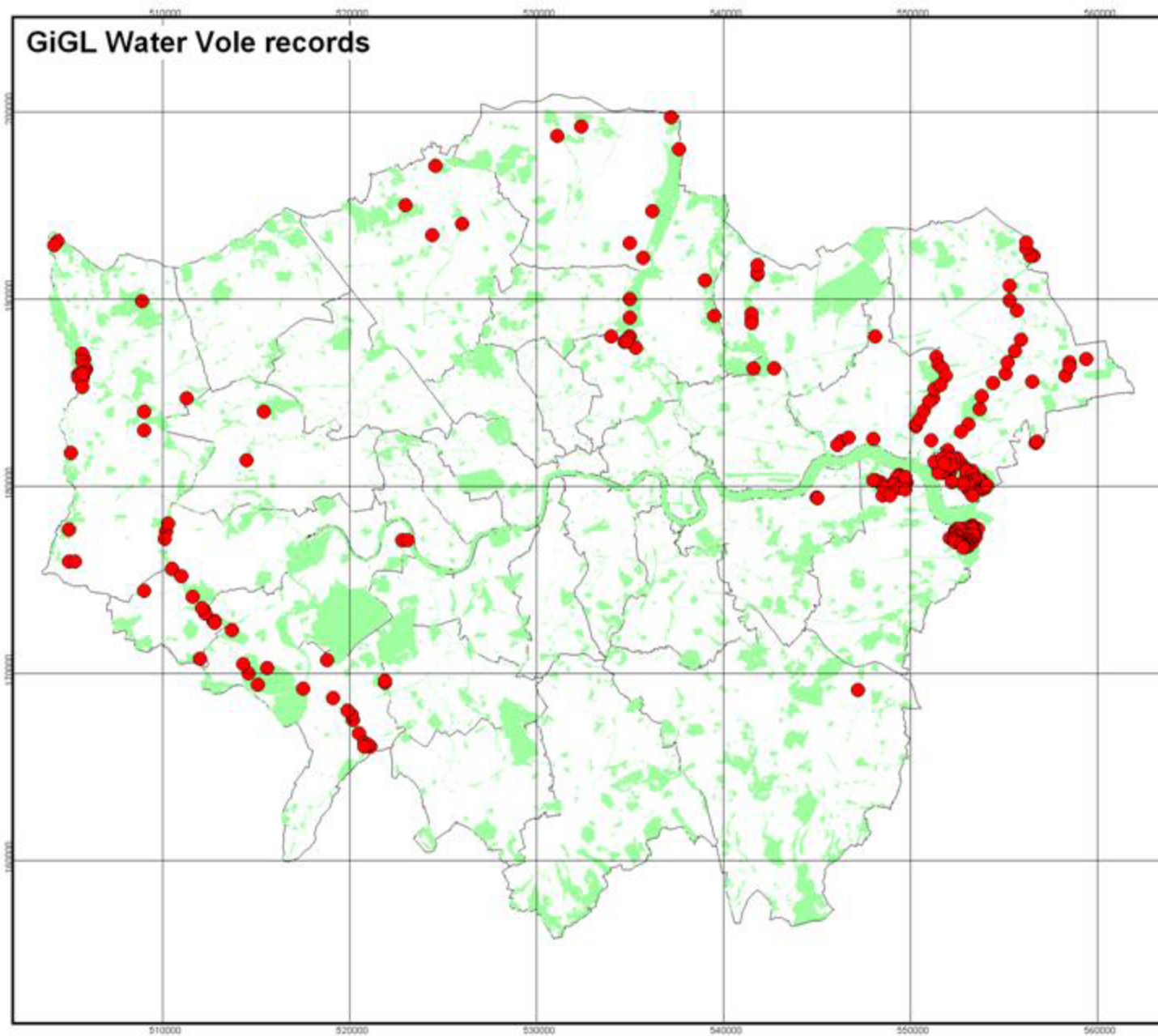


False London
rocket



Native v non-native species





GiGL Water Vole records

15 September 2006

● Water vole

■ SINC

Scale 1:280000

Produced by Greenspace
Information for Greater London

Based upon the Ordnance Survey 1:10 000 map
with the permission of The Controller of Her
Majesty's Stationery Office.
© Crown Copyright. All rights reserved.
Licence No. AL100020841



Whale spotted in central London



Wild otter found in central London

Wild otter found in central London

Although the young male, measuring 122cm and weighing 9.7kg, had been found dead on The Highway, in Wapping, on Friday, 22 September, its discovery signals the welcome return of one of Britain's most famous mammals to the capital.

Environment Agency press release, 29 Sept.



The Thames - a success story



Pointer 51°30'30.53" N 0°06'16.43" W

Image © 2006 The GeoInformation Group

Streaming 100%

© 2005 Google

Eye alt 1473 ft



Image © 2006 The GeoInformation Group

Pointer 51°30'30.53" N 0°06'16.43" W

Streaming ||||| 100%

© 2006 Google

Eye alt 135 ft

More success stories

- Hampstead Heath
- Fairlop Plain





Green roofs

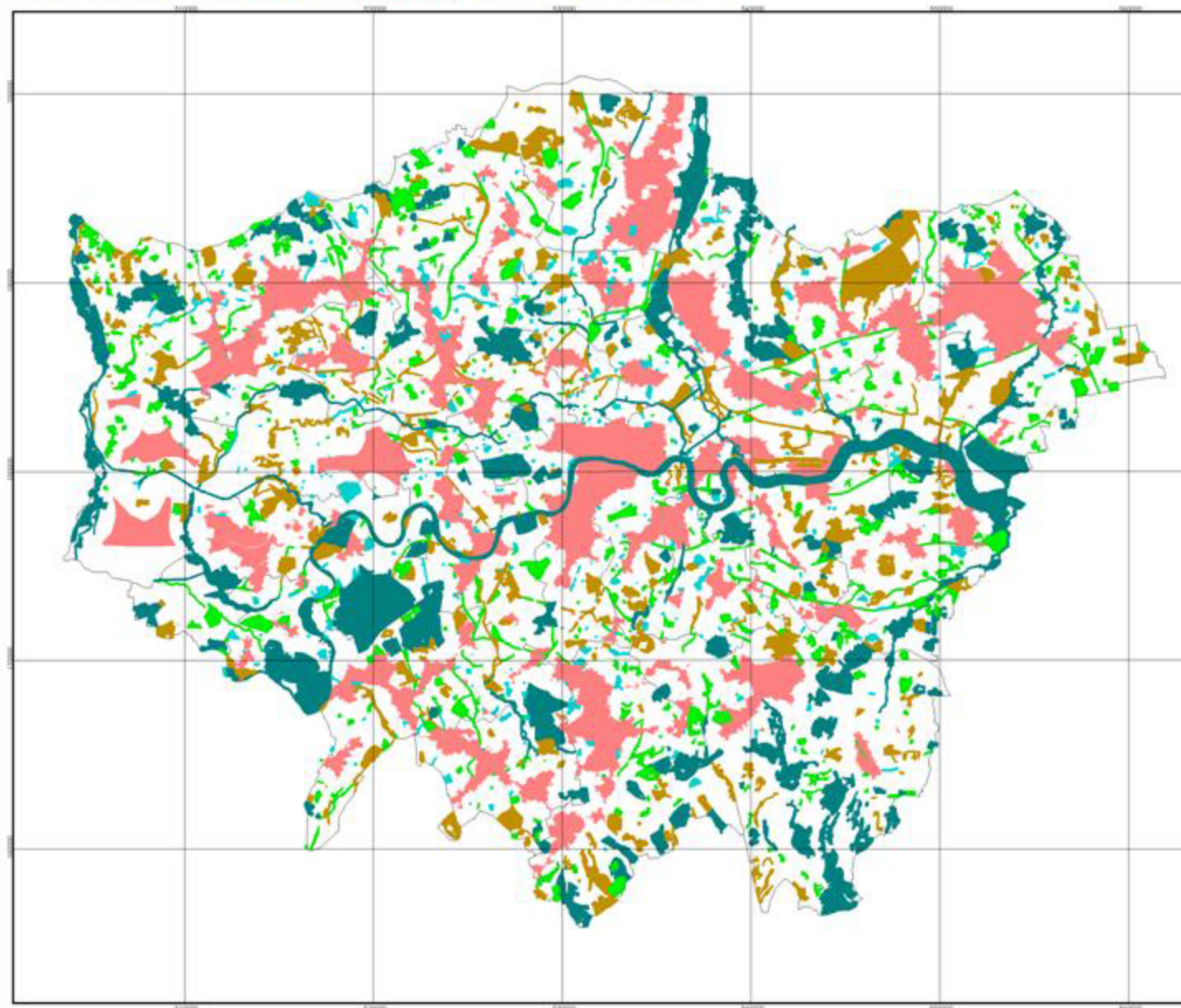
Sites of Importance for Nature Conservation (SINCs)

| | 2001 | 2003 | 2005 |
|-----------------|--------|--------|--------|
| Borough Grade 1 | 7,349 | 7,644 | 7,379 |
| Borough Grade 2 | 4,160 | 4,704 | 4,847 |
| Local | 1,677 | 1,819 | 1,789 |
| Metropolitan | 15,356 | 15,678 | 15,627 |
| Grand total | 28,532 | 29,845 | 29,642 |

(all figures are hectares)

Data from Greenspace Information for Greater London

GREATER LONDON AUTHORITY Sites of Importance for Nature Conservation



Greater London

15 September 2006

- Area of Deficiency
- Site of Metropolitan Importance
- Site of Borough Importance Grade 1
- Site of Borough Importance Grade 2
- Site of Local Importance
- Borough Boundaries

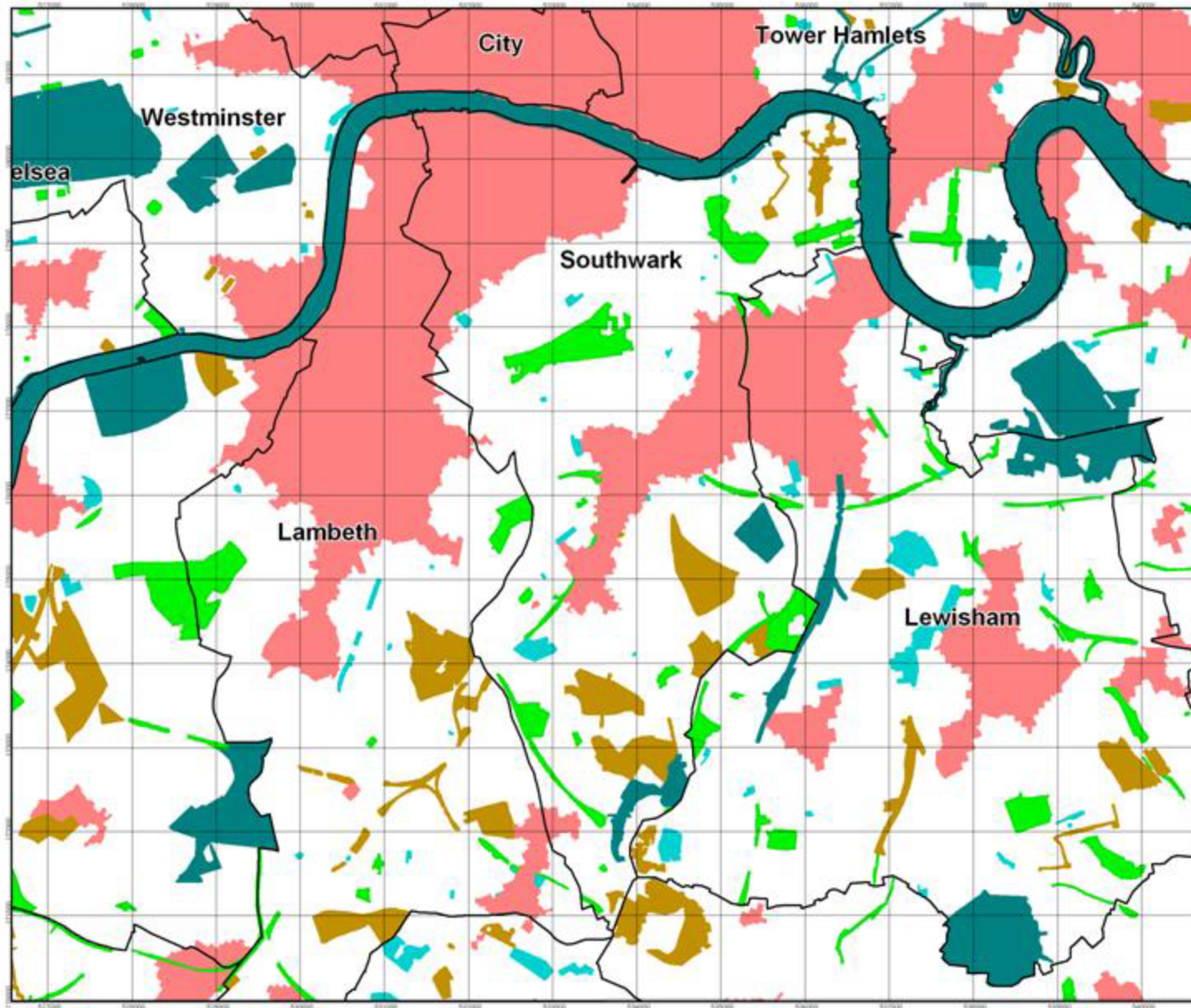
Scale 1:200000

The Sites of Importance for Nature Conservation have been identified since 1986 using procedures which have now been adopted by the Mayor of London. They are recommended for protection in planning. The boundaries and site grades reflect the most recent consideration of each site, details of which are available from the Trust and the Greater London Authority. Note that boundaries and grades may change as new information becomes available.

**Produced by Greenspace
Information for Greater London**

Based upon the Ordnance Survey 1:10 000 map with the permission of The Controller of Her Majesty's Stationary Office.
© Crown Copyright. All rights reserved.
Licence No. AL100020041

GREATER LONDON AUTHORITY Sites of Importance for Nature Conservation



Southwark

15 September 2006

- Area of Deficiency
- Site of Metropolitan Importance
- Site of Borough Importance Grade 1
- Site of Borough Importance Grade 2
- Site of Local Importance
- Borough Boundaries

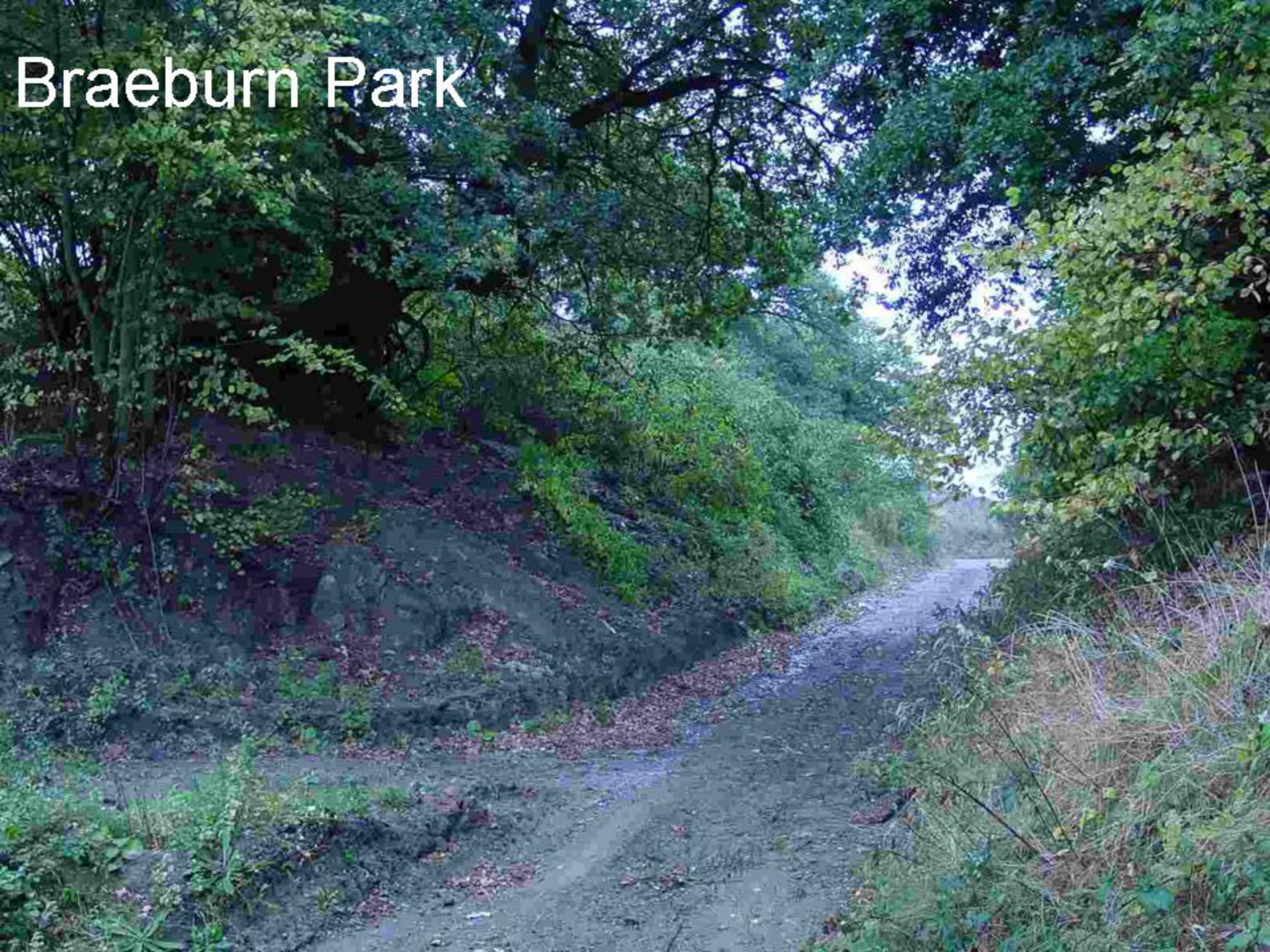
Scale 1:45000

The Sites of Importance for Nature Conservation have been identified since 1986 using procedures which have now been adopted by the Mayor of London. They are recommended for protection in planning. The boundaries and site grades reflect the most recent consideration of each site, details of which are available from the Trust and the Greater London Authority. Note that boundaries and grades may change as new information becomes available.

**Produced by Greenspace
Information for Greater London**

Based upon the Ordnance Survey 1:10 000 map with the permission of The Controller of Her Majesty's Stationary Office
© Crown Copyright. All rights reserved.
Licence No. AL 100020841

Braeburn Park





Battersea Power Station



The Olympic legacy



FEARS FOR THE FUTURE OF THE THAMES GATEWAY

London Wildlife Trust is extremely concerned that regeneration in the Thames Gateway is being carried out without the necessary environmental sensitivity.

LWT press release, February 3, 2005

Last month Bexley Council gave Tilfen Land Ltd outline planning permission for all three stages of the £80 million East Thamesmead Business Park development on a large section of Erith Marshes in South East London, (ancient grazing marsh) despite the fact the Government has identified grazing marsh as a habitat of national priority for nature conservation.



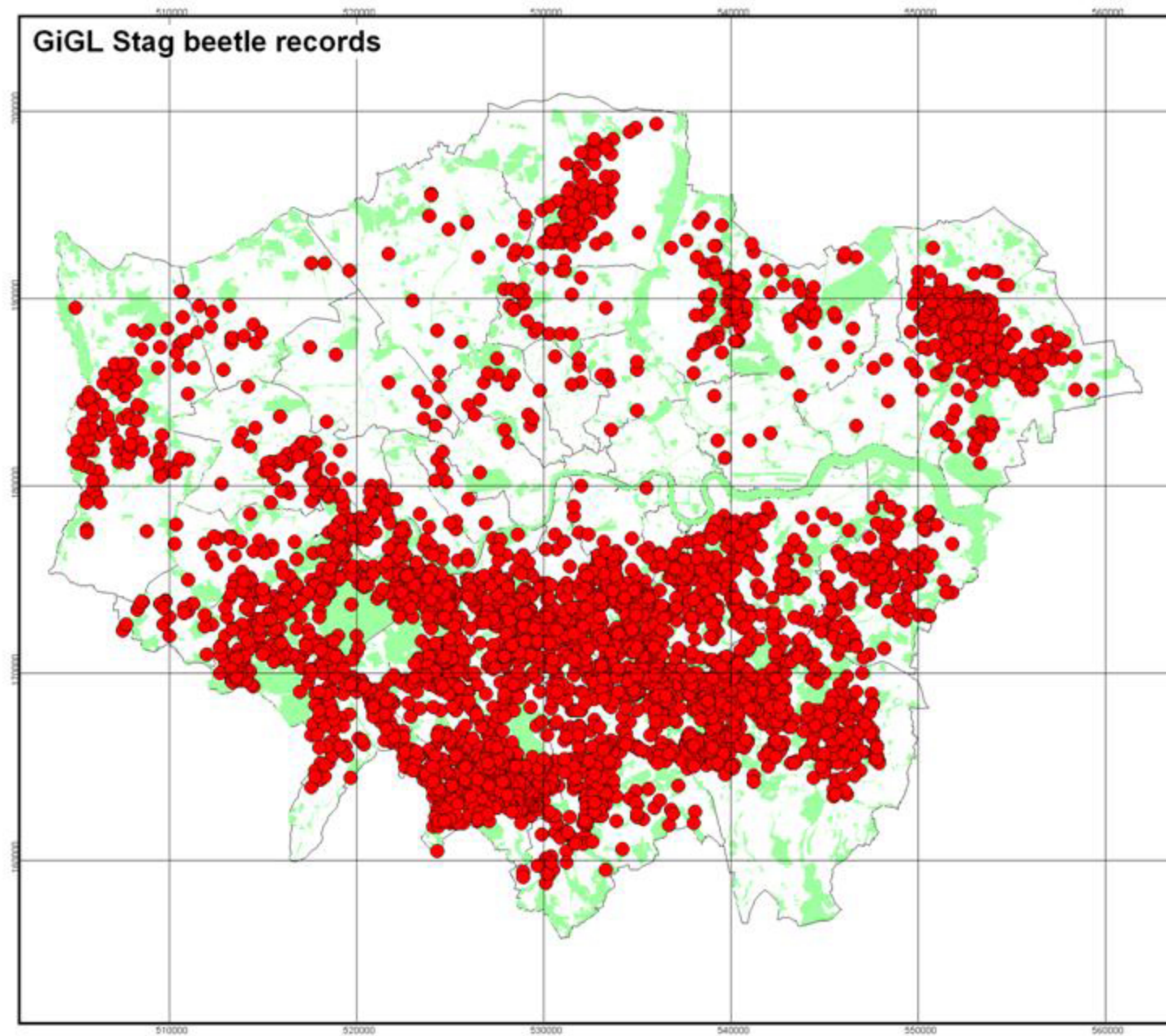


Poplar logs, Southfields



Stag beetle

GiGL Stag beetle records



GiGL Stag beetle records

15 September 2006

● Stag beetle

■ SINC

Scale 1:280000

Produced by Greenspace
Information for Greater London

Based upon the Ordnance Survey 1:10 000 map
with the permission of The Controller of Her
Majesty's Stationery Office.
© Crown Copyright. All rights reserved.
Licence No. AL100020841



LONDON

wildlife

TRUST

Why is London disappearing?

- local planning authorities are failing to accord sufficient protection to important wildlife habitats in their Unitary Development Plans
- local planning authorities are still failing to comply with planning policy and legislation as set out in PPS9, PPG17, the Wildlife & Countryside Act (1981, as amended), Countryside & Rights of Way Act (2000), and European law;

Why is London disappearing?

- developers regularly ignore guidance and legislation, or apply minimal compliance;
- local planning authorities are failing to require and/or enforce measures to protect and conserve biodiversity as conditions of new developments;
- the police are failing to enforce breaches of biodiversity conservation law (usually because they are not aware of legislation or they're inadequately resourced)



What can you do?

Wildlife gardening

- Don't concrete over your front garden!
- Replace fencing with hedge
- Choose plants and trees that don't require too much water
- A green roof for the shed?
- Window boxes and indoor plants

What can you do?

- Volunteer
- Support voluntary organisations
- Support politicians who you can trust to make sound environmental decisions
- Reduce, reuse, recycle.

Acknowledgements

Matt Davies, GIGL

Mathew Frith, LWT

Penny Frith

Iain Green

Catherine Harris, LWT

Mandy Rudd, LWT

Mark Simpson, LWT

Charlotte Williams