











THE SOUTHEAST VIEW OF GODRICH CASTLE, IN THE COUNTY OF HEREFORD.



From a drawing by HENRY Dole Marquet, Esq. of Godrich Castle, in the County of Hereford, and a plan by the same Gentleman, of the Castle of Godrich, in the County of Hereford, in the Year 1744. The Castle was built by the King of the Romans, and was the Residence of the Bishops of Hereford, till the Year 1540, when it was sold to the Duke of Beaufort, who was the first Duke of Somerset.



EDWARD G. D'ALMEIDA, Esq. of Godrich Castle, in the County of Hereford, has the Honour to acquaint the Public, that he has the Pleasure to possess the Engraving of the Castle of Godrich, in the County of Hereford, which was designed by the late Mr. Henry Dole Marquet, Esq. of Godrich Castle, in the Year 1744. The Engraving is now ready to be printed, and will be sold at the Price of 10s. 6d. per Copy, in the Year 1744. The Engraving is now ready to be printed, and will be sold at the Price of 10s. 6d. per Copy, in the Year 1744.



J. J. Smith del.

J. J. Smith sc.

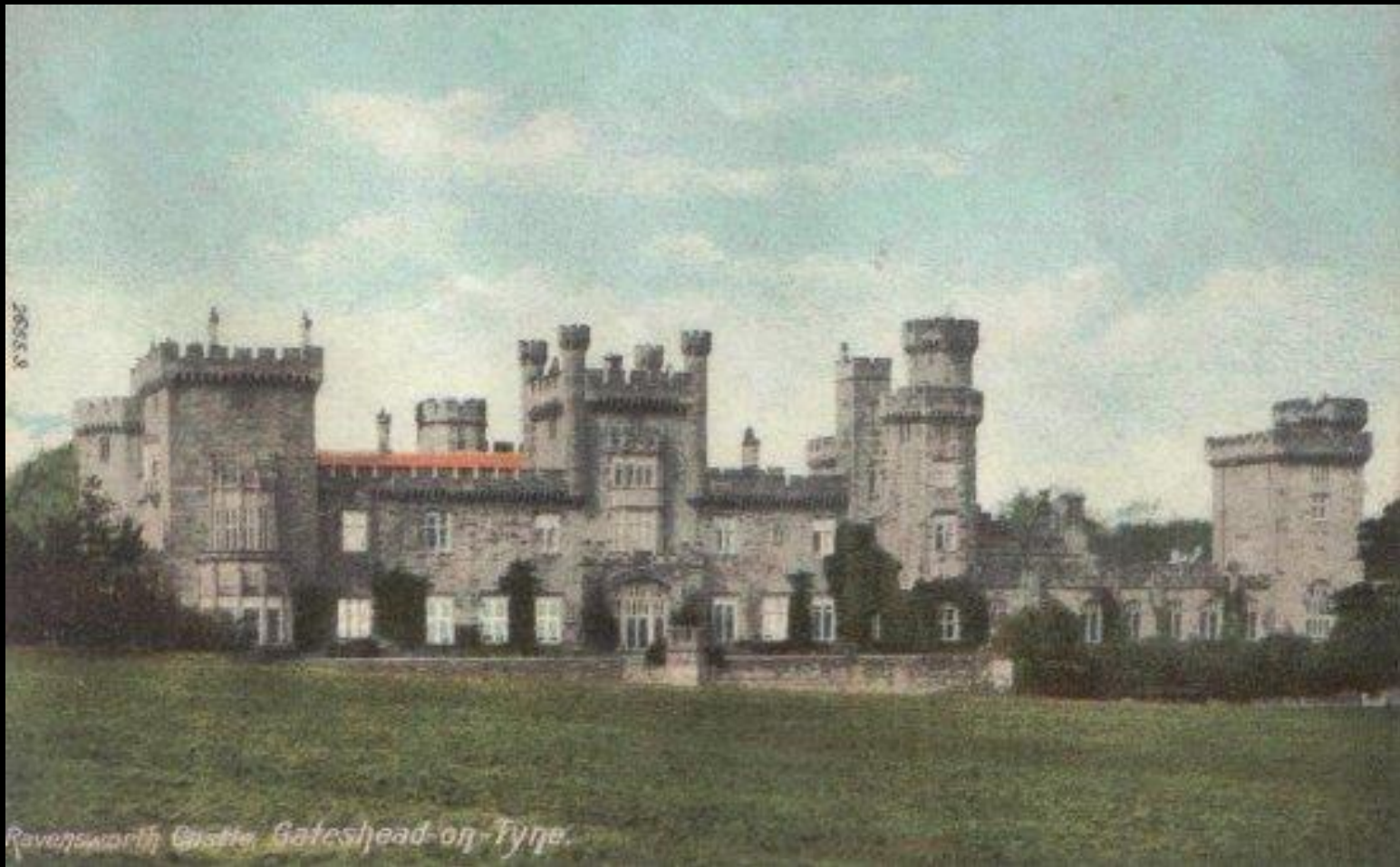


VIEW OF THE WEST, & NORTH FRONTS

W. P. N. P.







2605 9

Ravensworth Castle, Gateshead-on-Tyne.







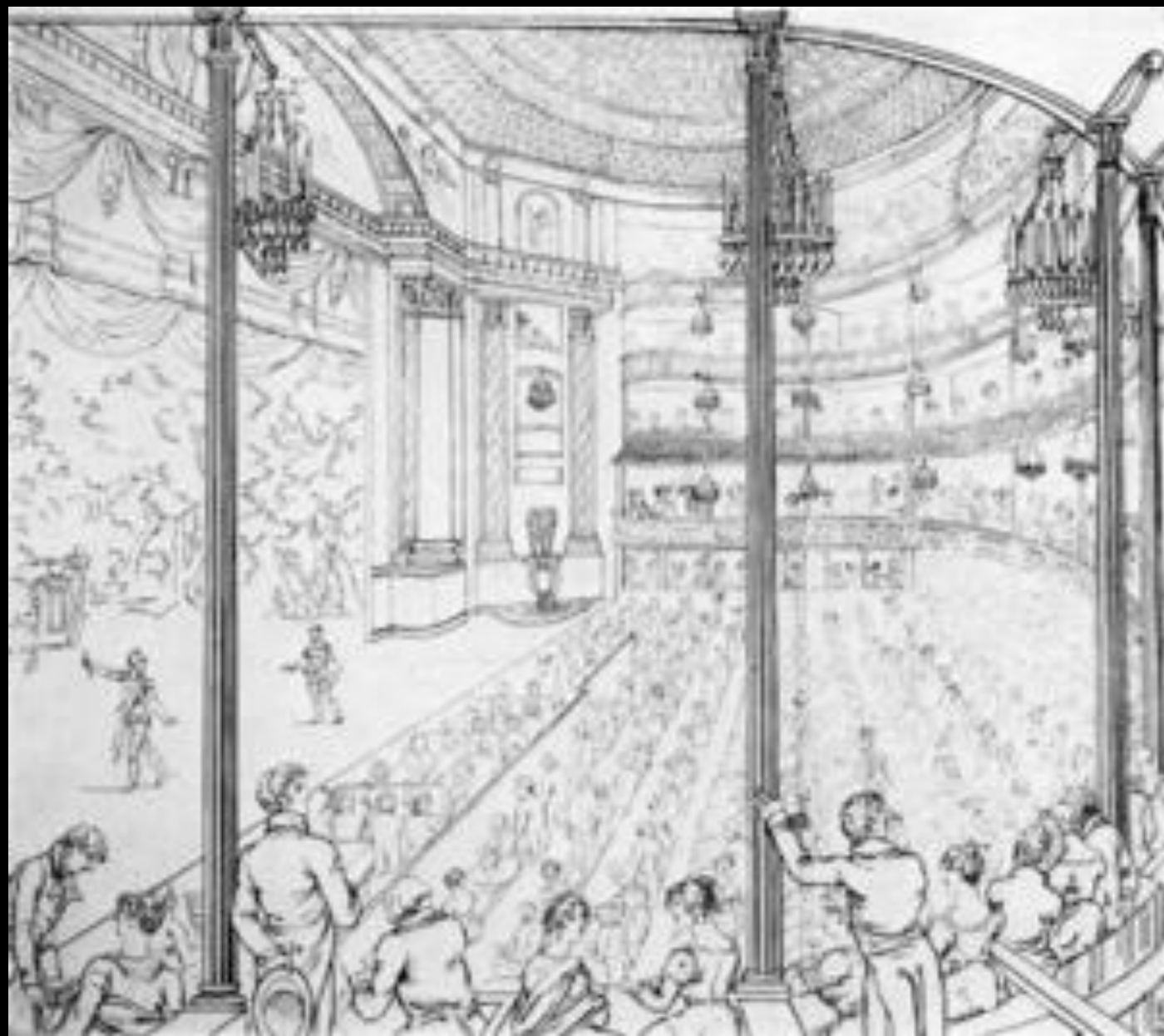


Engraved by Wallis, from a Drawing by J. Elsholtz.

By the Designer of England & Wales.

Interior of
THE HOUSE OF COMMONS.







1st-art-gallery
This watermark does not appear on the original image









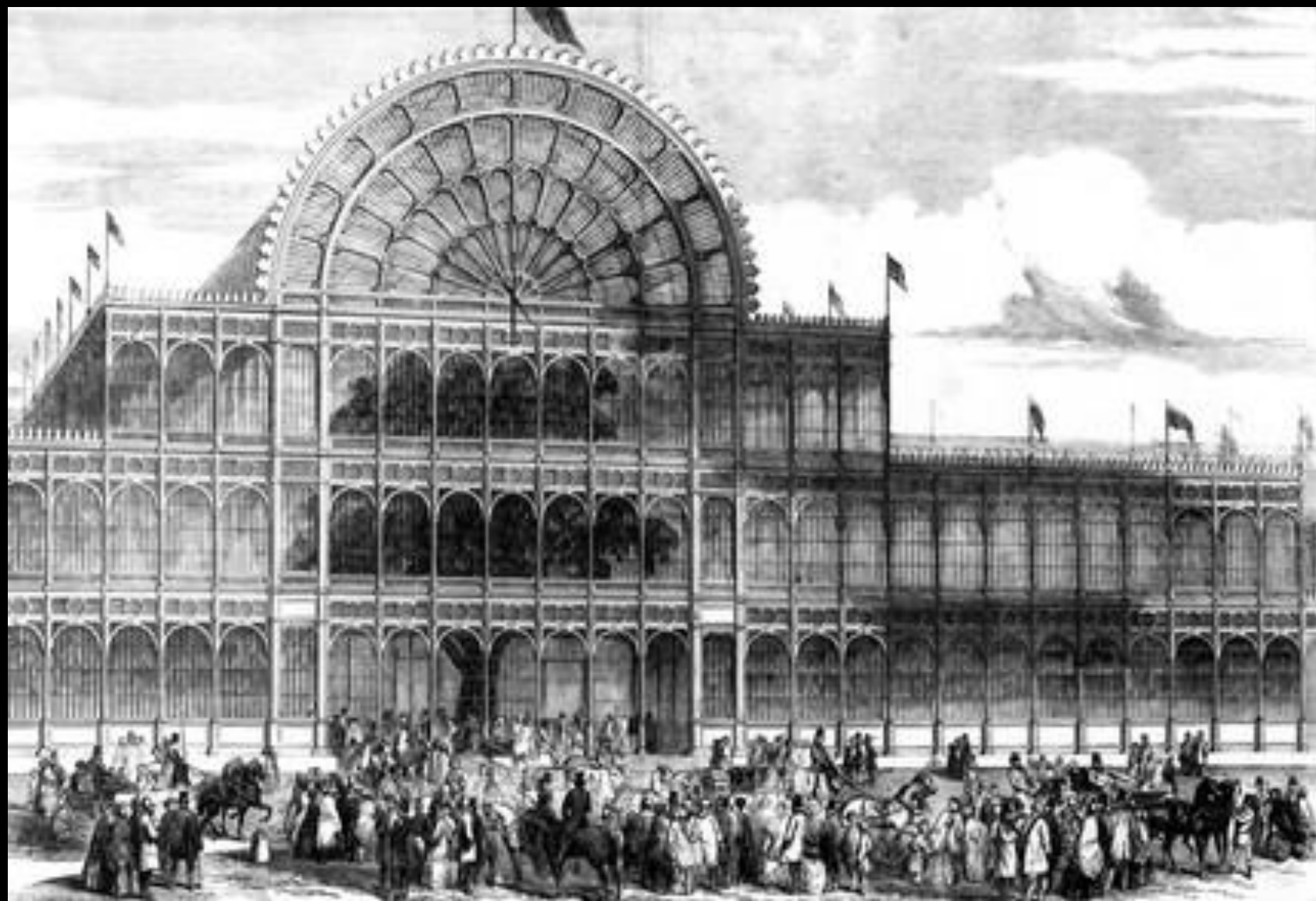




























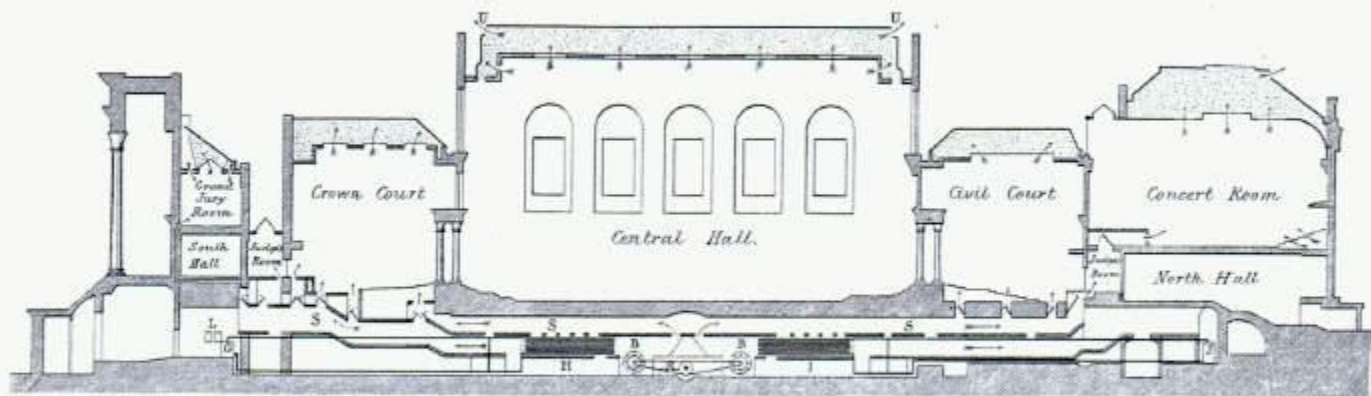








Fig 1. Longitudinal Section of St. George's Hall, Liverpool.



Scale $\frac{1}{800}^{\text{th}}$.

100 50 0 100 200 300 400 Feet.

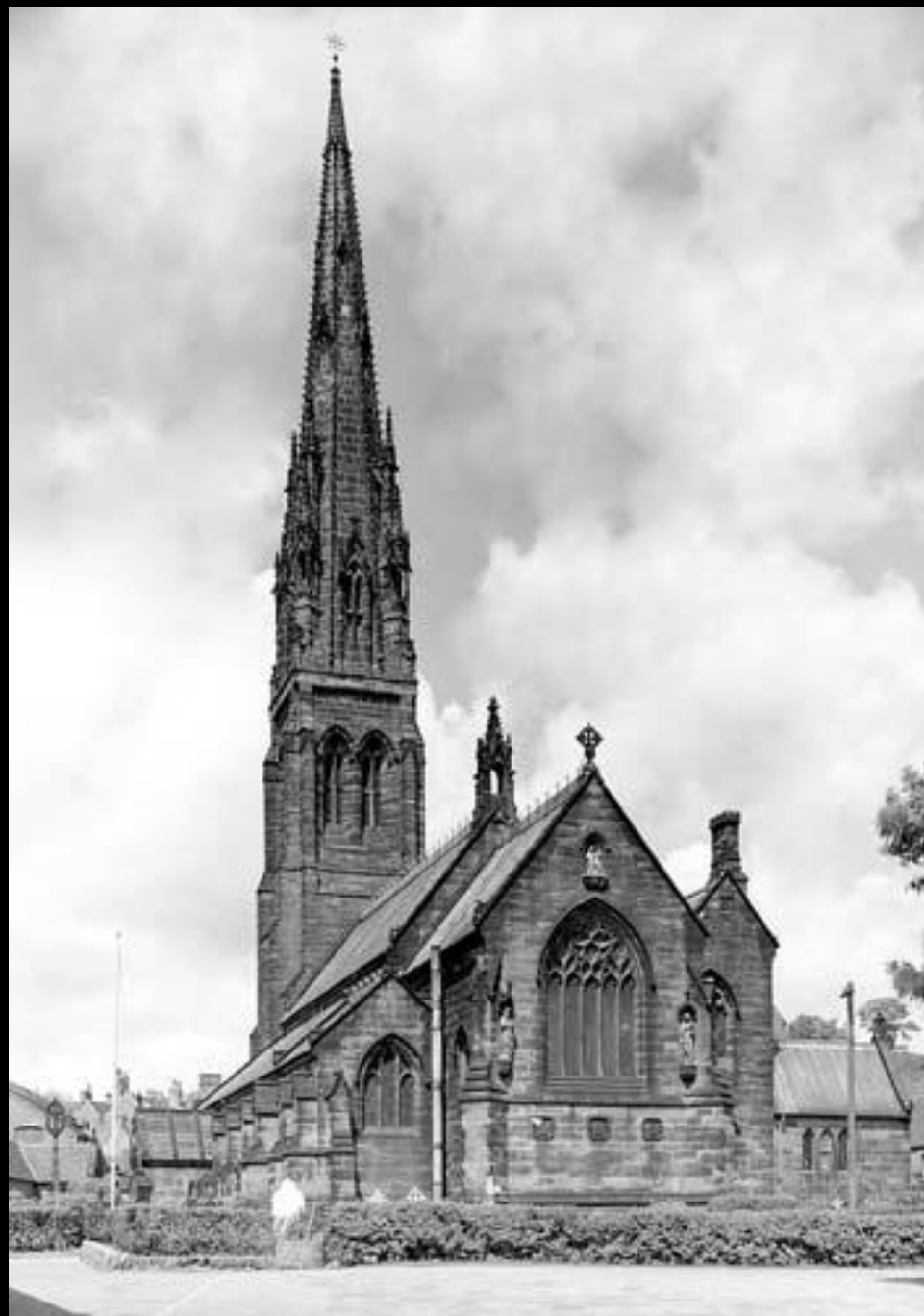
(Proceedings Inst. M.E. 1863. Page 194.)





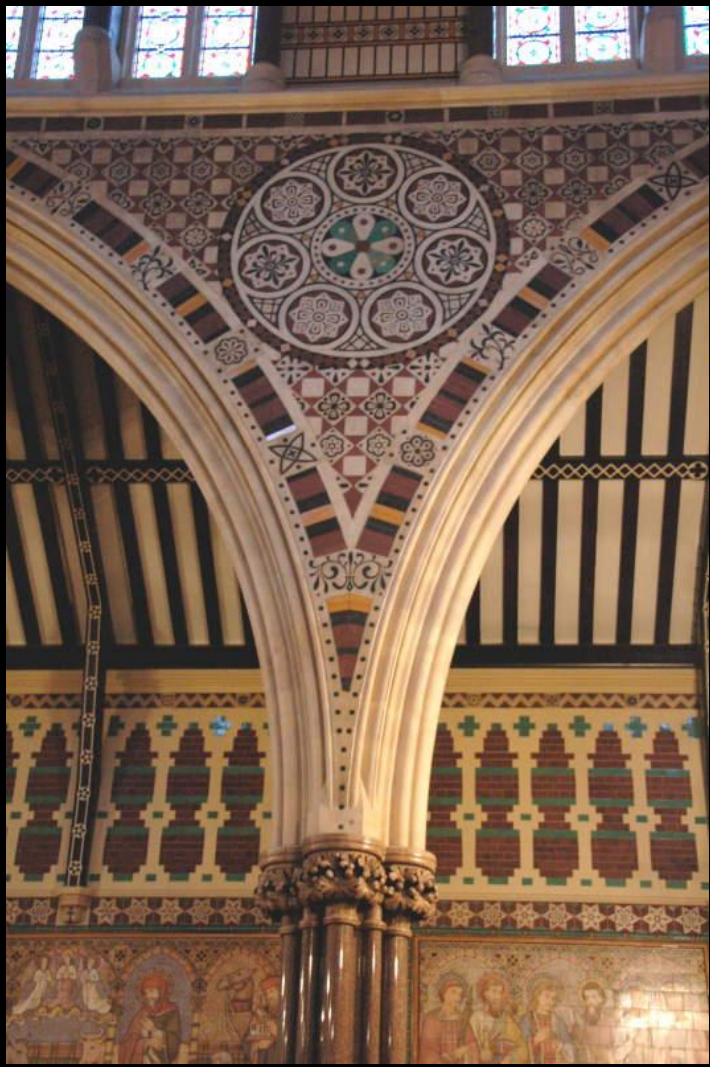
VIEW OF THE WEST, & NORTH FRONTS

W. P. N. P.







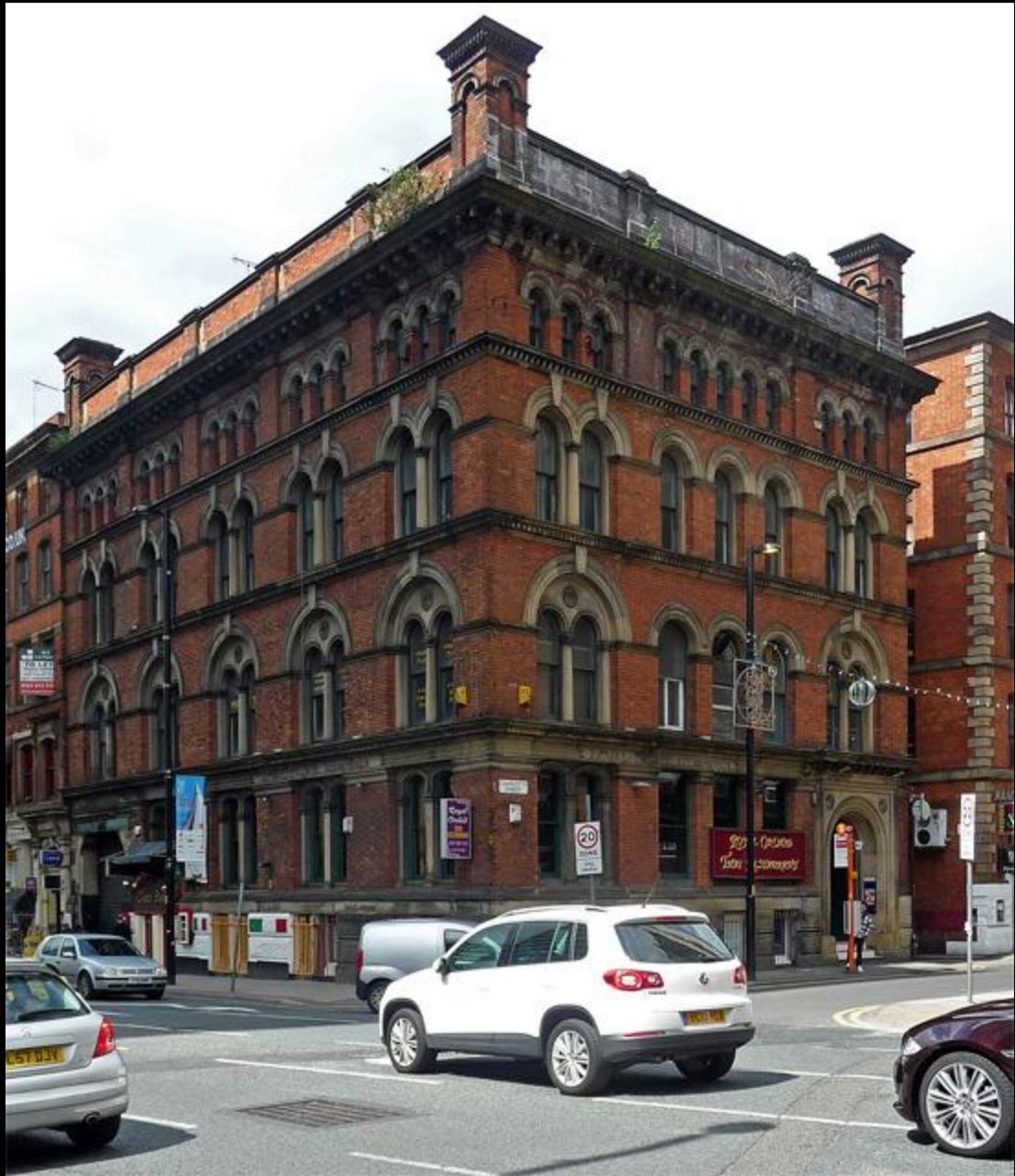




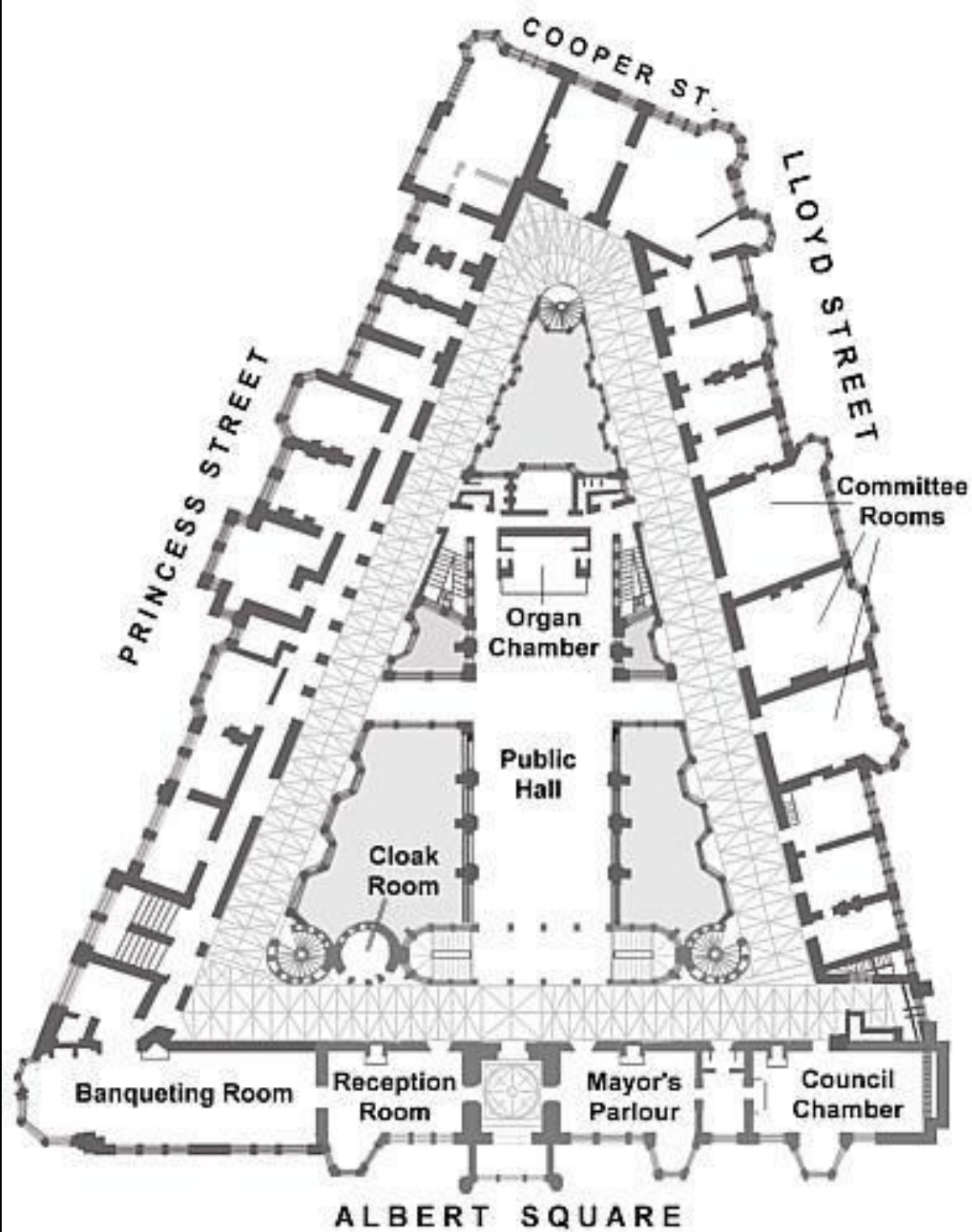
















© Darby Sawchuk / dsphotographic.com







