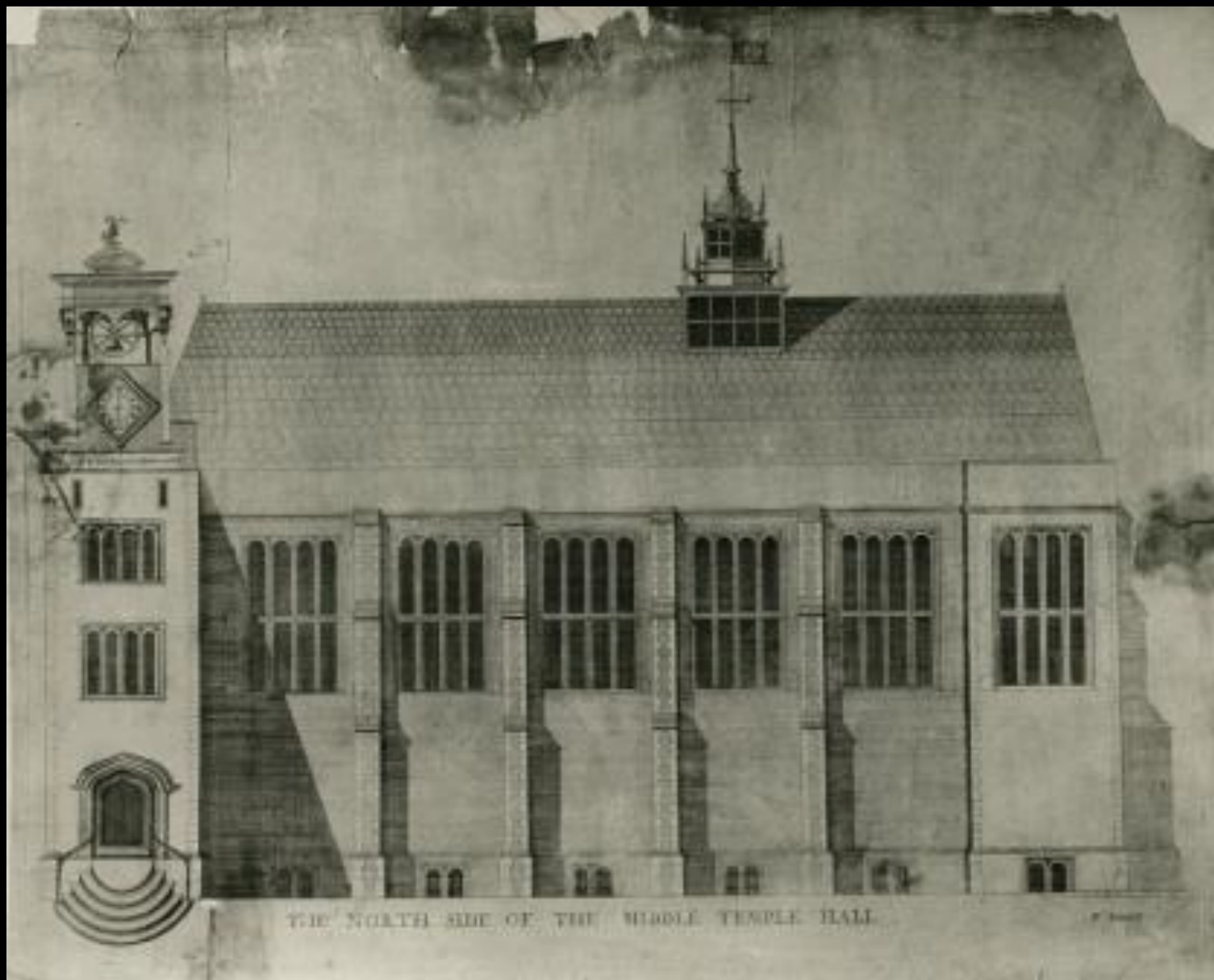


Set Square and Stethoscope  
The Royal College of  
Physicians



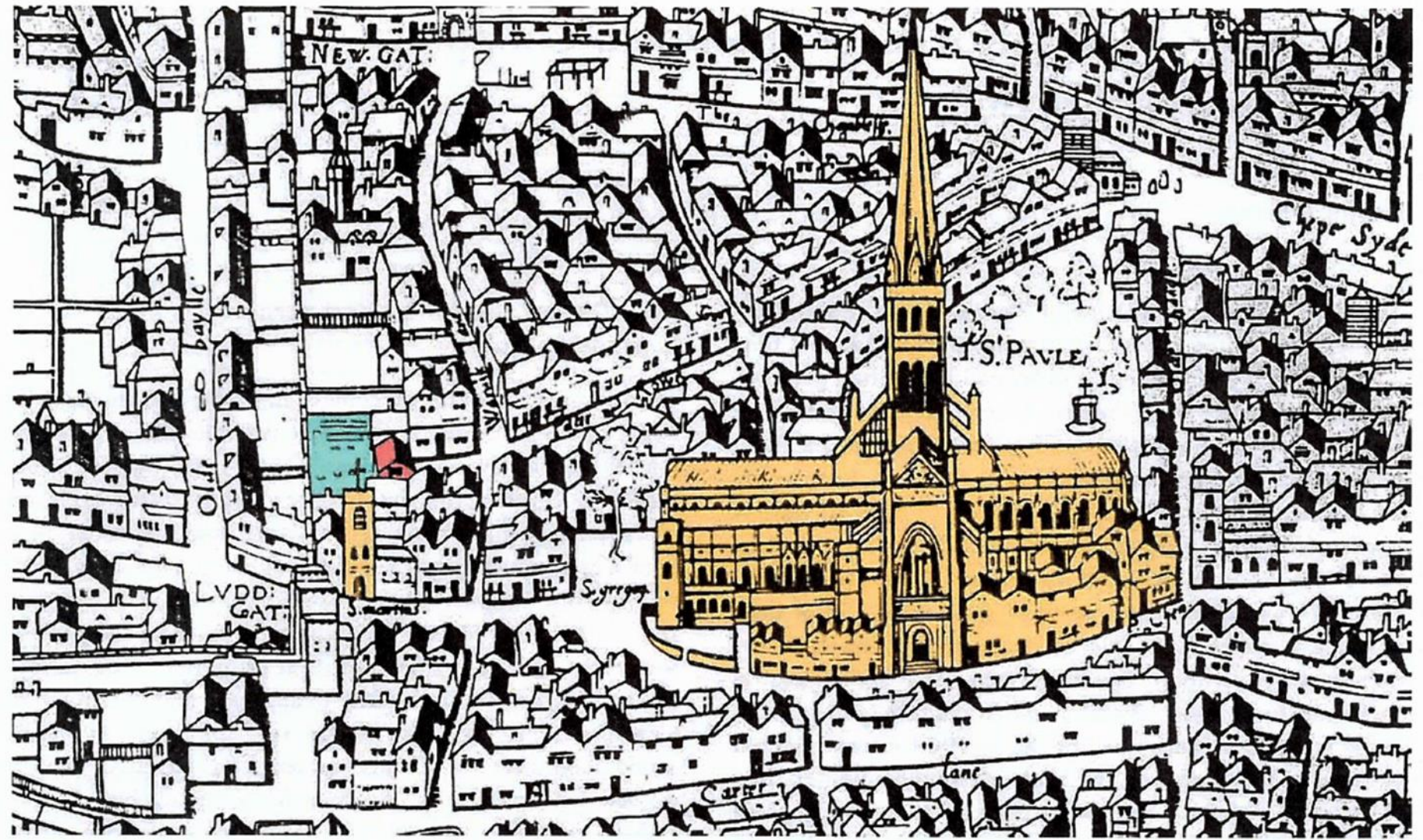


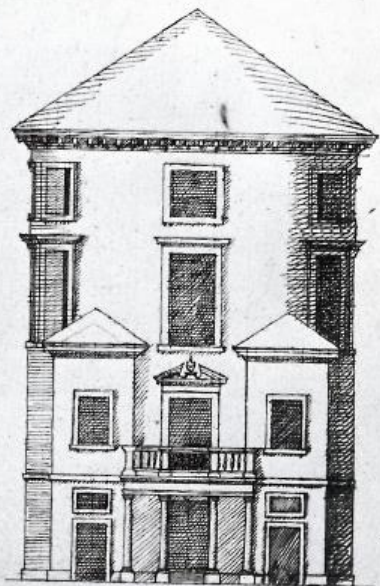
THE NORTH SIDE OF THE MIDDLE TEMPLE HALL.

J. Smith

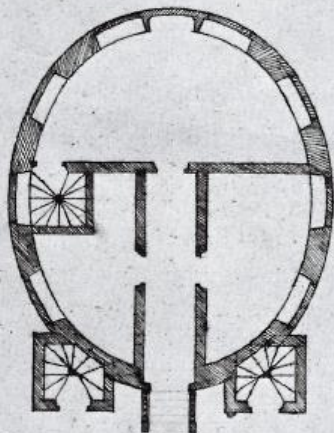


Thomas Linacre



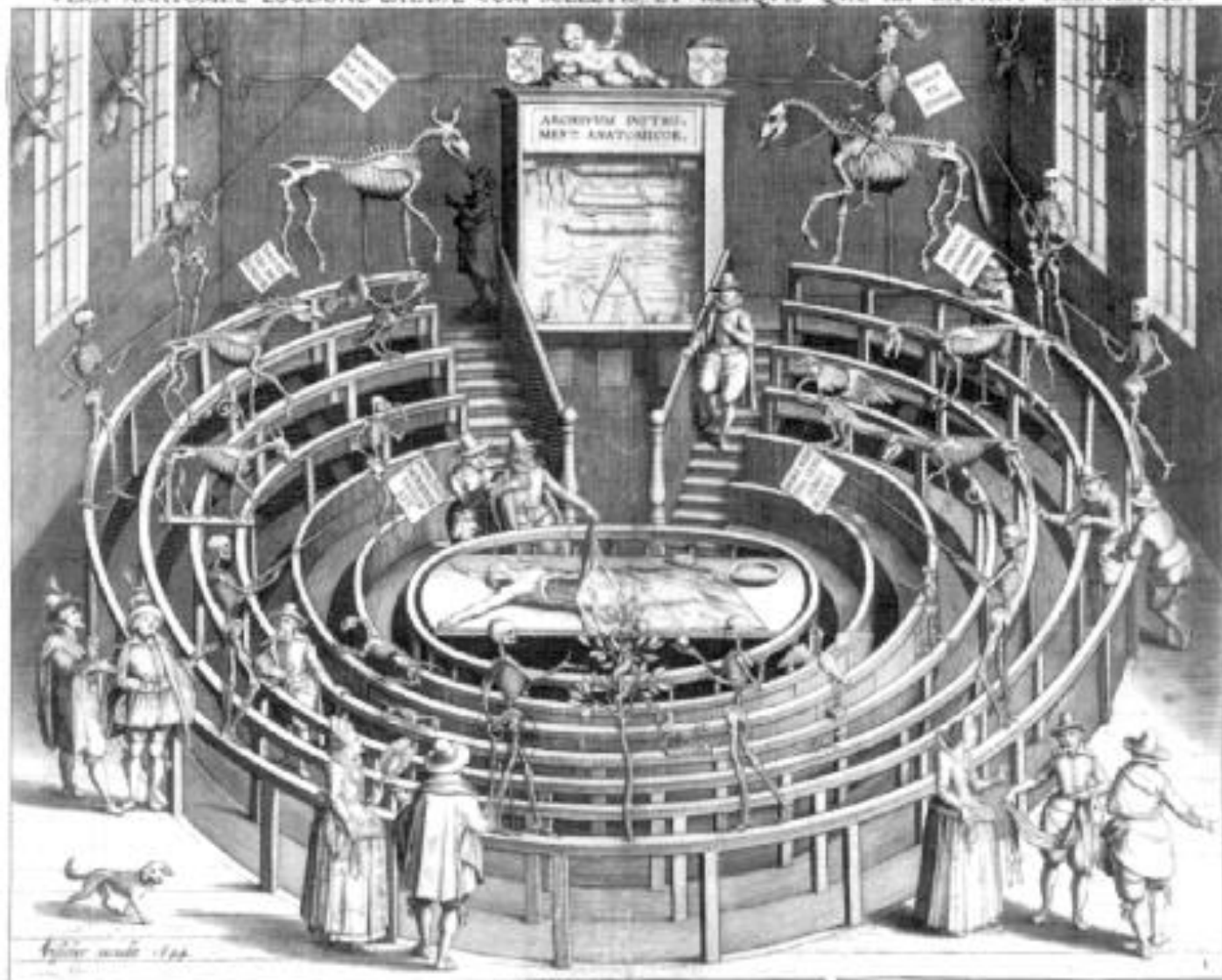


*The Design of a Changing Theatre*  
1691

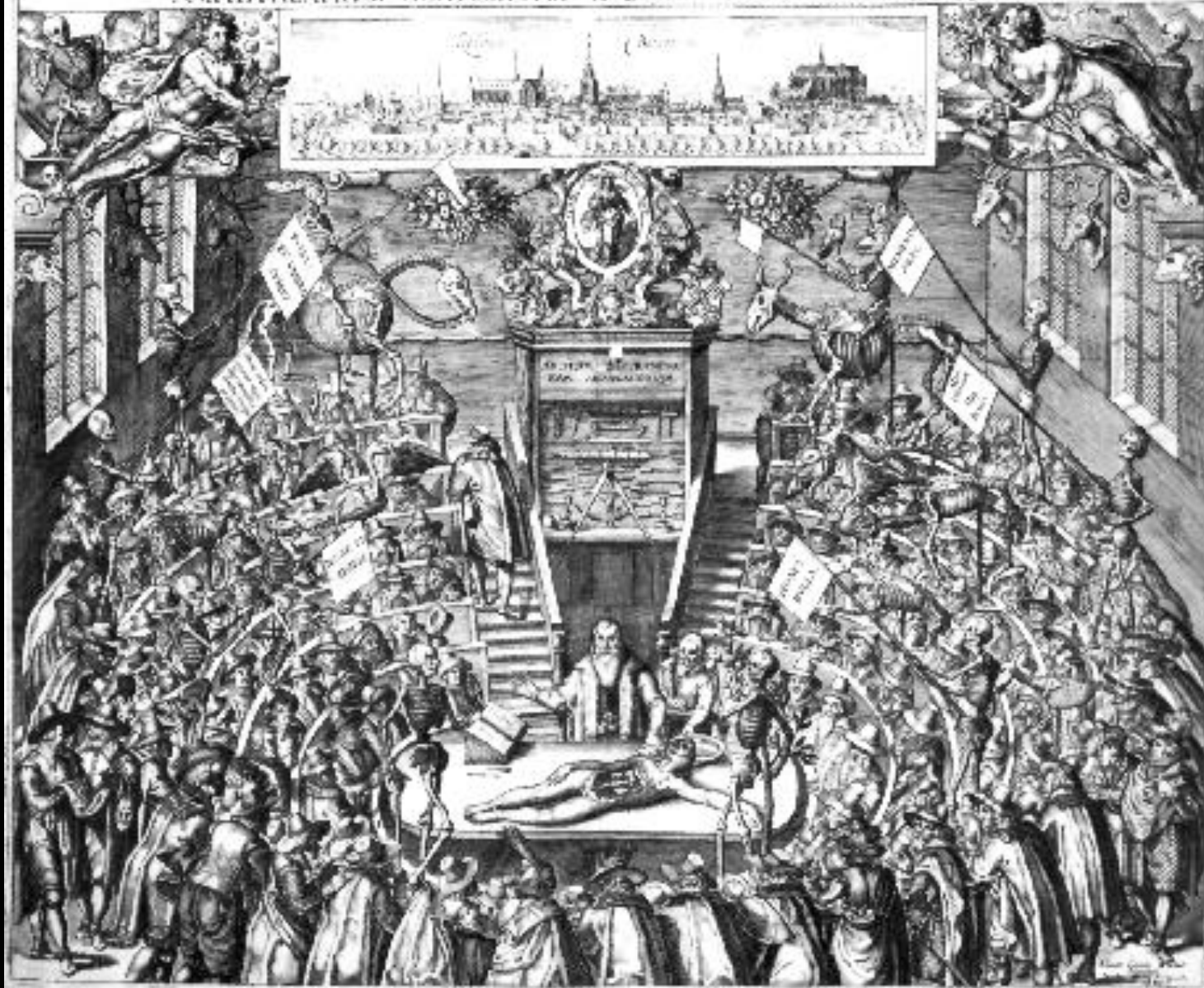


1 Plans and elevation for the Barber Surgeon's Anatomy Theatre

VERA ANATOMIÆ LUGDUNO-BATAVÆ CUM SCELETIS ET RELIQUIS QVÆ IBI EXTANT DELINEATIO.

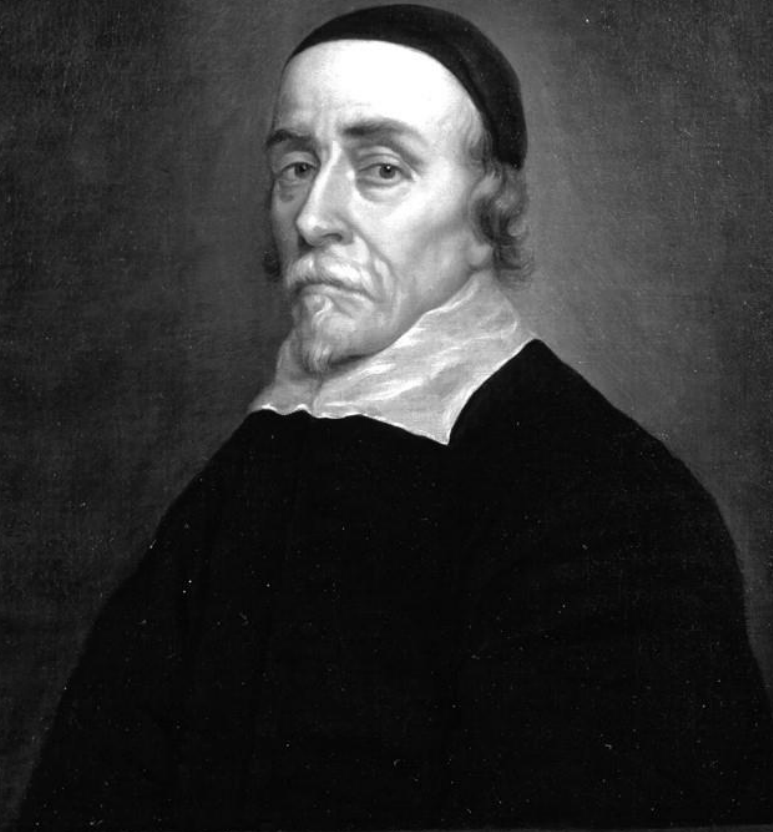


AMPHITHEATRUM ANATOMICVM LADVNO BATAVORVM. 1685





GVILIELMVS. HARVEIVS. M D.

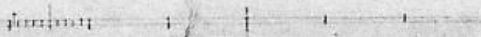
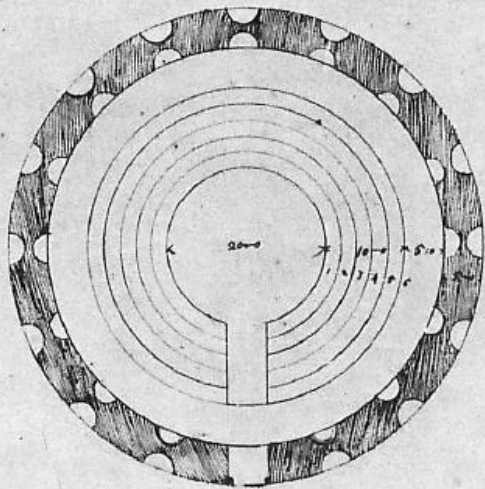
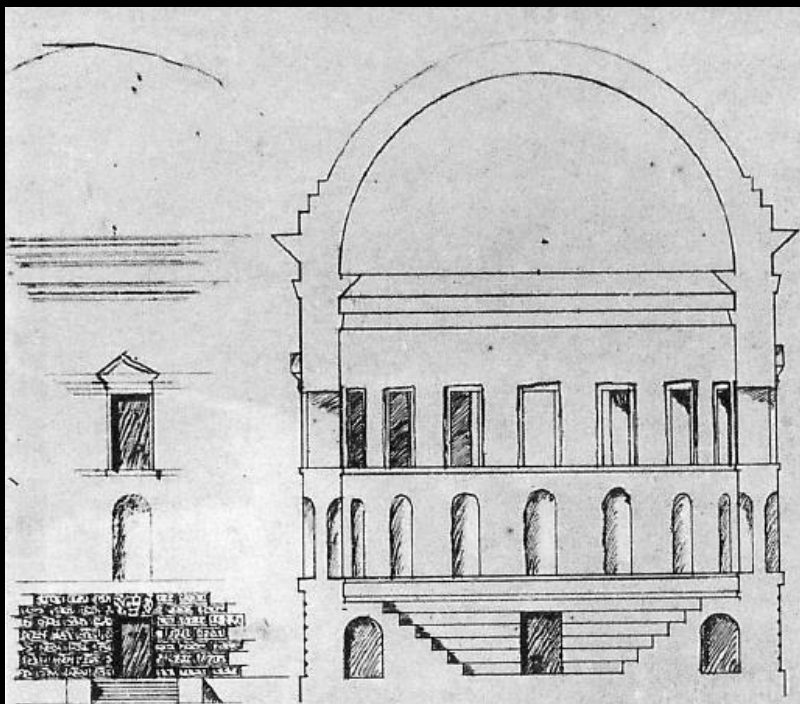


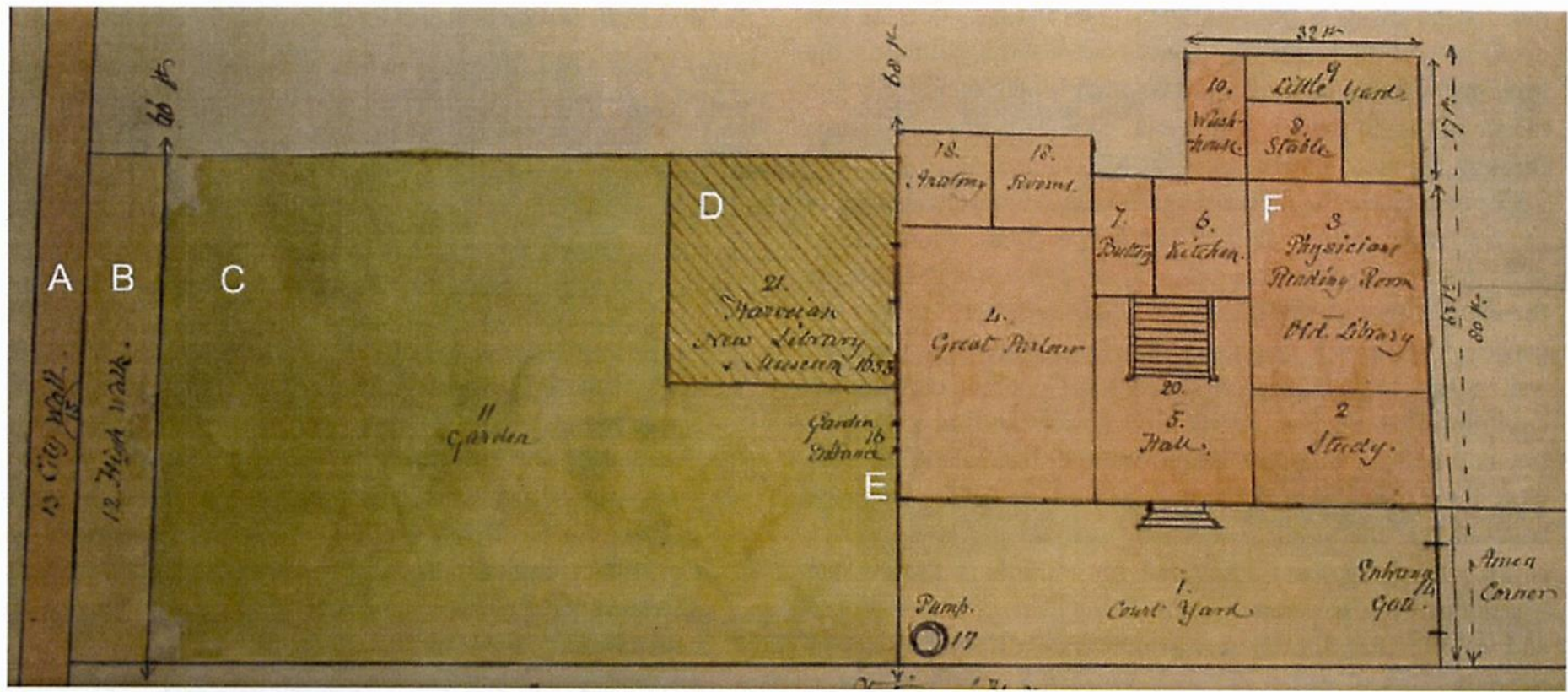
*Sic ora ferebat.*  
*Magnus Naturæ Rimator*  
*Et Circulationis Sanguinis Demonstrator Primus*  
*Gulielmus Harveius.*

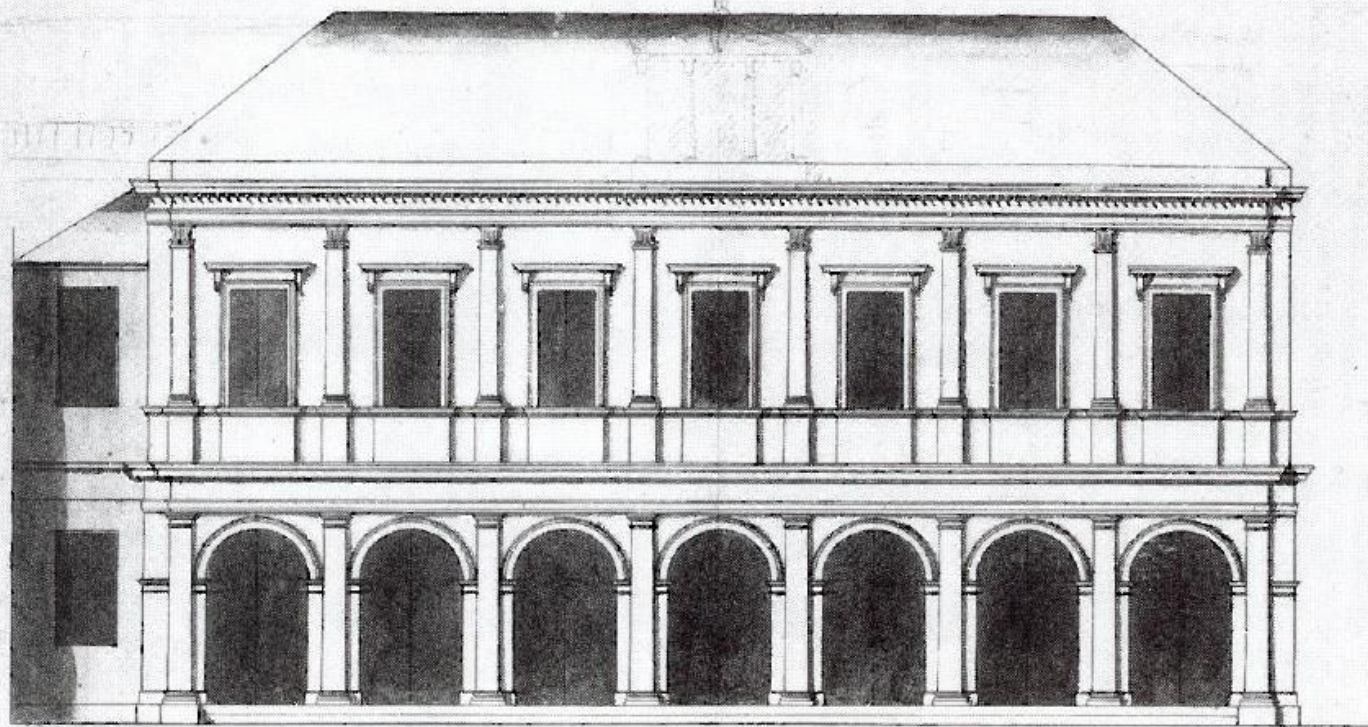


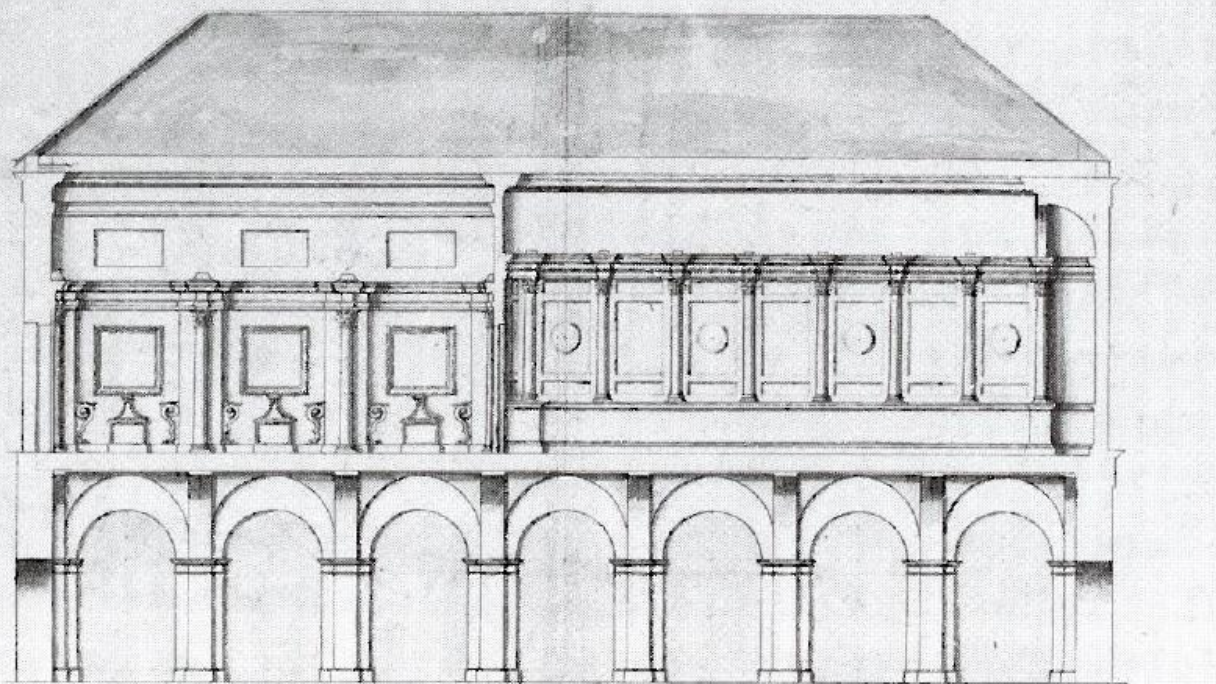
Thomas  
died at the age of 152

rememb  
the part  
part of  
Winington in the Parish of Alceburgh who was borne in the  
year 1163 in Hauke of King Edward & who being 152 yeares old





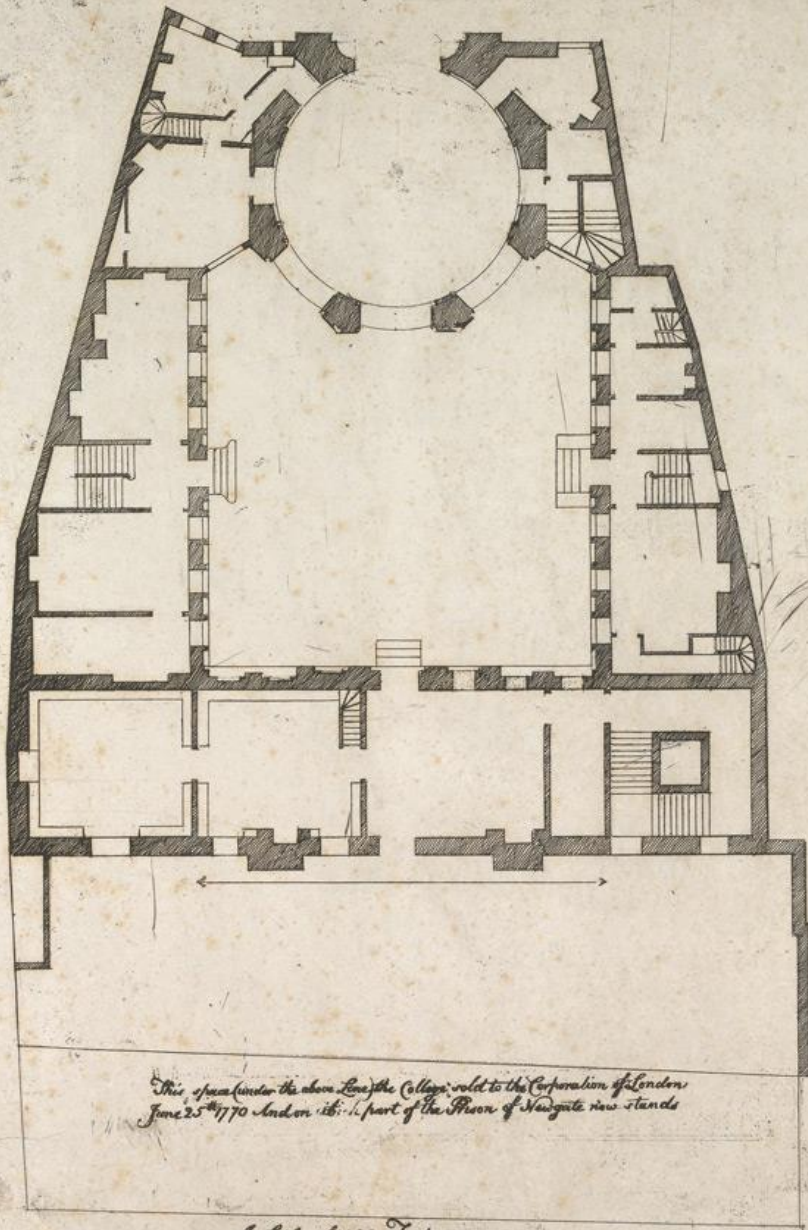






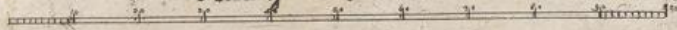
*Bethlehem Hospital*

*A Ground Plan of the College of Physicians in Warwick Lane London  
built after the great Fire in 1666.  
Presented to the President and Fellows by their Humble Servant W. in 1714.*



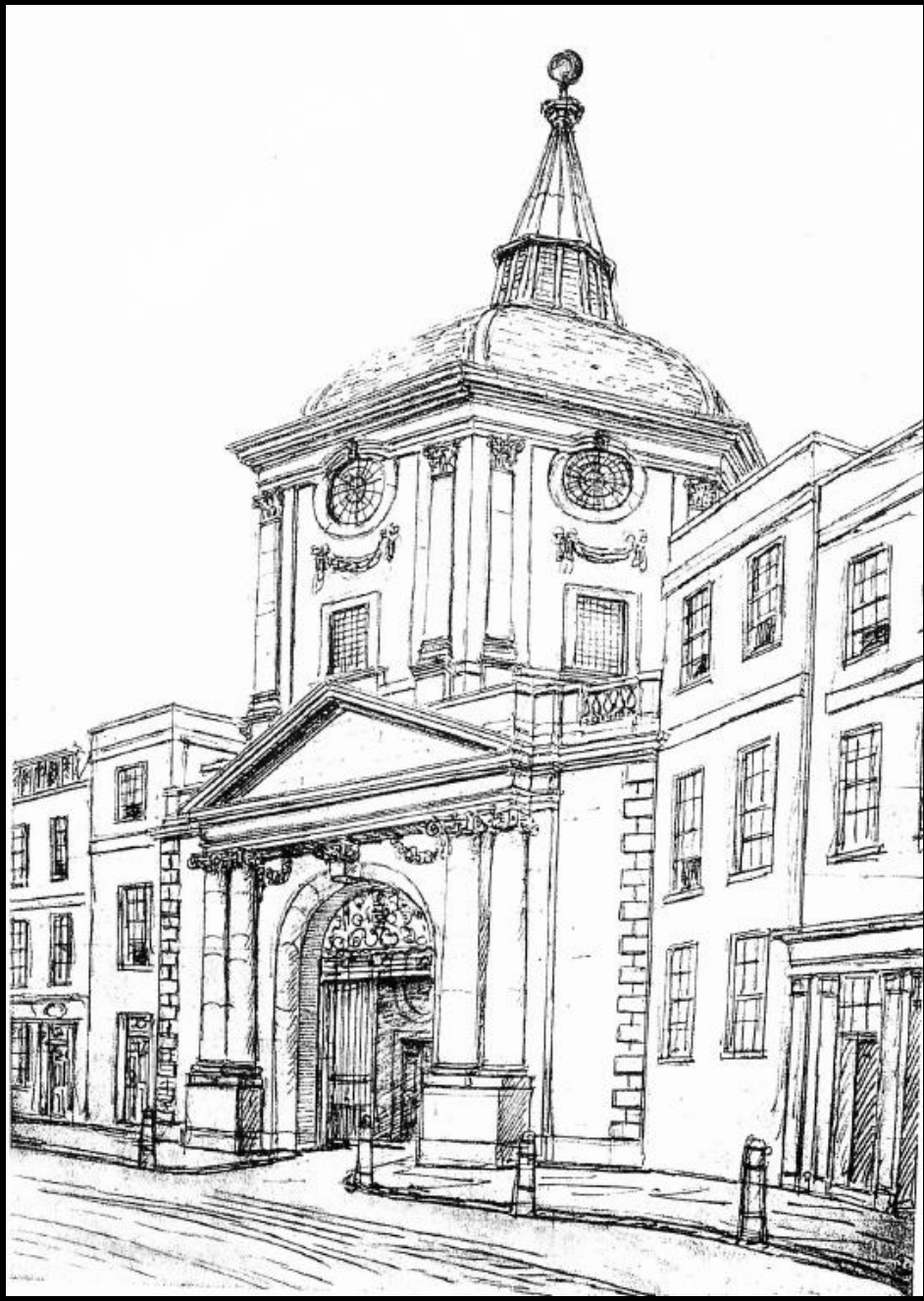
*This space (under the above Line) the College sold to the Corporation of London  
June 25<sup>th</sup> 1770 And on 16<sup>th</sup> 1. part of the Prison of Newgate now stands*

*A Scale of 100 Feet*









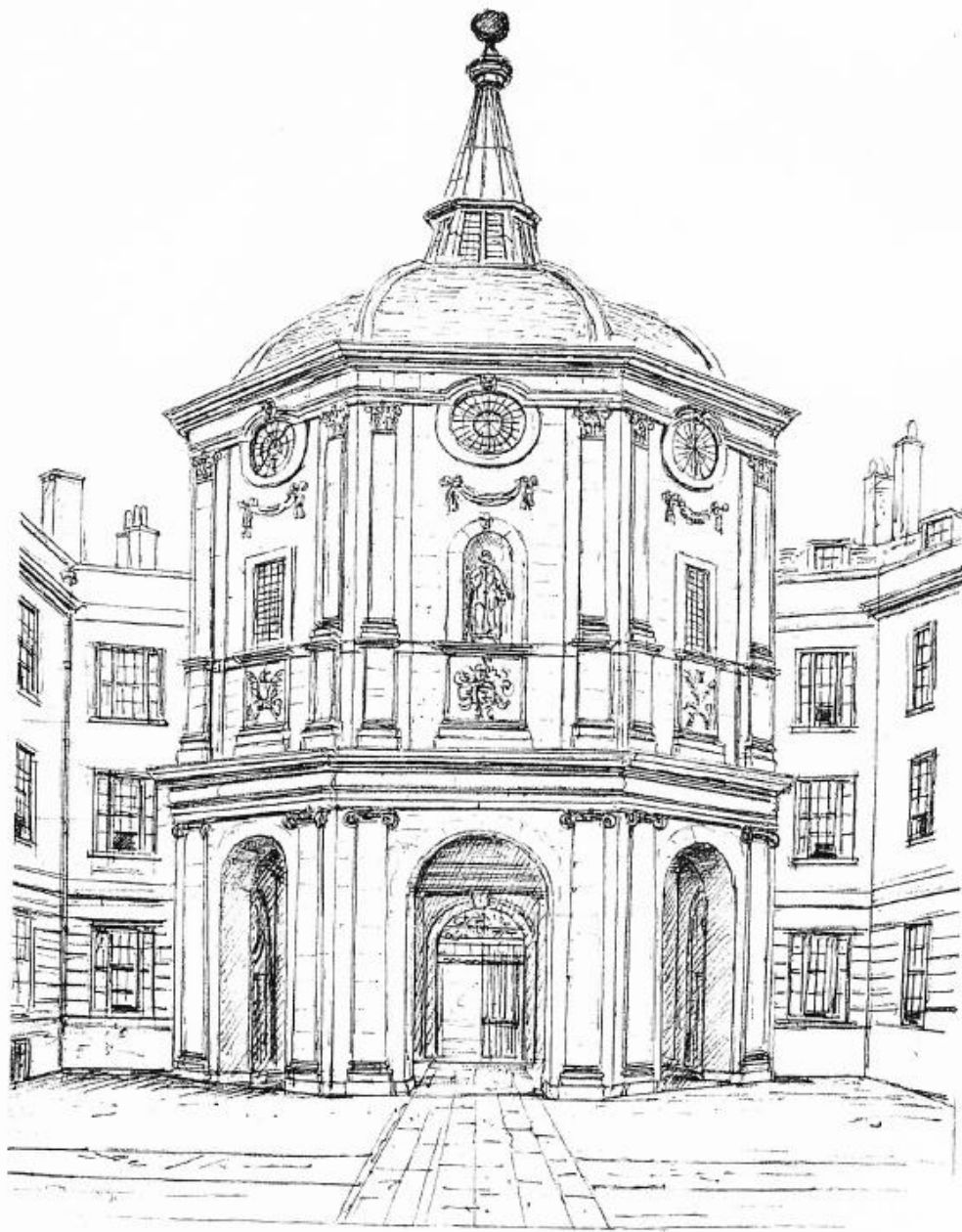


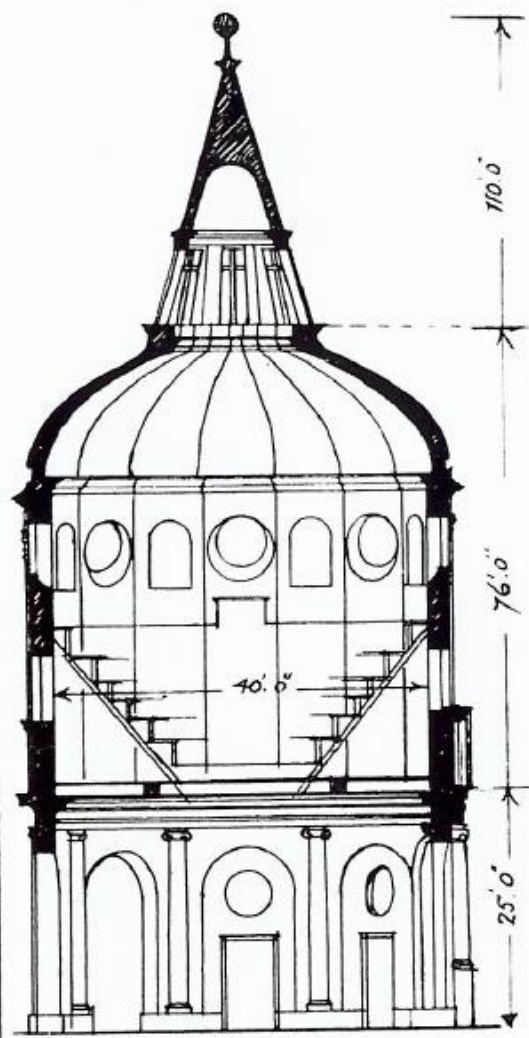


*Collegium Regale Medicorum LONDINENSIVM.*

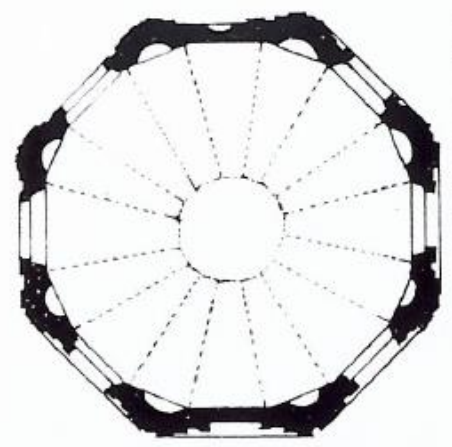
*The ROYAL COLLEDGE of PHISITIANS LONDON*



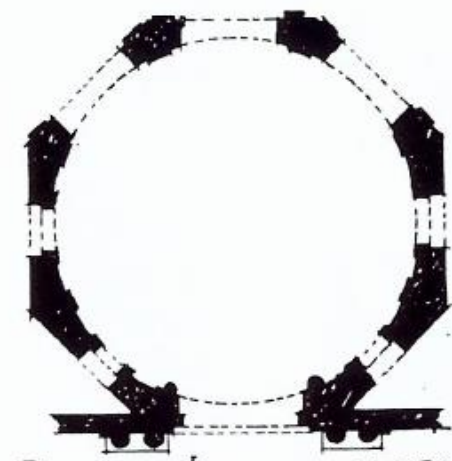




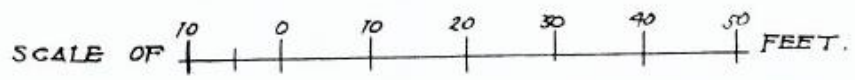
SECTION



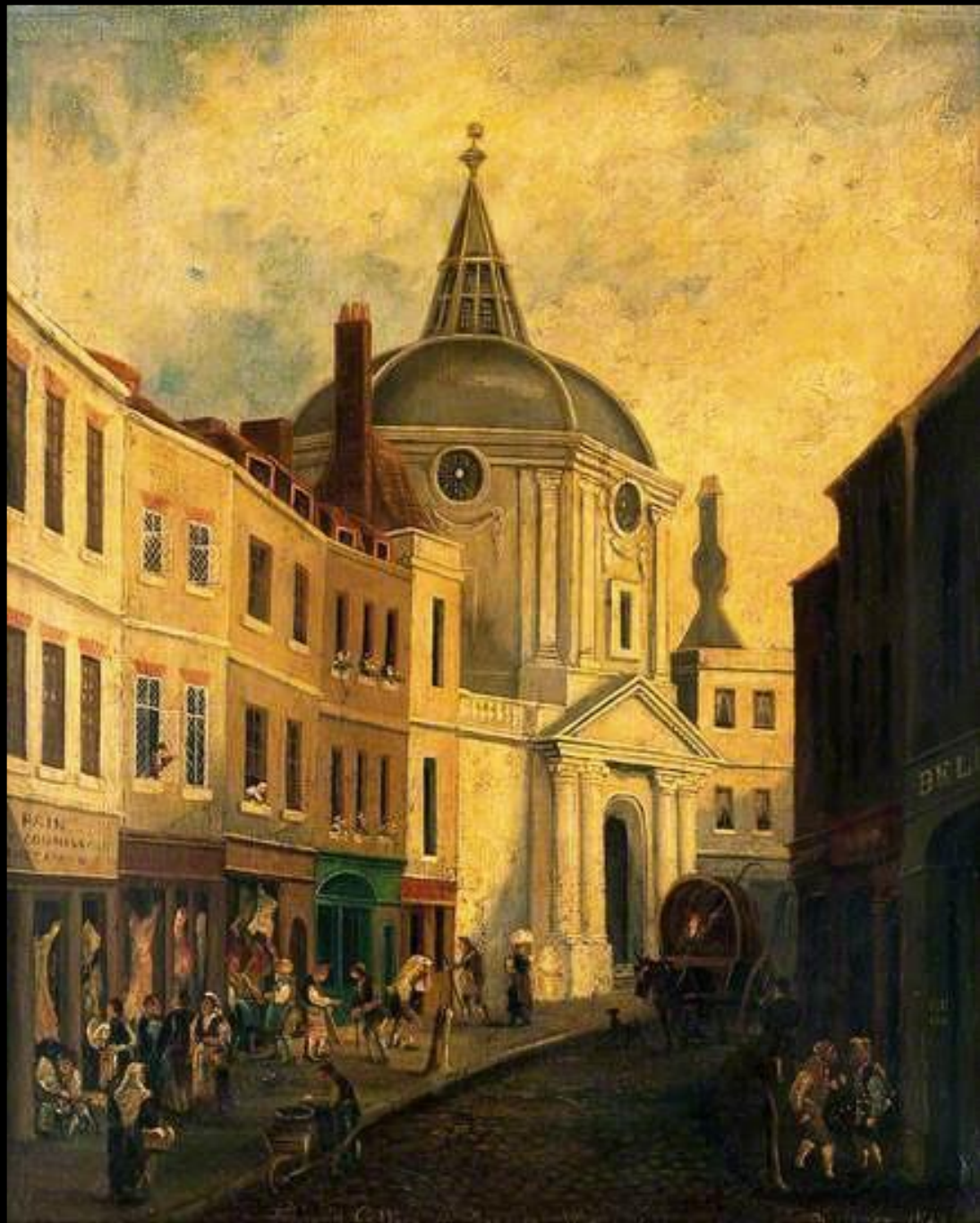
PLAN OF THEATRE.



PLAN OF LOWER STOREY.

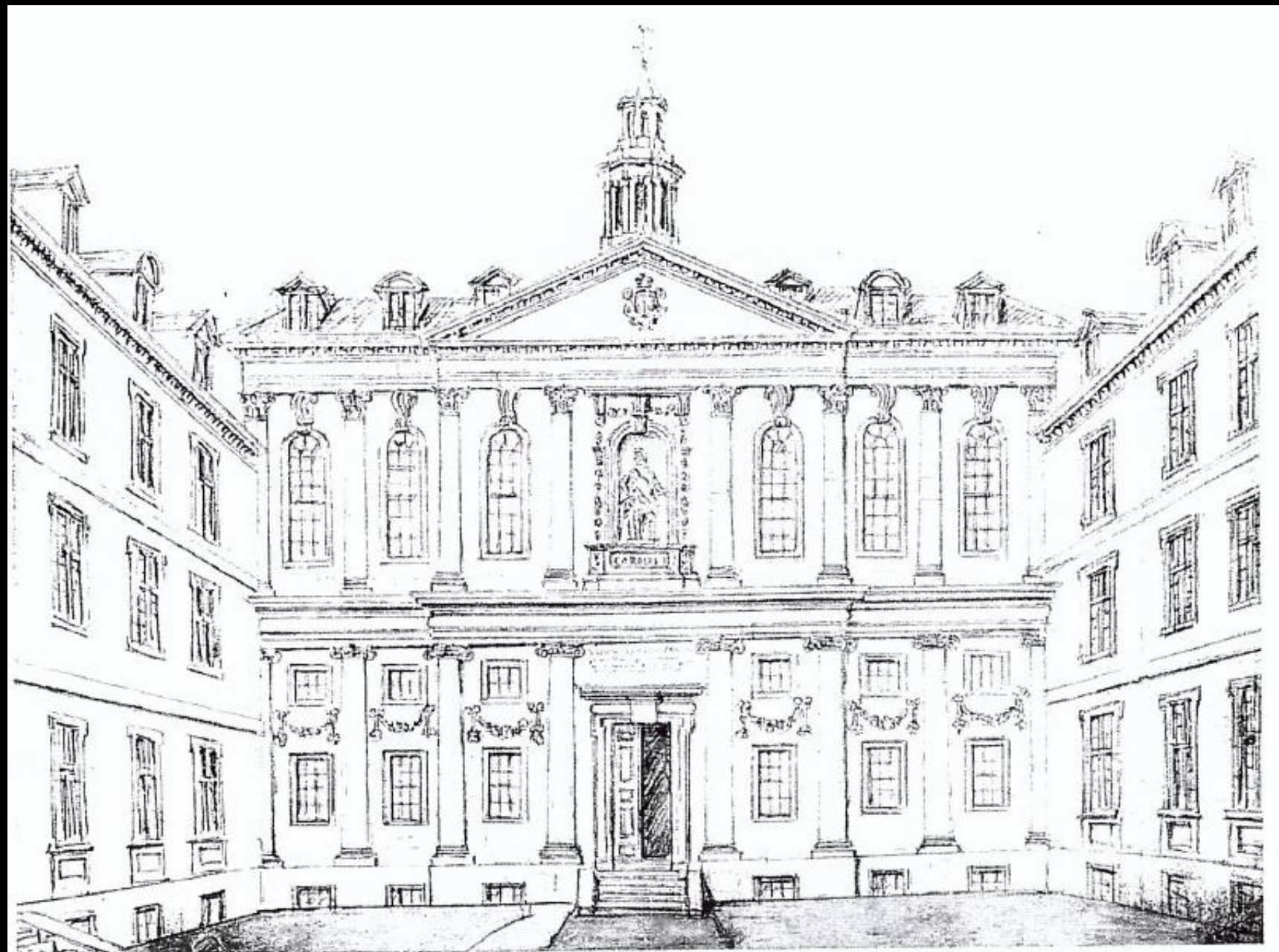


SKETCH PLANS AND SECTION OF THE LECTURE THEATRE.









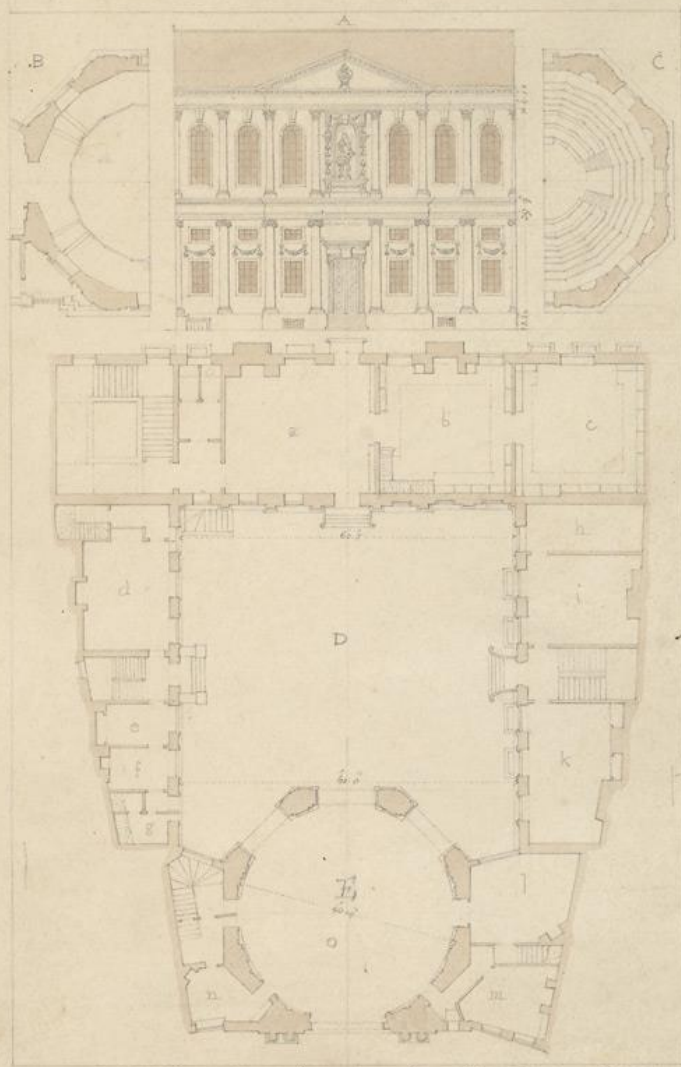


INSIDE



OUTSIDE

All these windows galls to ends



A little under  
than the windows

Scale 1/2 inch = 1 foot

COLLEGE OF PHYSICIANS

Warwick Lane

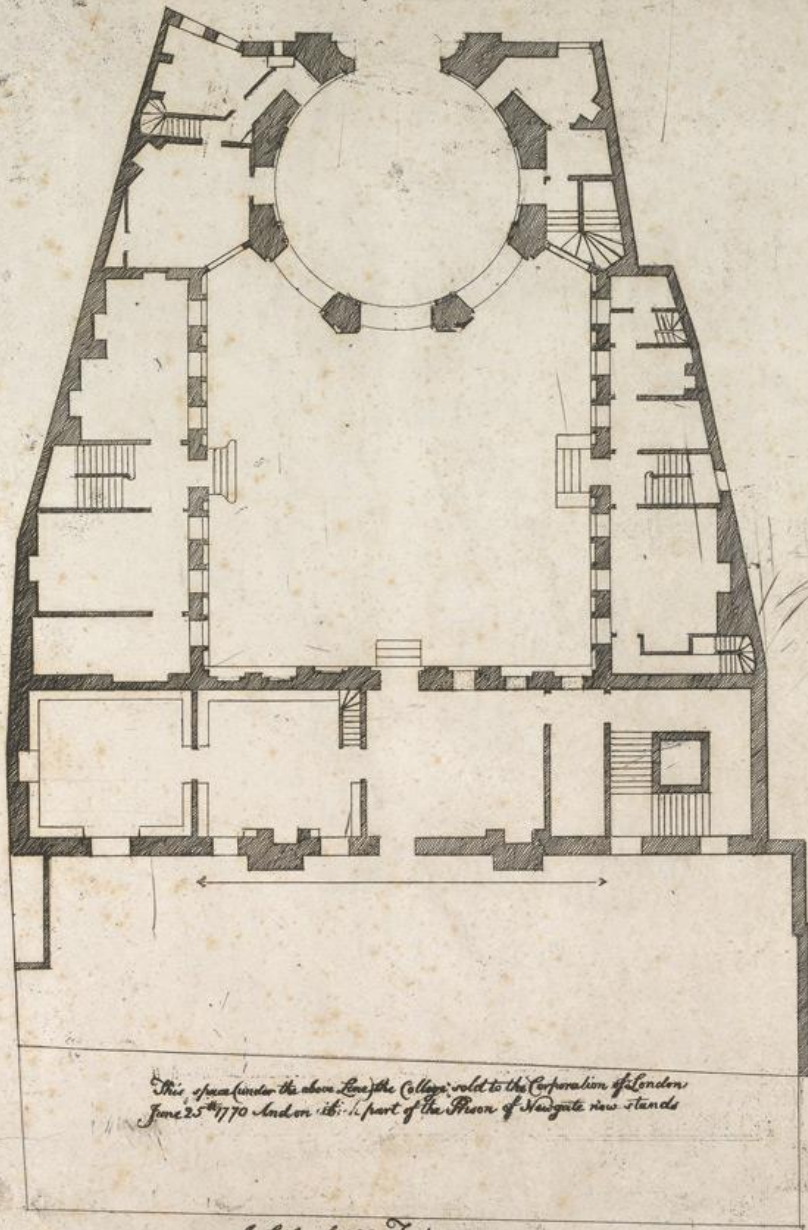
Jan. 1826 by S. Ware Esq.

A. Front Elevation within the Court. B. Plan of the Theatre level with the  
roof line. C. Plan of it above. D. General ground plan

For references see plan over

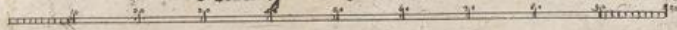
H. ANSTED

*A Ground Plan of the College of Physicians in Warwick Lane London  
built after the great Fire in 1666.  
Presented to the President and Fellows by their Humble Servant W. in 1714.*



*This space (under the above Line) the College sold to the Corporation of London  
June 25<sup>th</sup> 1770 And on 16<sup>th</sup> 1. part of the Prison of Newgate now stands*

*A Scale of 100 Feet*



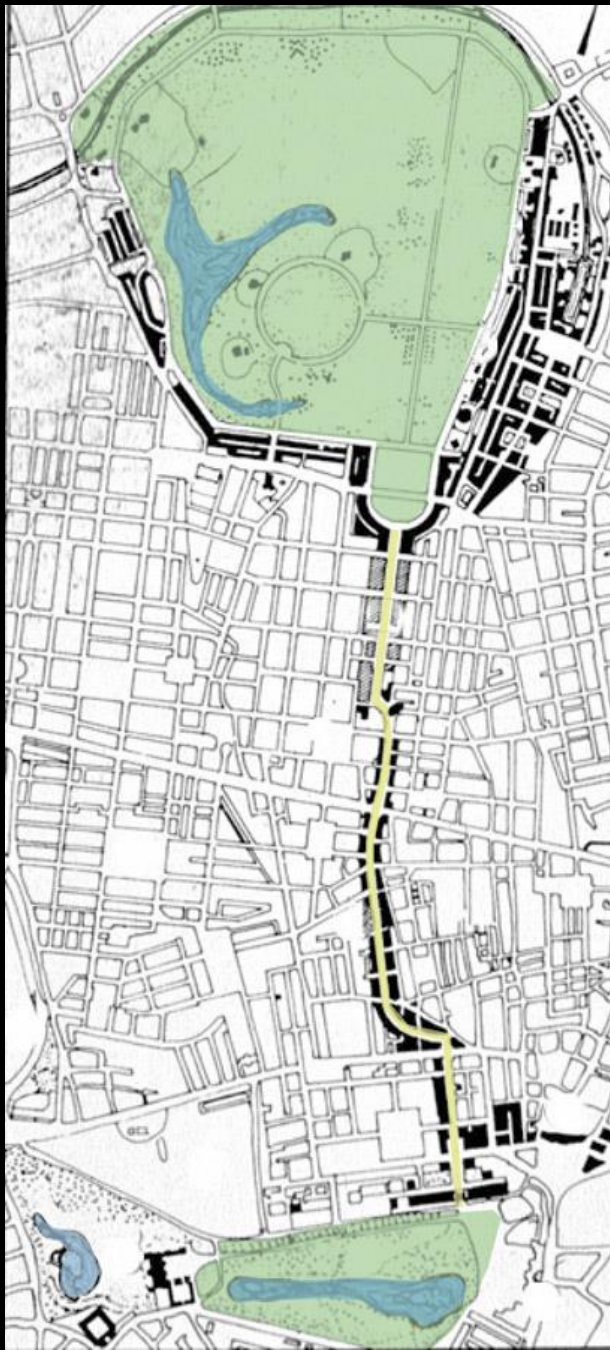


Reynolds & Pugh del et sculp

Shute sculp

THE COLLEGE OF PHYSICIANS.

London Pub. & Sold at R. Adamson's Repository of Arts in Strand.

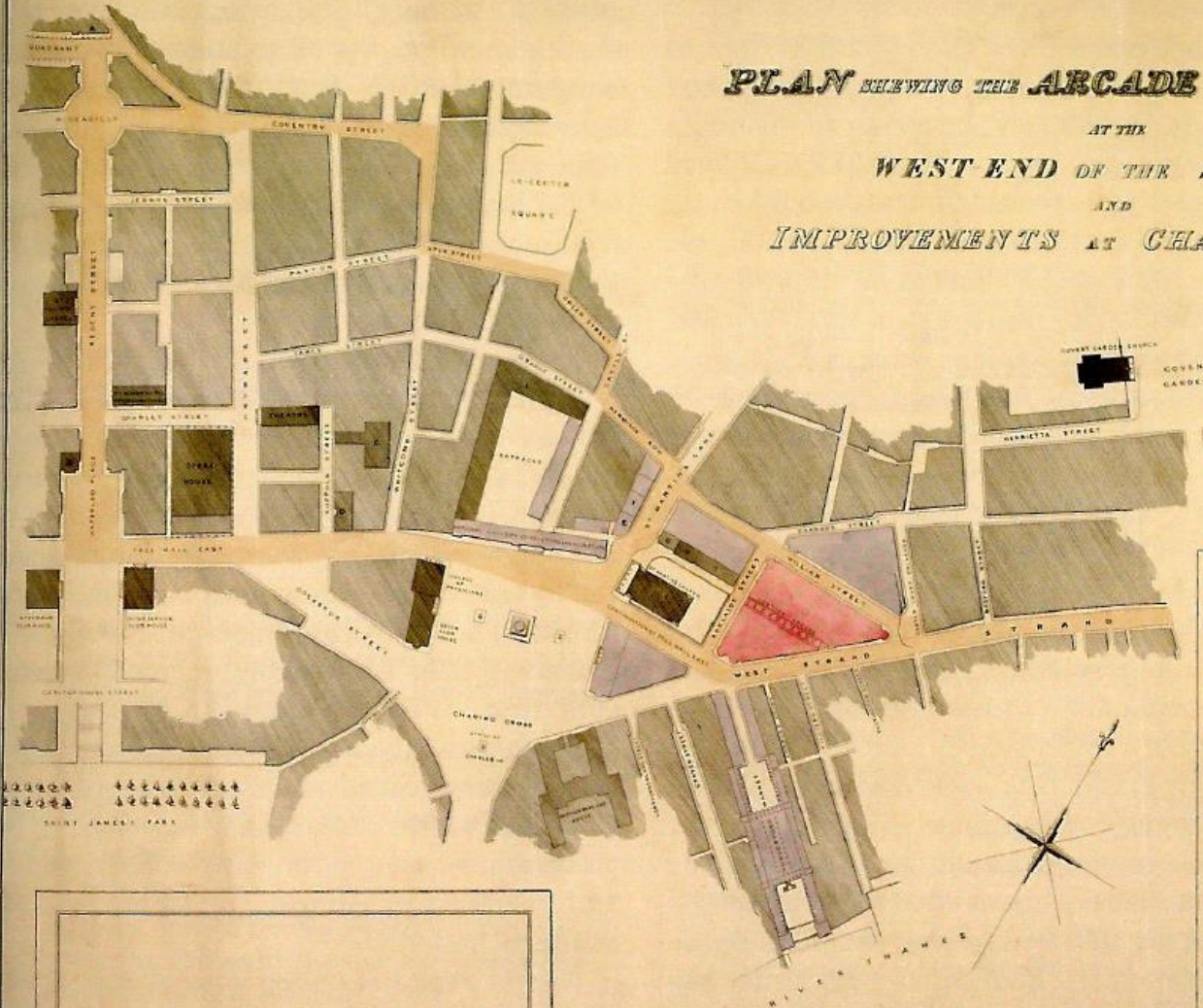


# PLAN SHEWING THE ARCADE AND NEW STREETS

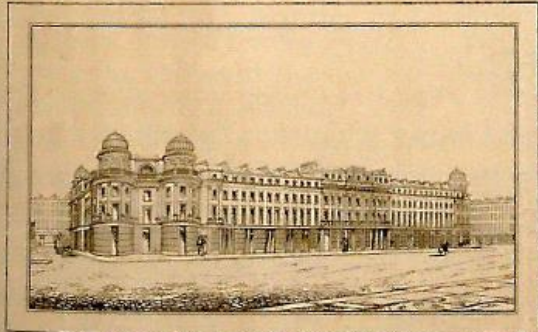
AT THE  
WEST END OF THE STRAND

AND  
IMPROVEMENTS AT CHARING CROSS.

WILLIAM HERBERT,  
FARM STREET, BARKLEY SQUARE  
DECEMBER, 1855.



CHURCH OF ST. JAMES'S  
CHURCH OF ST. MARTIN'S



ELEVATION OF WEST STRAND NEW BUILDING ON THE STRAND COLORED RED.

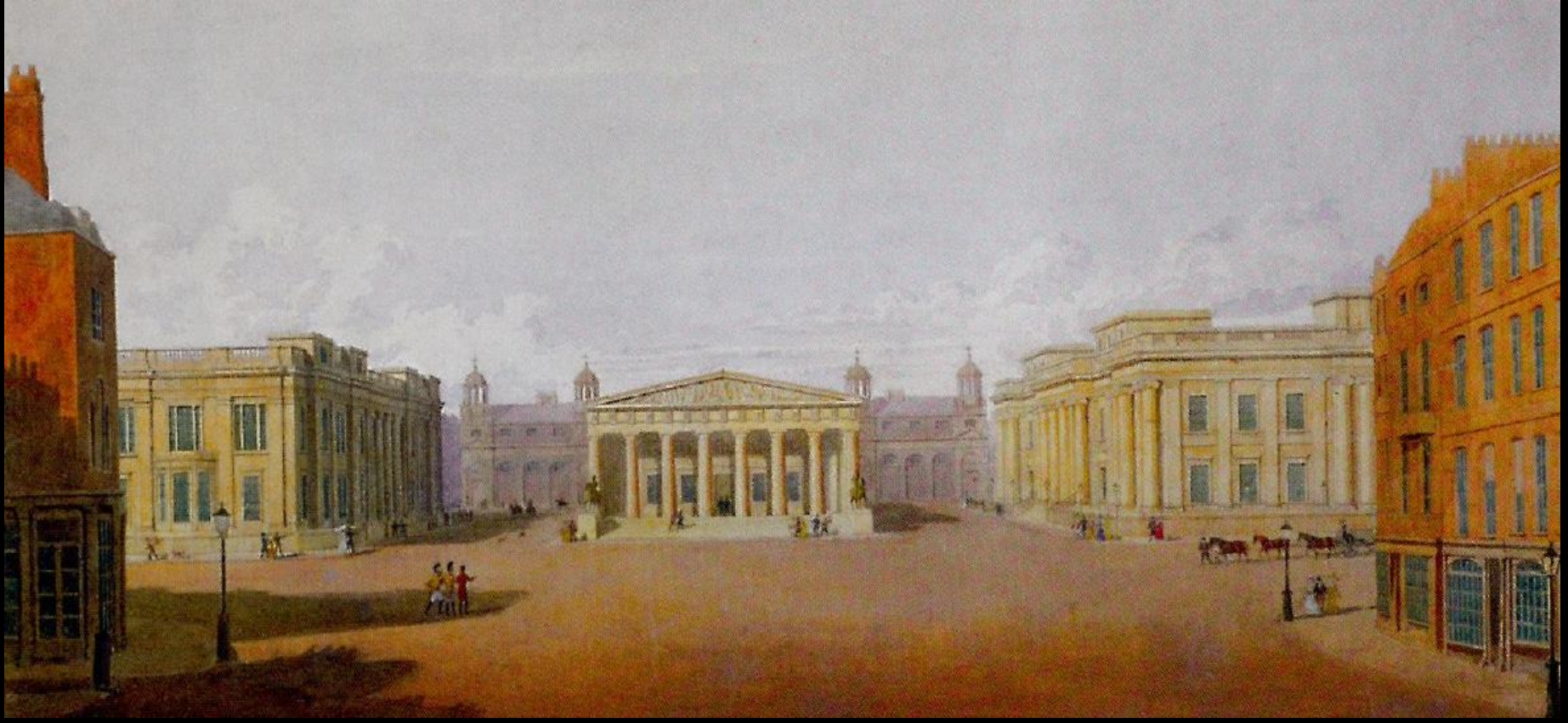
- REFERENCE
- 1. COUNTY FIRE OFFICE
  - 2. LITERARY AND CLUB HOUSE
  - 3. SOCIETY OF DRAMATISTS
  - 4. UNIVERSITY CLUBHOUSE
  - 5. WEST LONDON PROVISIONAL INSTITUTION
  - 6. SOCIETY OF SCIENTISTS
  - 7. HOUSES
  - 8. THEATRE
  - 9. NATIONAL SCHOOL

THE ARCADE IS EXACTLY LONG, BROAD,  
HIGH, AND IS OPEN AT BOTH ENDS OF  
THE STRAND. THE ARCHES ARE ALL  
THE SAME PART ARE 25 FEET DEEP  
ALL HAVING LIGHT AND AIR IN THE MIDDLE



LOWER ARCADE











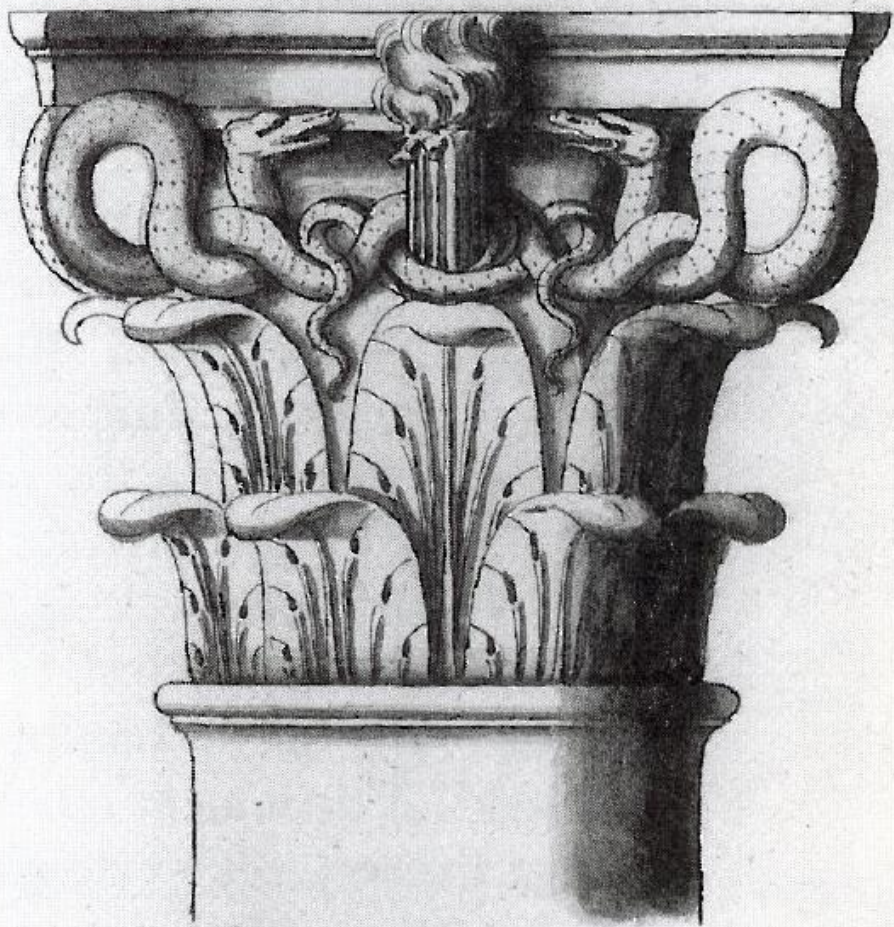
















23567





DR. WILLIAM JEXEK  
President of the Royal College of Physicians



DR. W. A. ARMYTAGE  
President of the Royal College of Surgeons









# SMOKING AND HEALTH



*A report of The Royal College of Physicians on smoking  
in relation to cancer of the lung and other diseases*



gettyimages®  
Keystone

505813896















