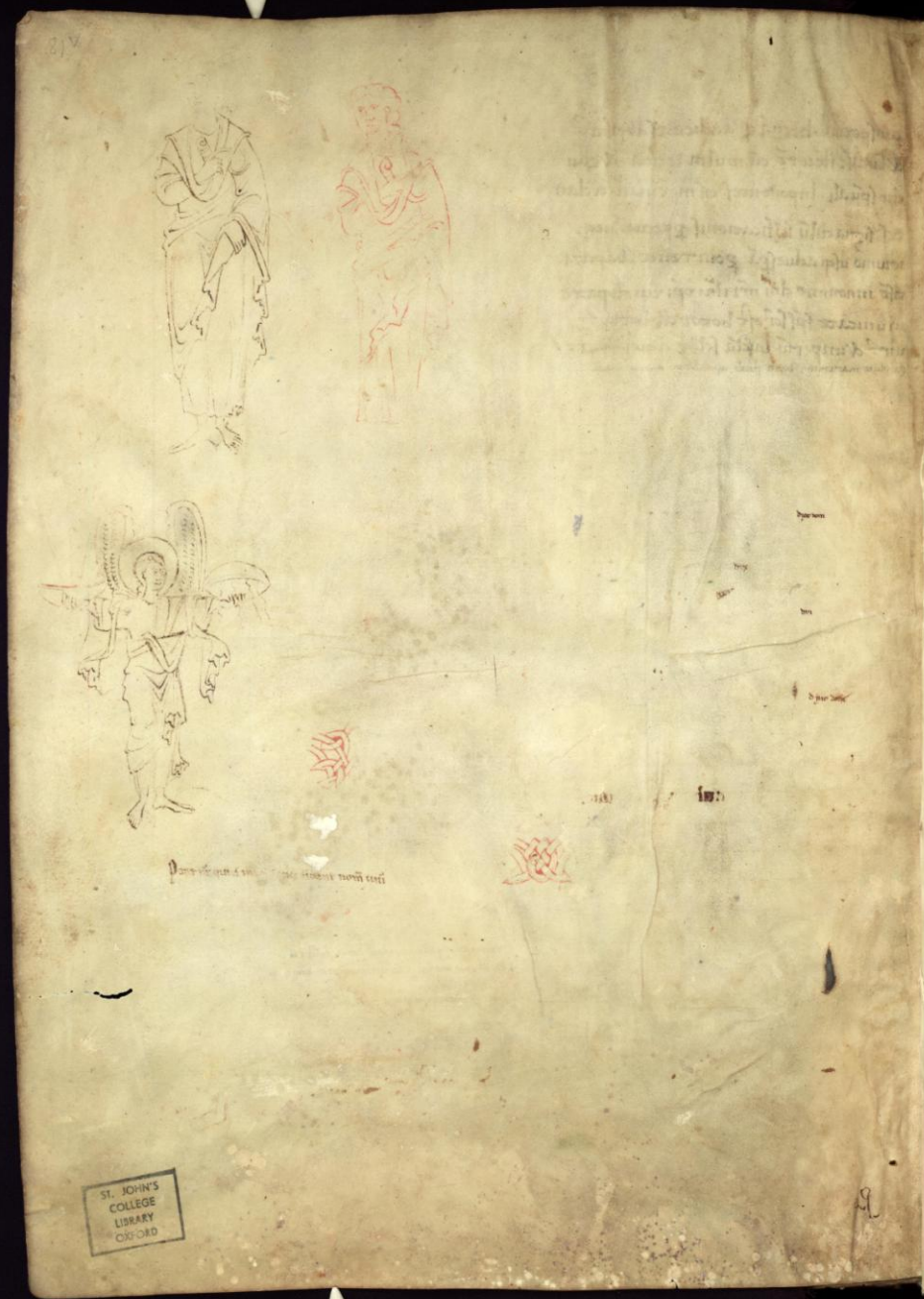


# DRAWINGS IN ANGLO-SAXON MANUSCRIPTS





ST. JOHN'S  
COLLEGE  
LIBRARY  
OXFORD



William Howard, 1892



um: gl'ia h'ec  
 el.  
 cum infirma  
 adate cum  
 eius.  
 e cum inpsal  
 : laudate eum  
 ntibus: lau  
 s: omnis sps

Picture et scriptura huius pagine subius  
uisa est de propria manu s<sup>c</sup>i dunstani.

*Alley . d . d .*



*NE. D. 2. 19.*  
*(2176)*  
*Bod. 578.*

*Dunstanum memet ele-  
mens rogo xpe tueri  
Cenarias me nos suas  
forbisse procellas*



1  
2  
3  
4  
5  
6  
7  
8  
9  
10  
11  
12  
13  
14  
15  
16  
17  
18  
19  
20  
21  
22  
23  
24  
25  
26  
27  
28  
29  
30  
31  
32  
33  
34

oriterere patē misericors iuuenū  
 & eoz q̄ se infide rudes. non of  
 ac illos m̄ infidelū ē bines  
 destrucos relinquis. Tunc  
 peccatū roganab: se ait.  
 fugendū sua deas. & iu  
 uenū acq̄ infirmoz cop  
 dib: exēplo n̄ro meū  
 passionis incutere. cū  
 uerbū dī estant debe  
 anī asserere. & cā  
 castimonie funda  
 mēta quecumq̄ eser  
 uare. fugendū pu  
 taris. ut morte decli  
 nem. quā multas  
 suspiriū & gēmi  
 ab: dū tē n̄  
 ut ingressū  
 uis ex  
 qua dīā  
 illius  
 lacōnē  
 clarificare  
 debent.  
 Et s̄ ū hec au dī entes?  
 leuauer̄ plancum  
 dicentes. Opae uera  
 cissime: ubi s̄ uerba  
 modo q̄b: dicebas  
 qm̄ putā n̄ra morā  
 esse succūbere.  
 & n̄ impetrare



n̄ possū. uq̄ n̄ra salute donec corro  
 boreū patiaris aliquantū ū uiuere.  
 Adolecentes quoq; quos ipse sollicite  
 custodiens. infide & castitate seculo  
 educabat: manū p̄cedentes in celū  
 & porrecta. ante facē illius uolūt subito  
 morari  
 cadentes int̄rā. uocifera  
 bant n̄mis hūilatu  
 clamanes. Obone peccē:  
 pastor & patē. p̄ tuū dñm̄ inclemētia  
 singularis: cur nos affecit mat̄no  
 nouit̄ psacrū fontē dño pe  
 p̄stī. quos cā immaculo solatio  
 & animo crudeli q̄e nūquā  
 antea atangerat. In manus  
 simoz morsib: lupoz exponis.  
 Clamabant autē & in acrone.  
 pulue  
 misēdia  
 solebas.  
 re c̄psis capiab: hec em̄ est  
 quā desul uatore tuo p̄dicare  
 q̄ tuis lacrimis se quē ad c̄p̄ pul  
 negaueris meōnū pietate meō  
 indulserat. Et eucanas lacrimarū  
 fluminib: te ut paruo tēpore non  
 cecidit. p̄serā cū & dño possis ministrare  
 in carne. & t̄ reseruatā coronā adipisci  
 p̄petuā. Sed & custodes carceris pro  
 cessus & maritimanū. cū reliquis ma  
 gistrans ex officio uincas: postulabat  
 oū dicentes. Dñe quous abscede: quia  
 impatorē oblitū tuū iā credim̄: s̄  
 iste inquisim̄ agrippa peu cū amore  
 & incēpantū sue libidinis inflāmat.  
 p̄dere te festinat. Siem̄ te regis iussione

COLICE PERNUMERUM QUICQUID CUPIS ESSE PROBANDUM  
 INDE SI AUI NOMEN PERIURA IUSIAMQUE DILL  
 LULICTAMQUE VNA SUMMAM PAR IVRA TRIGENOS  
 QUOD SUPER IVERIT ROTULVS DISCERNET VTERQUE  
 QUOS IFTIN ET VITAE NECNON ET MORTIS IMA CO  
 SISUPRA IVERIT VIVET MORIETVR ET IN ITRA

A III  
 B VII  
 C XXXII  
 D XXXIII  
 E XXV  
 F III  
 G VII  
 H VI  
 I XV  
 K III  
 L III  
 M XXXII  
 N XX  
 O IX



A. cccc  
 B. ccc  
 C. c  
 D. d  
 E. cc  
 F. xl  
 G. cccc  
 H. cc  
 I. i  
 K. c  
 L. l  
 M. i  
 N. xc  
 O. xl









A. caudam ad caudam serpentem prolabitur argo.  
 C. caudam prope prope cum lumine pupam  
 S. in illa nauis in illo pondere prope  
 A. nec solum rostro neptunia puca secant  
 S. clamor ex gremio celis per loca porat.  
 S. iam tu cepit clypeos contingere portus  
 A. hauriant nauim magno cu pondere nauis.  
 A. dactylisq. valant obtata adhaerere pupam  
 S. canora utat sup. rubea uertitur argo.  
 A. equis proxi ac adli sumu finelumne malis  
 A. mala ad pupam claua cu luce cadecur  
 S. nate gubernaculu disper solumne fulgore  
 C. lani posteriora canis utstigia. clarum. tandem



62.  
**N**auis quae apud  
 argiuos argo uo  
 canit. habet stellas  
 in anteriori parte  
 nauis. iii. & impu  
 pi. iiii. In ueroq.  
 timone v. In uelo  
 iiii. In costa nauis  
 v. Sunt omnes. xvi.

**C**ostis sub arce &  
 piscis. gradibus  
 habet stellas. i. i.  
 cauda ii. obscuras.  
 Neuda. usq. ad  
 gremiu. vi. In uen  
 tre vi.  
 Sunt omnes. xiiii.



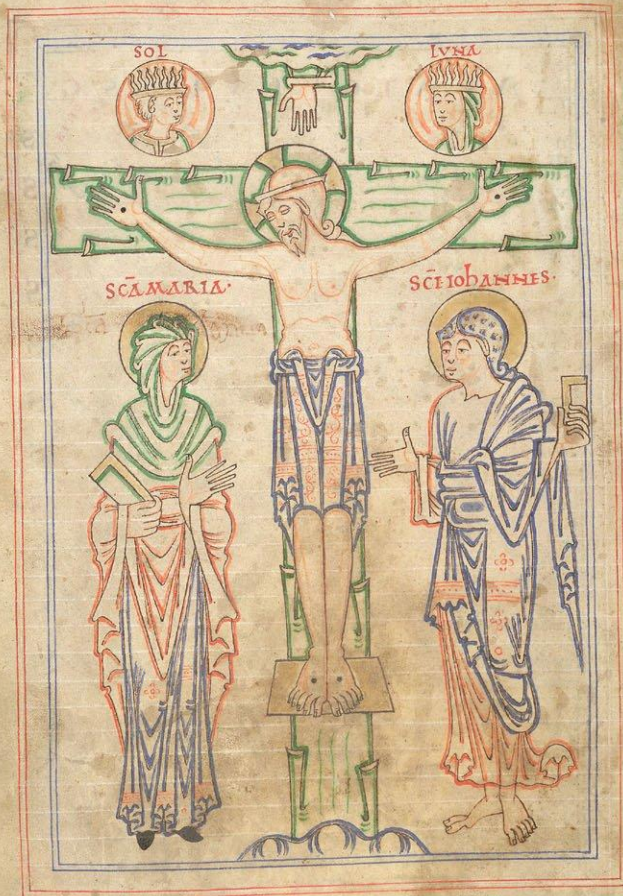


<b>N</b> ONAE APRIL'	<b>M</b> ORUNT QUINOS.
<b>O</b> lone kalende	affin depmunt
<b>I</b> dus aprilis	cciam fecit.
<b>N</b> one quibane	namq; dpondo
<b>I</b> tem undene	ambunt quinos
<b>Q</b> uatuor idus	capunt ternos
<b>T</b> erne kalende	titulant sene
<b>Q</b> uatuor done	culant inquadis
<b>S</b> eptenos idus	septem elugunt
<b>S</b> ene kalende	fortunt ternos
<b>O</b> ne septene	domant affin
<b>P</b> ridie nonarum	portu quaternt
<b>N</b> ovene kalende	nocantur septent
<b>P</b> ridie idus	pandunt quinis
<b>K</b> alende april'	unum exprimunt
<b>O</b> uodene namq;	dotte quaternt
<b>S</b> epteni quinciam	septemnt duob;
<b>Q</b> uaterne kalende	quinta concant
<b>Q</b> uandene constant	trib; adpete;

S. spacomius abb.

Morunt quinos. Olone kl.

LIBRARY  
HSLIB

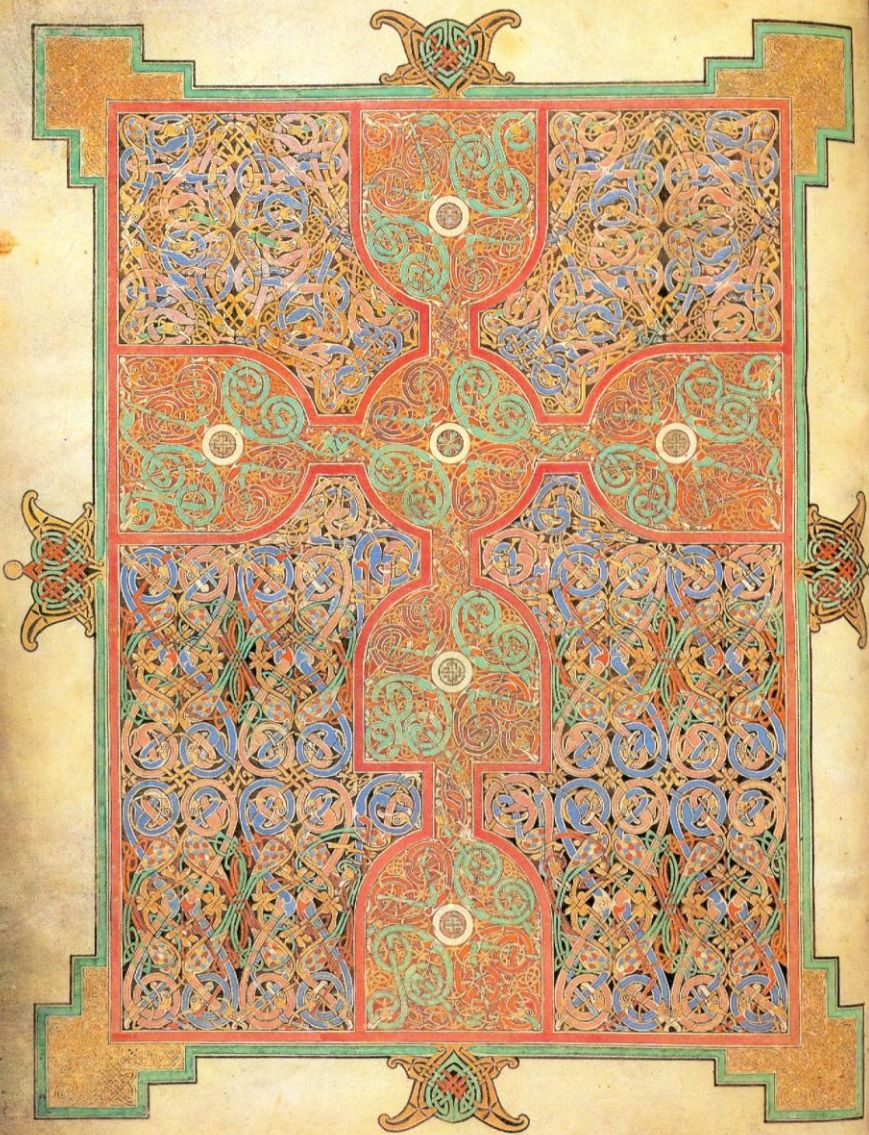




William Howard, 1892



um: gl'ia h'ec  
 el.  
 cum infirma  
 adate cum  
 eius.  
 e cum inpsal  
 : laudate eum  
 ntibus: lau  
 s: omnis sps



AME ET CUM CLAMARE  
 ADEUM EXAUDIUIT ME  
 APUD TEL AUS ME IN EC  
 CLESIA MAGNA. UOTA  
 MEA REDDAM IN CON  
 SPECTU TEMENTI UOIUM  
 EDENT PAUPERES SAT  
 TURABUNTUR. ET LAU  
 DABUNT DN M QUI RE  
 QUIRUNT EUM. UI  
 UENT CORDA PIORUM  
 IN SAECULUS. AECULI  
 REMINISCENTUR ET CON  
 UERTENTUR AD DN M  
 UNI UERSI FINES TERRAE  
 ET ADORABUNT IN  
 CONSP ECTU SUIUS  
 UNI UERSAE FAMILIAE  
 GENTIUM  
 QUONIAM DN I EST REG  
 NUM. ET IPSE DOMINA  
 BITUR GENTIUM  
 MANDUCAUERUNT ET  
 ADORAUERUNT  
 OMN I S IN CUIUS TERRAE  
 IN CONSP ECTU SUIUS CA  
 DENT OMN I S QUI DESCEN  
 DUNT INTER RAM  
 ET ANIMA MEA ILLI UI  
 UET. ET SEMEN MEUM  
 SERUI ET IPSI  
 ADNUNCIABITUR DN OCE  
 NERATIO UENTURA. ET  
 ADNUNCIABUNT IUSTI  
 TIA SUIUS. POPULO QUI NAS  
 CITUR. QUE FECIT DN S

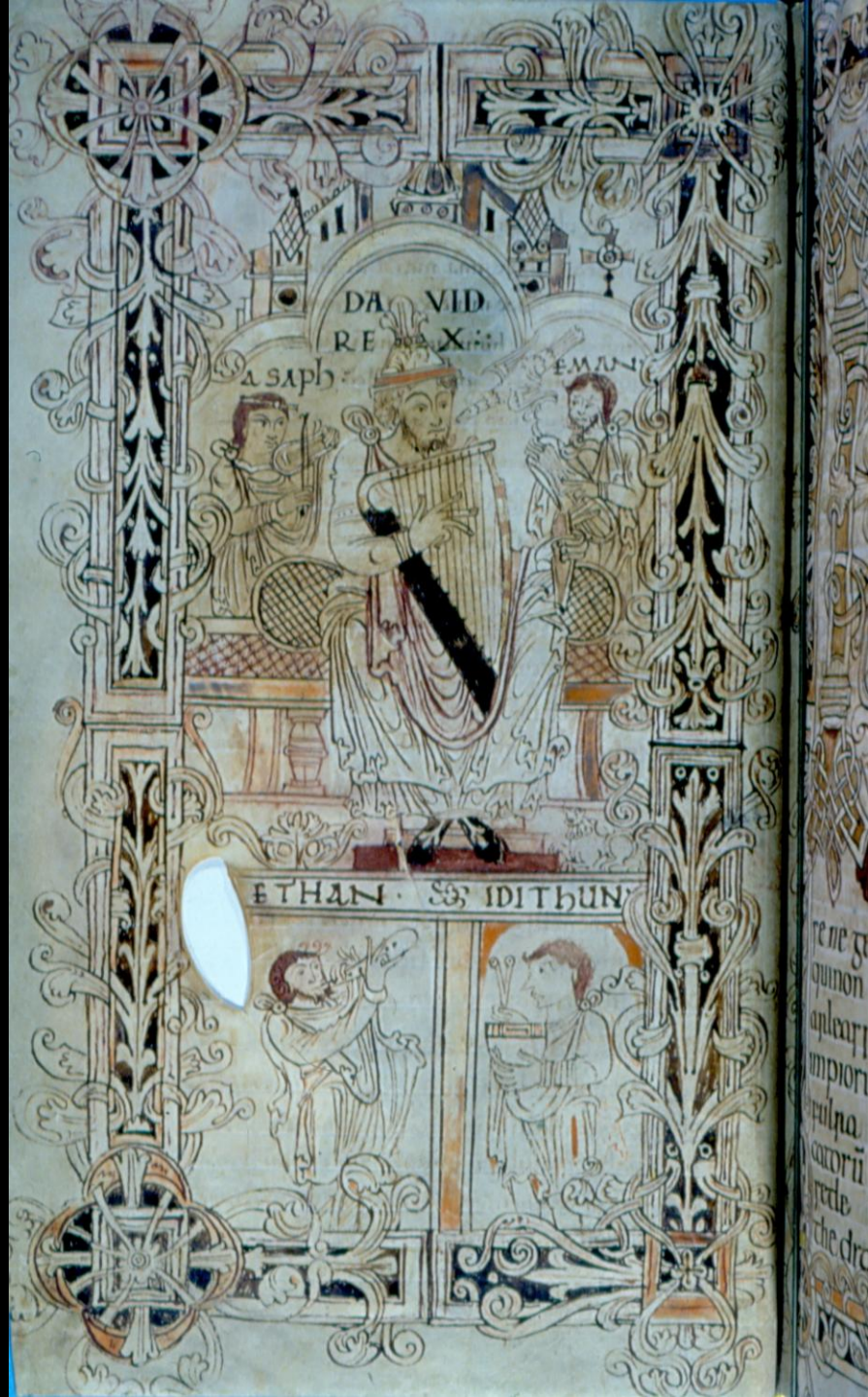


**XXII PSALMUS**

**DALIO**

DN S RECI T O E T N I H I L  
 MI H I D E E R I T I N L O C O P A S  
 C U S I B I M E C O L L O C A B I T  
 S U P E R A Q U A R E F F E C T I O  
 N I S E D U C A U I T M E A N I  
 M A M E A M C O N U E R T I T  
 O D E D U X I T M E S U P E R S E M I  
 T A S I U S T I T I A E P R O P T E R  
 N O M E N S U U M  
 N A M E T S I A B U L A U E R O  
 I N M E D I O U M B R A E M O R  
 T I S N O N T I M E B O M A L A  
 Q M T U M E C U M E S  
 C I R C A T U A E T B A C U L U S T U  
 U S I P S A M E C O N S O L A T A S T  
 P A R A S T I I N C O N S P E C T U  
 M E O M E N S A A D U E R S U  
 E O S Q U I T R I B U L A N T M E  
 I N P I N G U A S T I I N O L E O  
 C A P U T M E U M E T C A L I X  
 M E U S I N F B R I A N S Q U A M  
 P R A E C L A R U S E S T  
 E T M I S E R I C O R D I A T U A  
 S U B S E Q U E T U R M E  
 O M N I B U S D I E B U S U I  
 T A M E A E  
 E T U T I N H A B I T I M I N D O  
 M O D N I I N I O N G I  
 T U D I N E D I S T R U M





DAVID  
RE

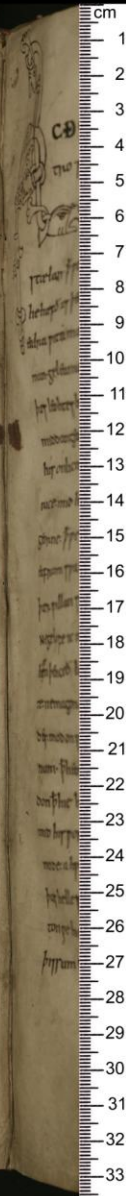
a saph

EMU

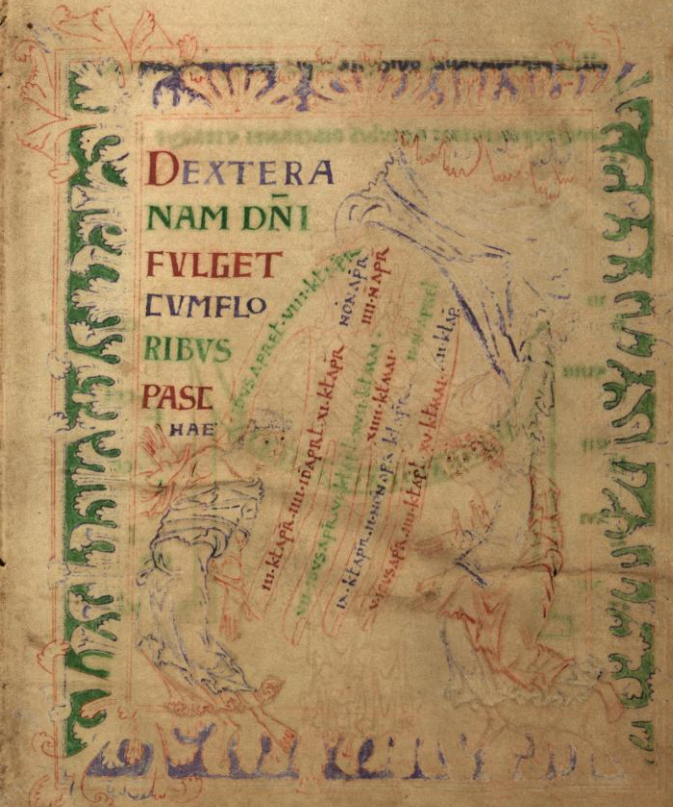
ETHAN & IDITHUN

re ne ge  
quinn  
anleay  
mpiori  
culpa  
caroru  
rede  
the dro

20.



49



cm  
1  
2  
3  
4  
5  
6  
7  
8  
9  
10  
11  
12  
13  
14  
15  
16  
17  
18  
19  
20  
21  
22  
23  
24  
25  
26  
27  
28  
29  
30  
31  
32  
33

x

11.

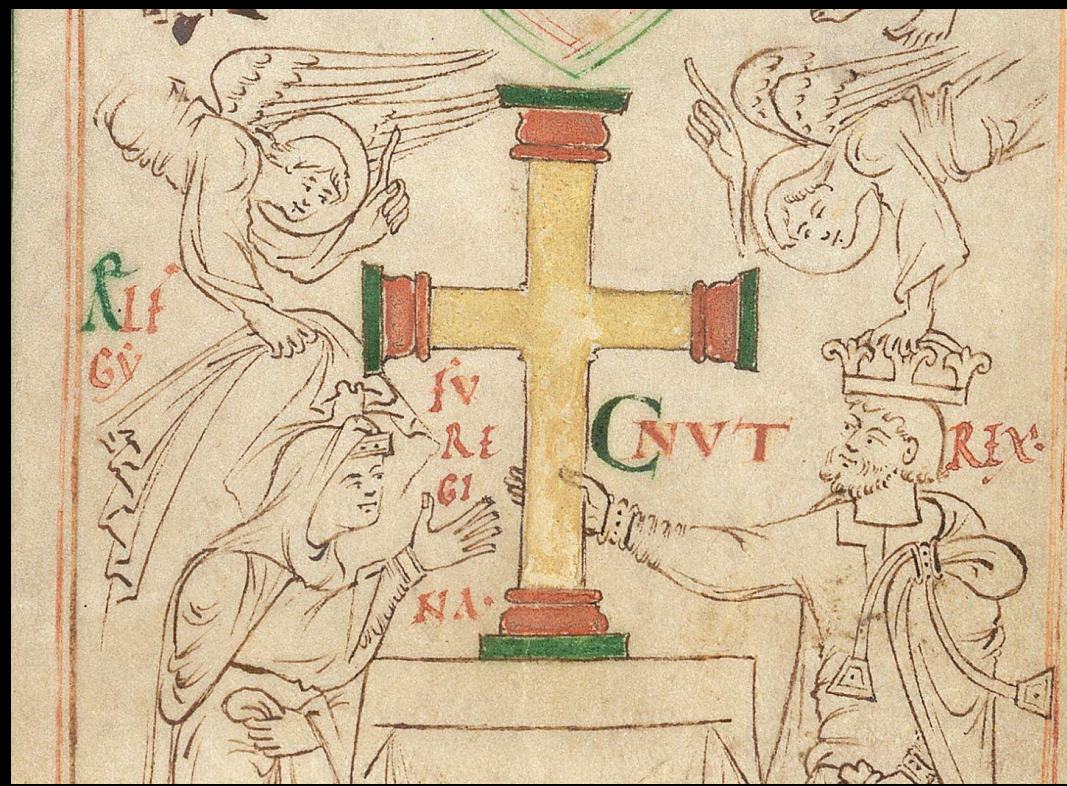
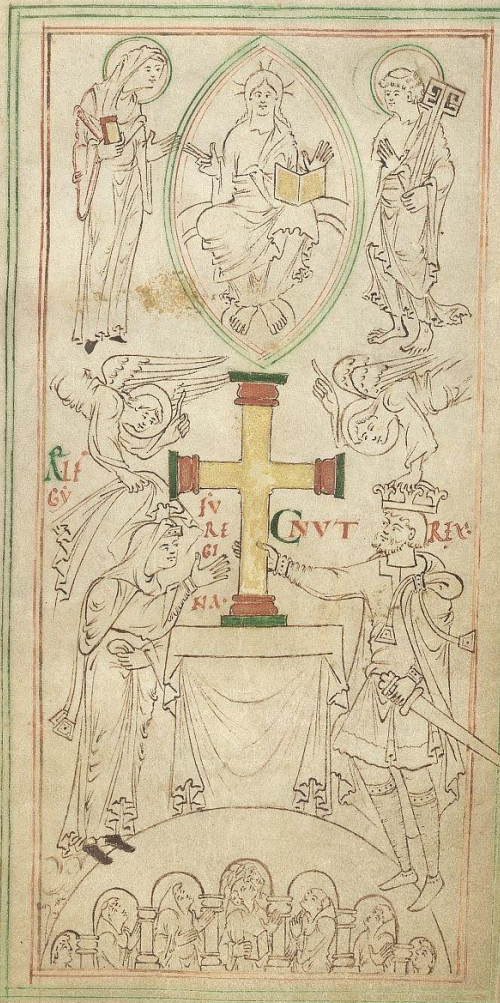
þæt cū þode 7 cypþid ure. hi 7 þōnca plice. 7 hi  
pæt tina blæd. mīna gefcūta. nō þīna þaig  
7 eo. god 7 sūtelic. siþtha gefylles.



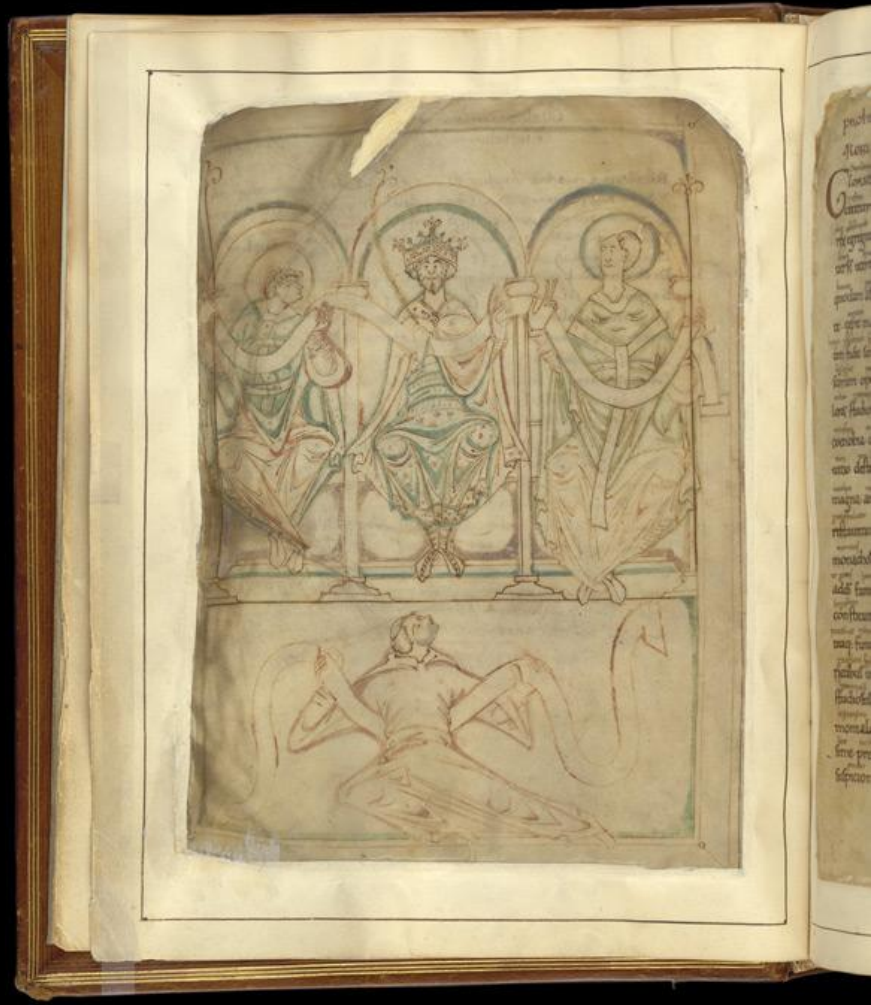
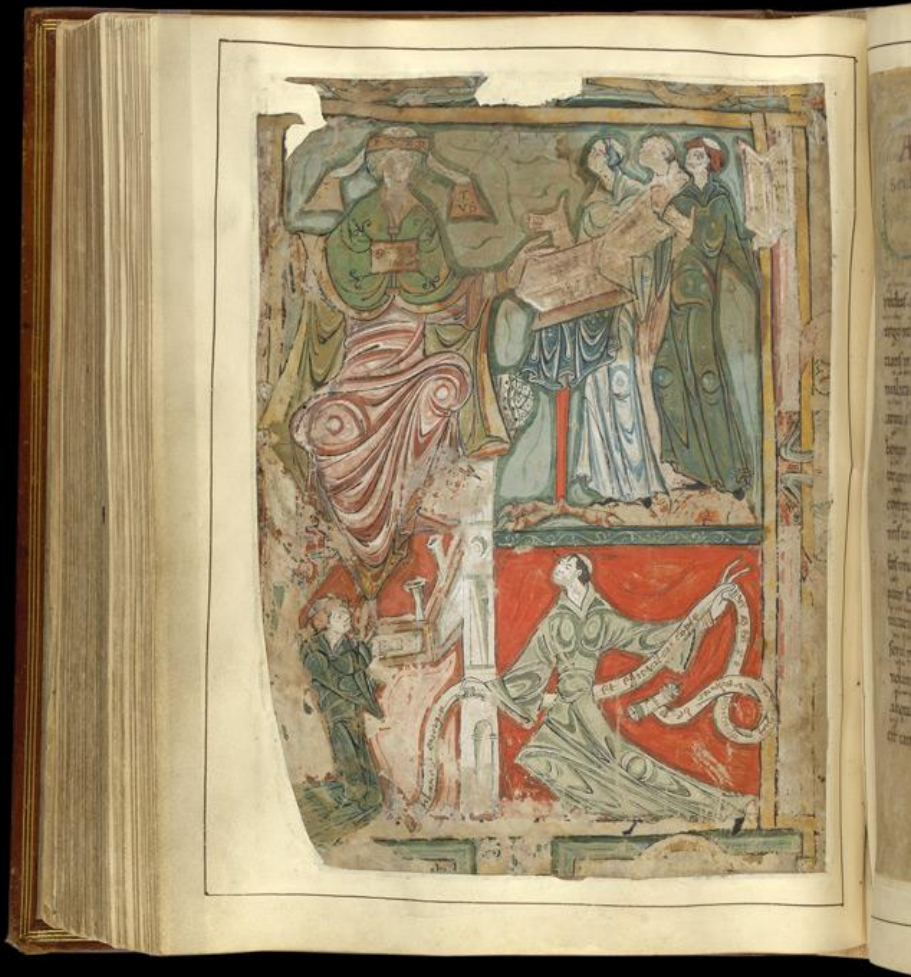
repleri . ut cum eis caelestis spon  
si thalamum ualeatis ingre  
di . **q**uod ipse .



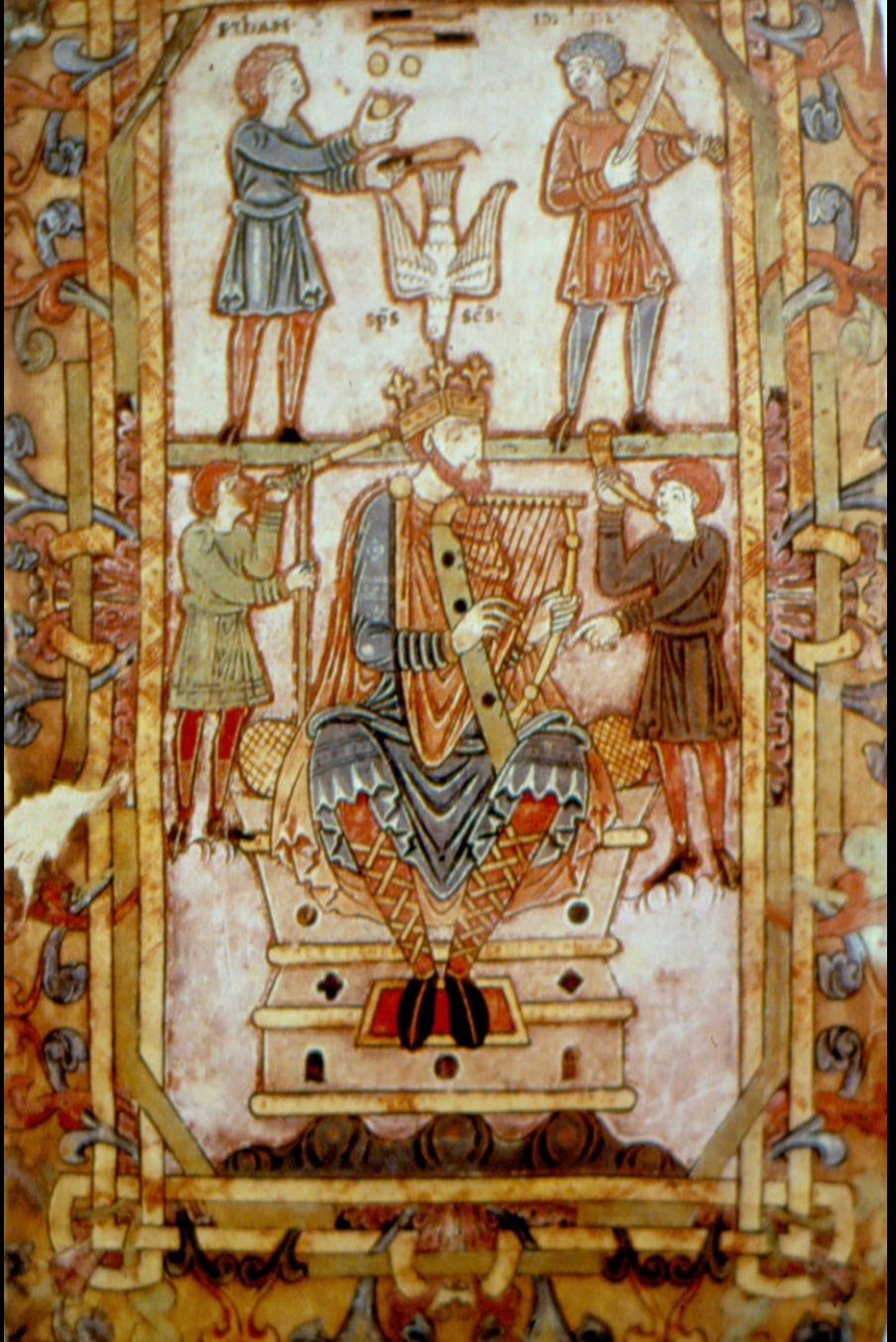












his q̄seruant testam̄ti eius;  
 Et memores sunt mandatorū  
 ipsius ad faciendum ea

potentes uirtute facien-  
 tes uerbu illius ad audien-  
 da uocē sermonum eius;

**B**enedicite dño oia opa ei  
 in om̄i loco dominationes  
 ei benedic anima mea dño.



**B**ENEDIC ANIMA  
 mea dño. dñe dñs meus  
 magnificatus es uehementer;  
 Confessionem et decorum

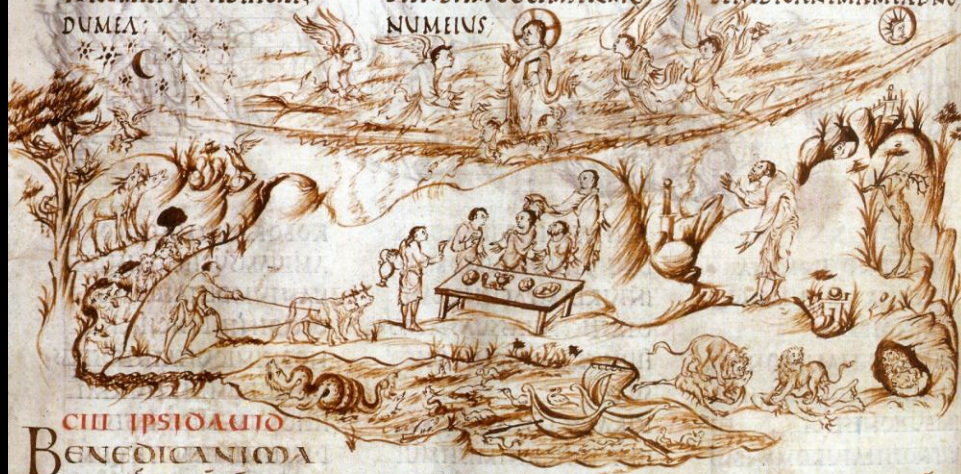
tuum. qui ambulat super  
 pennas uentozum  
 qui facit angelos tuos sp̄s

stabunt aquae  
**A**bi increpatione tua fugi-  
 ent: a uoce tonitru tui  
 formidabunt.

TORUM IPSIUS AD FACIEN-  
 DUM EA:

DIENDAM UOCESERMO-  
 NUM EIUS

BENEDIC ANIMA MEADÑO



**B**ENEDIC ANIMA  
 MEADÑO DÑE DÑS MEUS  
 MAGNIFICATUS ES UEHE-  
 MENTER.  
 CONFESSIIONEM ET DECOREM  
 INDUISEI. AMICTUS LUMI-

PER PENNAS UENTORUM  
**Q**UI FACIS ANGELOS TUOS SP̄S  
 ET MINISTROS TUOS. IGNEM  
 URENTEM.

**Q**UI UINDA STILTER. B. AM. C.

**A**BI INCREPATIONE TUA FUGI-  
 ENT. A UOCETONITRUITUI  
 FORMIDABUNT;  
**A**SCENDUNT MONTES ET DES-  
 CENDUNT IN CAMPIS. IN LOCO



HIC EST NAZARE  
N IHC REX IUDORUM



**B**ENE  
FACTVS  
VIR QVINON  
ABIIT IN CON  
SILIO IMPIORVM

HIC EST NAZARE  
NIHC REX IUDORUM



LIBRARY  
HSLIBRB



LIBRARY  
HSLIBRB