

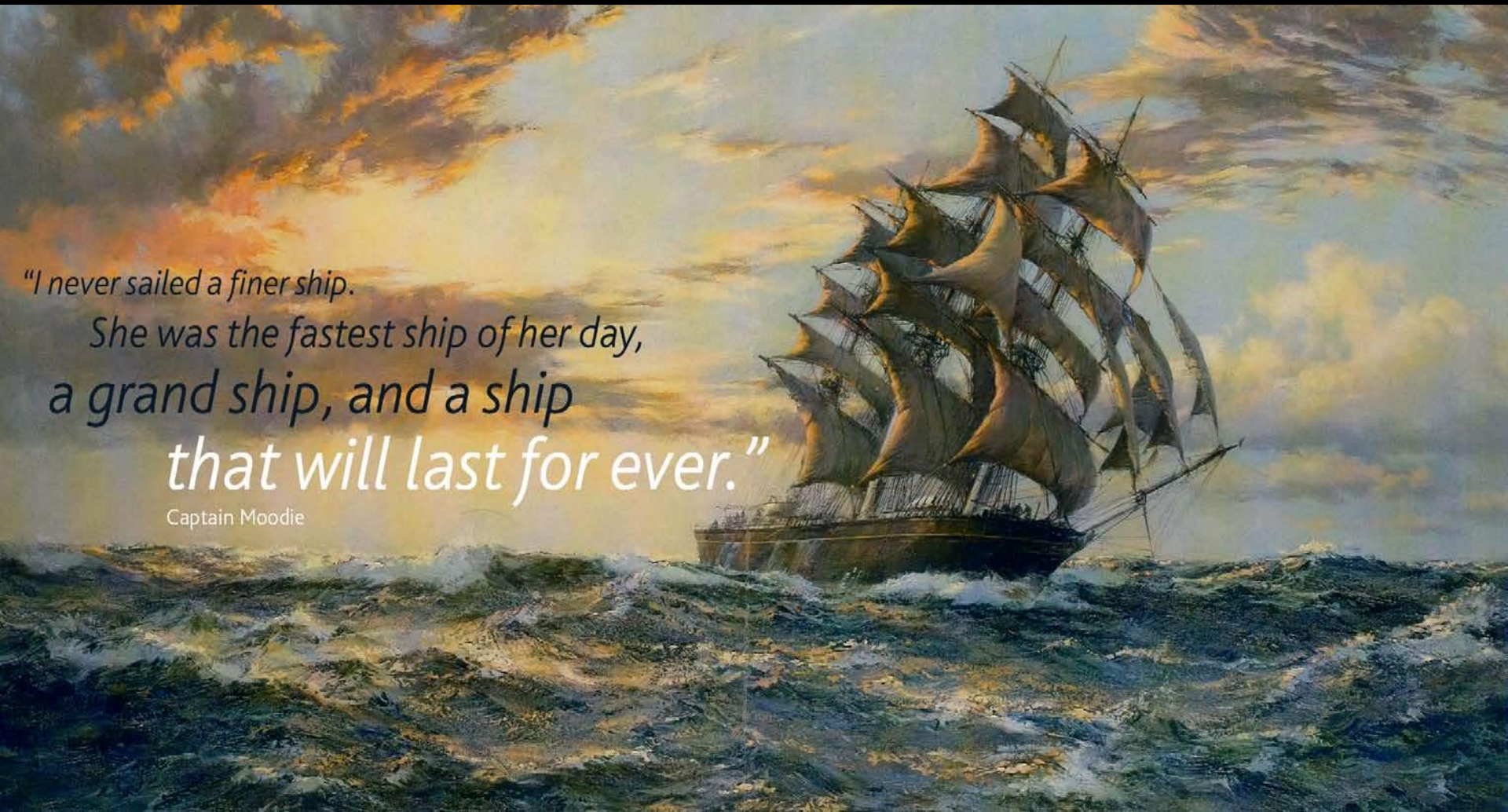




# Why conserve Cutty Sark?

Richard Doughty





*"I never sailed a finer ship.*

*She was the fastest ship of her day,  
a grand ship, and a ship  
that will last for ever."*

Captain Moodie









©www.webbaviation.co.uk  
2008





请

GET

飞

ON

翔

BOARD



shanghai-london since 1870

CUTTY SARK



shanghai-london since 1870











## A FAMOUS CLIPPER.

---

CUTTY SARK PURCHASED  
FOR THE NATION

---

TO BE MOORED AT FALMOUTH

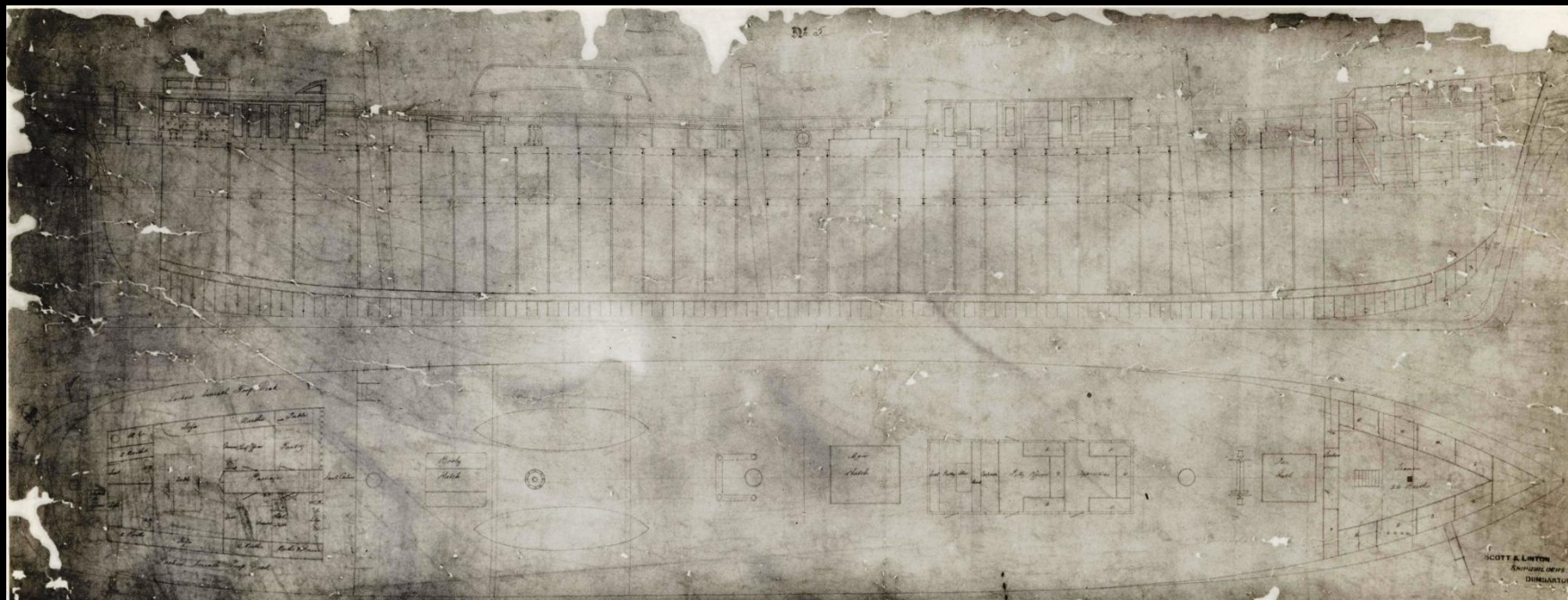
---

Through the generosity of Capt. and Mrs. Dawman, of Trevisson, Flushing, near Falmouth, there has been preserved to the nation one of the most famous racing clipper sailing ships whose bows have ever cleaved the waters of the seven seas—the Cutty Sark, the *beau ideal* of all good sailormen in the latter part of the last century. The Cutty Sark holds a record for racing passages in her voyages when the China-tea trade was in its heyday, and carried a veritable sea of canvas, enabling her to slip through the water at a great speed.



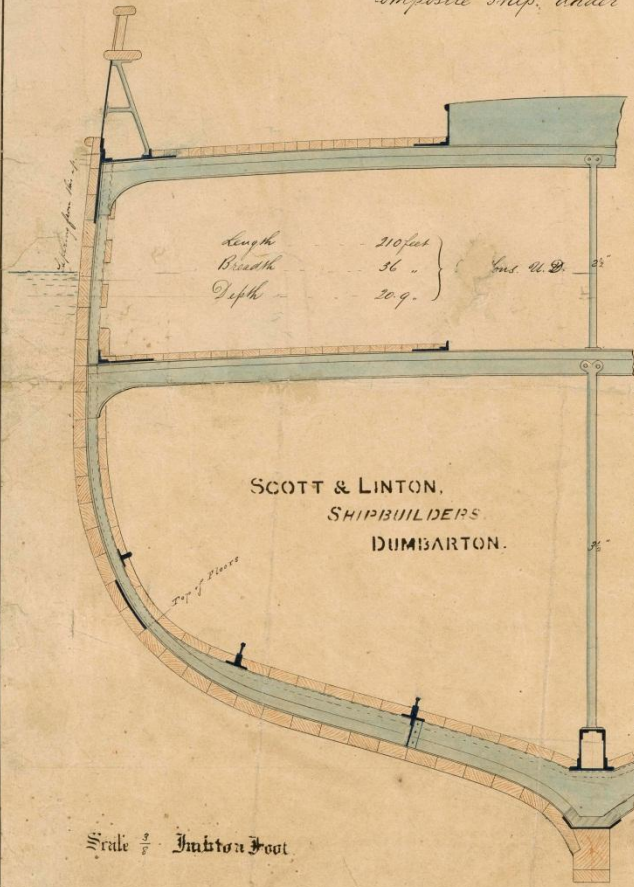






No 5

Composite Ship, Under Special Survey.



Length 210 feet  
 Breadth 36 "  
 Depth 20.9 "

Int. U. S.

SCOTT & LINTON,  
 SHIPBUILDERS  
 DUMBARTON.

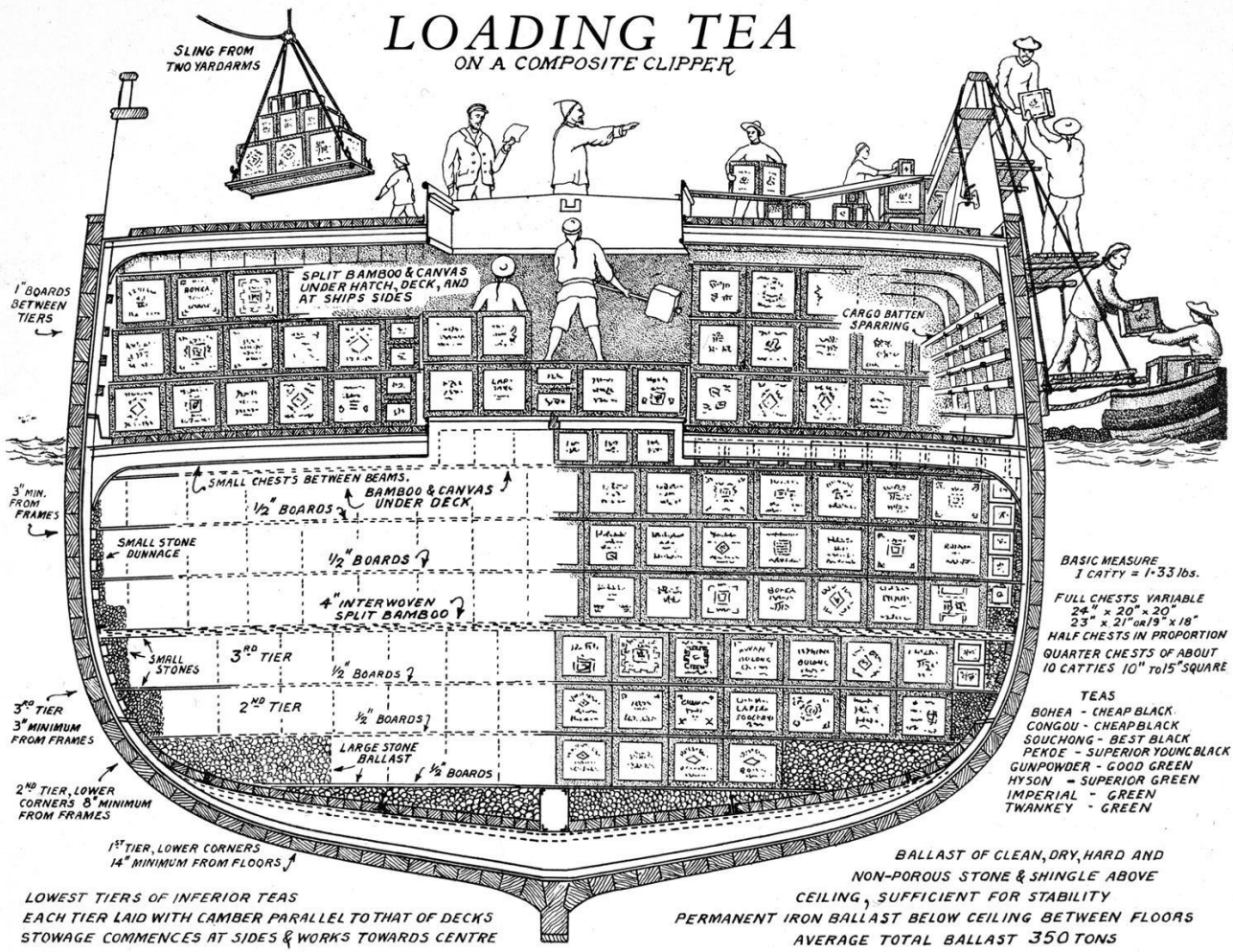
Scale  $\frac{3}{8}$  Inch to a Foot

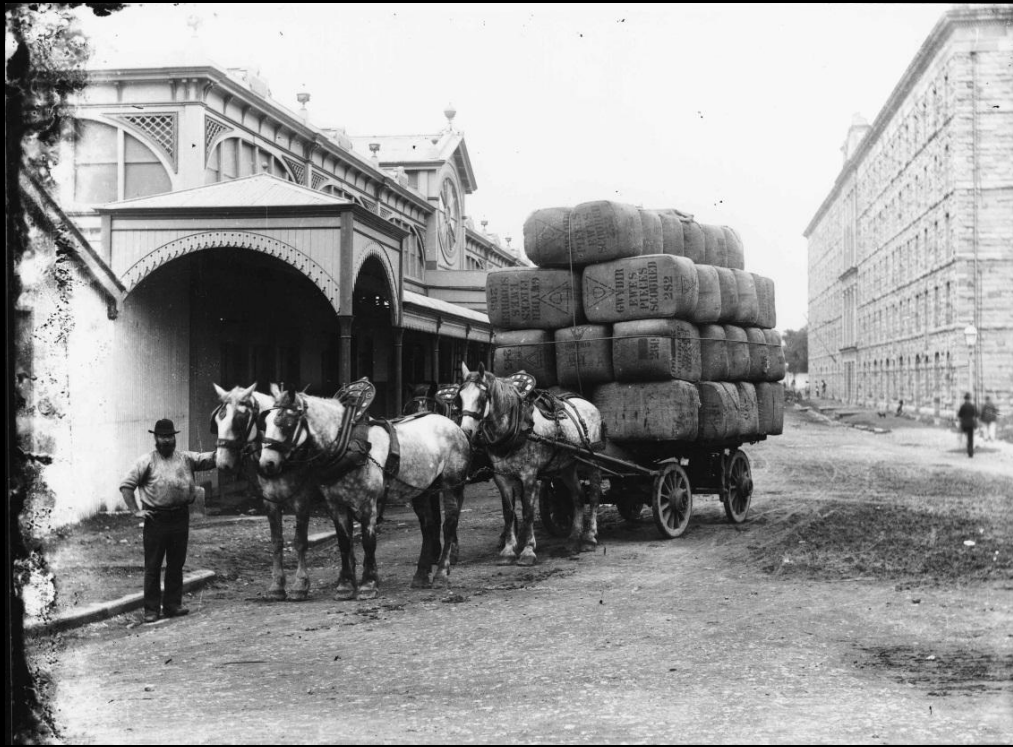
- Stem of East India Lark 20" x 15"
- Stem Post " 14" x 15"
- Kiel of American Rock Elm 17" x 15"
- Frames angle iron 3 1/2" x 1 1/2" x 3/4"
- Lower frames 3 1/2" x 3" x 3/4"
- Main Deck Beams both iron 9" x 7" angles 3 1/2" x 3 1/2" x 3/4"
- Lower 10" x 7" angles 4" x 3 1/2" x 3/4"
- Main Deck Stringer 30" x 7"
- Lower 22 1/2" x 7"
- Main Deck Side 18 1/2" x 7"
- Lower " 15" x 7"
- Sheer strake 35" x 7"
- Transverse plate of Box Keelson 17 1/2" x 8"
- Side plates of Box Keelson 16" x 8"
- Top 10 1/2" x 8"
- Foundation plates angles 3 1/2" x 1 1/2" x 3/4"
- Top plate 5" x 3" x 3/4"
- Horizontal plate Keelson 14" x 8"
- Keelson Ball iron 10" x 8"
- angles 5" x 1" x 3/4"
- Bilge Keelson both iron 10" x 7"
- angle 5" x 4" x 3/4"
- Stringer " 5" x 4" x 3/4"
- Main Deck Stringer angle iron 5" x 1 1/2" x 3/4"
- Lower 5" x 4" x 3/4"
- Floors 2 1/2" x 7"
- Main Deck Lark 5" x 3 1/2"
- Lower yellow pine 6" x 3"
- Planking Elm up to 8 feet 9 inches from top of keel 6 inch  
 above that of Lark Elm, tapering to 1 1/2"
- Bilge Plate 23 1/2" x 7"
- Keel 5" x 8"

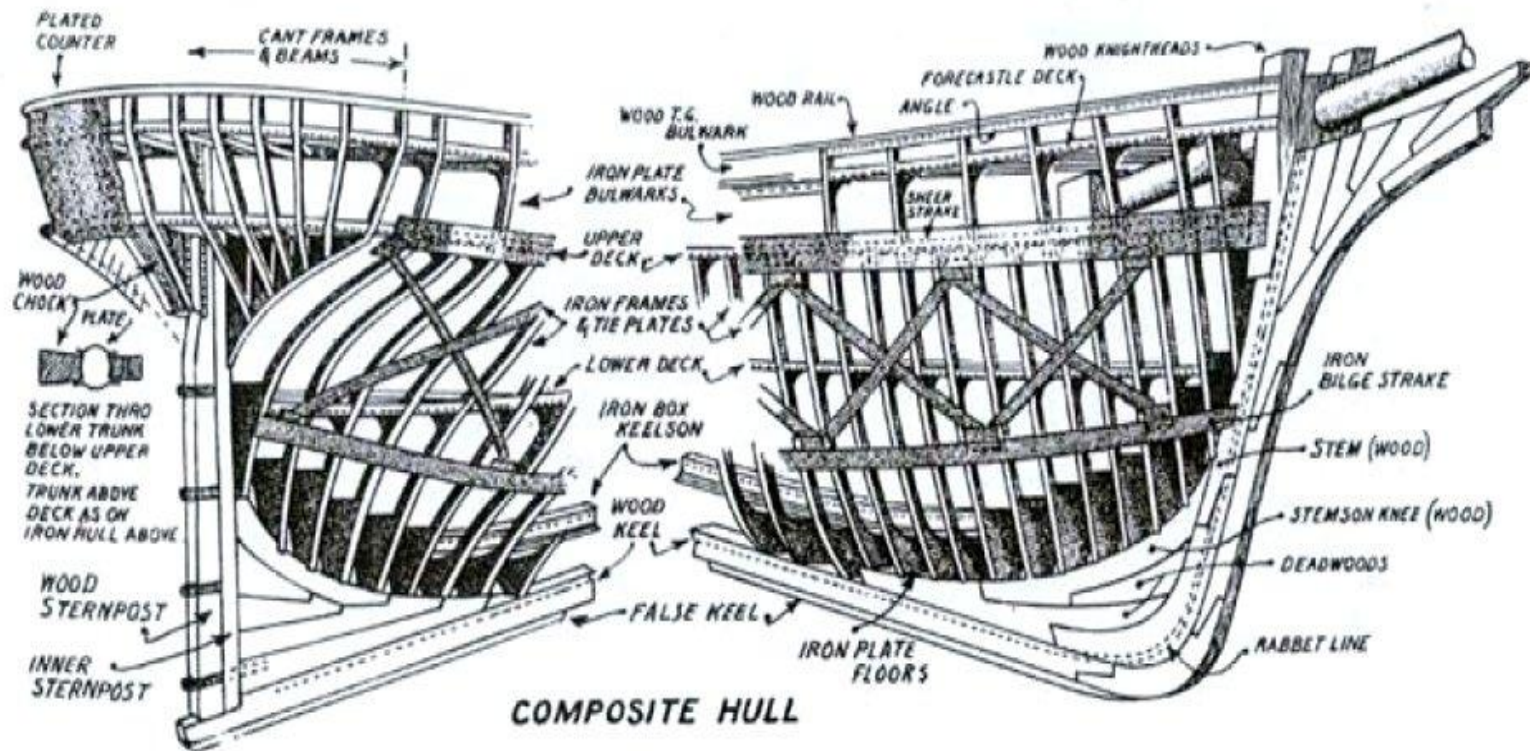




# LOADING TEA ON A COMPOSITE CLIPPER











DRAFTING SHEEP.  
257. Kerry  
Sydney.











