

Page 117

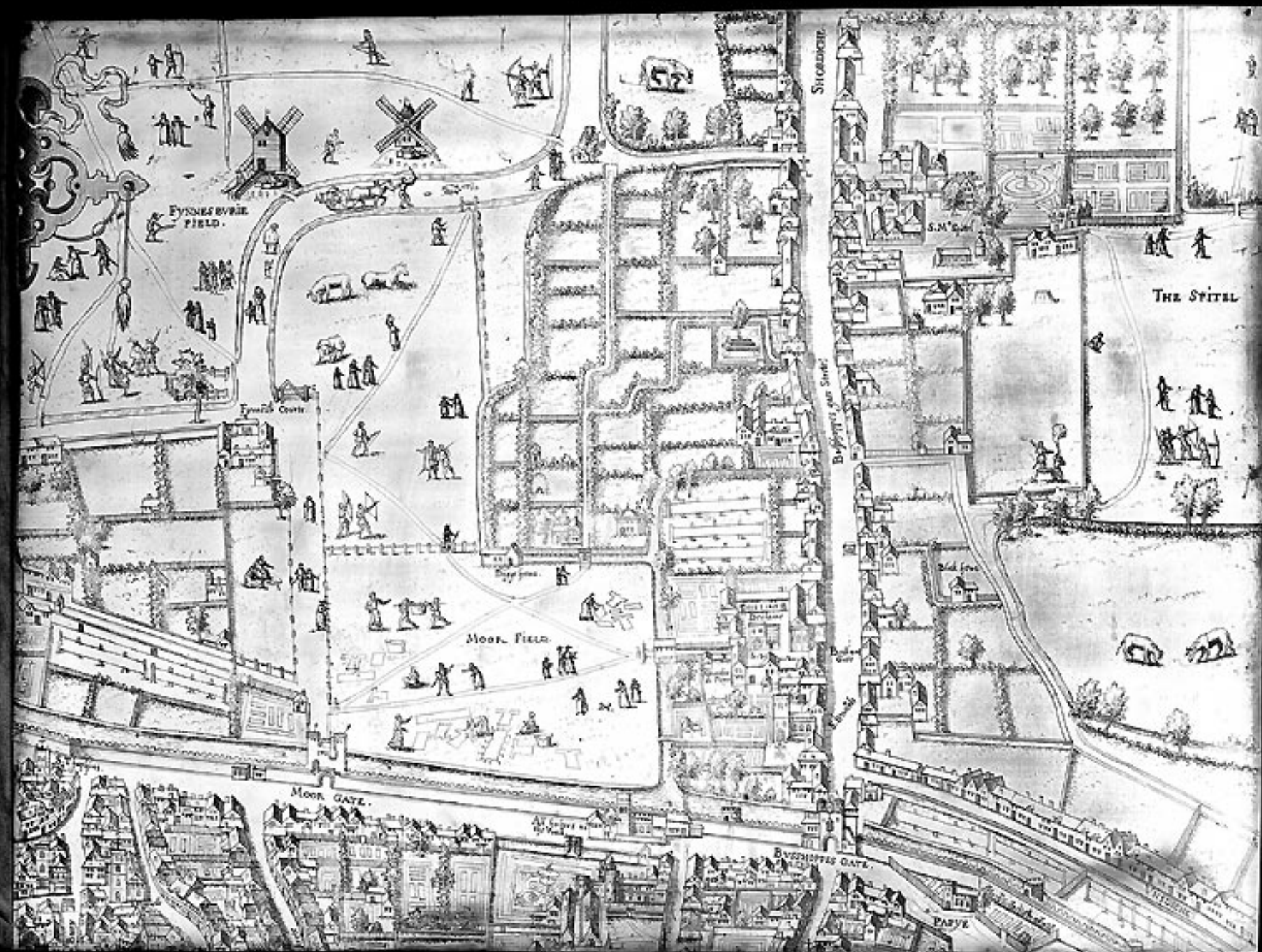
*A PLAN of the CITY and LIBERTIES of LONDON after the Dreadful Conflagration in the Year 1666.
The Blank Part wherof represents the Ruins and Extent of the Fire; & the Perspective that left Standing.*







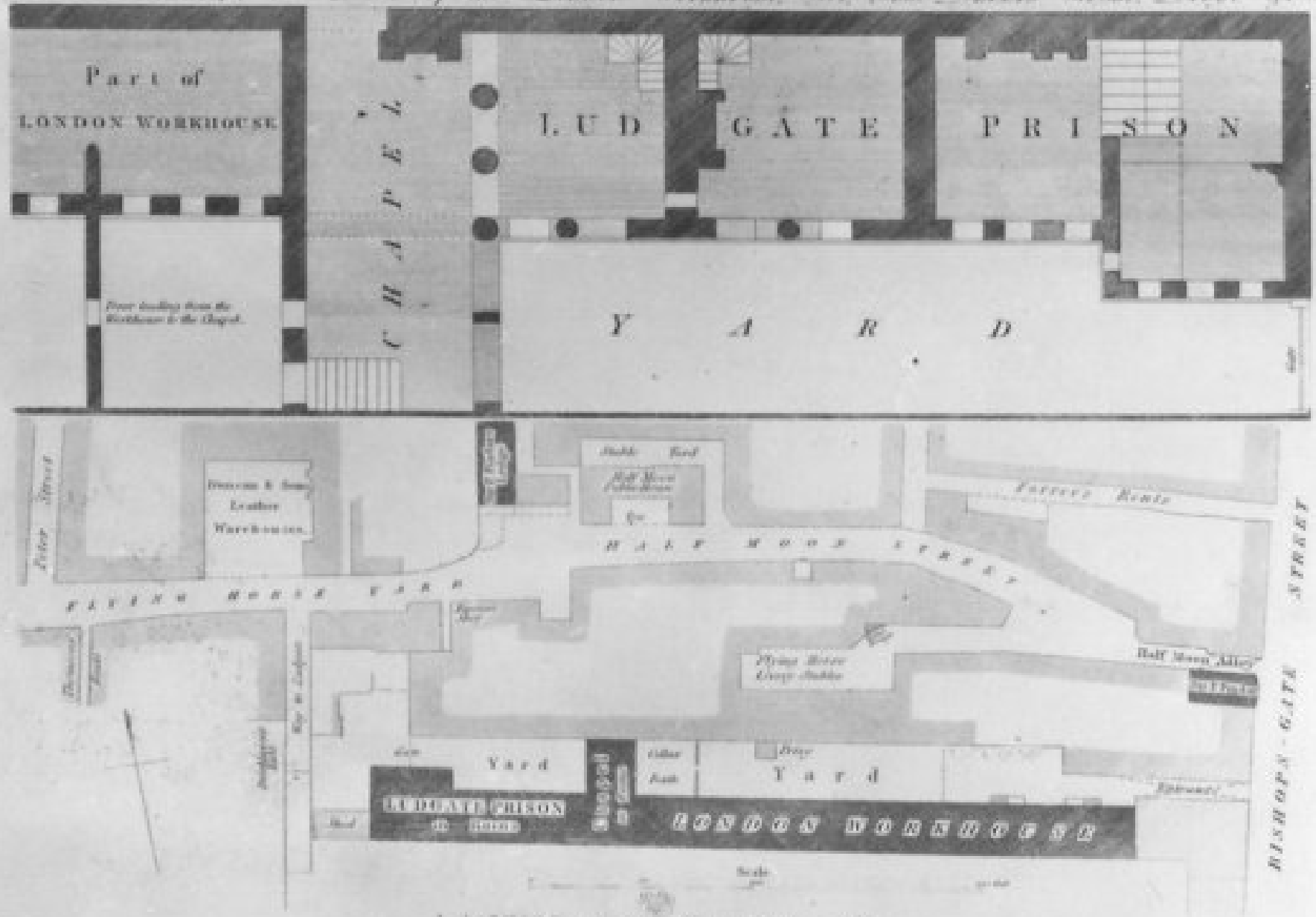








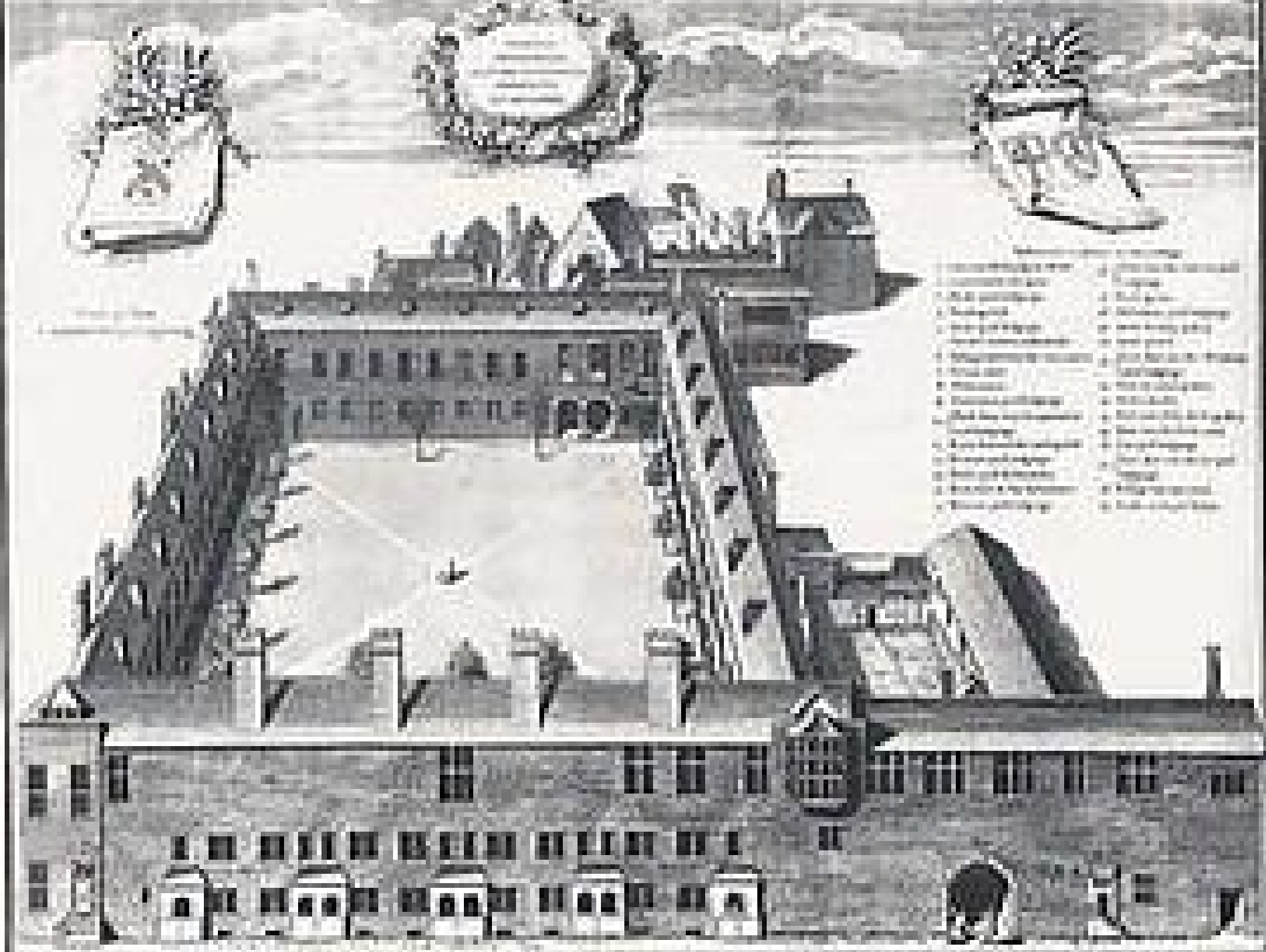
LUDGATE PRISON, with a Plan of the Leaden Wallhouse, Sir Paul Pindar's House, &c.



London, Published & Sold by Robert Williams, 17, St. Paul's Church-yard.

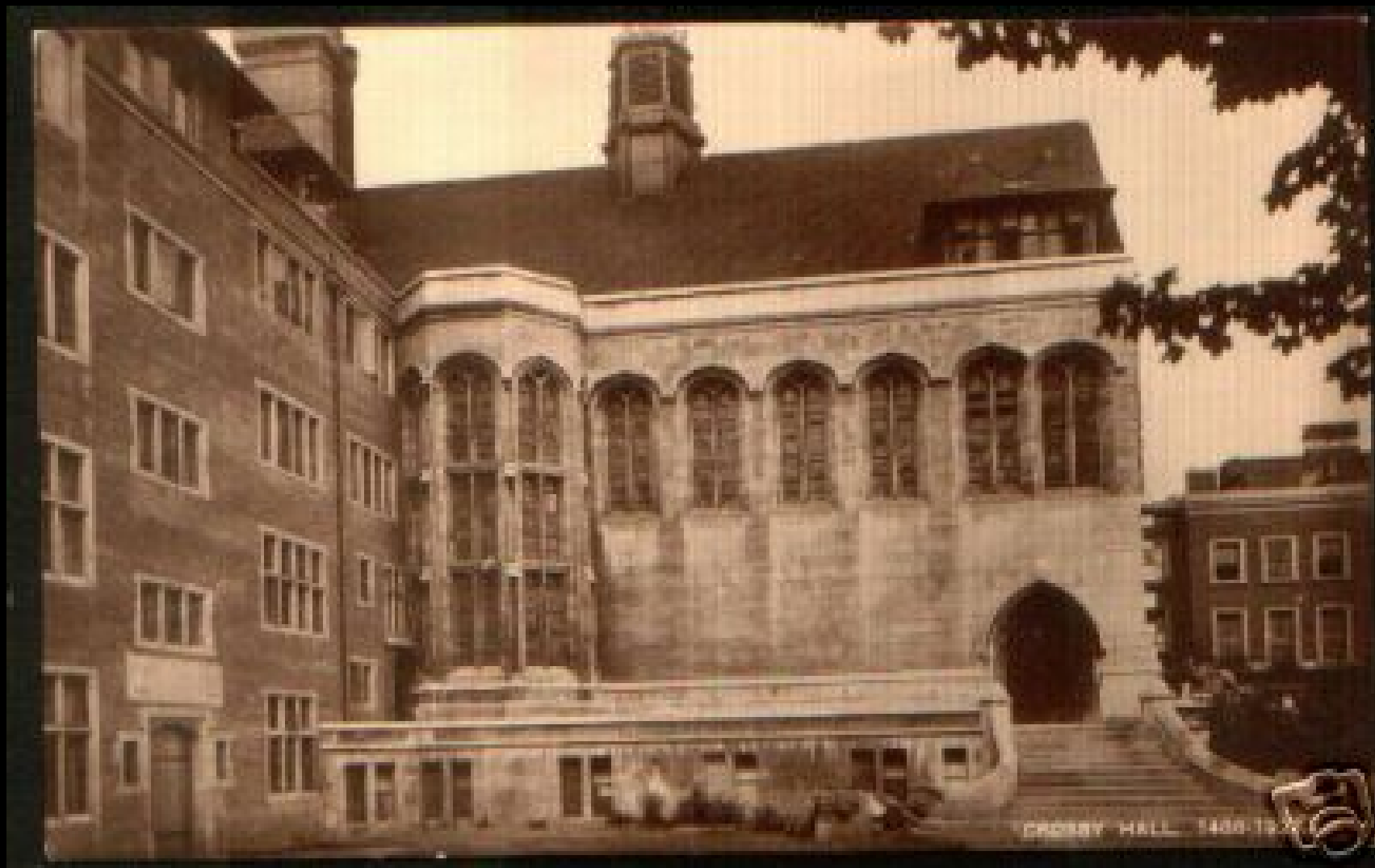






1. The main building
 2. The central tower
 3. The large chimney
 4. The small chimney
 5. The large haystack
 6. The small haystack
 7. The large pile of material
 8. The small pile of material
 9. The large pile of material
 10. The small pile of material
 11. The large pile of material
 12. The small pile of material
 13. The large pile of material
 14. The small pile of material
 15. The large pile of material
 16. The small pile of material
 17. The large pile of material
 18. The small pile of material
 19. The large pile of material
 20. The small pile of material
 21. The large pile of material
 22. The small pile of material
 23. The large pile of material
 24. The small pile of material
 25. The large pile of material
 26. The small pile of material
 27. The large pile of material
 28. The small pile of material
 29. The large pile of material
 30. The small pile of material
 31. The large pile of material
 32. The small pile of material
 33. The large pile of material
 34. The small pile of material
 35. The large pile of material
 36. The small pile of material
 37. The large pile of material
 38. The small pile of material
 39. The large pile of material
 40. The small pile of material
 41. The large pile of material
 42. The small pile of material
 43. The large pile of material
 44. The small pile of material
 45. The large pile of material
 46. The small pile of material
 47. The large pile of material
 48. The small pile of material
 49. The large pile of material
 50. The small pile of material
 51. The large pile of material
 52. The small pile of material
 53. The large pile of material
 54. The small pile of material
 55. The large pile of material
 56. The small pile of material
 57. The large pile of material
 58. The small pile of material
 59. The large pile of material
 60. The small pile of material
 61. The large pile of material
 62. The small pile of material
 63. The large pile of material
 64. The small pile of material
 65. The large pile of material
 66. The small pile of material
 67. The large pile of material
 68. The small pile of material
 69. The large pile of material
 70. The small pile of material
 71. The large pile of material
 72. The small pile of material
 73. The large pile of material
 74. The small pile of material
 75. The large pile of material
 76. The small pile of material
 77. The large pile of material
 78. The small pile of material
 79. The large pile of material
 80. The small pile of material
 81. The large pile of material
 82. The small pile of material
 83. The large pile of material
 84. The small pile of material
 85. The large pile of material
 86. The small pile of material
 87. The large pile of material
 88. The small pile of material
 89. The large pile of material
 90. The small pile of material
 91. The large pile of material
 92. The small pile of material
 93. The large pile of material
 94. The small pile of material
 95. The large pile of material
 96. The small pile of material
 97. The large pile of material
 98. The small pile of material
 99. The large pile of material
 100. The small pile of material





CROSBY HALL 1800-19



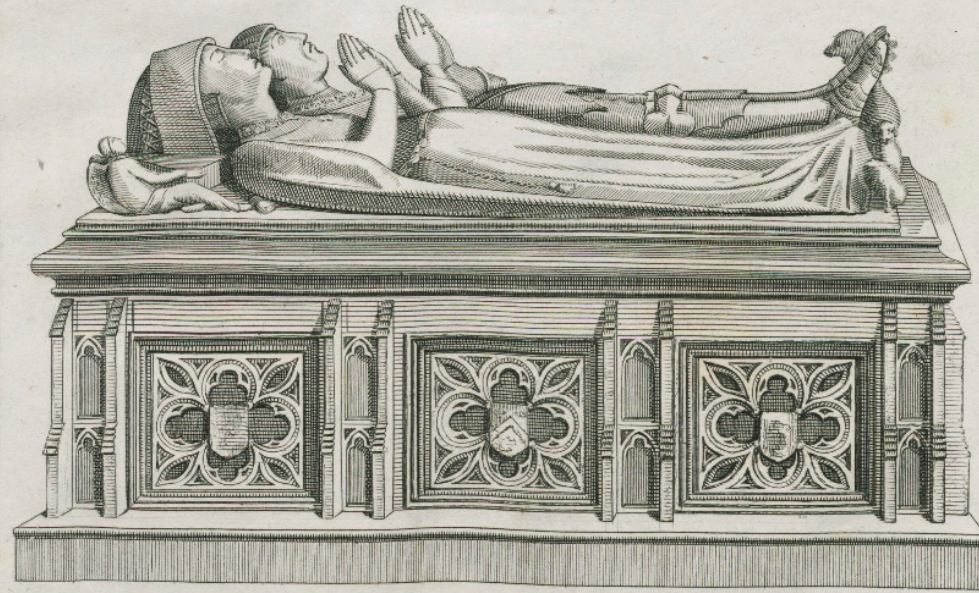




*Orate pro animabus Johannis Crosby Militis Ald. atque tempore vite
Maior is Staple ville Caleis; & Agnetis uxoris sue, ac Thome, Richardi
Johannis, Johannis, Margarete, & Johanne liberorum eiusdem
Johannis Crosby militis ille obiit, 1475 & illa 1466 quorum animabus
propitiatur Deus.*

*This Crosby was Sheriffe of London. the yeare 1470. He was the
Builder of Crosby house. He gave five hundred Markes towards the
reforming of this Church, which was bestowed (saith Stow) with the
better. As appeareth by his Armes both in the Stone worke, roose of
timber, and glasing. it is a fable said of him, to be named Crosby, of
being found by a Crofse.*

Weever's Funerall Monuments, p. 421.



SIR JOHN CROSBY'S MONUMENT.

in the Church of S. Helen, Bishopsgate Street.

*See Strype's Stow, p. 451. & 452. Maitland's London, p. 800. Pennant's London, 3. Ed. p. 473. & 476. & Gough's Camden, p. 51. Vol. 2.
Published June 1794. by N. Smith Mays Buildings, S. Martins Lane.*















EDWARD III



SIR JOHN CROSBY'S MONUMENT.

in the Church of S^t Helen, Bishopsgate Street.

See Styrer's Stow, p. 431. & 435. Maitland's London, p. 500. Pinnant's London, 3. Edit. p. 473. & 476. & Gough's Camden, p. 51. Vol. 2.

Published June 1794. by N. Smith Mays Buildings, S^t Martins Lane.

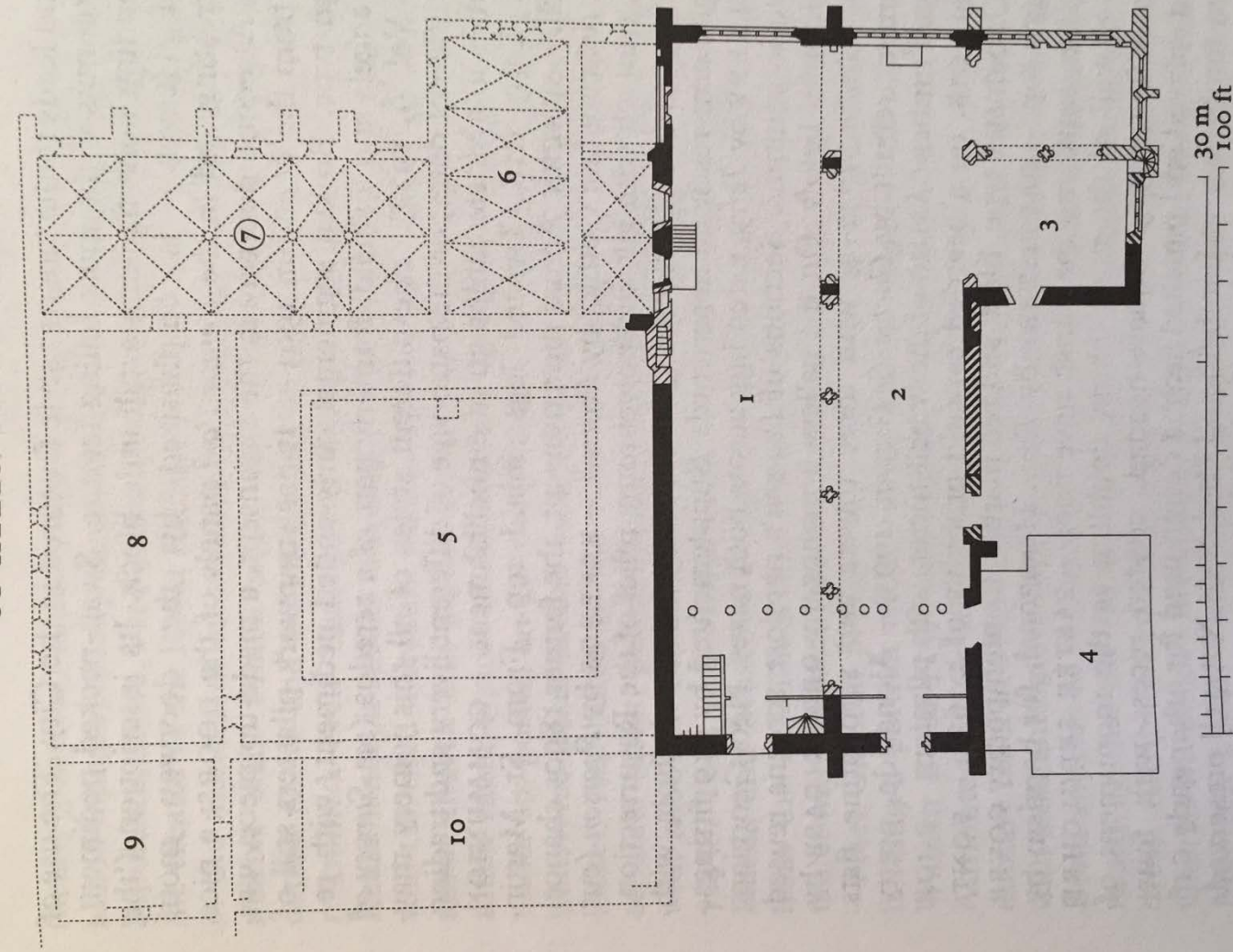


John Sutton Almoner



almoner Sutton







CONJECTURAL GENERAL PLAN

Walls of original building which
existed above ground in 1834
Portion of original walls with
conjectured openings shown
Portion of original walls built
subsequently to main building
Walls of buildings shown by
Crosby & Morgan's map, probably
later additions to Crosby Place
Walls of original building as
shown by Wilkison, Blackburn
and Spence.



(1) SITE - OF - 5th JOHN SPENCER'S
WAREHOUSE NOW THE JEWISH
SYNAGOGUE

BACK GATE
*Now under house in
Crosby Square*

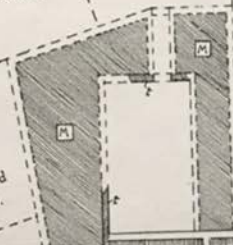
(2) POSITION - OF
HOUSE - OCCUPIED BY
JULIAN FRANCIS

Site of Gardens

CLOSE
OF
ST. HELEN'S
PRIORY

1st Tenement in
the occupation
of Sir John Crosby

1st Tenement
formerly occupied
by Robert Smith



*Gatesway as
with Delfy
over*

DISHOPSGATE STREET

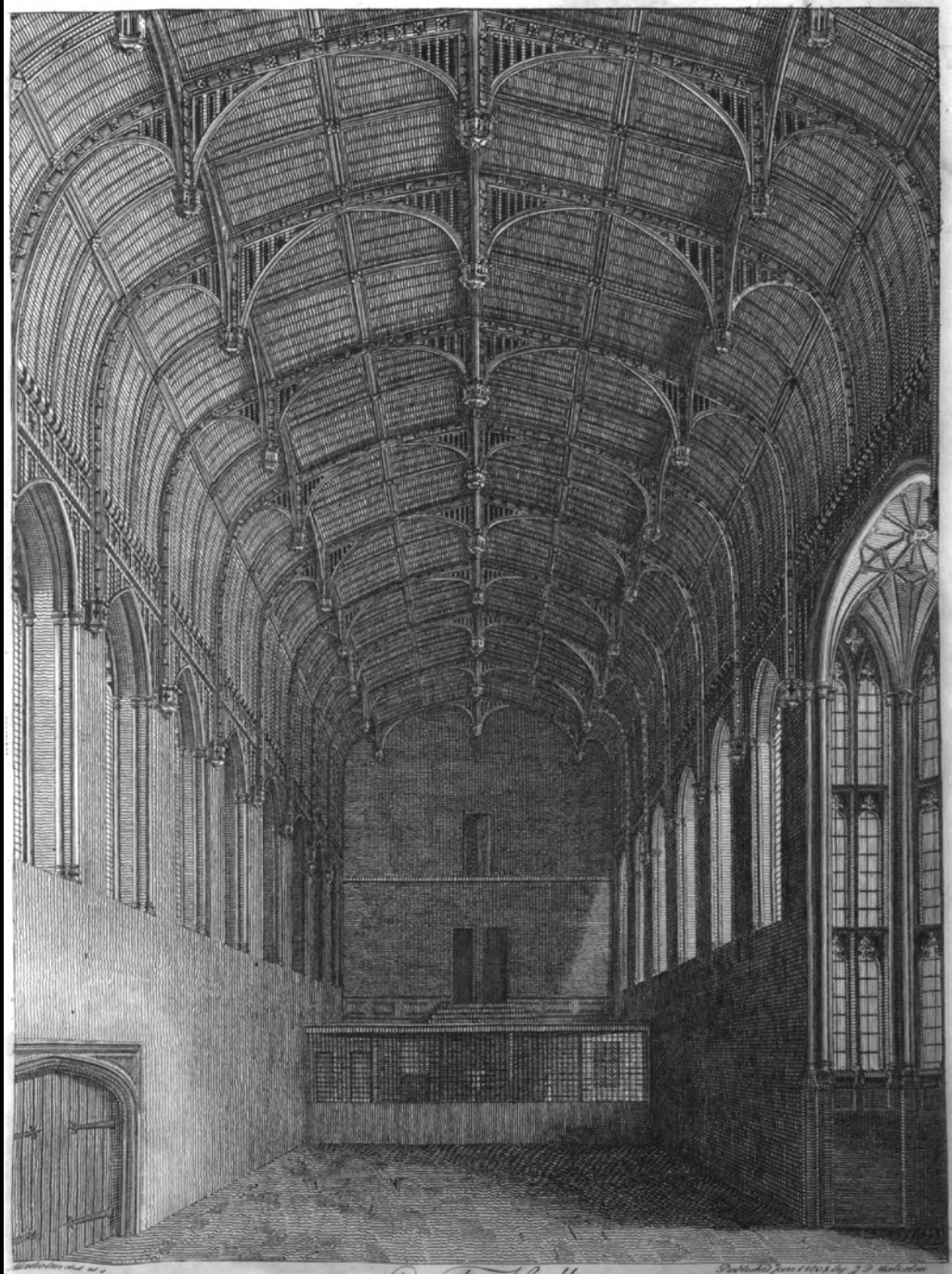
Walter H. Godfrey
Jan 21 1882





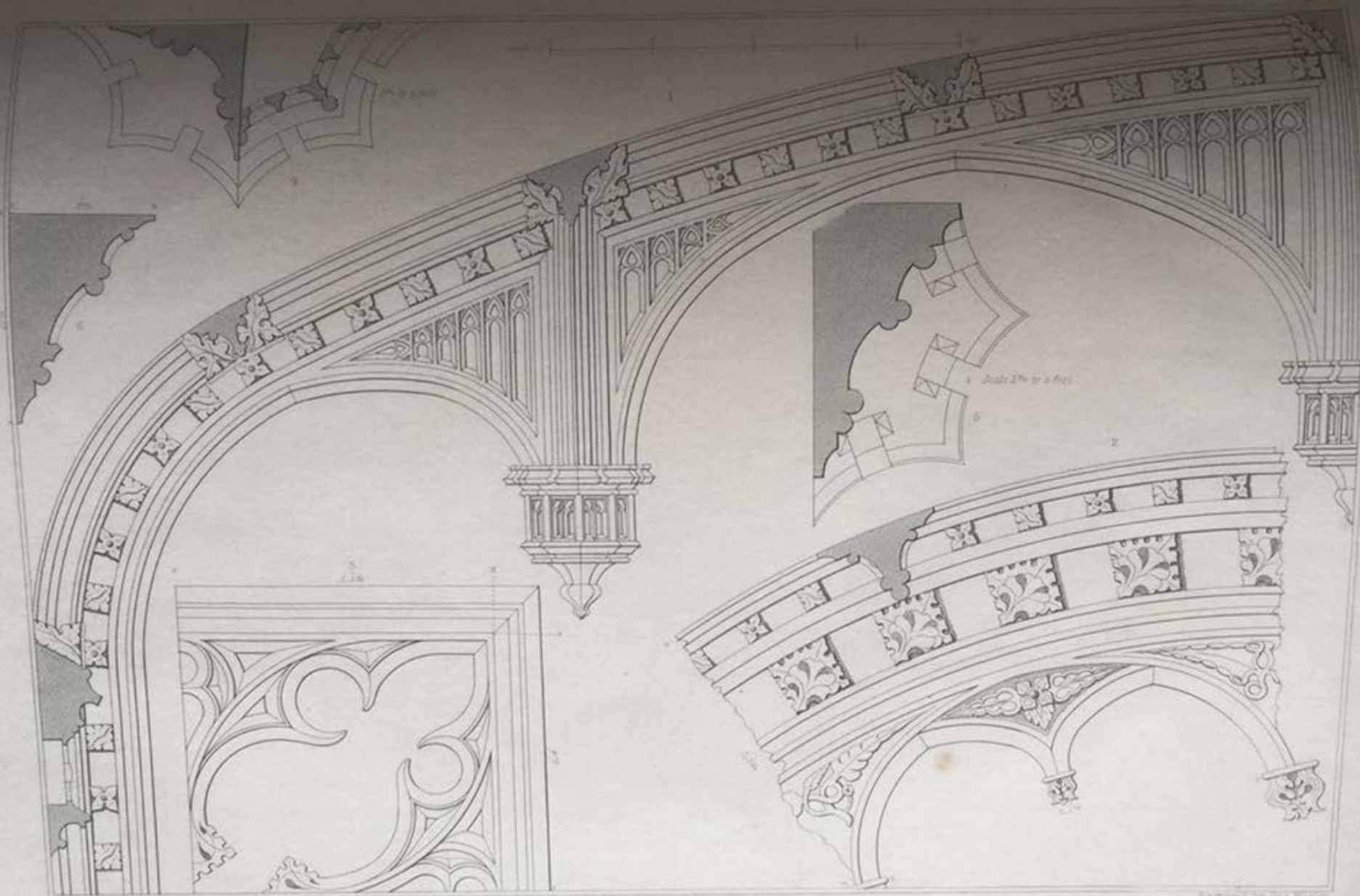
South-West View of the principal Quadrangle or Outer Court.

(From an engraving by S. Rawle, after Nash)



Crosby Hall

Engraved from 1853 by J. P. Macdonald



Designed & Drawn by H.J. Harrison, Archt.

Details of Roofs, &c.

Engraved by Geo. Wallis



Designed by J. C. Green, Esq. and executed by J. C. Green.

Interior of Coventry Hall.

CONJECTURAL GENERAL PLAN

Walls of original building which
existed above ground in 1834.
Portion of original walls with
conjectured openings shown.
Portion of original walls built
subsequently to main building.
Walls of buildings shown by
Crosby & Morgan's map, probably
later additions to Crosby Place.
Walls of original building as
shown by Wilkison, Blackburn
and Spence.



(1) SITE - OF - 5th JOHN SPENCER'S
WAREHOUSE NOW THE JEWISH
SYNAGOGUE

BACK GATE
*Now under house in
Crosby Square*

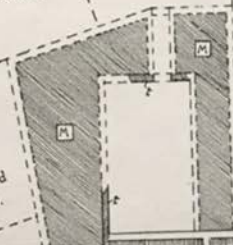
(2) POSITION - OF
HOUSE - OCCUPIED BY
JULIAN FRANCIS

Site of Gardens

CLOSE
OF
ST. HELEN'S
PRIORY

1st Tenement in
the occupation
of Sir John Crosby

1st Tenement
formerly occupied
by Robert Smith



SIX TENEMENTS

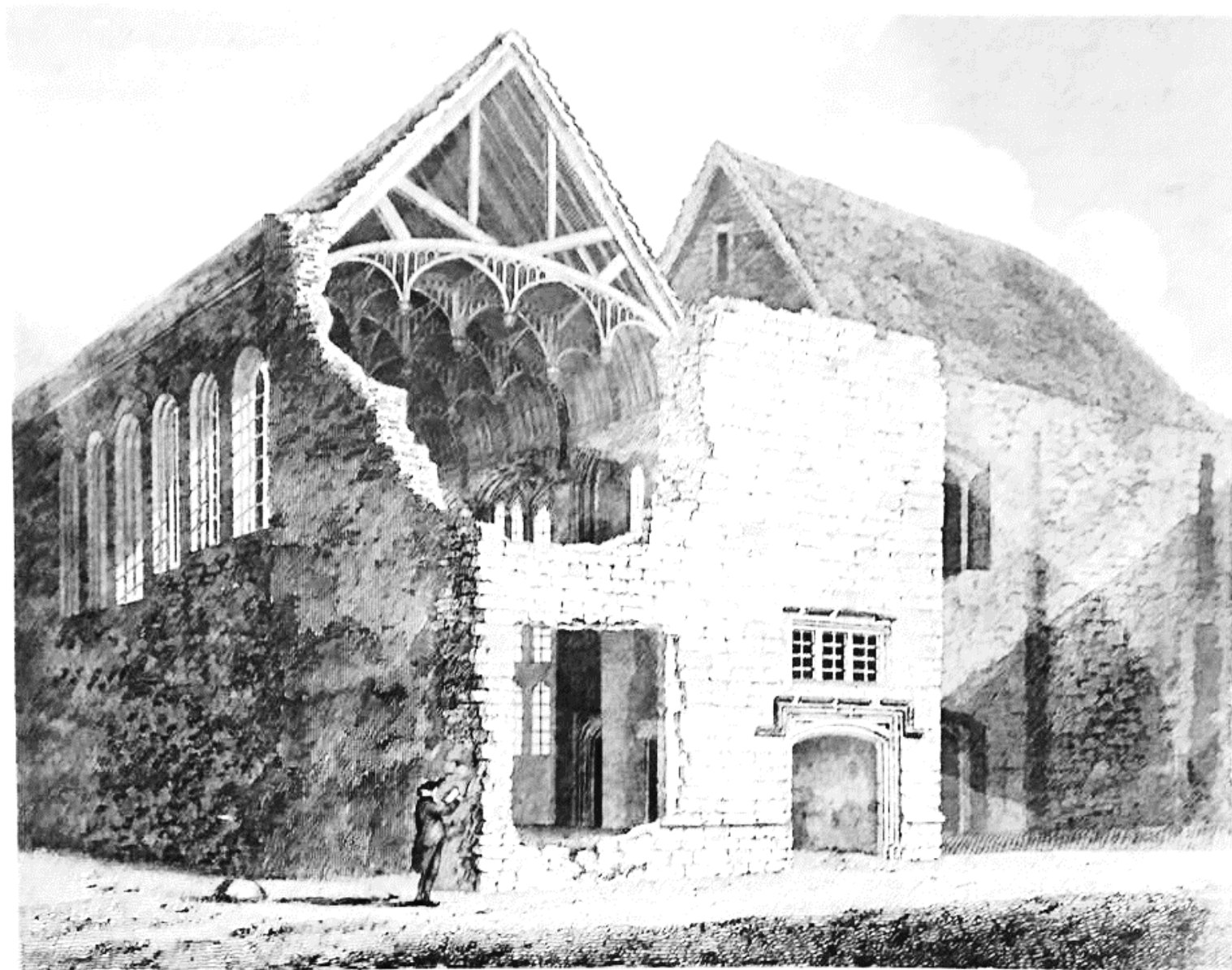
OUTER COURT

*Gateway as
with Delfy
over*

BISHOPSGATE

STREET

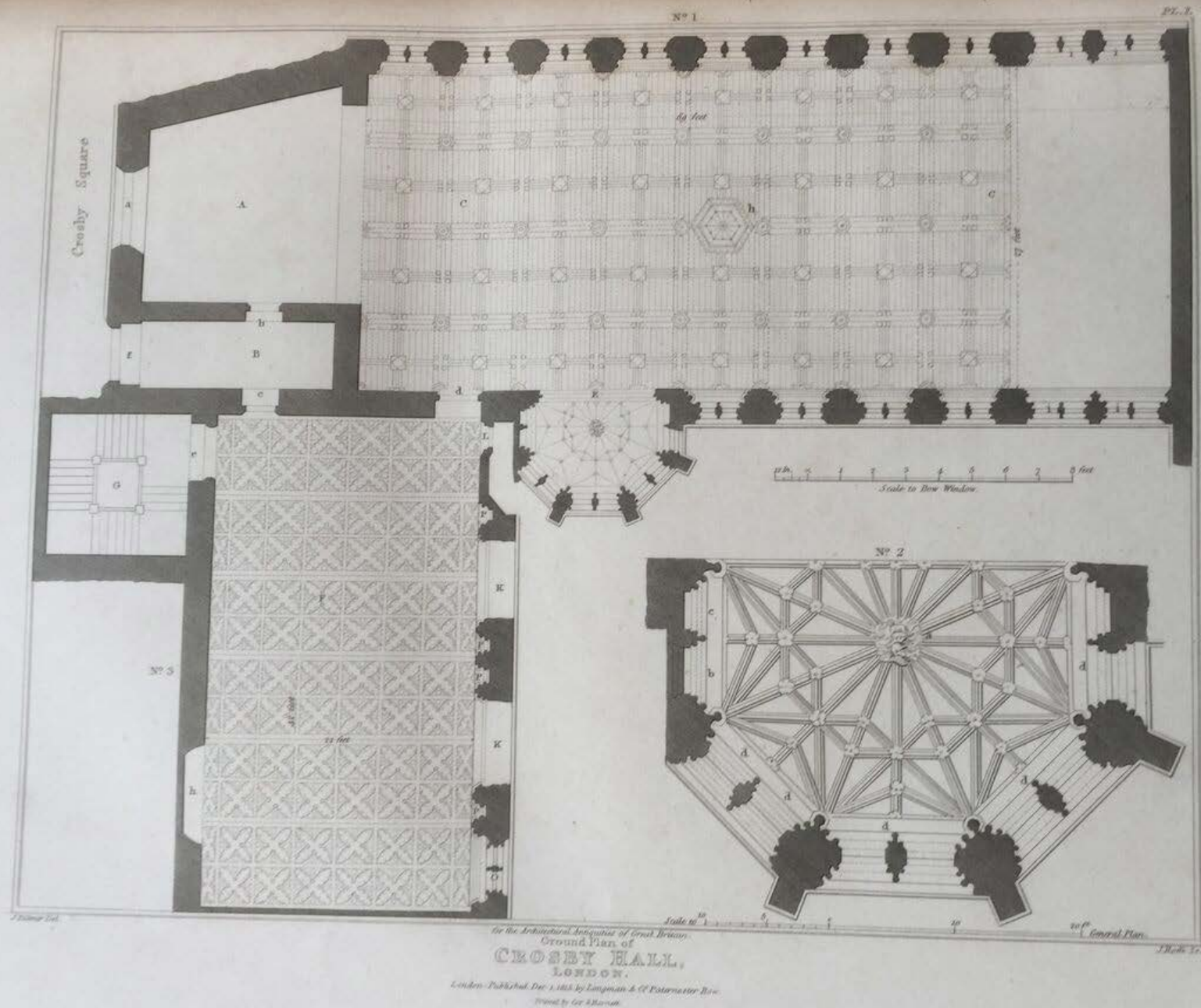
Walter H. Godfrey
Jan 21 1882

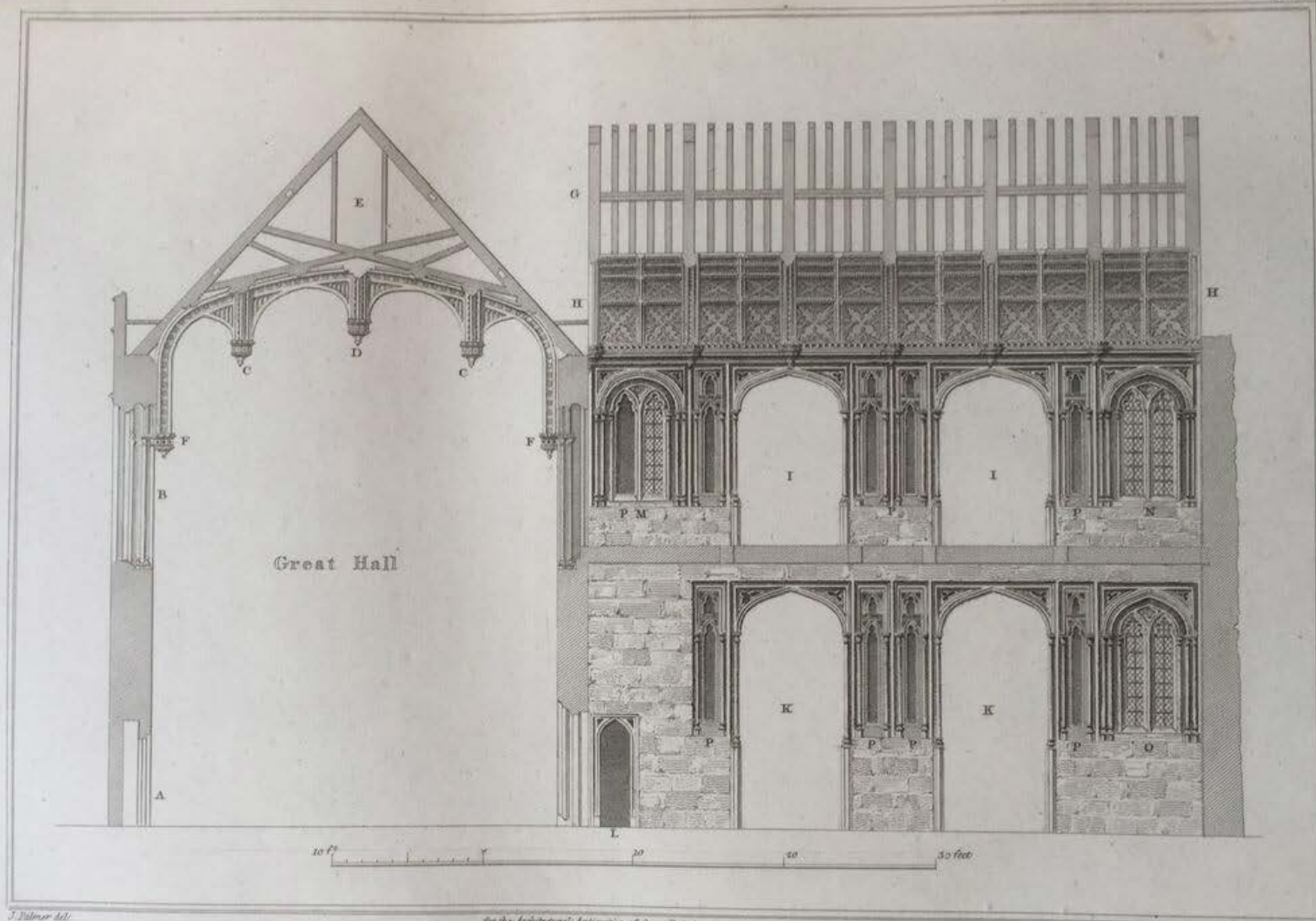


J. Smith del.

NORTH EAST VIEW OF CROSBY HALL.

(showing part of the interior of the Great Hall.)





J. Palmer del.

for the Architectural Antiquaries of Great Britain.
CROSBY HALL,
 LONDON.

J. Reith sc.

London: Published Sep 1, 1855, by Longman & Co. Paternoster Row.

Printed by Geo. Edwards



THE COUNCIL CHAMBER
looking East towards the Great Banqueting Hall.

(From an engraving by S. Rawle, after Nash)

CONJECTURAL GENERAL PLAN

Walls of original building which
existed above ground in 1834.
Portion of original walls with
conjectured openings shown.
Portion of original walls built
subsequently to main building.
Walls of buildings shown by
Crosby & Morgan's map, probably
later additions to Crosby Place.
Walls of original building as
shown by Wilkison, Blackburn
and Spence.



(1) SITE - OF - 5th JOHN SPENCER'S
WAREHOUSE NOW THE JEWISH
SYNAGOGUE

BACK GATE
*Now under house in
Crosby Square*

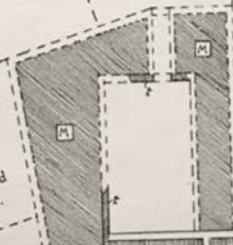
(2) POSITION - OF
HOUSE - OCCUPIED BY
JULIAN FRANCIS

Site of Gardens

CLOSE
OF
ST. HELEN'S
PRIORY

1st Tenement in
the occupation
of Sir John Crosby

1st Tenement
formerly occupied
by Robert Smith



Boundary

Walter H. Godfrey
Jan 21 1882

CONJECTURAL GENERAL PLAN

Walls of original building which
existed above ground in 1834
Portion of original walls with
conjectured openings shown
Portion of original walls built
subsequently to main building
Walls of buildings shown by
Crosby & Spurgeon's map, probably
later additions to Crosby Place
Walls of original building as
shown by Wilkenson, Blackburn
and Spurgeon.



(1) SITE - OF - 5th JOHN SPENCER'S
WAREHOUSE NOW THE JEWISH
SYNAGOGUE

BACK GATE
Now under house in
Crosby Square

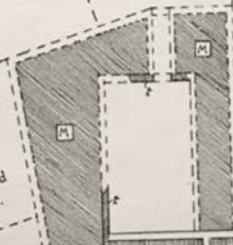
(2) POSITION - OF
HOUSE - OCCUPIED BY
JULIAN FRANCIS

Site of Gardens

CLOSE
OF
ST. HELEN'S
PRIORY

1st Tenement in
the occupation
of Sir John Crosby

1 Tenement
formerly occupied
by Robert Smith



DISHOPSGATE STREET

ST. HELEN'S PRIORY

Walter H. Godfrey
Jan 21 1882

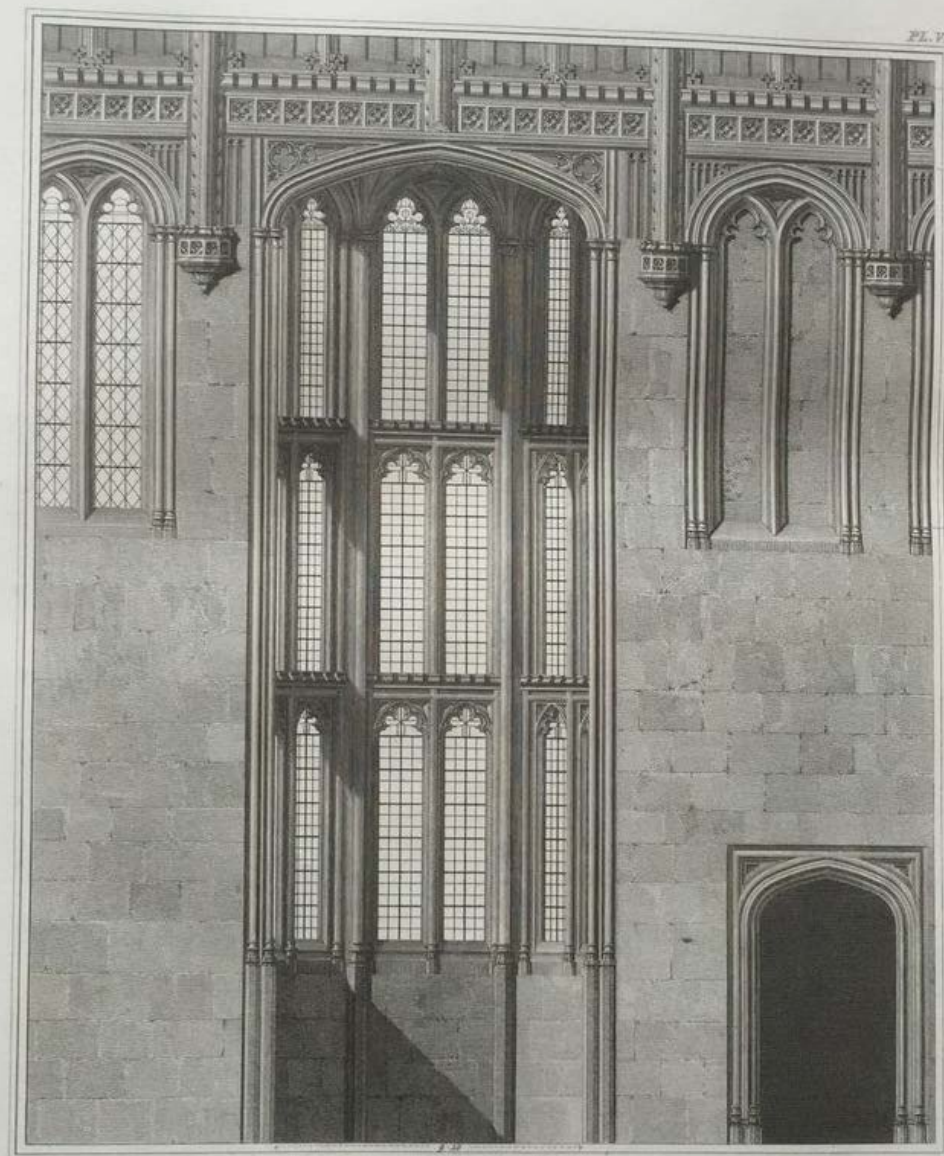


Crosby Place, London.
Doorway in Great St. Helens.









Engraved by R. La Rose from a Drawing by J. Fabian for the Architectural Antiquities of Great Britain.

ELEVATION OF BAY WINDOW, WEST SIDE
CROSBY HALL.
LONDON.

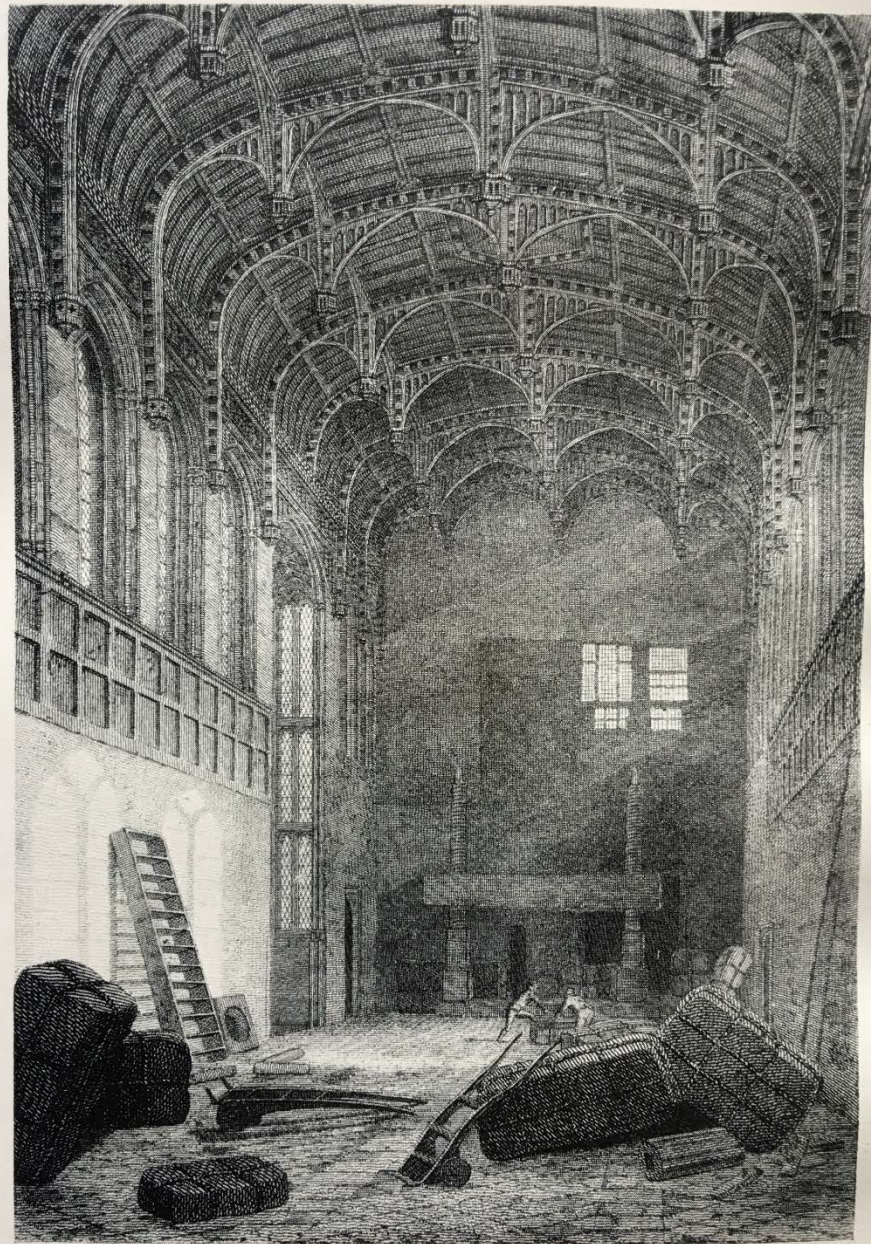
London: Published May 1, 1814, by Longman & O'Farrell, near New
Street, by Daymond.



THE BANQUETING HALL, CROSBY HALL ESTATE.

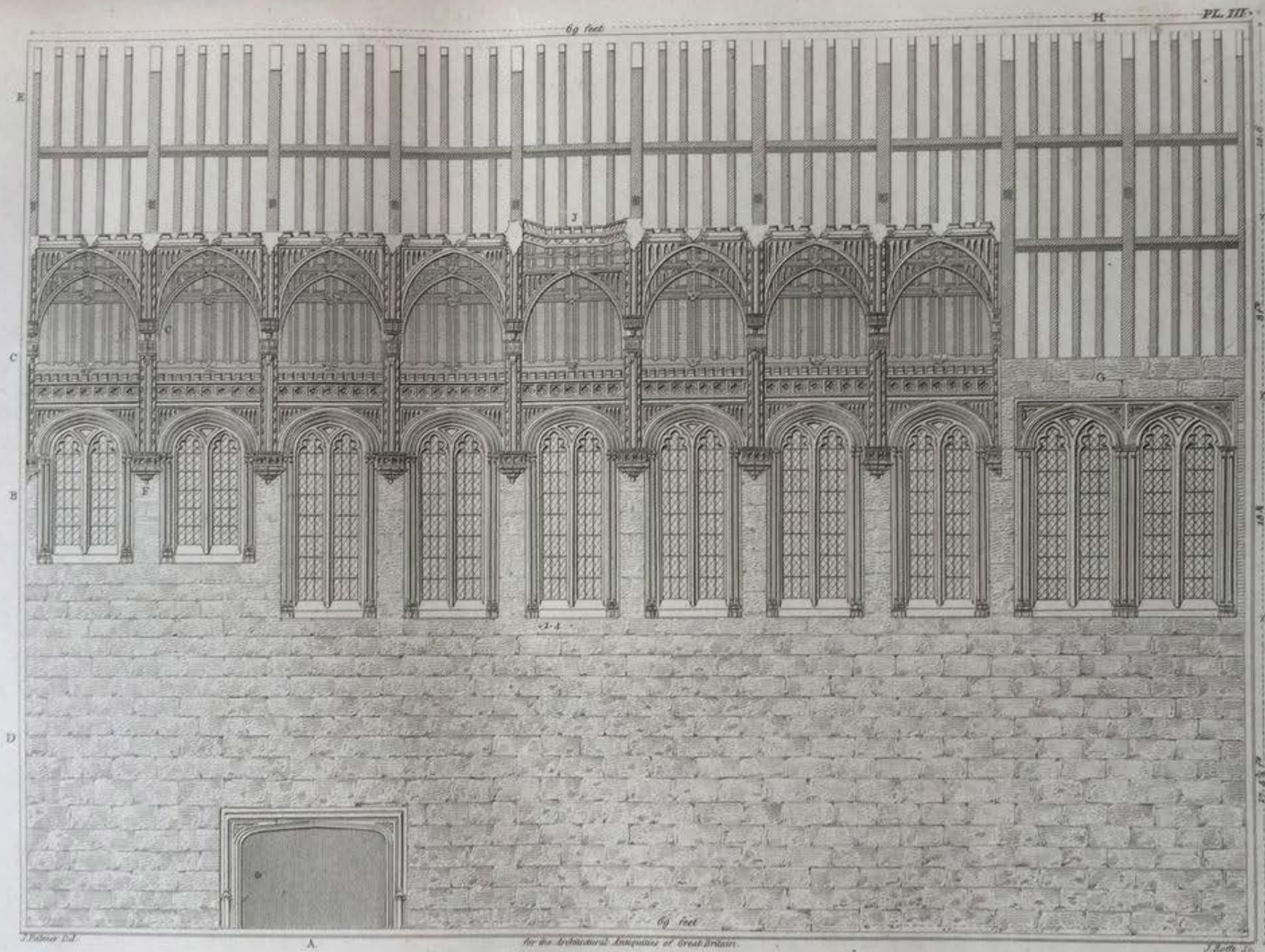
For Sale by MESS^{RS} BEADEL.





THE BANQUETING HALL
as a packer's warehouse, in 1800.

(From an engraving by J. Storer)



for the Architectural Antiquaries of Great Britain.
 Elevation &c. of the East Side of
CROSBY HALL,
 LONDON.
 London: Published Dec. 1. 1813. by Longman & O. Paternoster Row.
 Printed by G. & R. Smeath.

CONJECTURAL GENERAL PLAN

Walls of original building which
existed above ground in 1834.
Portion of original walls with
conjectured openings shown.
Portion of original walls built
subsequently to main building.
Walls of buildings shown by
Crosby & Spurgeon's map, probably
later additions to Crosby Place.
Walls of original building as
shown by Wilkenson, Blackburn
and Spurgeon.



(1) SITE - OF - 5th JOHN SPENCER'S
WAREHOUSE NOW THE JEWISH
SYNAGOGUE

BACK GATE
*Now under house in
Crosby Square*

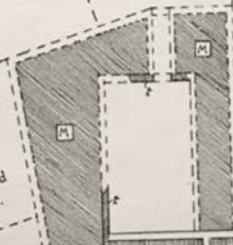
(2) POSITION - OF
HOUSE - OCCUPIED BY
JULIAN FRANCIS

Site of Gardens

CLOSE
OF
ST. HELEN'S
PRIORY

1st Tenement in
the occupation
of Sir John Crosby

1st Tenement
formerly occupied
by Robert Smith



Boundary

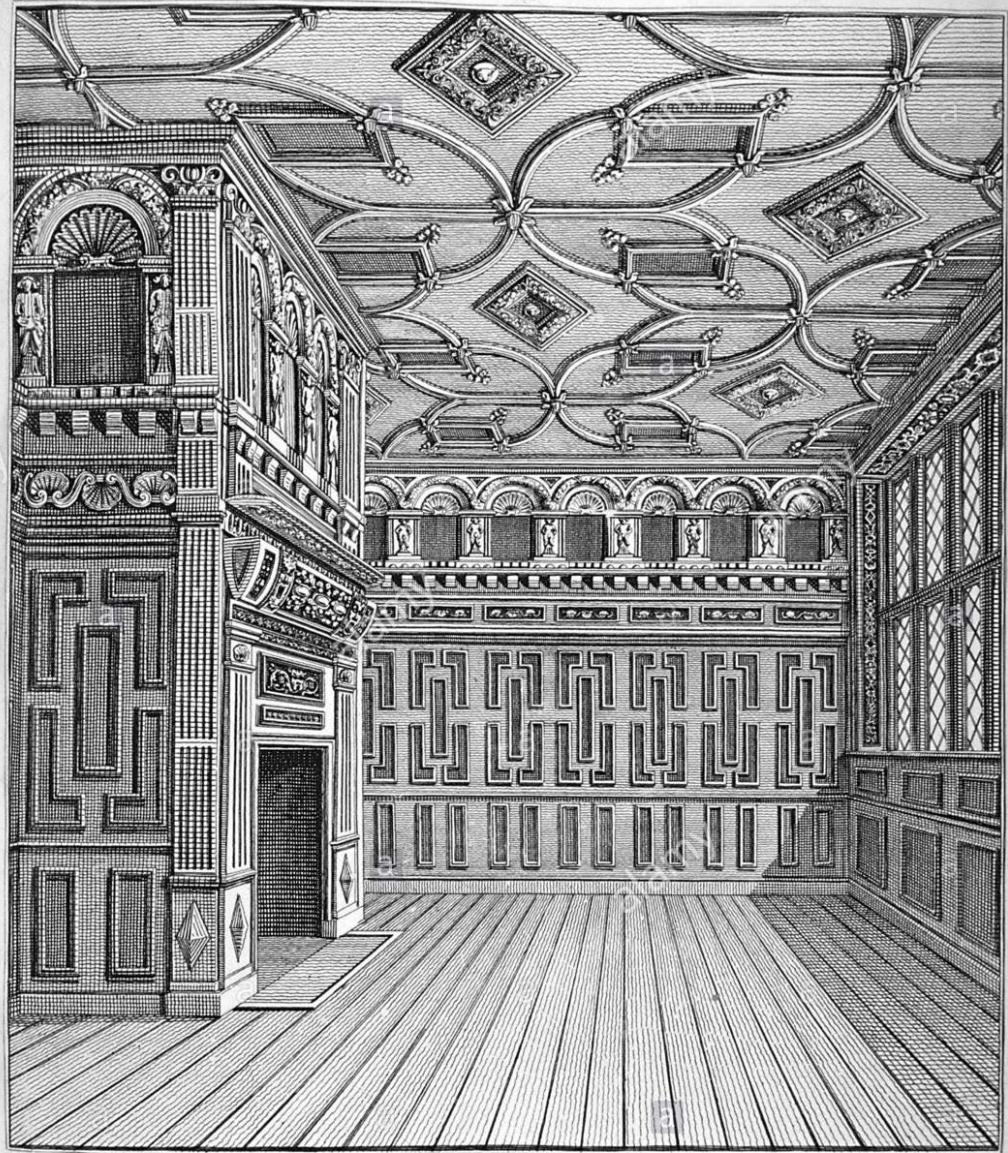
Walter H. Godfrey
Jan 21 1882



THE BANQUETING HALL
looking South, showing the Oriel Window.

(From an engraving by Wise, after Nash)





DRAWN IN MAY 1792

DOMESTIC ARCHITECTURE.

DRAWN AND ETCHED BY J.T. SMITH.

AN UPPER APARTMENT OF THE SAME MAGNIFICENT MANSION.

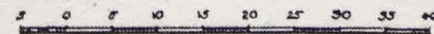
INTERNAL SPECIMEN OF THE DECORATED STYLE.
IN THE LATTER PART OF THE REIGN OF HENRY VIII.

THE CORNICE AND CEILING WERE OF PLASTER.
ALL THE REST OF OAK.

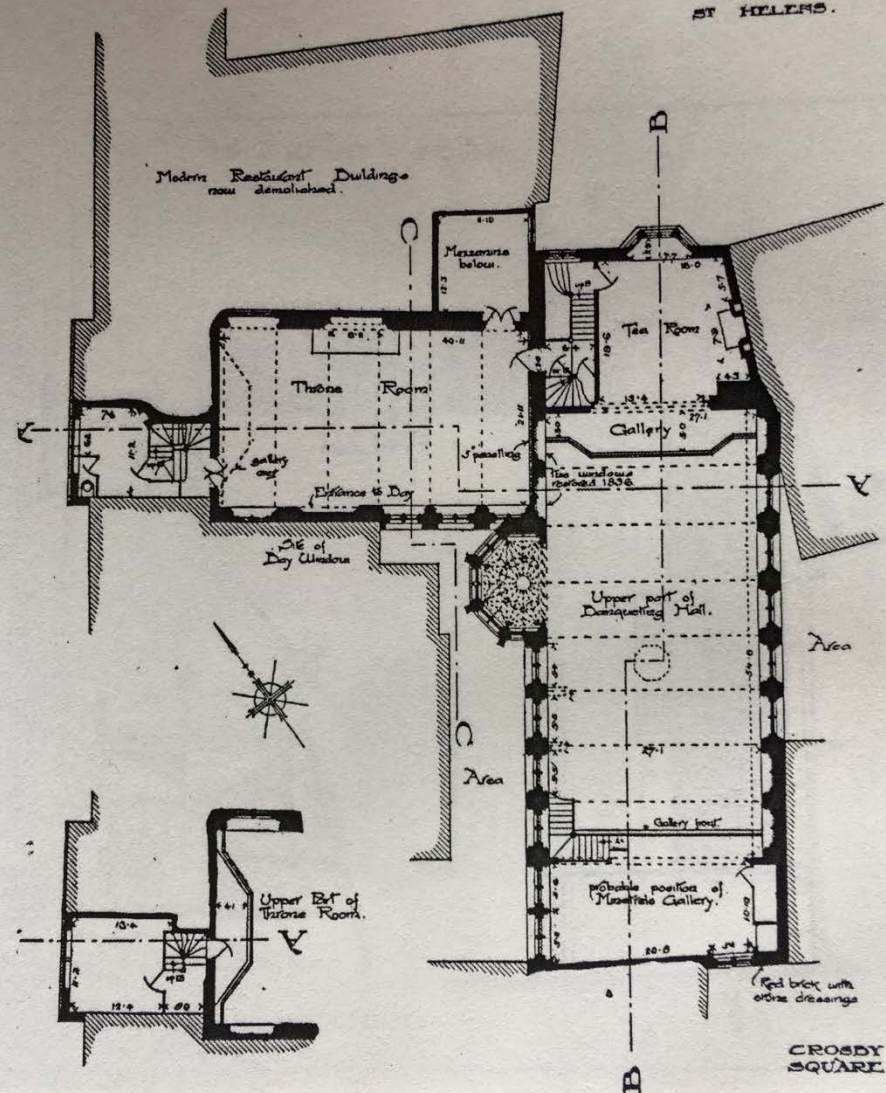




SCALE OF FEET.



GREAT
ST. HELLERS.



SECOND
MEZZANINE.

FIRST FLOOR PLAN.

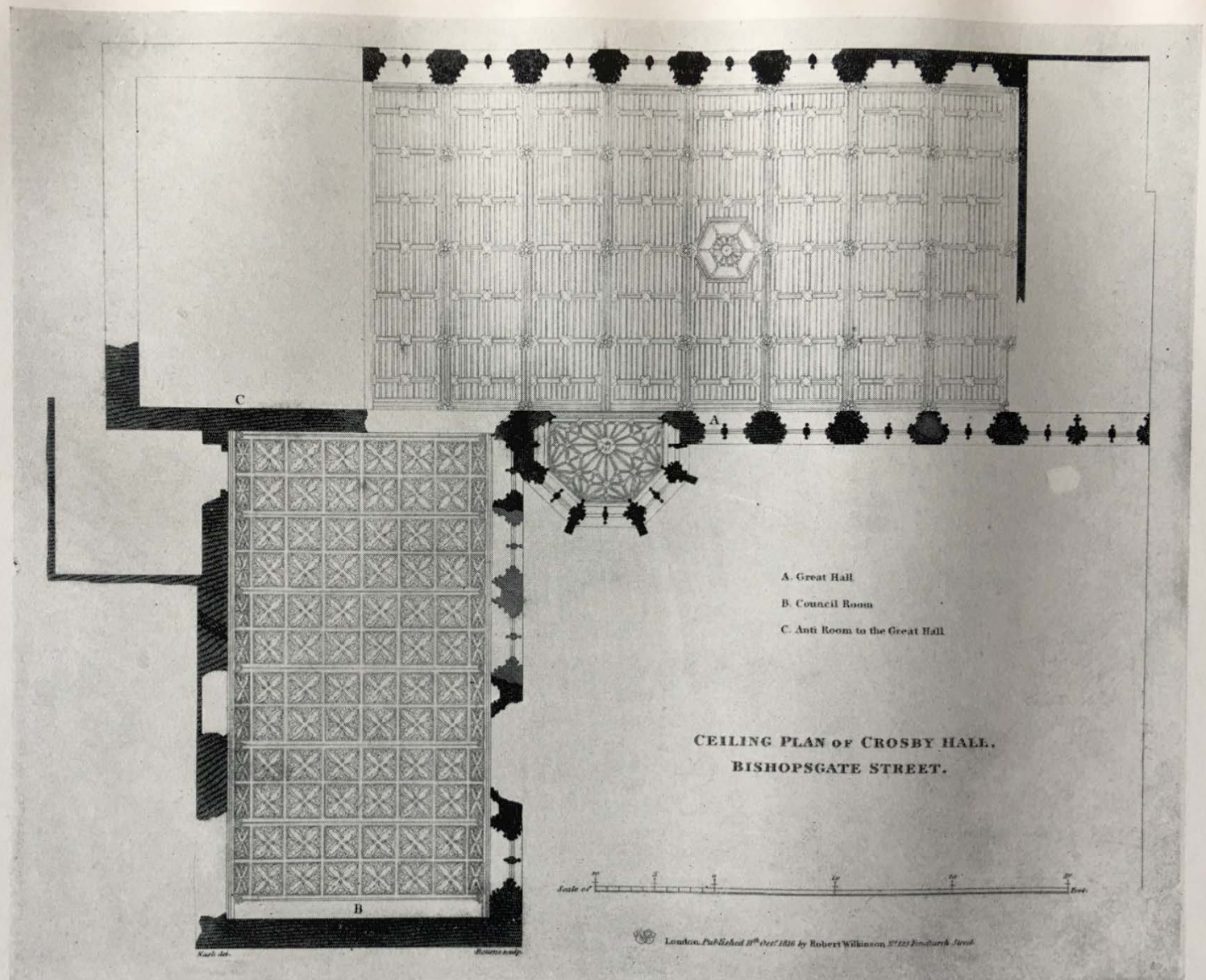
SCALE OF FEET.







The Ancient Gateway, forming the back entrance to the Palace from St. Mary Axe. The smaller view shows the entrance to the Banqueting Hall from the Priory Close.



Ceiling Plan of the Banqueting Hall and Council Chamber.

(From an engraving by Bourne, after Nash)

