

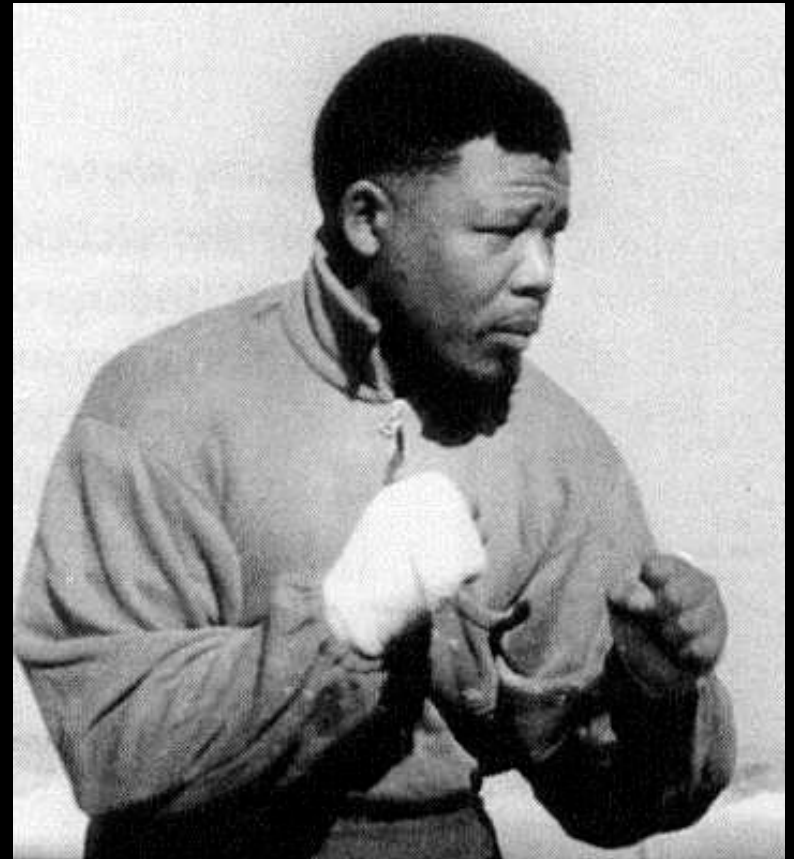
Nelson Mandela in the 21st century



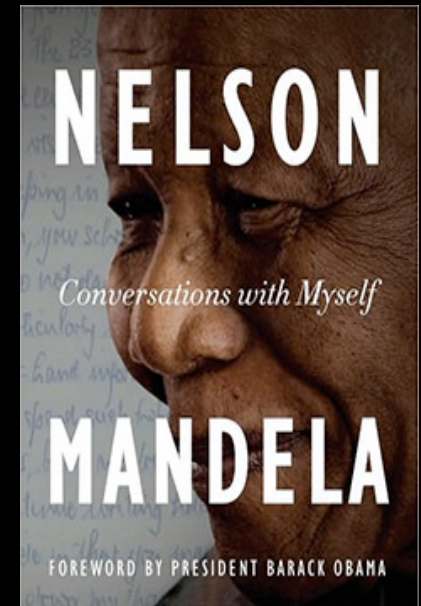
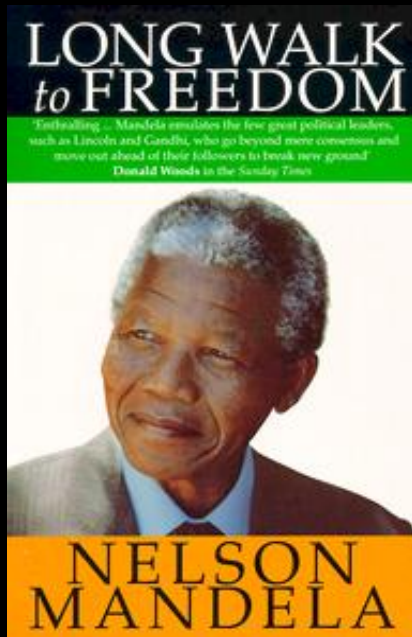
Professor Elleke Boehmer
(University of Oxford)
Gresham College, 6 June 2018

Nelson Rohihlahal Mandela

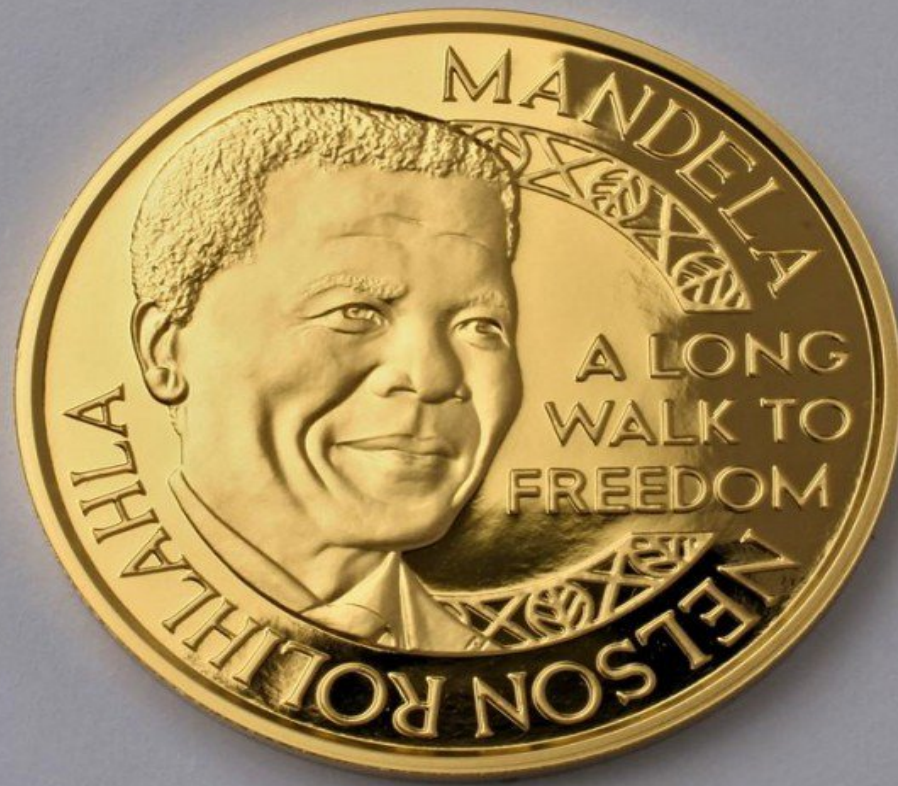
(1918-2013)



National leader, global stature



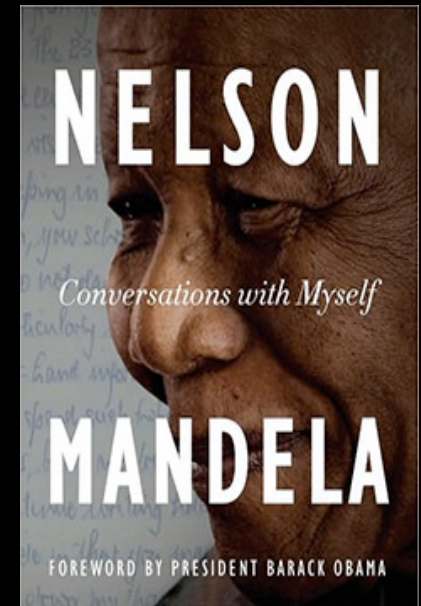
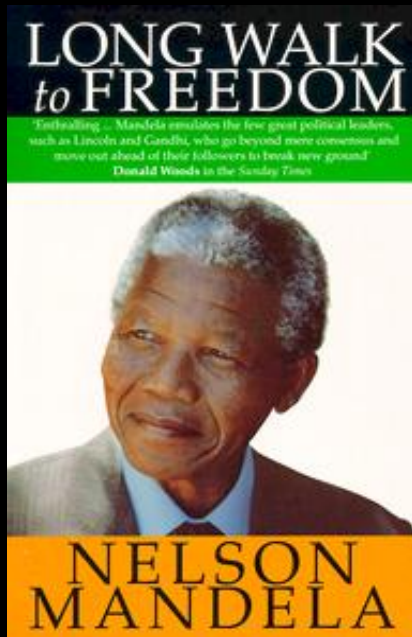
National symbol



More famous than ...



National leader, global stature



More nationalist symbolism



World recognition



dress, image, reciprocity



‘...best days ...’



Nelson Mandela and
Diana, Princess of Wales

- lineage and networks
- metropolitan status
- political vision

Lineage and networks



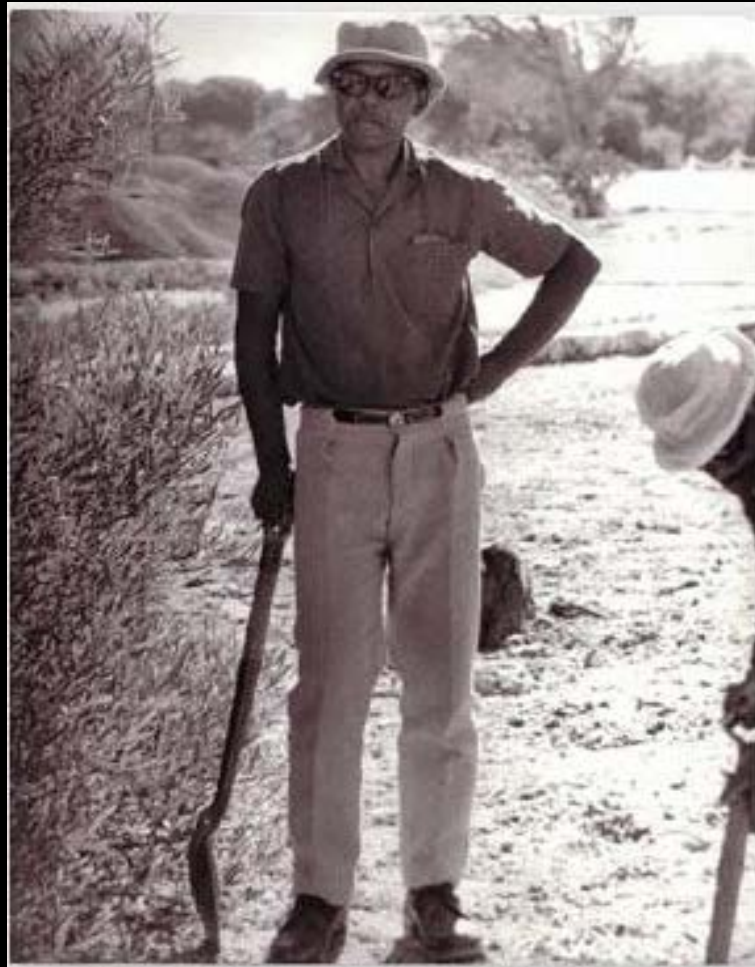
Walter Sisulu and Mandela
1960s, 1990s



metropolitan status



Political vision



National symbol



Koleka Putuma '1994: a love poem' (2017)

I want someone who is going to look at me
and love me
the way that white people look at
and love
Mandela.

Someone who is going to hold onto my memory
The way that white people hold onto Mandela's legacy.

...

You don't know love
Until you have been loved by Mandela.
You don't know betrayal
Until you have been betrayed like Mandela.

...

And this is one of the many residues of slavery:
being loved like Mandela.

THE END