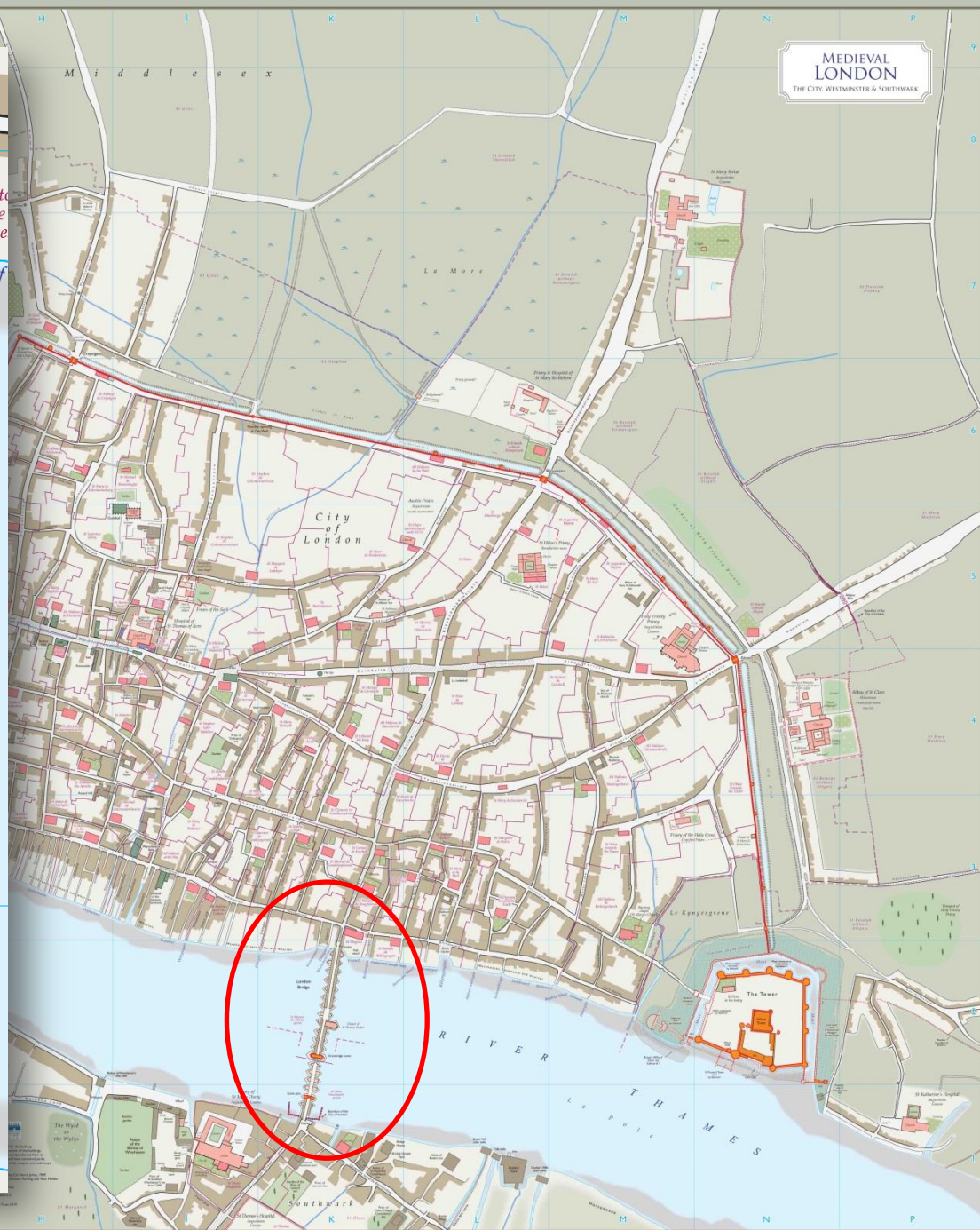
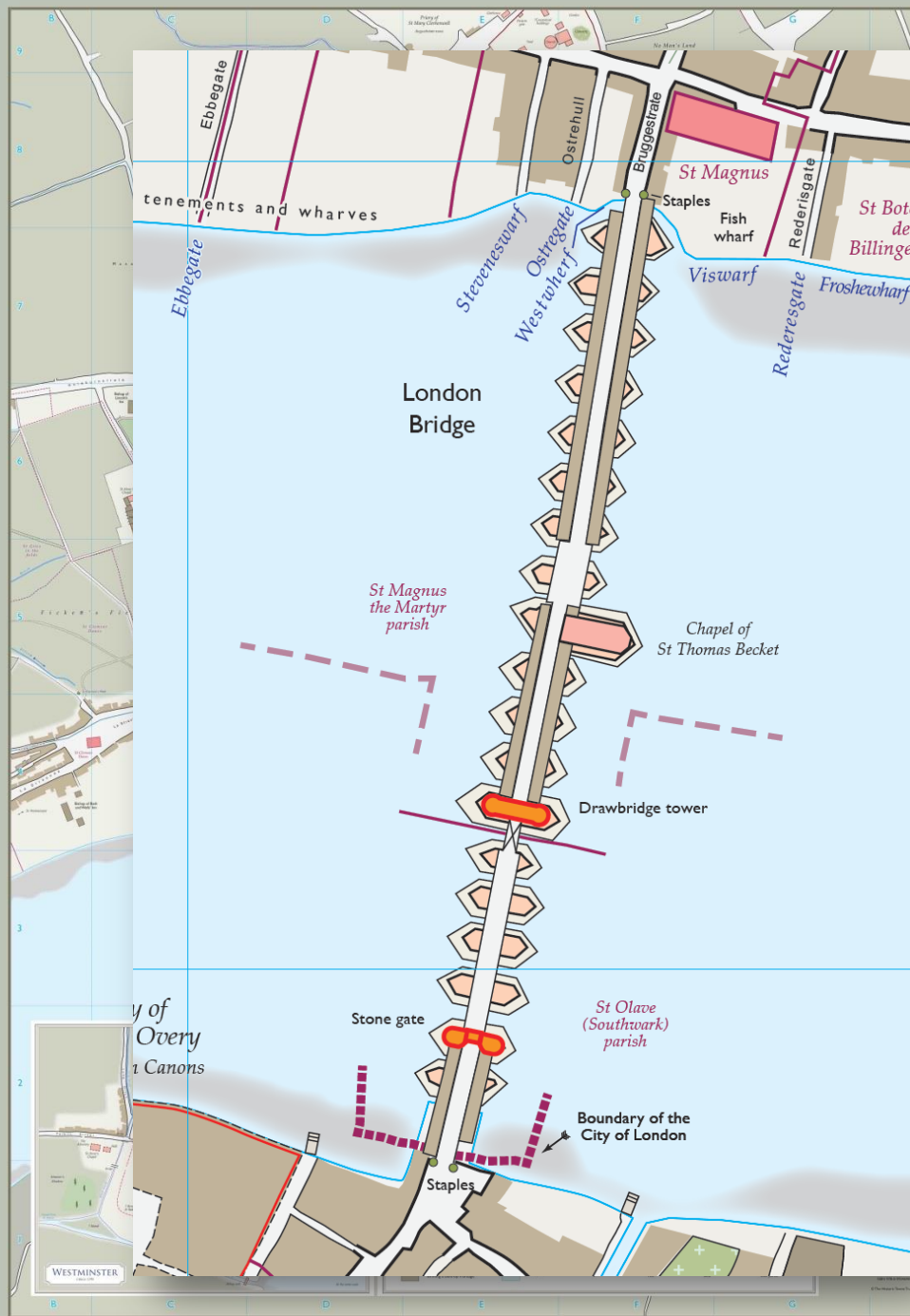


Thomas Becket and London

The Mercers' Company and Gresham College

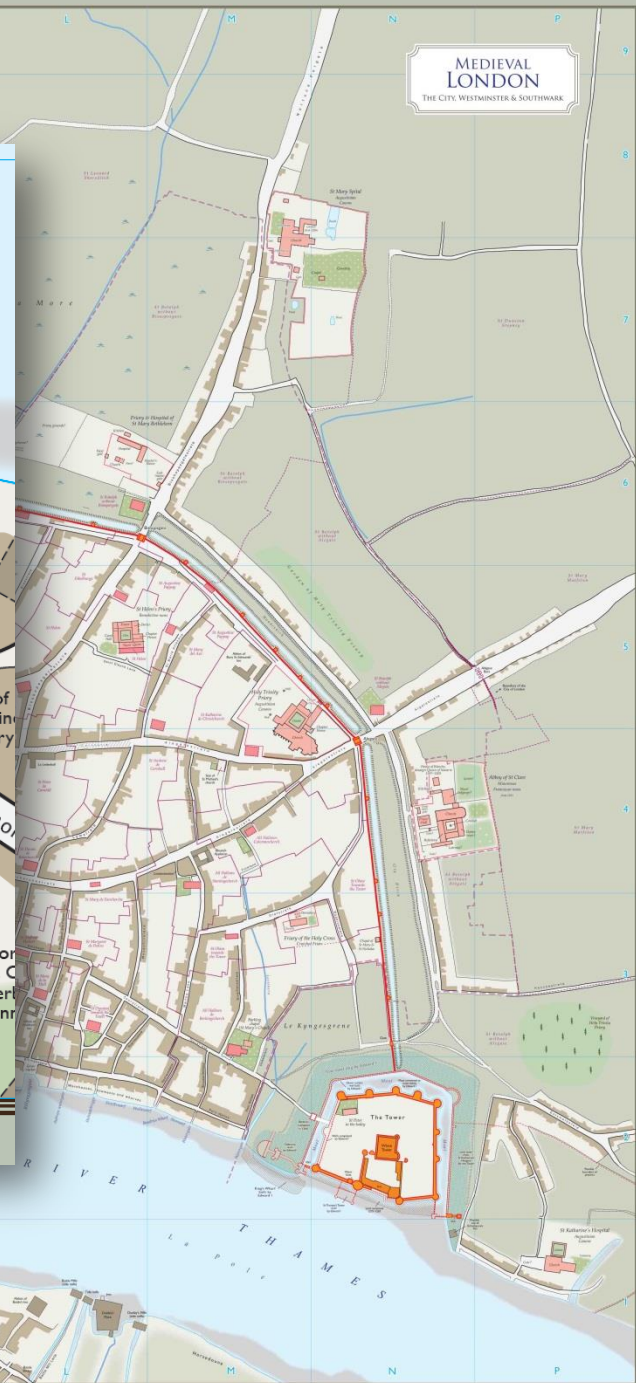
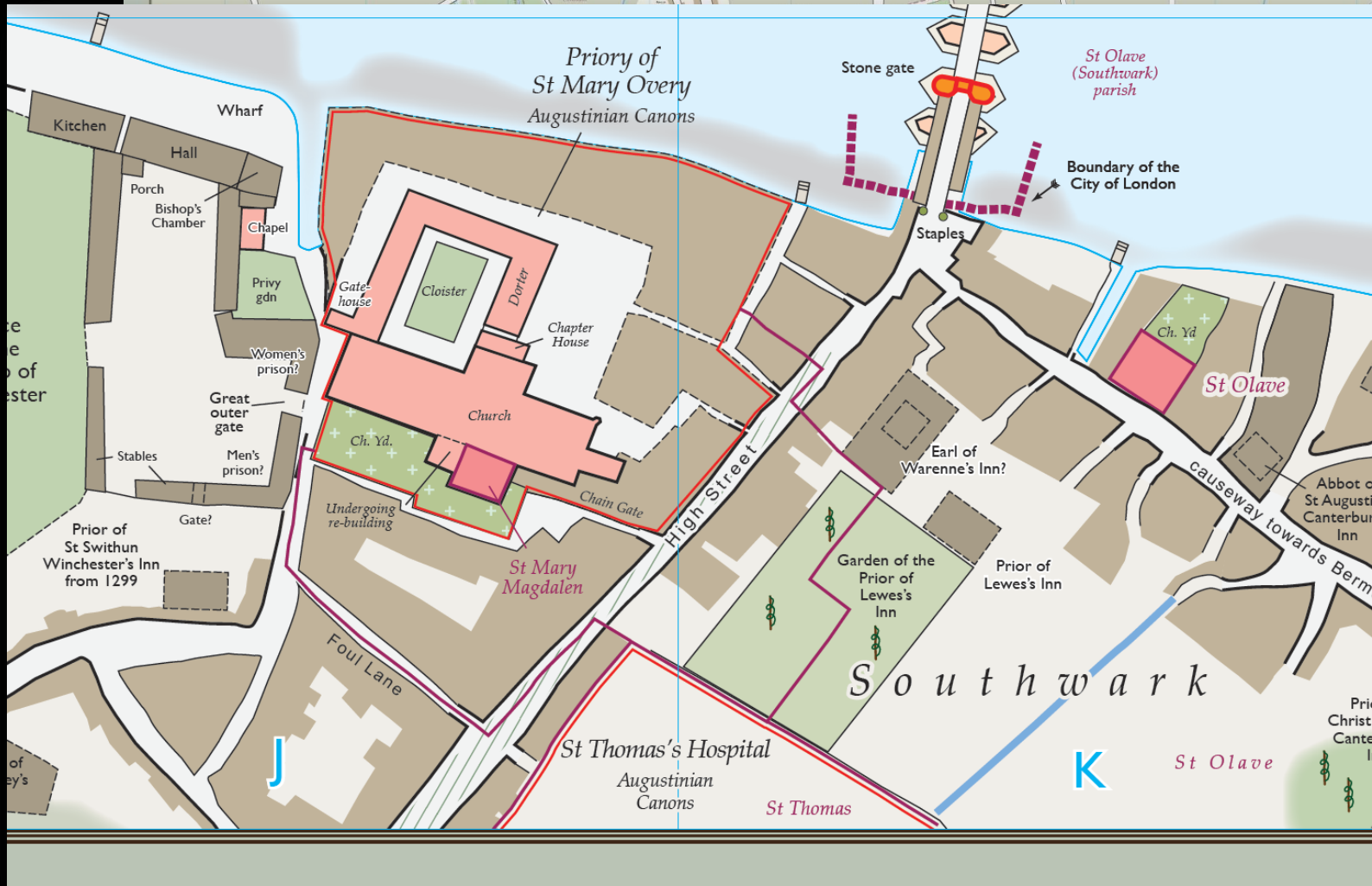














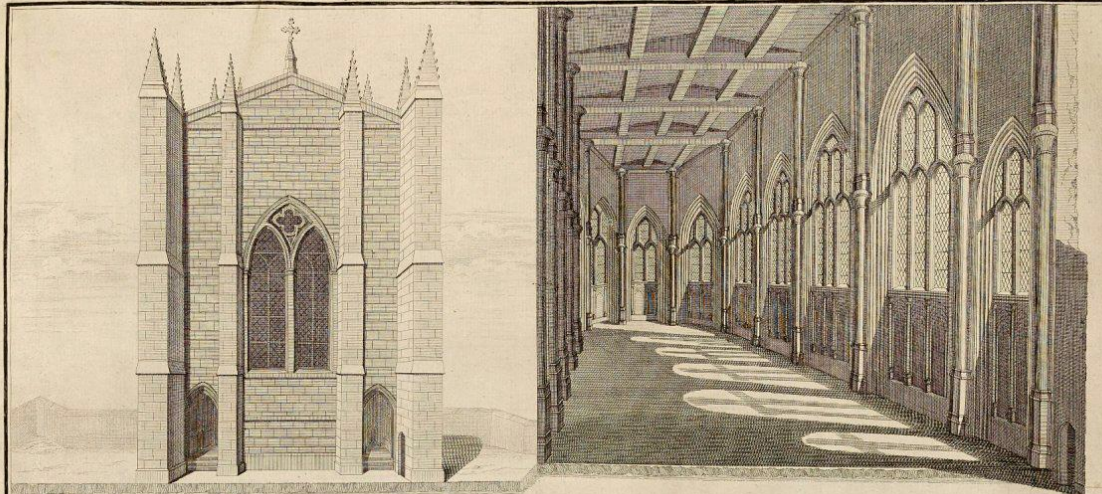




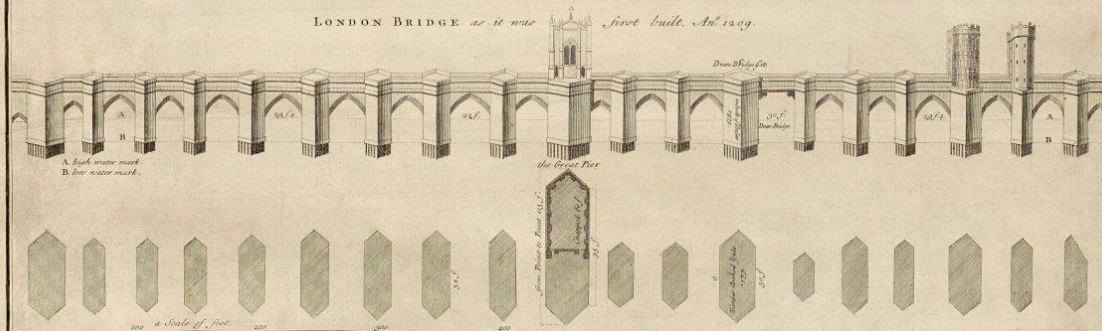


Museum of
London

A VIEW of the WEST FRONT of the CHAPPEL dedicated to S^t THOMAS on LONDON BRIDGE; also the INSIDE VIEW from West to East of the said CHAPPEL as it was first built, An^o 1209.



LONDON BRIDGE as it was first built, An^o 1209.



LONDON BRIDGE.

Over the River THAMES was a Ferry and before any BRIDGE was built the first Bridge was of Timber which continued but more or less until the present built by the appointment of K. EDWARD I. which continued many years but that failing another Timber Bridge was erected and was only which being subject to London & along a Stone Bridge was proposed to be built and PETER of COLECHEUR being appointed Architect and Surveyor thereof began the Foundation Anno 1209 viz 25th of Nov^r.

prevented & continued building of it during the Reigns of EDWARD I. and till the latter end of the 1st Year of K. JOHN when he died and was buried in a Tomb which he had erected for himself in the middle of the under Chapel in the lower Pier of the Bridge. HUMBERT, Master of the Schools at Paris, a Man of great Learning and who had then lately built the Bridge of Rochelle and Pontons near Bourdeaux in France, was appointed to carry on this Work being by the Advice of Hubert, Archbishop of Canterbury & others recommended to the Mayor & Citizens of London by K. JOHN, by his Letters Patent dated 18th April in the third Year of his Reign. This Humbert was employed to compass the Building of this Stone Bridge, the Chapel for which was not finished till some time after the 15th Year of K. JOHN. It seems that the Mason or Builder of this Stone Work was only invited the Chapel finished and roofed the same for private use of the Bishop to which Chapel was dedicated to S^t THOMAS of CANTERBURY and there was procured a fair Table of the Gifts and Donations of particular Lords, given to support this Bridge. The Length of the Bridge measures 920 feet and is supported by 20 arches of unequal Width, viz 6 feet high from the Stream, 25 feet or more over it 40 feet wide.

Some Houses and Buildings were at the first erected on parts of this Bridge and the Reverend of those Houses applied towards the Expence of building the Bridge the Middle Pier was formerly used for Stone Workmen & publick Storehouses many Years after this Bridge was finished. Houses were also erected on each side of the river to prevent them from being washed or ruined by the Overflowing of Tides that would have filled the River with Rubbish & after that of Chapel of S^t THOMAS was turned into a dwelling House being so much altered & prevented its being used as a church or school till this present time in this Manner by G. F.

a Member of the Society of Antiquaries London

A VIEW of the WEST FRONT of the CHAPPEL dedicated to S^t. THOMAS on LONDON BRIDGE; also the INSIDE VIEW from West to East of the said CHAPPEL, as it was first built, An^o 1209.



5 10 15 20
a Scale of feet.



Dominus solus dux eius fuit: et nō



In abhominacōnibz ad iracūdiam



erat dñs: et irritauerit in uanitatibz suis.



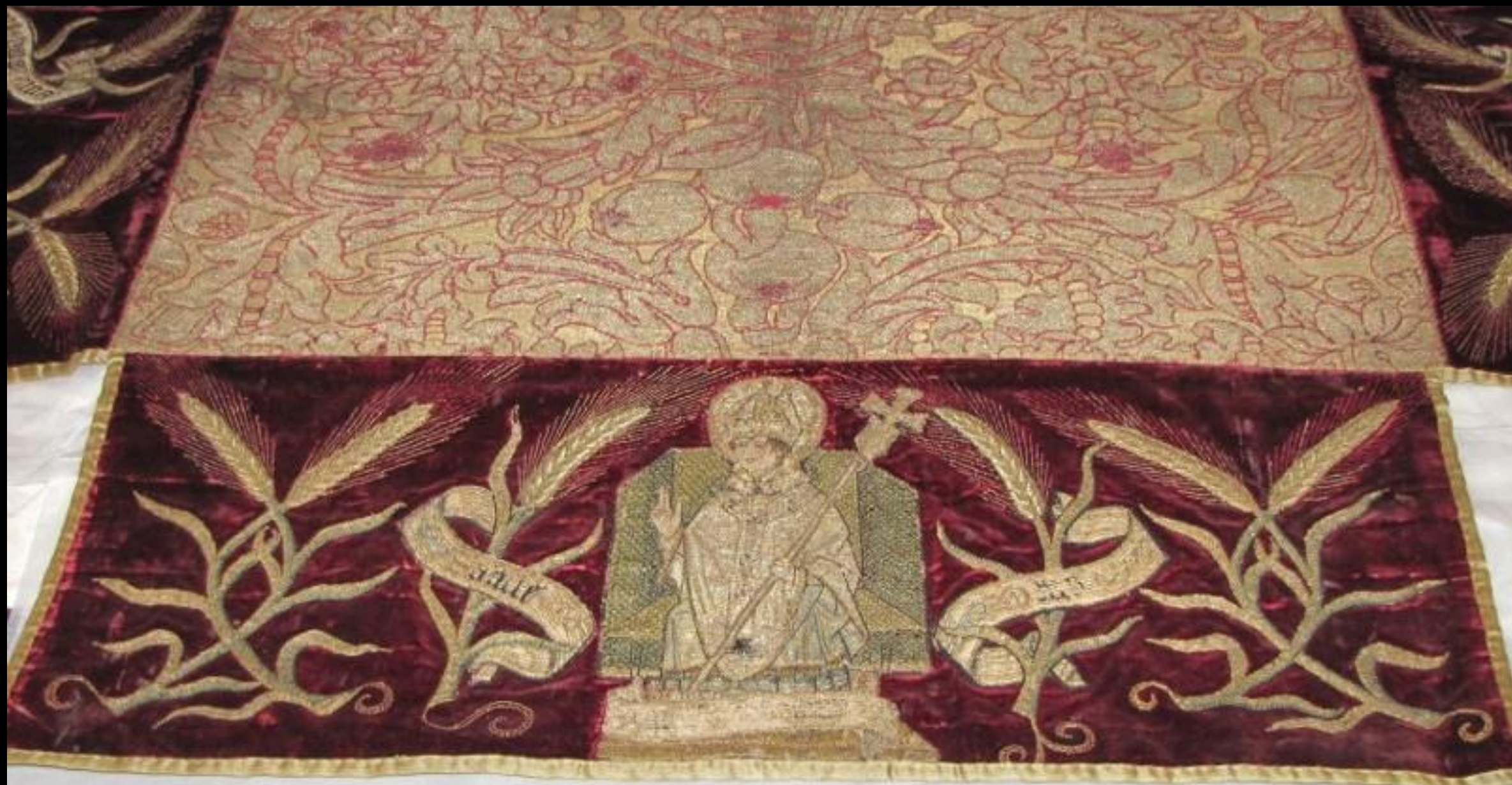




Museum of
London

















IN
COMMEMORATION
OF THE 60TH YEAR
OF THE REIGN OF
QUEEN VICTORIA
THE WORSHIPFUL
COMPANY OF MERCERS
PRESENTED
ST THOMAS'S HOSPITAL
WITH £ 10,000
IN THE YEAR
1898

ENGLAND'S GREATEST CITY IN 1520

