

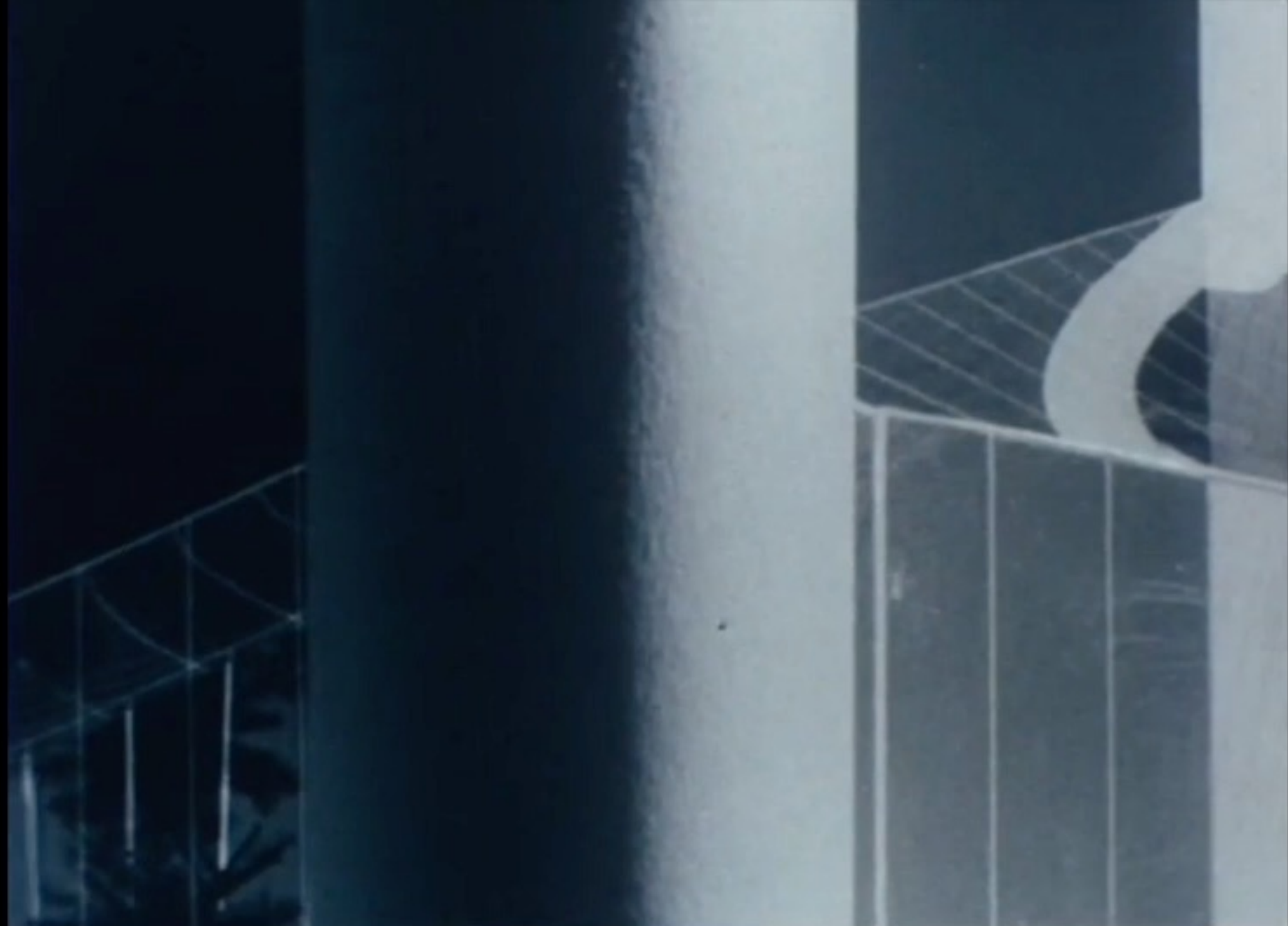
THE BARBICAN CENTRE AT 40

PAST, PRESENT AND FUTURE

Sir Nicholas Kenyon CBE



GRESHAM
COLLEGE











INCENDIUM. An. Dⁿⁱ MDCLXVI. cum IDEA. Novæ Urbis
 Urbis Viri Dⁿⁱ CHRISTOPHORUS WREN Eq^{us}. Edificiorum
 Urbis Architectus. — NB Lineæ rectæ et rectangulæ. Modulum Novæ
 Lineæ Punctis notata, Urbis Veteris Partis Flammarum Diluvio non
 Marcella denotant.
 Arcibus. Planem Numerate Terræ ejus.
 Hæc narratio Psalterio. Psalm. XLVIII.



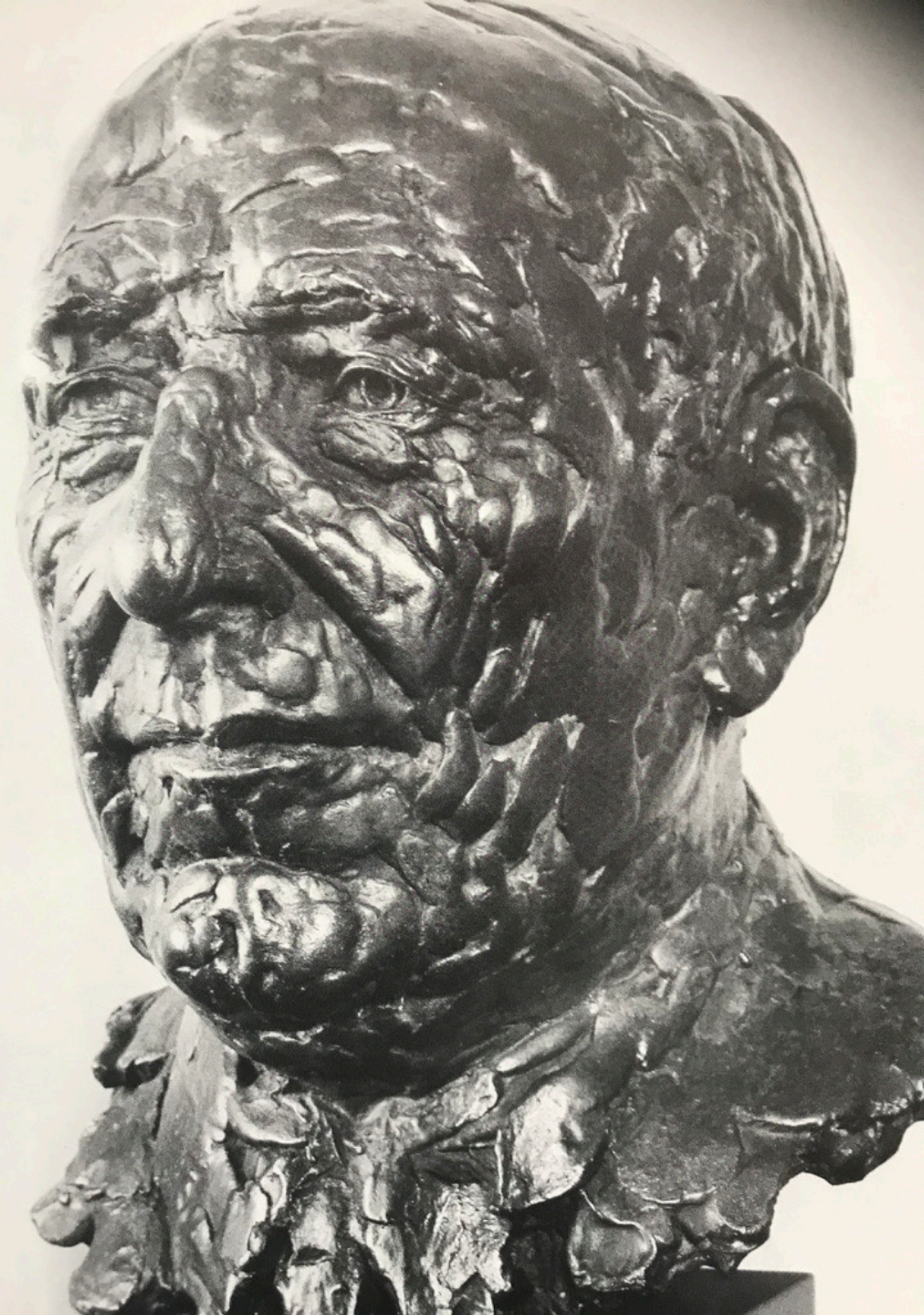
A PLAN of the City of LONDON after the great FIRE in the Year of OUR LORD 1666, with the MODELL of
 City, according to the Design and Proposal of S^r CHRISTOPHER WREN K^t &c. for Rebuilding thereof.
 NB The right and right angular. Lines &c. show the Modell of the New City. — The Short Lines extour & show the whole
 the Burnings. — The Prie Lines show the Parts of the Old Town which escaped the Flames. — & the Parochial Churches. — & Mark
 Walk about, you shall tell the Town thereof. Mark well her Bulwarks, set eye for Rowles, that ye may tell them that come after. Psalm. 48.
 H. Hulstburgh Sculpfit. 1701.

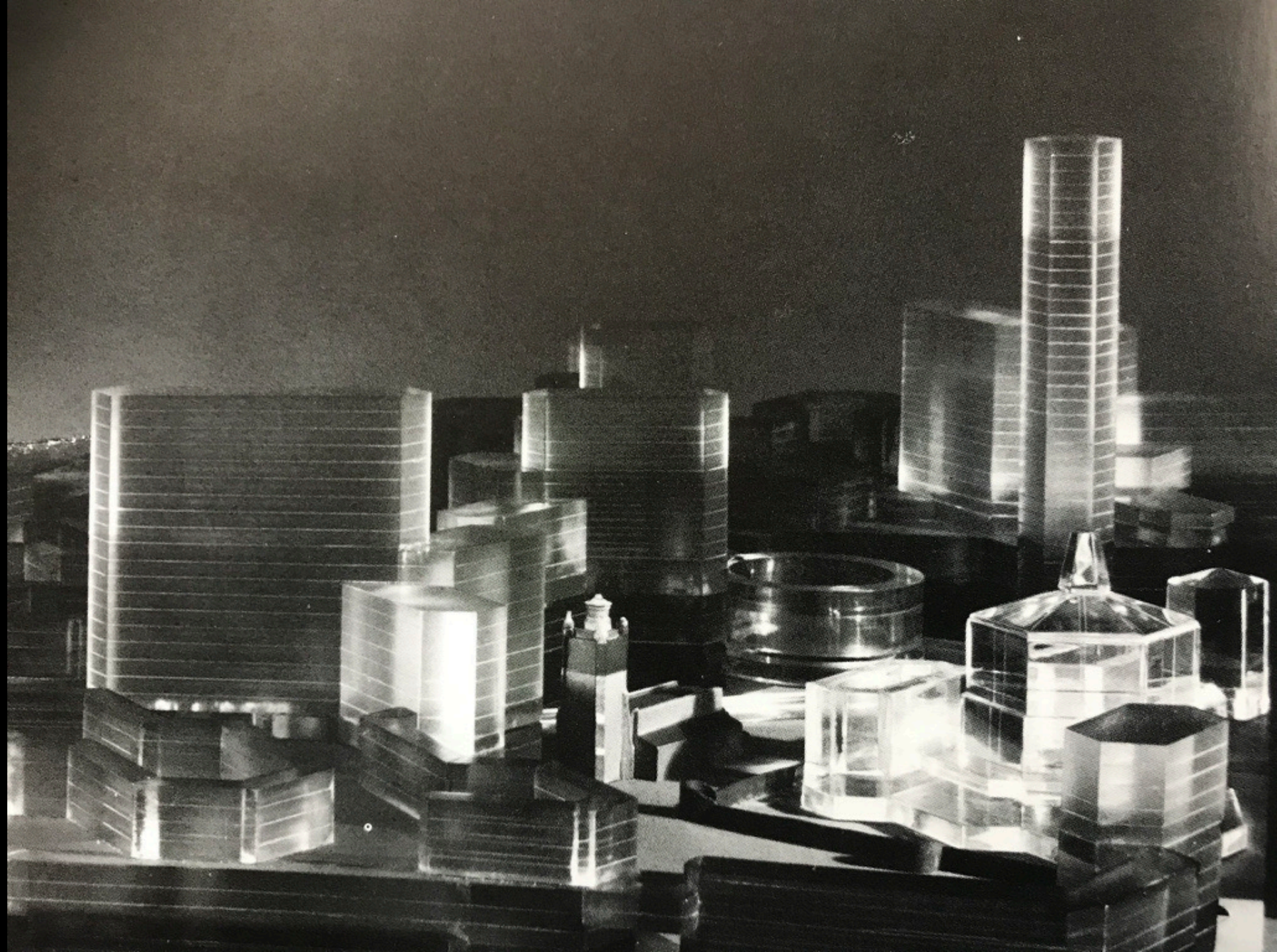


Cripplegate











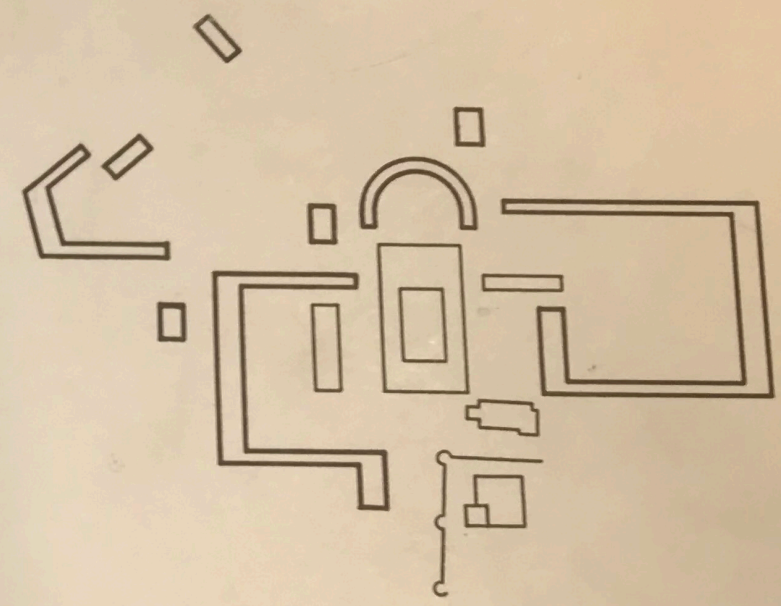


RIBA pix

A 89/H

A 89/H

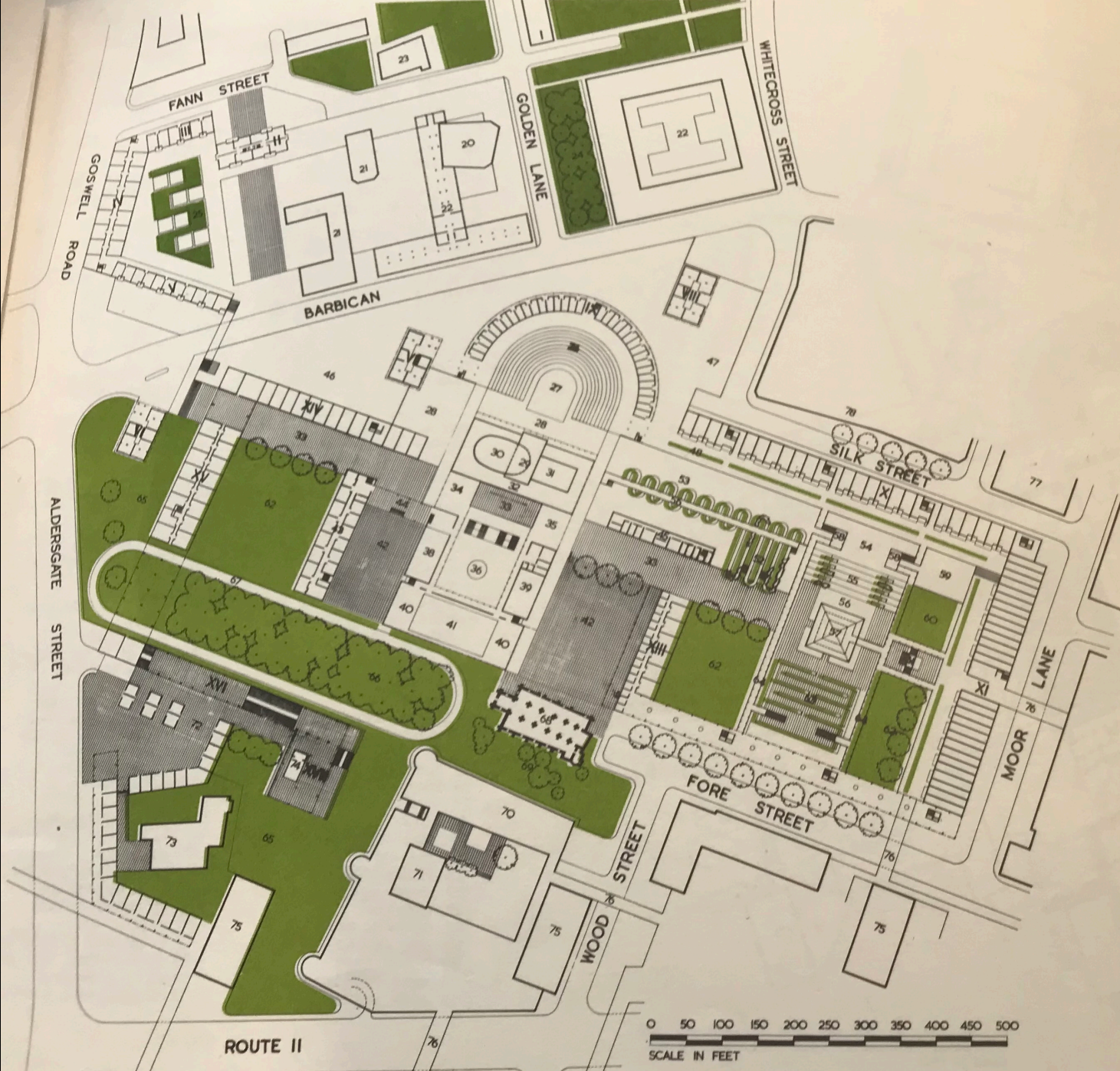
CLB 2/10/005



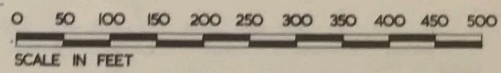
BARBICAN REDEVELOPMENT

Barbican Printed Reports, 1954 - date

LAYOUT OF PROPOSED DEVELOPMENT showing planted open space in green



- I 16 storeys of flats
- II 16 storeys of flats
- III 3 storeys of flats above shops and garages
- IV 3 storeys of flats above shops and garages
- V 3 storeys of flats above shops and garages
- VI 31 storeys of flats rising from the sunken moat
- VII 29 storeys of flats above 2 storeys of garages
- VIII 29 storeys of flats above 2 storeys of garages
- IX 6 storeys of flats above 2 storeys of garages
- X 6 storeys of flats and maisonettes above 2 storeys of garages
- XI 7 storeys of maisonettes above 2 storeys of garages
- XII 7 storeys of flats and maisonettes, open at ground level
- XIII 8 storeys of flats and maisonettes
- XIV 8 storeys of flats and maisonettes
- XV 9 storeys of flats and maisonettes
- XVI 7 storeys of flats and maisonettes, open at ground level
- XVII 7 storeys of flats and maisonettes, open at ground level
- 18 shops
- 19 garages and open parking
- 20 Cripplegate Institute
- 21 existing office buildings
- 22 new office buildings
- 23 Methodist Chapel
- 24 public open space
- 25 private open space
- 26 amphitheatre
- 27 open-air stage
- 28 ornamental water
- 29 stage and workshops
- 30 theatre
- 31 concert hall
- 32 art gallery
- 33 Broad Walk
- 34 west portico
- 35 east portico
- 36 quadrangle containing pavilion for Lord Mayor's coach
- 37 cloister
- 38 Hall of the City of London School
- 39 Hall of the City of London School for Girls
- 40 gymnasium
- 41 swimming bath
- 42 paved forecourt
- 43 City of London School; teaching block
- 44 City of London School; administrative block
- 45 Guildhall School of Music and Drama; music practise block
- 46 podium over garages
- 47 beer garden
- 48 terrace with parterre at level 70.00 above 2-room flats
- 49 terrace with parterre at level 60.00 above 2-room flats
- 50 terrace at level 51.00
- 51 walkway at level 56.00
- 52 formal planting
- 53 canal
- 54 fountain
- 55 cascades flanked by planting and stepped terraces
- 56 basin
- 57 conservatory
- 58 pavilion over the canal
- 59 sculpture
- 60 flower garden
- 61 stairs up to terrace and walkways at level 60.00
- 62 lawn
- 63 evergreen labyrinth
- 64 loggias with walkways above connecting the raised terraces
- 65 sunken grass-covered moat
- 66 bosage of trees
- 67 running track
- 68 St. Giles Church
- 69 St. Giles Churchyard
- 70 London Wall Restaurant
- 71 Barber Surgeons Hall
- 72 shopping centre
- 73 Ironmongers Hall
- 74 cafe
- 75 18 storey office block
- 76 foot-bridge over road
- 77 City greenyard
- 78 Whitbread's brewery



ROUTE II



a



c



b

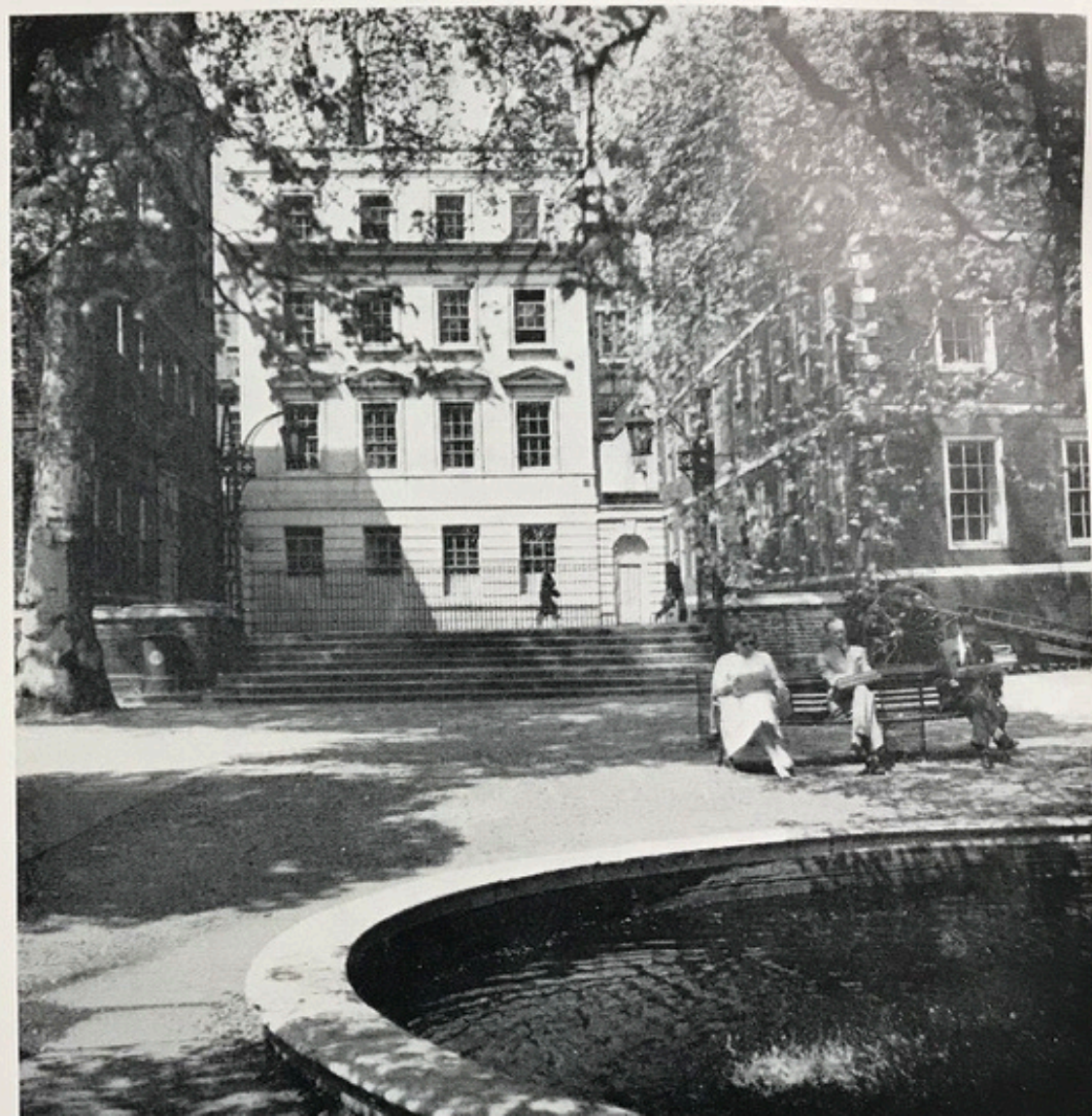


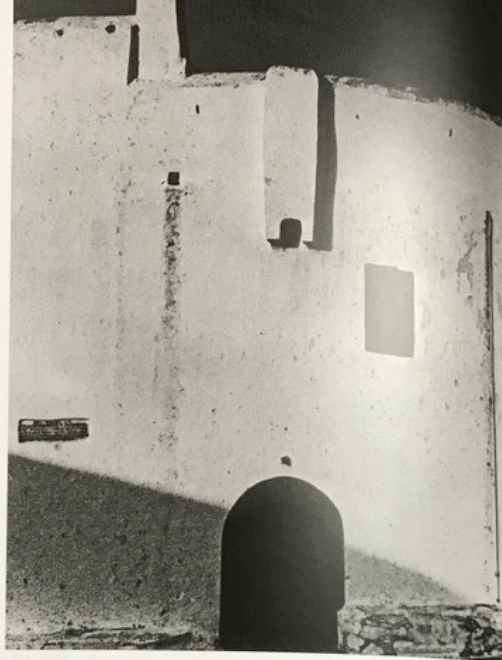
d

- (a) A terrace in the Temple.
- (b) Flowering crab trees in Hyde Park.
- (c) Plane trees in Berkeley Square.
- (d) The value of foliage for detailed planting.
- (e) Fountains in Trafalgar Square by day.



e





BARBICAN COMMITTEE

Thursday, 17th October, 1957.

Wilkinson, Sir G., Bt., Ald.
Pryce, E.C., Ald.
Gunton
Calder, Dep.
Batty
Sykes
Harrowing
Fox, Sir S.
Barratt
Wilkins
Hill, D.R.H.
Lamboll
Clackson
Cohen
Parker
Bellinger

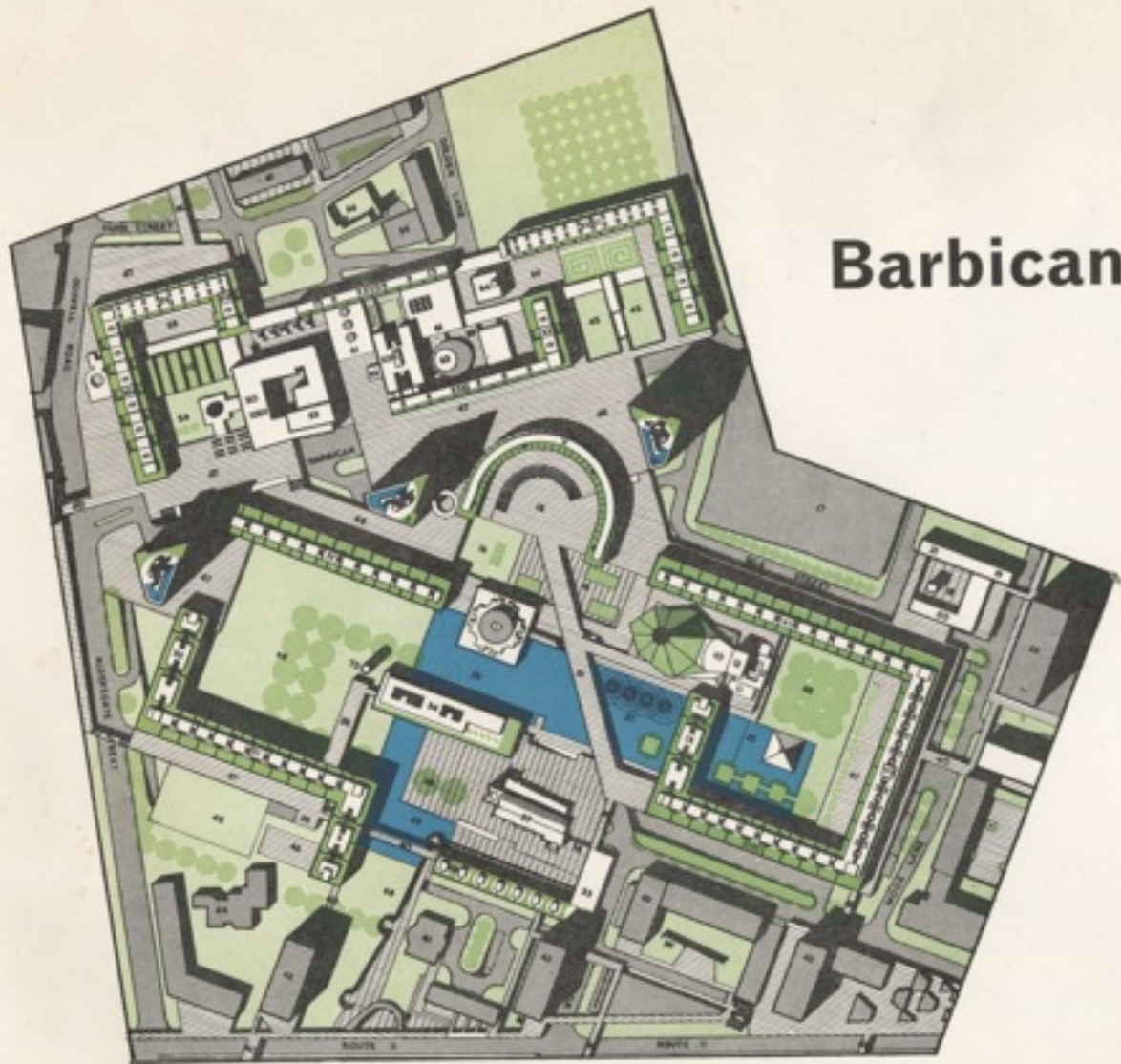
(Mr. Alderman Pryce in the Chair)

The Order of the Court of Common Council of the
3rd October, 1957, appointing the Committee; was read.

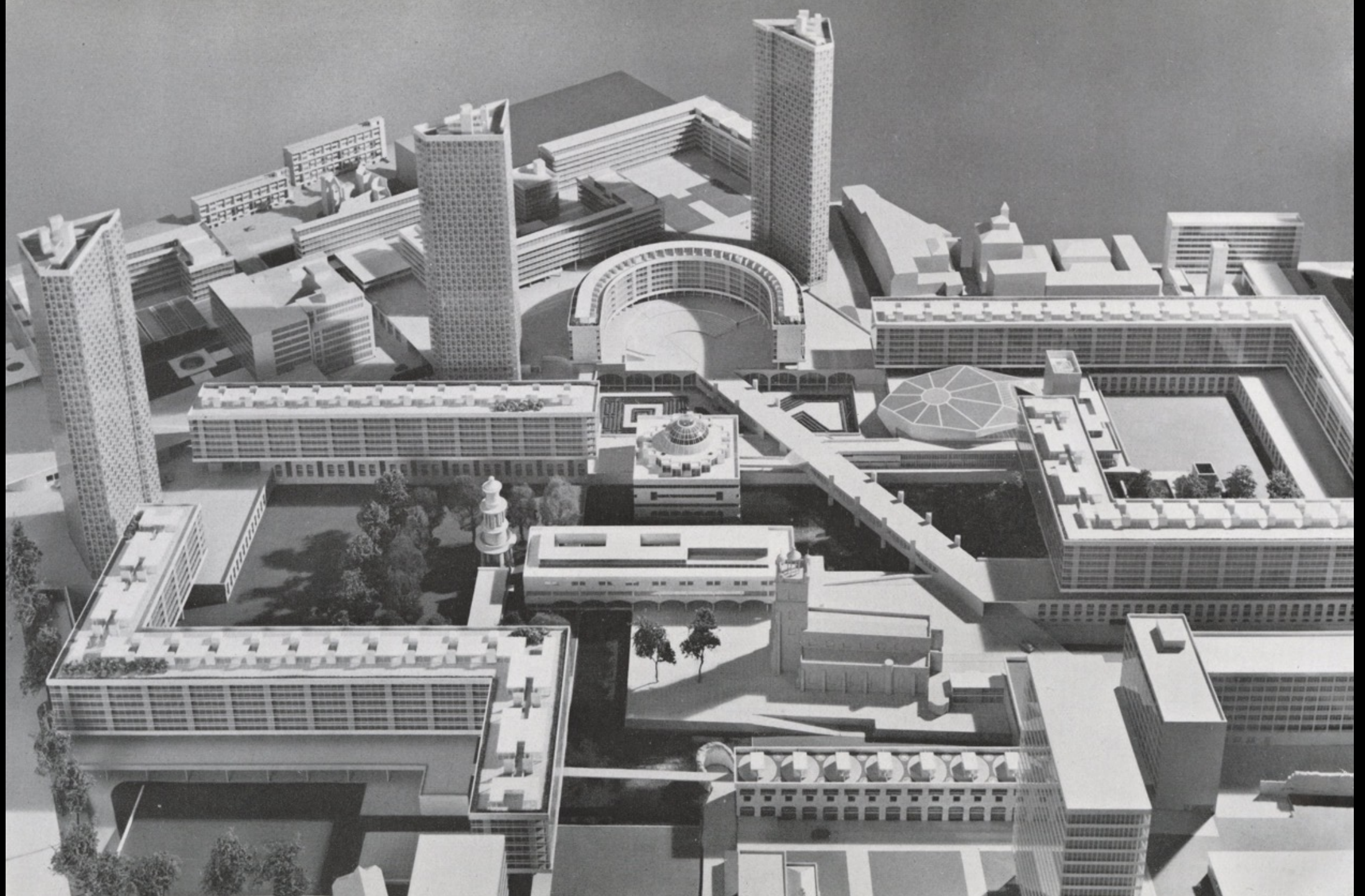
The Committee proceeded to elect a Chairman in
accordance with Standing Order No. 67.

The Town Clerk read a list of names of Members
eligible for the Chair, and Mr. Eric Frederick Wilkins
being the only Member who declared his willingness to
serve, Mr. Wilkins was declared unanimously elected
and took the Chair.

Eric Frederick Wilkins

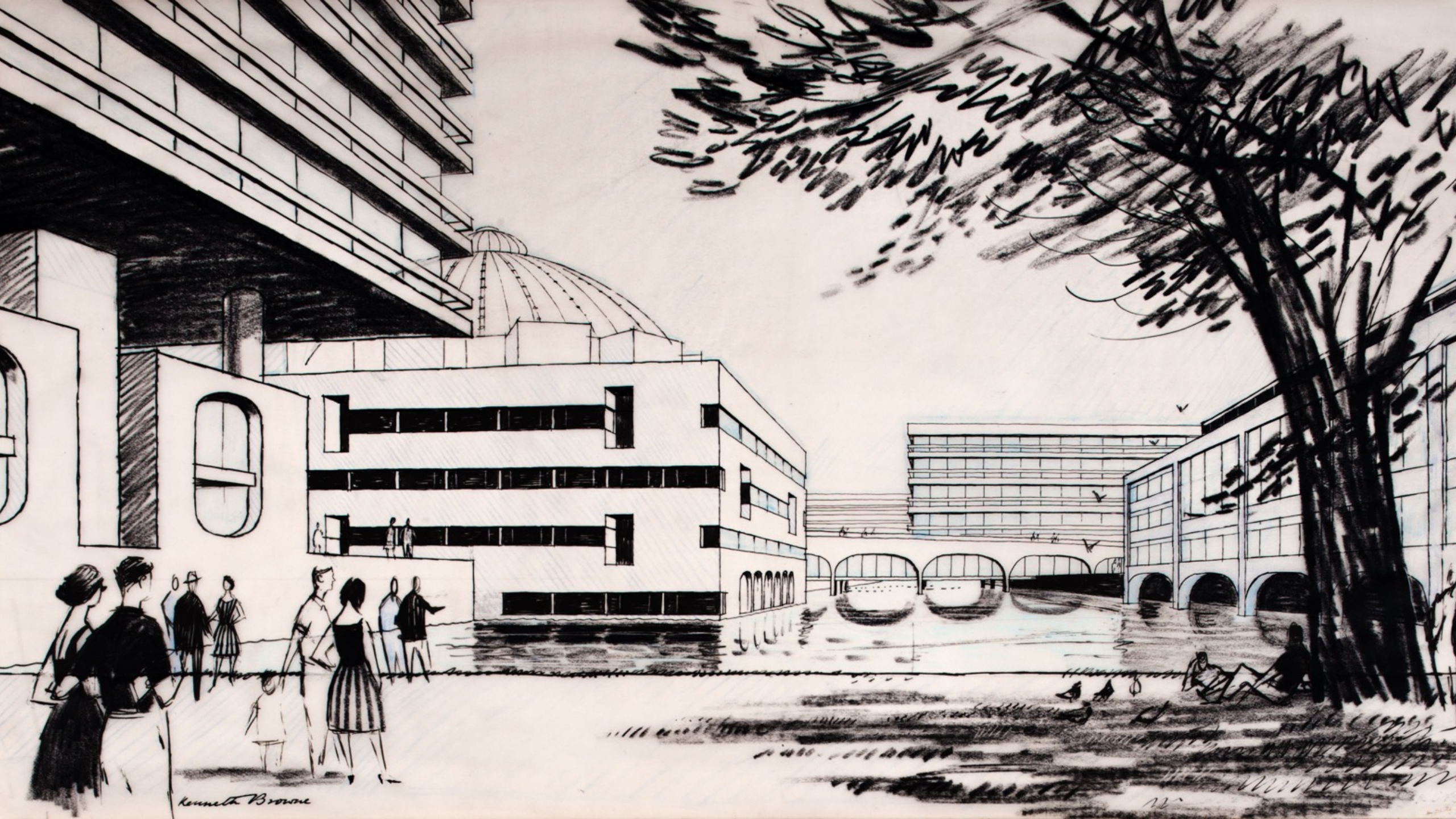


Barbican Redevelopment 1959









Kenneth Bronse

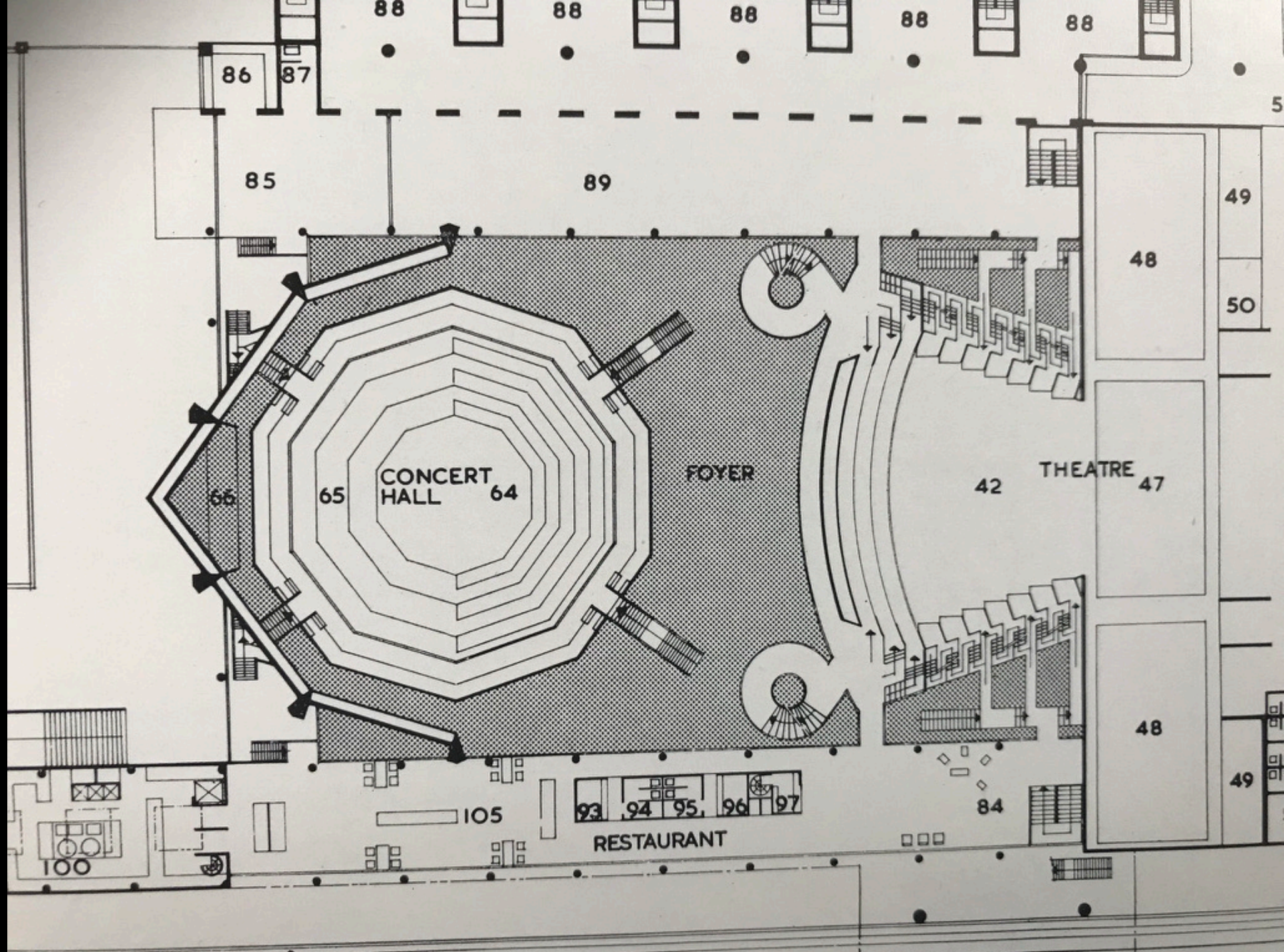
72

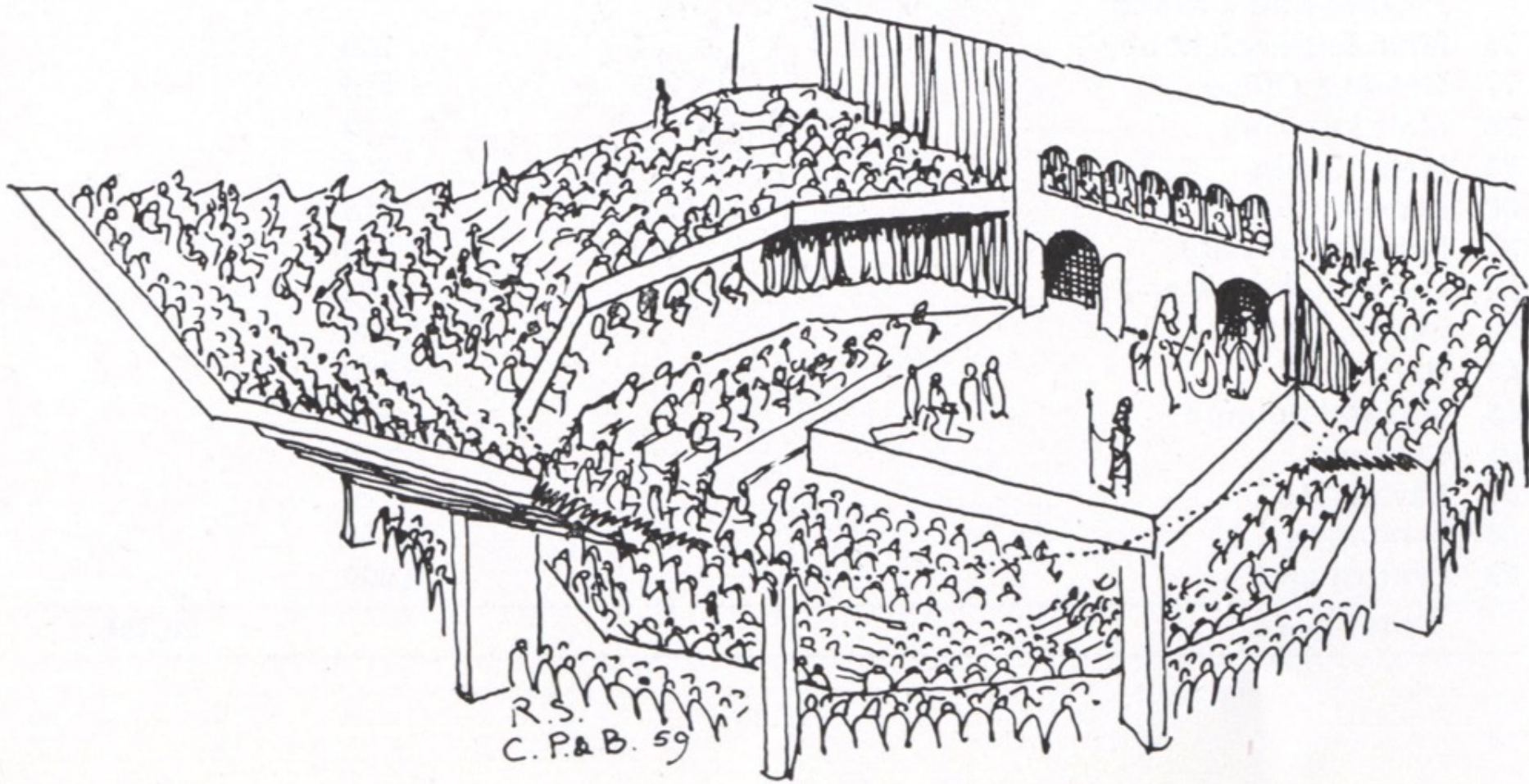


REPORT TO THE CORPORATION OF THE CITY OF LONDON
ON THE SUBJECT OF THE PROPOSED CONCERT HALL AND
THEATRE TO BE BUILT IN THE BARBICAN AREA WITH
RECOMMENDATIONS FOR THEIR DESIGN, ADMINISTRATION
AND FINANCE.

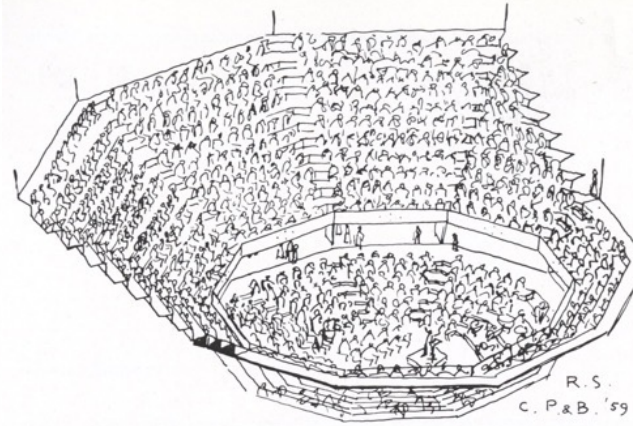
By

ANTHONY BESCH, M.A., Oxon.

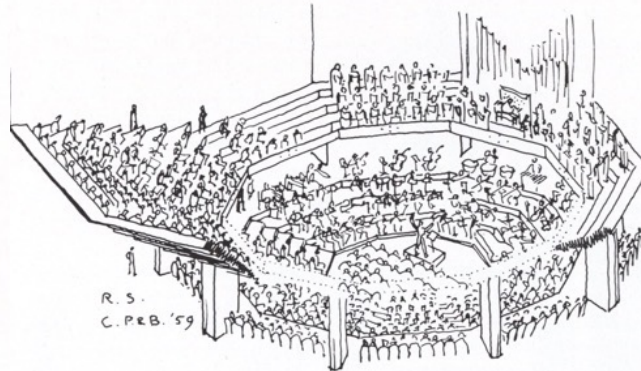




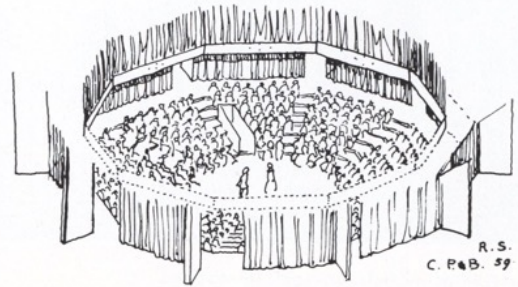
R.S.
C.P.&B. '59



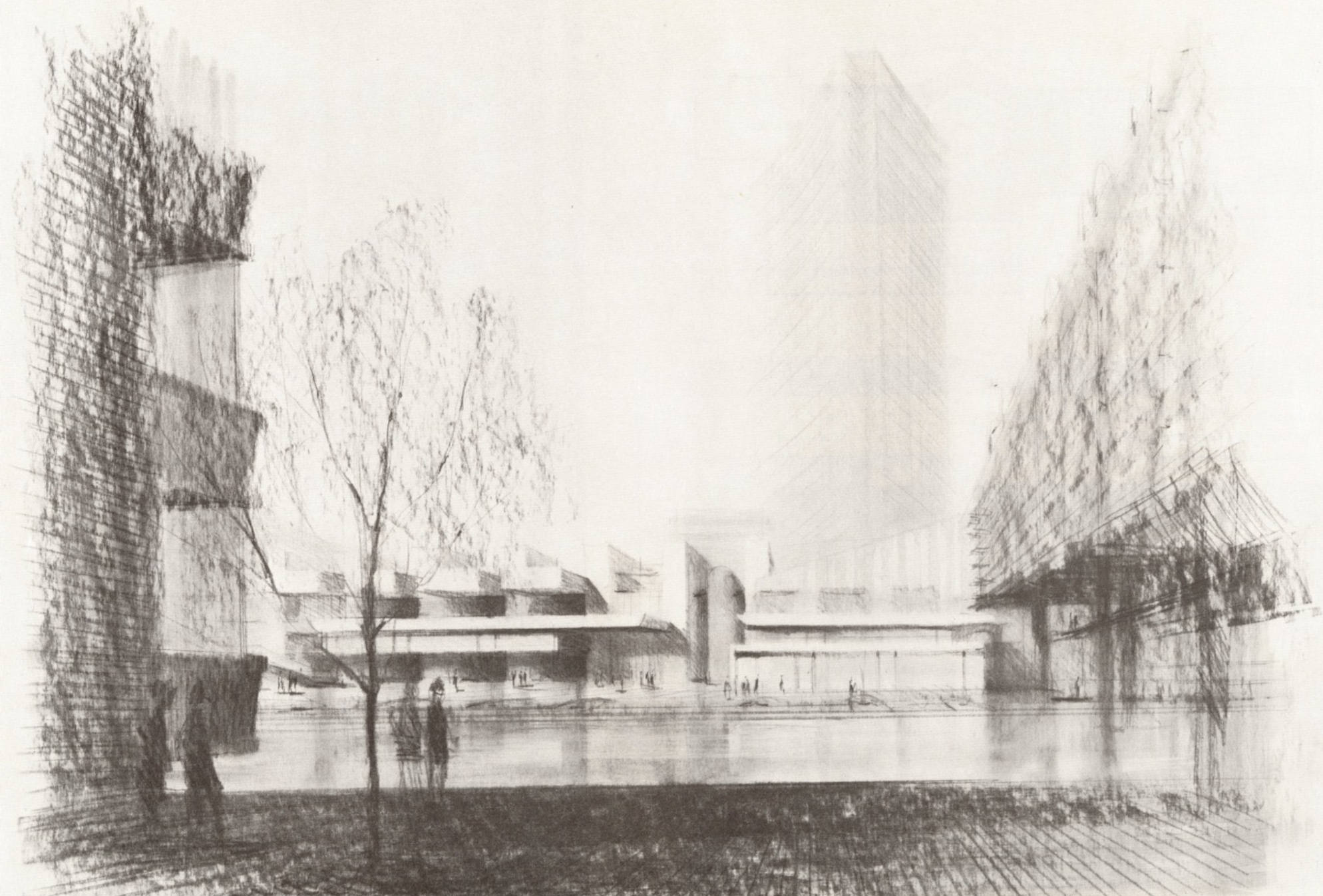
R.S.
C.P.&B. '59



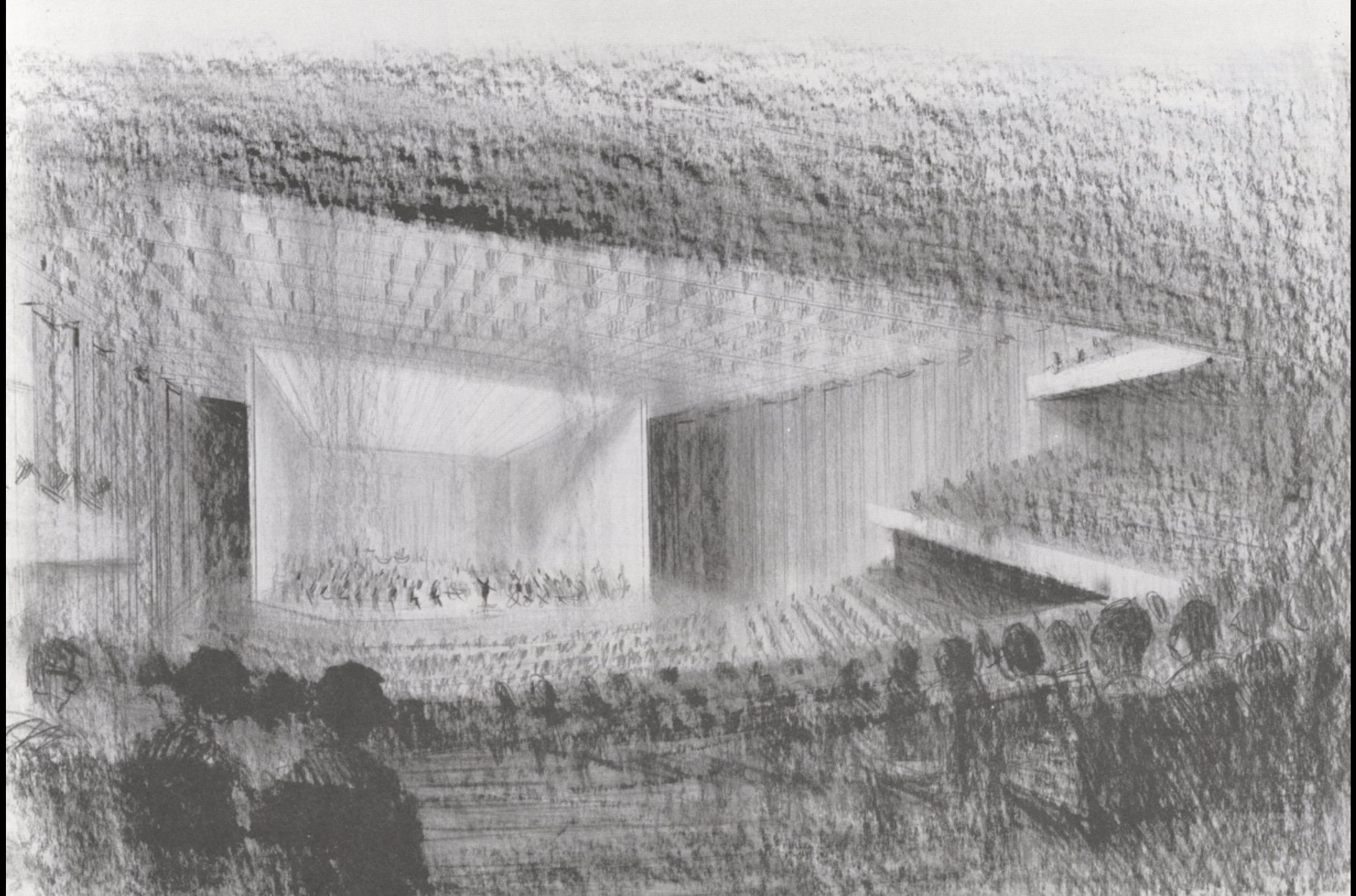
R.S.
C.P.&B. '59



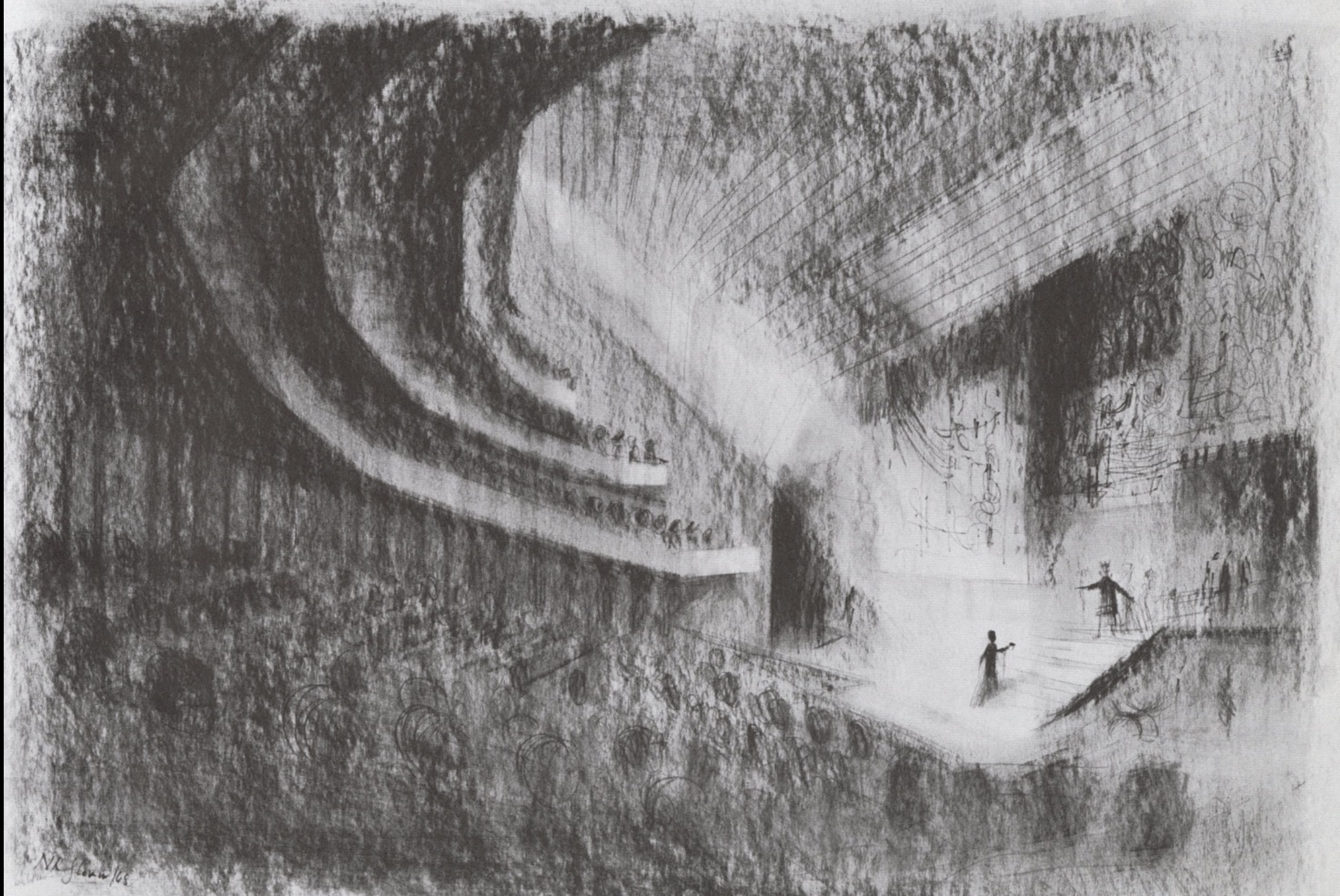
R.S.
C.P.&B. '59



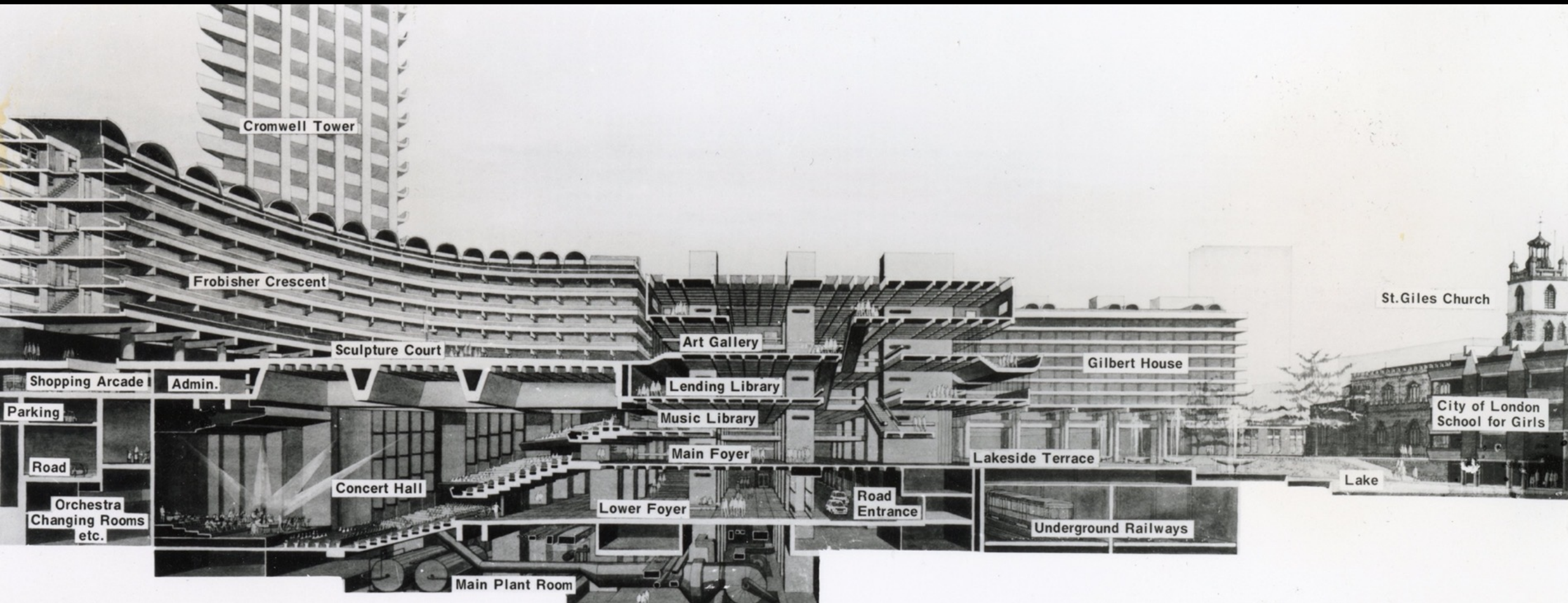
NR Llanos

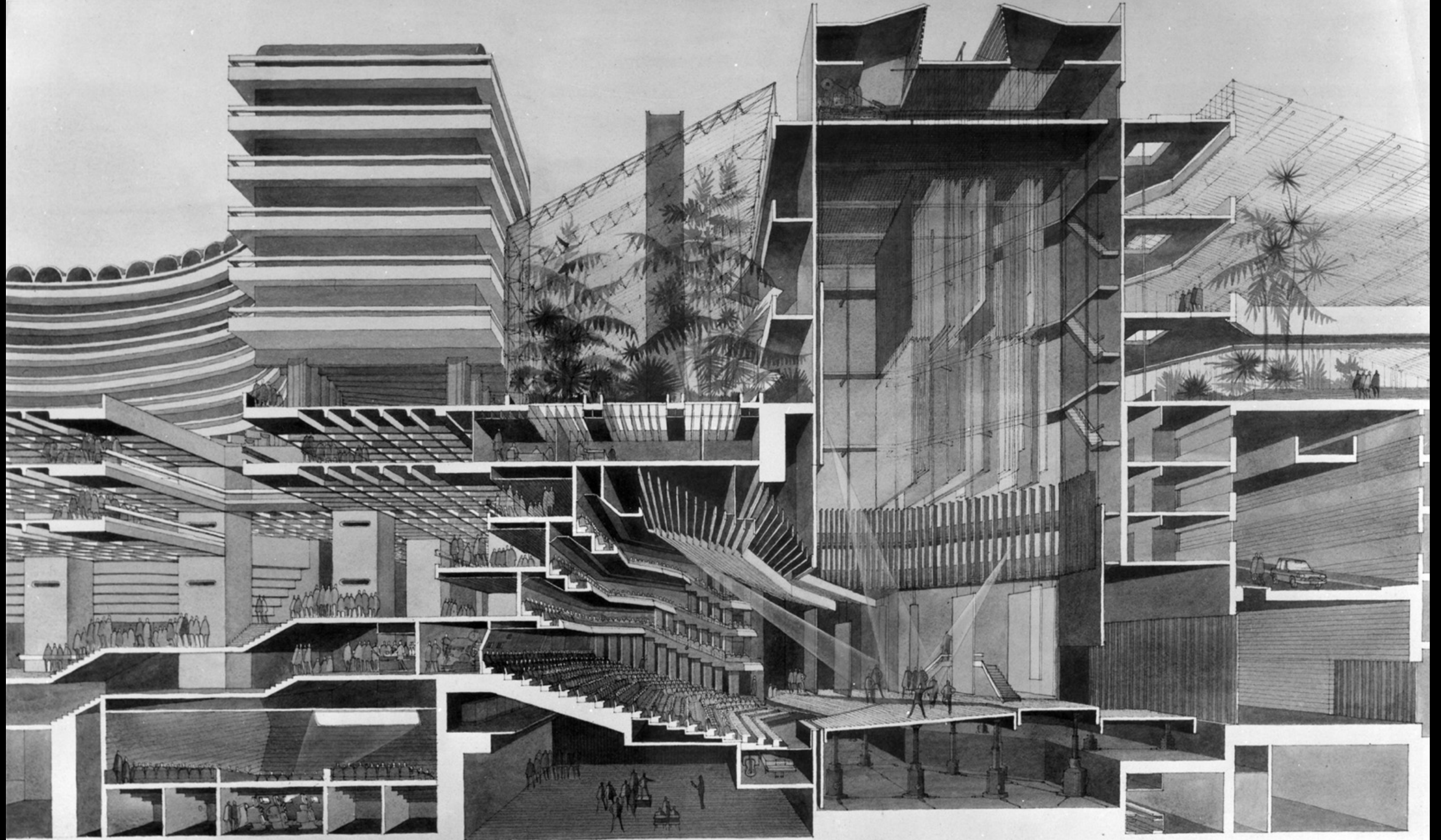


NR flow 108.

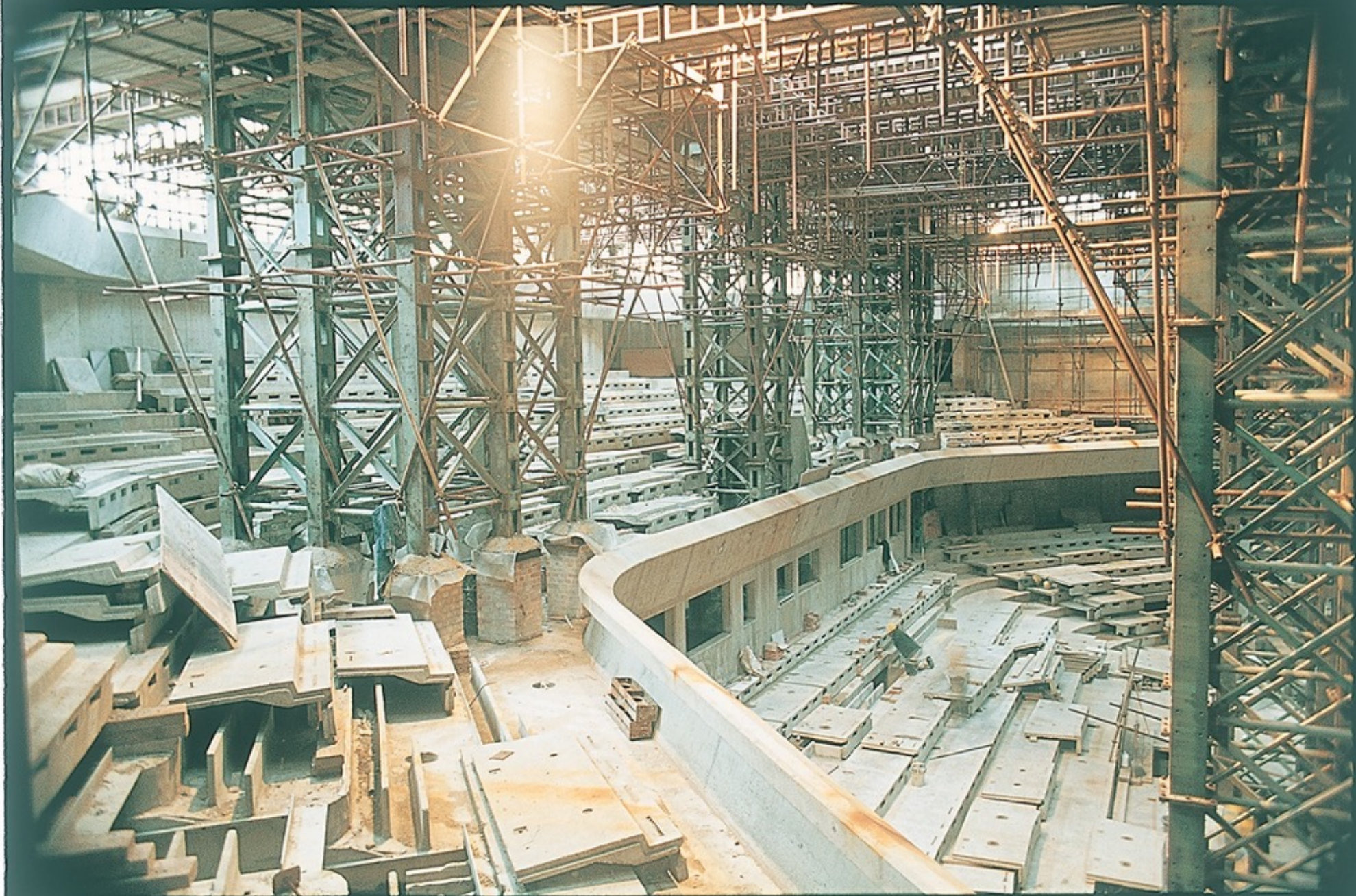


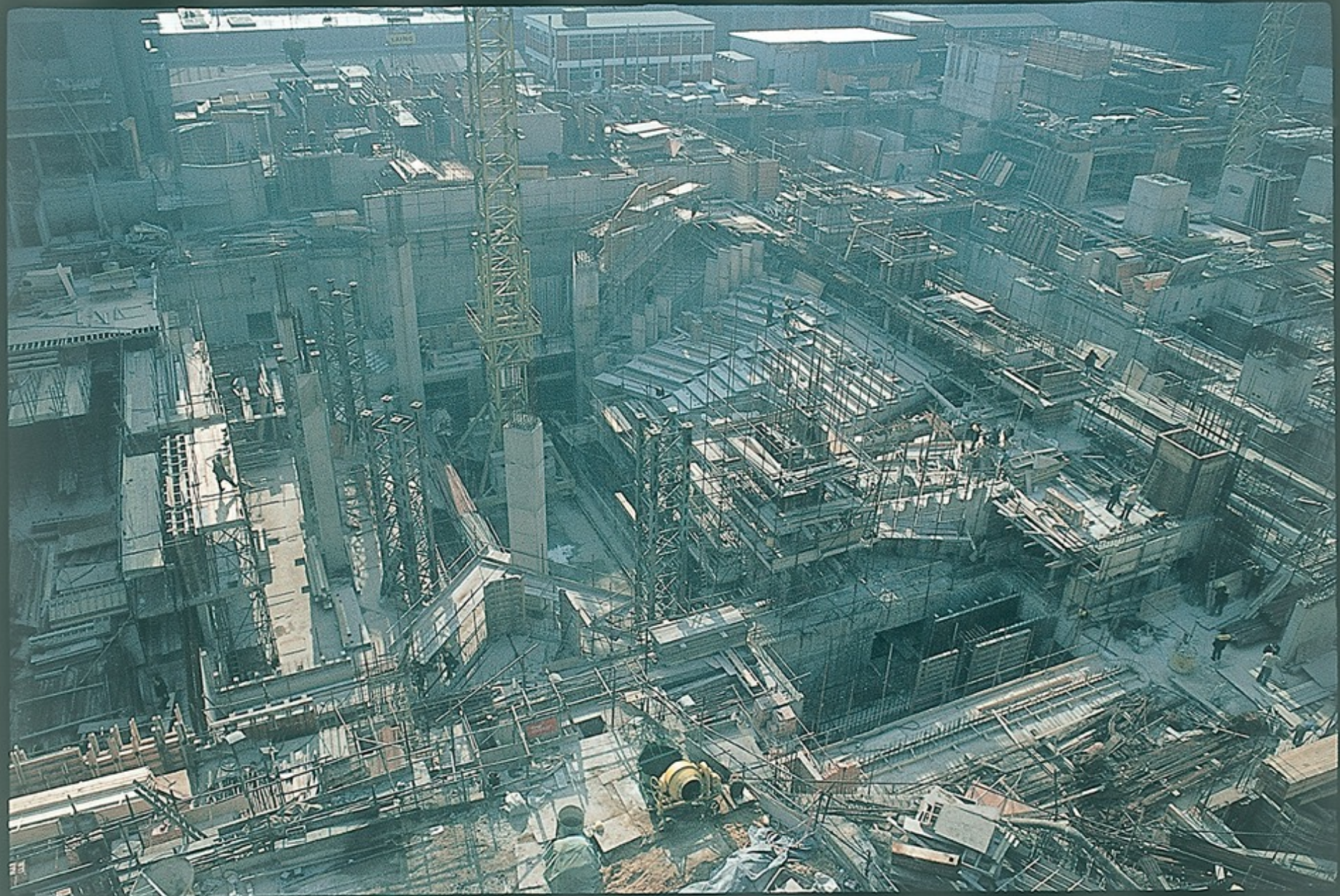
N. K. Glavin / 68















HER MAJESTY THE QUEEN
opened the Barbican Centre
for Art Conferences
on 1982

The Right Honourable Mayor
Sir C. D. M. P.



*'Have you tried
the Barbican?'*







cinemas 2 & 3
conference rooms
art gallery

↑

2 library
restaurant

↓

hall
curve
tickets
restaurants
theatre
cinema 1
pit

library
restaurant

3
1
2
G
N



Merce Cunningham choreography © Felix Clay



The Bride and the Bachelors © Felix Clay



Circa & Debussy String Quartet, Opus © Justin Nicholas





Rain Room © Felix Clay



Wayne McGregor | Random Dance perform in the Rain Room © Ravi Deepres and Alicia Clarke



Unleashed © Mark Allan



Leandro Erlich, Dalston House © Gar Powell-Evans



Leandro Erlich, Dalston House © Gar Powell-Evans



Diversity



barbican
nov 18

barbican
dec 18

This summer
the drinks are on us
£12* for a New Release ticket
plus a beer, wine or soft drink
every Thursday, July–August



cinemas

barbican

*Includes 45p booking fee

barbican
Parent and Baby
screenings
Don't miss the latest new release films,
Monday and Saturday mornings



Only 65*
per adult

barbican

*Includes 45p booking fee



barbican

Theatre & Dance
Jan–Jun 2019

barbican
Classical Music
2018–19



barbican

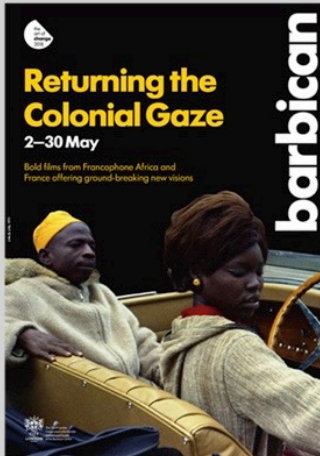
Contemporary
Music
Nov 2018–Jan 2019

Contemporary
Music
Sep–Oct 2018



barbican

Returning the
Colonial Gaze
2–30 May



Bold films from Francophone Africa and
France offering ground-breaking new visions

barbican

Boy Blue
Blak Whyte Gray
12–15 Sep



A galvanising hip-hop dance triple bill exploring themes
of identity, oppression and transcendence

★★★★ Observer, Scotsman
★★★★ Independent, Stage, Evening Standard

barbican

Generations
Russian Cinema of Change
26–30 Sep



Book now
Cinemat by the Barbican
in partnership with New Eye Cinema

barbican

Francis Upritchard
Wetwang Slack



27 Sep 2018 – 6 Jan 2019
Admission free

barbican

barbican
22–24 Oct
Australian
Chamber Orchestra
International Associate Ensemble
of Milan Court



A sublime rush of adrenaline
and orchestral heave
Guardian ★★★★★

Soar to the top of the world in the
jaw-dropping film Mountain, the heart
of the ACO's three-concert residency

barbican

ACO Australian
Chamber
Orchestra

Fierce,
bold and
affecting



barbican

Barbican Young Poets
A Change is Gonna Come
25–26 May

Boy Blue
A Night with Boy Blue
1–2 Jun

Michael Milroy / Avenue
Outlaws
24–25 Jun

Boy Blue
Blak Whyte Gray
12–15 Sep



Participation

Internationalism

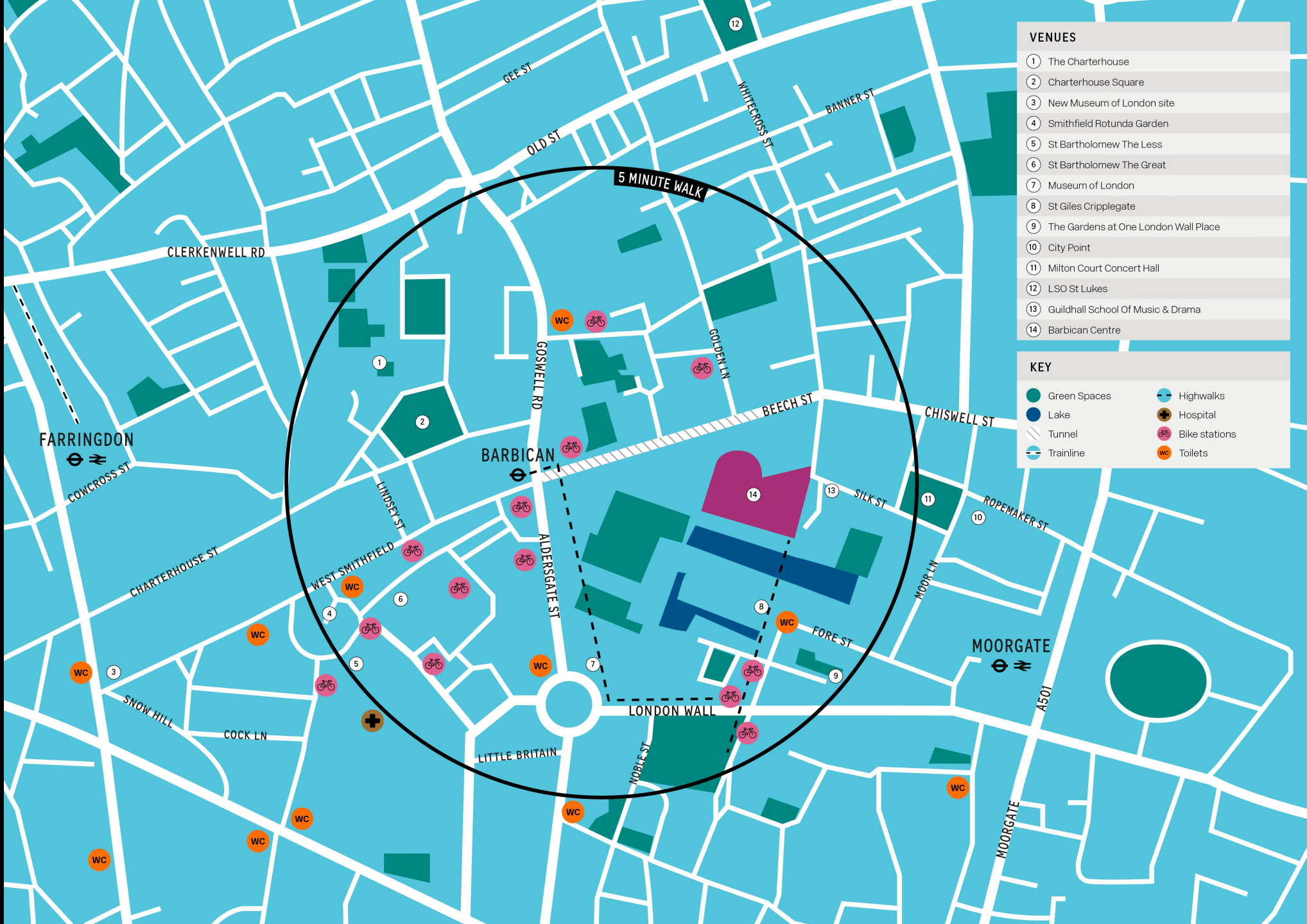
Artists from 48 nations

Ticket sales to 101 nations





Collaboration



VENUES

- 1 The Charterhouse
- 2 Charterhouse Square
- 3 New Museum of London site
- 4 Smithfield Rotunda Garden
- 5 St Bartholomew The Less
- 6 St Bartholomew The Great
- 7 Museum of London
- 8 St Giles Cripplegate
- 9 The Gardens at One London Wall Place
- 10 City Point
- 11 Milton Court Concert Hall
- 12 LSO St Lukes
- 13 Guildhall School Of Music & Drama
- 14 Barbican Centre

KEY

Green Spaces	Highwalks
Lake	Hospital
Tunnel	Bike stations
Trainline	Toilets



