

PRIVATE PALACES: THE MANSIONS OF THE MARLBOROUGHS

Professor Simon Thurley CBE





Sarah Duchess of Marlborough (Philip Mould Ltd) and John Duke of Marlborough (Cleveland Museum of Art)









Thomas Boleyn earl of Ormond and Wiltshire
The Royal Collection, Her Majesty the Queen.

**William Cecil,
1st Baron Burghley**





Monmouth on horseback as the commander of the Royal English in the early 1670s, Jan Wyck. Louis XIV owned a copy of this painting.



John Churchill, 1st Duke of
Marlborough

XXII
31-a

XX
31

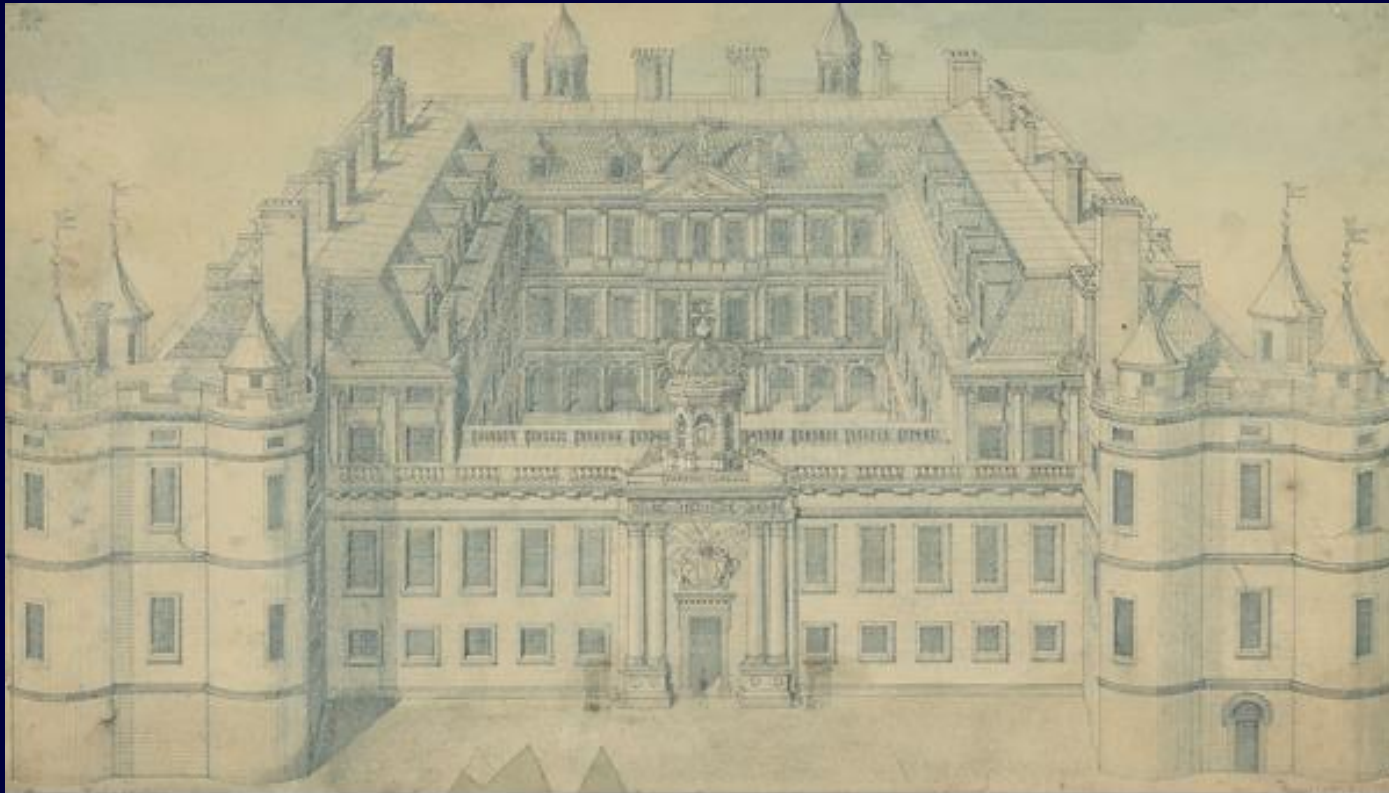


Printed by John Bowles, Print-Seller over against Stocks Market.

Sarah Churchill by
Bernard Lens 1720
V&A Museum







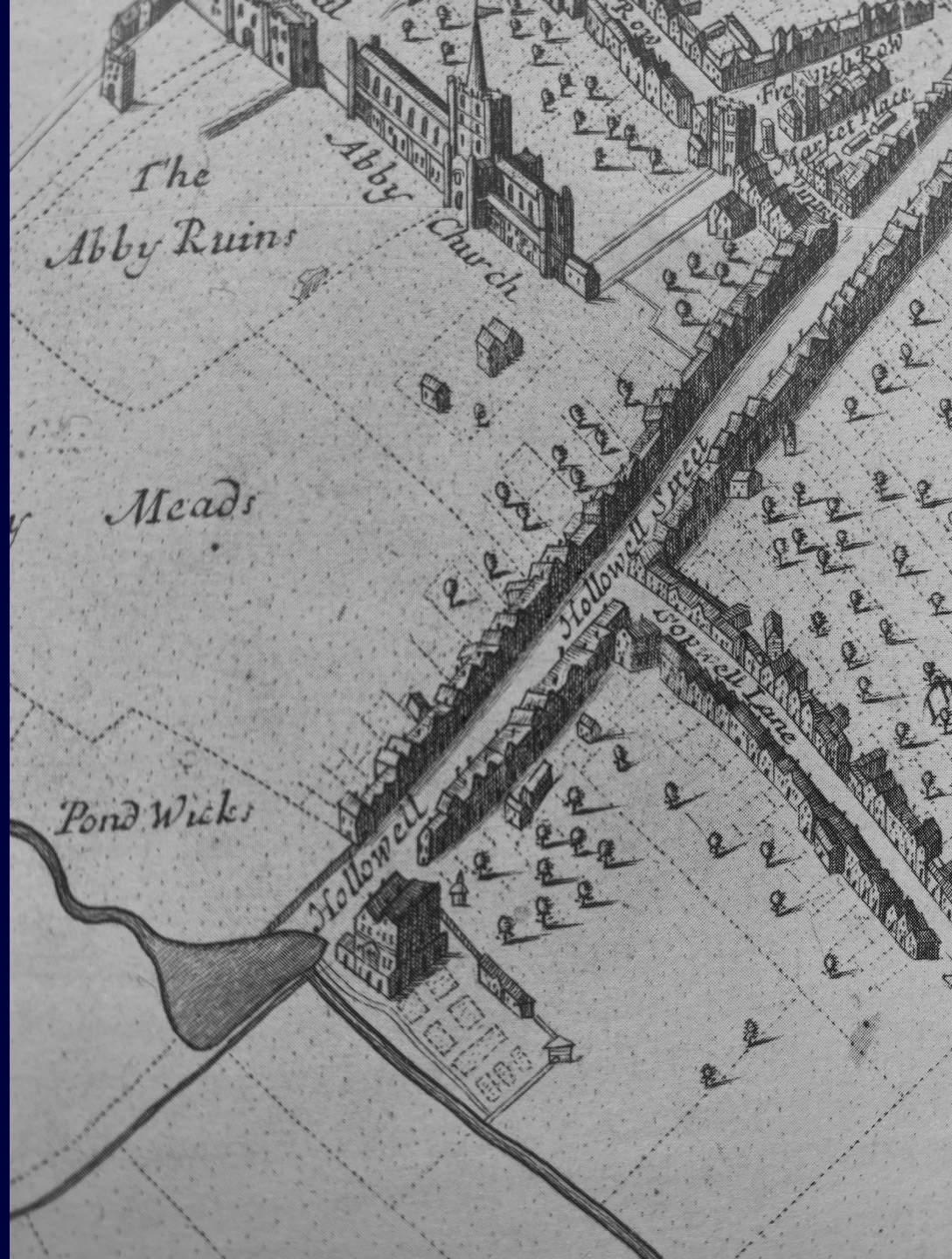
 NATIONAL GALLERIES SCOTLAND

Holyrood Palace Showing the Quadrangle, , Richard Cooper, the Elder

Creative Commons - CC by NC



Windsor Castle, the Chapel Royal from Pyne's Royal Residences.





MS 32351

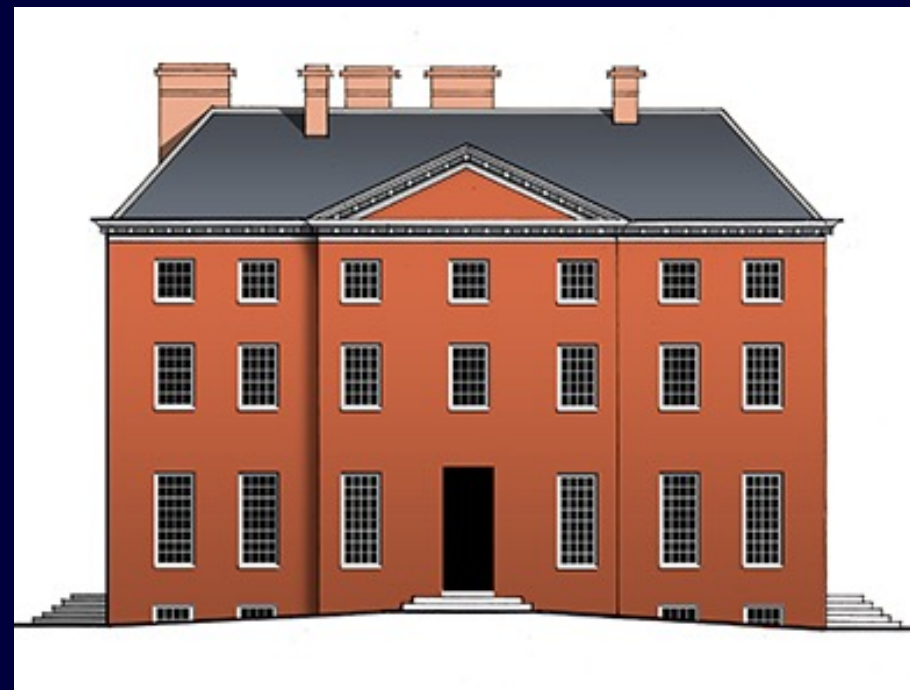
© British Library



MS 32351

© British Library



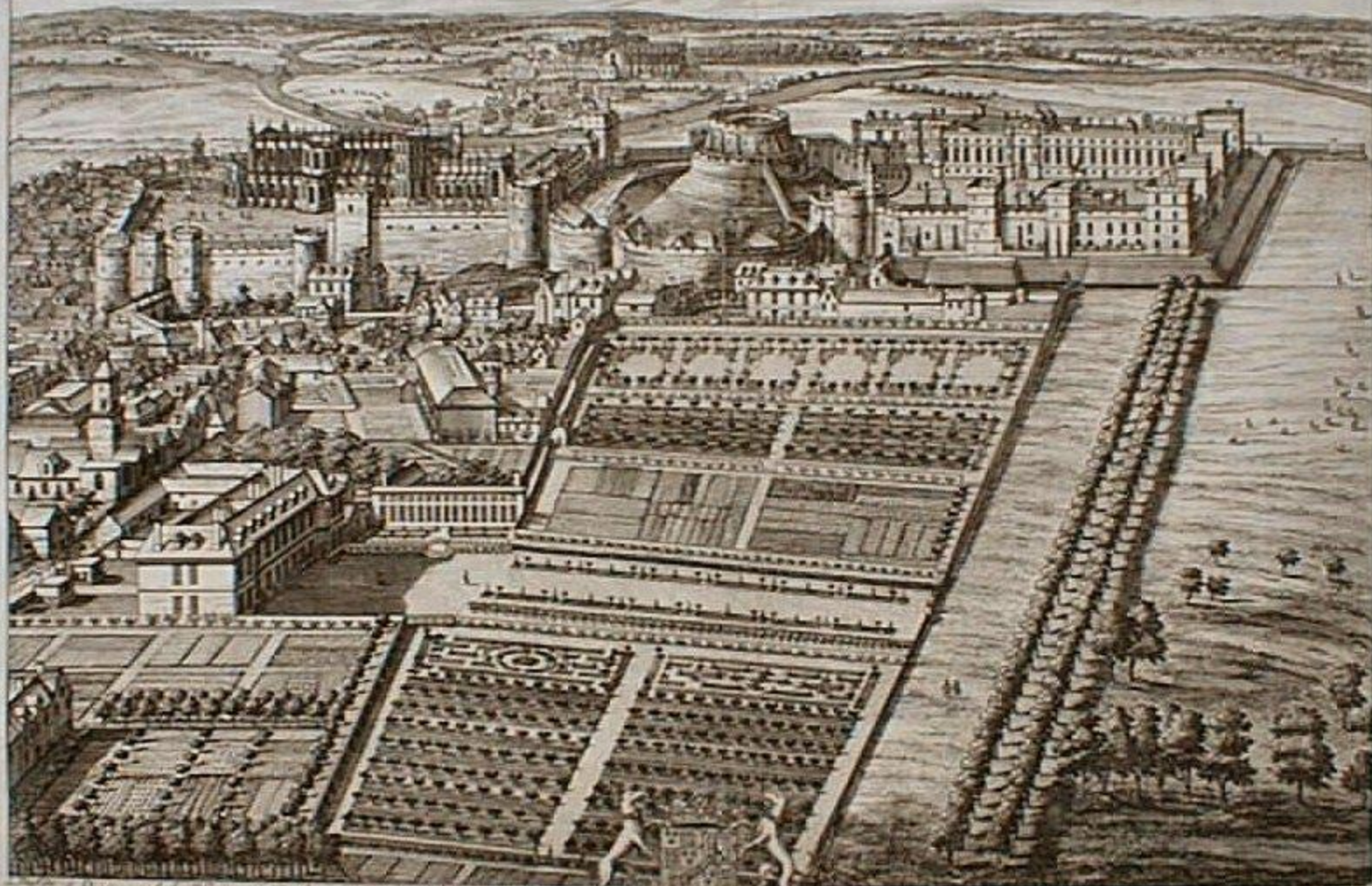


Holywell House (left) and The Duke of Monmouth's Moor Park as it probably was when first completed.



St. James's Palace and Parts adjacent.





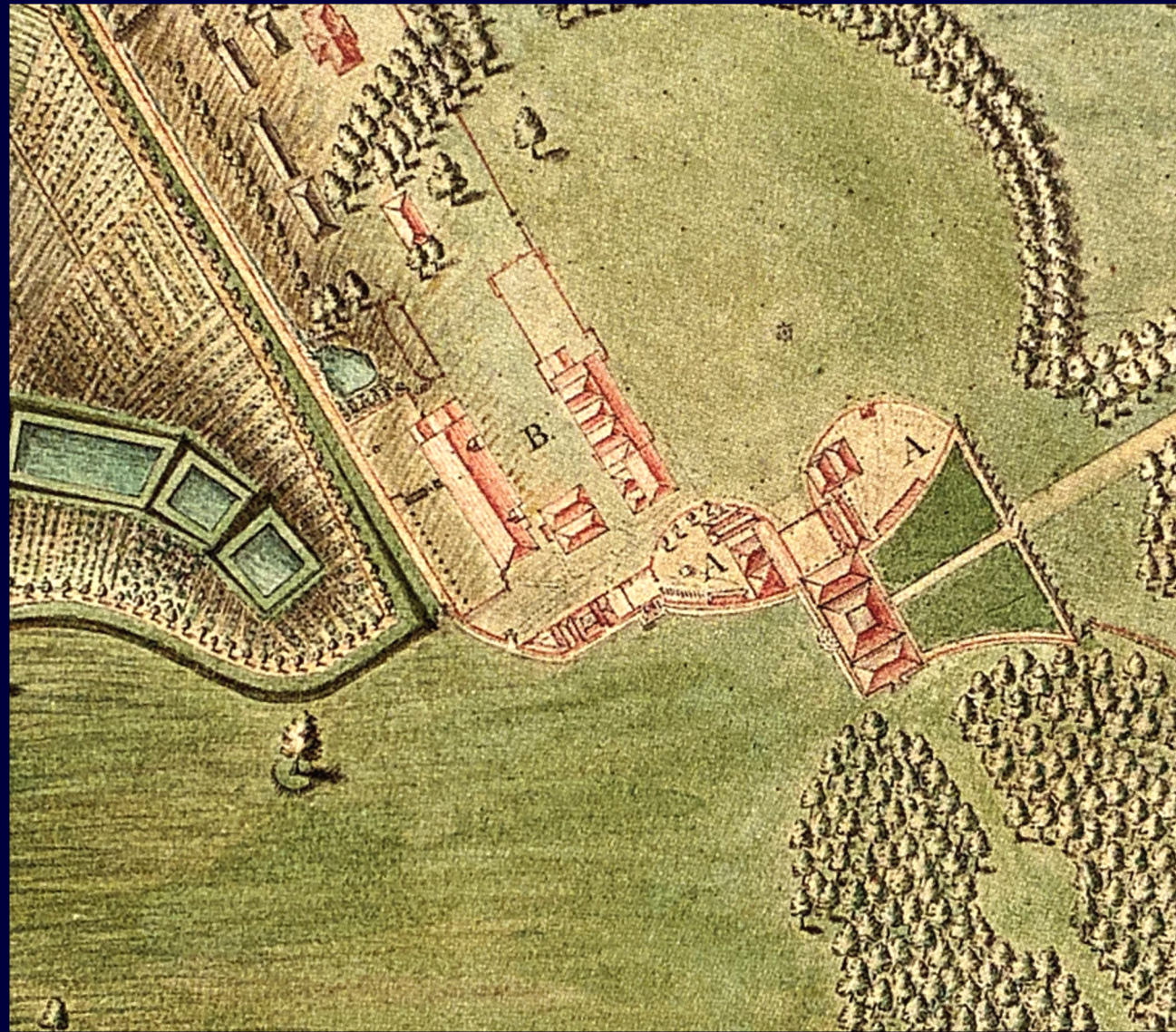
A Prospect of the Palace of Westminster, Engraving as by the Charter
 of the River of London, and the Palace of Westminster, March
 1704.

Beauchamp's View of St. Albans, Earl of Bedford, and Baron of
 all the Corners of the Kingdom to his Majesty's use of the Commons
 and Church.

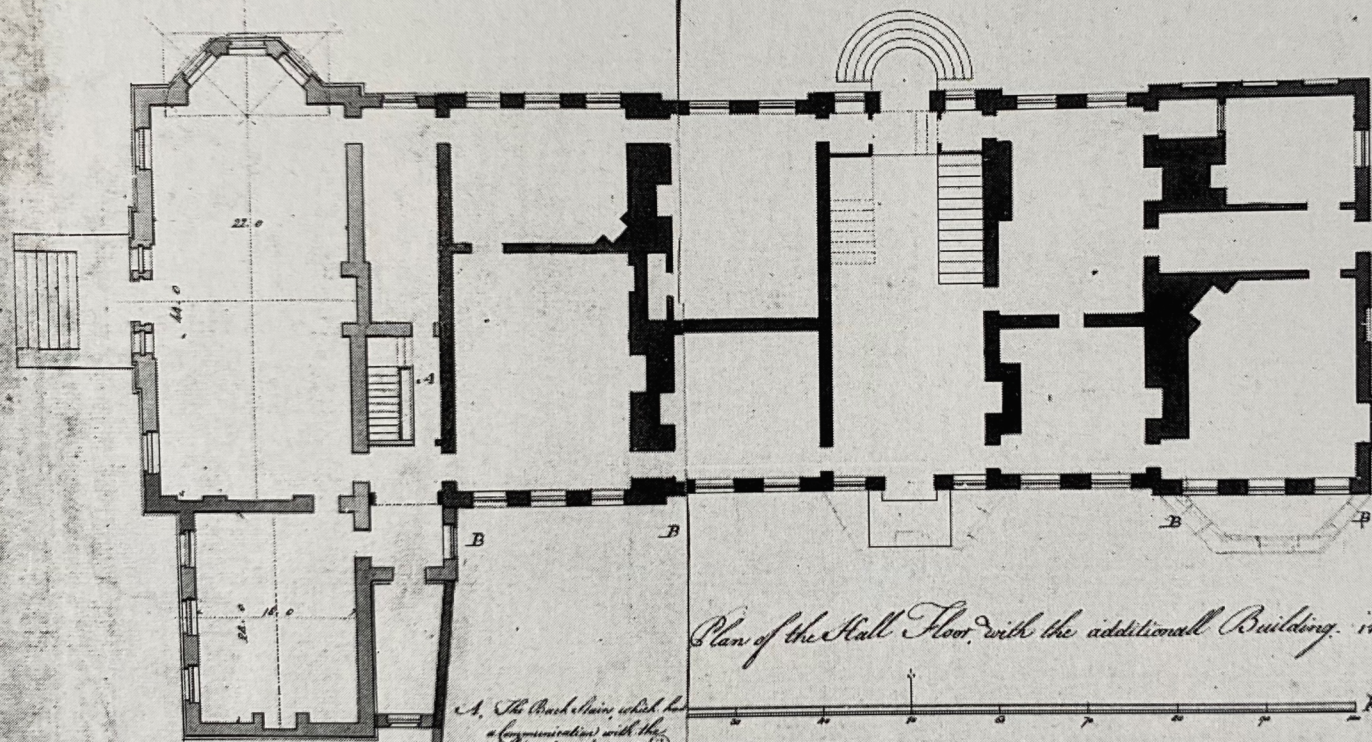


Thomas Sandby, The Great Lodge east front Royal Collection Her Majesty the Queen.

John Vardy plan
of area round
Great Lodge
Windsor. British
Library

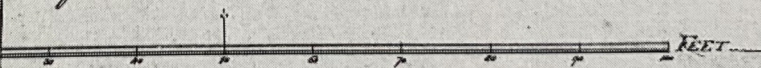


Windsor Great Lodge



Plan of the Hall Floor, with the additional Building, intended, by H. Pittcroft

A. The Back Stairs, which lead
to (communication) with the
Office, by an (underground)
Passage, under B.B.



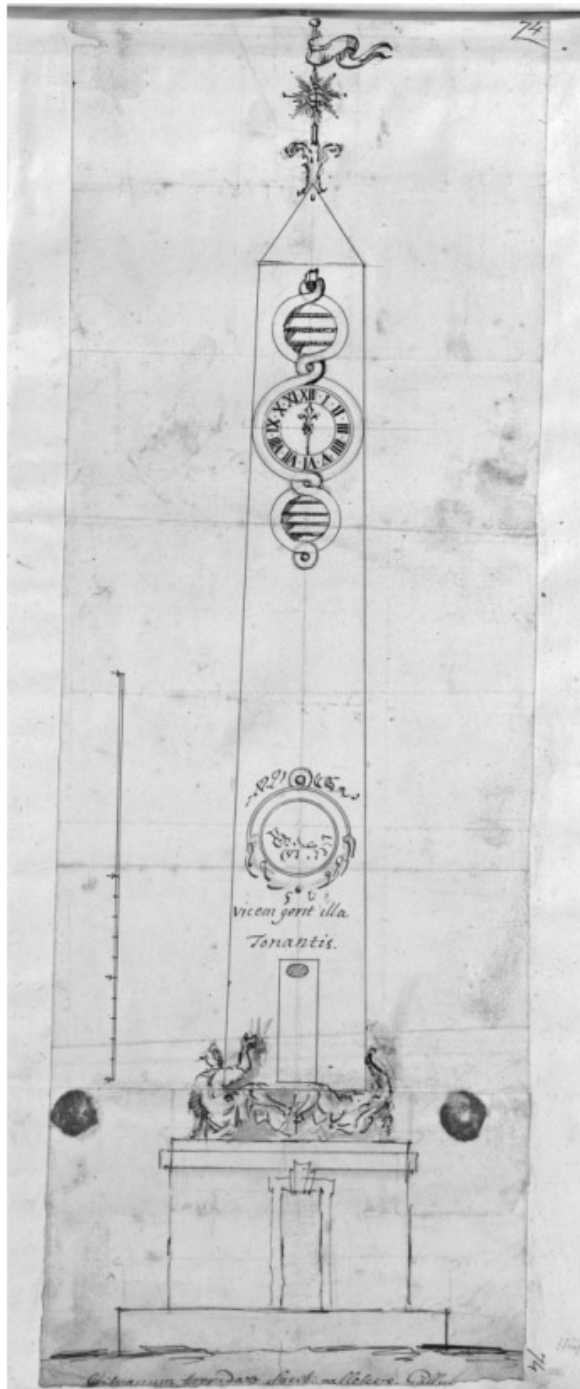
Sidney Godolphin



The Duke at the Battle of
Blenheim from a tapestry at
Blenheim Palace.







Design for an Obelisk to Commemorate
the Battle of Blenheim
Nicholas Hawksmoor

© Trustees of Sir John Soane's Museum



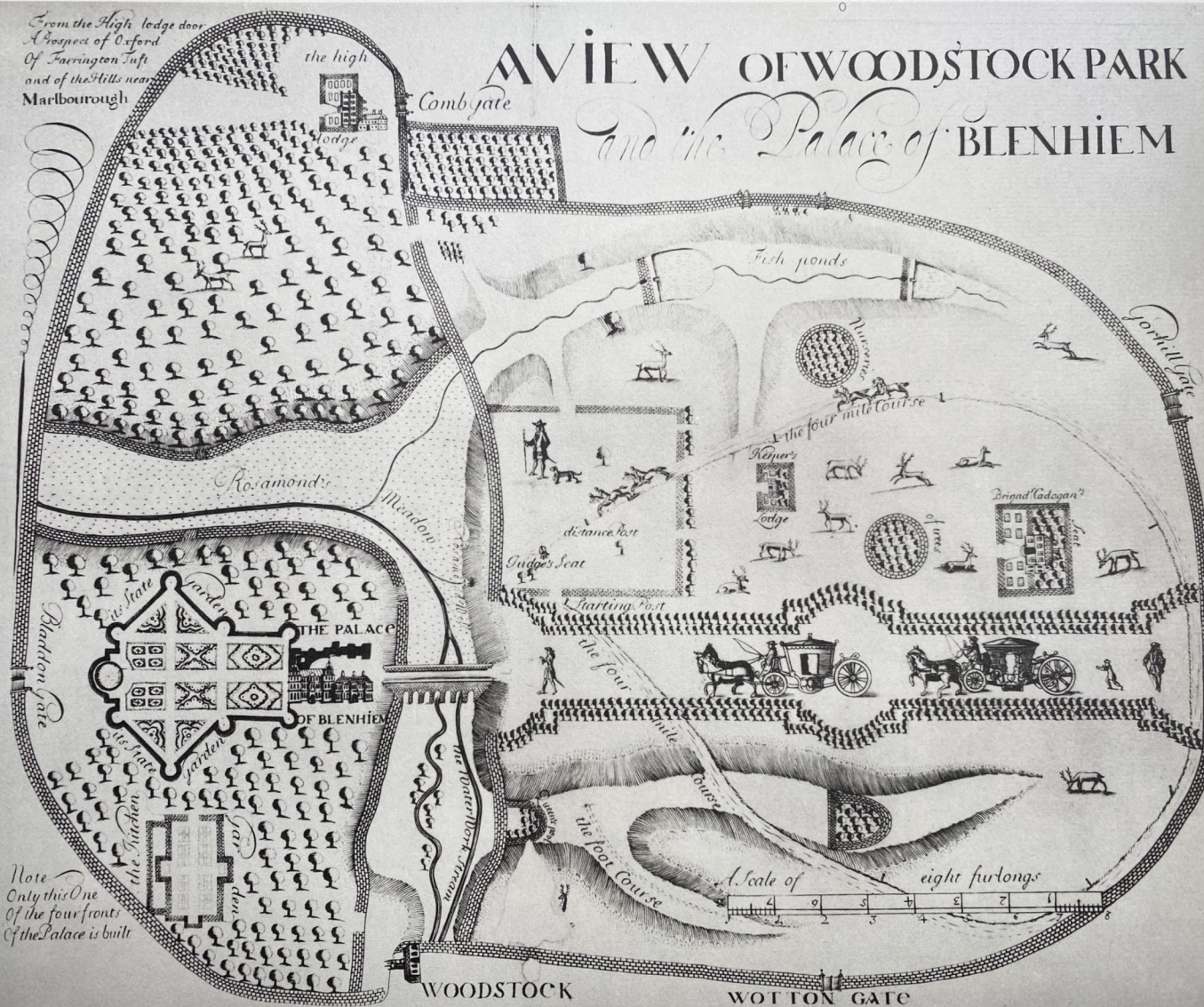
Sir John Vanbrugh, National Portrait Gallery

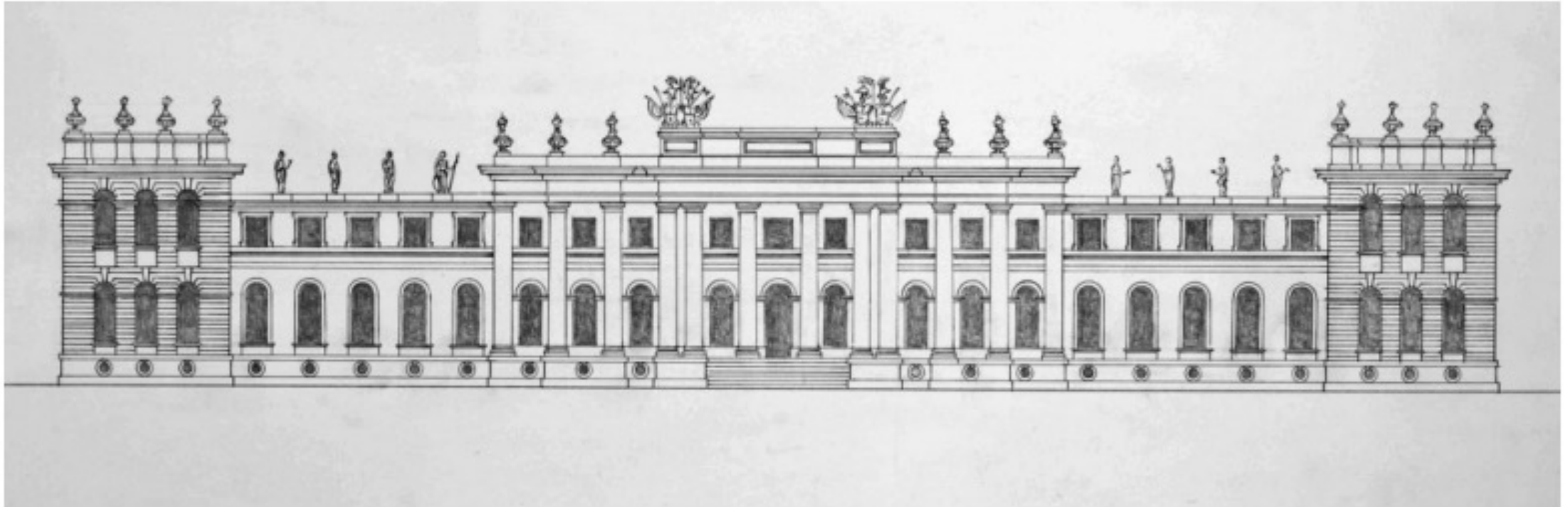




From the High lodge door
A prospect of Oxford
Of Farringdon Tuff
and of the Hills near
Marlbrough

AN VIEW OF WOODSTOCK PARK
and the Palace of BLENHIEM





© 2014 British Society for Eighteenth-Century Studies

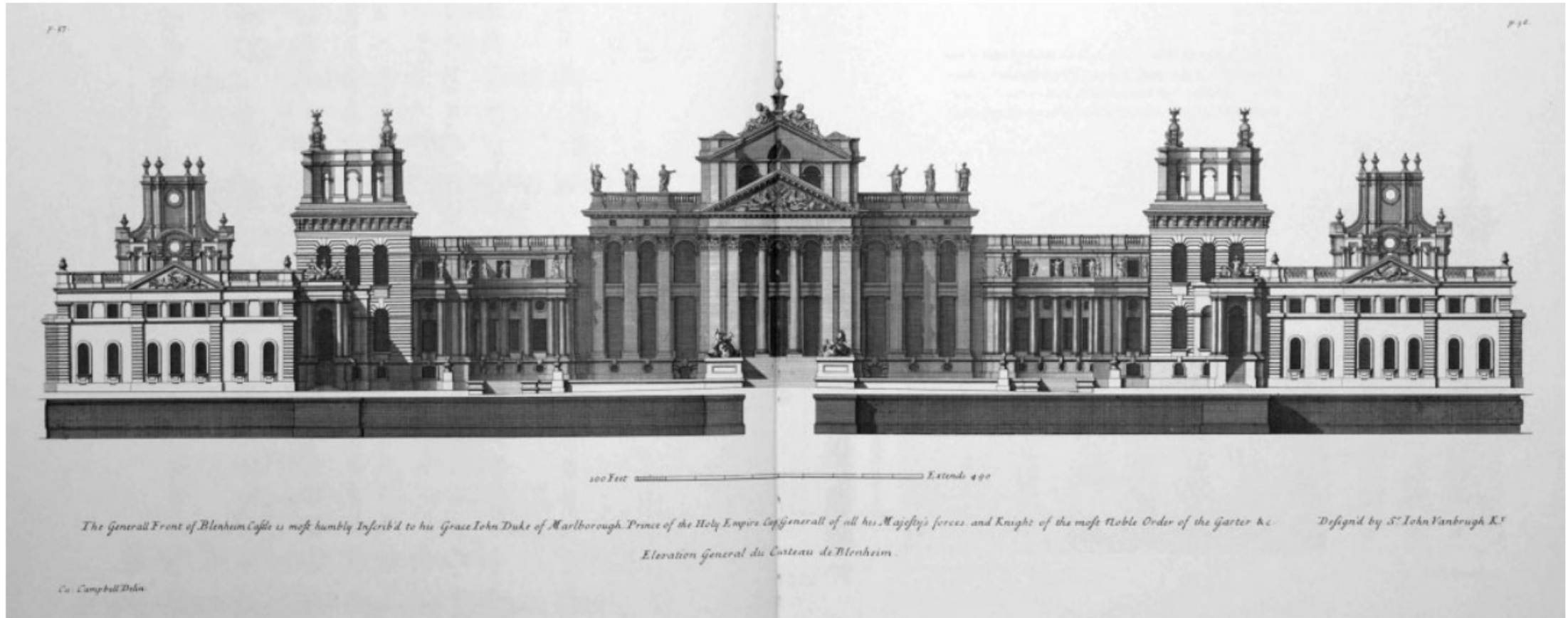


The Elevation of **BLENSHEIM** Palace towards the Gardens. It must
humbly be shew'd to his Grace **JOHN Duke of MARLBOROUGH** Prince
of the Holy **EMPIRE**, **Captain General** of all his **MAJESTY'S** Forces, and
Knight of the most Noble Order of the **Garter** as Invented by **Wm. Vanburgh Esq.**

Elevation Du Chateau de **BLENSHEIM** du Côté des Jardins.
Inventé par **M^r Le Vanburgh Chevalier**.

By **Campbell** Delin.

A Scale of 100 Feet.
Engraved 1725.



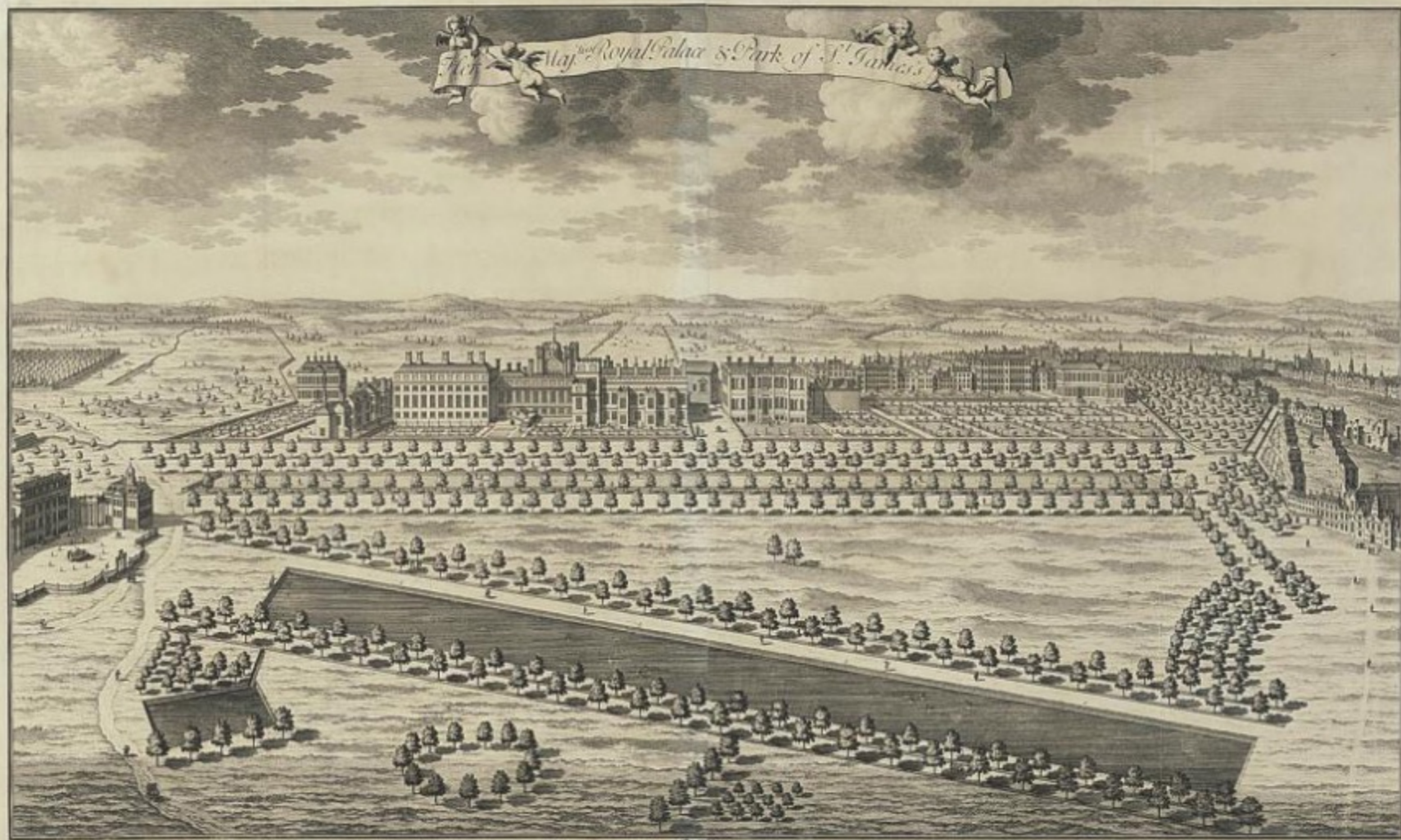
The General Front of Blenheim Castle
from *Vitruvius Britannicus*











To Her most Serene and most Sacred Majesty, ANNE by the Grace of God QUEEN of Great Britain, France & Ireland &c.









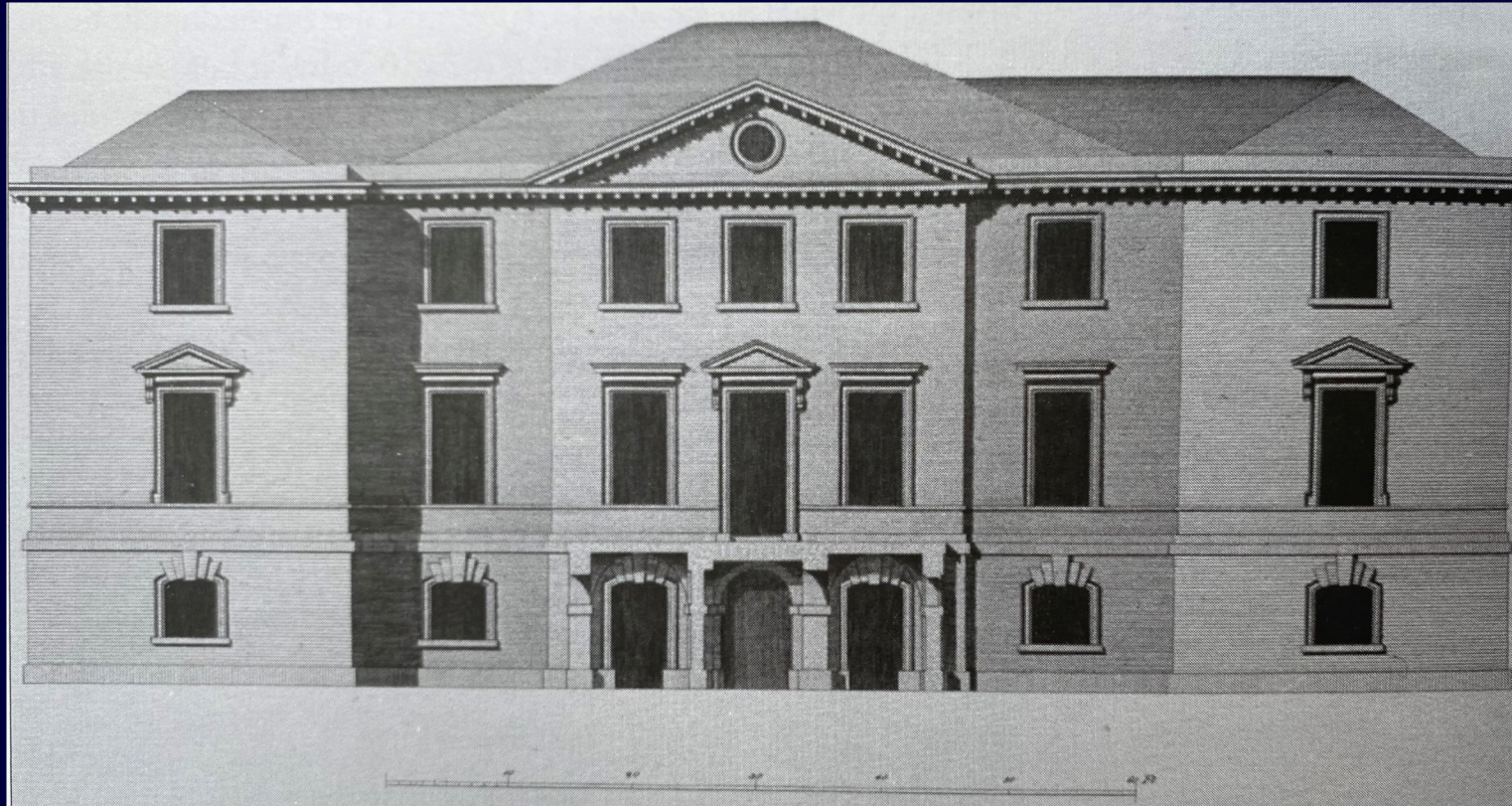


Queen Anne Presenting the Plans of
Blenheim to Military Merit
Sir Godfrey Kneller, c.1708-10

© Bridgeman Art Library



To
The Memory
of
QUEEN ANNE
Under Whose Auspices
JOHN DUKE of MARLBOROUGH
Conquered
And to Whose Magnificence
He And His Posterity
with Gratitude
Own the Dedication
of
BLENNHEIM
A. D. MDCCXXXV.



The Duchess of Marlborough's house at Wimbledon by Roger Morris.

The Triumph of John,
1st Duke of
Marlborough
John Closterman
The Royal Hospital
Chelsea





