



REMEMBERING GRESHAM COLLEGE IN YOUR WILL

GRESHAM COLLEGE

For the Love of Learning since 1597



EST. 1597

GRESHAM
COLLEGE



"Gresham has been a pillar for my professional development. Hopefully over the years I will be able to commit much more to such a worthy cause as education for all"

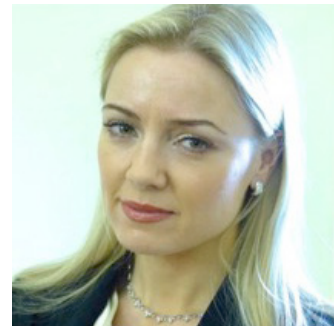
Gresham College Donor



Gresham College was founded in 1597 thanks to a bequest in Sir Thomas Gresham's will. It was because of his visionary outlook that we have been able to offer free public lectures of the highest academic quality to learners of all ages and backgrounds for over 400 years.

We are very grateful to those who choose to follow in Sir Thomas' footsteps and leave a gift in their will to support Gresham College's future.

Dr Loyd Grossman,
Chair of Gresham College Council



"Leaving a gift in your will to a charity is an incredibly meaningful decision. It is a real demonstration of how much you cherish an organisation and how committed you are to supporting its future.

We want many more people – from a broader range of backgrounds and ages - to benefit from the outstanding education Gresham offers free of charge. You can help us achieve that goal."

Dr Wendy Piatt,
CEO of Gresham College



"No matter how large or small, a gift in your will to support Gresham College is a true marker of your belief in our work and our mission to make world-class knowledge freely accessible to the public. Thank you."

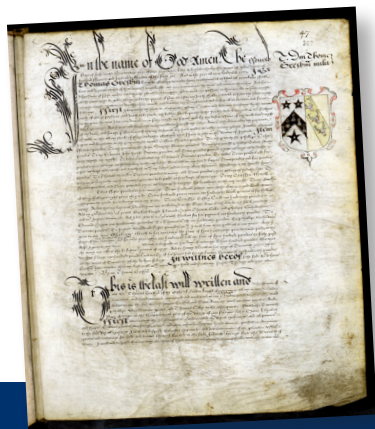
Professor Simon Thurley,
Provost of Gresham College

THE IMPACT OF SUPPORTING GRESHAM COLLEGE

Gresham College would simply not exist today had Sir Thomas Gresham not left the necessary provisions in his will. Since 1597, the College's founding sponsors - the Mercers' Company and the City of London Corporation – have fulfilled Sir Thomas' bequest and his vision for accessible education. As an institution, we exemplify the impact you can have by making a charitable donation in your will.

Gresham College's core principle has remained unchanged for over 400 years: world-class education should be accessible to all. Our lectures, talks and videos are available free of charge to the public.

Whilst our mission remains the same, the way Gresham College delivers this work has evolved and expanded significantly since our inception. We now operate in a global community, where Gresham lectures and videos can be enjoyed all over the world. Alongside Sir Thomas Gresham's legacy, support from individuals helps the College to go above and beyond our core offering and expand its reach.



*Last Will & Testament
of Sir Thomas Gresham*



Sir Thomas Gresham

By supporting Gresham, you enable us to adapt to the ever-changing landscape around us. With your help we can:

- Share world-class knowledge with every corner of the world
- Reach audiences who can benefit most from free education
- Recruit the brightest minds as Gresham Professors and speakers
- Ensure more schools and pupils benefit from the outstanding lectures & videos the College provides free of charge
- Enhance our academic programme by innovating and trying out new formats and subject areas to appeal to as broad an audience as possible
- And so much more...

A gift to Gresham in your will is a gift of education for all

TYPES OF GIFTS IN WILL

No matter your health or financial situation, it is important to make a will, with the help of a solicitor or legal adviser. A will is the only way to be sure that your assets go where you intend them.

To support Gresham College in your will, the two most common types of gifts are:

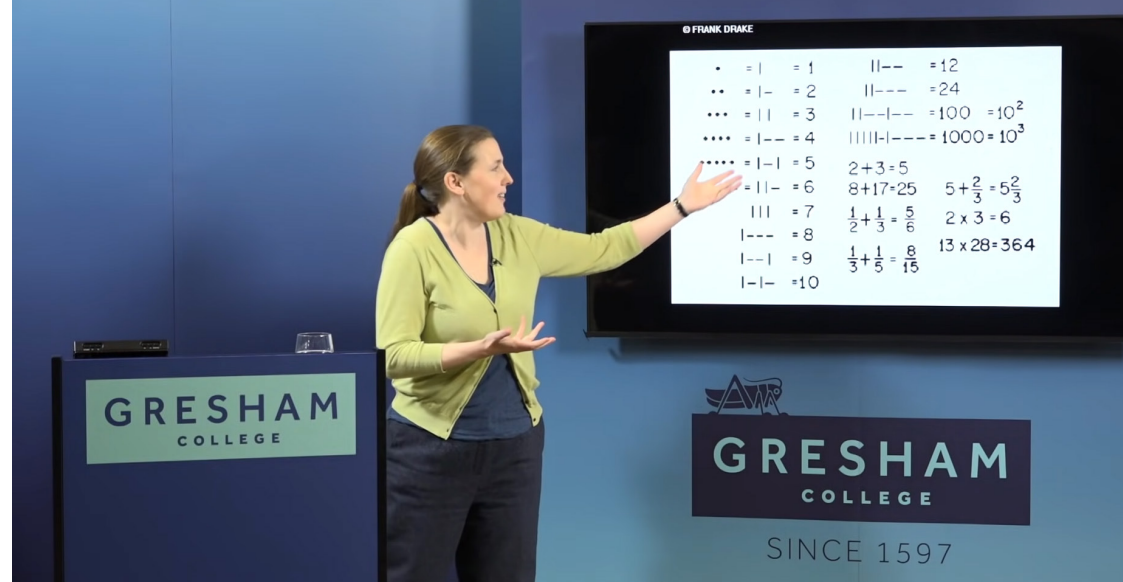
Residuary gifts – leaving a percentage, or sometimes all, of an estate after all other payments have been made.

Pecuniary gifts – leaving a specific sum of money.

We recommend that you explore all options with your solicitor. It is important that the gift is described precisely in your will so that the executors are clear on what you intended.

You may also wish to leave a particular item, also known as a **specific legacy**, which can either be sold or used by the recipient. Should you wish to leave a specific legacy, we would recommend contacting our team (see last page for contact details) so we can discuss your wishes and the suitability of the gift.

If you are looking for guidance on how to write your will, you can visit **Citizens Advice** (www.citizensadvice.org.uk) or **Will Aid** (www.willaid.org.uk) for further information. If you are a member of a trade union, you may find that the union offers a free will writing service.



Gresham Professor of Geometry, Sarah Hart on 'Where do Mathematical Symbols Come From?'



Professor Vernon Bogdanor CBE,
Emeritus Gresham Professor of Law



Professor Anand Menon,
Visiting Speaker

"So many wonderful and stimulating lectures. This project must be supported and deserves every penny."

Gresham College Donor



Sir Christopher Wren,
Gresham Professor of Astronomy
(1657)

“Our pupils come from some of the most economically deprived wards. We actively support our sixth form pupils to learn beyond the curriculum. I was delighted therefore when the Gresham publicity material arrived in my pigeonhole. The lectures had a wide variety of interesting subjects that supported intellectual curiosity and more importantly they were free. I actively encouraged all pupils to attend independently. We want to instill in them that learning does not have always involve a teacher and to show independence of thought and explore new ideas.”

Teacher



Professor Heather Couper,
Gresham Professor of Astronomy
(1993-1996) and Gresham's
first female Professor.



Professor Chris Whitty,
Gresham Professor of Physic
(2018-2022)

INHERITANCE TAX AND TAX RELIEF

Leaving a gift to charity in your will can help reduce, or even remove, the tax burden on your estate. Your solicitor will be able to explain how the Inheritance Tax rules apply to you and your particular circumstances.

WHAT IS INHERITANCE TAX?

Inheritance tax (IHT) is charged at a rate of 40% on estates over the IHT threshold. The threshold is currently set at £325,000 which means that any part of your estate above that value may be taxed.

WHAT ARE THE TAX BENEFITS OF LEAVING A GIFT IN YOUR WILL TO CHARITY?

Charities registered in the UK are exempt from Inheritance Tax so a gift in your will can reduce the taxable value of your estate, whilst benefitting a good cause.

Leaving a gift of 10 per cent or more of the net value over the IHT threshold to charity also reduces the rate of IHT on your estate from 40% to 36%.

To ensure you will is drafted correctly to take advantage of the reduced IHT rate, we strongly advise you consult your solicitor.

EXAMPLE OF TAX BENEFITS

Total value of estate	Proportion of taxable estate given to charity	Amount given to charity	Tax rate	Amount paid in tax	Amount given to loved ones
£825,000	0%	£0	40%	£200,000	£625,000
£825,000	10%	£50,000	36%	£180,000	£595,000

INFORMATION FOR YOUR SOLICITOR AND SUGGESTED WORDING

To include Gresham College in your will, you will need to take the following details to your solicitor:

- **Charity name:** Gresham College
- **Registered charity number:** 1039962
- **Registered address:** Barnard's Inn Hall, Holborn, London, EC1N 2HH.

An example of some suggested wording you could use to support Gresham in your will:

'I leave [insert fixed amount] or [insert specified percentage of my residuary estate] to Gresham College, Barnards' Inn Hall, Holborn, London, EC1N 2HH, registered charity number 1039962, for its general charitable purposes. I declare that the receipt of an authorised officer shall be a full and sufficient discharge to my personal representative.'



Professor Alec Ryrie,
Gresham Professor of Divinity
(2018-2022)

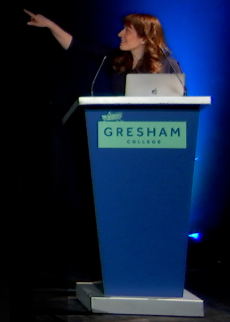


Professor Leslie Thomas QC,
Gresham Professor of Law
(since 2020)



"It's wonderful to have access
to such an array of expertise
and diverse lectures"

**Gresham College
Audience Member**



Gresham Professor of Astronomy, Katherine Blundell OBE on 'Structures in the Universe'

CONTACT US IF YOU HAVE ANY QUESTIONS

Your will is personal and it's entirely up to you if you wish to share this information with Gresham College. If you do choose to tell us, we'd love to be able to thank you properly and to let you know how your gift will make a difference.

If you have any questions or would like help with the process, please contact enquiries@gresham.ac.uk or call **020 7831 0575** and a member of the team will get back to you as soon as possible.

A gift to Gresham in your will is a gift of education for all



Thank you for thinking about
remembering Gresham College
with a gift in your will.

Gresham College
Barnard's Inn Hall
Holborn
London
EC1N 2HH



EST. 1597

GRESHAM
COLLEGE