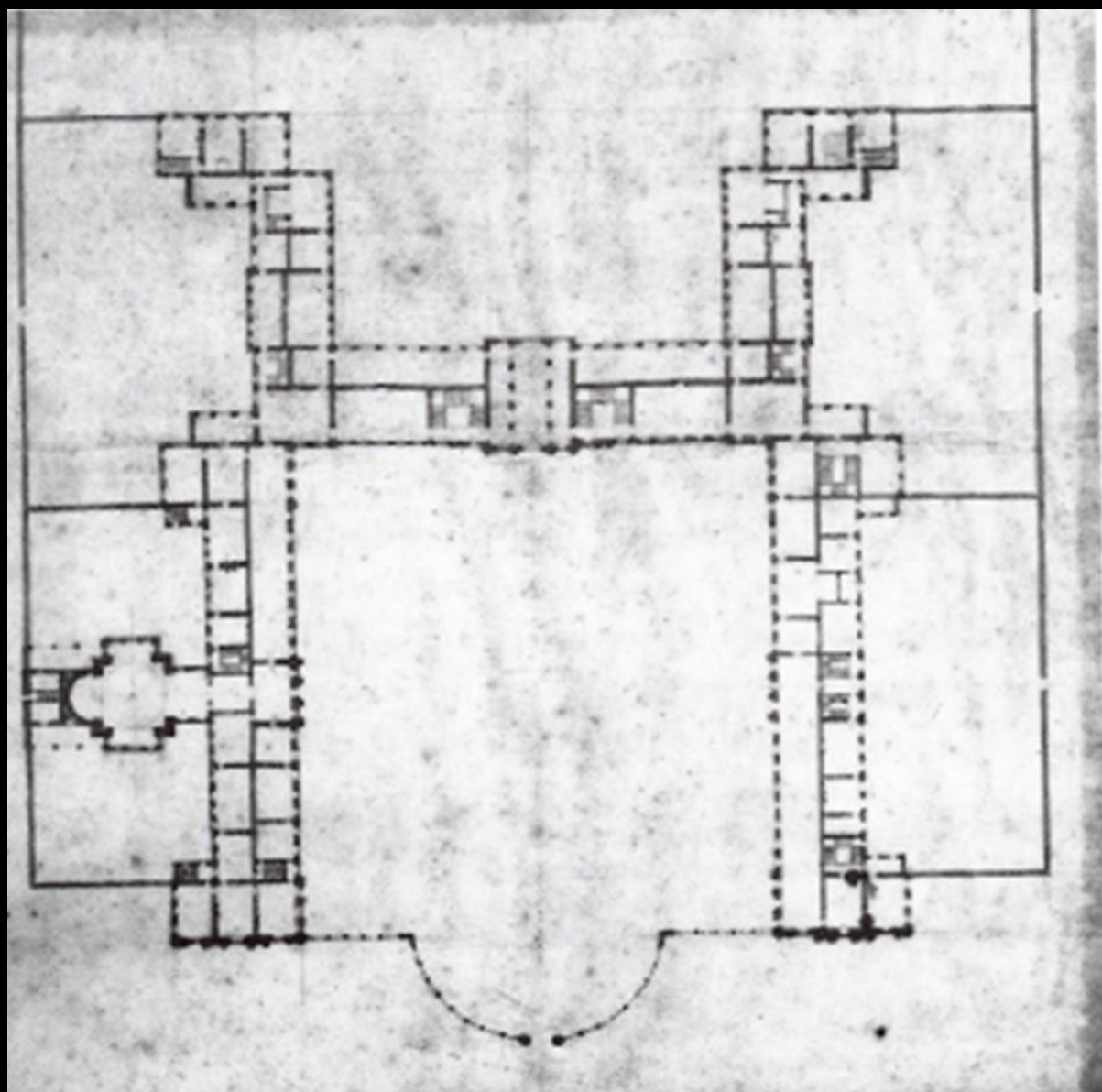


Restoration and Reaction. Palaces of the Restoration.





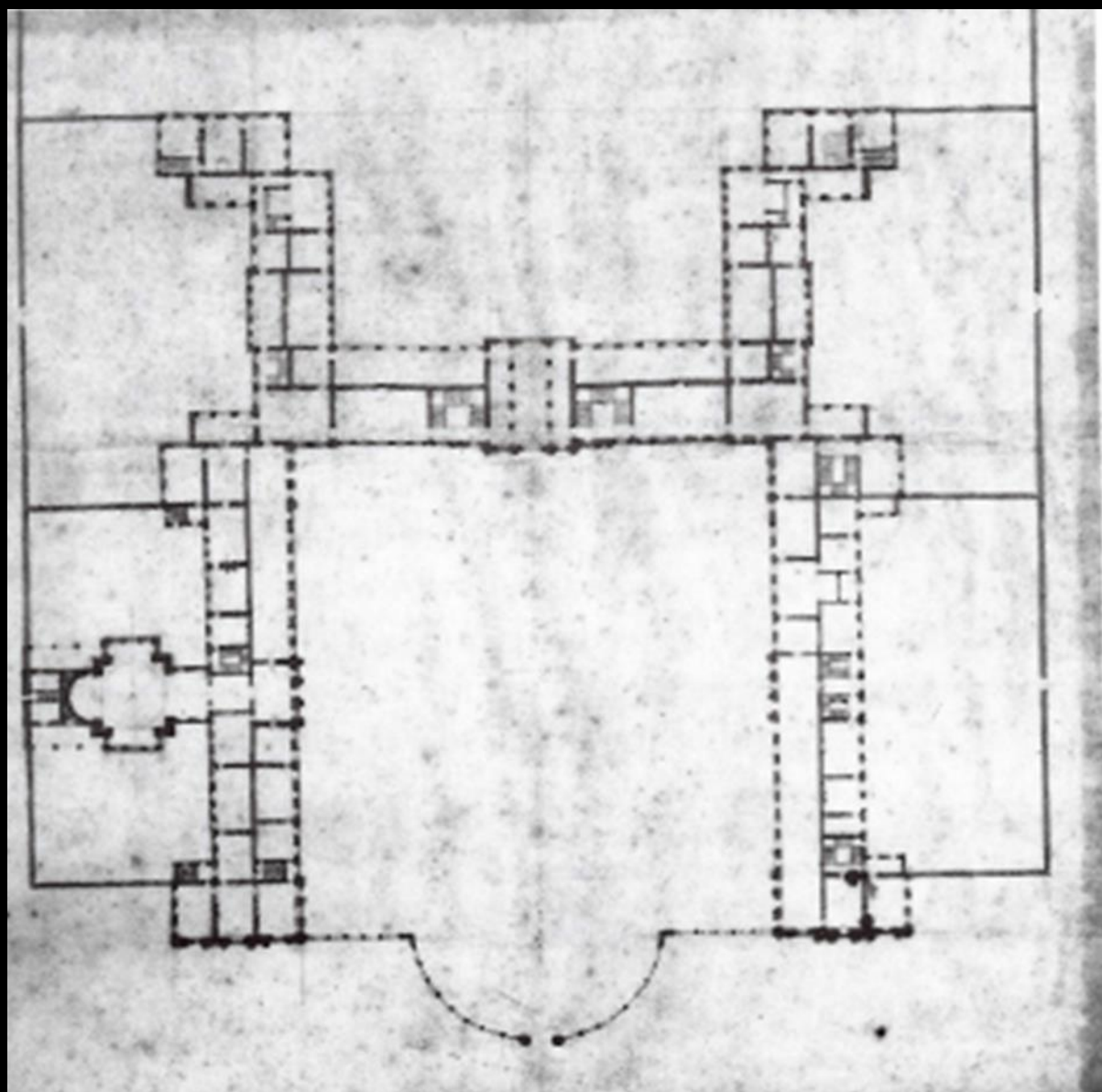


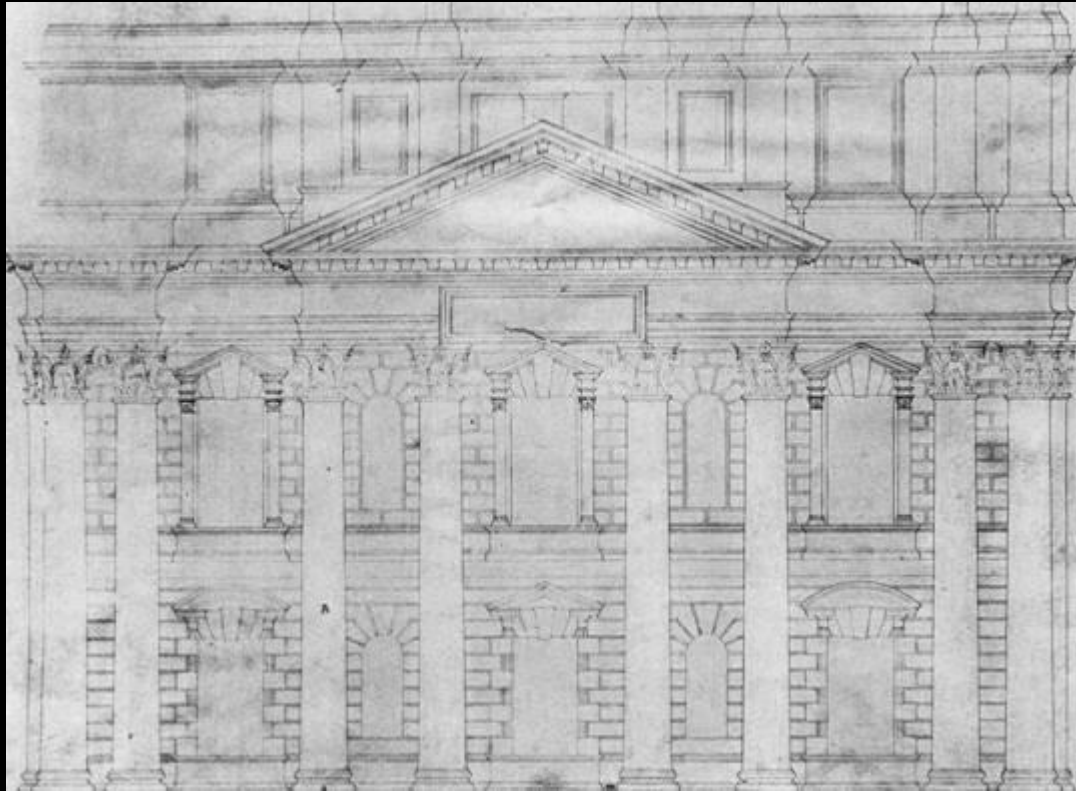






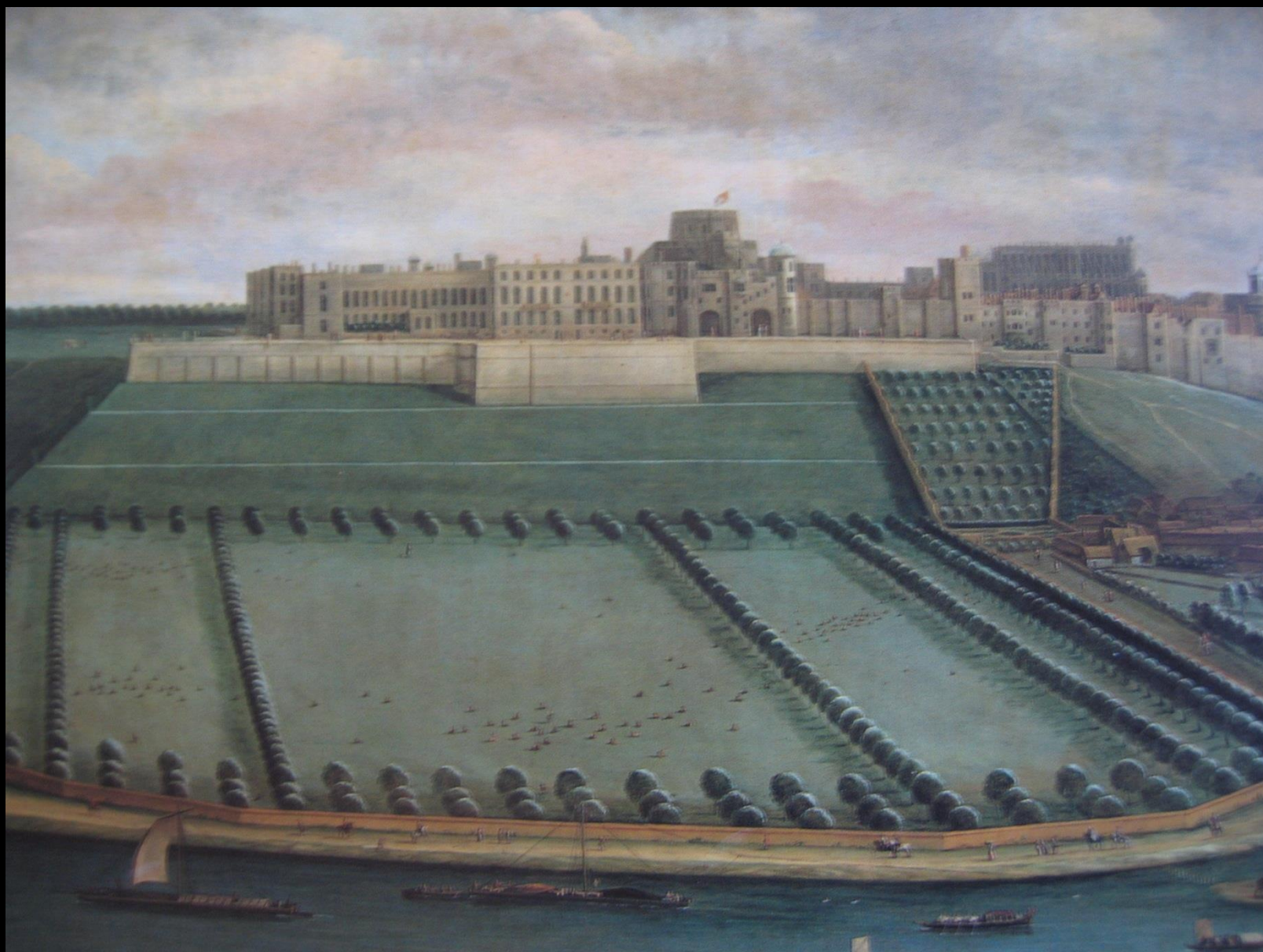






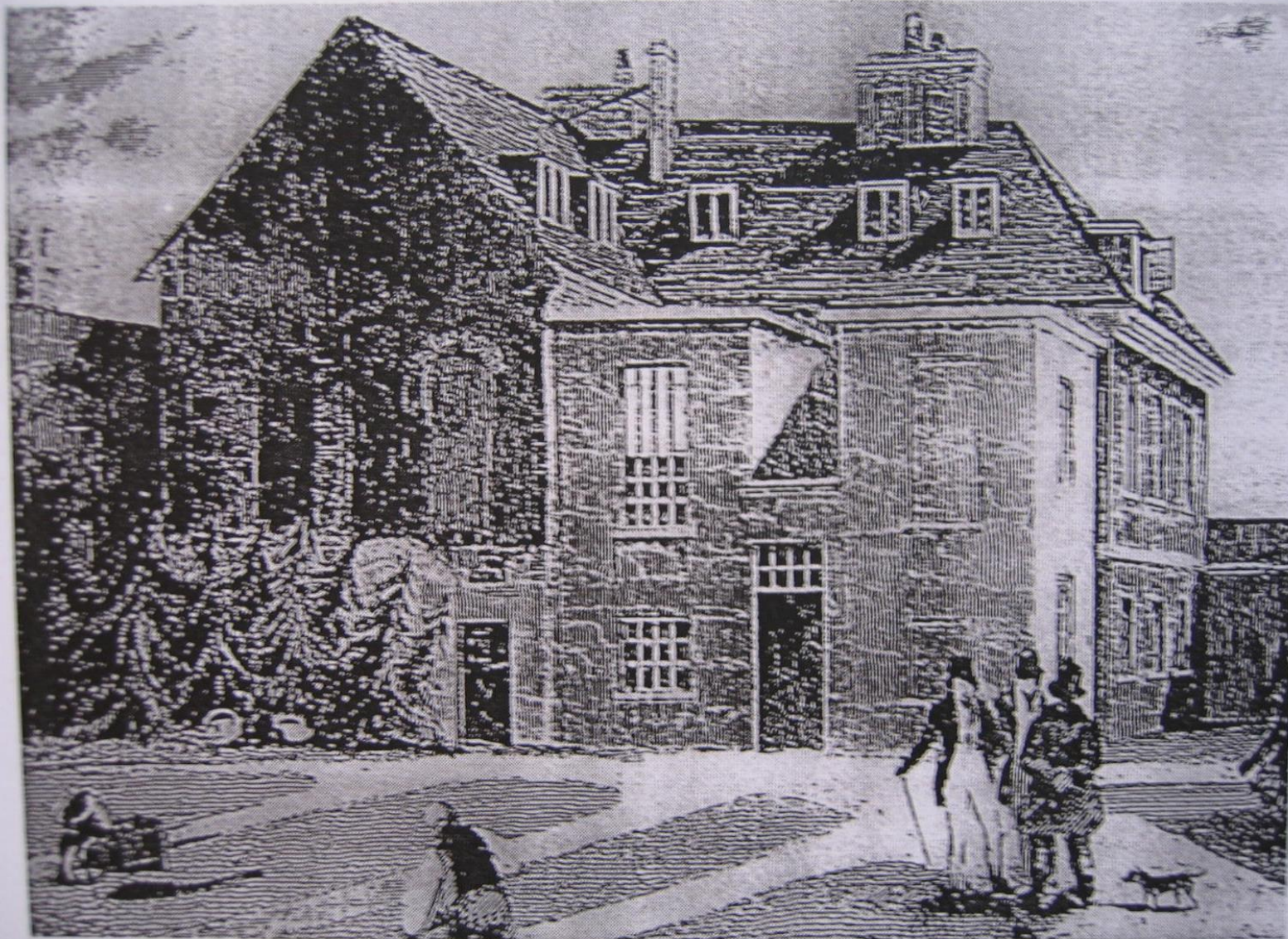


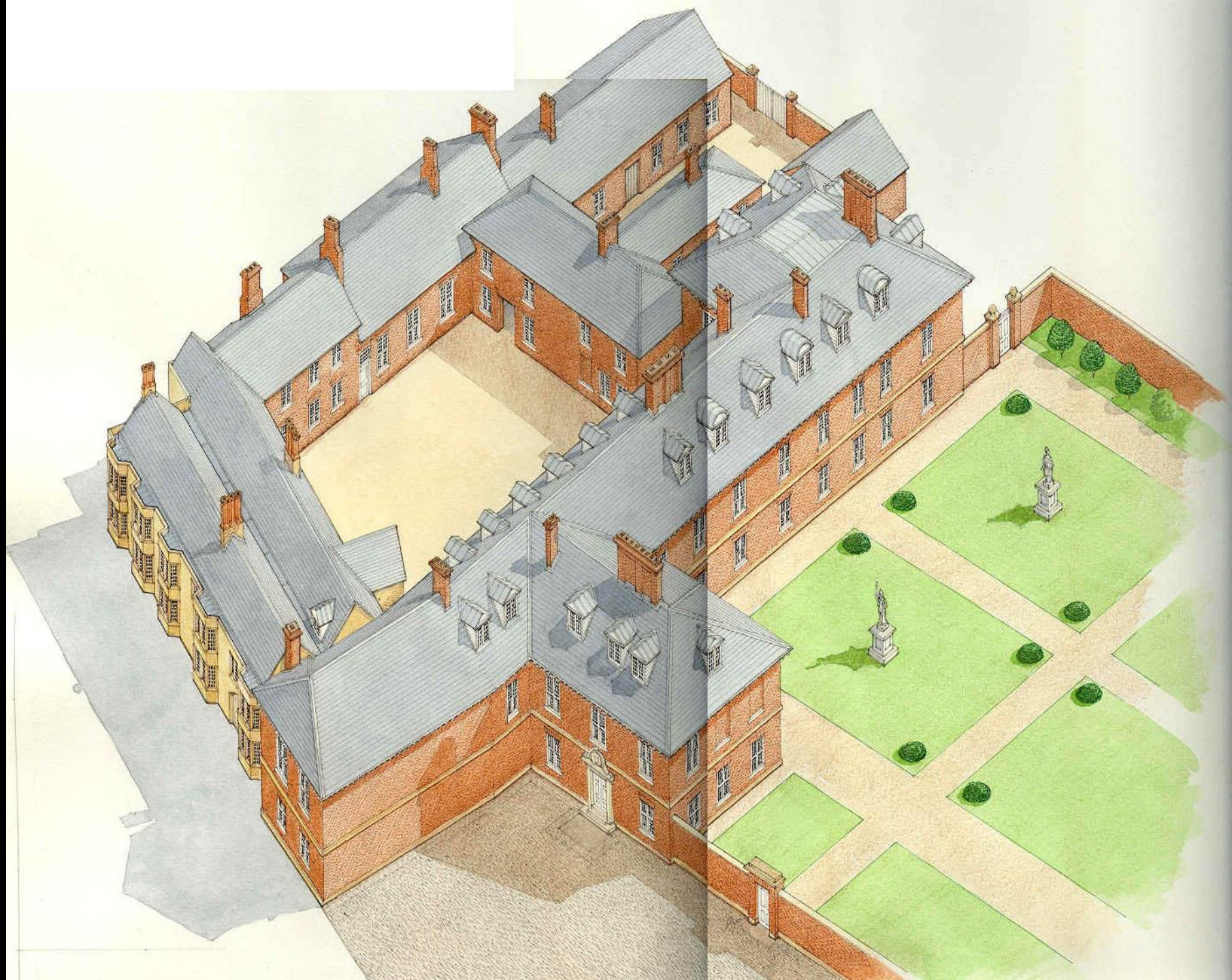


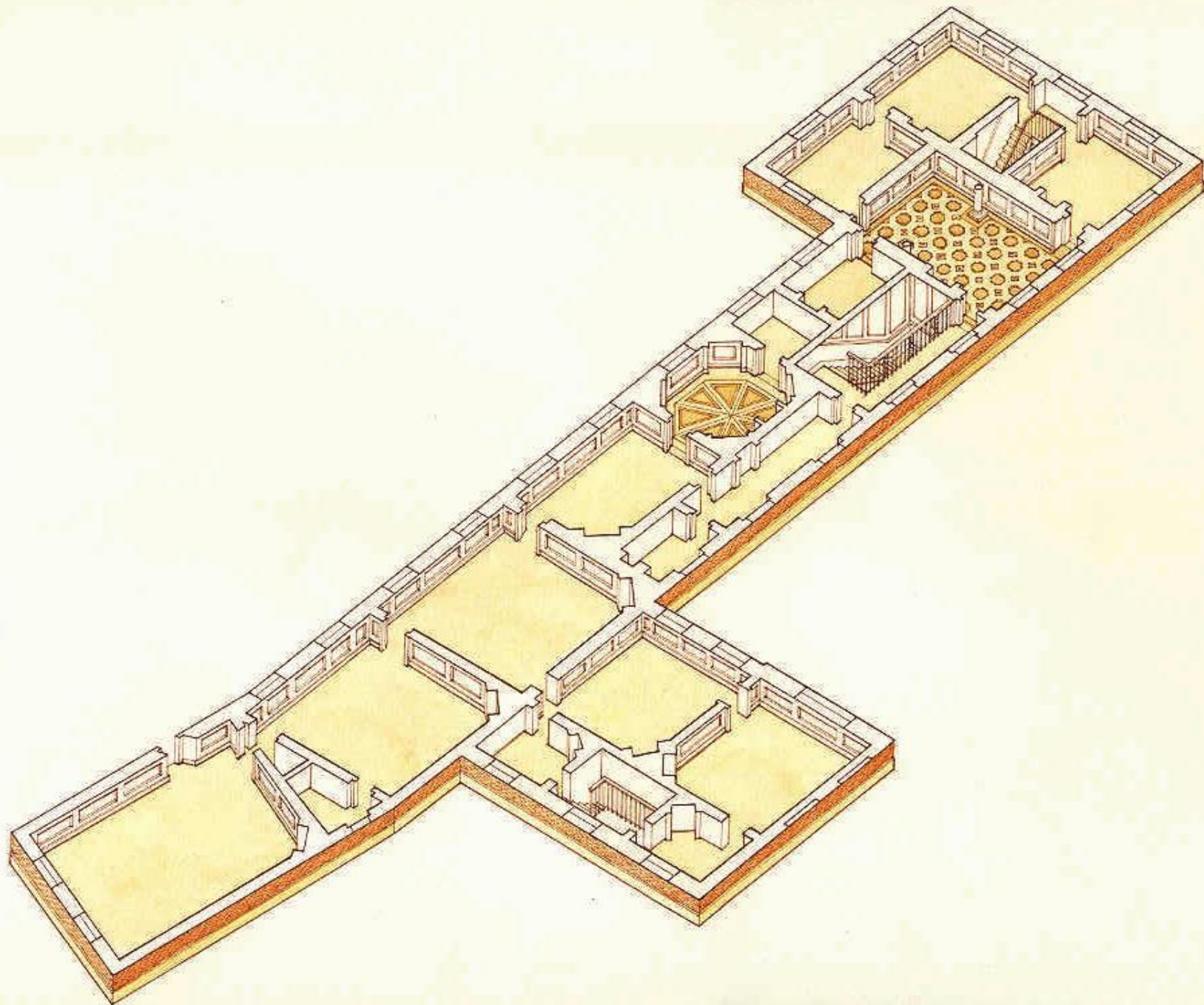




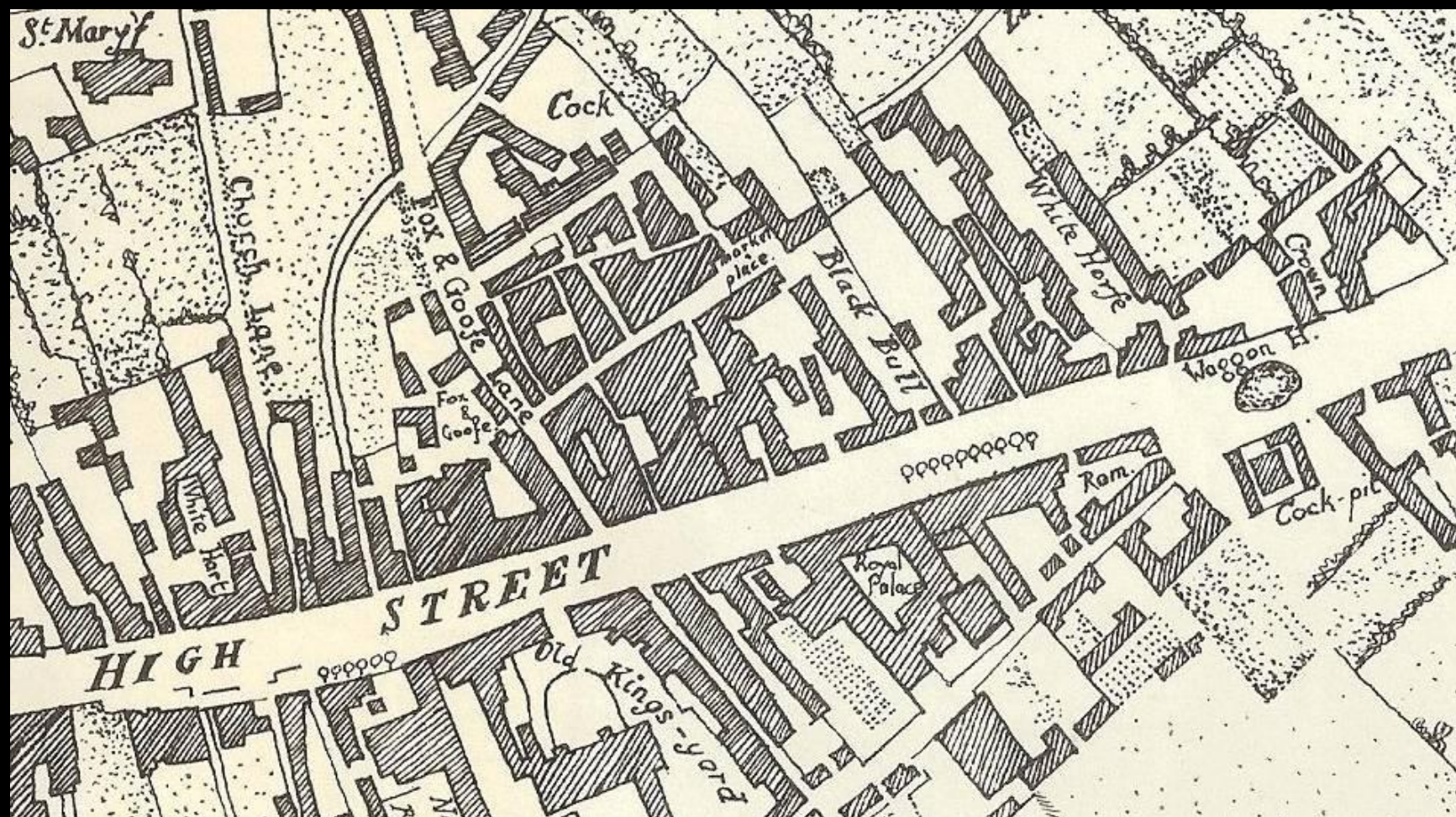














SIR CHR. WREN.
*Late Surveyor General of
the Royal Buildings.*
He died the 22. of Feb. 1723. aged 91.





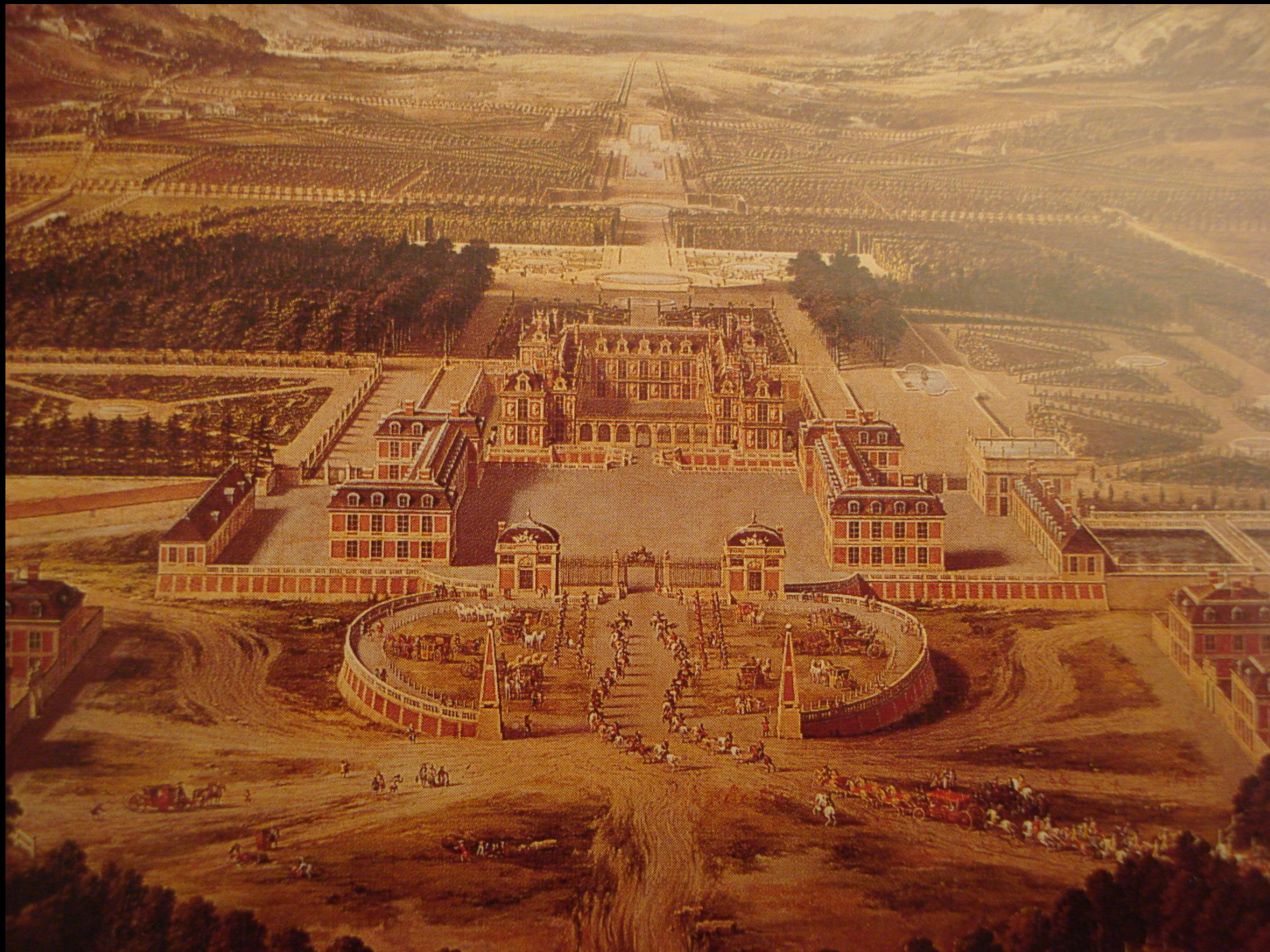
East View of the House of Commons, and the adjoining Offices as intended to have been finished by Sir Christopher Wren.



West View of the Ancient Castle of Winchester.



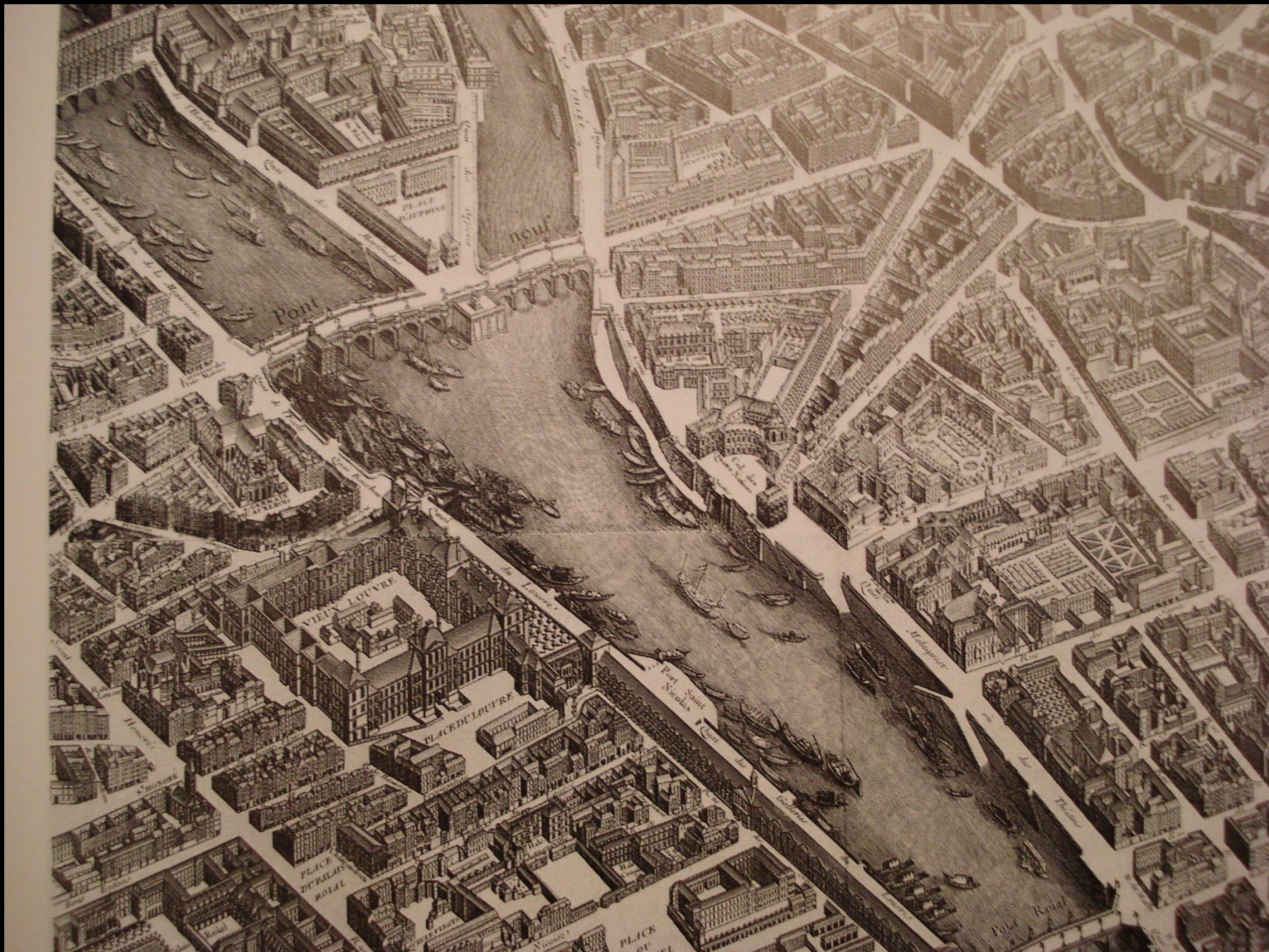
East View of the Ancient Castle of Winchester.



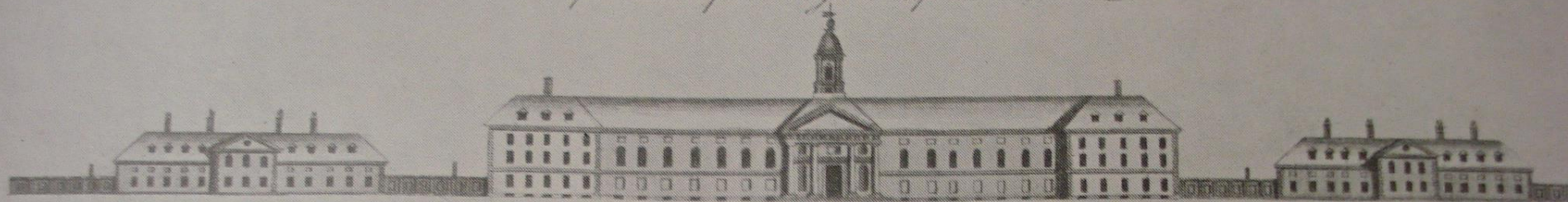








The fore-front of the Royal Hospital at Chelsea



80 feet in Front



The back-front of the Royal Hospital at Chelsea



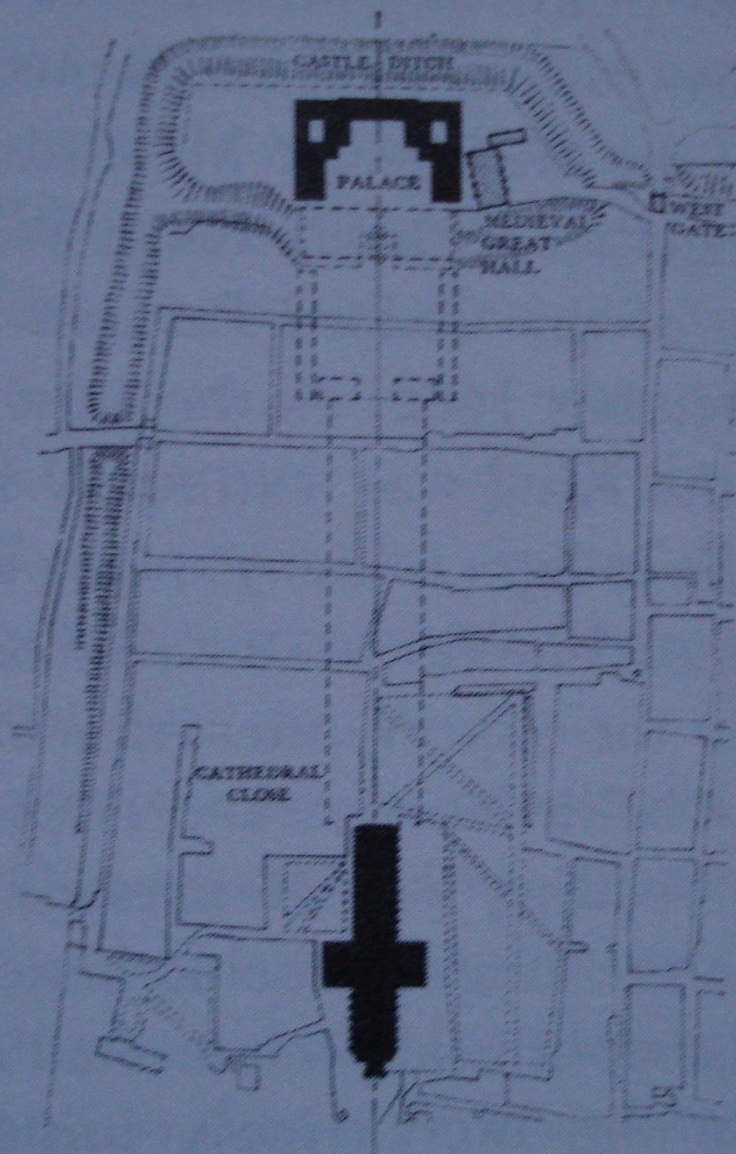
East View of the House of Commons, and the adjoining Offices as intended to have been finished by Sir Christopher Wren.



West View of the Ancient Castle of Winchester.

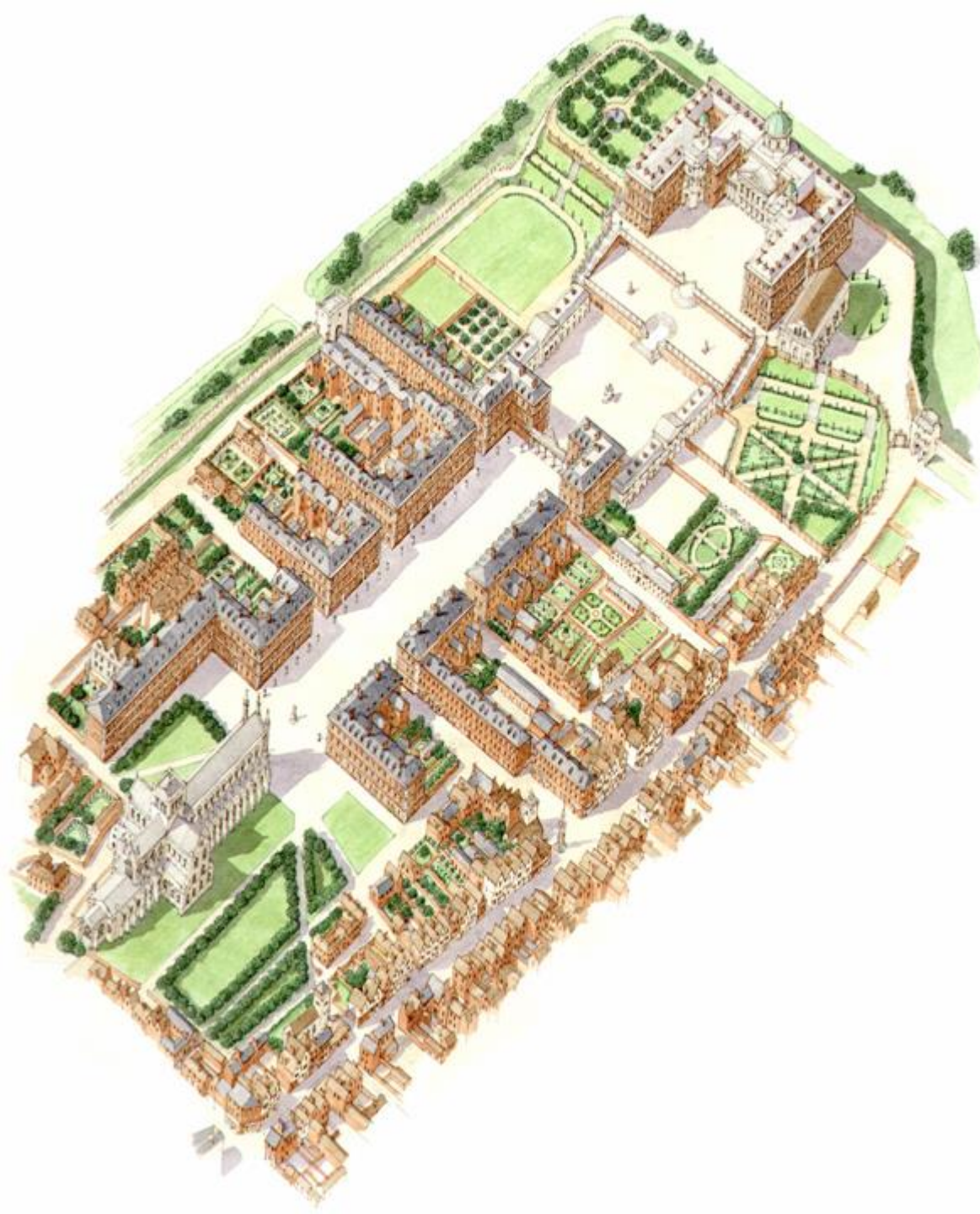


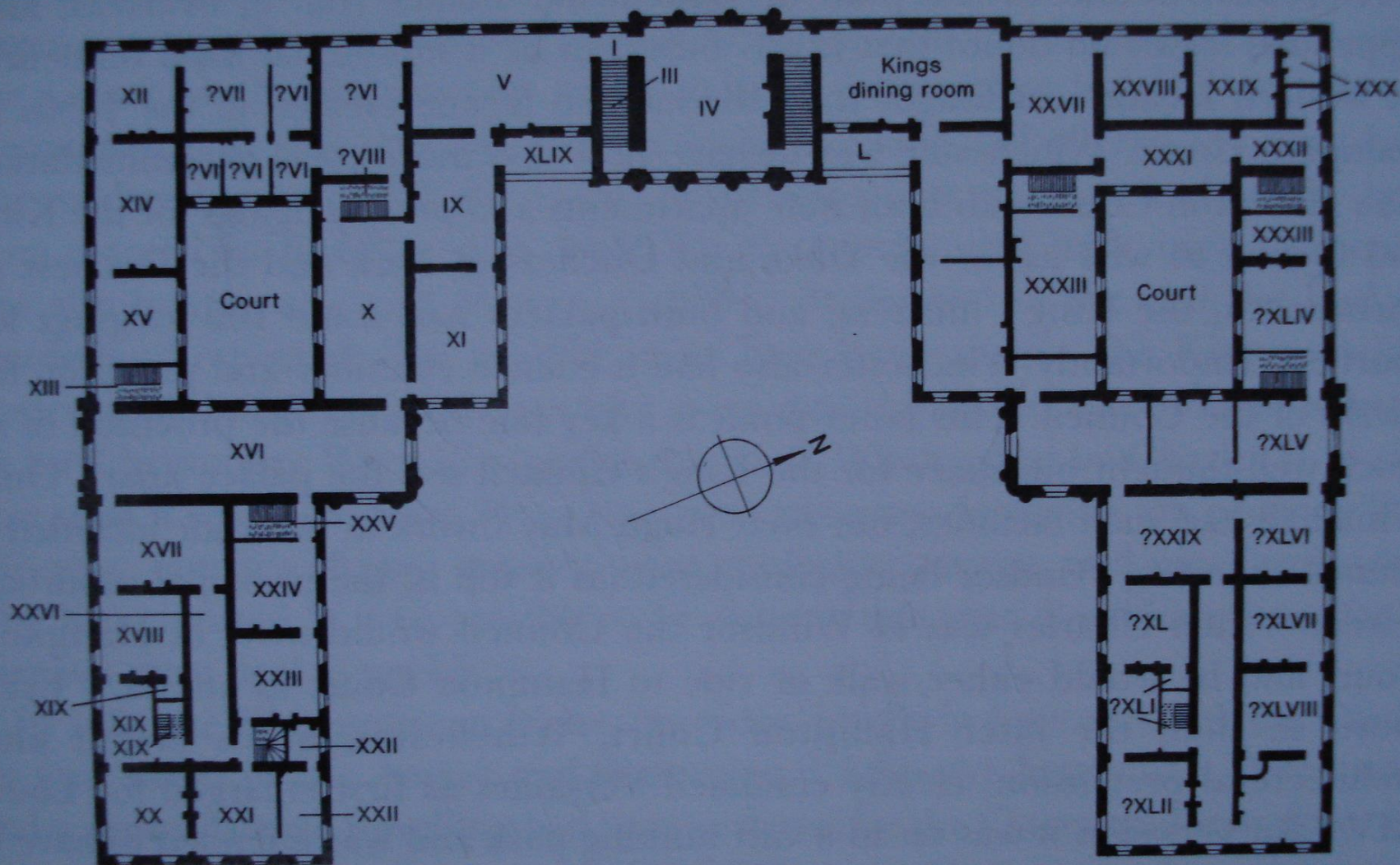
East View of the Ancient Castle of Winchester.

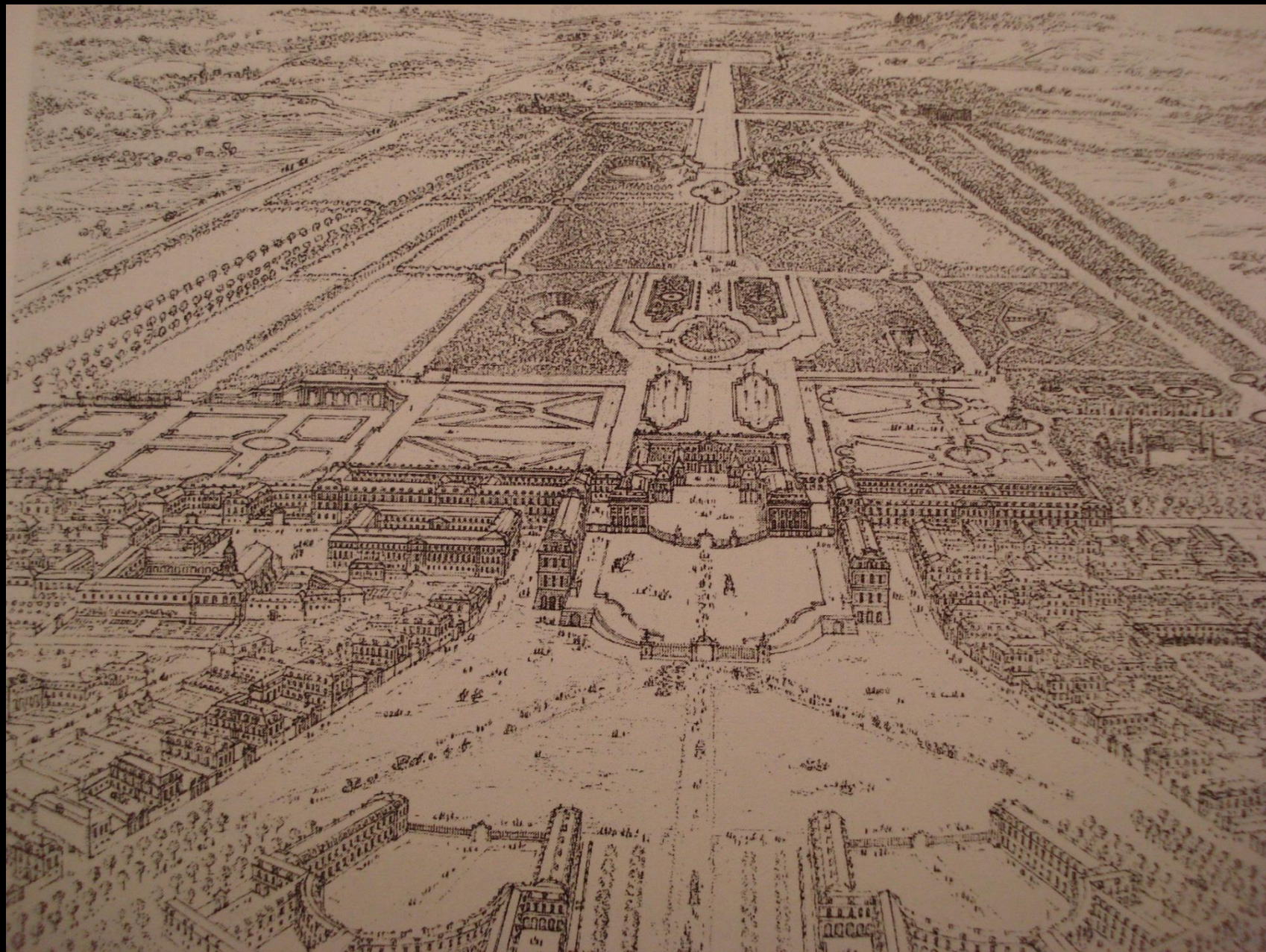


100 0 200
Scale of Metres

300 0 600
Scale of Feet















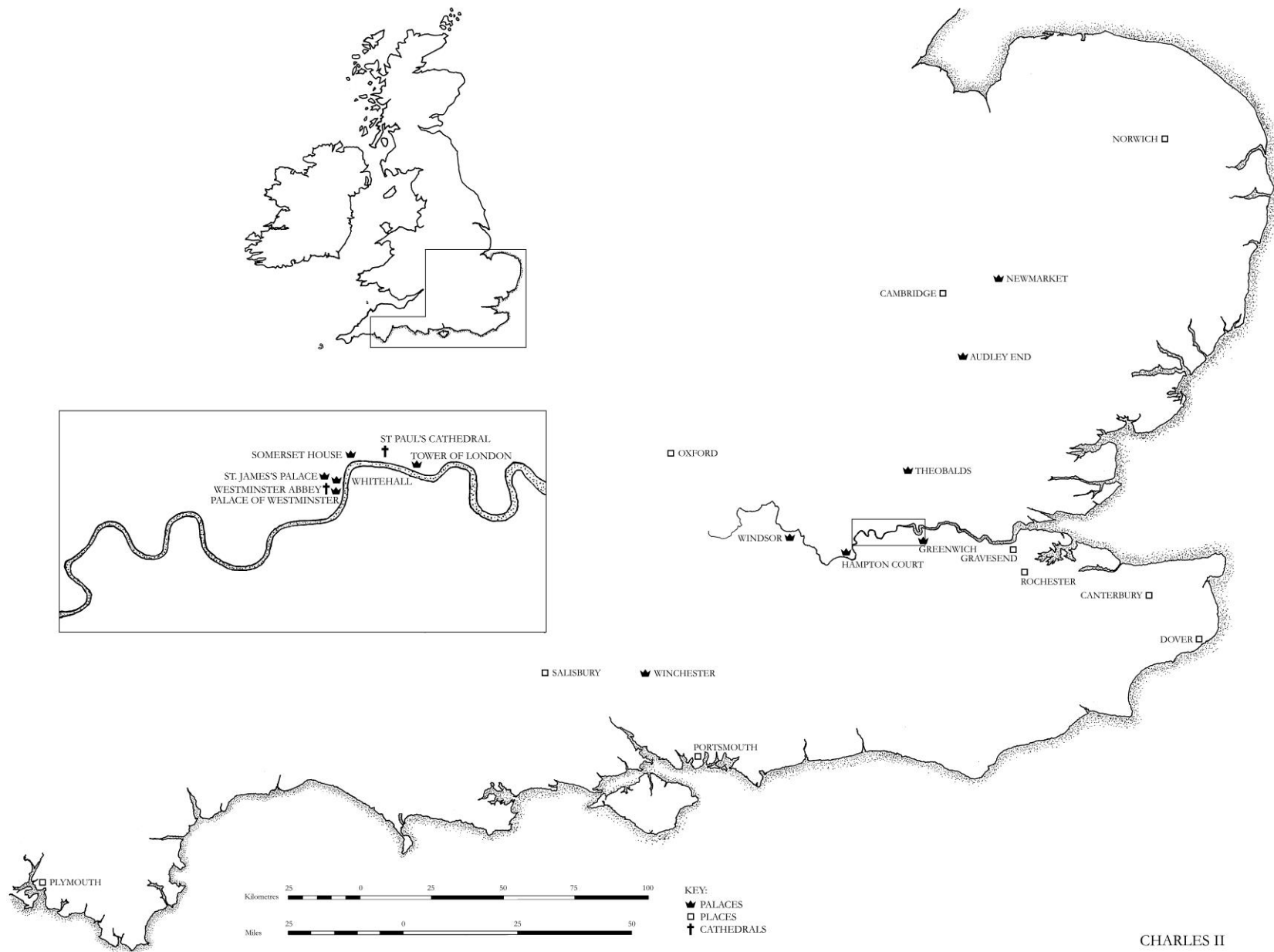
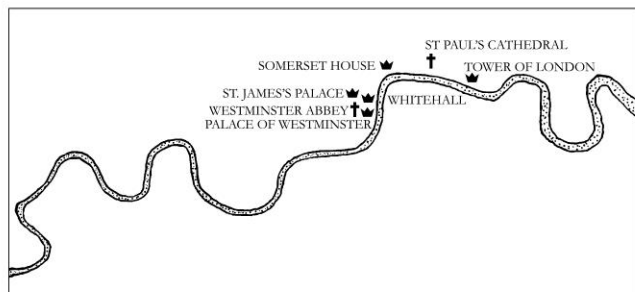
East View of the House of Commons, and the adjoining Offices as intended to have been finished by Sir Christopher Wren.



West View of the Ancient Castle of Winchester.



East View of the Ancient Castle of Winchester.



CHARLES II



ILLUSTRATIONS, THIS PAGE. COURTESY OF WINCHESTER 'NIMS SERVICE





East View of the House of Commons, and the adjoining Offices as intended to have been finished by Sir Christopher Wren.



West View of the Ancient Castle of Winchester.



East View of the Ancient Castle of Winchester.



