

Ruling Passions: The Architecture of the Cecils

Professor Simon Thurley CBE



GRESHAM
COLLEGE

ANNA BOLINA VXOR-

HENRI OCTA





Hoo

Anne dau. & coh.
Thomas Hoo, Lord Hoo
d. 1484



Geoffrey Boleyn,
Alderman of London
d. 1463



Blickling



Hever

Margaret dau. & coh.
d. 1540

=
William Boleyn, kt.
d. 1505

Elizabeth
d. 1538

=
Thomas Boleyn,
Earl of Ormonde
and Wiltshire,
d. 1539

James Boleyn, kt.
d. 1561

George Boleyn
ex. 1536



Mary Boleyn
d. 1543

Anne Boleyn
ex. 1536





Hoo

Anne dau. & coh.
Thomas Hoo, Lord Hoo
d. 1484

=

Geoffrey Boleyn,
Alderman of London
d. 1463



Blickling



Hever



Rochford

Margaret dau. & coh.
d. 1540

=

William Boleyn, kt.
d. 1505



Hever



New Hall



Hoo

Elizabeth
d. 1538

=

Thomas Boleyn,
Earl of Ormonde
and Wiltshire,
d. 1539

James Boleyn, kt.
d. 1561

George Boleyn
ex. 1536



Mary Boleyn
d. 1543

Anne Boleyn
ex. 1536





Hoo

Anne dau. & coh.
Thomas Hoo, Lord Hoo
d. 1484

=

Geoffrey Boleyn,
Alderman of London
d. 1463



Blickling



Hever



Rochford

Margaret dau. & coh.
d. 1540

=

William Boleyn, kt.
d. 1505



Hever



New Hall



Hoo



Hever

Elizabeth
d. 1538

=

Thomas Boleyn,
Earl of Ormonde
and Wiltshire,
d. 1539



New Hall

James Boleyn, kt.
d. 1561



Hoo



Blickling

George Boleyn
ex. 1536



Mary Boleyn
d. 1543

Anne Boleyn
ex. 1536



Rochford



Penshurst

Hever Castle



Lady Margaret Beaufort



David = Alice
Cecil Dicons
d. 1537



Field of the Cloth of Gold: The Royal Collection – Her Majesty the Queen



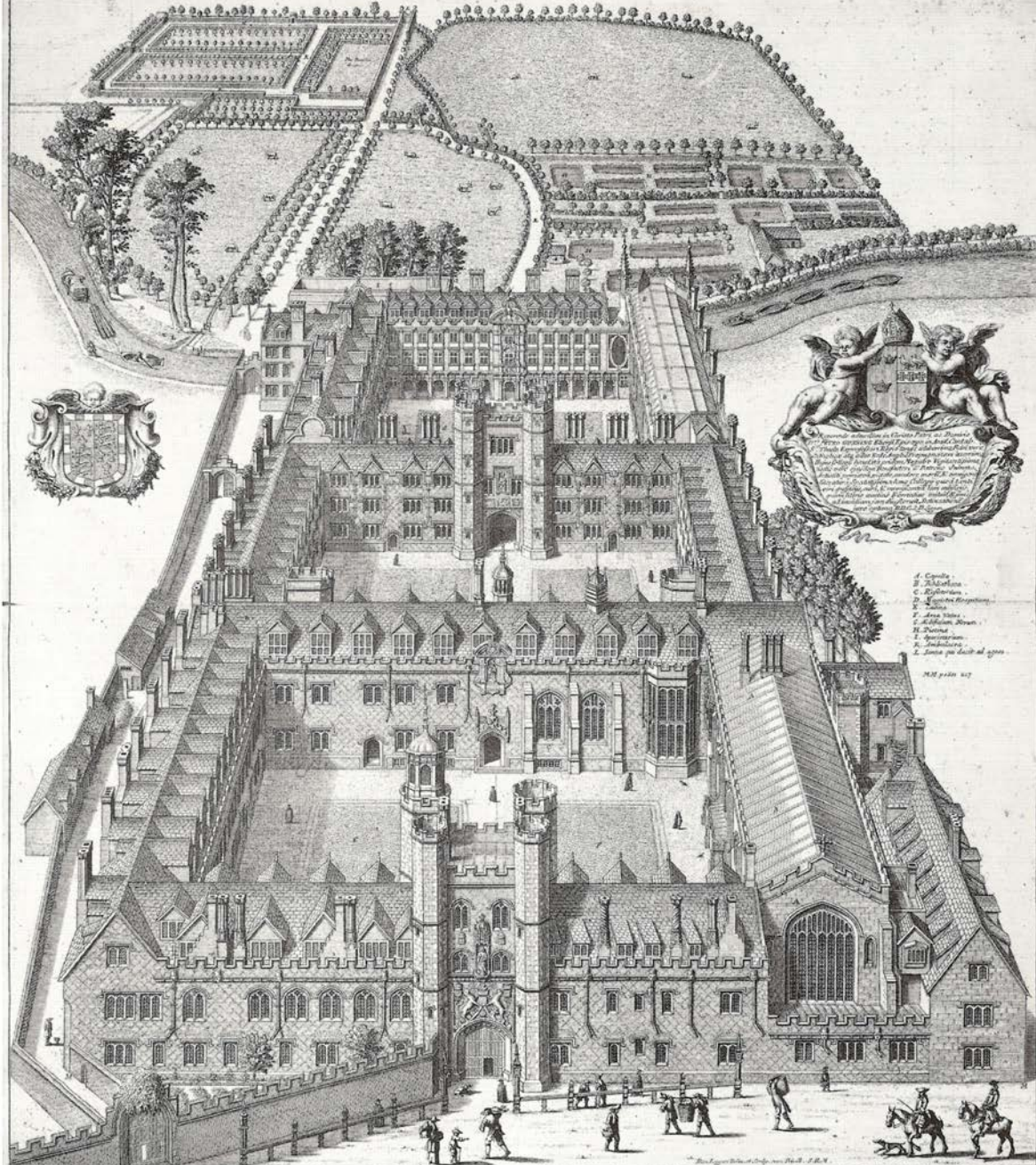
David Cecil = Alice Dicons
d. 1537

Jane Heckington = Richard Cecil
1500 - 1587 d. 1553

William Cecil
Baron Burghley
1520-1598



COLLEGIUM SANCTI IOHANNIS EVANGELISTA.



Small Latin text at the bottom of the engraving, likely a dedication or description of the building.

David Loggan [1690],
St John's College, Cambridge

David Cecil = Alice Dicons
d. 1537

Jane Heckington = Richard Cecil
1500 - 1587 d. 1553

Sir Anthony Cooke = Anne Fitzwilliam
d.1576



William Cecil
Baron Burghley
1520-1598

= (1) Mary Cheke d. 1544 =

(2) Mildred Cooke
Lady Burghley
1526 - 1589



Mildred Cooke, Lady Burghley





Thomas Boleyn earl of Ormond and Wiltshire

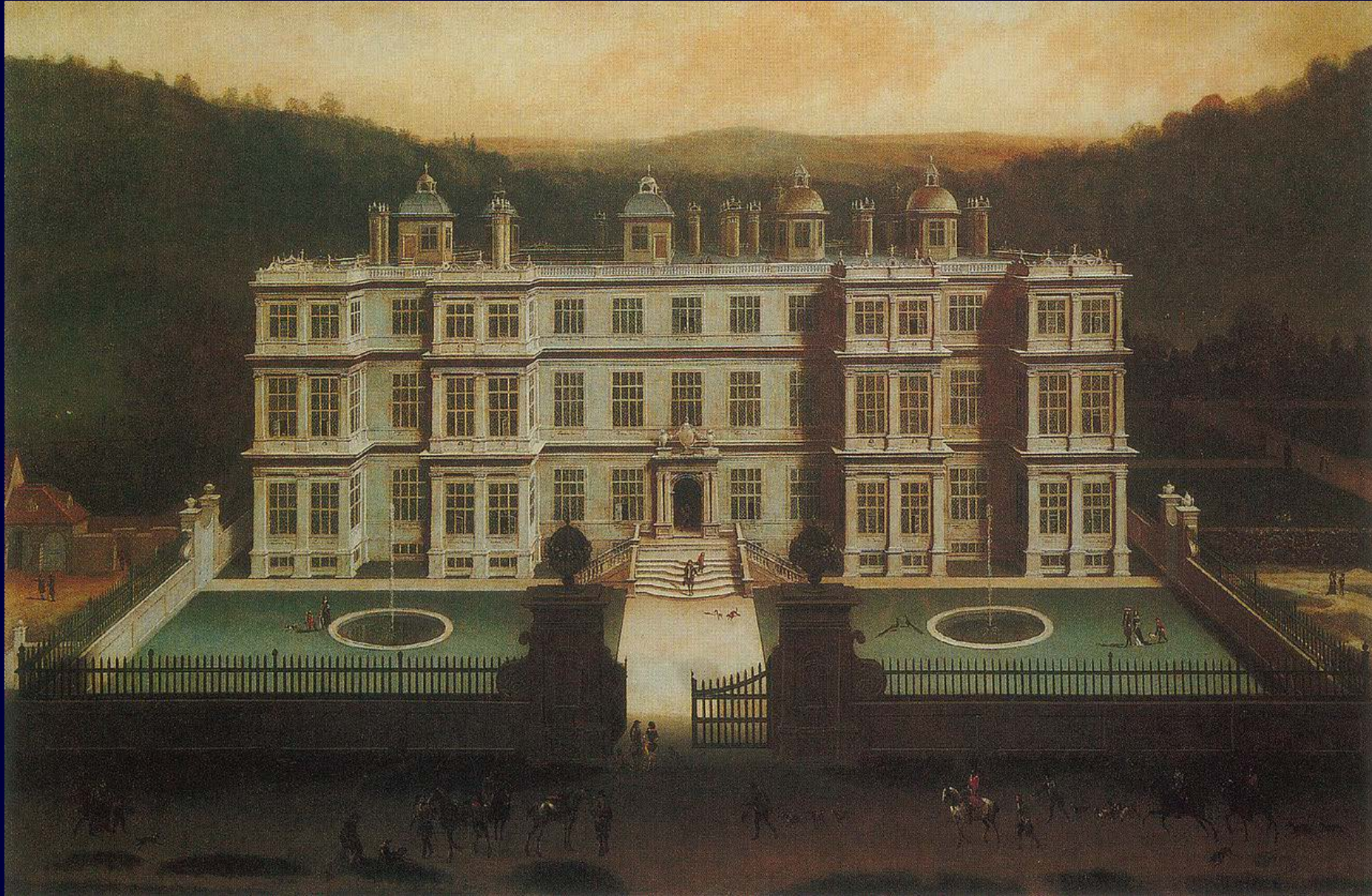
William Cecil,
1st Baron Burghley



Edward Seymour,
1st Duke of Somerset
Lord Protector of England



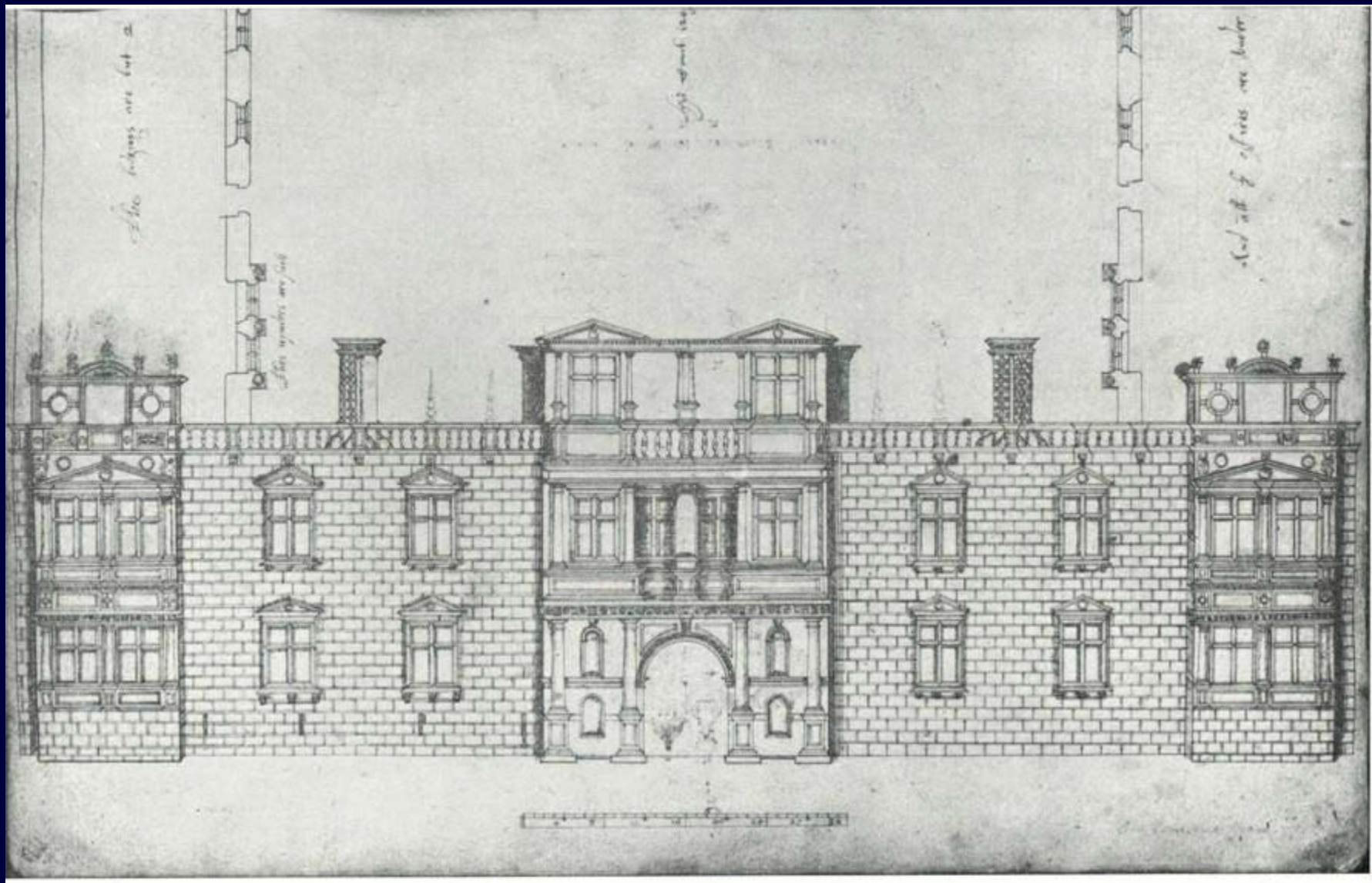
Longleat



View of Longleat by Jan Siberechts, 1675

Hill Hall, Essex



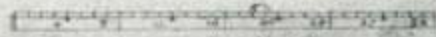


The columns are but a

light and

and all of which are better

The windows are but





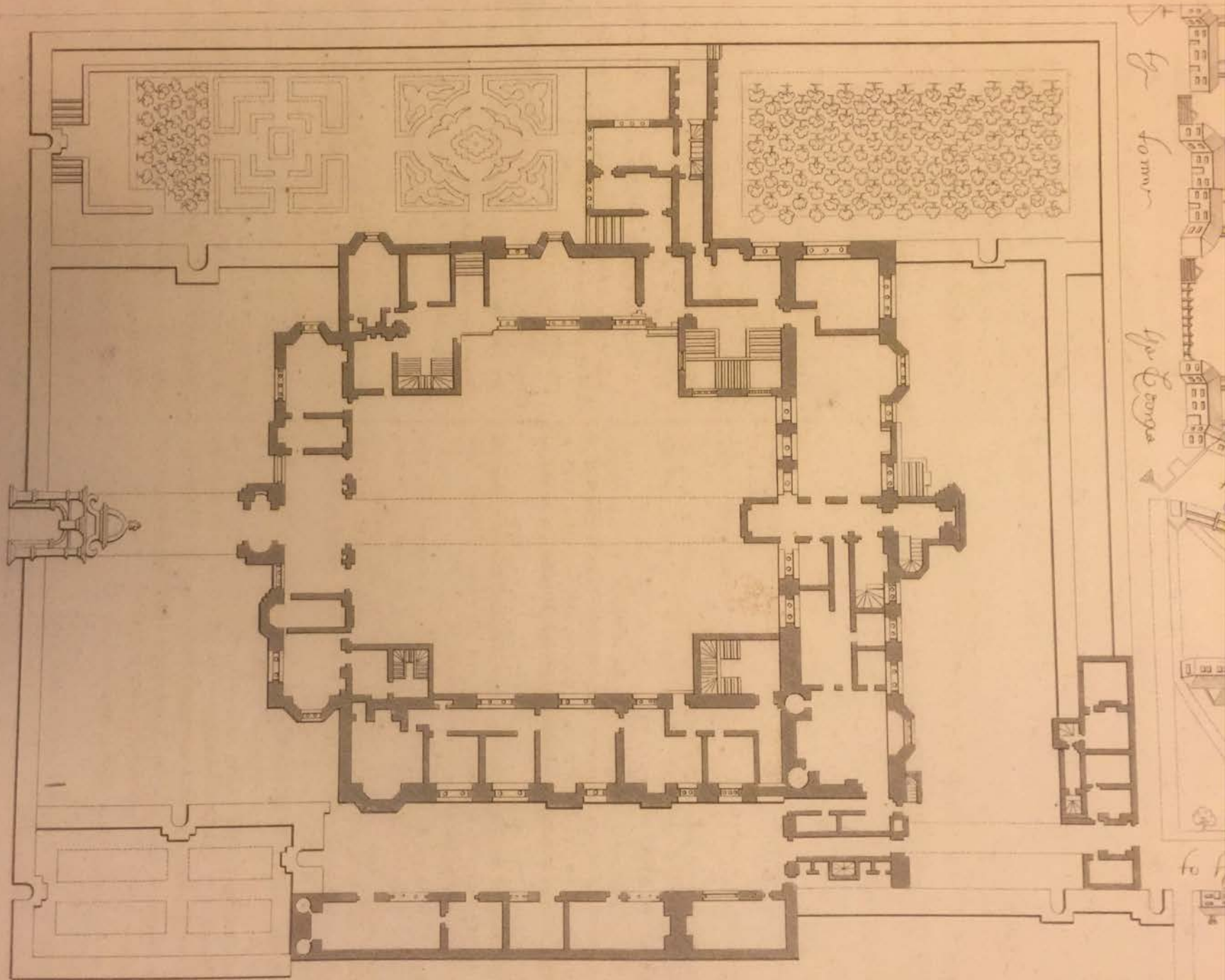
Queen Elizabeth I
by Unknown English artist
oil on panel, circa 1600
© National Portrait Gallery, London

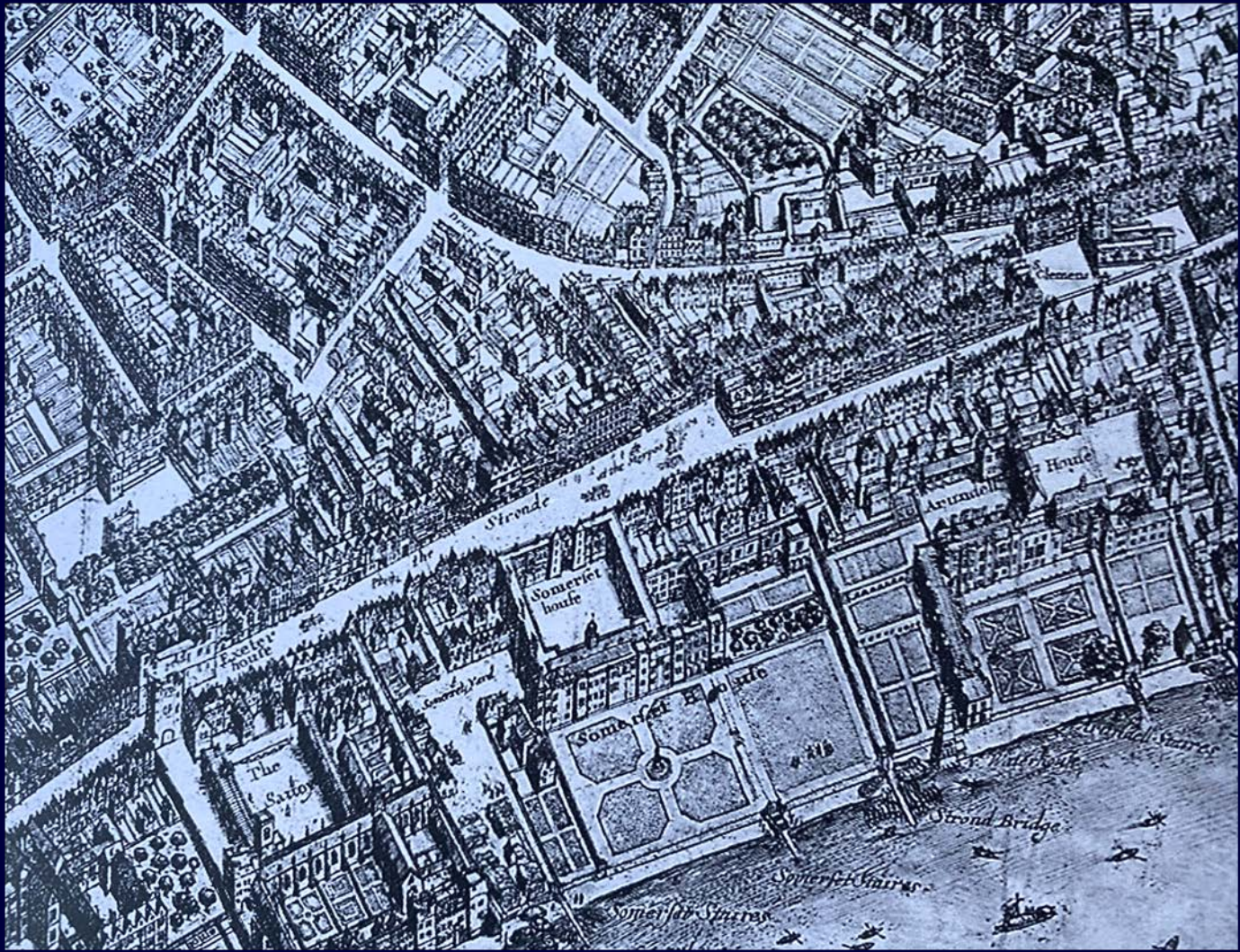




Plan of the Old Palace at Hatfield: Hatfield House Archives.

Engraved by Henry Shaw
From the





William Cecil,
1st Baron Burghley





Wimbledon Rectory: Country Life

William Cecil, 1st Baron
Burghley, Lord High
Treasurer of England':

Bodleian Library, Oxford



Burghley House



Houses of the Cecils



Burghley House West Front

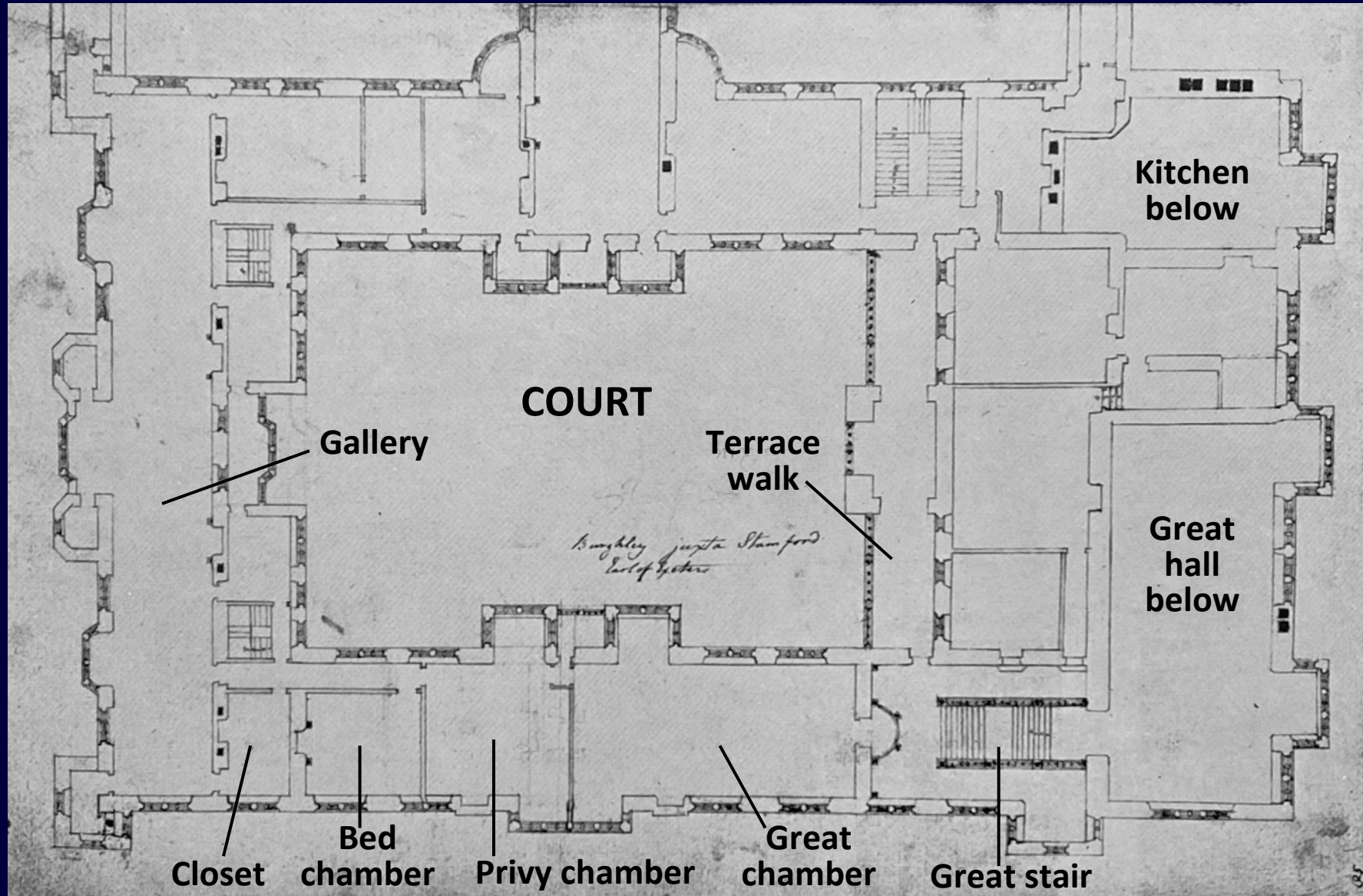


Burghley House Great Hall





Burghley House Sir John Soane Museum, London



Houses of the Cecils



David Cecil = Alice Dicons
d. 1537

Jane Heckington = Richard Cecil
1500 - 1587 d. 1553

Sir Anthony Cooke = Anne Fitzwilliam
d.1576



William Cecil
Baron Burghley
1520-1598

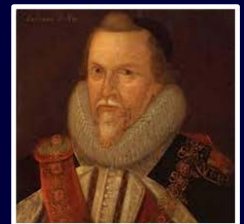
(1) Mary Cheke d. 1544

(2) Mildred Cooke
Lady Burghley
1526 - 1589



Dorothy
Nevill

= Thomas Cecil
1st Earl of Exeter
1542 - 1623



+4



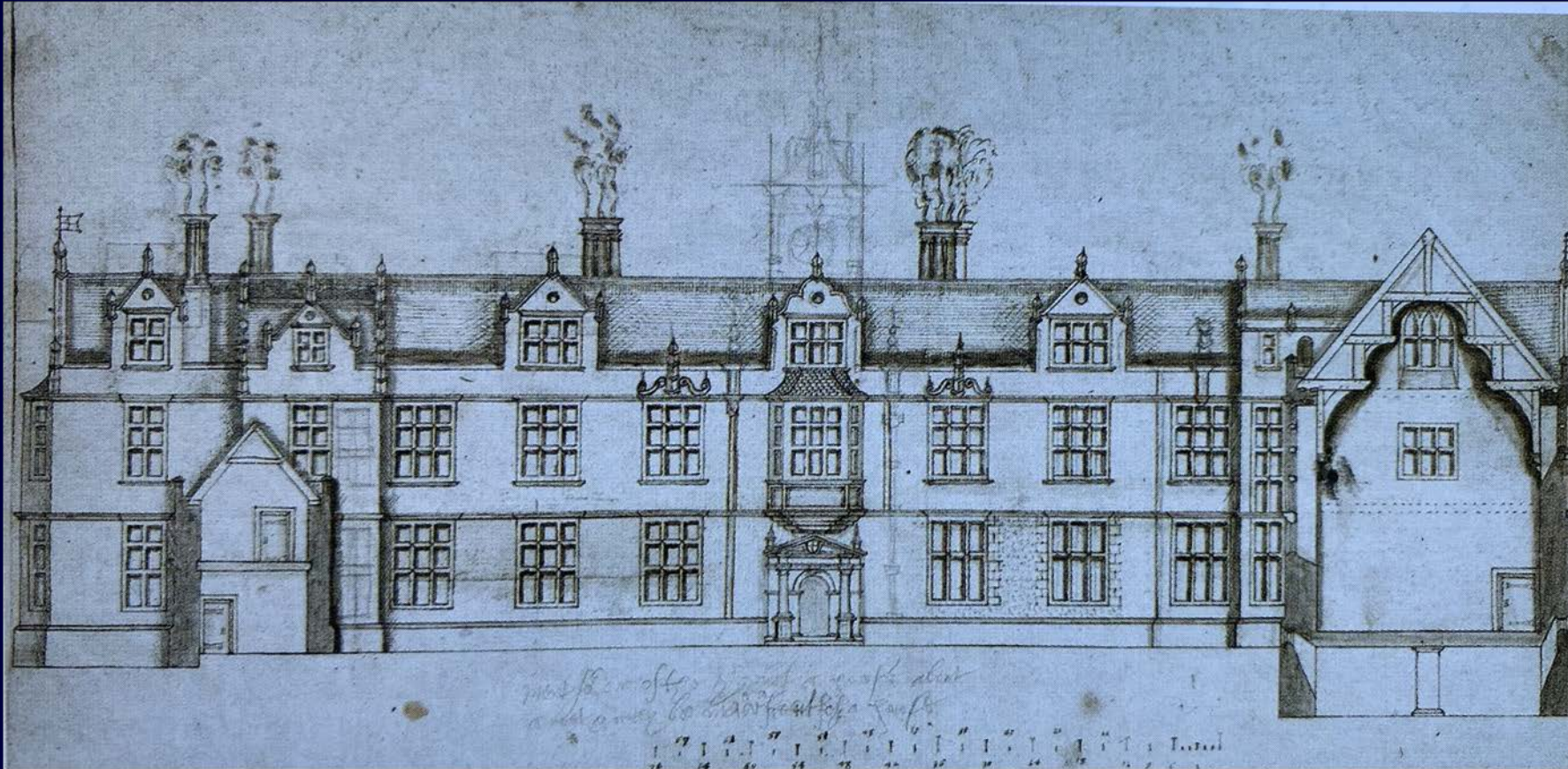
Robert Cecil
1st Earl of Salisbury
1563 - 1612

= Elizabeth Brooke
Lady Cecil

William

Frances

Catherine

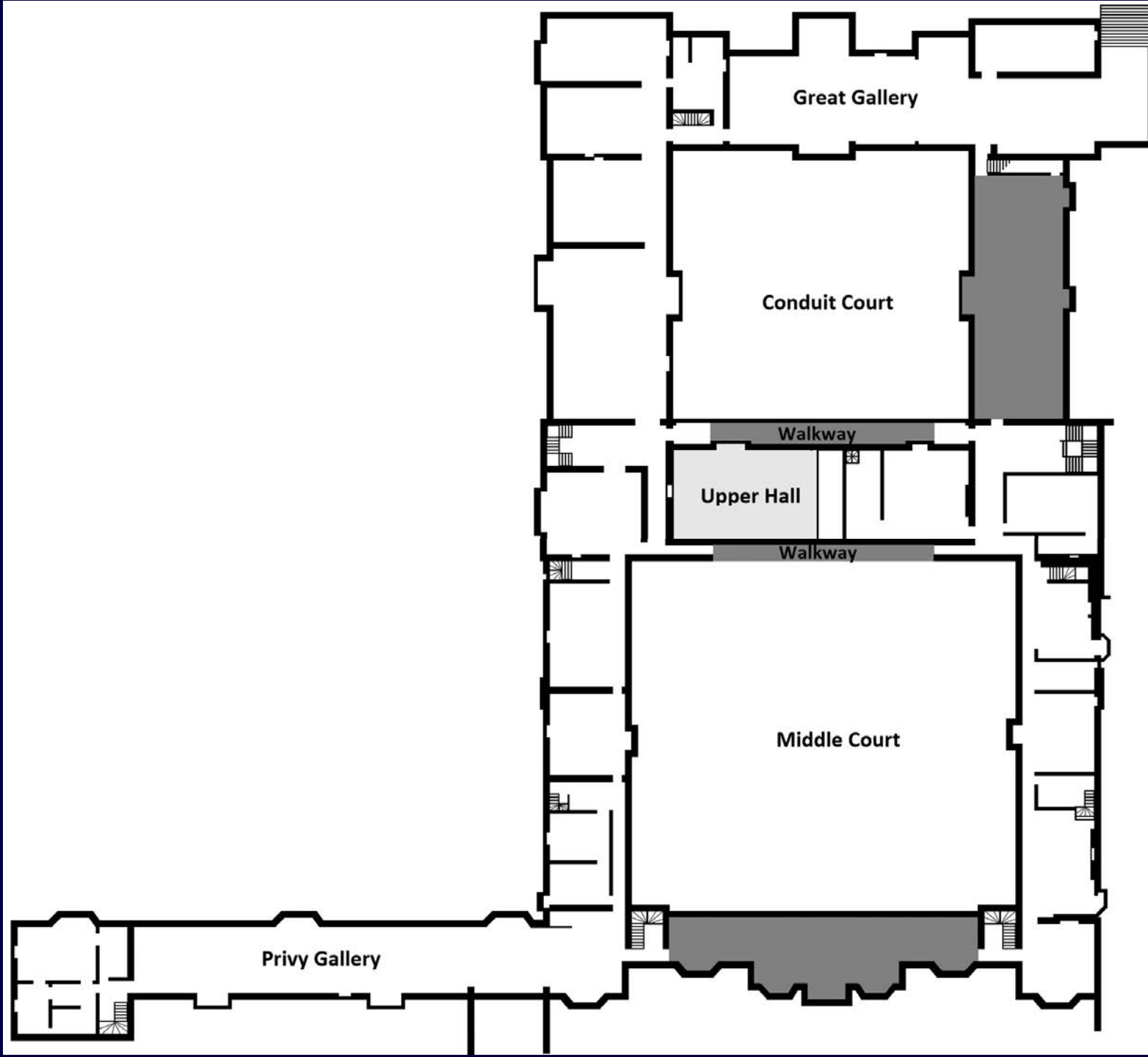


Drawing identified as an elevation of the courtyard at Theobalds House. Sir John Soane Museum, London



Elizabeth I in procession. The College of Arms.

Theobalds





**William Cecil,
Lord Burghley**

House in Cannon Row Westminster

Wimbledon Rectory 1550

Burghley House, Stamford 1555

Theobalds House 1564

Burghley House London

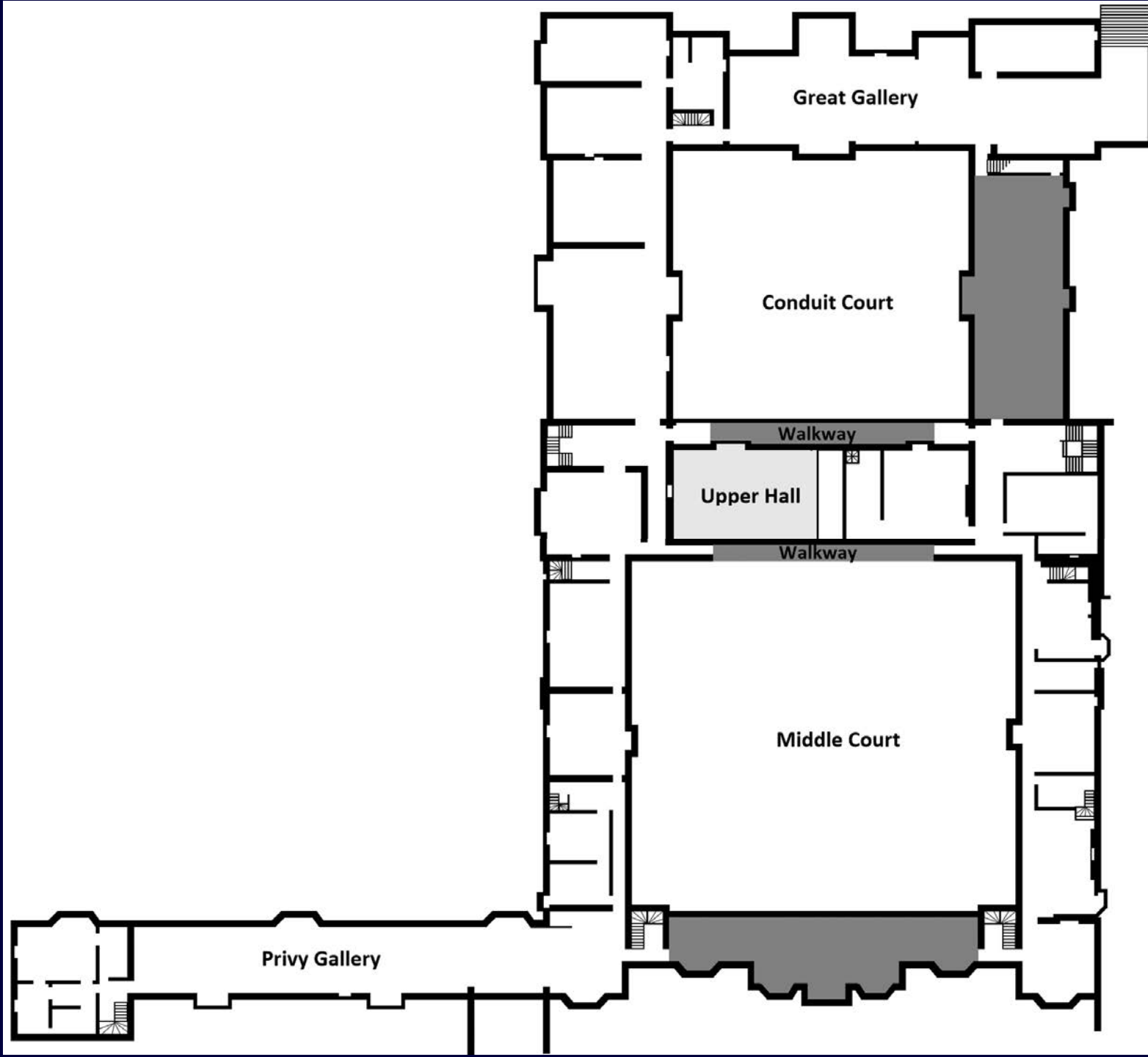
Pymmes 1582

Beaufort House Chelsea 1595

Robert Cecil,
1st Earl of Salisbury

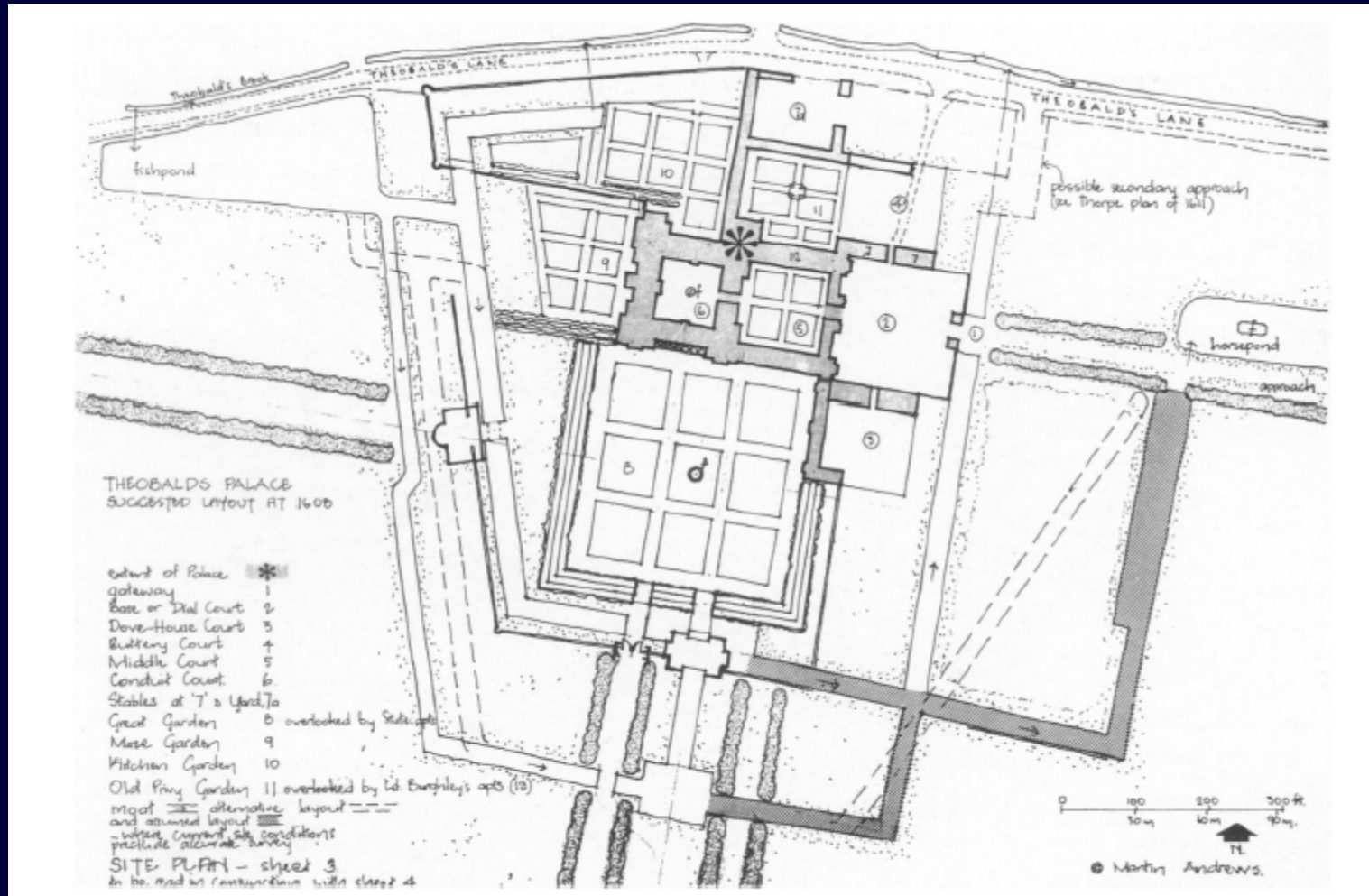


Theobalds



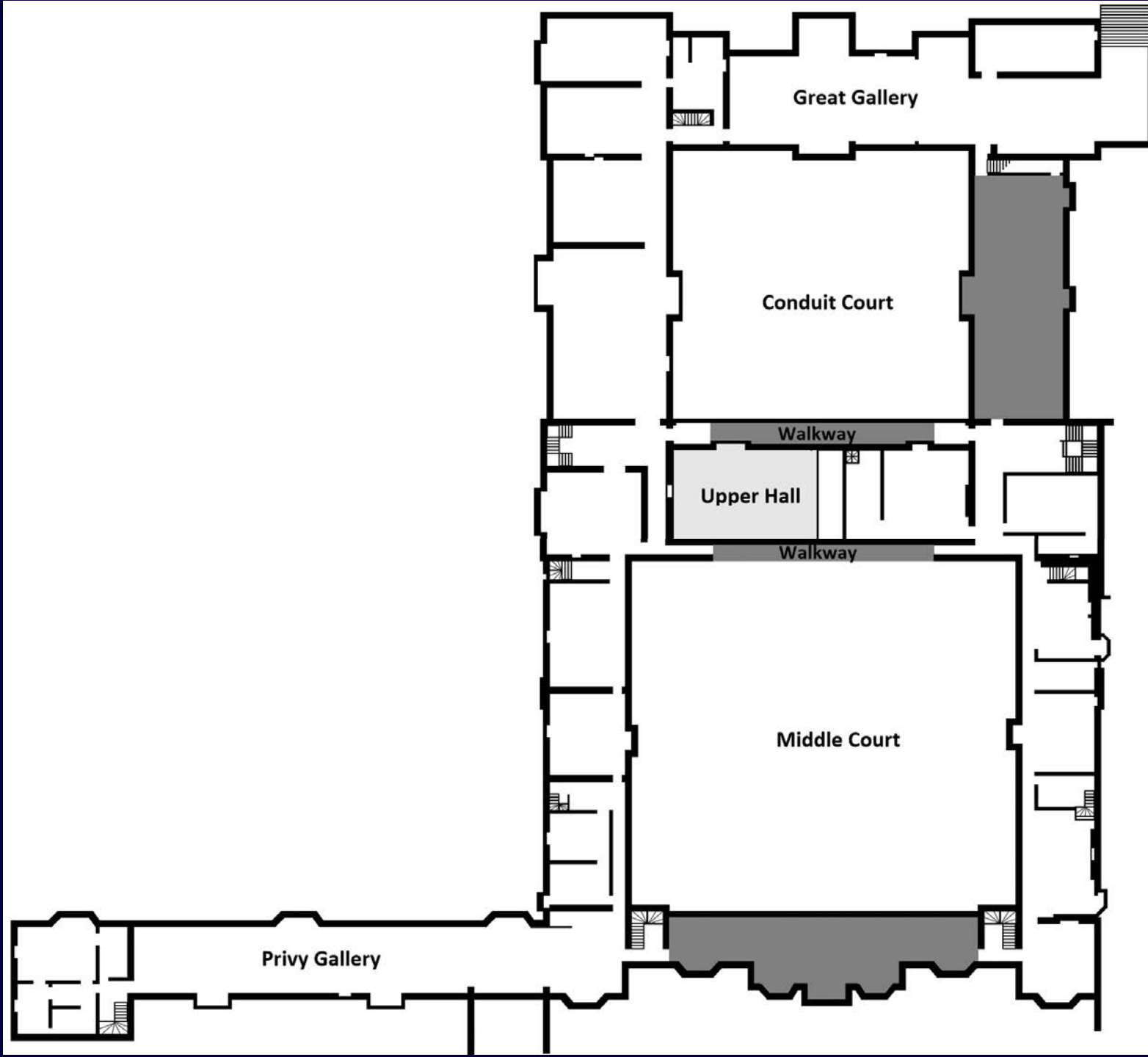
Ruins of Theobalds





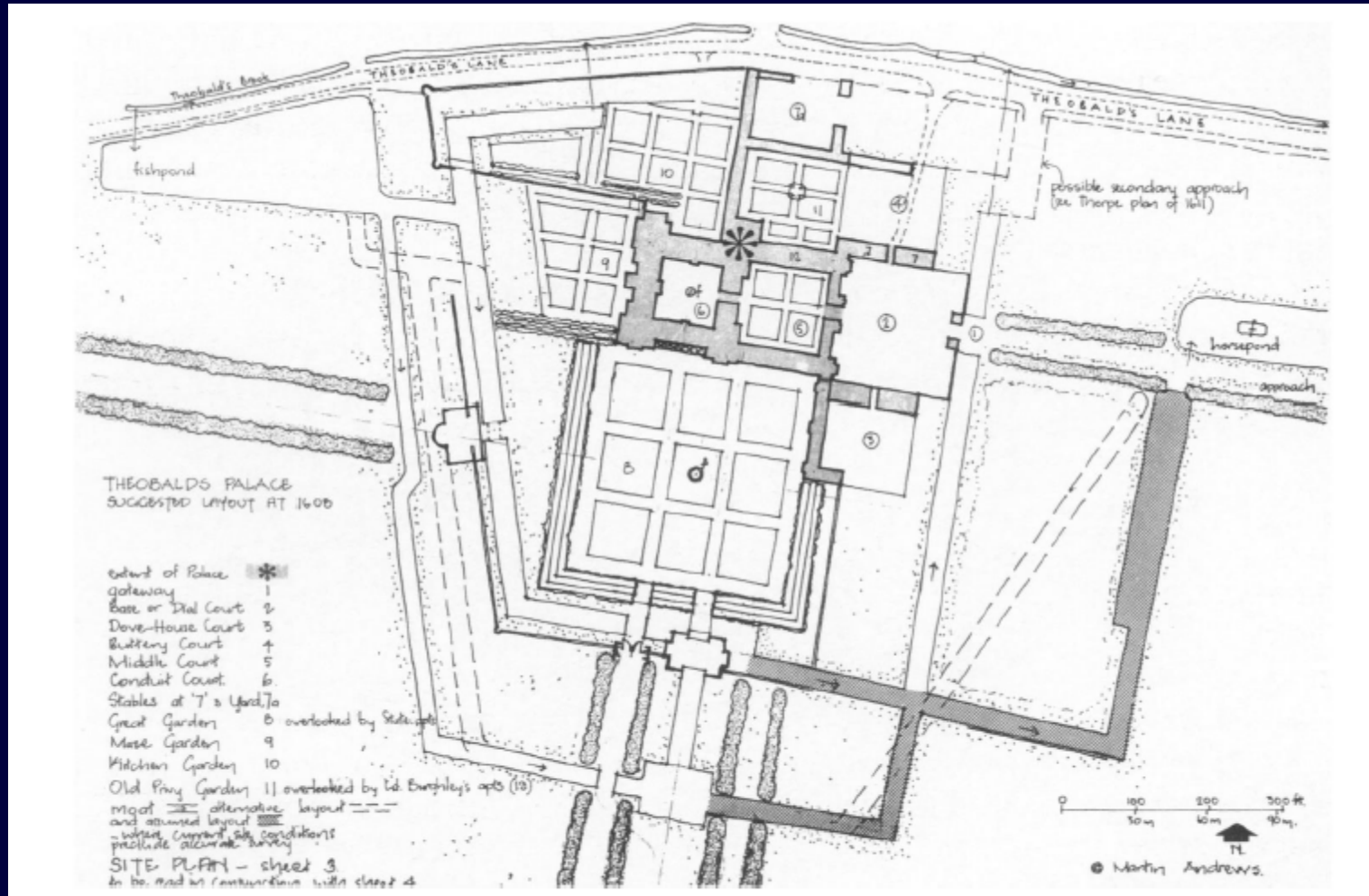
Reconstruction of the plan of Theobalds by Martin Andrews based on a survey of 1608

Theobalds





The Great gallery at Theobalds House with Charles I. The Royal Collection: Her Majesty the Queen



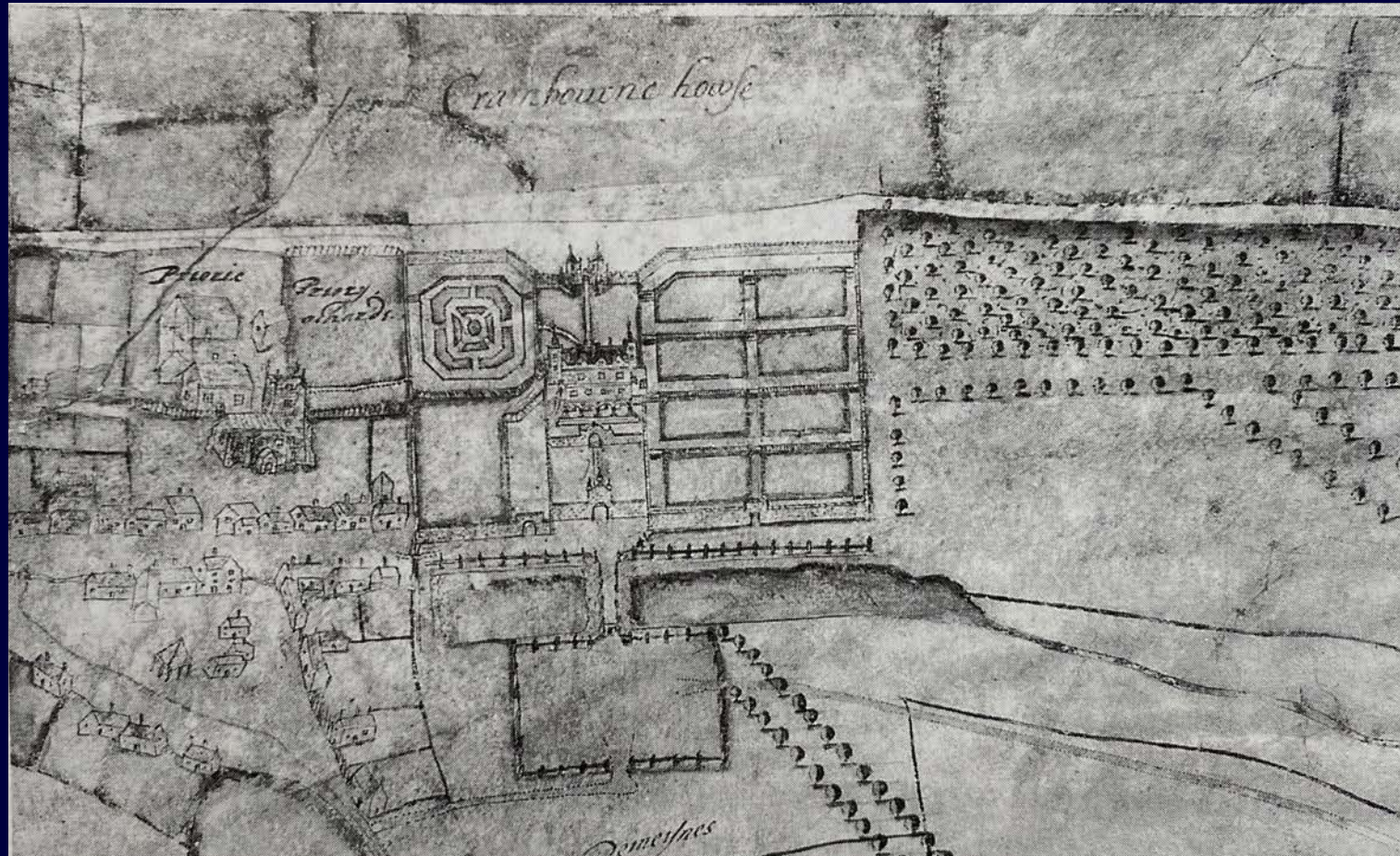
Reconstruction of the plan of Theobalds by Martin Andrews based on a survey of 1608



Houses of the Cecils



Cranborne Manor House

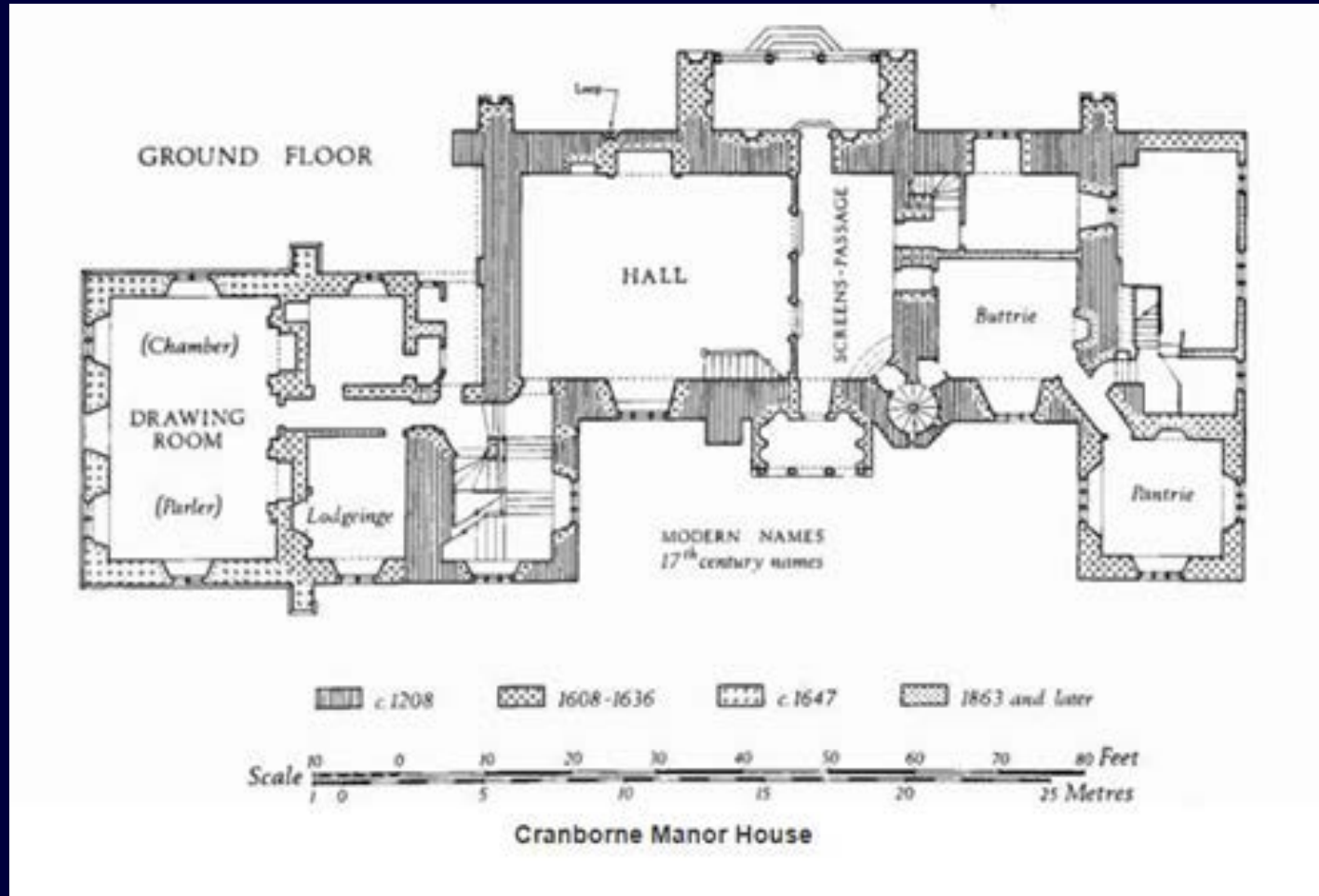


John Norden, c.1610, Map of Cranborne Manor House and park, © Marquess of Salisbury

Cranborne Manor House

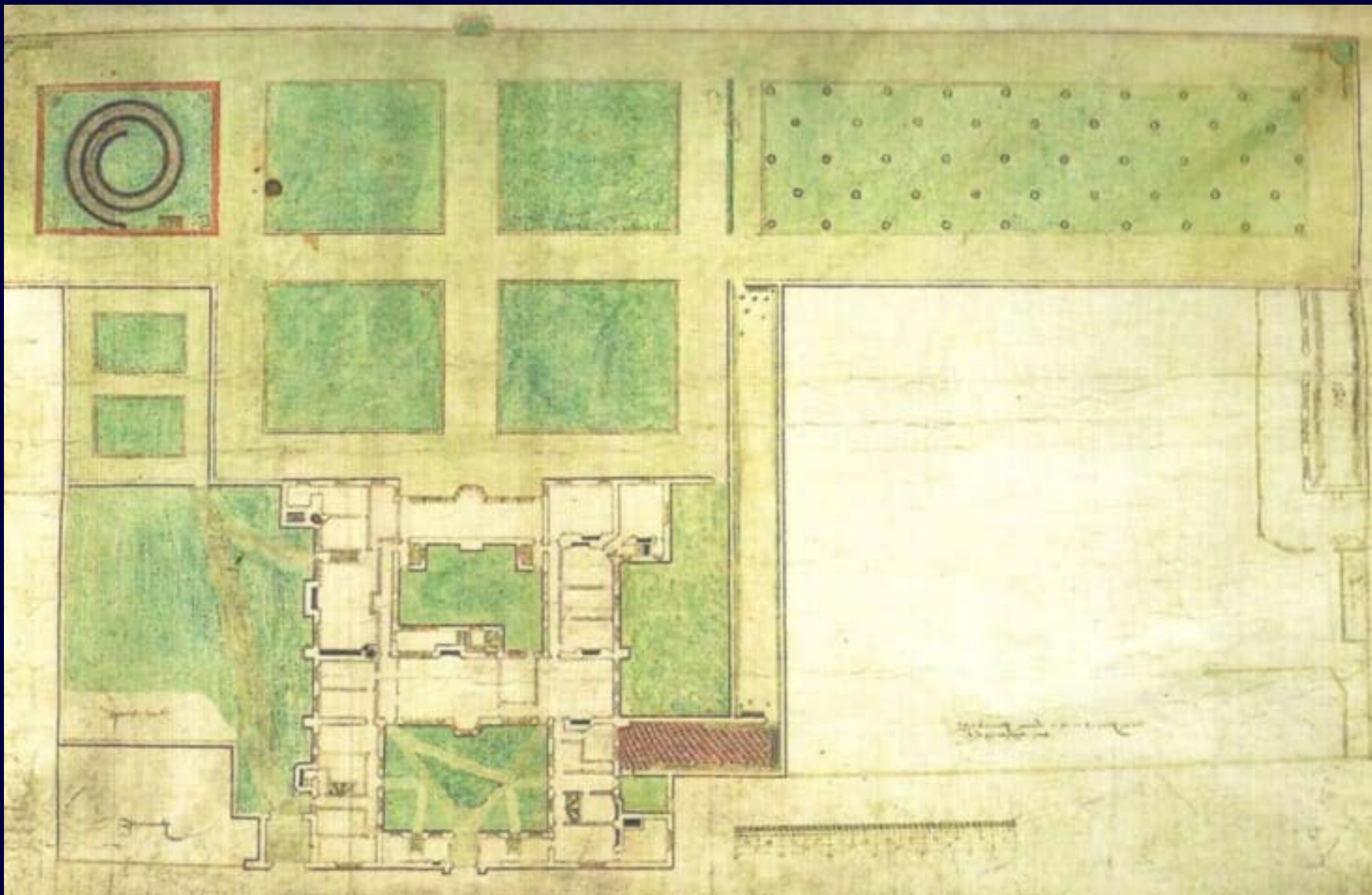


Cranborne Manor House



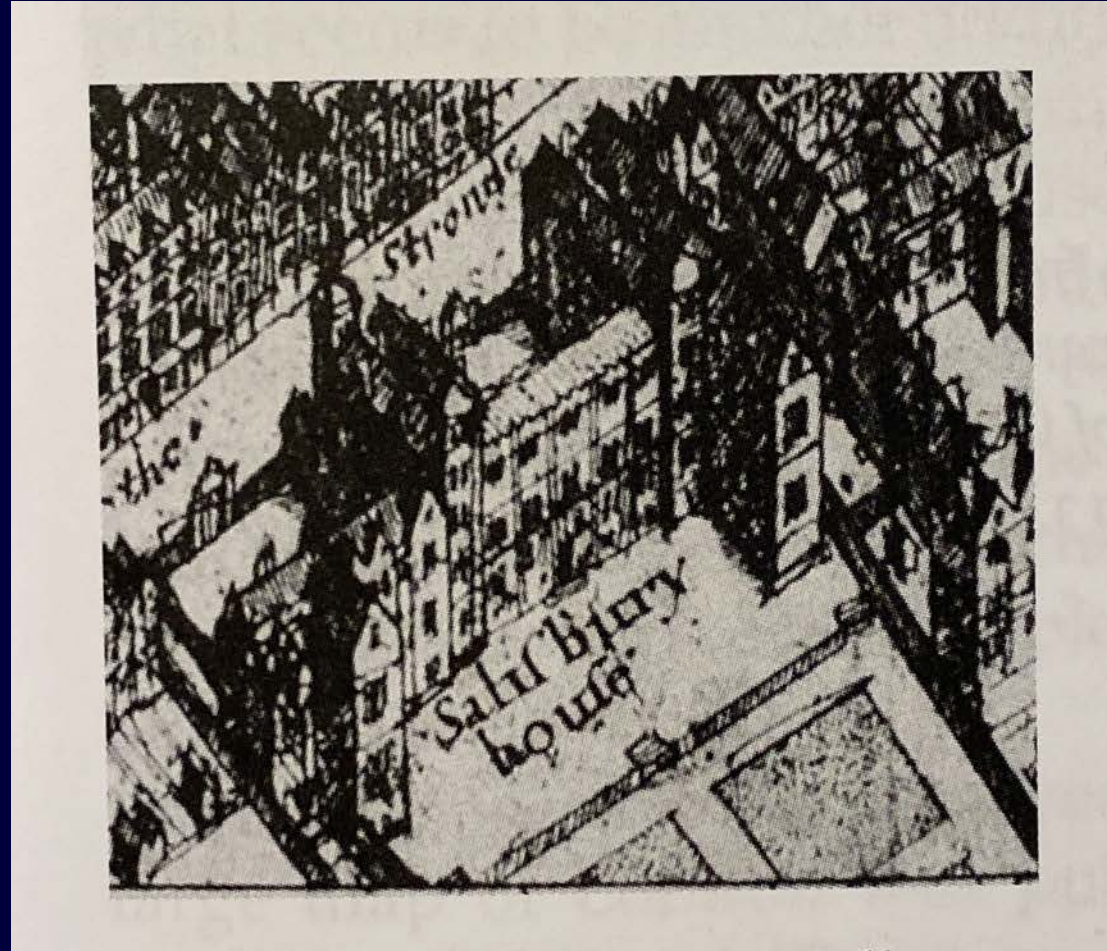
Cranborne Manor House





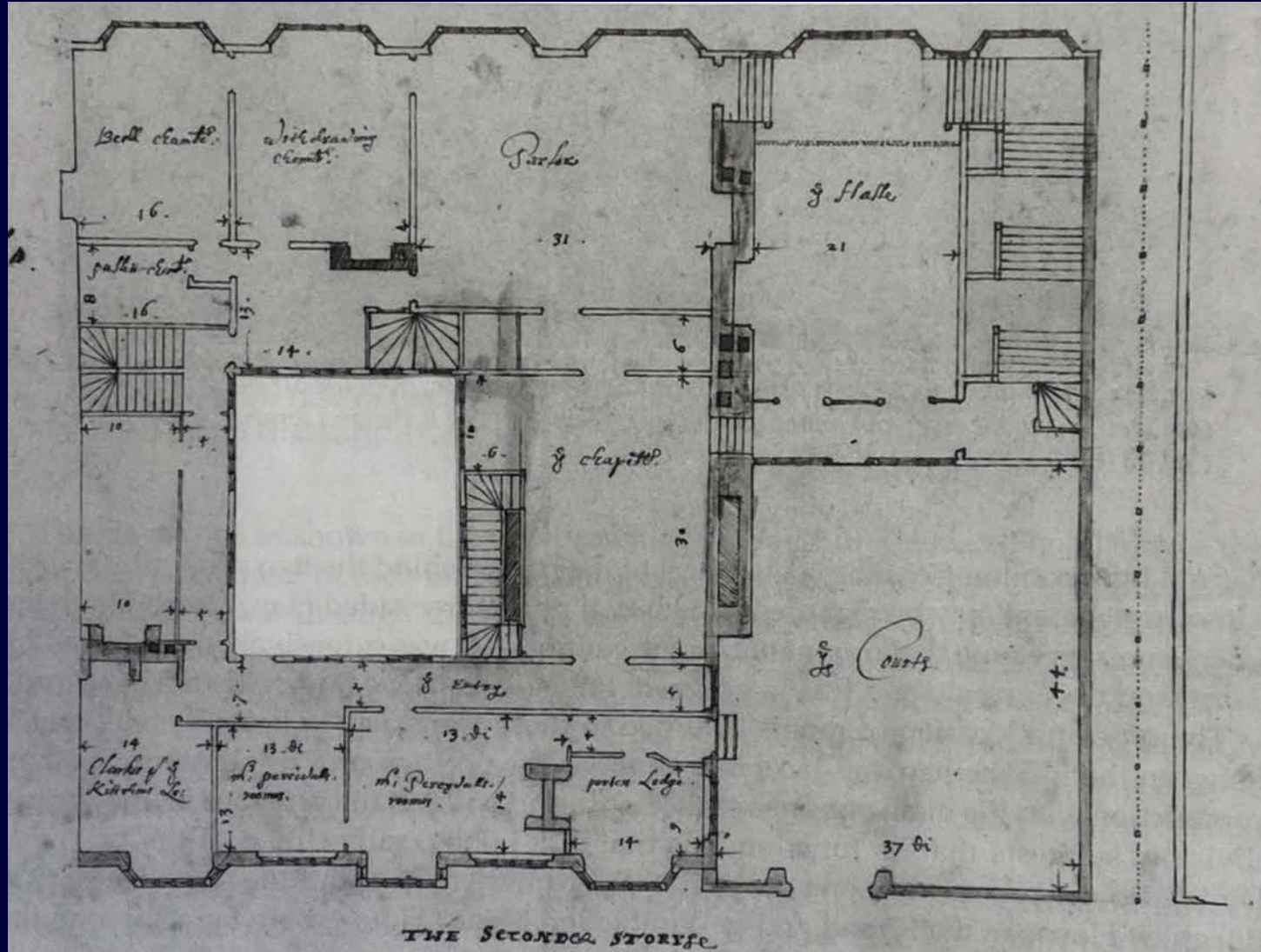
Plan of Burghley House, The Strand, London: Burghley House MS

Salisbury House



Wenceslaus Hollar, the 'West Central District' of London,
[the 1650s] © The Syndics of Cambridge University Library

Salisbury House



Simon Basil, Ground-floor plan for Great Salisbury House, from the Strand on the north side (bottom) to the river end on the south (top), 1600-02
© The Bodleian Library, University of Oxford

Hatfield House



Hatfield House Grand Staircase





Hatfield House Long Gallery



Houses of the Cecils

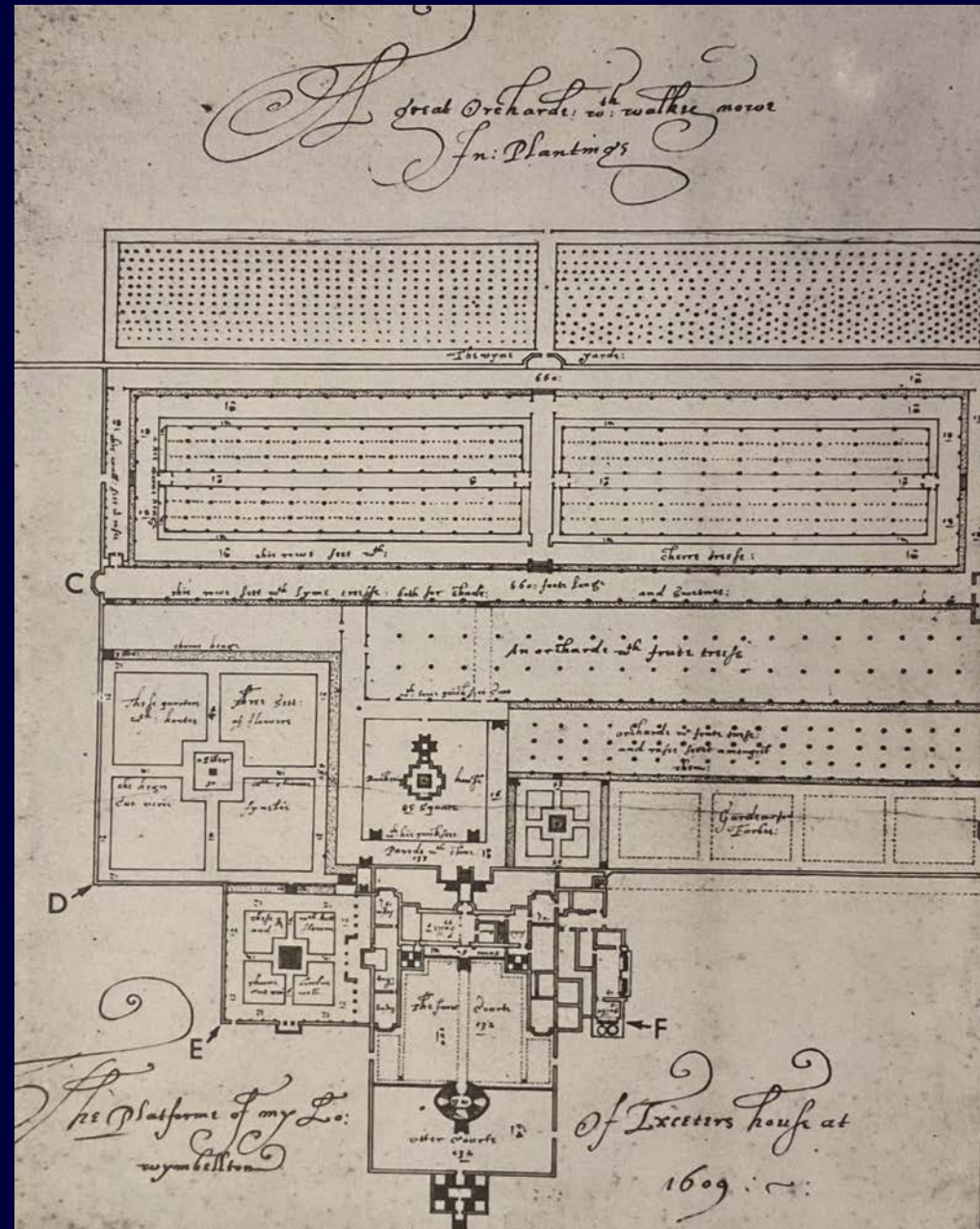


Snape Castle

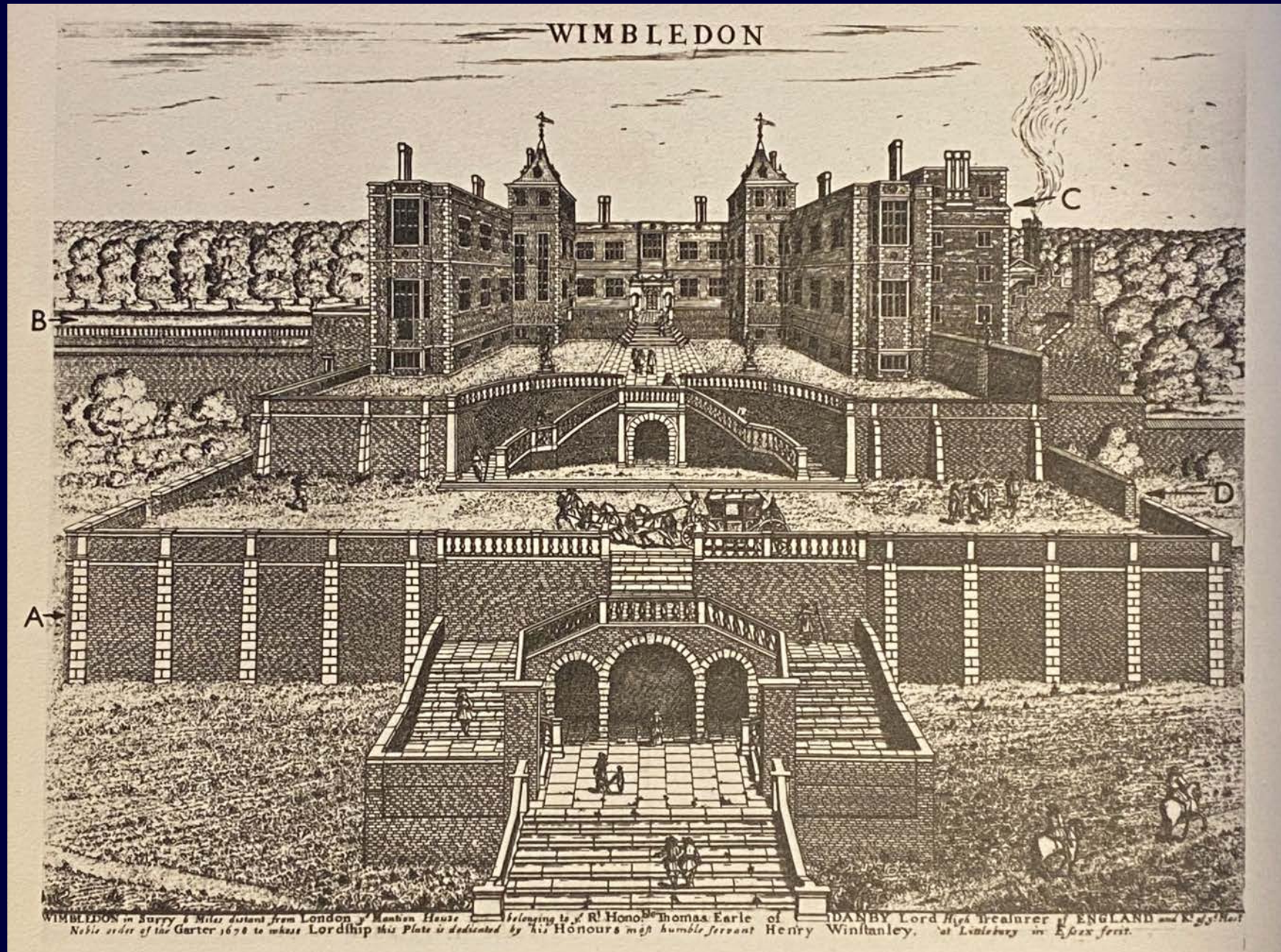


Wimbledon plan
by John Smythson
1609.

RIBA Drawings
Collection

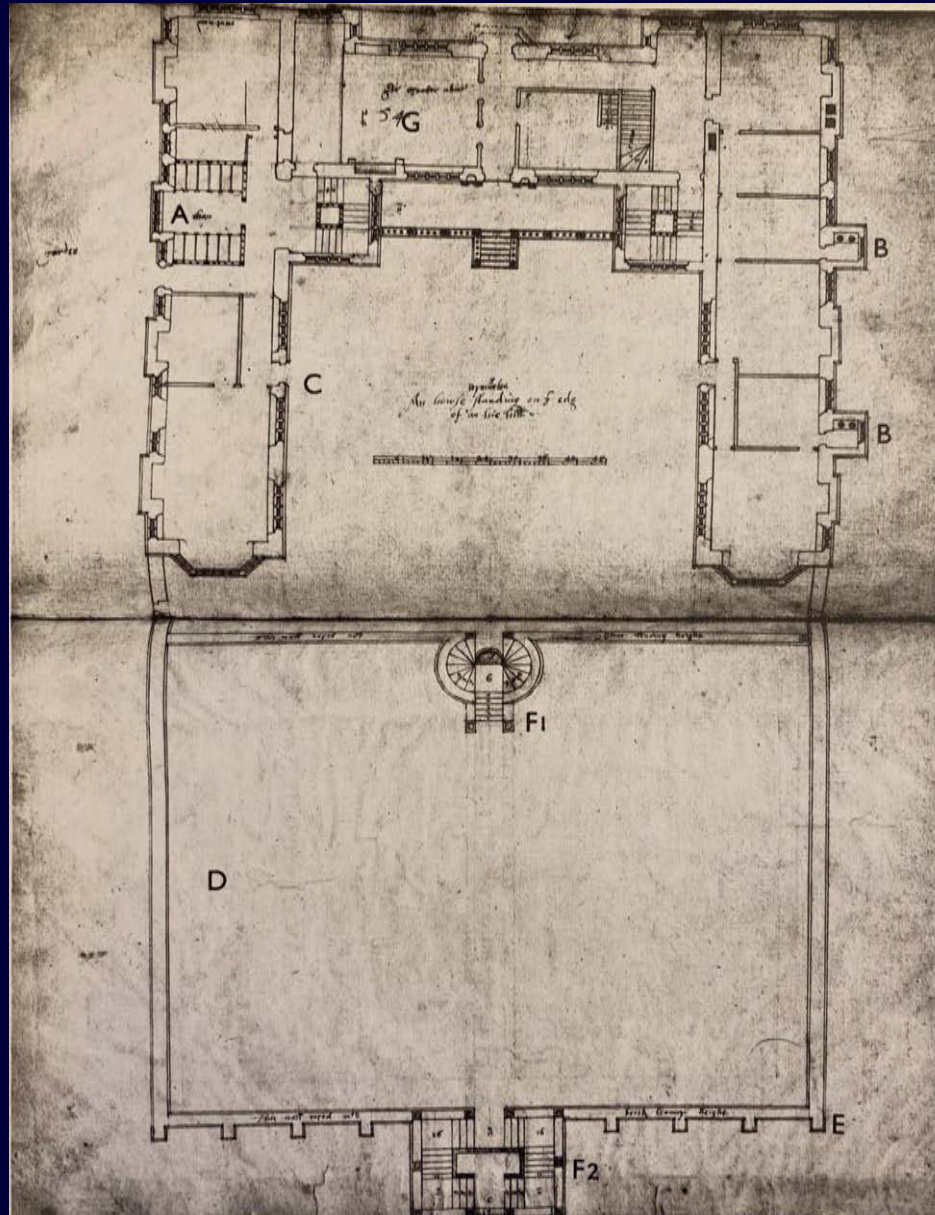


Wimbledon
Manor
House



Wimbledon Manor.

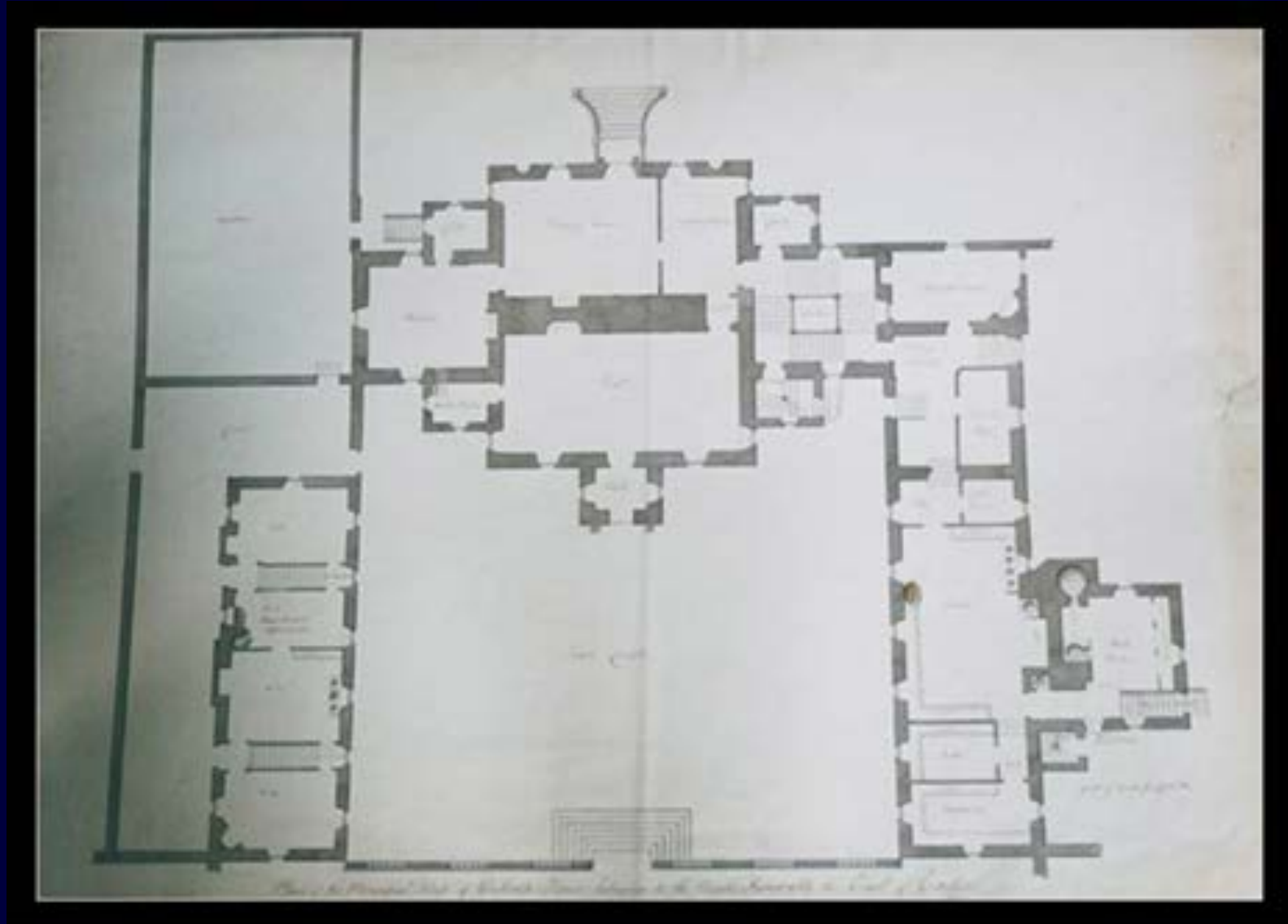
Sir John Soane's
Museum, London.



Wothorpe



Wothorpe



Wothorpe



Wothorpe





**William Cecil,
Lord Burghley**

House in Cannon Row Westminster

Wimbledon Rectory 1550

Burghley House, Stamford 1555

Theobalds House 1564

Burghley House London

Pymmes 1582

Beaufort House Chelsea 1595



**Thomas Cecil,
1st Earl of Exeter**

Inherits:

- Burghley House
- Burghley House London

Builds:

- 1576 Burghley House
- 1577 Snape Castle
- 1615 Wothorpe



**Robert Cecil,
1st Earl of Salisbury**

Inherits:

- Theobalds
- Beaufort House

Builds:

- 1601 Salisbury House London
- 1604 Cranbourne Manor
- 1607 Hatfield House



Mildred Cecil.

Hatfield House



