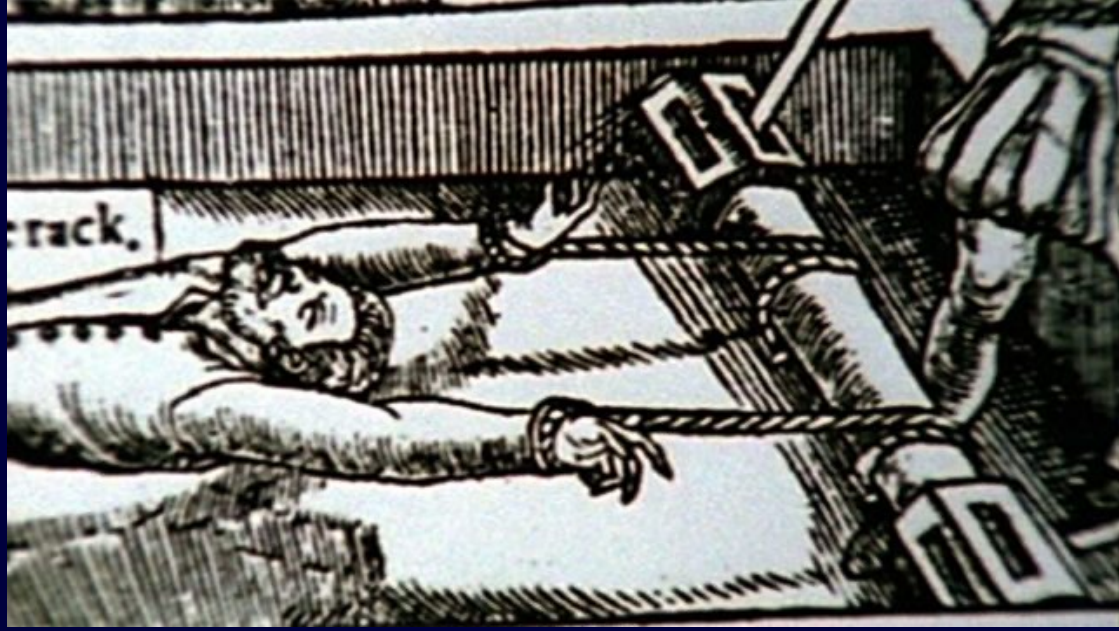




**GRESHAM**  
COLLEGE

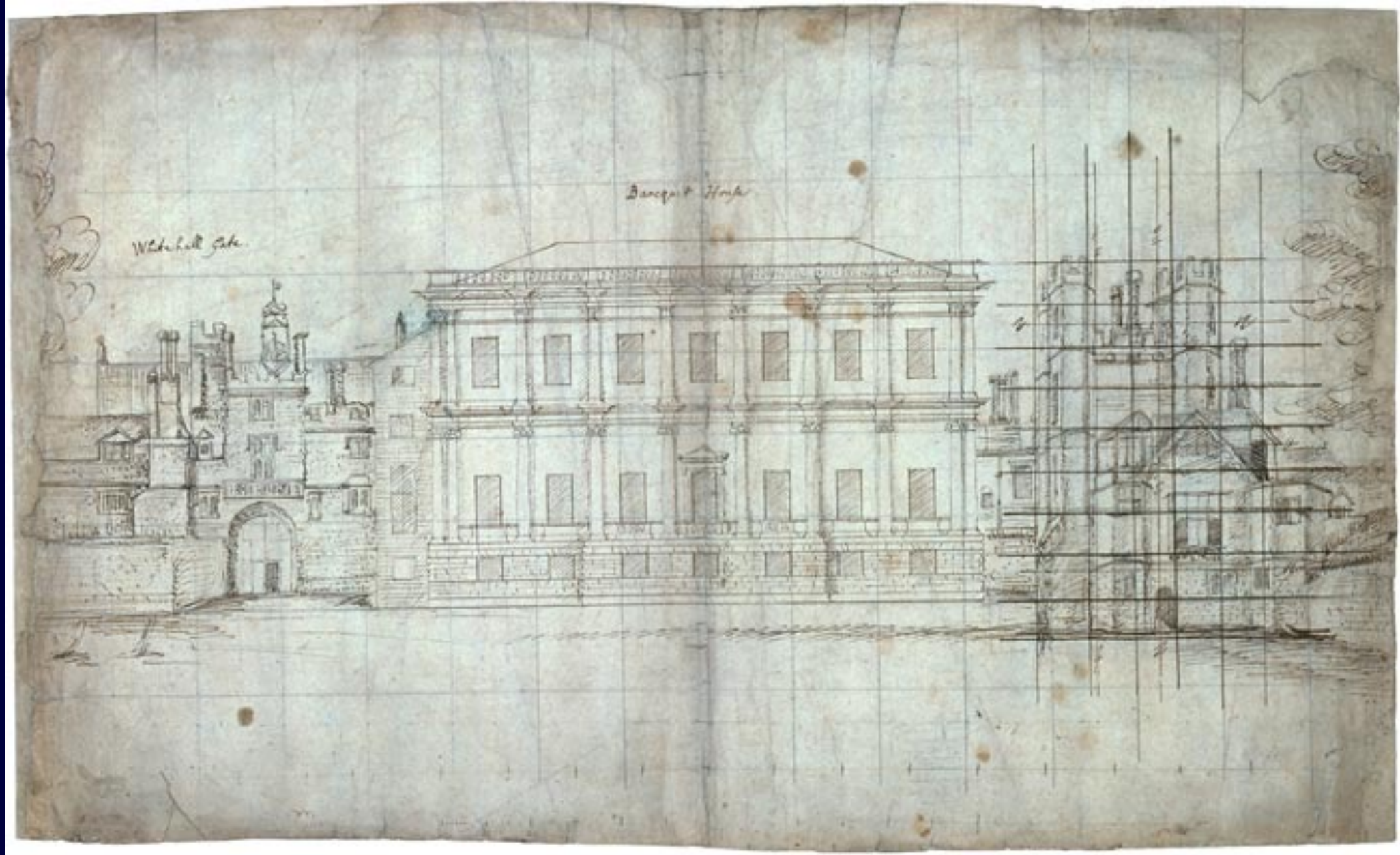
# Inigo Jones and the Architecture of Necessity

Professor Simon Thurley CBE





Anthony van Dyck - Philip Herbert, 4th Earl of Pembroke (Public Domain) and right, Ludovic Stuart (1574–1624), 2nd Duke of Lennox and 1st Duke of Richmond after Daniel Mytens, (National Trust, Petworth House).



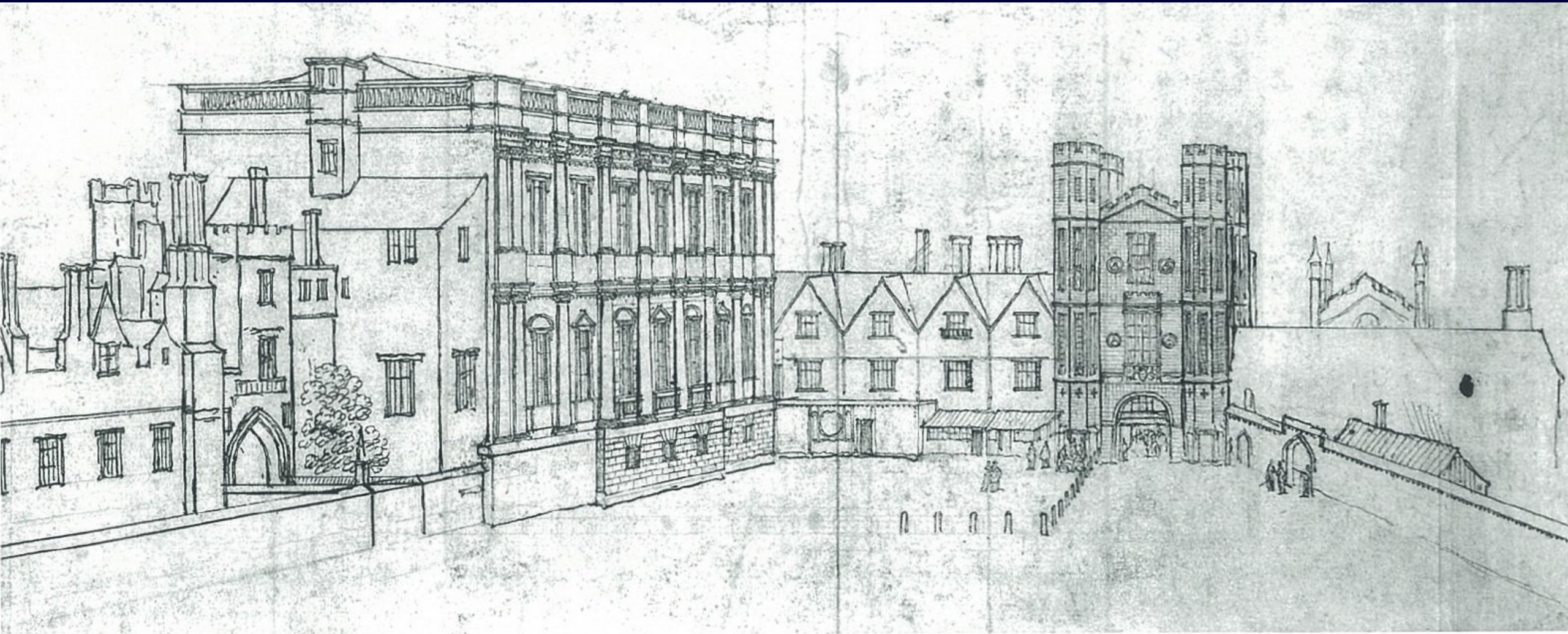
Inigo Jones. Drawing for a Masque backdrop 1623 (The Pierpont Morgan Library New York)

The Royal Collection. H.M. The Queen





Drawing:  
Copyright  
Stephen  
Conlin.



Whitehall Palace attrib. Wenceslaus Hollar c.1640. Master and Fellows Magdalene College Cambridge.



*Engraved by Stewart & Burnet from a Drawing by J. Burnet.*

*for the Beauties of England and Wales. E.W.B. del.*

**ST JAMES'S PALACE,**  
*(North west view)*  
**Westminster**

*London Published by Vernor, Hood & Sharpe, Poultry, 1809.*

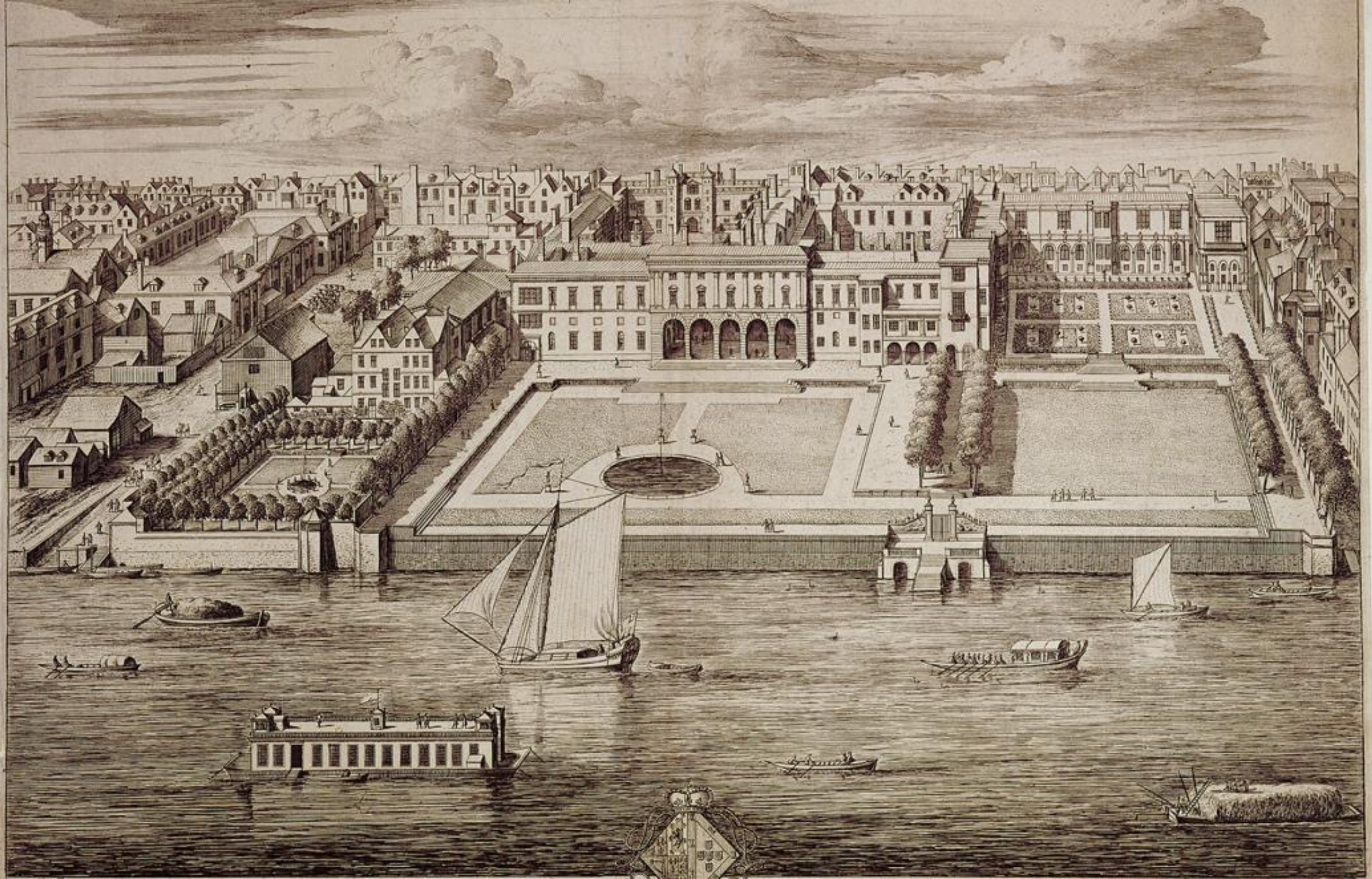


The Royal Collection. H.M.  
The Queen





The most renowned and most Excellent HENRETTA  
MARIA by the Grace of GOD Queene of Great  
Brittaine France and Ireland, etc:  
As to be sold by Peter Peake, at his Shop neere Holborn Church



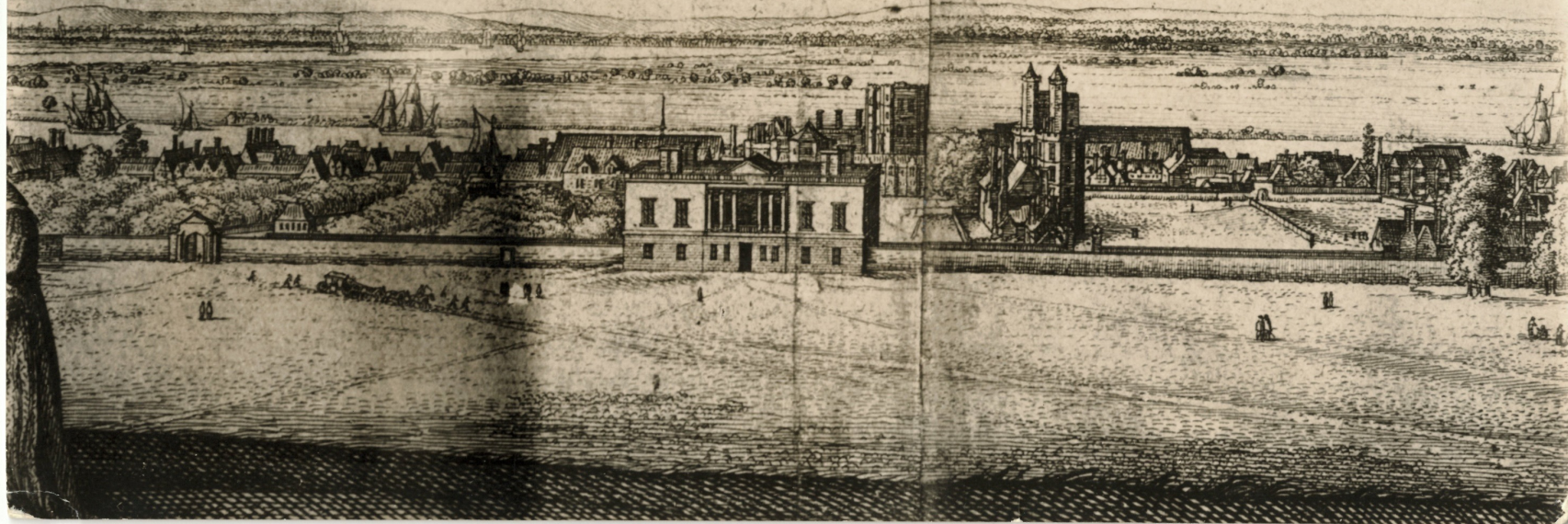
RICHMOND



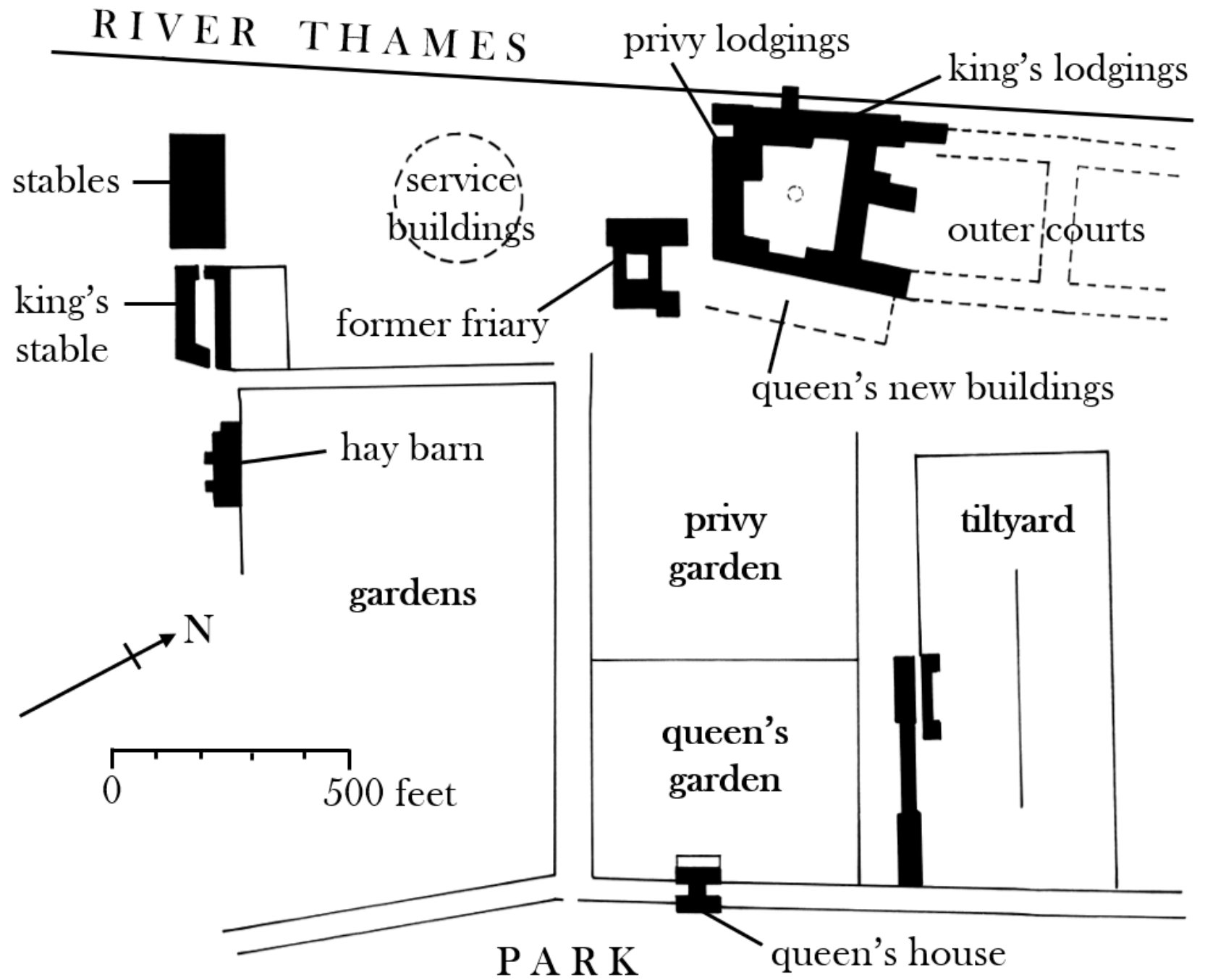
W. Hollar fecit 1678



# GRANWICH.



Greenwich



Greenwich Palace  
c.1640. Drawing  
copyright Simon  
Thurley

The Royal Collection.  
H.M. The Queen





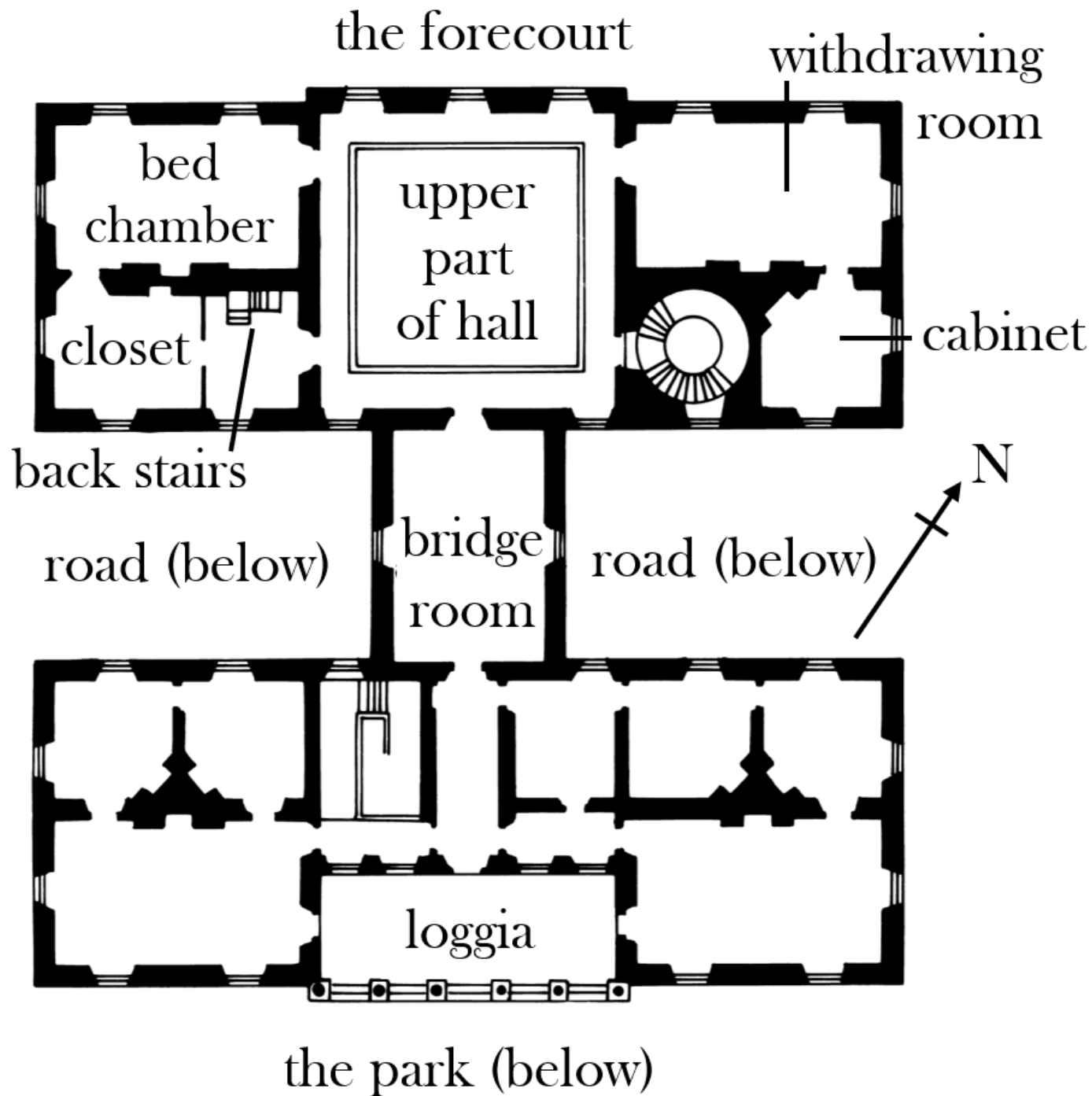


The most renowned and most Excellent **HENRETTA**  
**MARIA** by the Grace of **GOD** Queene of Great  
Brittaine France and Ireland, etc:  
As to be sold by *Retti Peake*, at his Shop neere *St. Dunstons Church*



The Royal Collection. H.M.  
The Queen





First floor plan of the Queen's House Greenwich in c.1640. Drawing Copyright Simon Thurley.



The Royal Collection.  
H.M. The Queen



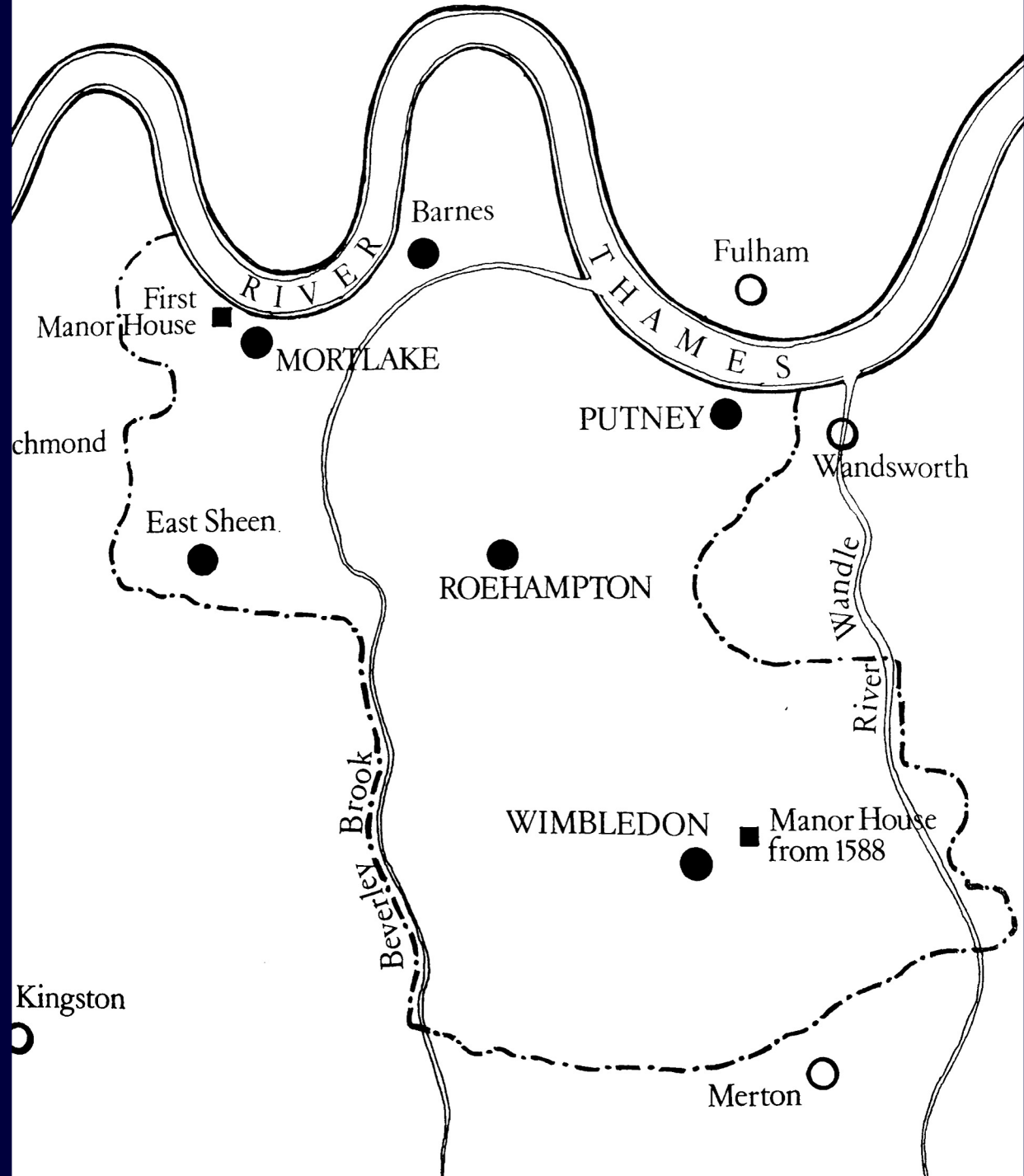


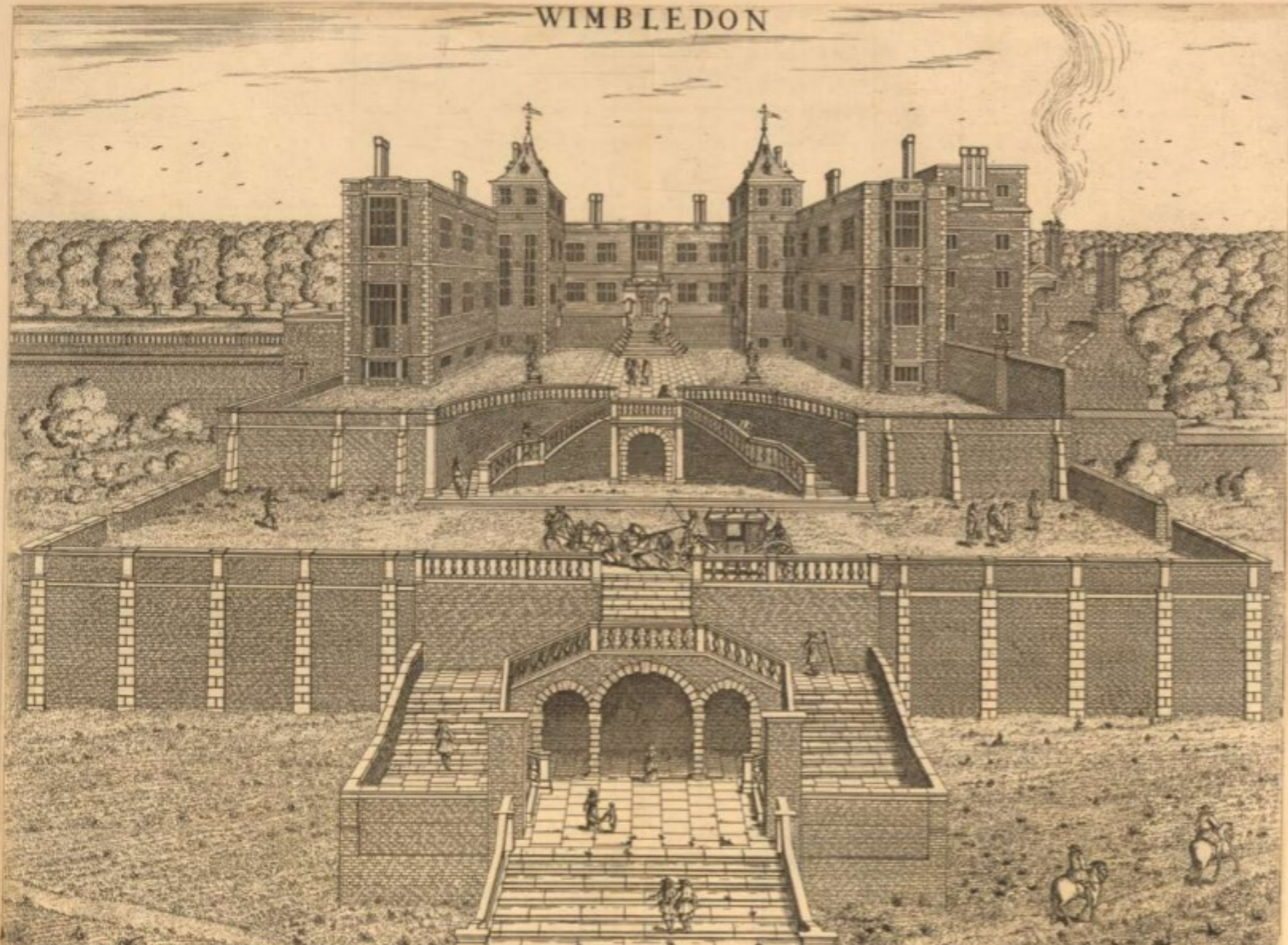




Photo: Country Life



# WIMBLEDON

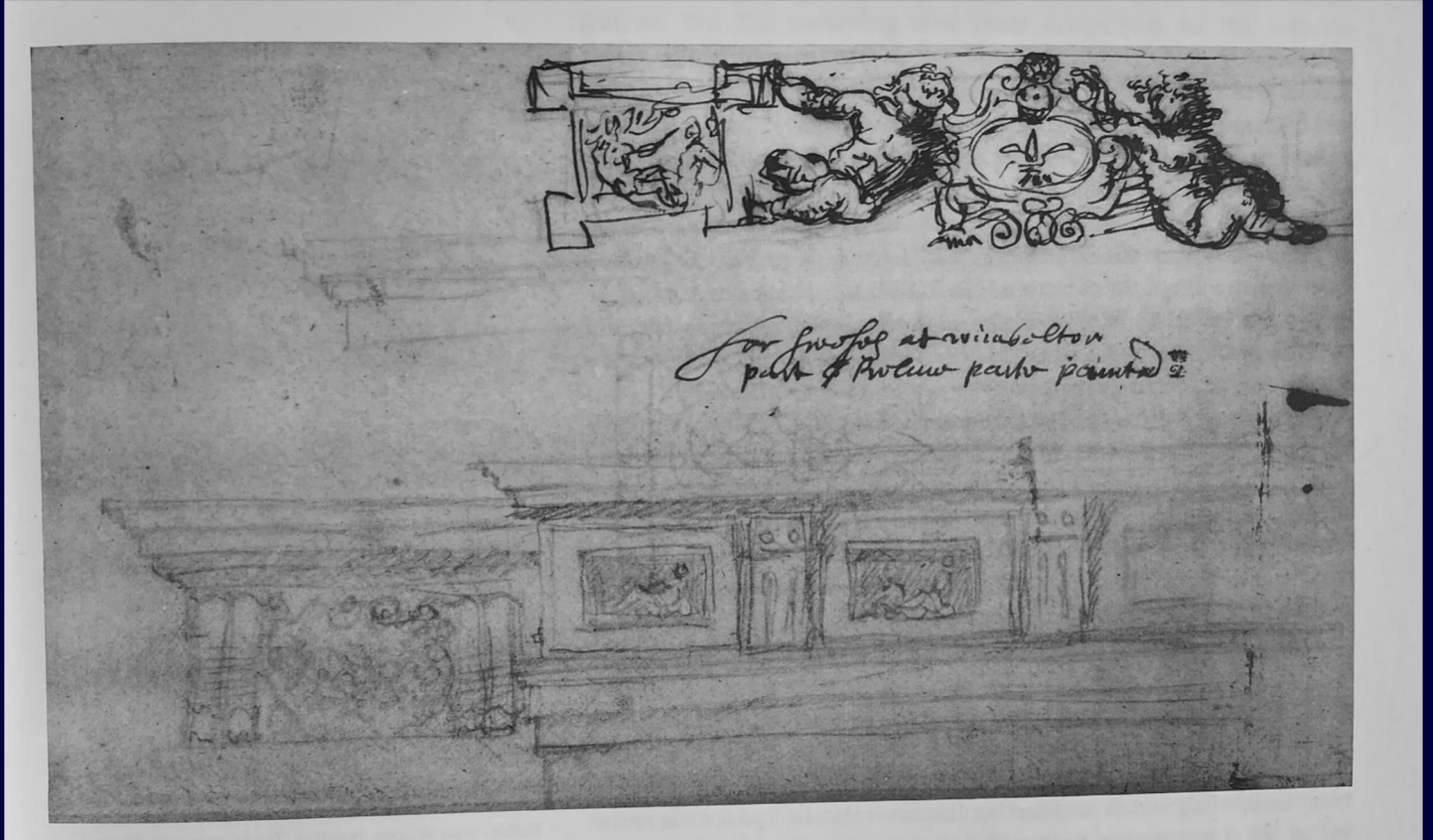


WIMBLEDON in Surrey 4 Miles distant from London 2 Mansion House belonging to J<sup>r</sup> R<sup>o</sup> Hon<sup>ble</sup> Thomas Earle of DANBY Lord High Treasurer of ENGLAND and K<sup>ing</sup> of <sup>the</sup> <sup>North</sup> Wales  
Noble order of the Garter 1678 to whose Lordship this Plate is dedicated by his Honours most humble servant Henry Wintanley. at Littlebury in Essex fecit.



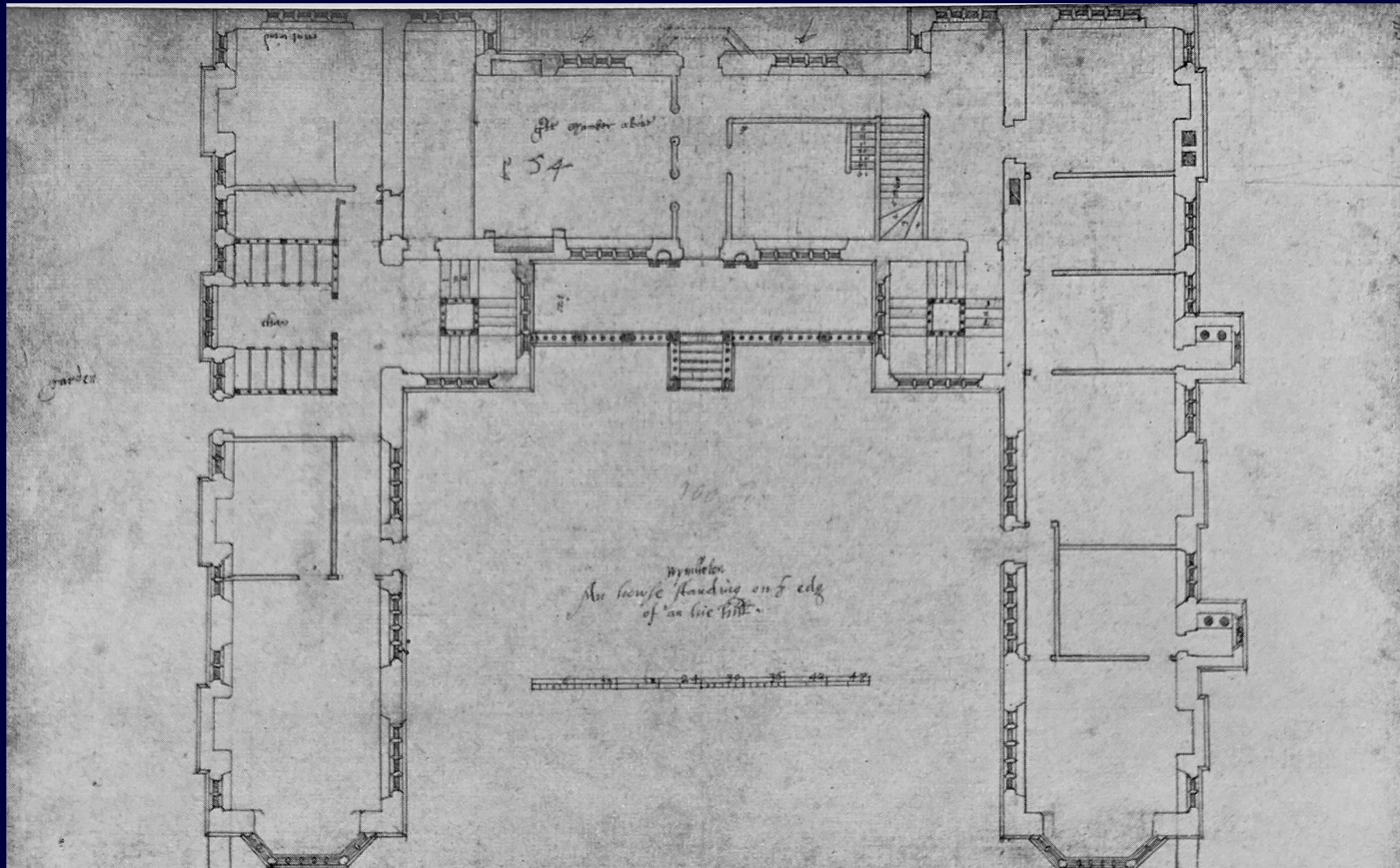
Inigo Jones. Public  
Domain.





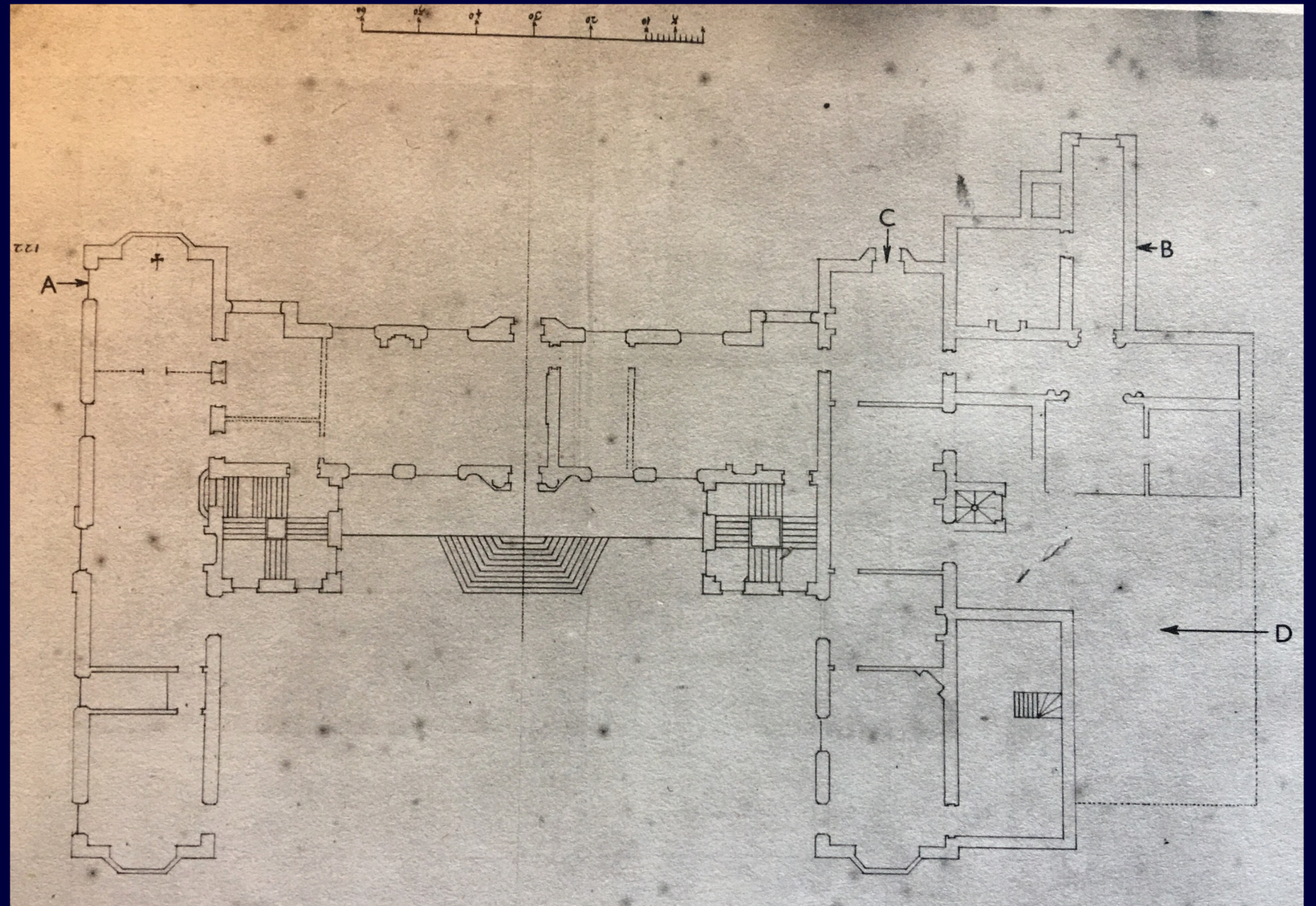
For fresco at Woburn  
part of Woburn park painted

Royal Institute of British Architects:  
Drawings Collection and Archives.



John Thorpe, Wimbleton Manor. Sir John Soane's Museum.





Nicholas Hawksmoor, survey  
of Wimbledon Manor c.1690.  
Warden and Fellows of All  
Souls College Oxford





In the Collection of the late Earl of Bradford.

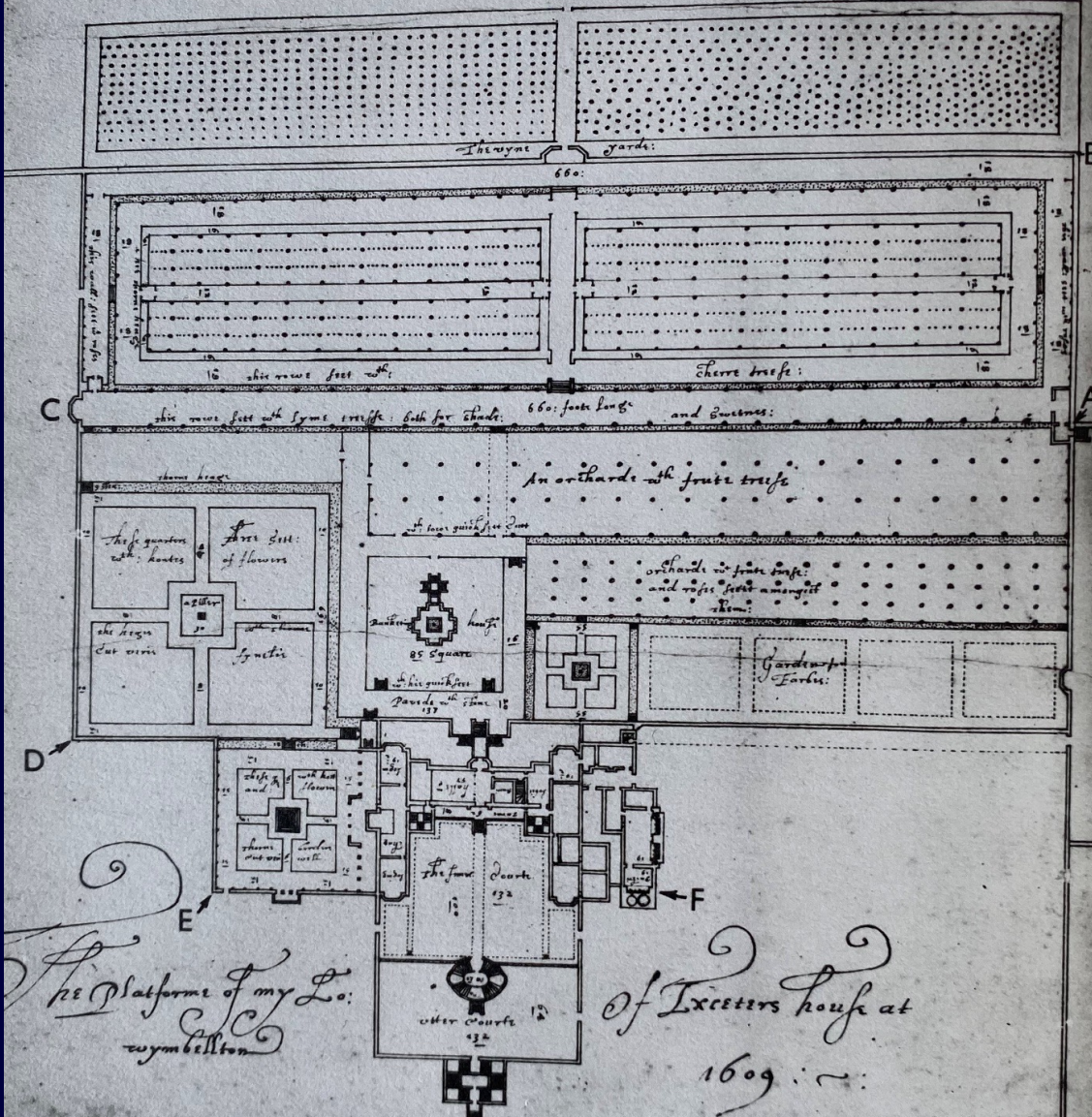
George Digby, 2nd  
Earl of Bristol, by Sir  
Anthony van Dyck,  
c.1638–9.  
(Public Domain)



Thomas Osborne, Earl  
of Danby. (Public  
Domain)

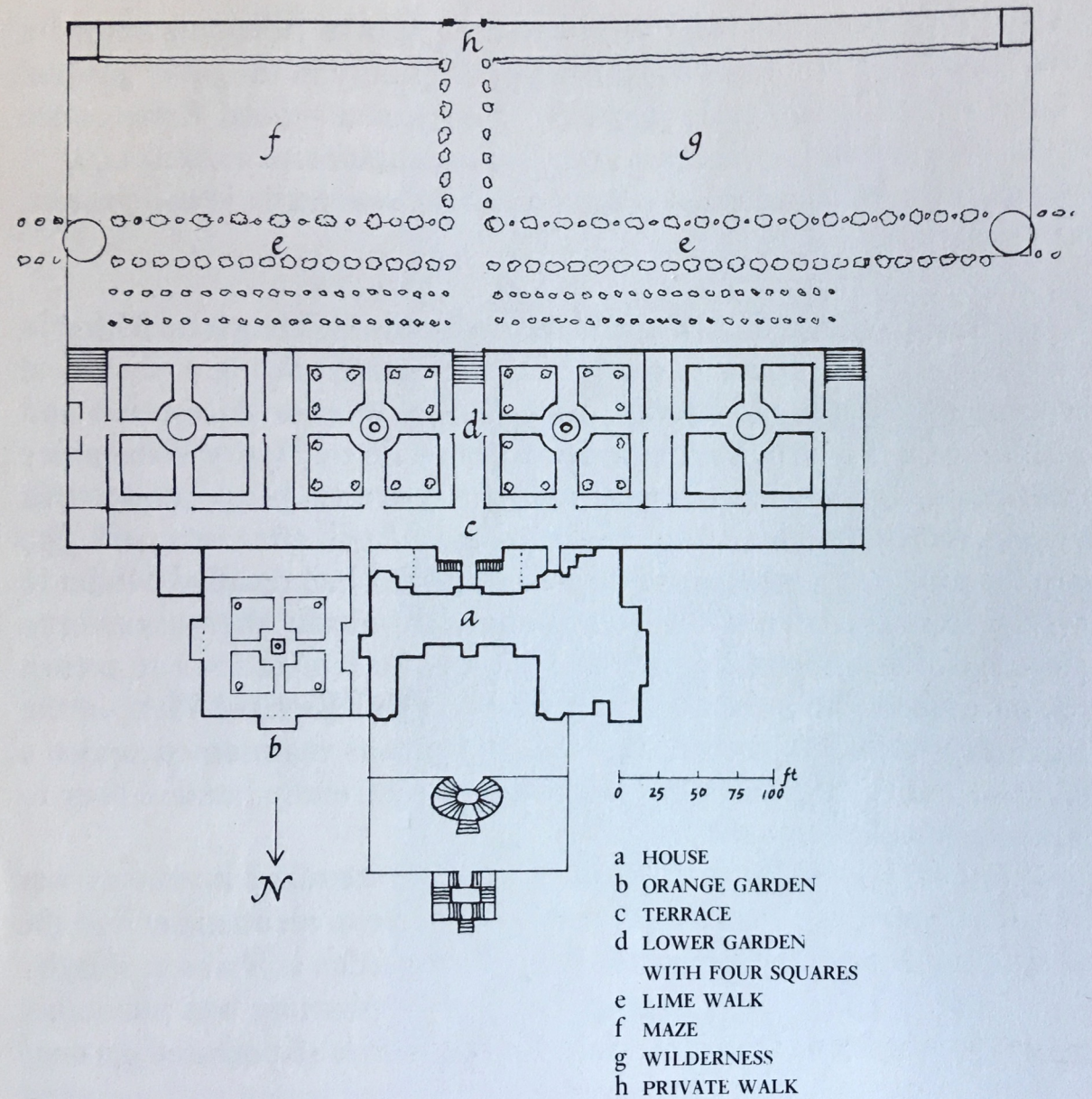


*The Great Orchard: w<sup>th</sup> walke more  
In: Plantings*



Robert Smythson, a plan of Wimbledon Manor and Gardens: Royal Institute of British Architects Drawings Collection and Archives.

Sir Roy Strong's reconstruction of Wimbledon Manor Gardens in c.1640.

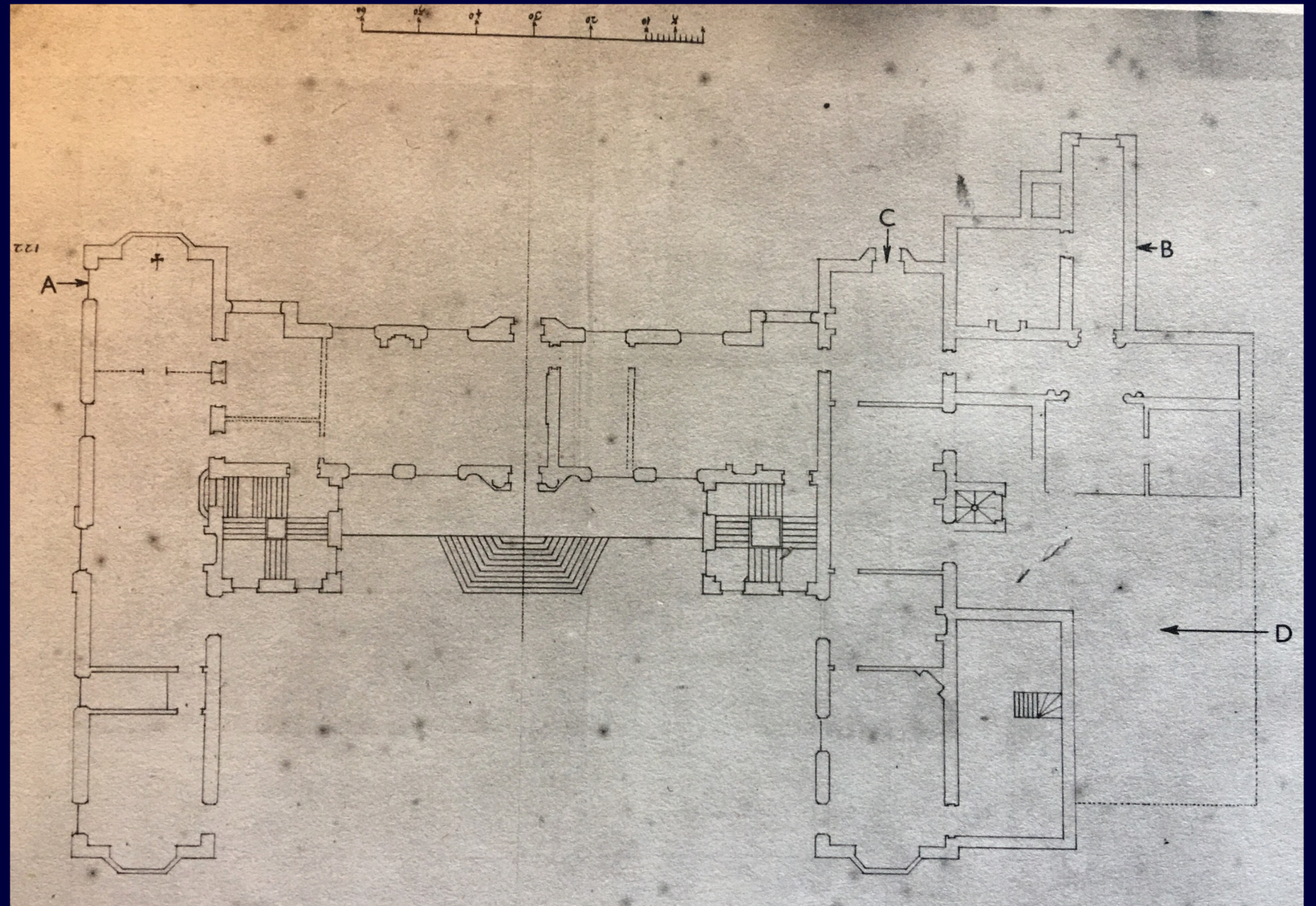




Wimbledon as it is seen from the great Walke of Trees in the Princely garden with a side Prospect of that part which is towards the Orange Garden ~  
And with the View of the Orange Garden and Orange house. Henry Winstanley at Littlebury in Essex fecit.



Thy first birth Mary, was into a tombe  
 And sad Diana Cozenid, thy blest wombe  
 To heavin thou then wert fruitfull, now to earth  
 Which can't give Saints, as well as Kings, a birth  
 Still may thy wombe bee fruitfull, like the vyne  
 To Propagate as farr, as Sunne can shine  
 And thou rare (Mirror) Prince of so great birth  
 At scarce this day, thy Paratche one earth  
 O may thy Grandfyr, wisdome vertens truth  
 Spring in thy breast, to age thee in thy youth  
 And when thy Father, shall in heauen, raigne  
 God grant thou bee, our second Charlemaigne.  
 As was sold by John Stafford in black horse albr at fleet bride

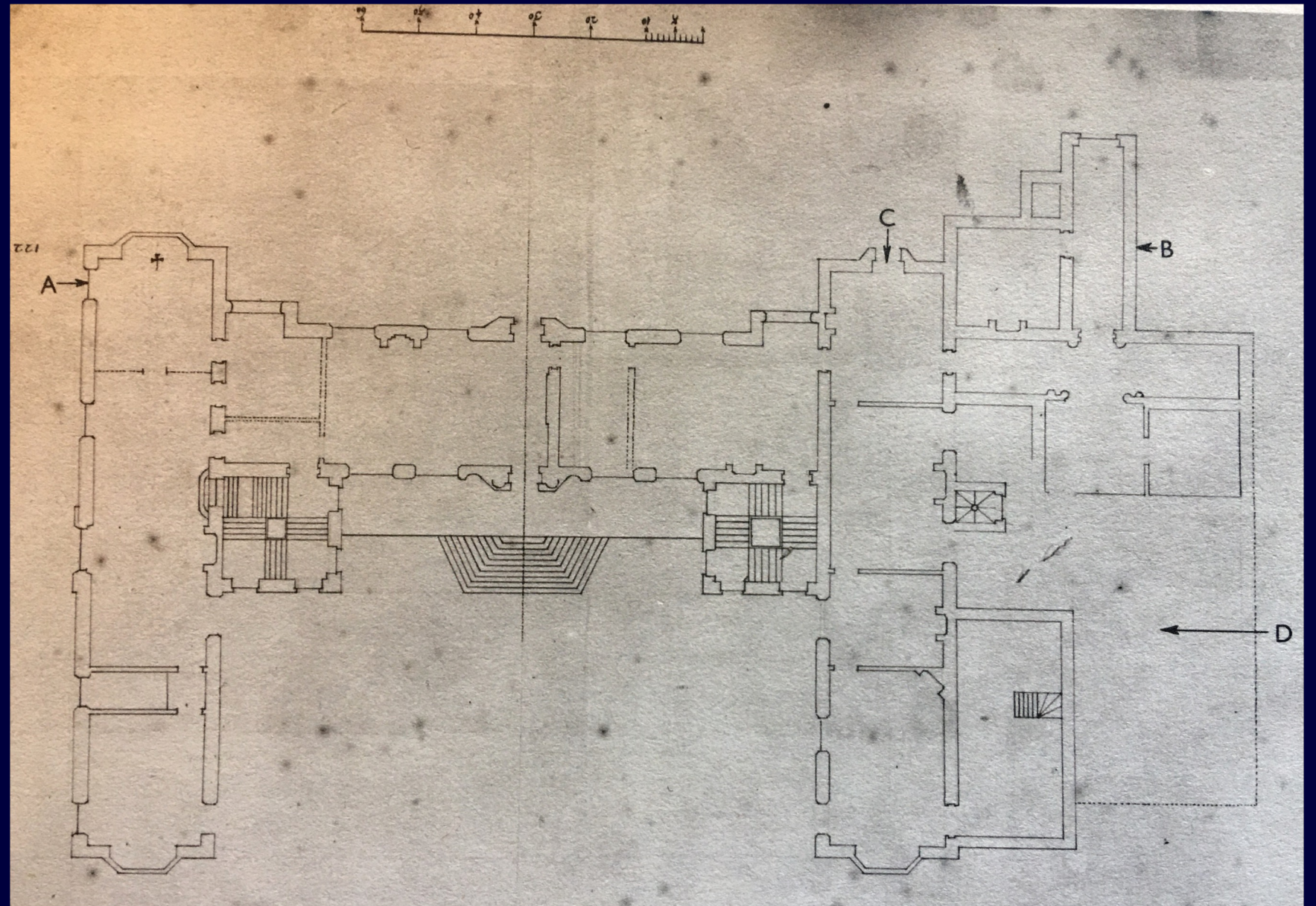


Nicholas Hawksmoor, survey  
of Wimbledon Manor c.1690.  
Warden and Fellows of All  
Souls College Oxford

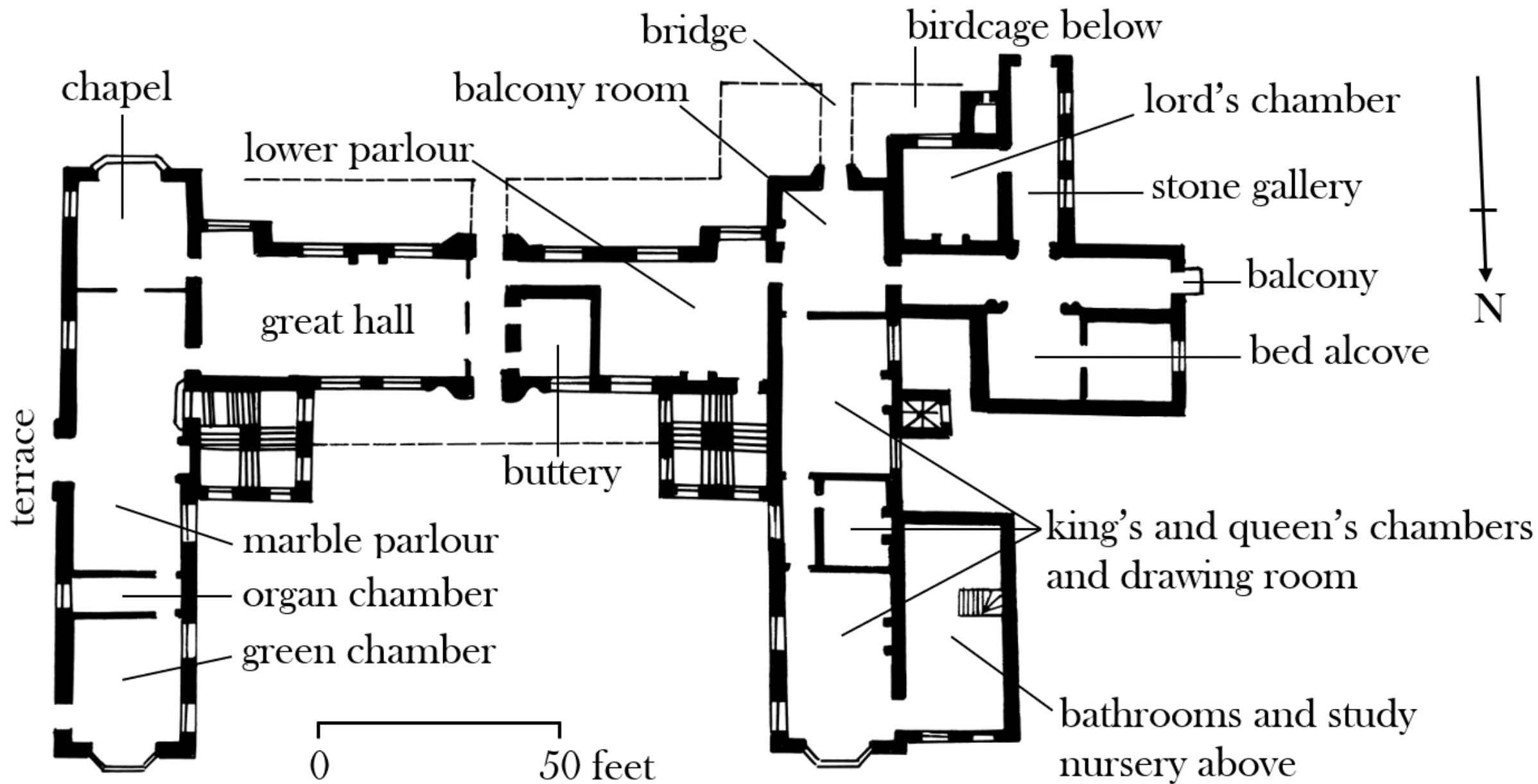




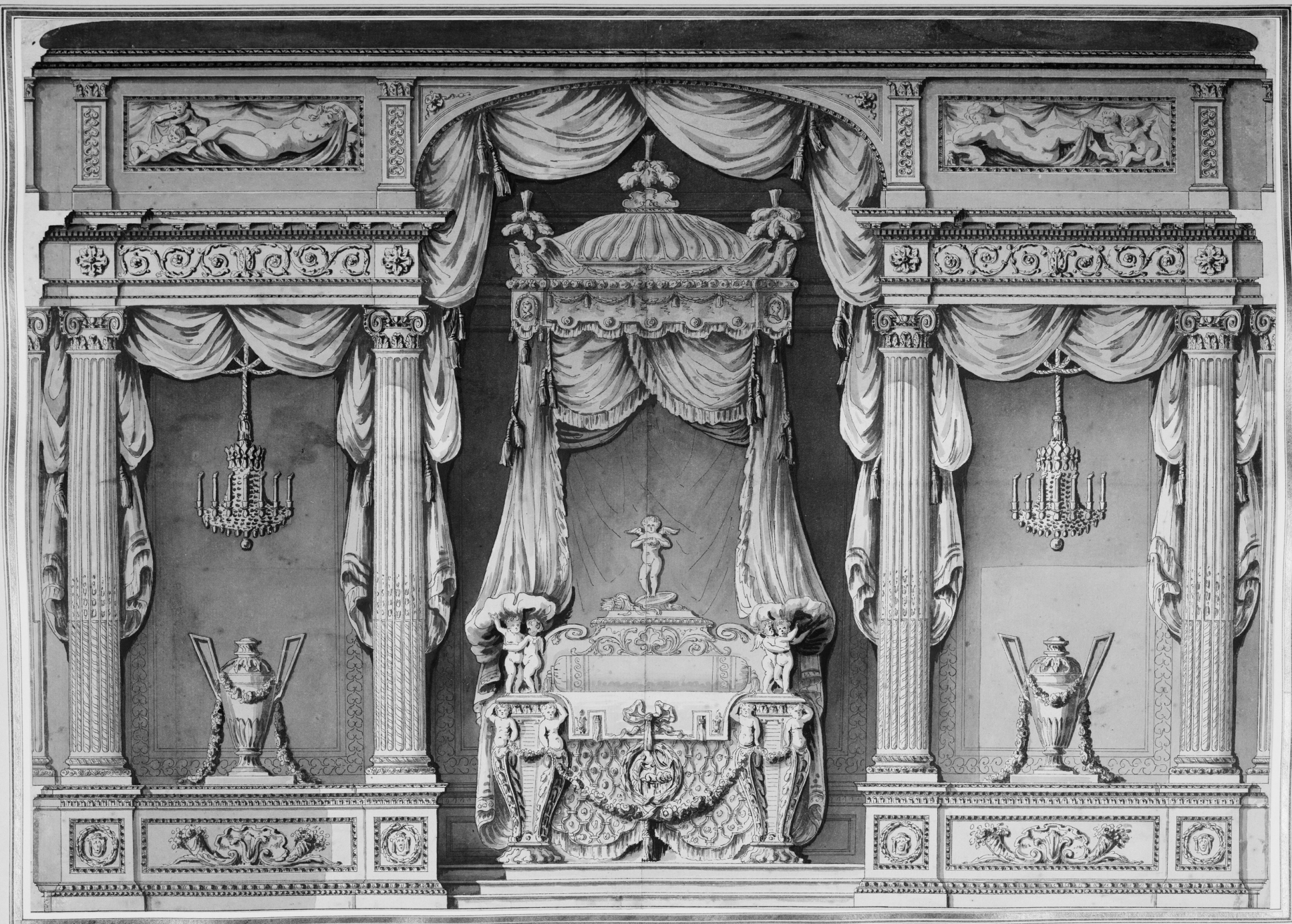
Wimbledon as it is seen from the great Walk of Trees in the Princely garden, with a side Prospect of that part which is towards the Orange Garden ~  
And with the View of the Orange Garden and Orange house. Henry Winstanley at Littlebury in Essex fecit.



Nicholas Hawksmoor, survey  
of Wimbledon Manor c.1690.  
Warden and Fellows of All  
Souls College Oxford



Reconstructed ground floor plan of Wimbledon Manor c.1640. Drawing Copyright Simon Thurley.





Powys Castle State Bedroom. National Trust. Photograph Paul Higham.

The Royal Collection. H.M. The Queen.



called Wimbleton, which was a  
 Windmill by the road an eminent Landmark, remo-  
 ved near to the Thames in Wandsworth parish.  
 From the Rode in this Common about  $\frac{1}{2}$  of a mile  
 Southward stands Wimbleton House, a noble seat  
 facing the North: now the Earle of Bristol's  
 This House was built in the raige of Queen Elizabeth  
 A. 1588. by <sup>intabill</sup> Cecill, as appears by  
 Inscription on the outside of the House: which is  
 adorned with Fresco. Fine Parks and Garden  
 belong to this House: but the Parks is low, marsh  
 ground. The Prospect of the House and Parks  
 to the Rode is thus.

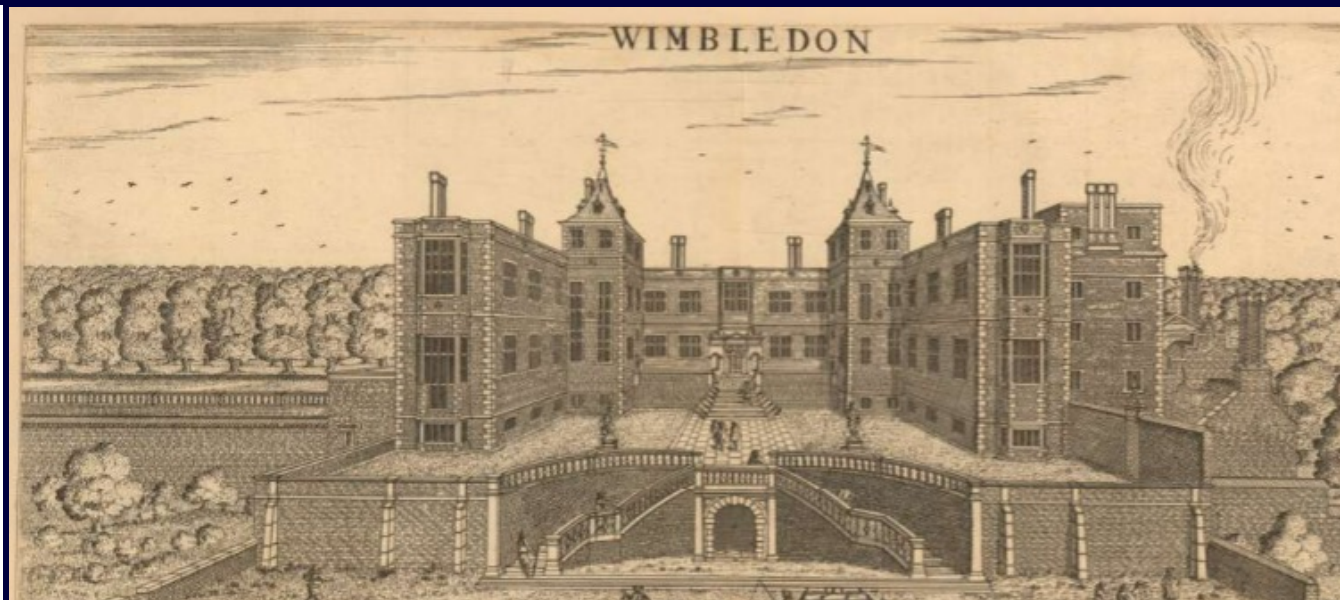
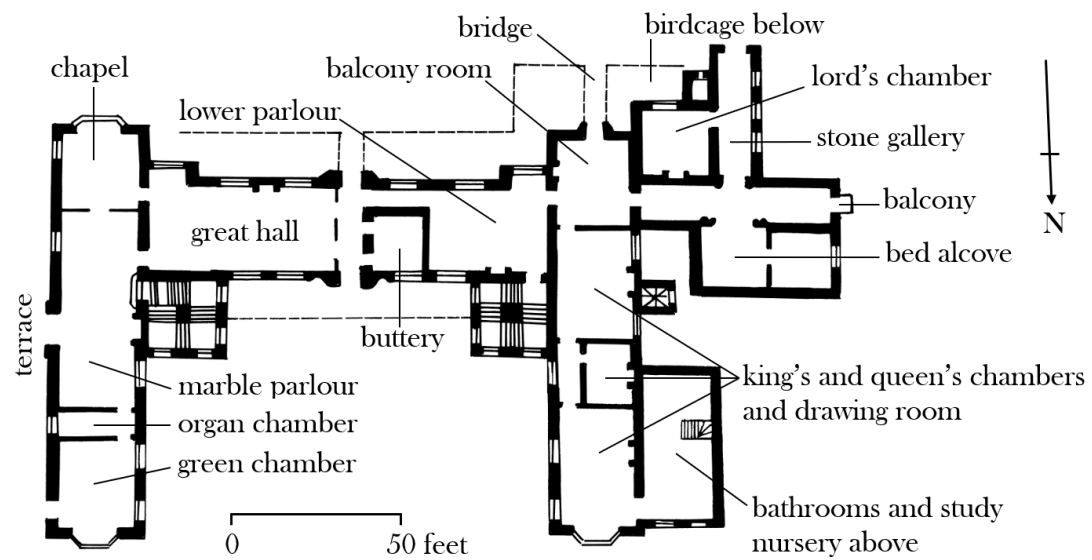
but 2 colours  
 the yellow ochre &  
 burnt ochre.



cont. where the sea  
 of St. Edmund. now  
 all good Rivers & the  
 garden of the King  
 St. Great & bene  
 St. in the sea, and  
 the Rode

In Wimbleton-heath is a Round Campe, made  
 by the Danes, as appears by the Chronicle.  
 Here are Pops on the Common parting the Parish  
 viz. Wimbleton-Common, & Putney-heath.

John Aubrey's sketch of Wimbleton Manor in 1673 (Bodleian Library)



Reconstructed ground floor plan of Wimbledon Manor  
c.1640. Drawing Copyright Simon Thurley.