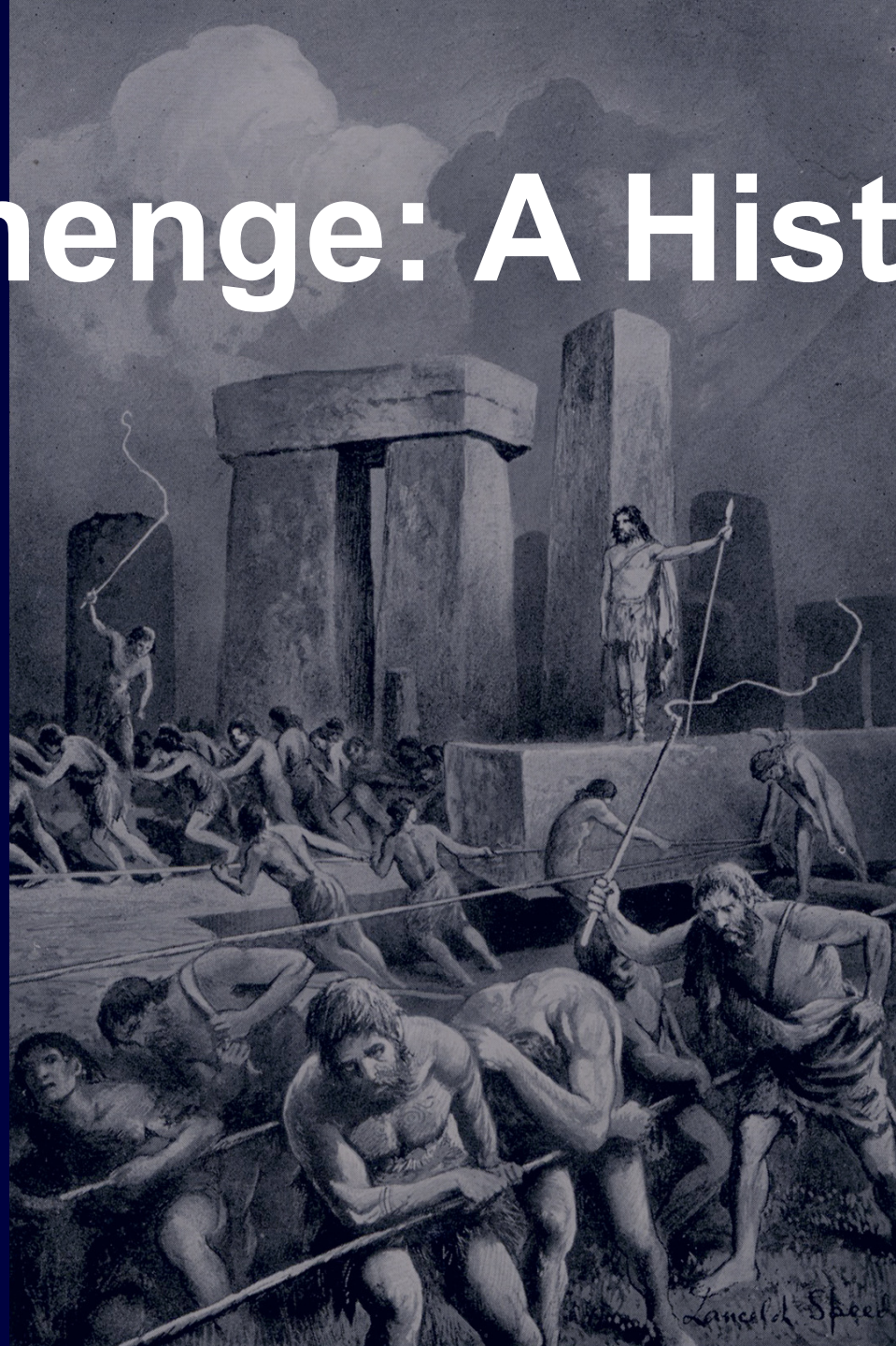


Stonehenge: A History

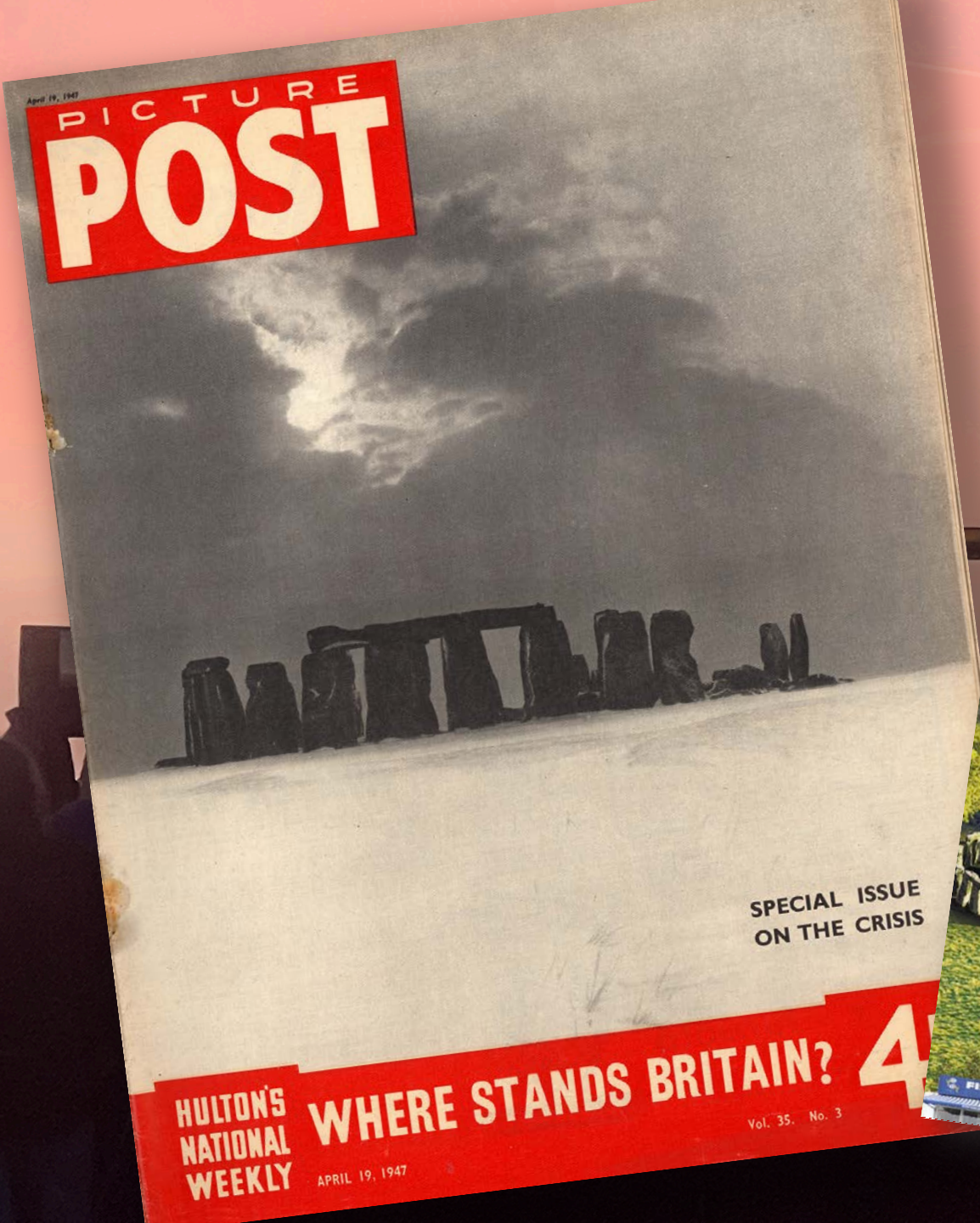
Mike Pitts



EST. 1597

GRESHAM
COLLEGE





THE Sun SAYS
REBEL Tory MPs could today destroy their Prime Minister, their Government and the Brexit the 17.4million majority voted for.
A "peace" deal struck last night is still a knife-edge Commons votes pones an inevitable showdown. In the end Remainer MPs have a simple choice: trust the people of Great Britain . . . or trigger a shameful betrayal.
See Pages 4 & 5

* A BANTAM BOOK

CHOOSE YOUR OWN ADVENTURE  **35**

YOU'RE THE STAR OF THE
STORY! CHOOSE FROM 19 POSSIBLE ENDINGS.

JOURNEY TO STONEHENGE

BY FRED GRAVER



ILLUSTRATED BY LESLIE MORRILL

If you decide to stay in the guest tent,
turn to page 56.

If you decide to stay with P.J.,
turn to page 16.





Arthur ApSimon 1979



Adam Stanford 2008





The manner of their attire and
painting them selves when
they goe to their generall
huntings or at their
Solemne feasts.

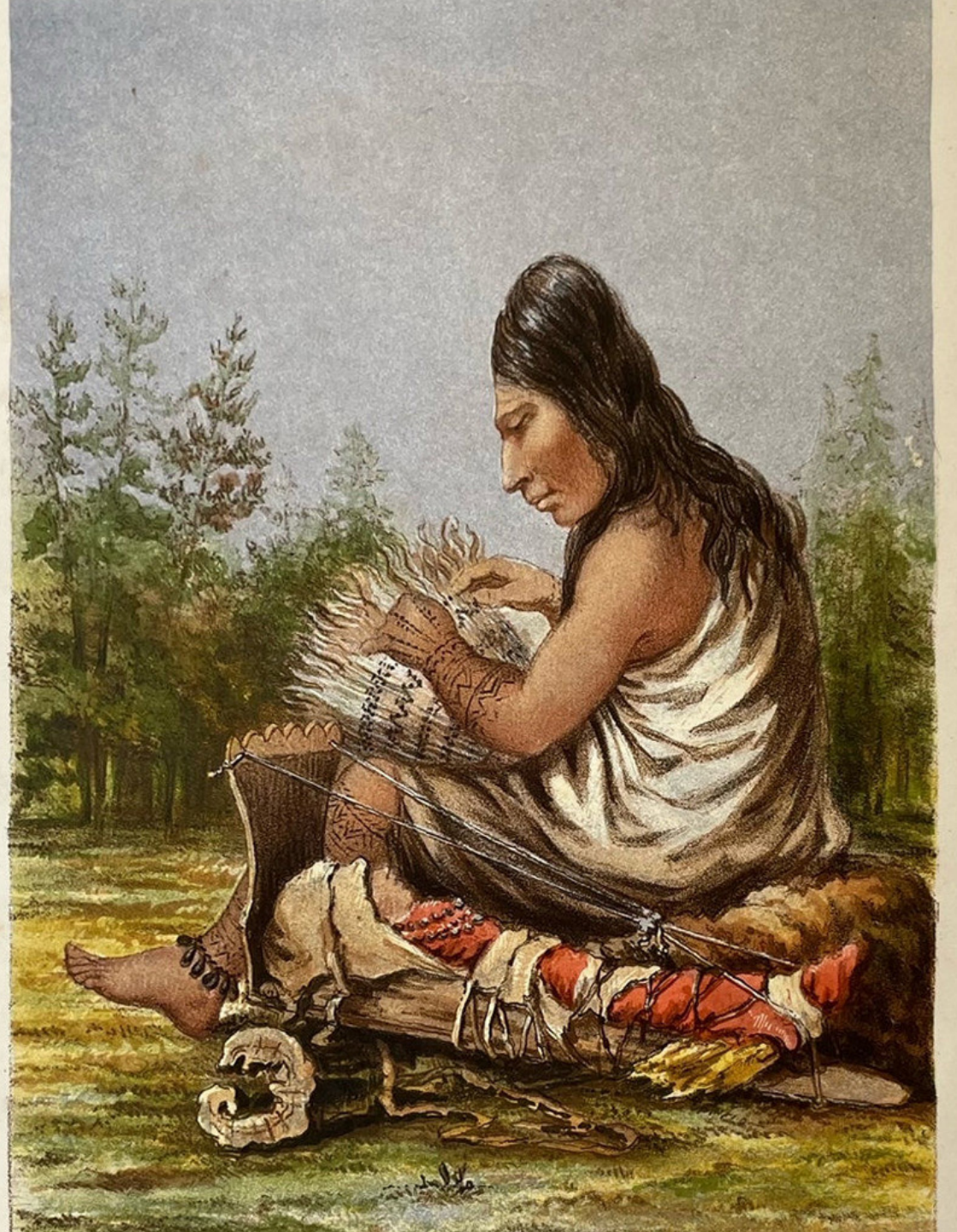


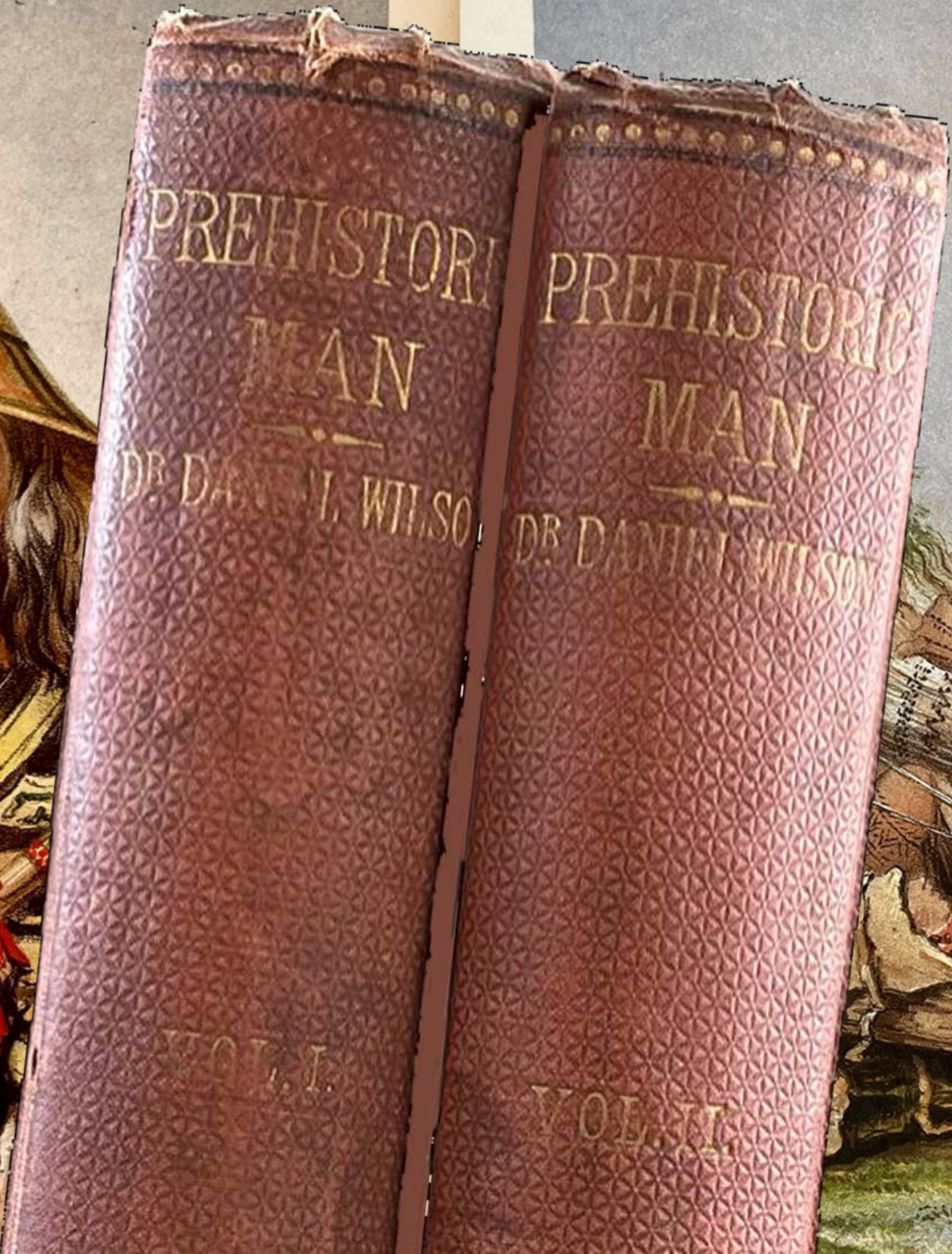




Want des Conyngh gheen erch dynkende quam ter ghestelde
plaetse te Weter by Saltsbury, Verseft hapt synde mit
omtrent **iiii. lxxxv** van syne doelen: Maer de Saxonen
hebbende hen selue voorsien med wapenen ende ghevece
zy onder hun mantelen droeghen, versloeghen alle dese
Britanen ende naemlyc des Conyngh ghevanghen Aurelius
Ambrosius die naer dotigene Conyngh werdt. Willende de
versleghe Britanische doelen een conyngh ghe dynkenisse
oprichten dede door de behendicheyt van Moelyn vromen
grooten hoop sterven rommen uit Juland ende dede die
stellen op S. Ambrosius berch, daer se noch staen In dese
voeghe: So is selue ter plaetsen uut ghetwerkent
hebbe:









EUROPEAN BISON.

*From a painting on the roof of the Cave
of Altamira, Spain.*

AFTER A DRAWING BY
M. H BREUIL

PRE-HISTORIC TIMES,

AS ILLUSTRATED BY

ANCIENT REMAINS,

AND THE

MANNERS AND CUSTOMS OF MODERN SAVAGES.

BY

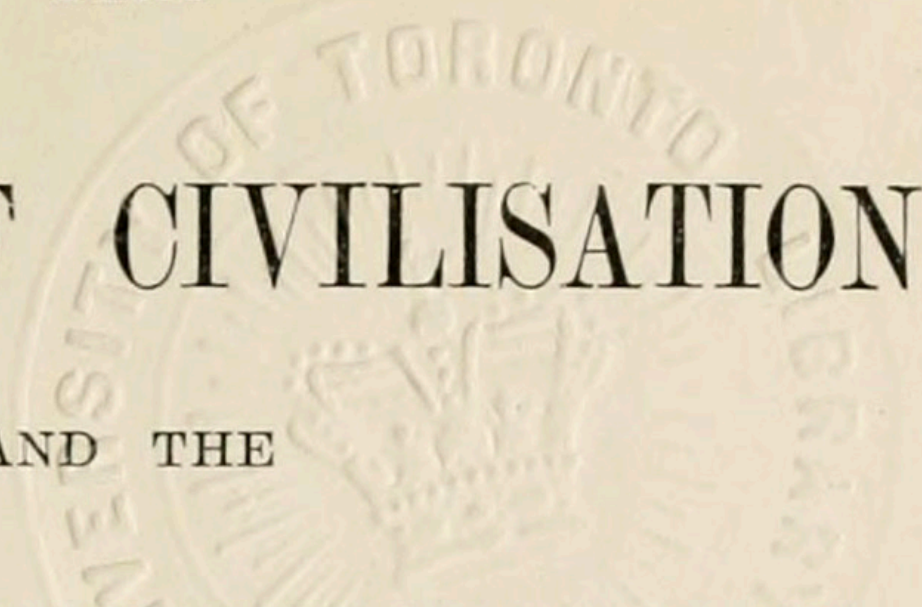
SIR JOHN LUBBOCK, BART., M. P.,

VICE-PRESIDENT OF THE ROYAL SOCIETY; VICE-PRESIDENT OF THE BRITISH ASSOCIATION;
PRESIDENT OF THE ANTHROPOLOGICAL INSTITUTE; AND FELLOW OF THE LINNEAN, GEOLOGI-
CAL, AND OTHER LEARNED SOCIETIES.



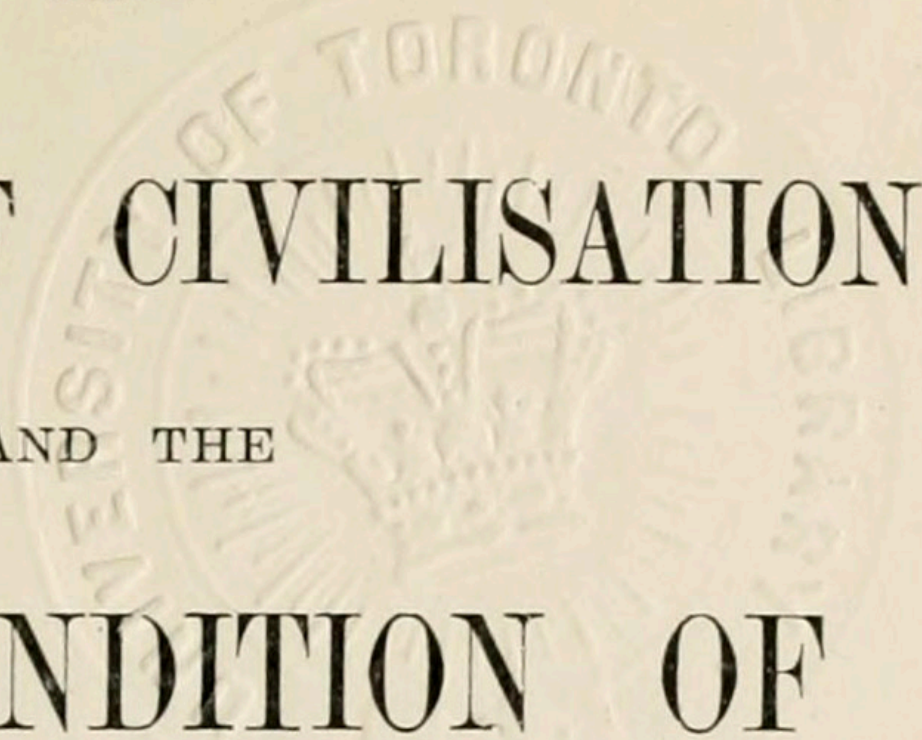
FIG. 154.—Stonehenge.

THE
ORIGIN OF CIVILISATION
AND THE
PRIMITIVE CONDITION OF MAN

A faint, circular watermark of the University of Toronto seal is visible in the background. The seal features a central crest with a book and a lamp, surrounded by the text "UNIVERSITY OF TORONTO" and "1827".

M

THE
ORIGIN OF CIVILISATION
AND THE
PRIMITIVE CONDITION OF MAN

A large, faint watermark of the University of Toronto seal is visible in the background. The seal features a central crest with a book and a lamp, surrounded by the text "UNIVERSITY OF TORONTO" and "1827".

MENTAL and SOCIAL CONDITION of SAVAGES



VIEW OF STONEHENGE





**STONEHENGE,
THE WHOLE EXTENDING TO ABOUT
6,400 ACRES.**

The Vendor is prepared to leave two-thirds of the purchase money upon mortgage at $4\frac{1}{2}$ per cent. for five years to approved purchasers of lots exceeding £300 in accordance with the conditions of sale.

**TO BE OFFERED BY AUCTION ON
21ST SEPTEMBER, AT THE NEW
THEATRE, SALISBURY, BY
Messrs.**

**KNIGHT, FRANK & RUTLEY,
IN CONJUNCTION WITH
Messrs.**

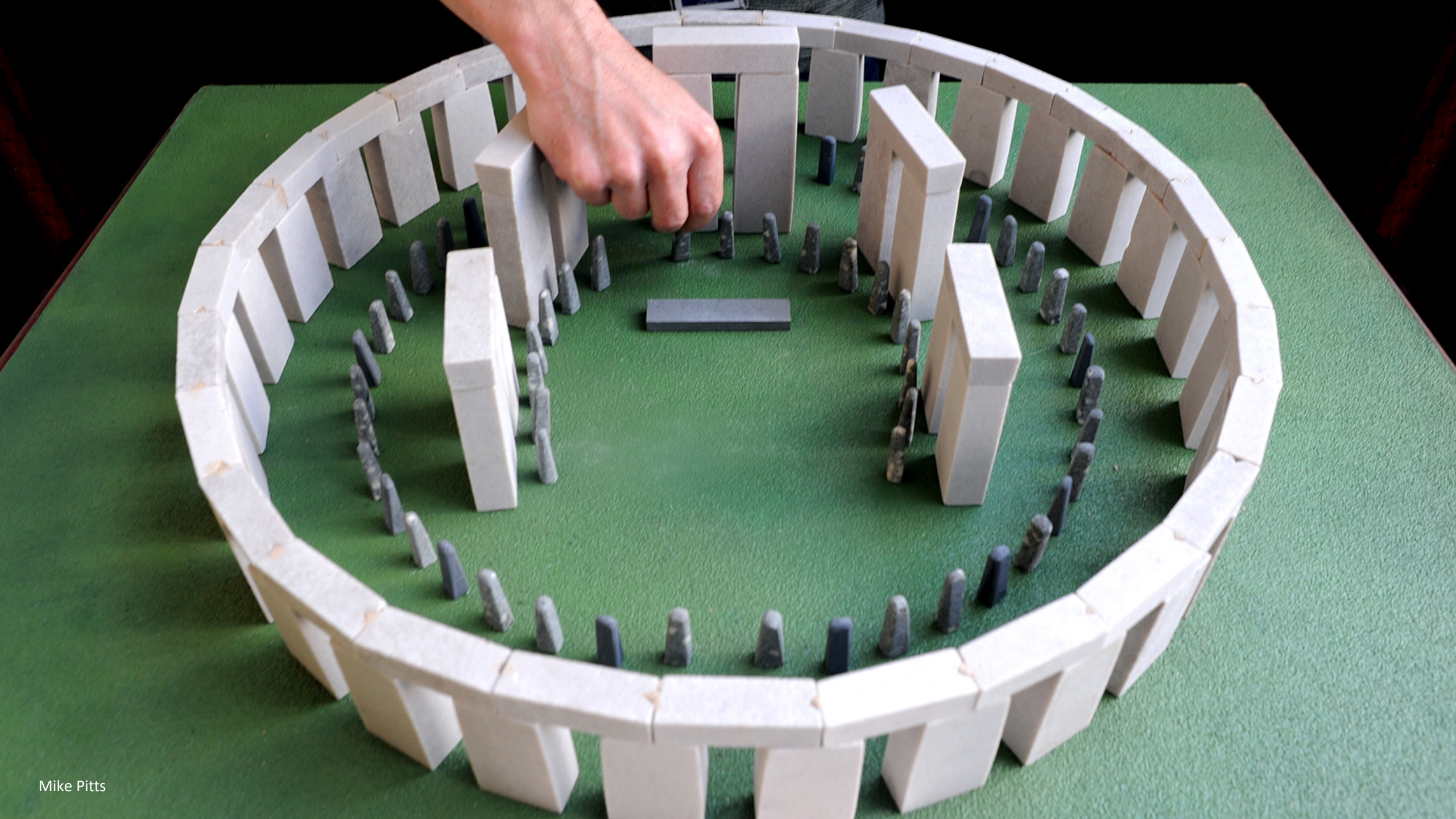
**EDEN, BAINES & KENNAWAY,
ESTATE OFFICE,
HEYTESBURY, WILTS.**

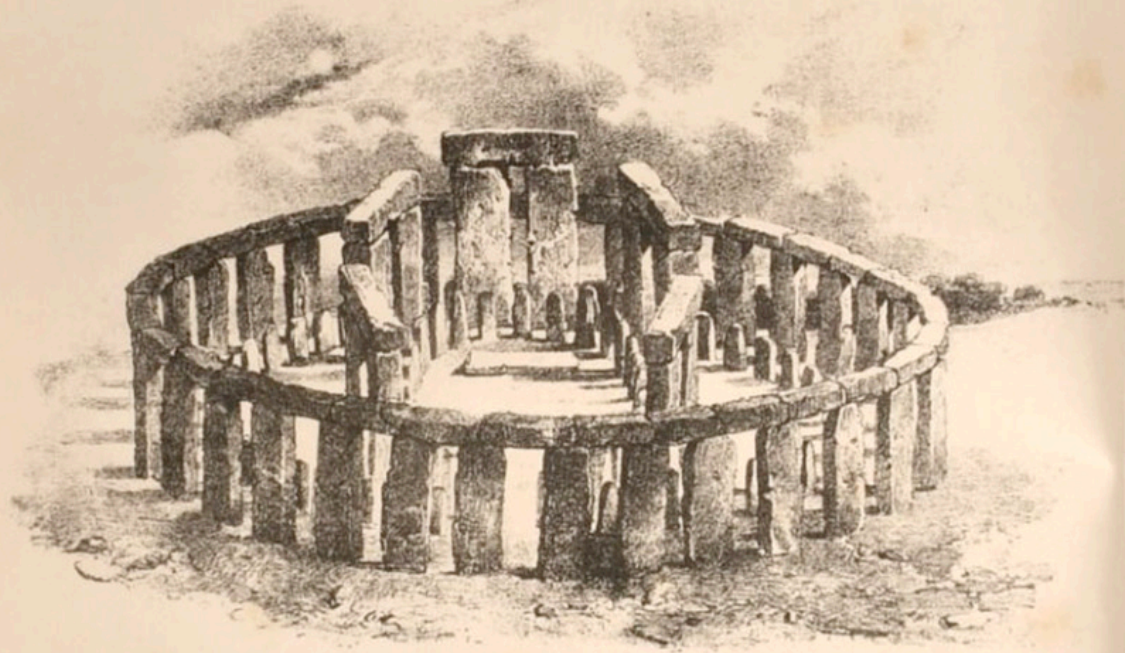
Solicitors: Messrs. FARRER & Co., 66,
Lincoln's Inn Fields, London, W.C.



STONEHENGE.







STONEHENGE RESTORED

THE STONES OF
STONEHENGE

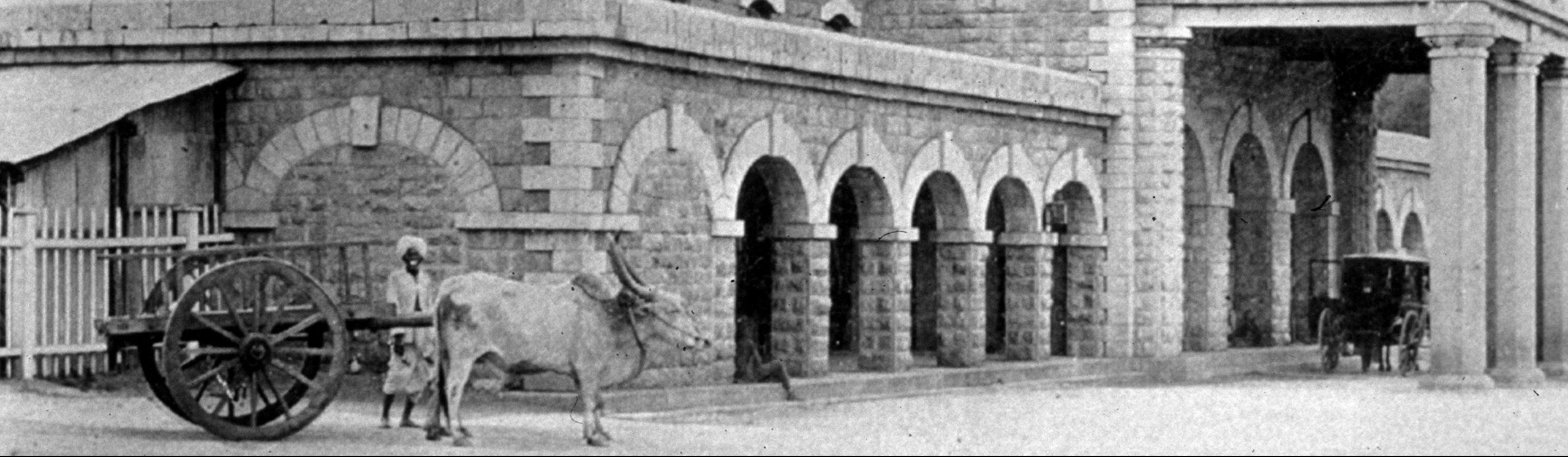
A full description of the Structure and of its Outworks.
Illustrated by numerous photographs, diagrams,
and plans drawn to scale

By **E. Herbert Stone, F.S.A.**

Fellow of King's College, London.
Sometime Member of
The Institution of Civil Engineers, and
The American Society of Civil Engineers.

LONDON: ROBERT SCOTT
ROXBURGHE HOUSE
PATERNOSTER ROW, E.C

1924

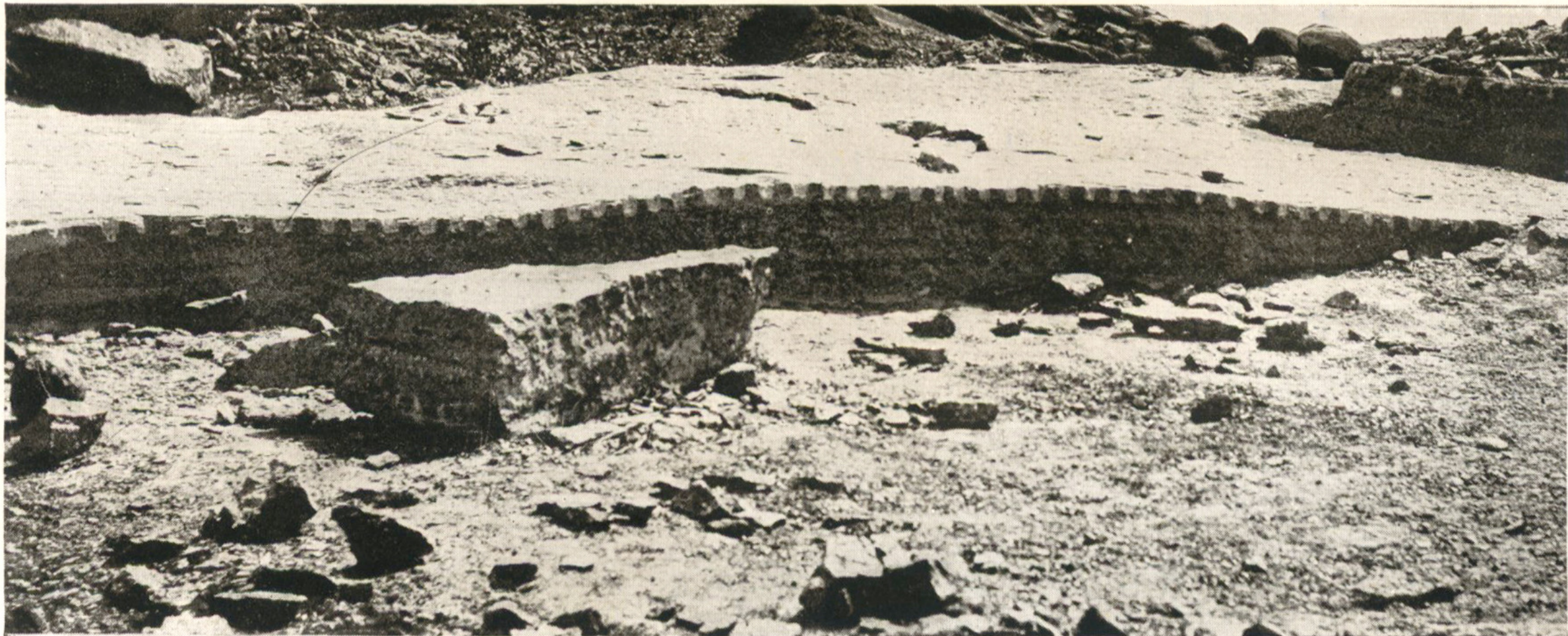


GRANITE QUARRIES AT HYDERABAD.



Worked with 'mauls'—Native system.

GRANITE QUARRIES AT HYDERABAD.



Worked with 'plug and feather'—European system.





STONE TOOLS—HEAVY MAULS.

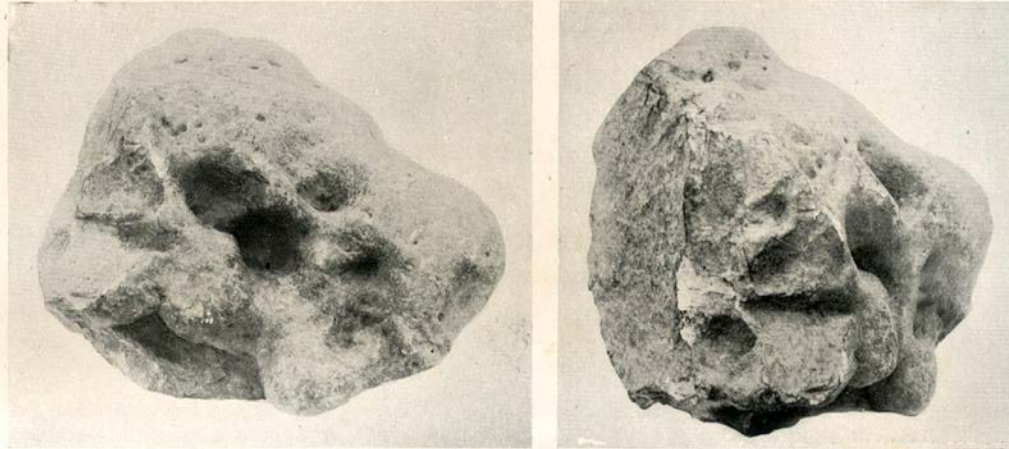


Fig. 1.—Quartzite Nodule—Quarter size.

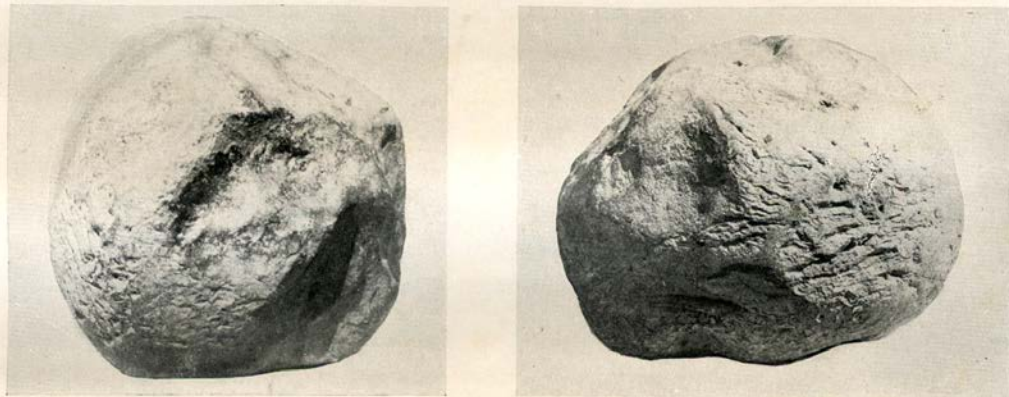
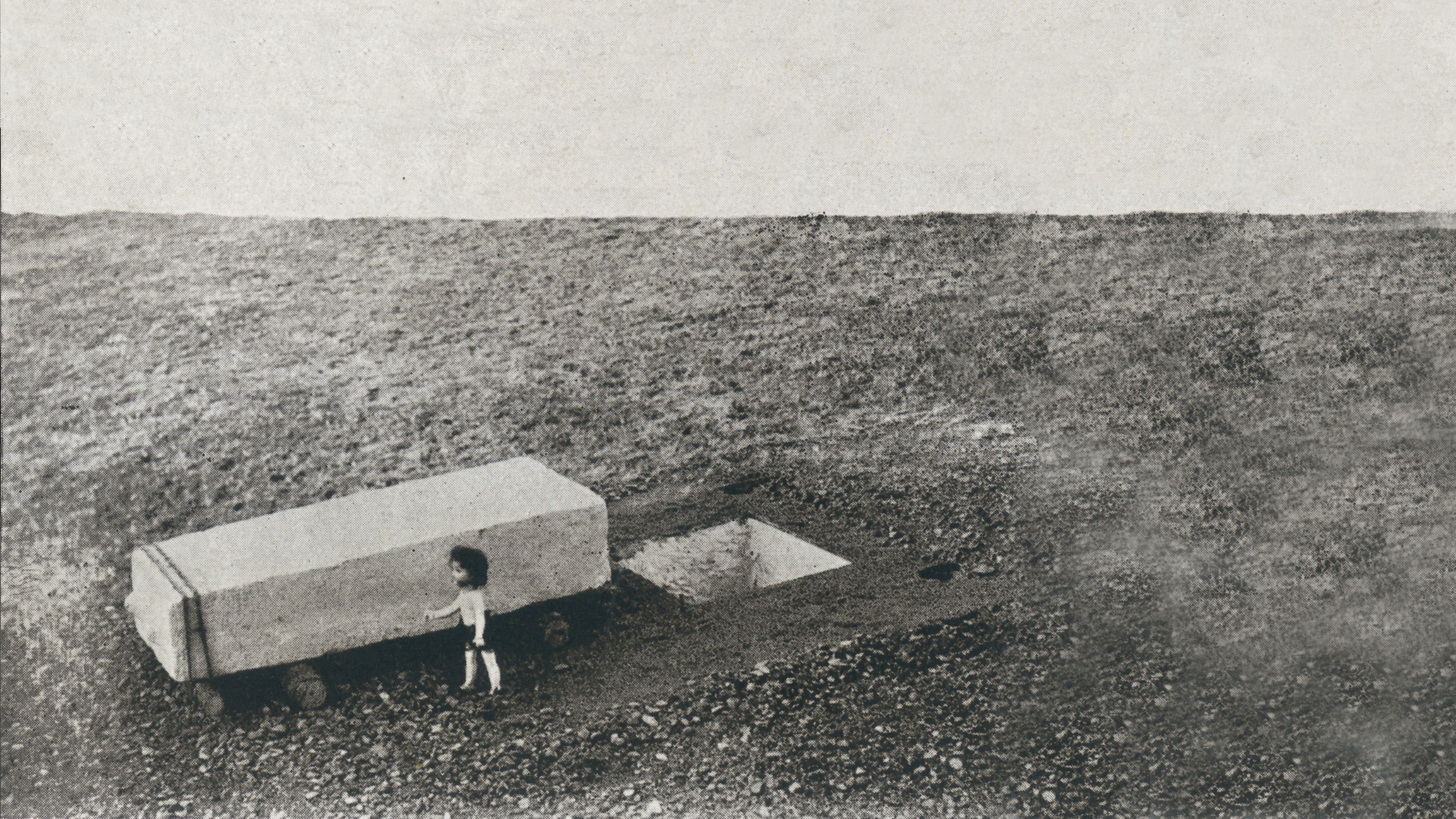


Fig. 2.—Maul after use—Quarter size.



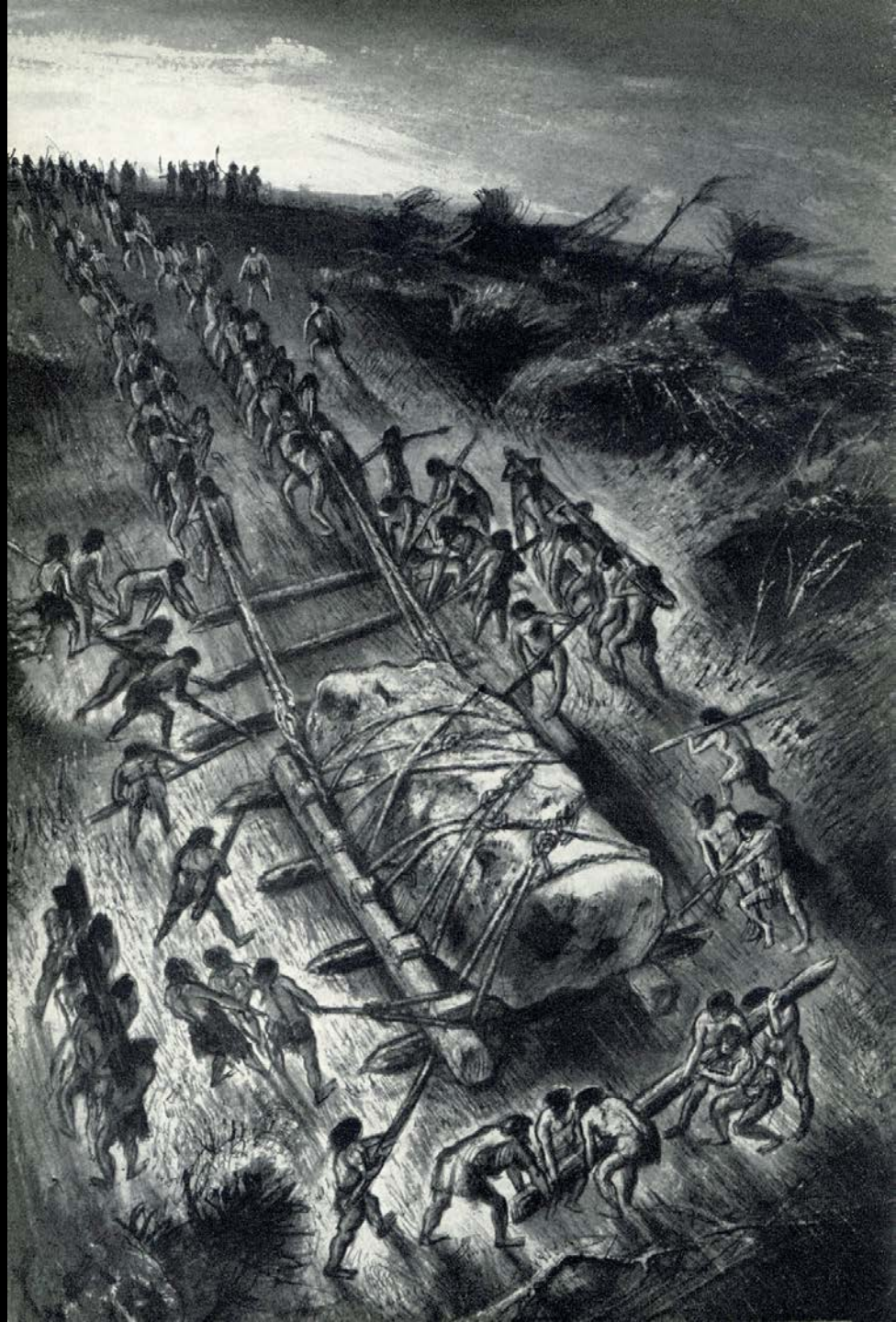




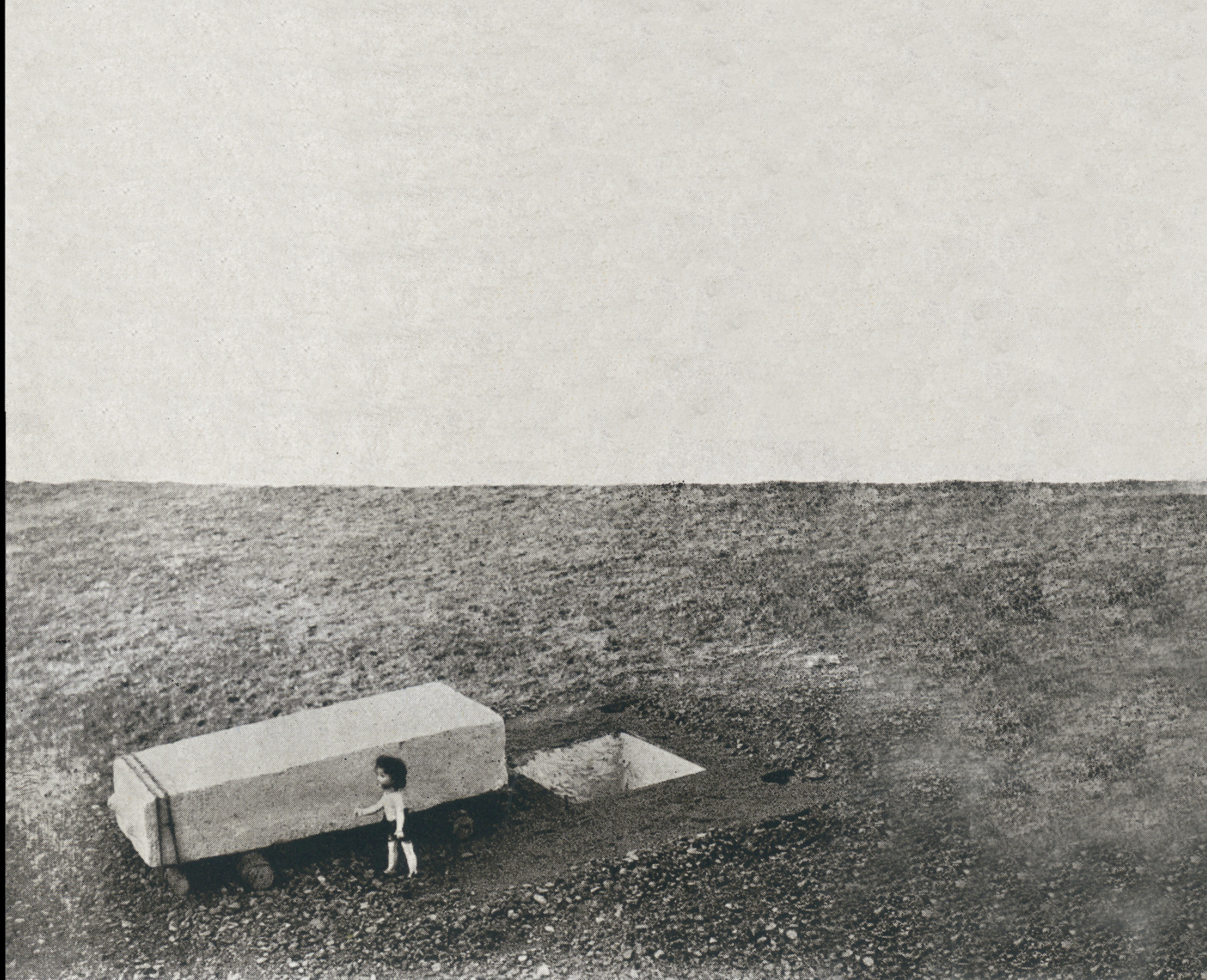




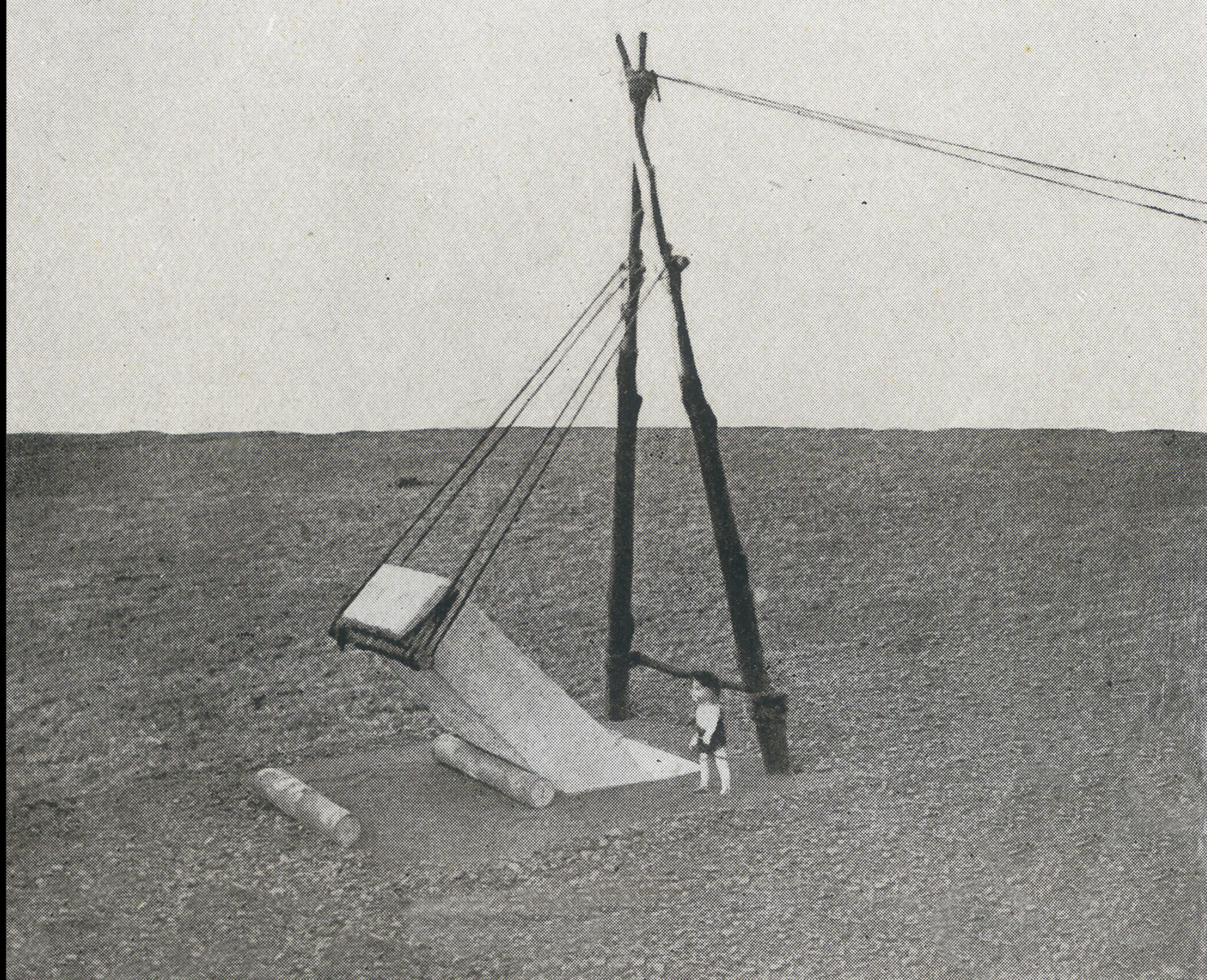
Lancelotti Speed

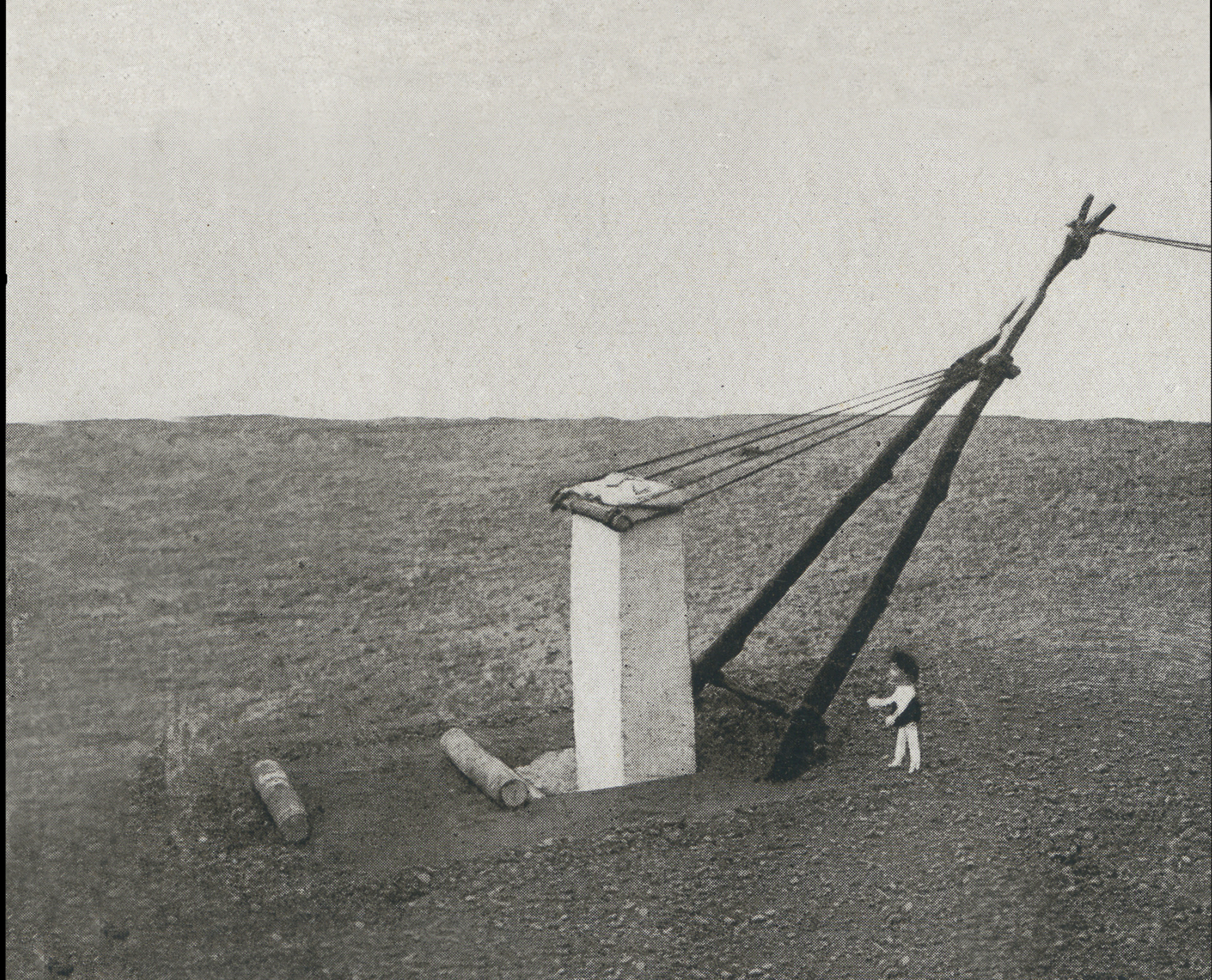
















Brian Hope-Taylor/National Geographic



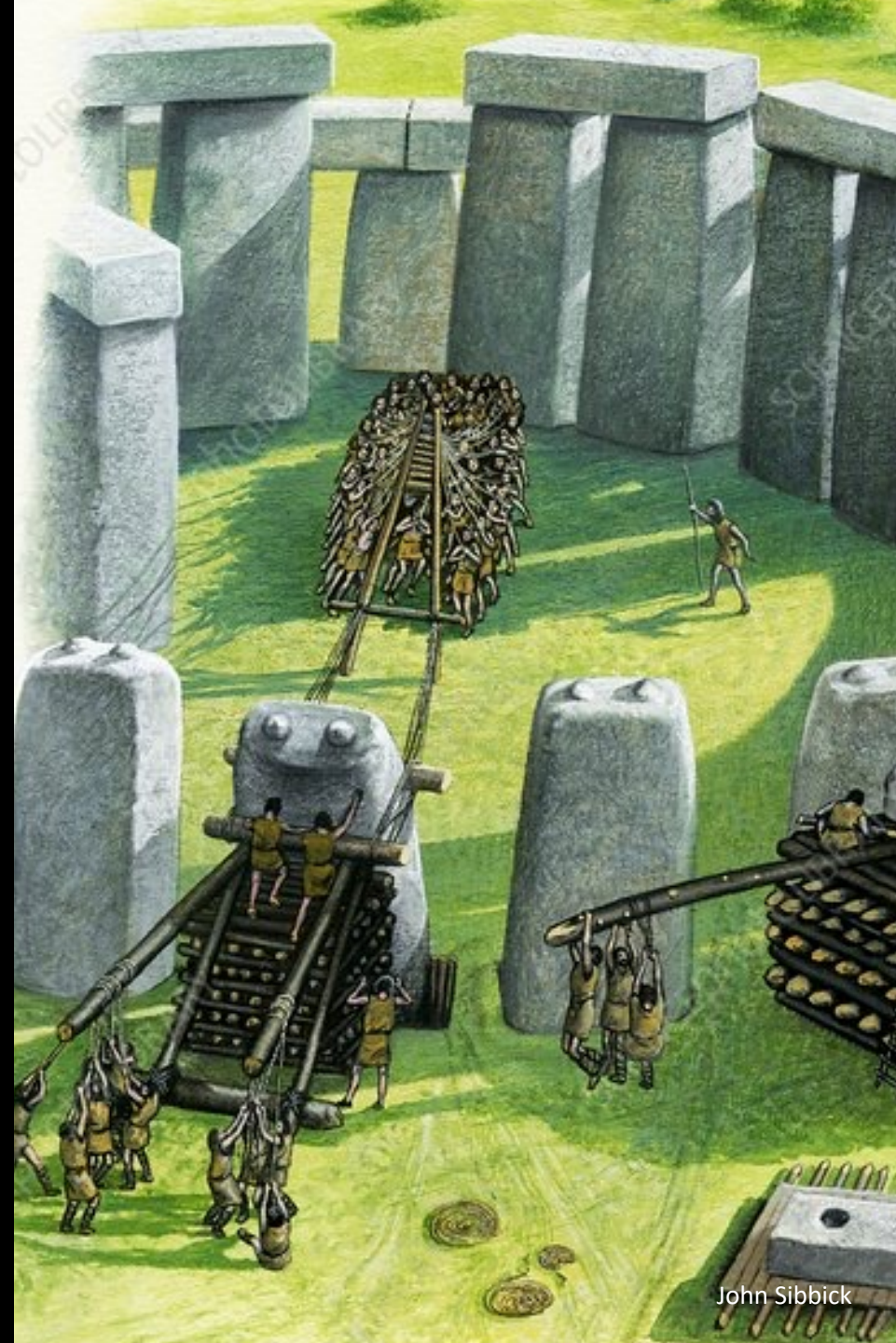
Mike Pitts



Nationaal Museum van Wereldculturen/Ludwig Borutta



Mike Pitts







Thor Heyerdahl



John Kenney







Mike Pitts

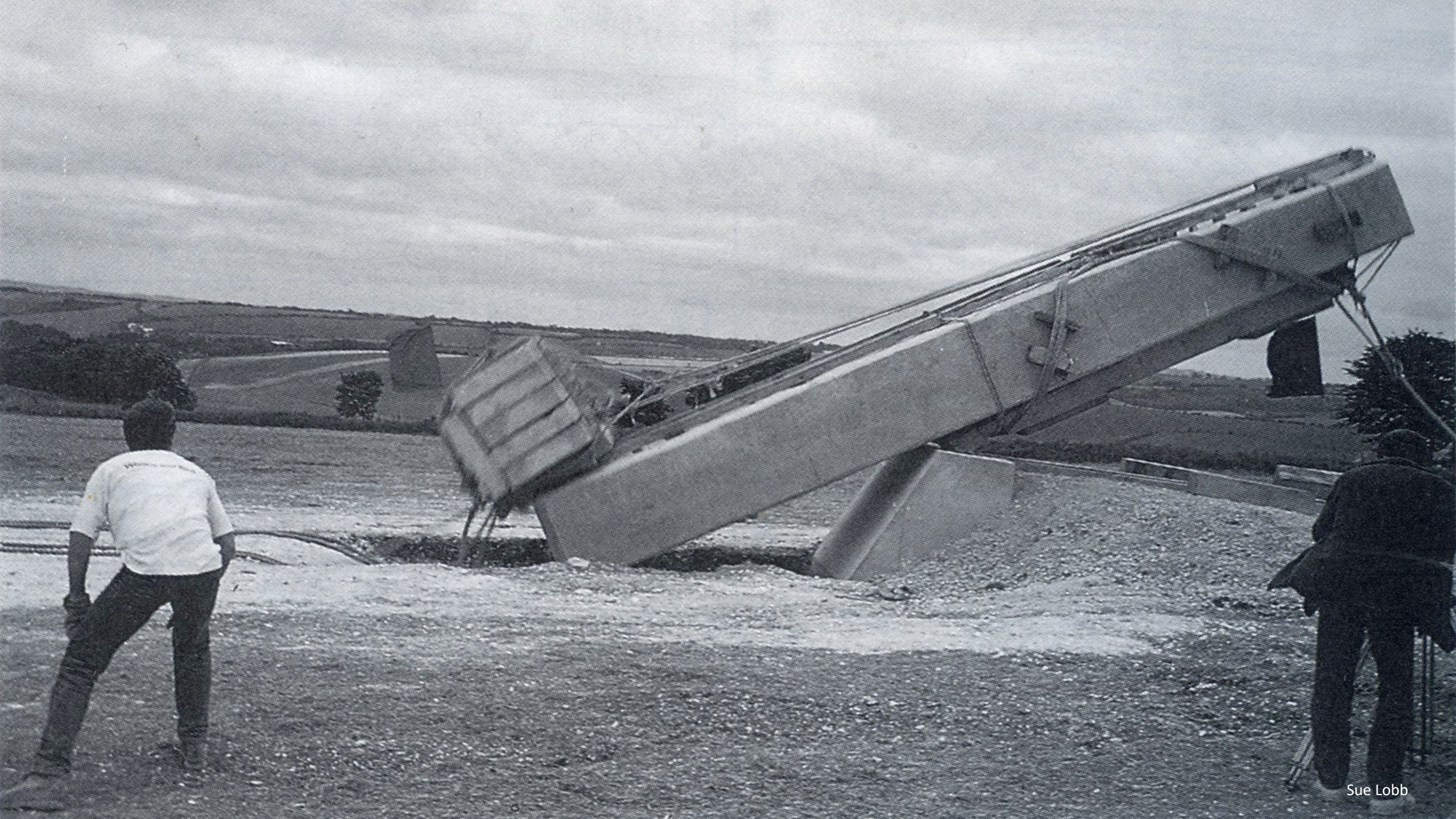


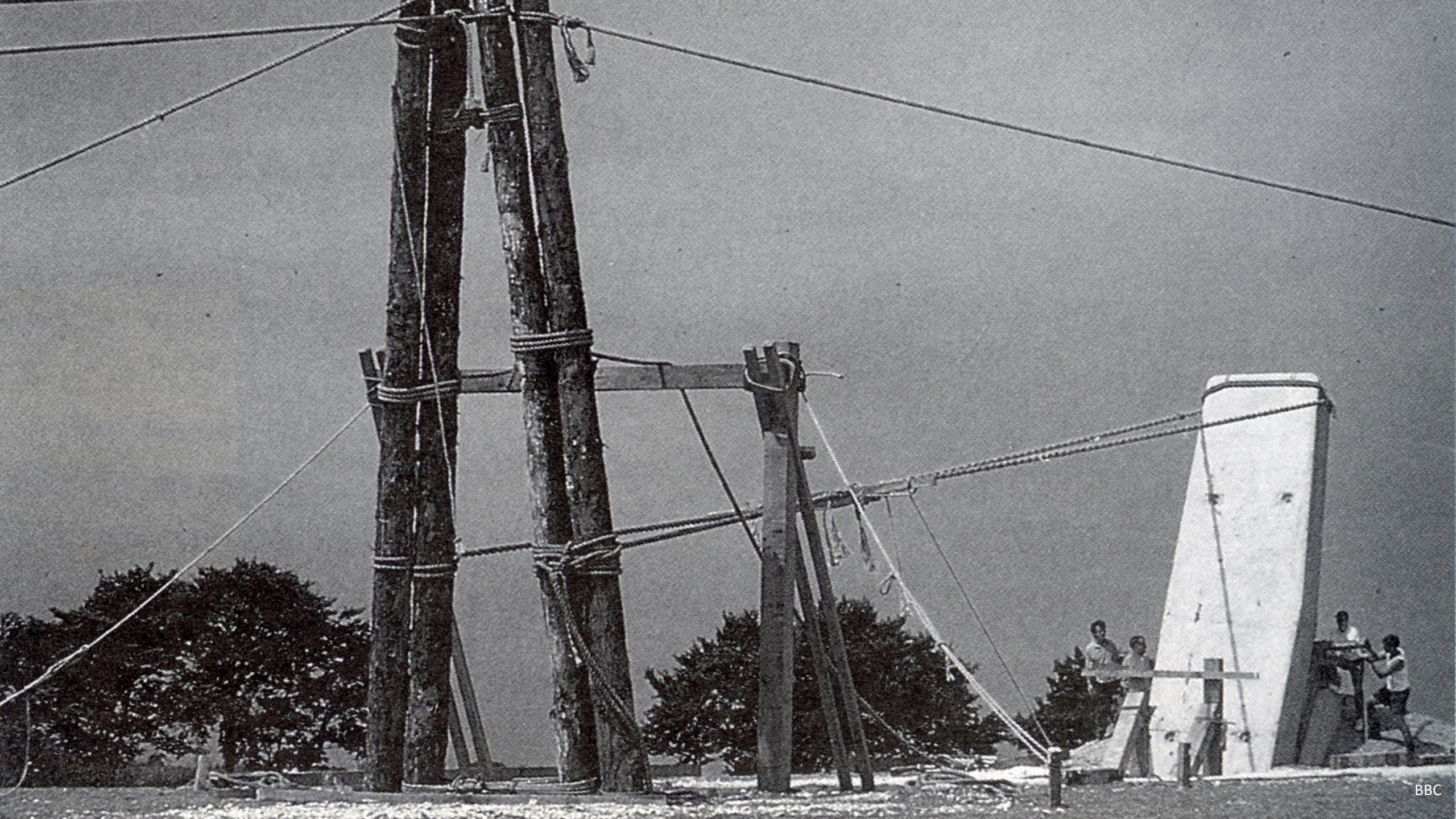


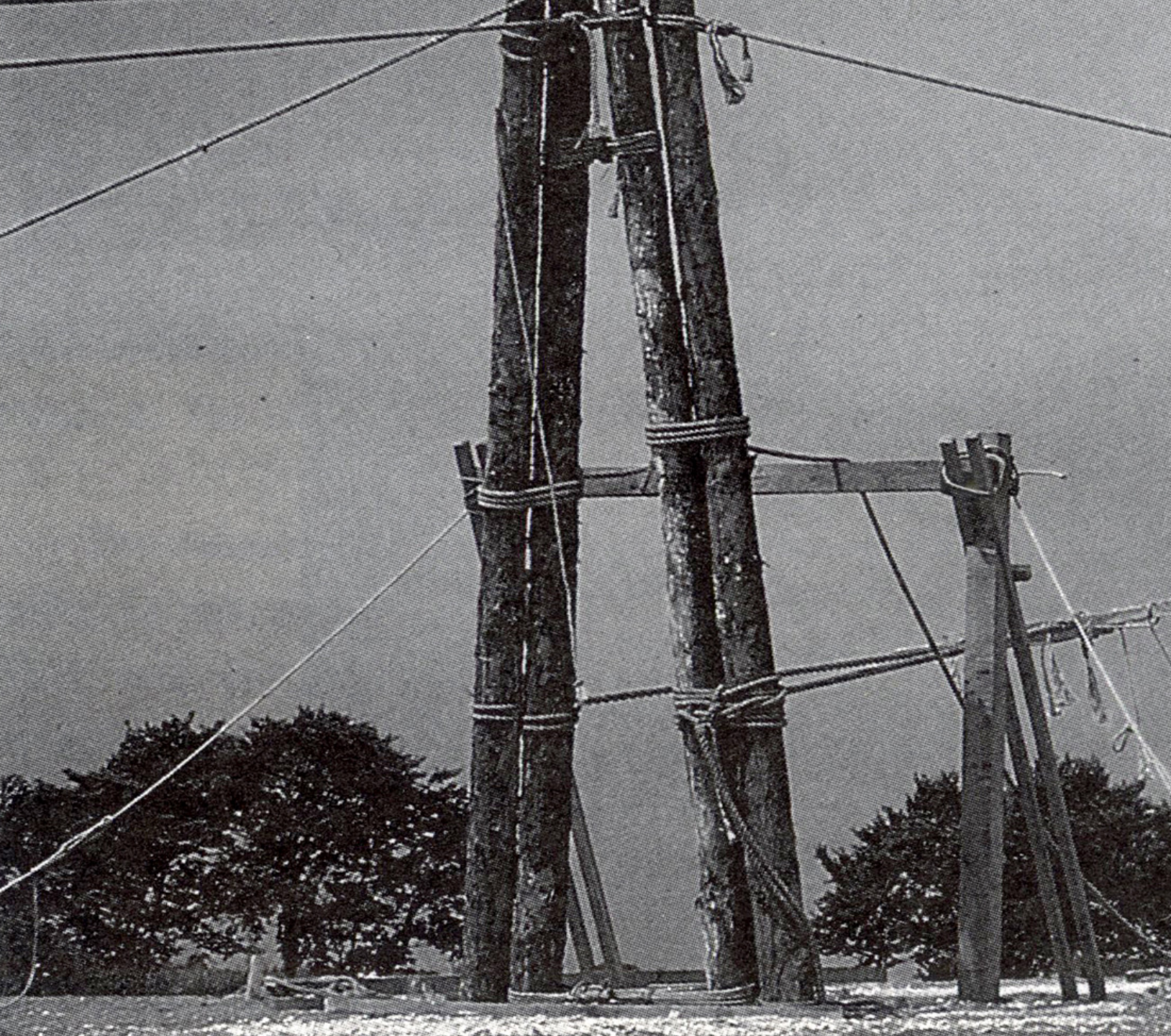
John Kenney



Ron Adams







PRIMITIVE CULTURE:

RESEARCHES INTO THE DEVELOPMENT OF MYTHOLOGY, PHILOSOPHY,
RELIGION, ART, AND CUSTOM.

BY

EDWARD B. TYLOR,

AUTHOR OF "RESEARCHES INTO THE EARLY HISTORY OF MANKIND," &c.

LONDON:

JOHN MURRAY, ALBEMARLE STREET.

1871.

ANCIENT SOCIETY

OR

RESEARCHES IN THE LINES OF HUMAN PROGRESS

FROM SAVAGERY, THROUGH BARBARISM

TO CIVILIZATION

BY

LEWIS H. MORGAN, LL.D

*Member of the National Academy of Sciences. Author of "The League of the Iroquois,"
"The American Beaver and his Works," "Systems of Consanguinity and
Affinity of the Human Family," Etc.*

THE
INTERESTING NARRATIVE
OF
THE LIFE
OF
OLAUDAH EQUIANO,
OR,
GUSTAVUS VASSA,
THE AFRICAN.
WRITTEN BY HIMSELF.

VOL. I.

*Behold, God is my salvation; I will trust and not be
afraid, for the Lord Jehovah is my strength and my
song; he also is become my salvation.
And in that day shall ye say, Praise the Lord, call upon
his name, declare his doings among the people,
Isaiah xii. 2, 4.*

SECOND EDITION.

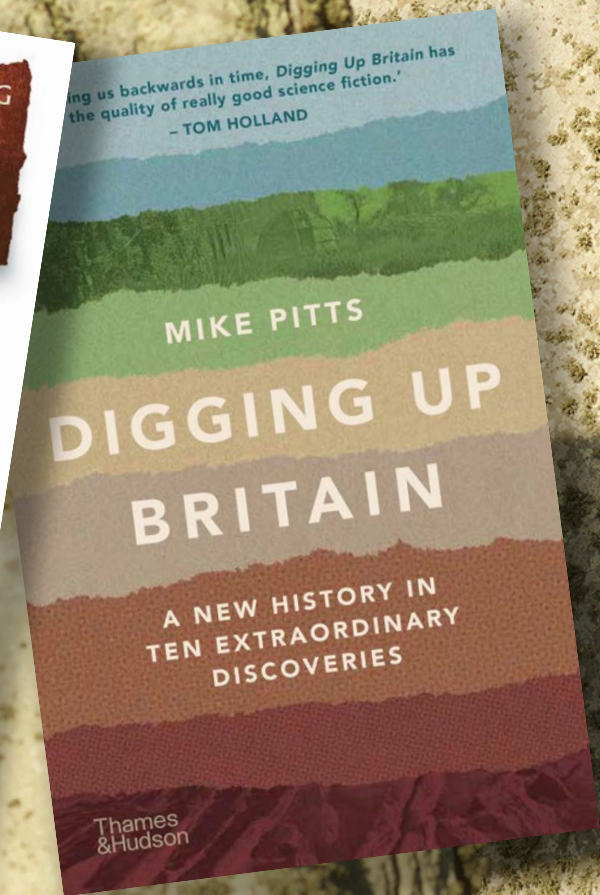
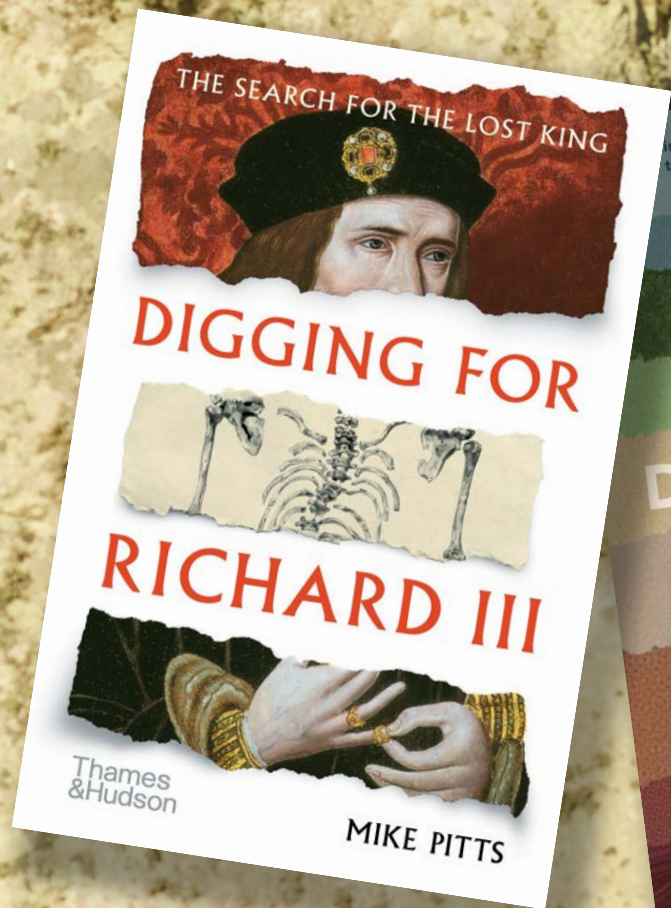
LONDON:
Printed and sold for the AUTHOR, by T. WILKINS,
No. 23, Aldermanbury;





Queen Elizabeth is welcomed to Malawi by President Hastings Banda in 1979. PICTURE:JIMMCLAGAN



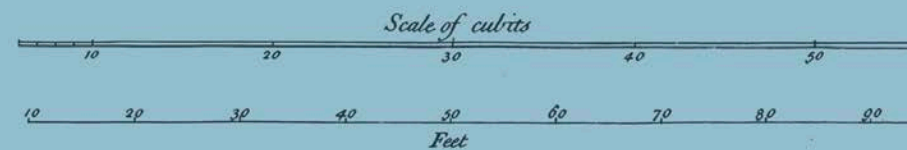
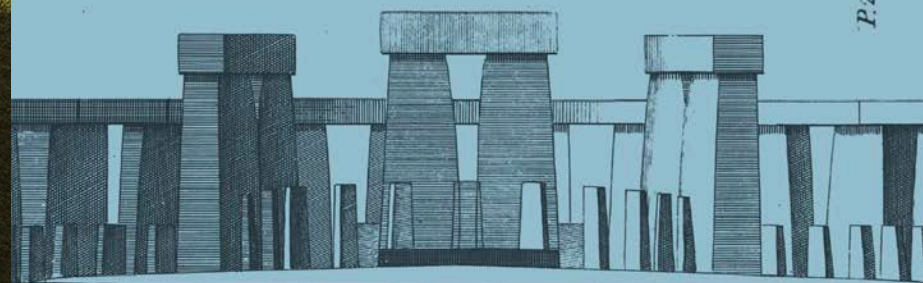


'A gripping archaeological detective story', Dan Jones *Sunday Times*

HOW TO BUILD STONEHENGE

MIKE PITTS

P. 26. TAB XIII.



Thames & Hudson

www.Gresham.ac.uk
@GreshamCollege



EST. 1597

GRESHAM
COLLEGE

**FOR THE LOVE OF LEARNING
SINCE 1597**



GRESHAM

COLLEGE