

Gresham College Lecture 22nd
October, 2010

"Youth transitions: from predictable
to precarious pathways"

John Bynner

Institute of Education, London

Figure 1

Previous recessions have resulted in significant long-term impacts on unemployment

- % working age people unemployed, - % real GDP growth, constant 2003 price

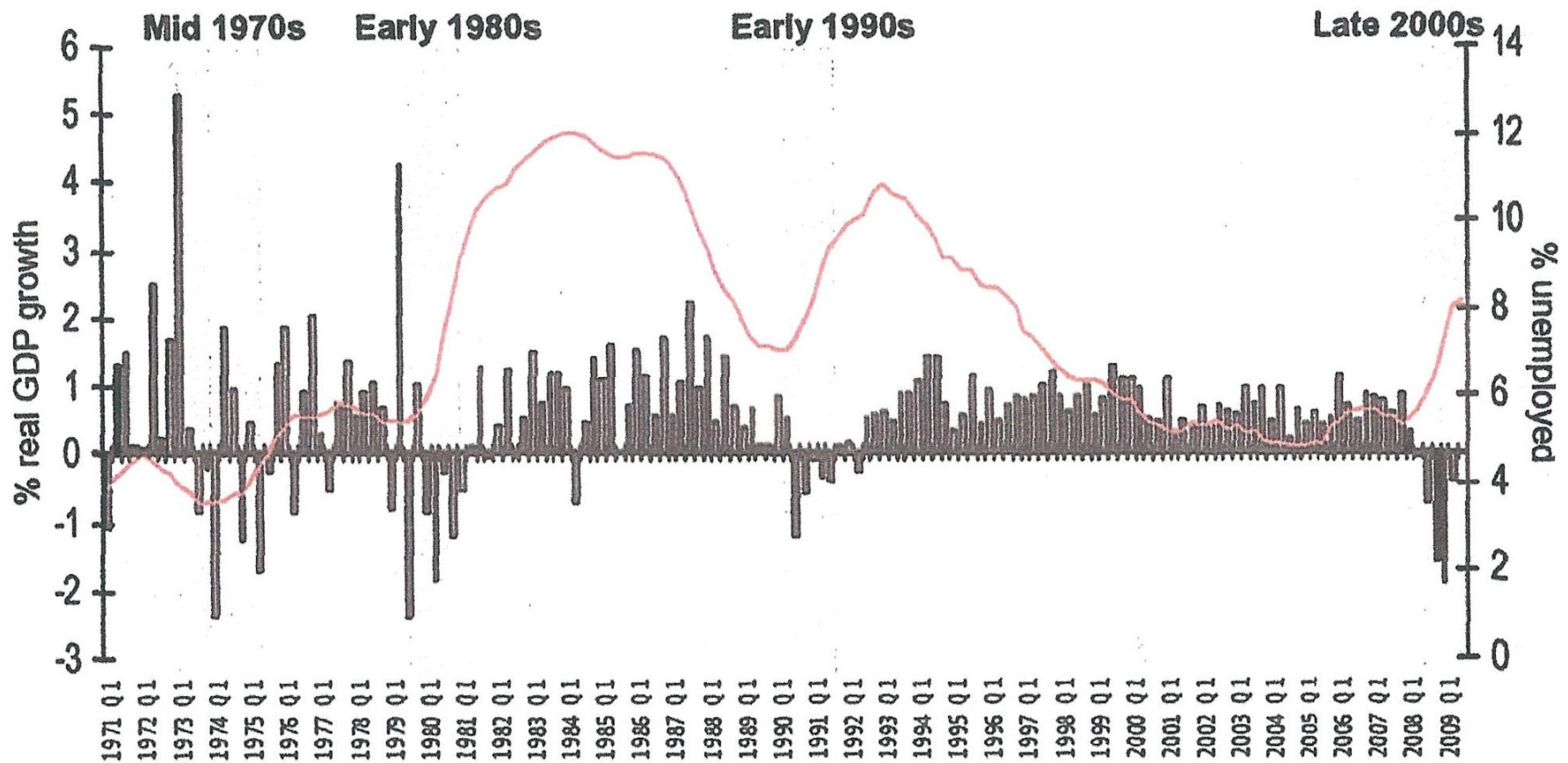


Figure 2 Unemployed young people as percentage of the age group, 16-19 year olds and 20-24 year olds, 1977 to 2000

Young Men



1997

1999

Figure 3 Unemployed young people as percentage of the age group, 16-19 year olds and 20-24 year olds, 1977 to 2000

Young women

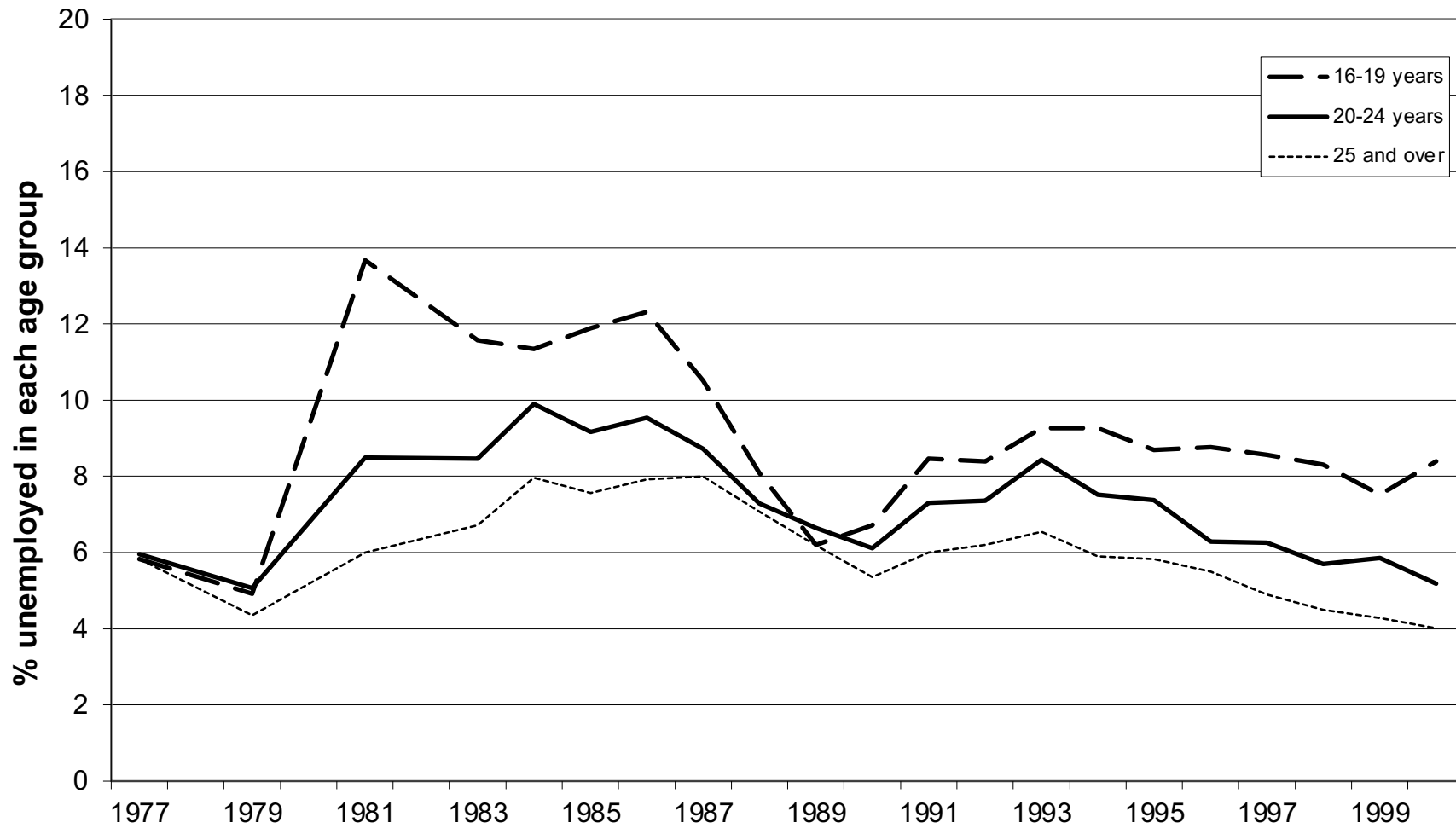


Figure 4 Unemployment rates by age

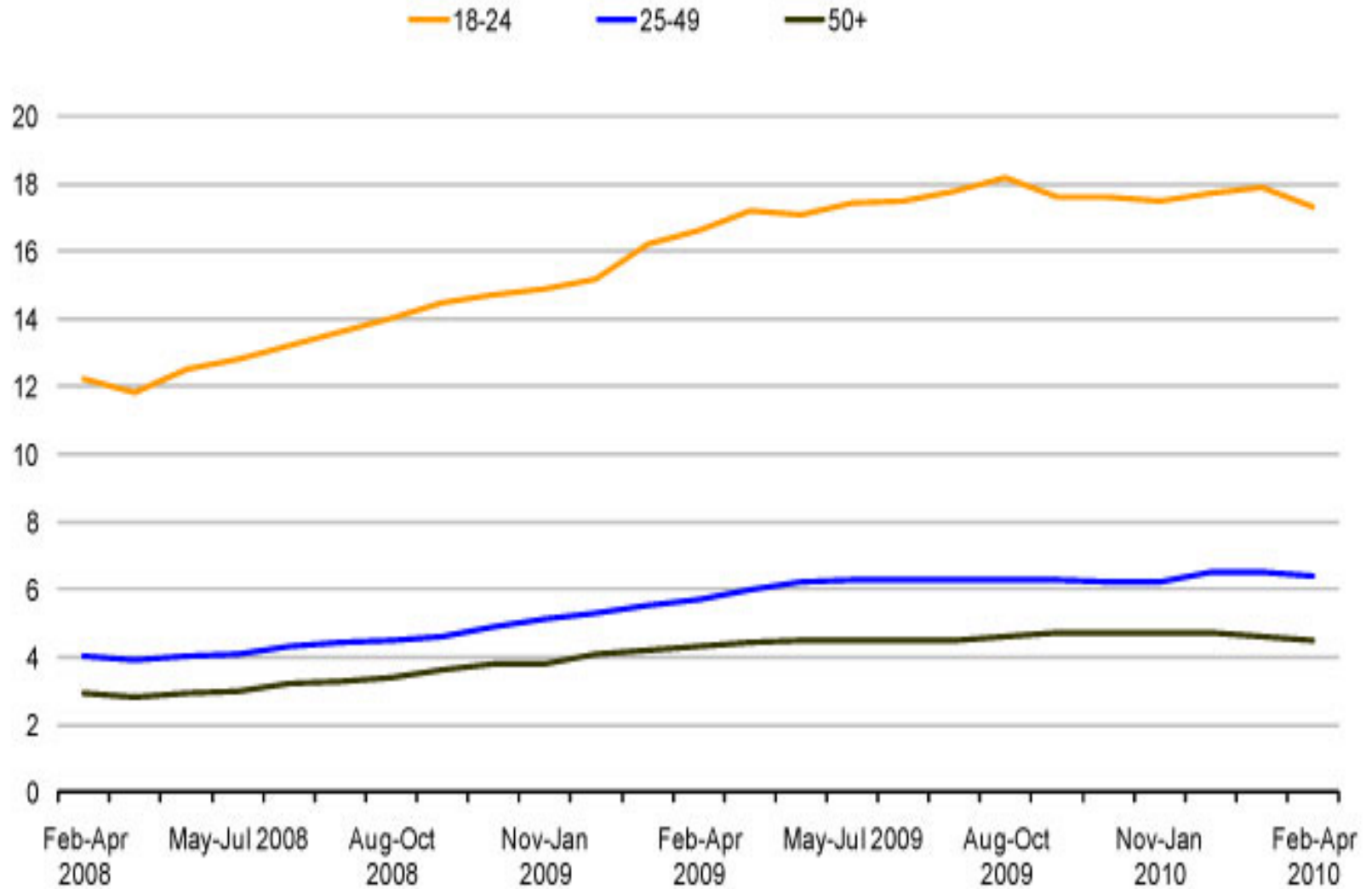
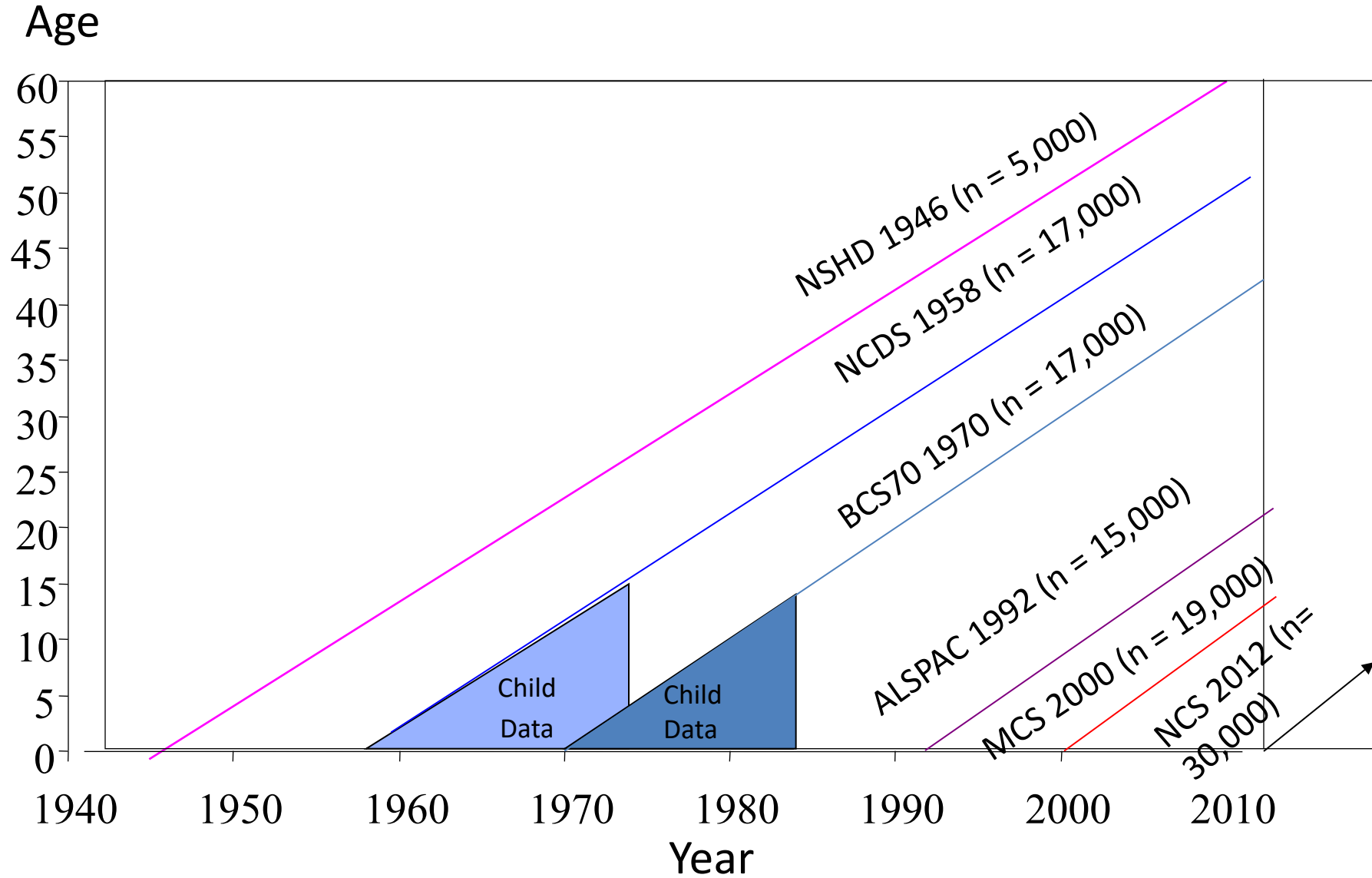


Figure 5 The British Birth Cohort studies



NCS= New cohort study

Figure 6 Percent with university or college degree (by family social class)

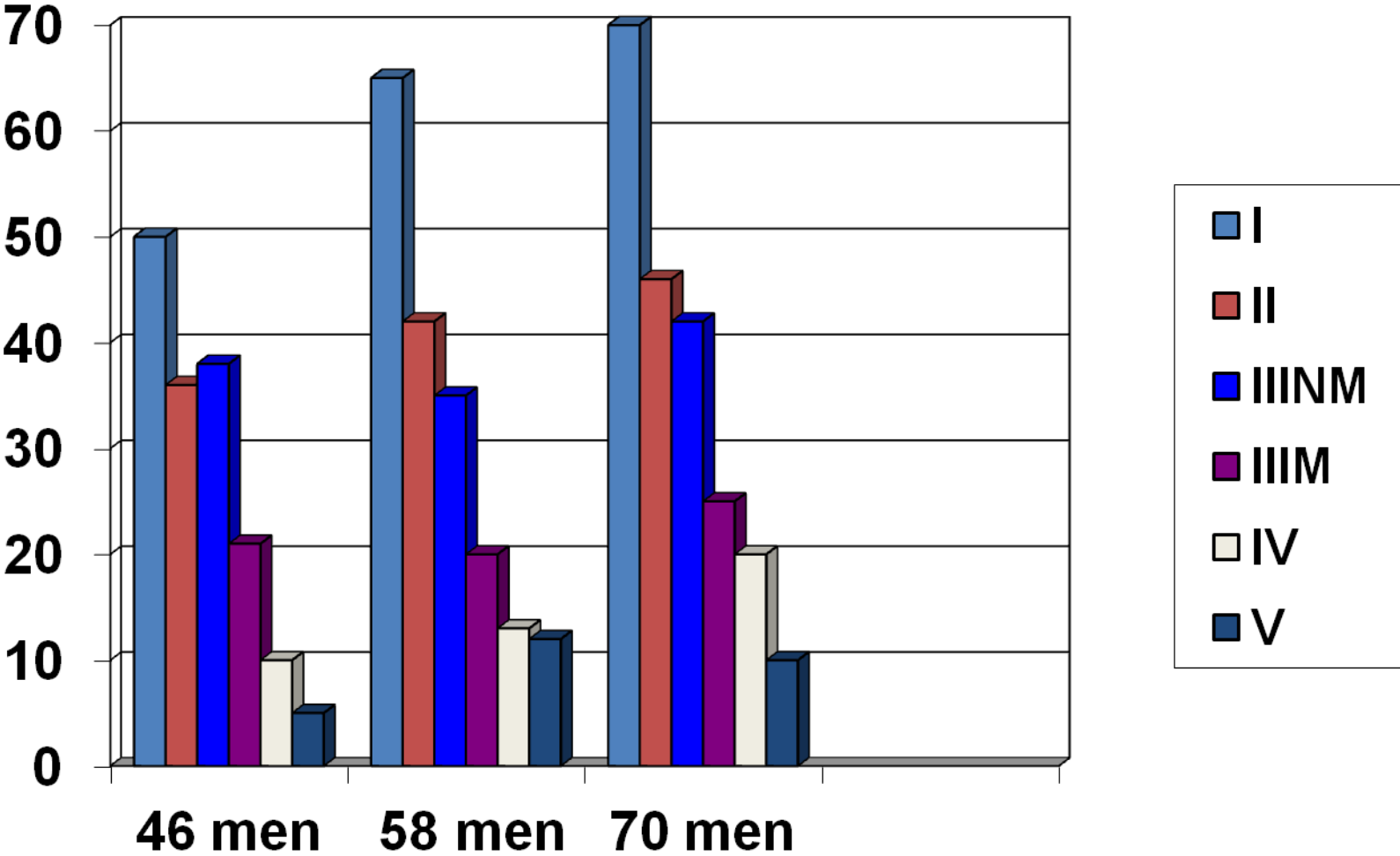


Figure 7 Predicting NEET – odds ratios
Not including highest qualification obtained by 16

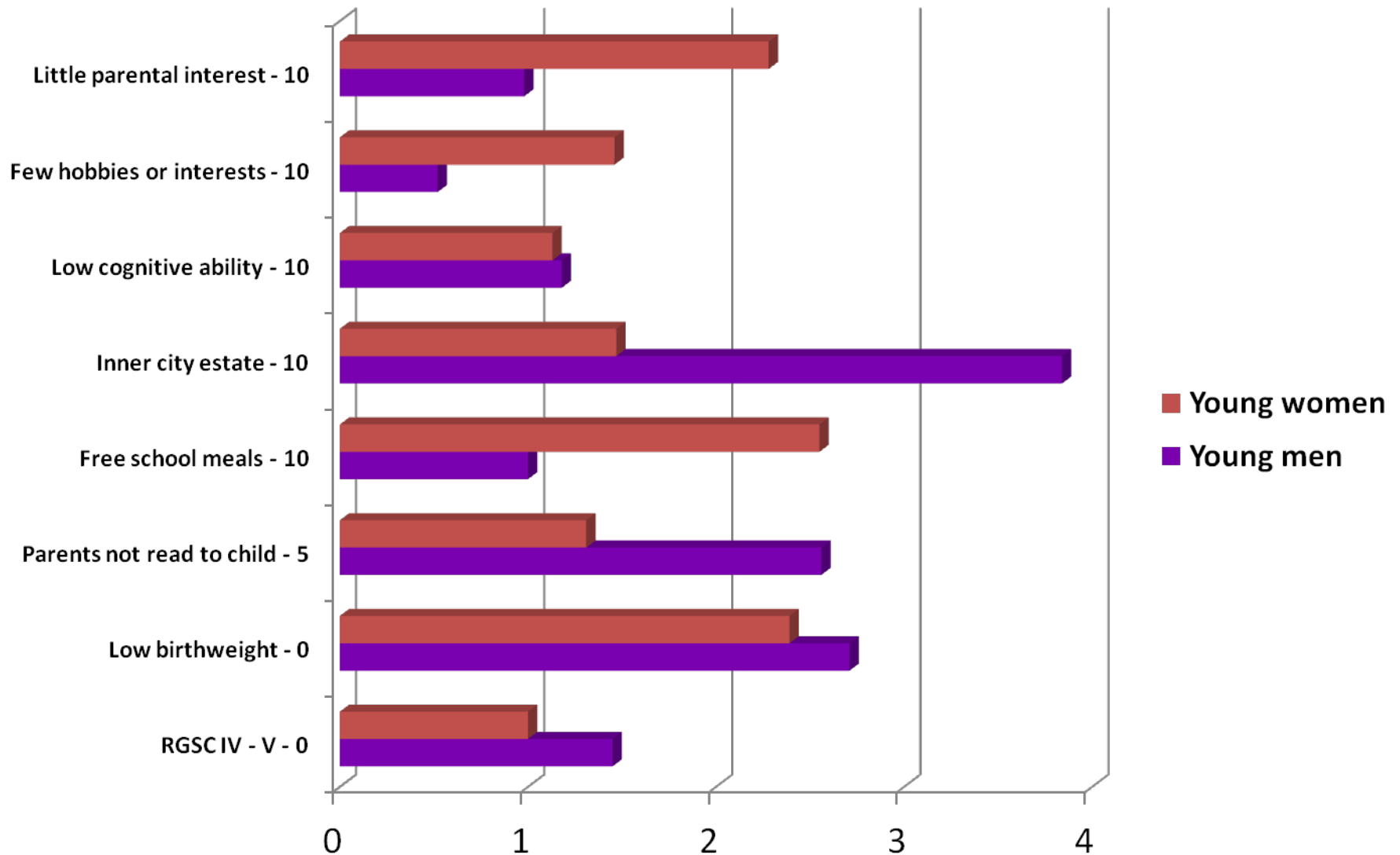


Figure 8 Predicting NEET – odds ratios
Including highest qualification achieved by 16

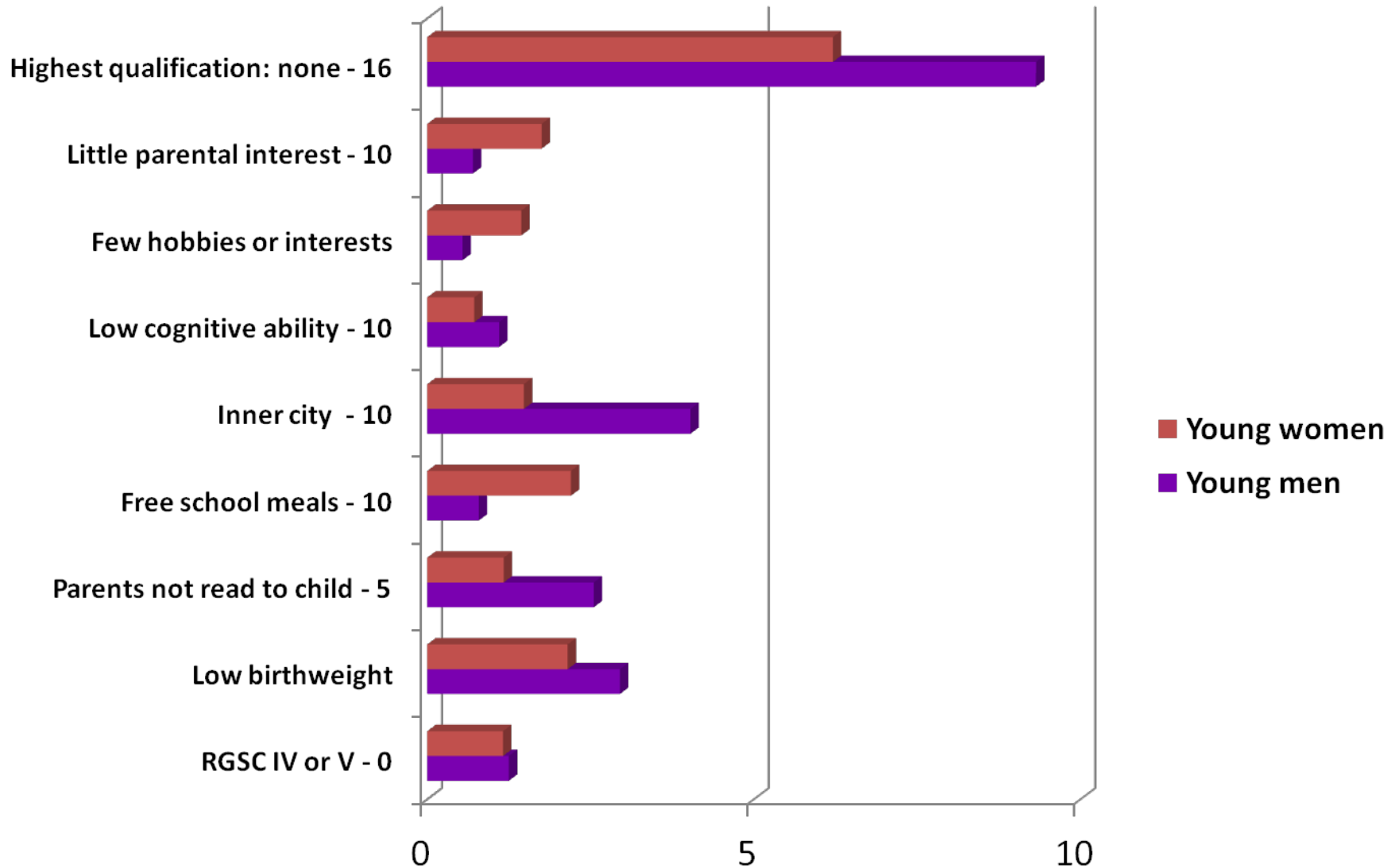


Figure 9 Predicting the outcomes of NEET at age 21 – odds ratios

